

Yellow Team Science

#'s 27 – 31

You can send your responses to kimberly.ballance@k12.wv.us, on live grades or turn them in on packet turn in dates.

May 4: The telephone has become a very important part of everyday life. Write an essay explaining how the phone has changed American life and the different ways the family uses it.

May 5: What do you think is the most significant invention ever made and why do you think so.

May 6: A pill has just be invented that would allow a person to live forever. Would you take it?

May 7: The snowblower has allowed many people to put down their shovels for good. Think about another invention that has had an impact on the way people work. Explain how the work was done and how the invention changed it

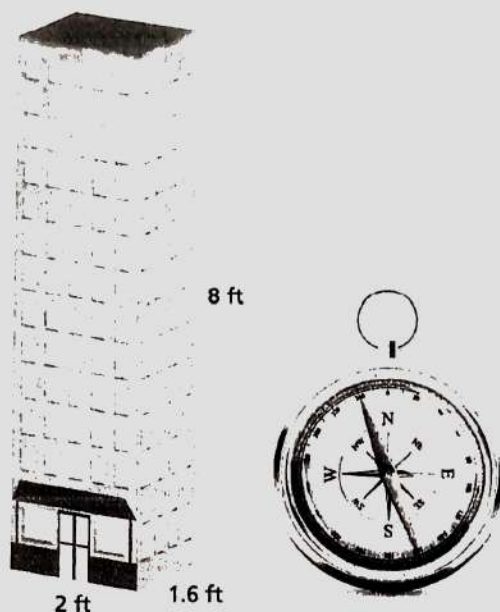
May 8: Write about an invention that you think the world would be better off without. Why do you believe it is such a terrible invention? What harm has it caused mankind?

Performance Task: Geometry

Objective: Solve problems involving scale drawings of geometric figures, including computing actual lengths and areas from a scale drawing and reproducing a scale drawing at a different scale.

Architecture

An architect builds the following scale model of a 480-foot tall building.



1. What is the scale factor of the model?
2. Find the actual length of the east side of the building.
3. Find the actual length of the south side of the building.
4. What is the actual perimeter of the base of the building? How does this relate to the perimeter of the base of the model?
5. How much floor space is there on one floor of the actual building? How does this relate to the amount of floor space on one floor of the model?

Solomin Andrey/Shutterstock.com

Copyright © Big Ideas Learning, LLC
All rights reserved.

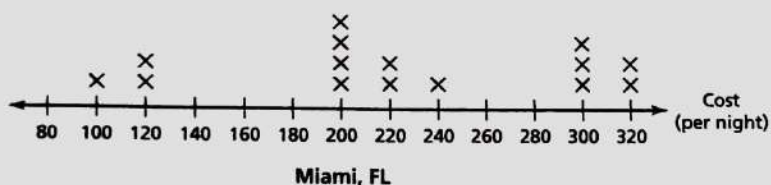
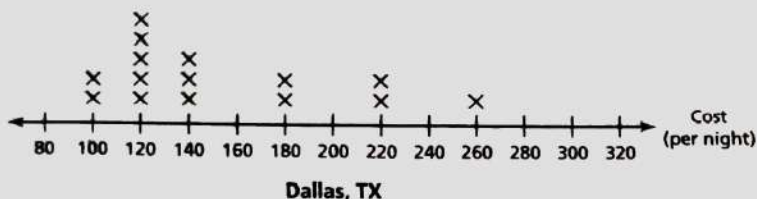
Big Ideas Math
Performance Tasks

Performance Task: Statistics and Probability

Objective: Use measures of center and measures of variability for numerical data from random samples to draw informal comparative inferences about two populations.

Hotel Room Prices

The line plots show the costs for a random sample of hotel rooms in two different cities.



1. A businessman has to make trips to Dallas and Miami. Where do you think he will pay more for a hotel room? Justify your answer.
2. Describe the distribution of the sample of hotel rooms for each city.
3. Which data set is more spread out? Explain your reasoning.

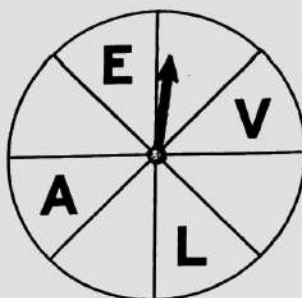
Performance Task: Statistics and Probability

Objective: Understand that the probability of a chance event is a number between 0 and 1 that expresses the likelihood of the event occurring. Larger numbers indicate greater likelihood. A probability near 0 indicates an unlikely event, a probability around $\frac{1}{2}$ indicates an event that is neither unlikely nor likely, and a probability near 1 indicates a likely event.

Using Spinners

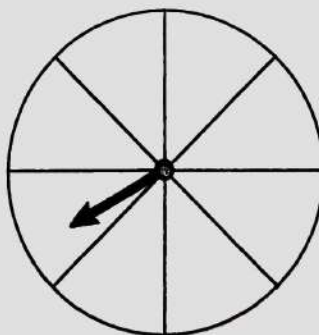
You spin the spinner shown.

1. Is spinning a vowel equally likely to happen or not happen? Explain your reasoning.
2. Give an example of an event that is equally likely to happen or not happen.
3. Give an example of an event that has a probability of 100%.
4. Give an example of an impossible event.



Use numbers to complete the spinner so that it corresponds to each described event.

5. The probability of spinning an even number is 1.
6. The probability of spinning a multiple of 3 is 0.5.
7. Spinning a 4 is unlikely.
8. Spinning a number divisible by 5 is likely.



Name _____

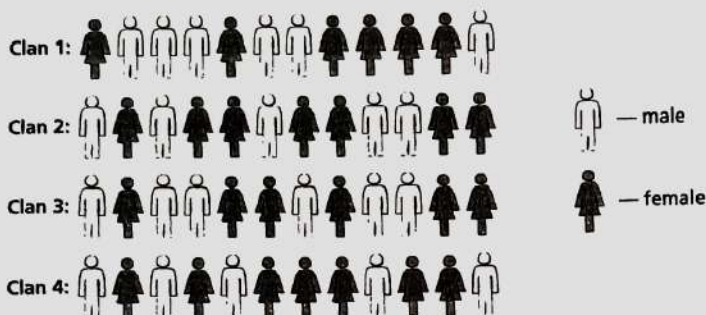
Date _____

Performance Task: Statistics and Probability

Objective: Develop a probability model and use it to find probabilities of events. Compare probabilities from a model to observed frequencies; if the agreement is not good, explain possible sources of the discrepancy.

Reality Show

A reality show chooses contestants to compete for cash and prizes. The contestants chosen are divided into four clans as shown. You are in Clan 1.



One contestant is randomly chosen from all the contestants to complete an obstacle course.

1. Is any clan more likely to have a member chosen? Explain.
2. What is the probability that you are chosen?
3. What is the probability that a member from your clan is chosen?
4. What is the probability that a male contestant is chosen?
5. What is the probability that a female contestant is chosen?
6. After the first round, 3 contestants from Clan 1, 5 contestants from Clan 2, 1 contestant from Clan 3, and 4 contestants from Clan 4 are eliminated. Another contestant is then randomly chosen from all the remaining contestants. Is any clan more likely to have a member chosen? Explain your reasoning.

Map of Ancient Rome

Packet

Directions: Use several map sources to label the map of Italy below. #27

Label the following countries:

- Italy
- Sicily
- Sardinia

Label the following cities on the map:

- ★ Rome
- Florence
- Milan
- Naples
- Venice

Label the following bodies of water:

- Tyrrhenian Sea
- Ionian Sea
- Adriatic Sea
- Mediterranean Sea



Draw in and label the Tiber River
Draw in and label the Apennine Mountains

Lastly:

Create a legend in the empty box
Color the mountain chain brown
Color the land green
Color the bodies of water blue

Legend

Name: _____ Map of Italy

Map of Italy



THE GEOGRAPHY OF ITALY

Did you know that ancient Rome was one of the largest ancient civilizations? The Romans were able to grow their empire because of their strong government and army. They also were known as cruel conquerors because they would frequently take over a new land and claim it as their own. Sometimes they made the people they conquered into their slaves.

Even today their legacy lives on through perfectly preserved architectural feats, historic buildings, and incredible artwork. These are just a few of the many contributions that the ancient Romans gave the world. Let's take a trip back in time to see the many ways the ancient Romans influenced the world!

Italy is a peninsula meaning it's surrounded by water on three sides. It's also very mountainous which provided extra protection from invaders during the ancient times. The temperate climate allowed people to grow crops such as grapes, olives, barley and wheat year-round.

Being surrounded by water had its benefits for the people who lived there several thousand years ago. It offered an abundant supply of fish, protection from invaders, and transportation by boat to the neighboring cities and countries.



Explain how Rome was naturally protected from invaders?

What do you think is meant by a temperate climate?

Name: _____

Name: _____

SPOTLIGHT ON GEOGRAPHY

How did the mountains protect the Romans?

How did living near the sea shape their lives?

How were they able to grow their empire?

Name three natural resources and tell how each one was used:

1.

2.

3.



THE LEGEND OF ROMULUS AND REMUS

The Romans believed that Romulus, the first ruler of Rome, founded the city on April 21, 753 B.C.

In the ancient times, children were all told the story of how Romulus and his twin brother,

Remus, were thrown into a basket on the Tiber River by their wicked grandfather. Their

grandfather was the king of Rome who ordered them to be drowned so they would not inherit the throne.

Luckily, they were saved by a mother wolf who rescued them. She took the twin babies to her lair and fed them along with her own wolfcubs.

When Romulus and Remus grew up, they overthrew their grandfather who had tried to kill them.

Then, the twins built a city where the mother wolf had found them.

According to the legend, before the city was completed the brothers had an argument

and Romulus killed Remus. After the city was built, Romulus named it after himself calling it Rome.

Write a brief summary of the legend of Romulus and Remus in your own words?

Name: _____



Name: _____

GREAT ROMAN MYTHS

Myths and other stories about heroes, gods, and animals were a huge part of life in Rome. Most myths taught an important life lesson or explained something in nature that was puzzling to them. It's your turn to be creative and invent your own god or goddess and write a myth about them. Then draw a character or scene from your myth in the box below.



A large, empty rectangular box with a black border, intended for a drawing of a character or scene from the myth.