

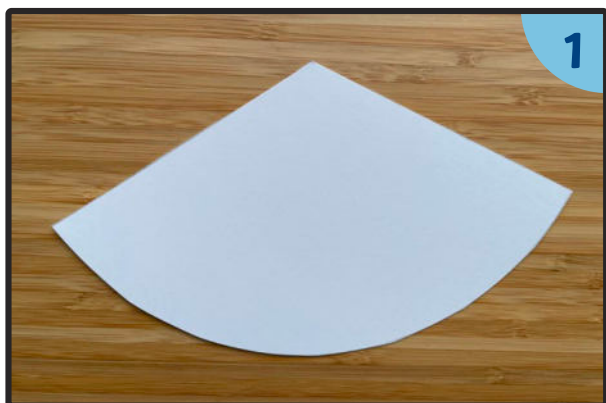
# KS1 Winter Solstice Art Activity Clay Lamp



The winter solstice is a time that marks the beginning of winter. It is the shortest day and the longest night and only happens once a year. People celebrate with candles and lights.

## You will need:

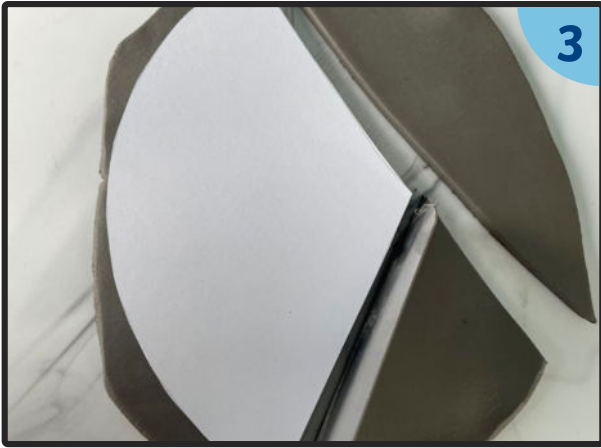
- clay
- clay tools, board and rolling pin
- straw or birthday candle holder
- masking tape
- paint (acrylic, white, green)
- brush (flat)
- scissors
- card (A4)
- battery-operated candle



Cut out the template on the card.



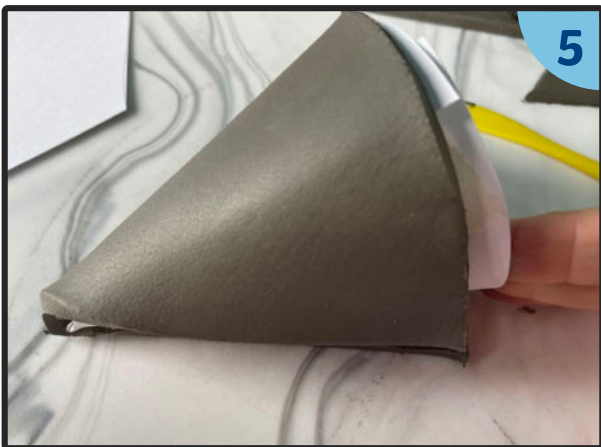
Use the rolling pin to roll the clay out to a rectangle slightly bigger than the template.



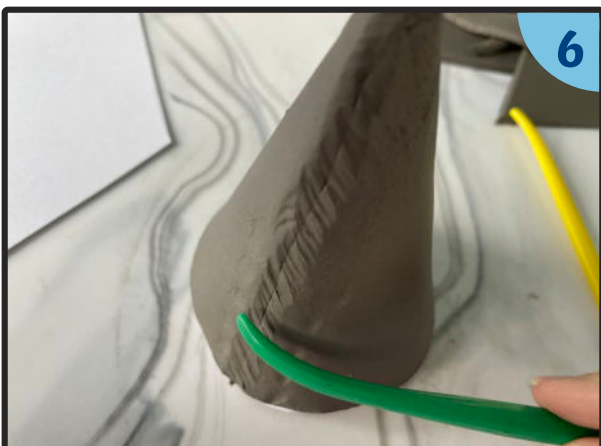
Lay the card cone on top of the clay and cut around it using a clay tool.



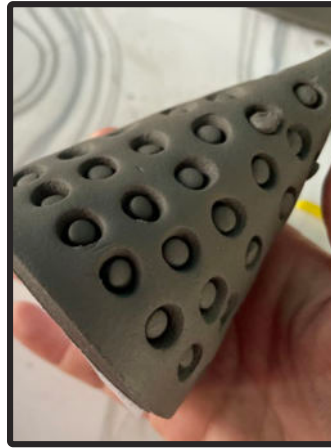
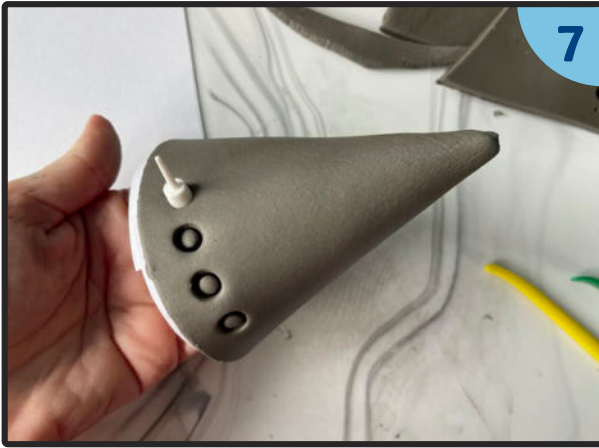
Roll the card shape into a cone and secure it with masking tape.



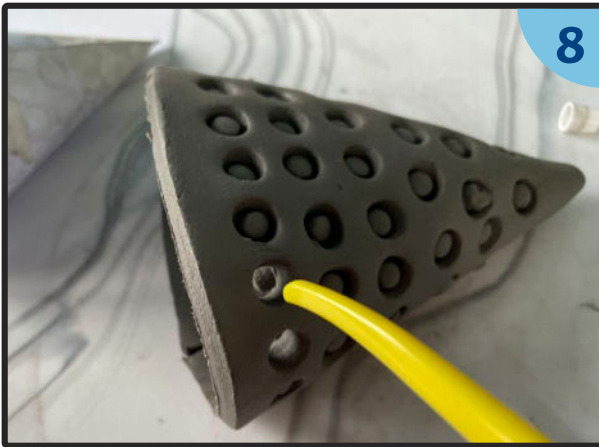
Place the cone onto the clay and roll the clay around it. Squeeze the two edges of the clay together where they meet.



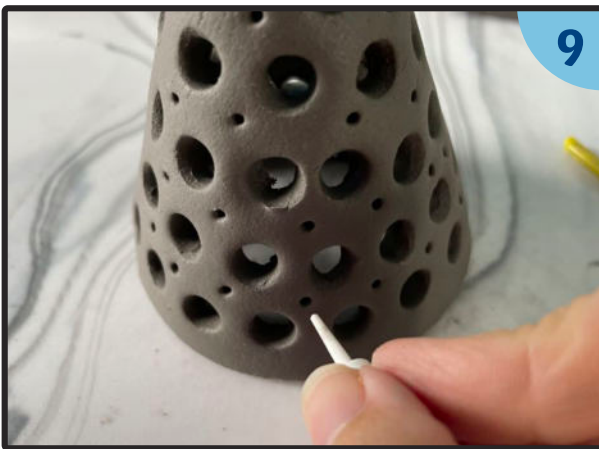
Use a clay tool to smooth the edges down.



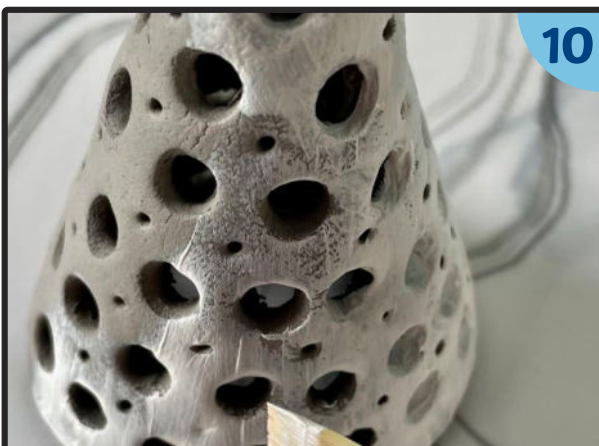
Press the straw or candle holder into the clay to make holes in it. Support the cone on the inside as you press the straw or candle holder into the clay.



Use a clay tool to push out the extra clay and smooth the edges of the holes.



Add more decoration with the clay tools or the other end of the candle holder. Set it aside to dry.



Paint the clay. Remember to paint the insides of the holes too. Set it aside to dry.

**Top Tip** – You may need two coats of paint to ensure the clay has an even coverage!





When the paint is dry, place a battery-operated candle underneath.



Why not group several lamps together or add a little gold decoration?



**Disclaimer:** This resource is provided for informational and educational purposes only. As this resource refers to the use of sharp equipment, small items/loose parts which may present a choking risk, and ingredients/chemicals, you must ensure that an adequate risk assessment is carried out prior to using this resource. You must contact a suitably qualified professional if you are unsure. Twinkl is not responsible for the health and safety of your group or environment. It is your responsibility to ensure the resource and the information/activity it contains are safe and appropriate to use in your situation.

# Template

