

# TODAY'S ARTIST: CHARLES WHITE



Lived 1918- 1979

He graduated from The Art Institute of Chicago in 1938.

He was briefly married to Elizabeth Catlett (a past artist of the day)

# TODAY'S ARTIST: CHARLES WHITE

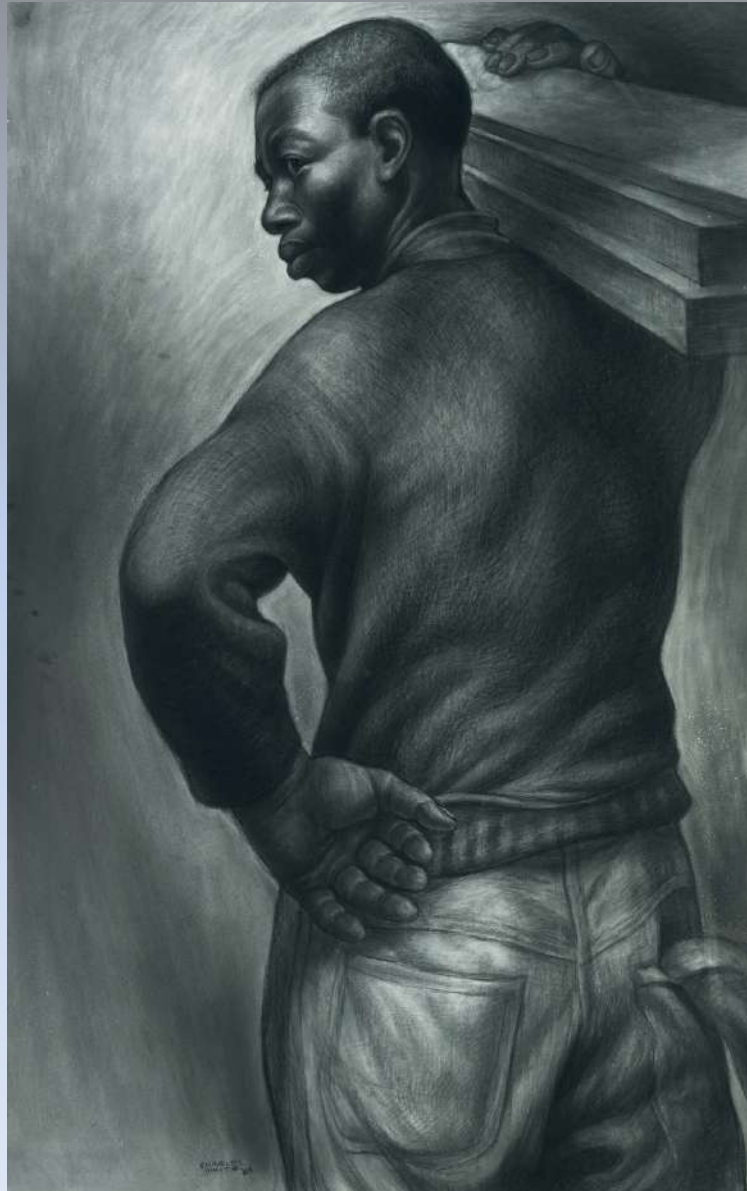




# TODAY'S ARTIST: CHARLES WHITE



# TODAY'S ARTIST: CHARLES WHITE

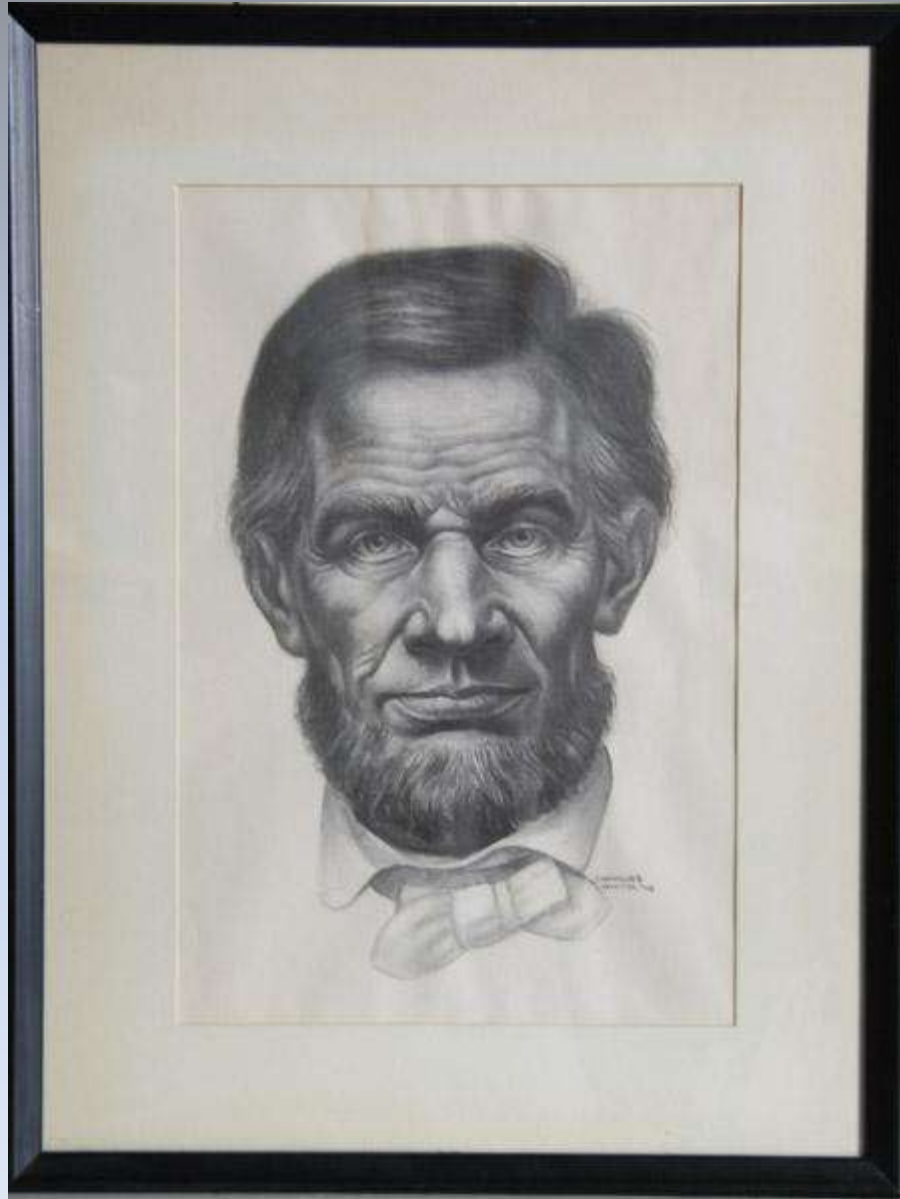




# TODAY'S ARTIST: CHARLES WHITE



# TODAY'S ARTIST: CHARLES WHITE



# TODAY'S ARTIST: CHARLES WHITE





# TODAY'S ARTIST: CHARLES WHITE





# TODAY'S ARTIST: CHARLES WHITE



# TODAY'S ARTIST: CHARLES WHITE



# TODAY'S ARTIST: CHARLES WHITE





# TODAY'S ARTIST: CHARLES WHITE



# TODAY'S ARTIST: CHARLES WHITE



# TODAY'S ARTIST: CHARLES WHITE





# TODAY'S ARTIST: CHARLES WHITE



# TODAY'S ARTIST: CHARLES WHITE



White's best known work is *The Contribution of the Negro to American Democracy*, a mural at Hampton University depicting a number of notable blacks including Denmark Vesey, Nat Turner, Peter Salem, George Washington Carver, Harriet Tubman, Frederick Douglass, and Marian Anderson.