

# What Makes The Weather Change?

Review Game

# Rules:

- Round Robin - One representative from each lab table will come to a buzzer to receive a question on the board
- Each correct response results in 1 point

# Rules Continued:

- Incorrect answer: Same question goes to any other person remaining that did not buzz in before - awarded 1 point
  - Next question will go to another set of lab table representatives
- Outside talking amongst lab tables during a round results in deduction of point

# Rules Continued:

- First response - only response (cannot change answer)

# Question 1

- The amount of water vapor in the air is called what?

# Question 2

- What type of clouds are associated with a storm?
  - A) Stratus
  - B) Cumulonimbus
  - C) Cirrus
  - D) Cirrocumulous
-

# Question 3

- When the sun shines light to heat the ground, it is called what?

# Question 4

- When the ground is heated and transfers to the air, it is called what?



# Question 5

- When warm air rises, and starts a certain cycle, it is called what?

# Question 6

- \_\_\_\_\_ air rises and  
\_\_\_\_\_ air sinks

# Question 7

- The more intense the light, the \_\_\_\_\_ the temperature



# Question 8

- What causes seasons to be different in the Northern and Southern hemispheres?

# Question 9

- What causes the different seasons?

# Question 10

- Where is light intensity the greatest?

# Question 11

- Why does the intensity of light reaching Earth at different latitudes vary?
  - a) Because the Earth rotates
  - b) Because the Earth revolves around the Sun
  - c) Because the Earth is a spherical shape
  - d) Because there are leap years

# Question 12

- The difference in intensity is because the same amount of light is being spread over a \_\_\_\_\_ area



# Question 13

- What is the shape of Earth's orbit around the Sun?

# Question 14

- What causes years to occur?
- Extra point - how long exactly does it take for the Earth to complete this?

# Question 15

- What causes day and night to occur?

# Question 16

- Moving air created by air pressure / temperature differences is called what?

# Question 17

- What direction do air pressure systems move? (must be specific based on air pressure level)

# Question 18

- What will humidity do as a storm begins to form?

# Question 19

- What will temperature do as a storm begins to form?
- Extra point - what will temperature do as a storm occurs/passes?

# Question 20

- What is Earth's axis always pointing towards?



# Question 21

- What angle is Earth's tilt?

## Question 22

- What will air pressure do as a storm begins to form?

# Question 23

- What air pressure is associated with a stable atmosphere?

# Question 24

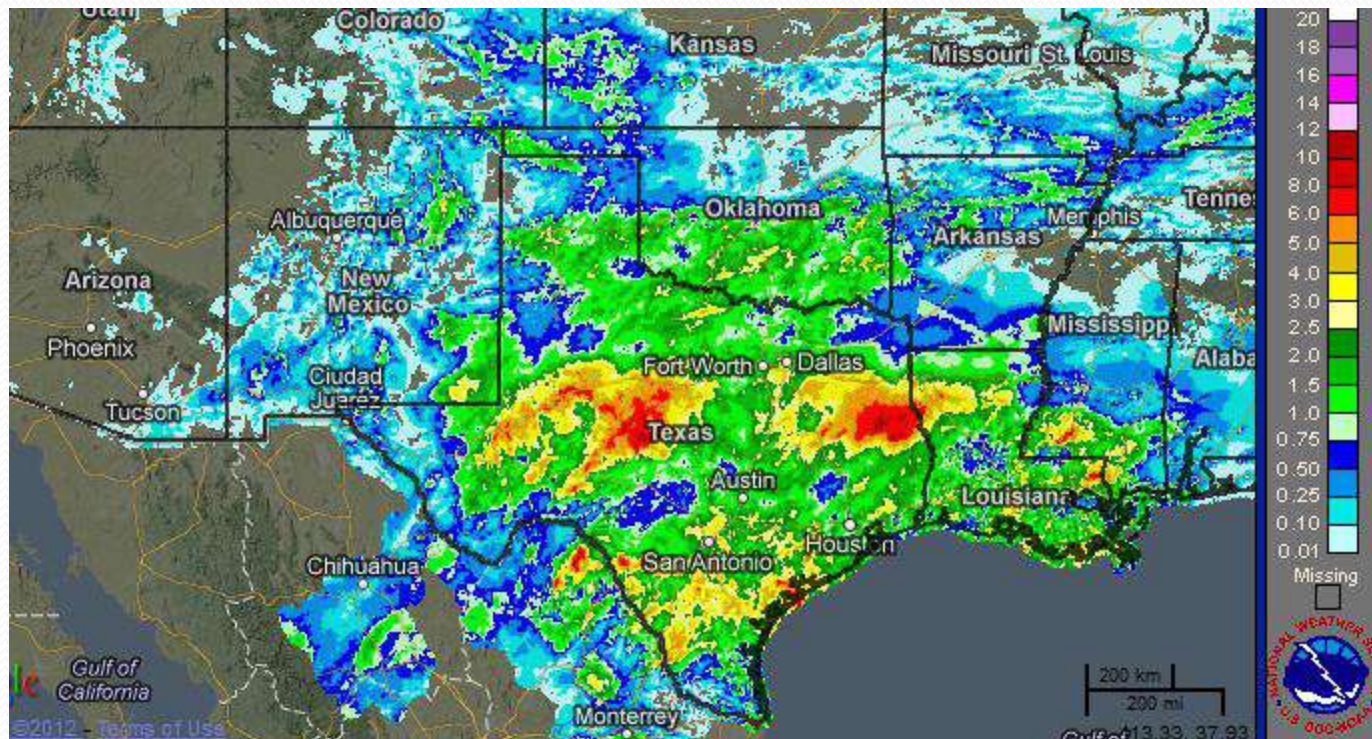
- What air pressure is associated with an unstable atmosphere?

# Question 25

- What does acid rain do to plants/trees?

# Question 26

- What color represents the highest level of precipitation occurring?



# Question 27

- Which of the following event(s) is caused by the production of sulfur dioxide and nitrogen oxides in the air?
  - a) The greenhouse effect (climate change)
  - b) Smog
  - c) Ozone depletion
  - d) Acid rain

# Question 28

- What season(s) occur when the tilt of the Earth's axis is equal?



# Question 29

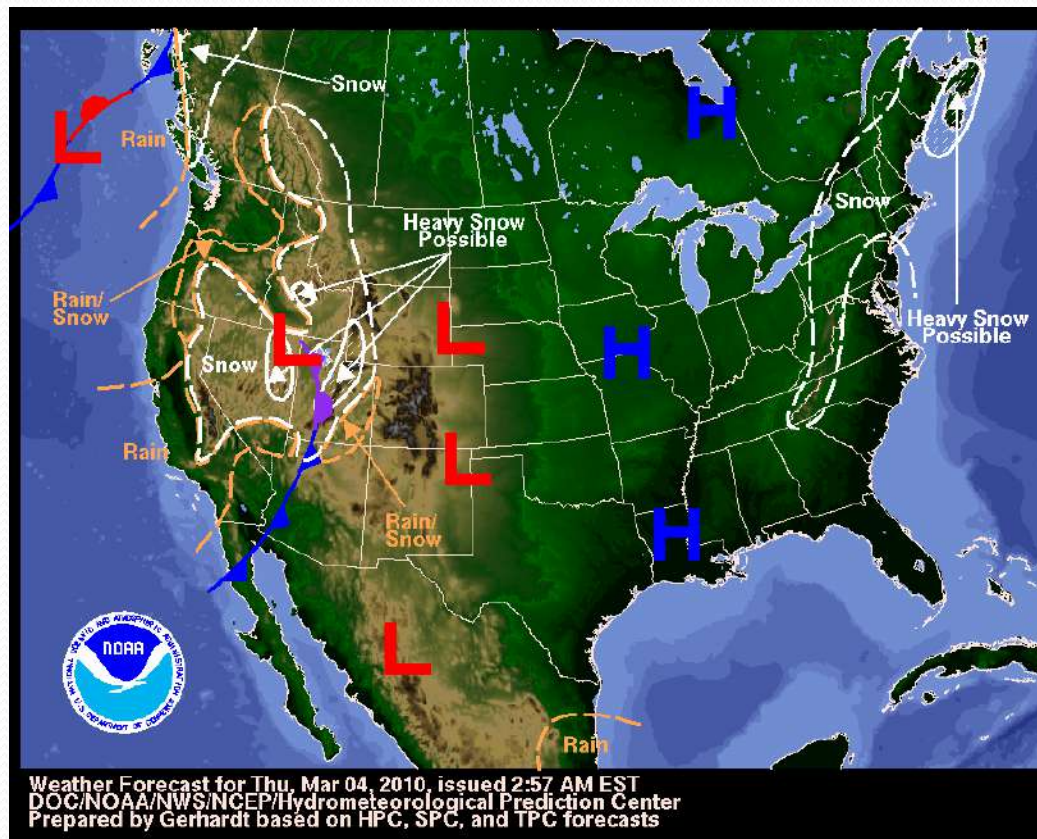
- How are the molecules arranged in a high air pressure system?

# Question 30

- How are the molecules arranged in a low air pressure system?

# Question 31

- Based on the information provided on the map, what season is occurring in the United States?



# Question 32

- What process causes water vapor to rise in the atmosphere?

# Question 33

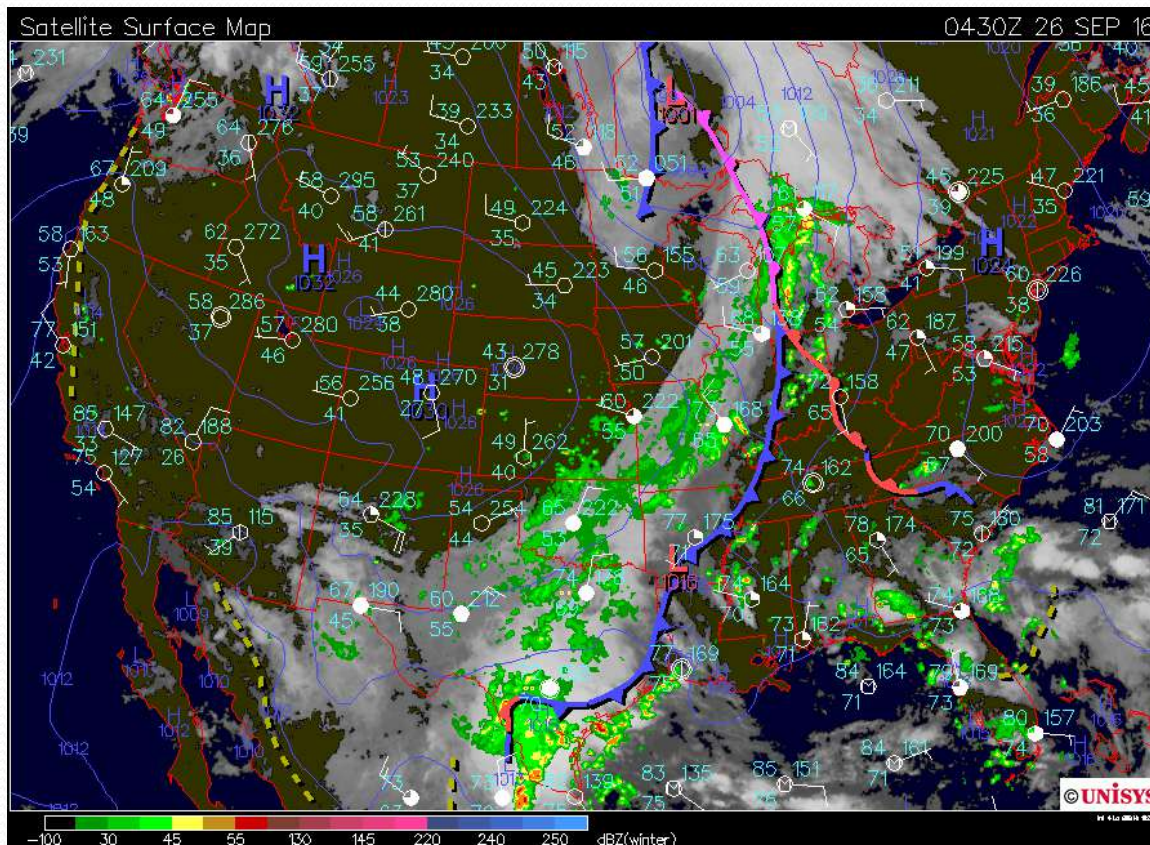
- What process cools this water vapor to begin to form a cloud when it cools?

# Question 34

- What is a device that is used to measure air pressure called?

# Question 35

- Based on the information provided on the map, what type of clouds could be covering southern Texas?





# Question 36

- What season would be occurring when light intensity is very weak at the North Pole?



# Question 37

- What season would be occurring when light intensity is stronger at the South Pole?

# Question 38

- A region of the world with similar weather patterns over a long period of time is referred to as a what?

# Question 39

- What molecule is responsible for trapping heat in the atmosphere?

# Question 40

- How does air move in a convection/electric oven?

# Bonus Question

- How can you prove / tell that the Earth is revolving around the Sun?

# Items To Study For Test

- DQB – scientific principles and definitions
- Note sheets / diagrams
- IQWST Activities
- Application of Principles
- **Be prepared to make scientific claims of how storms are formed / are they similar or different around the world**