

# Wet-in-Wet Painting

---

## ○ Three styles:

- Direct
- With Line
- Within Shapes

○ You will need 3 pieces of watercolor paper for this exercise.

# Direct Wet-in

---

- ⑩ Wet your paper completely
- set it down directly
- (wash your working surface)
  - ⑩ Using strong colors
  - blocking in your composition
  - with paint
- ⑩ Working wet-in-wet
- in a little less control
- Be patient and try
- happens to your advantage.



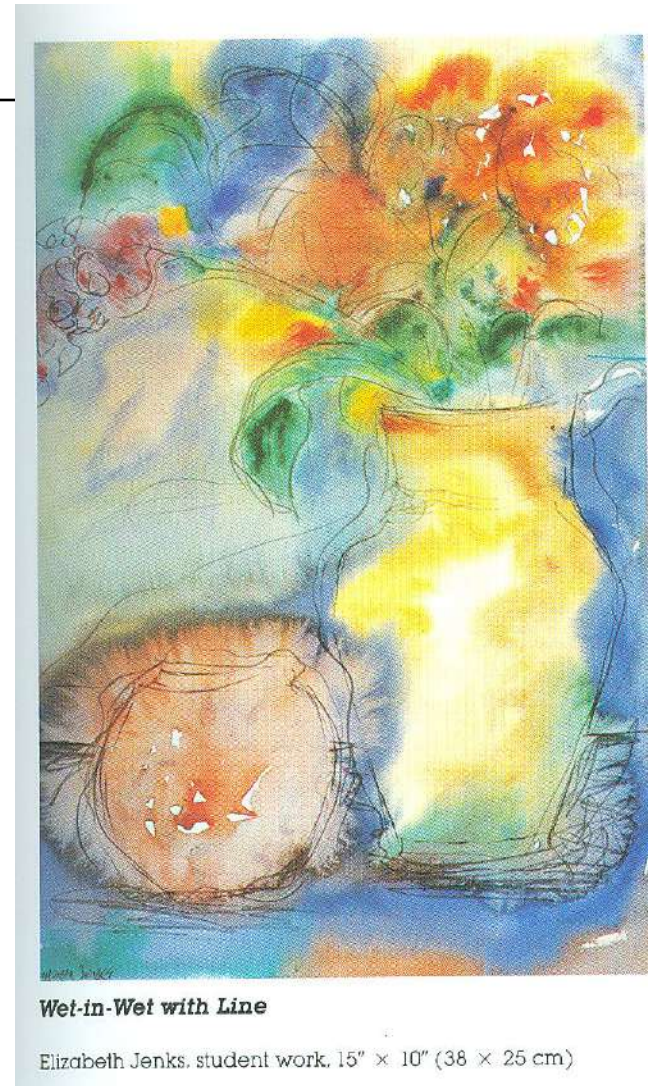
*Direct Wet-in-Wet Painting*

Ellen Ellis, student work, 12" × 11" (30 × 28 cm)

# Wet-in-Wet with Line

---

- Make a pencil drawing of your still life before you soak your paper.  
(this should be done in a gesture-like fashion)
- Paint as before, only this time base your flow of paint on the structural lines.
- Do not, however, let the lines restrict your paint flow.

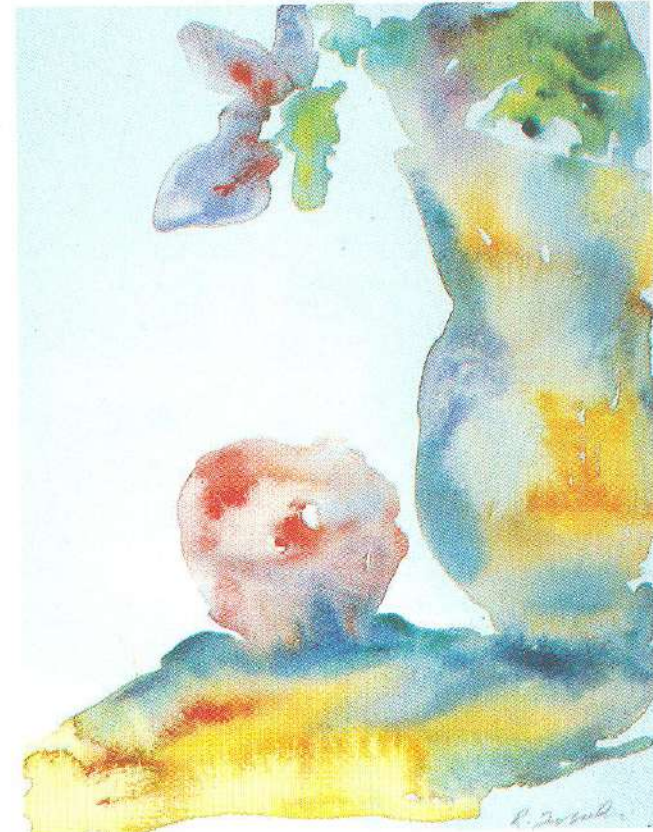




# Wet-in-Wet within Shapes

---

- On dry paper, using clean water, paint the basic shapes of your still life.
- Immediately drop in a variety of Colors.
- The edges you have defined will hold the color, but it will run within the space.



**Wet-in-Wet within Shapes**

Regina Tuzzolino, student work, 10" × 7½" (25 × 19 cm)