

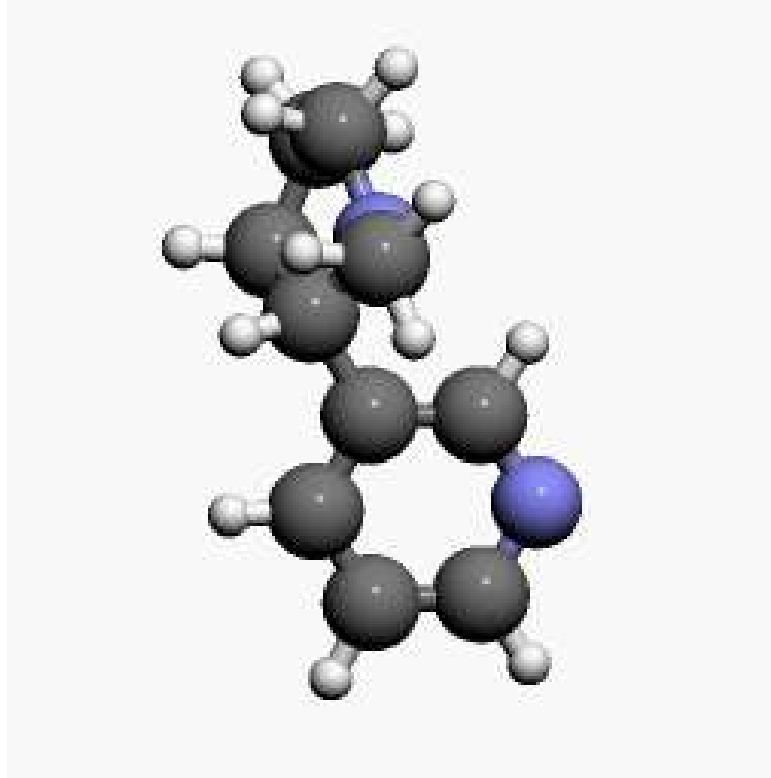


Unit 3: What's So Bad About E-Cigarettes and Vape Pens?



STANFORD
UNIVERSITY

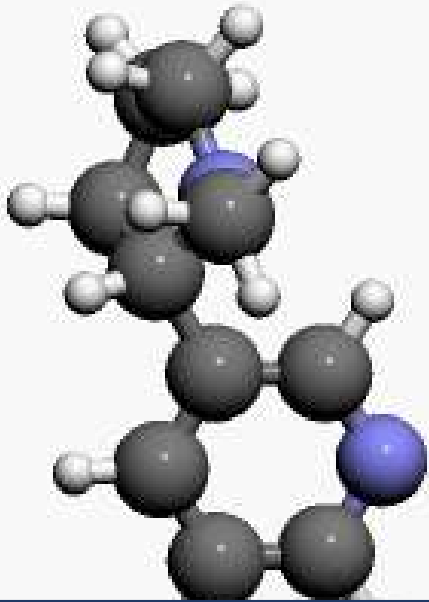
© Stanford University



Effects of Nicotine

What is Nicotine?

Nicotine Molecule



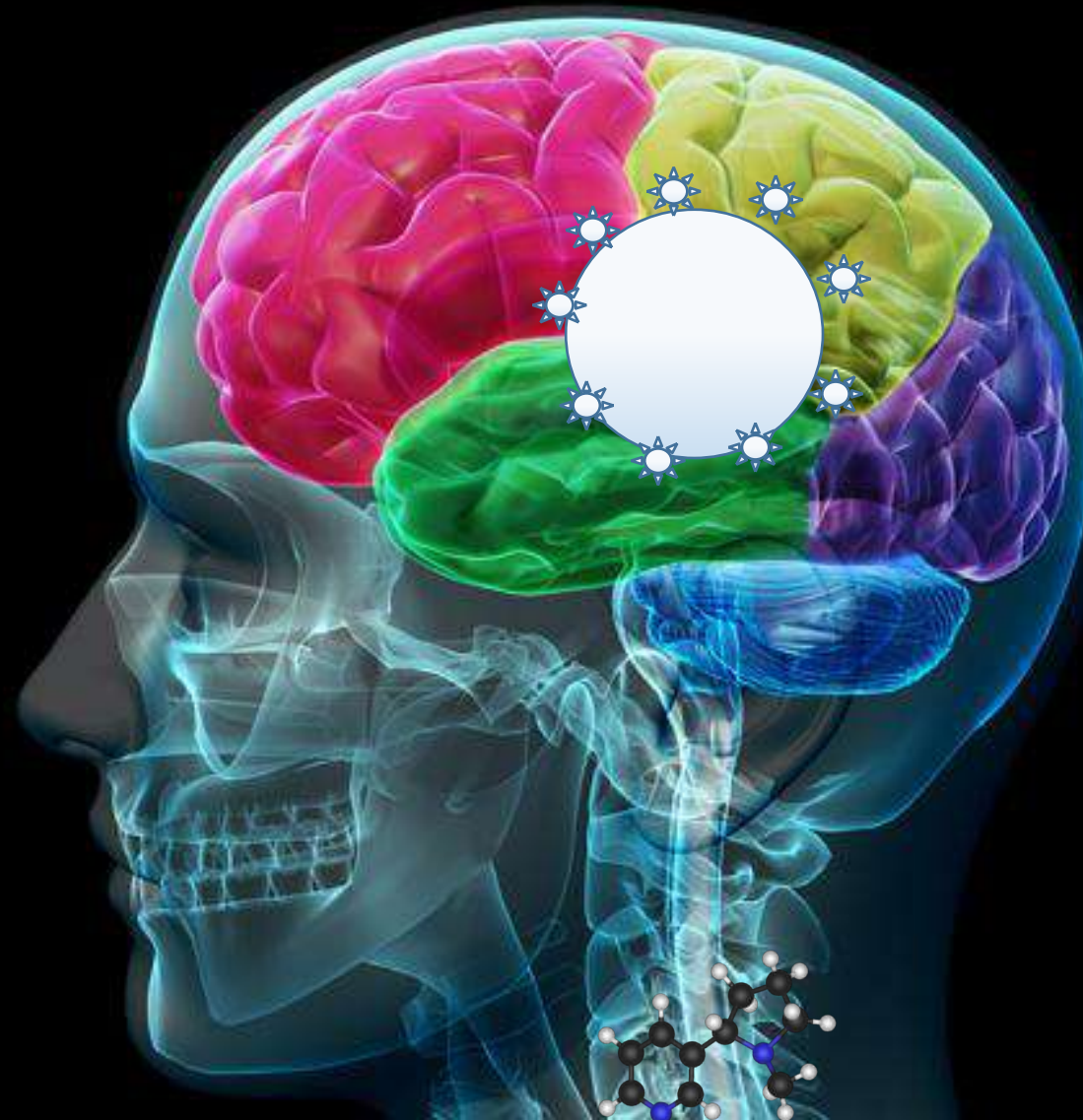
- Drug
- Stimulant
- Highly Addictive
- Causes changes in brain chemistry
- Found in tobacco products

If nicotine is unsafe, why do you think people still choose to use products that have nicotine?

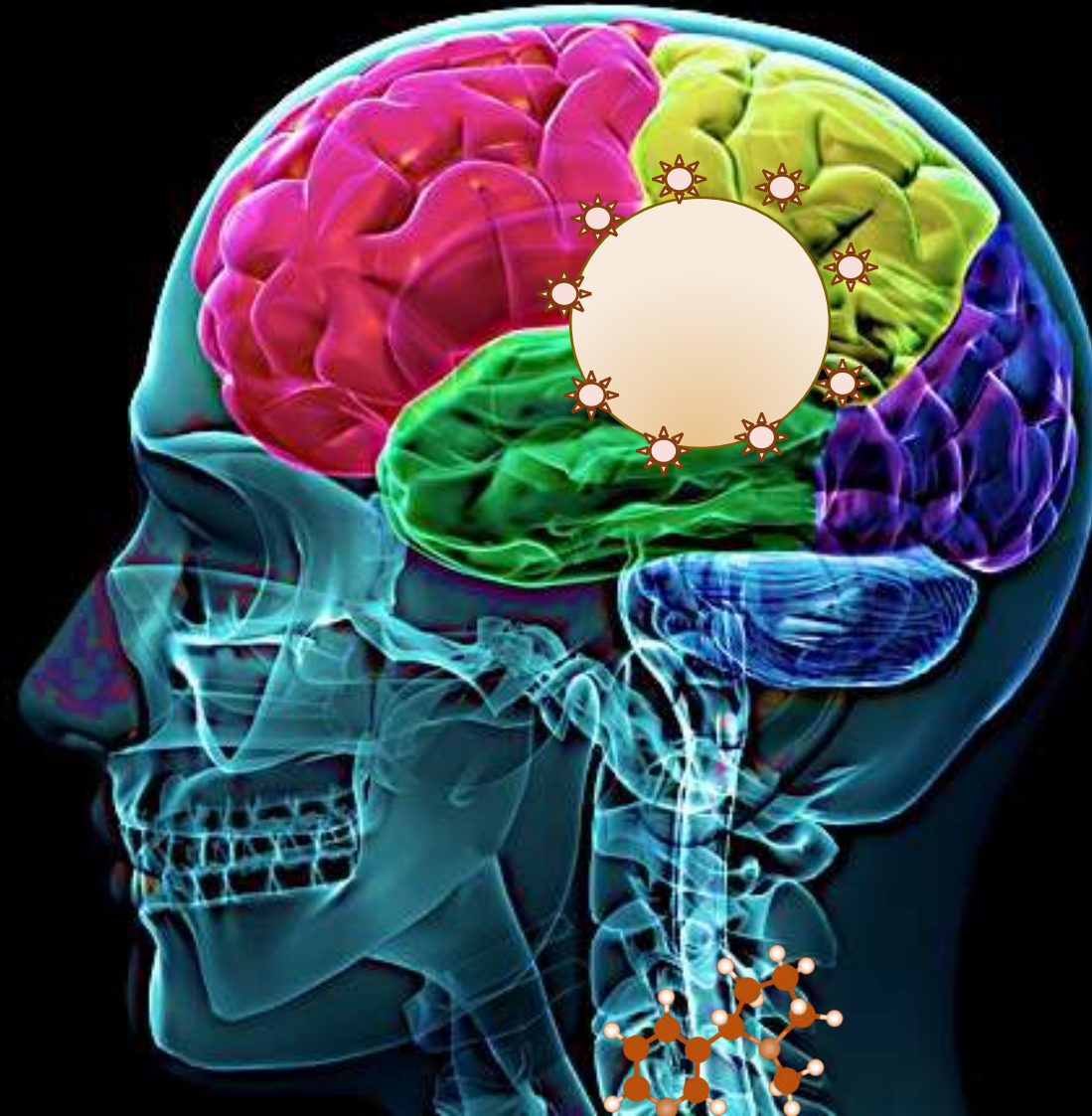
Where Can You Find Nicotine?



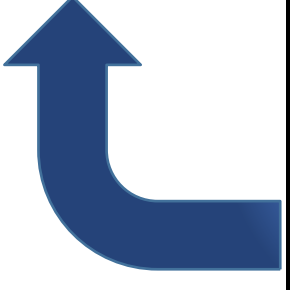
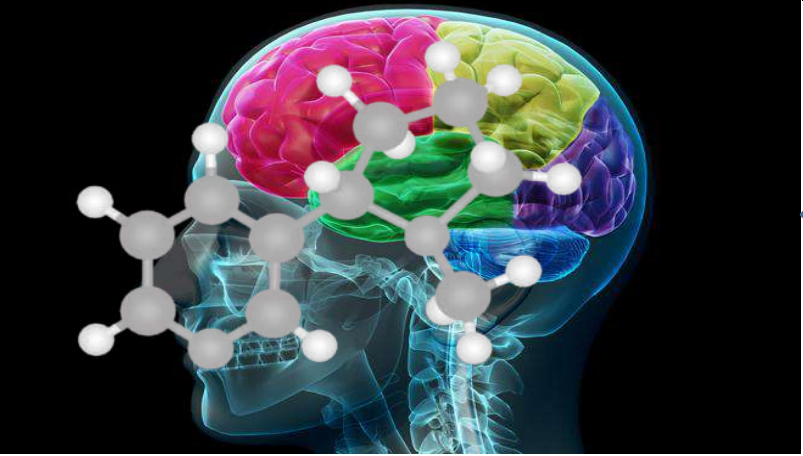
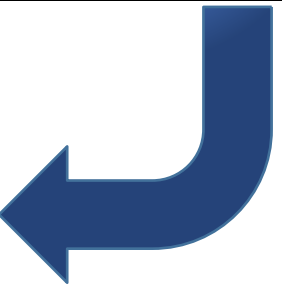
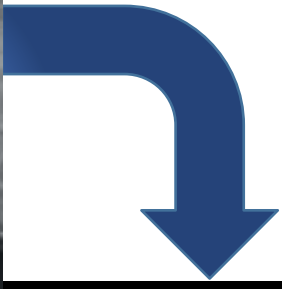
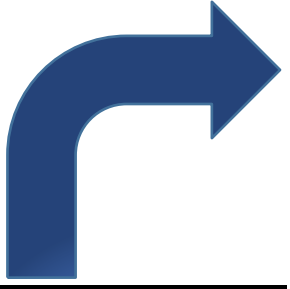
Nicotine in the Brain



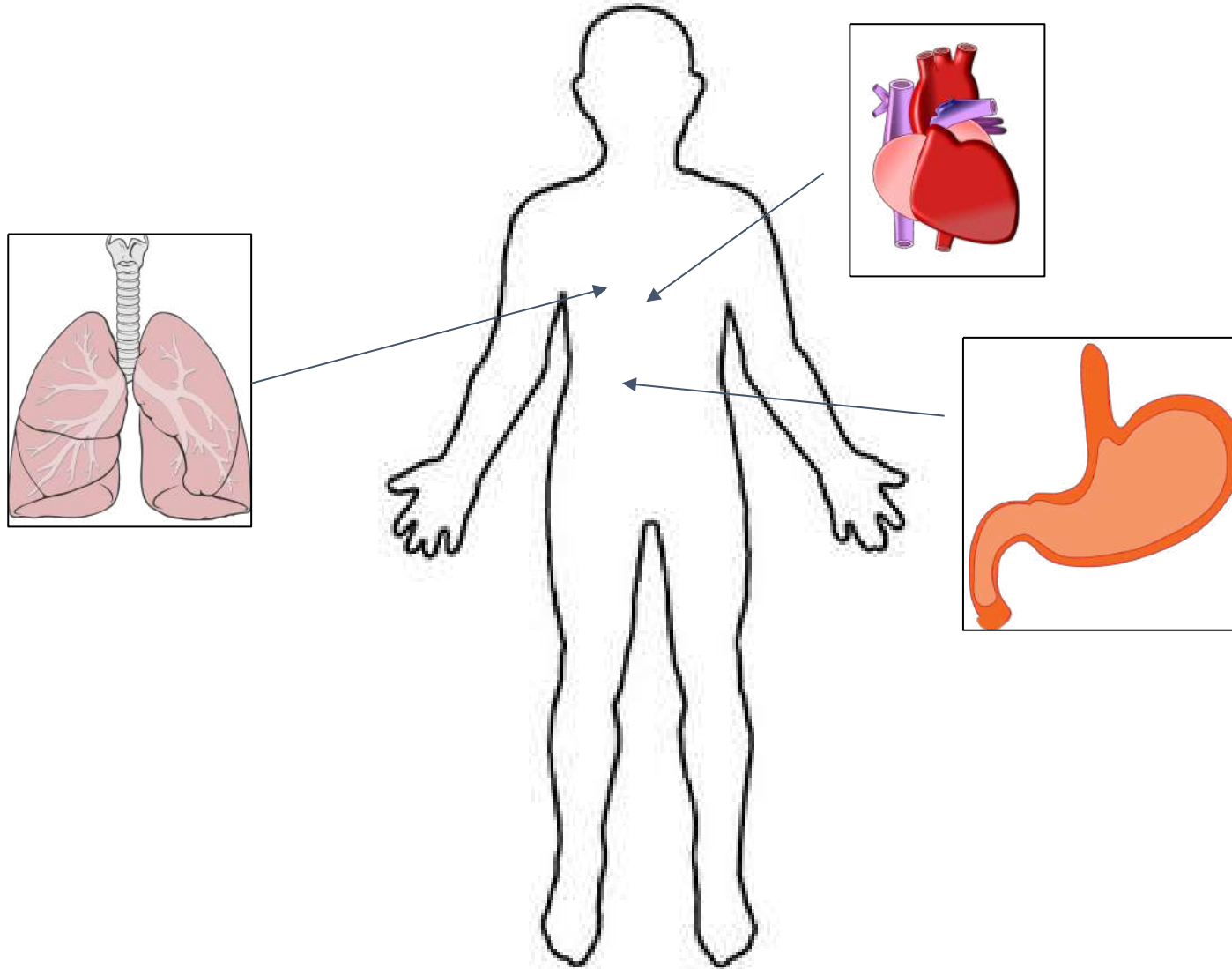
Nicotine Addiction



Cycle of Nicotine Addiction



Nicotine and the Body





Effects of Flavorings



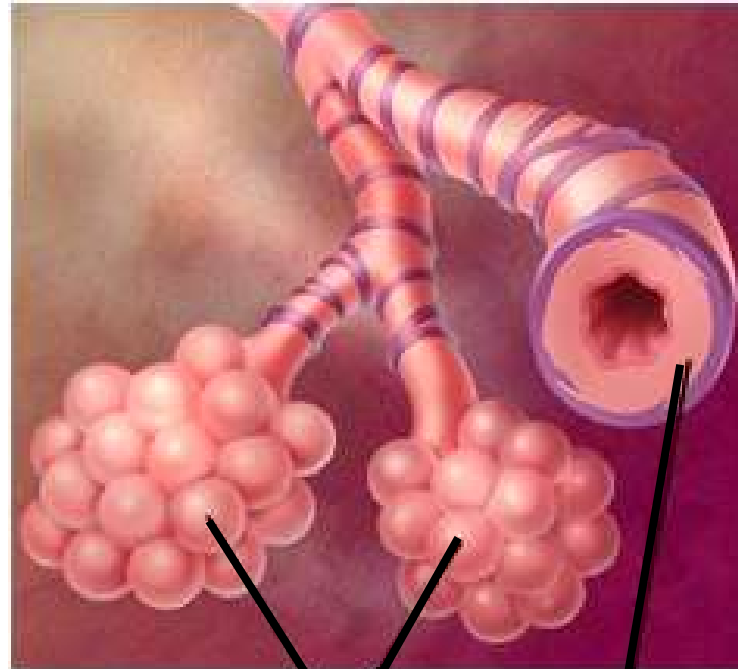
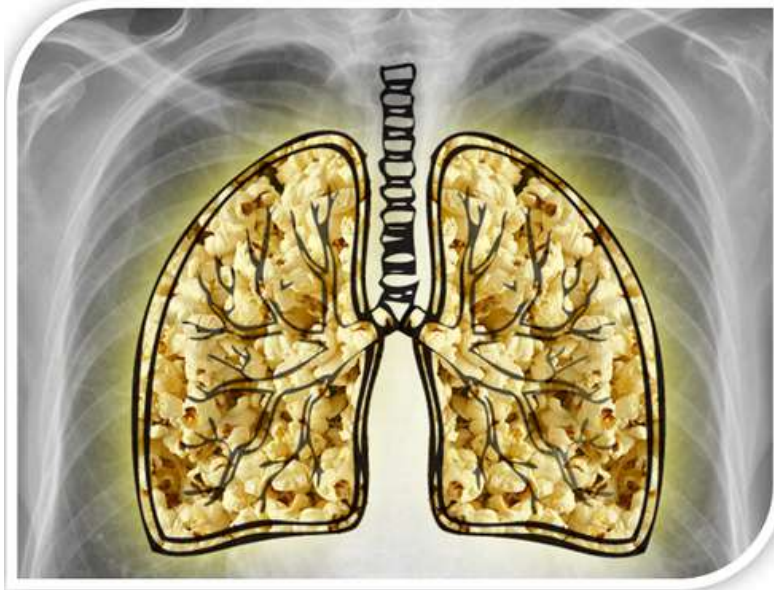
Cytotoxic Flavors

Cinnamon flavors may contain:
Cinnamaldehyde, 2-Methoxycinnamaldehyde

Cherry flavors may contain: Benzaldehyde

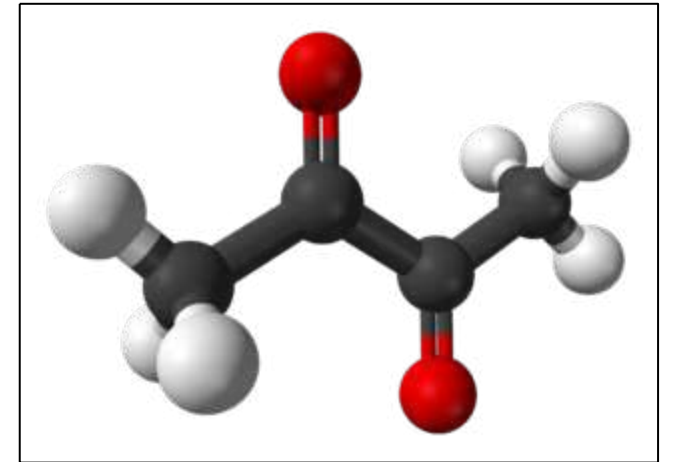


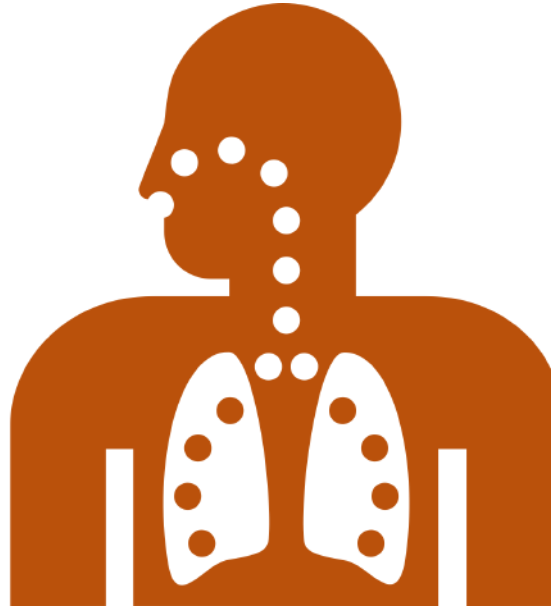
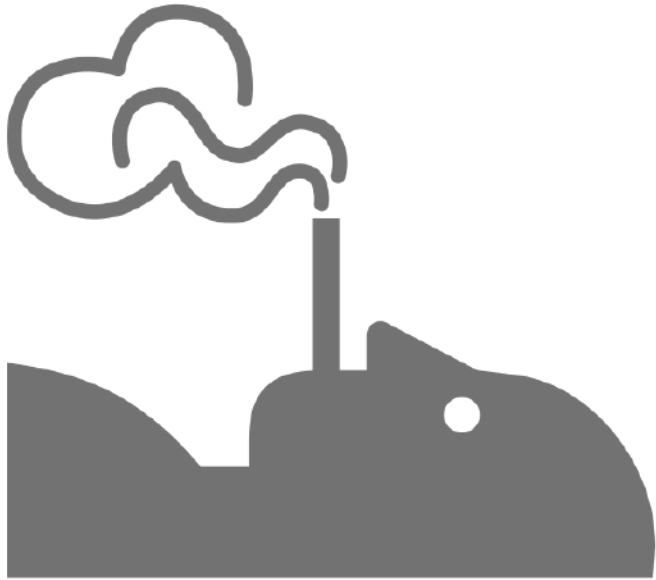
Popcorn Lung



**Alveoli & Bronchioles
Experience scarring**

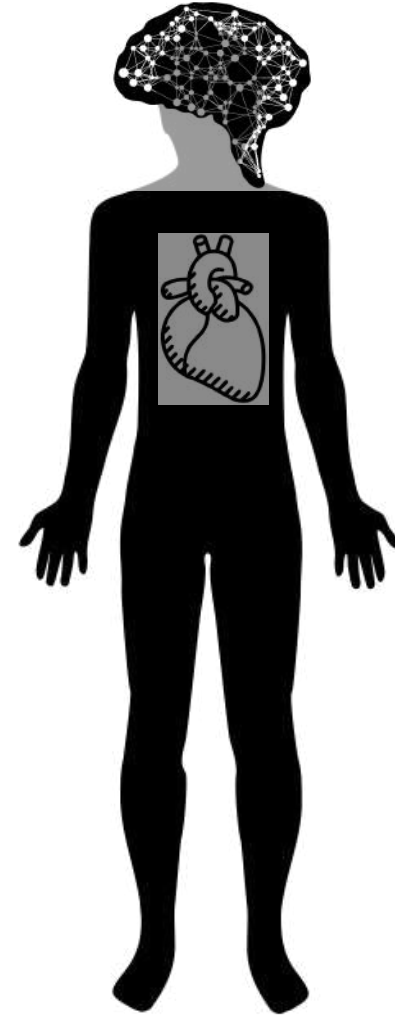
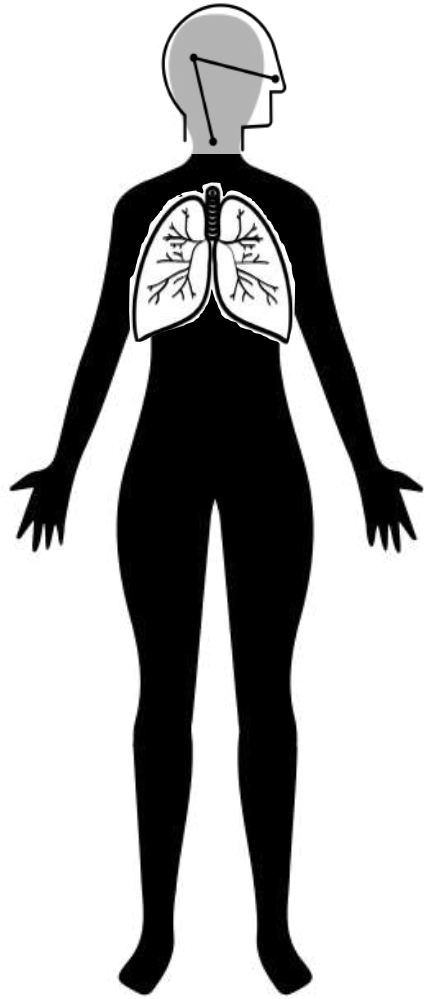
Diacetyl





Effects on Health

Health Risks to E-cig User



Effects of E-Cigs





UNIT 3: Activity 4: : What is Thirdhand Smoke?



SHS



THS

Indoor Surfaces

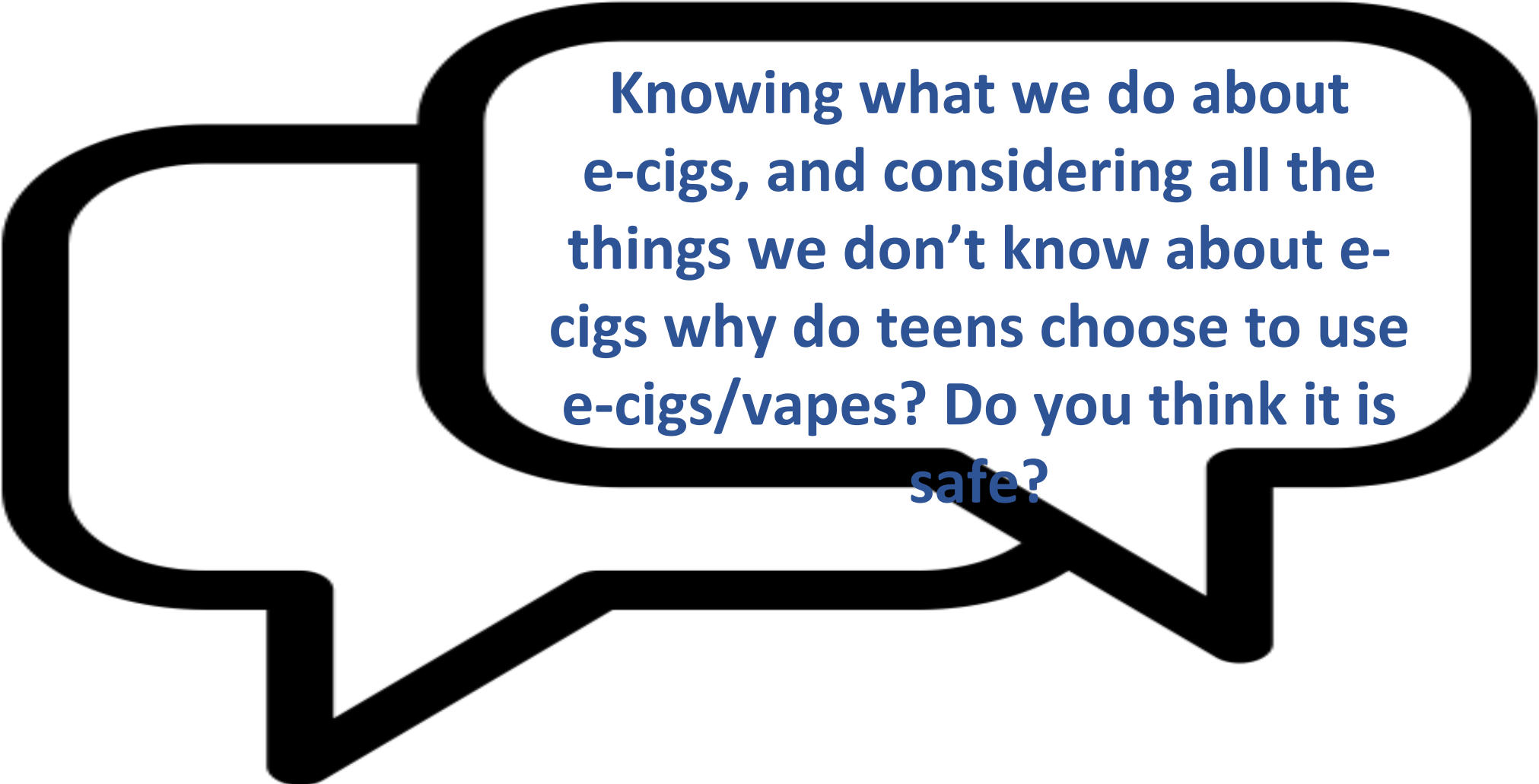
A diagram showing two orange arrows pointing from the left and right images towards a dark blue rectangular box at the bottom. The box contains the text "Indoor Surfaces".

Thirdhand Smoke



Nicotine & other chemicals

Class Discussion



Knowing what we do about e-cigs, and considering all the things we don't know about e-cigs why do teens choose to use e-cigs/vapes? Do you think it is safe?