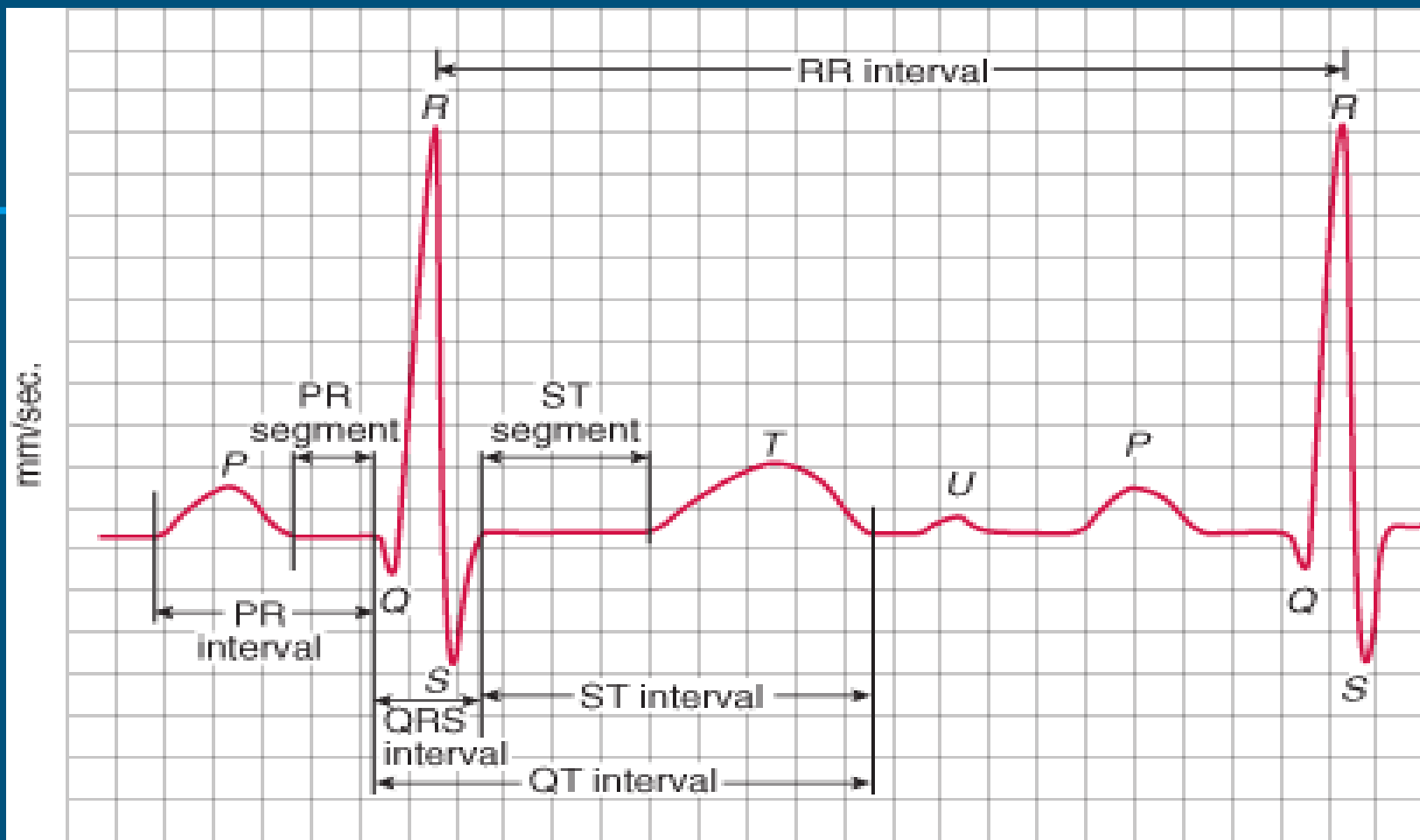




# Waveforms and Rhythms





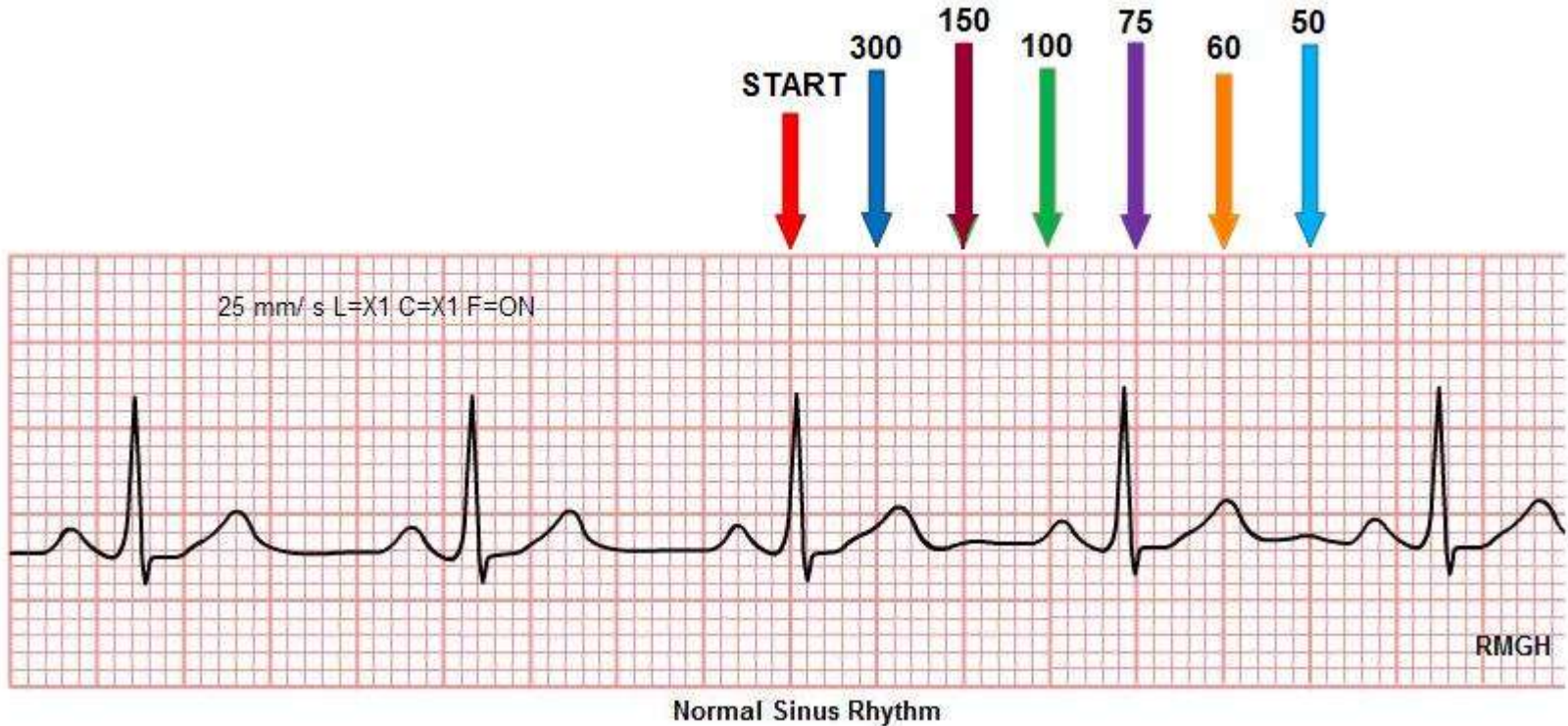
mm/mV 1 square = 0.04 sec/0.1mV

## 1500 Method

- Count the number of small blocks between two consecutive R waves and divide that number into 1500
- For example if the number of small boxes between two R waves is 30, the rate is  $1500/30 = 50$



# 300 Method (Sequence method)



# 6 second rule (gold standard for irregular rate)

