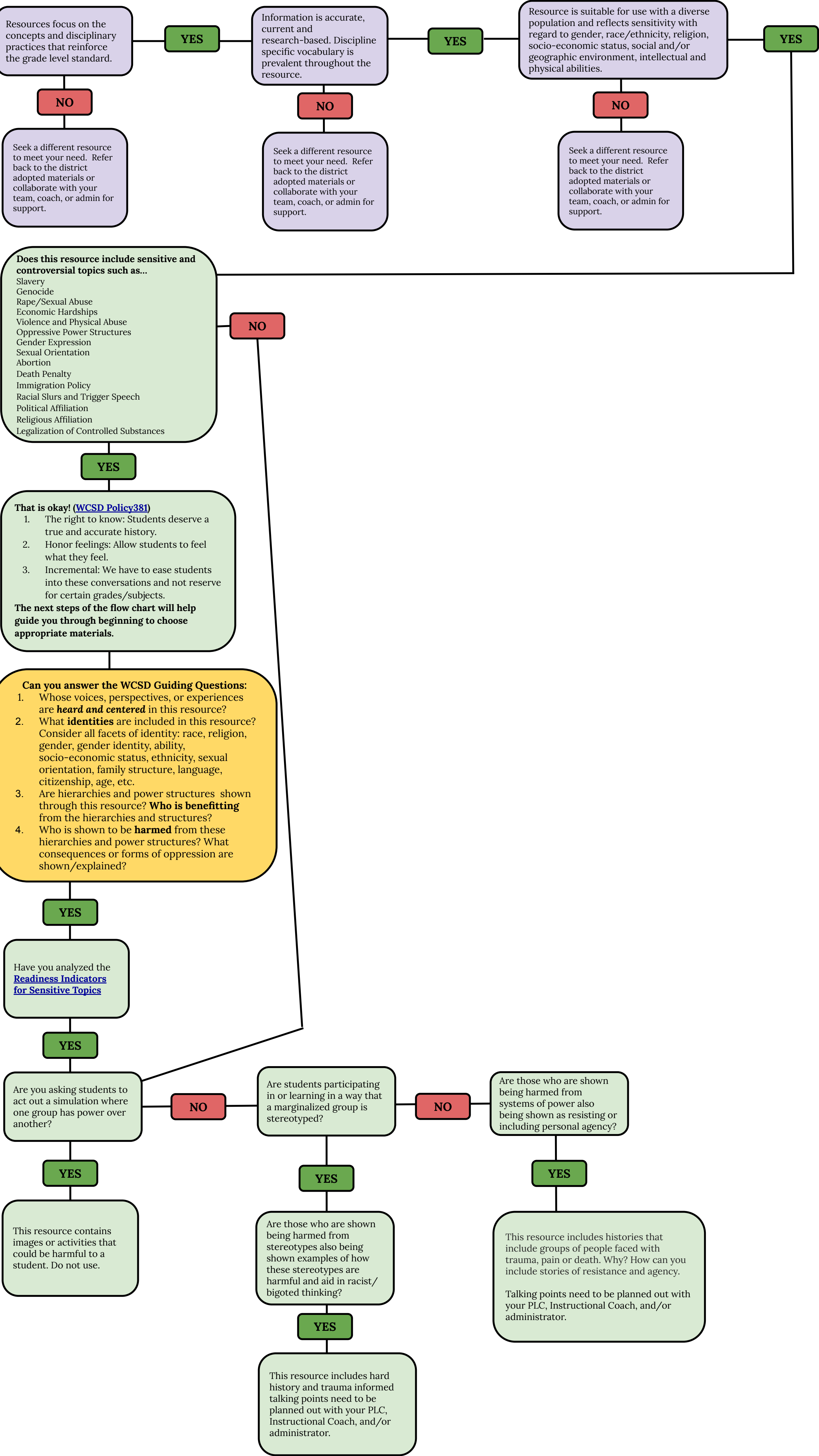


WCSD Supplementary Instructional Resource Flow Chart

In accordance with WCSD Policies [361](#), [362](#), [362.1](#), [381](#), [871](#).

Originally created by: D. Fogarty & K.Lundquist 2021
Adapted from: the Sun Prairie Area School District and
[The Great Lakes Equity Center](#)



Careful planning and attention to sensitive topics is paramount in our efforts to create inclusive teaching and learning environments. Even with thoughtful consideration, we may cause harm without intending to do so.

Should a concern be raised related to a topic/lesson that may be causing trauma, curriculum endorsed prejudice, or any aspect of harm, staff should immediately do the following.

1. Stop.
2. Apologize for the harm you caused.
3. Empathetically listen to the person(s) who was/were harmed.
4. Ask the person what is needed to repair the harm, and take action to follow through on their response.
5. Alert your supervisor to the incident that transpired.
6. Seek advice and support from administrators, instructional coaches, and peers as needed.