

WATERCOLOR

Techniques

AGENDA

Watercolor

Examples

Tools

Techniques Assignment

Album Cover: Brief

Class Materials

Goals

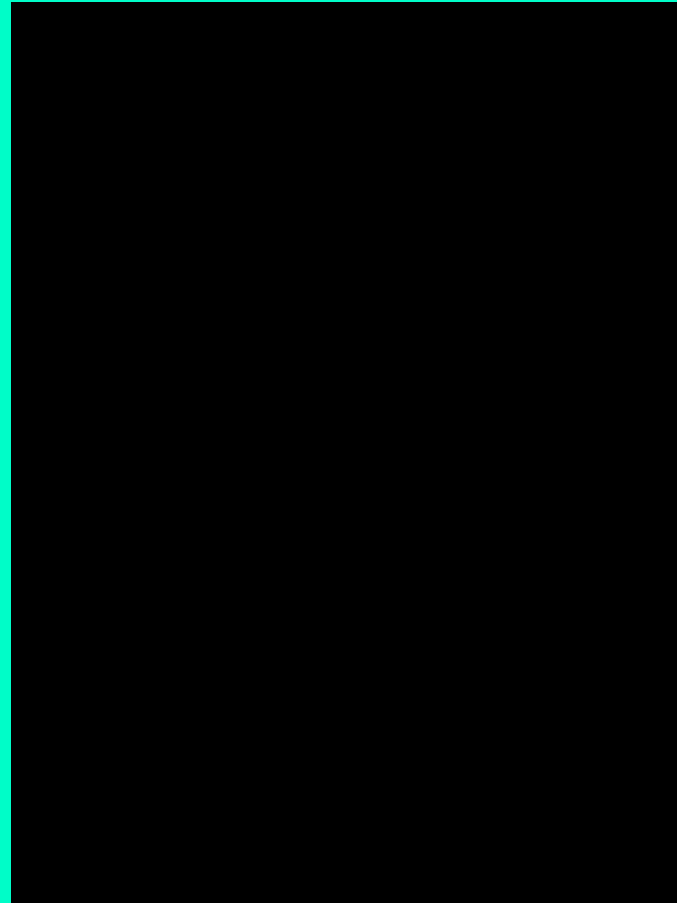
Experiment Time

Tomorrow?



WATERCOLOR

paint made with a water-soluble binder such as gum arabic, and thinned with water rather than oil, giving a transparent color.





SARA KAHN



EMMA LARSON



ALI CAVANAUGH

TOOLS

Watercolor
Pigments

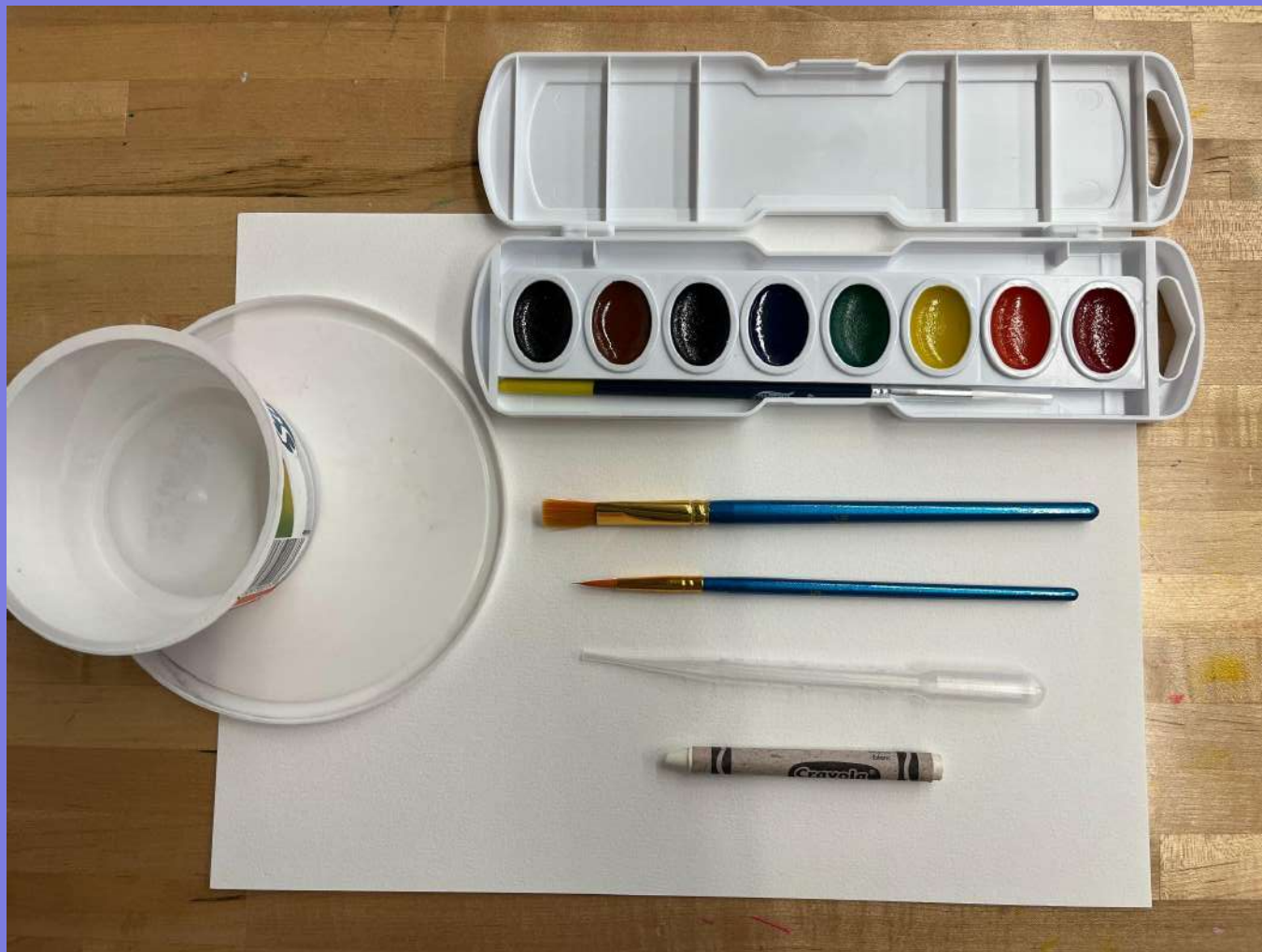
Watercolor Paper

Paintbrushes

Pipette
Eye-dropper

Crayon

Cups and Trays



TOOLS

Rubbing Alcohol

Salt

Bubble-wrap

Plastic-wrap

Paper Towels



BRUSH TECHNIQUES

WET ON DRY

Using the paintbrush pick up water and pigment and apply it to the paper.



WET ON WET

Using a paintbrush wet an area of paper with water, and then apply pigment



GRADED WASH

Using a paintbrush wet paper with water, then apply pigment on one side and use the brush to pull the pigment across the area



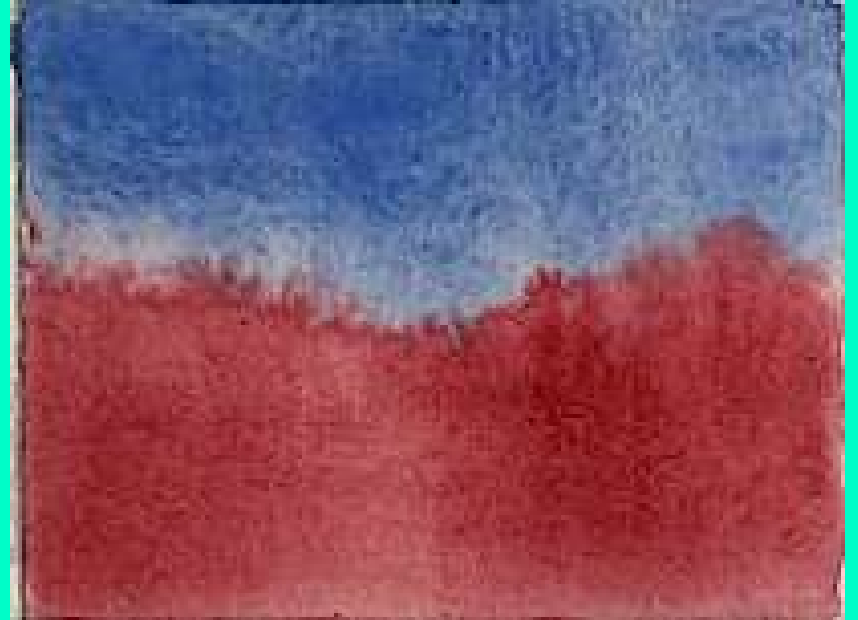
FLAT WASH

Using water and pigment
create a flat even area of
color



BLEEDING COLORS

Using the wet on wet technique apply two different pigments and let the colors bleed into each other



DRY BRUSH

Using a dry brush, pick up pigment and apply it to dry paper



ADDITIVE TECHNIQUES

SALT

Apply pigment to the paper,
then sprinkle it with salt



RUBBING ALCOHOL

Apply pigment to paper, then
spray with rubbing alcohol



RESIST - WAX

Apply wax to paper, then
paint over the top of it



SUBTRACTIVE TECHNIQUES

LIFTING - PAINTBRUSH

Apply pigment and water to paper, then using a dry brush lift the pigment off the paper



LIFTING - PAPER TOWEL

Apply pigment and water to paper, then use a dry crumpled paper towel to lift the pigment off the paper



MOVING - PLASTIC WRAP

Apply pigment and water to
paper, then apply crumpled
plastic wrap and allow to
dry



MOVING TECHNIQUES

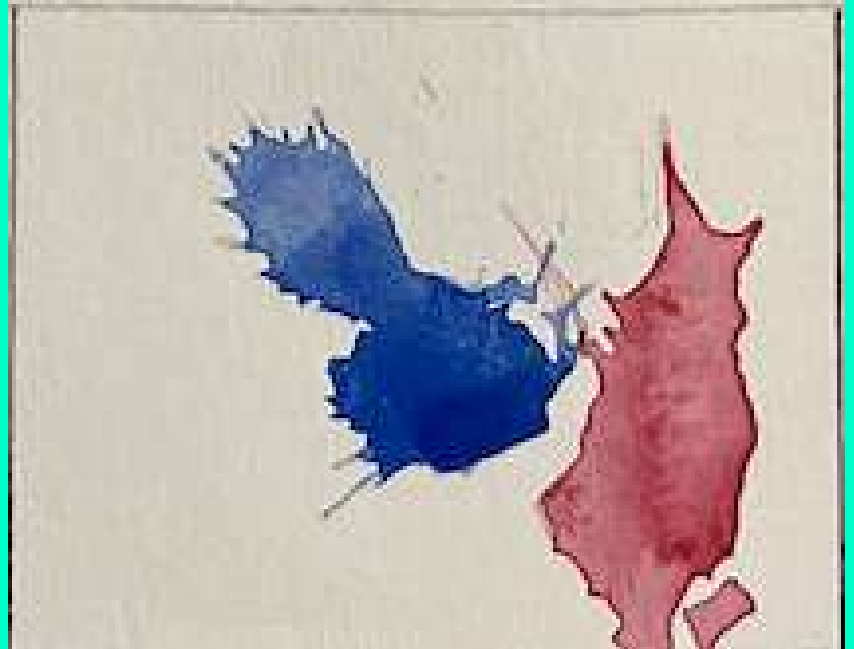
MOVING - BUBBLE WRAP

Apply pigment and water to
paper, then apply bubble
wrap and allow to dry



MOVING - AIR

Apply pigment and water to paper, then using the pipette blow the pigment across the paper

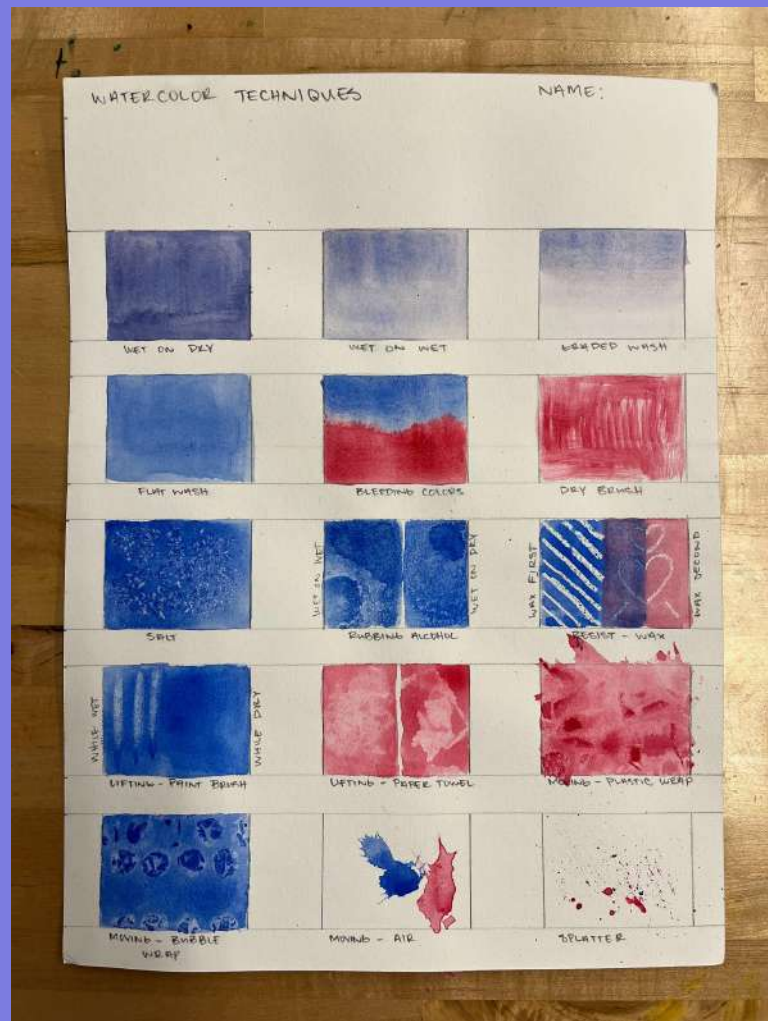


SPLATTER

Fill the paint brush with pigment and then flick the brush at the paper



WATERCOLOR TECHNIQUES ASSIGNMENT



Criteria	Advanced (4)	Meeting (3)	Beginning (2)	Emerging (1)	Missing (0)
Wet on Dry	Technique was completed perfectly	Technique achieved, but with minor errors	Technique attempted, but needs improvement	Attempted, but cannot distinguish technique	Missing
Wet on Wet	“	“	“	“	“
Gradient Wash	“	“	“	“	“
Flat Wash	“	“	“	“	“
Bleeding Colors	“	“	“	“	“

SUPPLY BOX

10 PAINTBRUSHES

4 PIPETTES

SMALL BAG OF SALT

1 WHITE CRAYON

RUBBING ALCOHOL

3 SQUARES OF BUBBLE WRAP



SUPPLY COUNTER

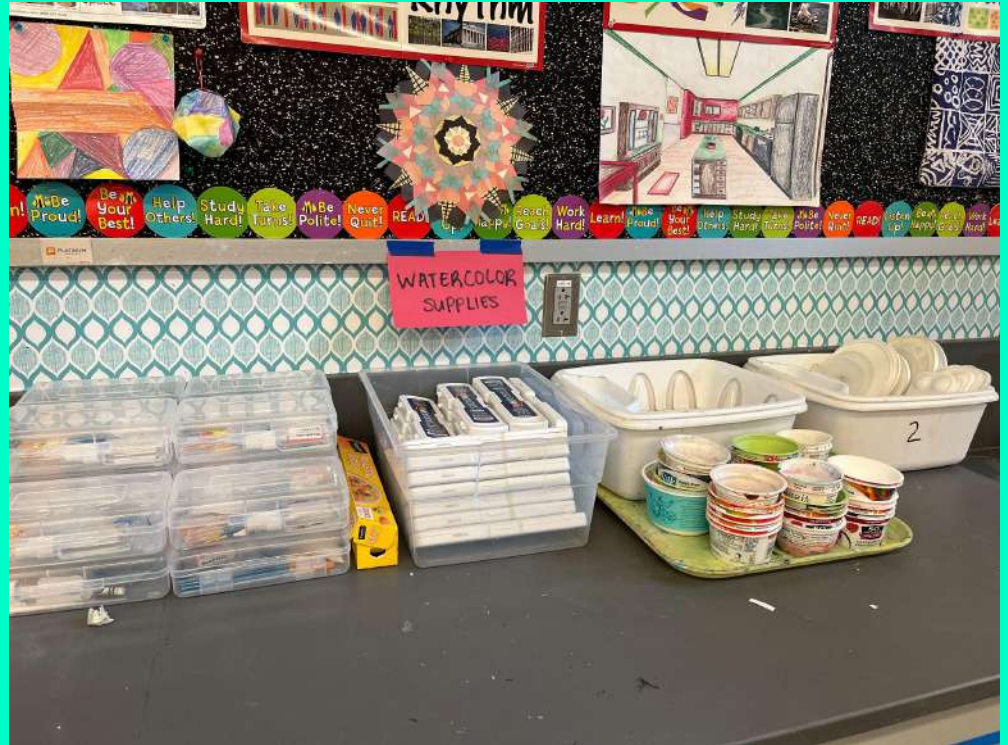
SUPPLY BOX (ONE PER TABLE)

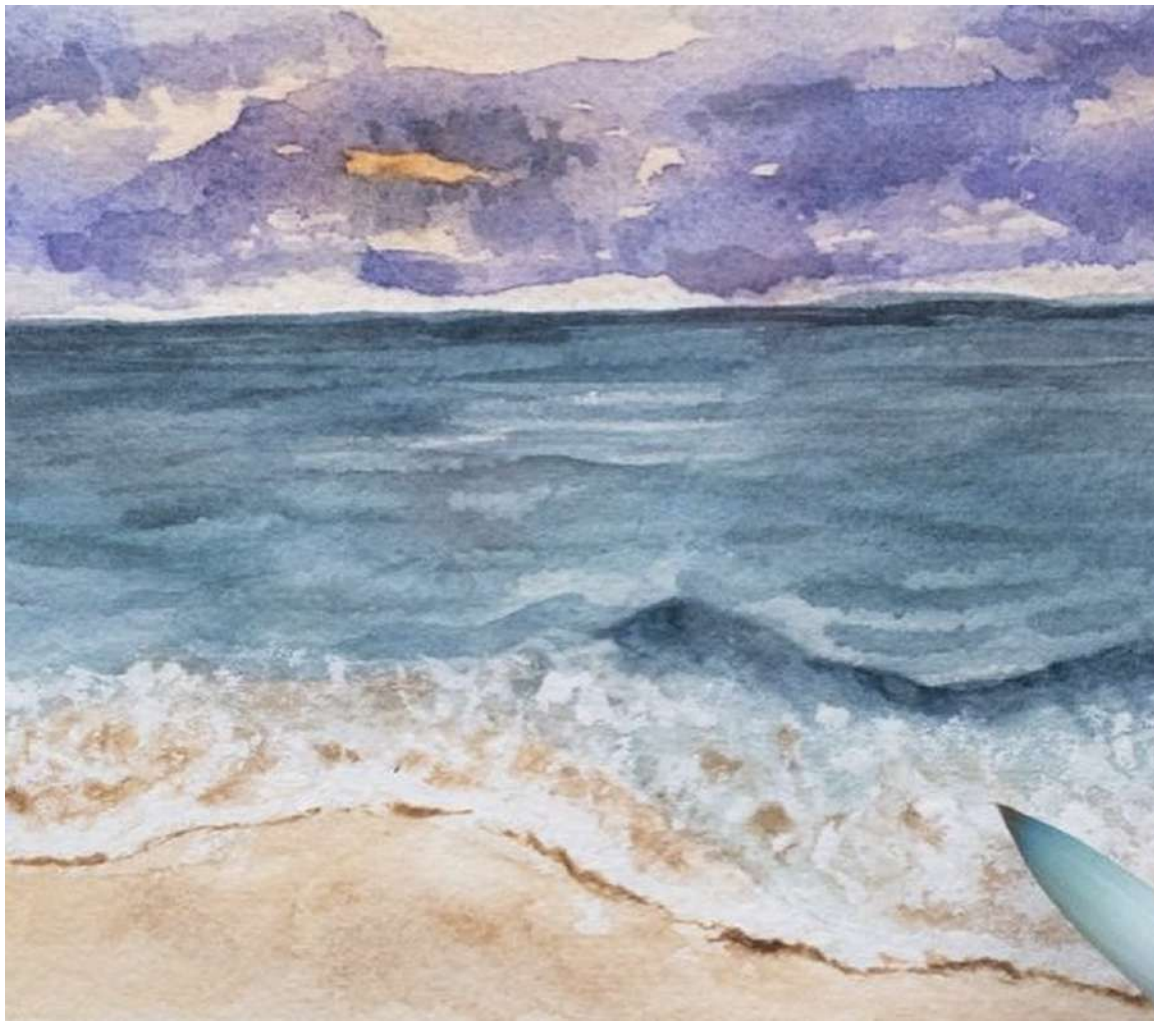
WATERCOLORS

PLASTIC WRAP

MIXING TRAYS

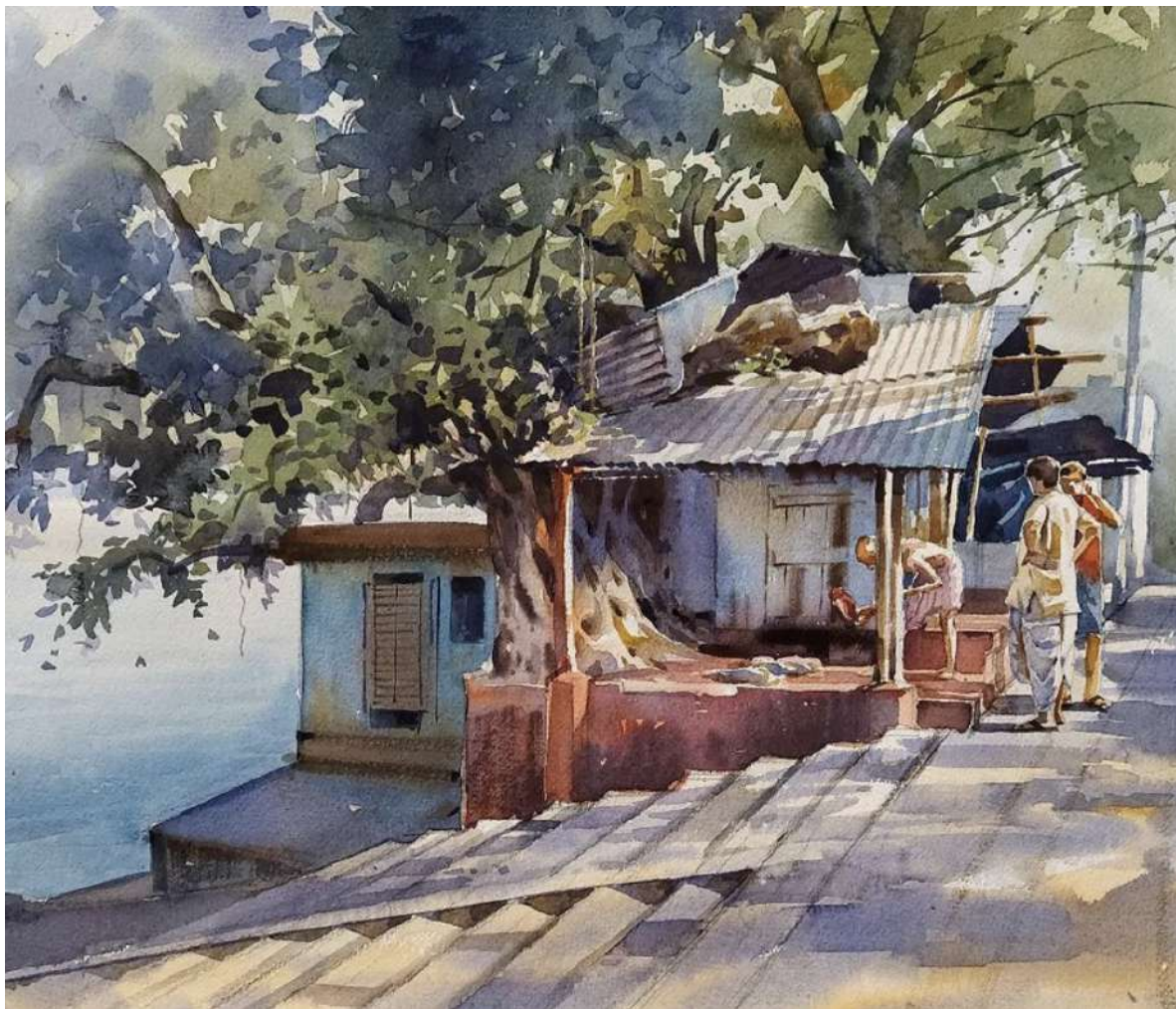
WATER CUPS





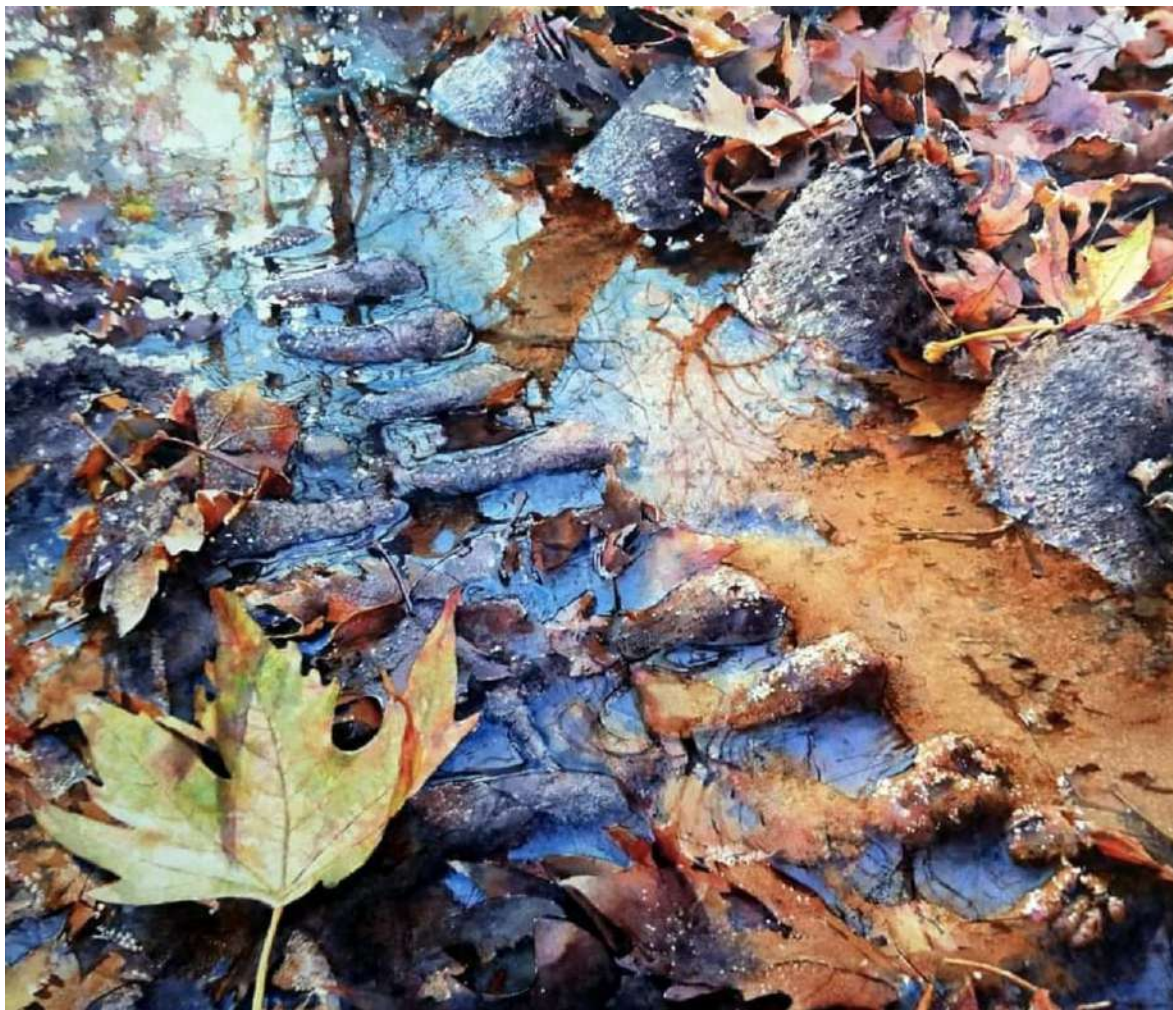
TERESA BUI

@TERESAB_ART



AVI DEY

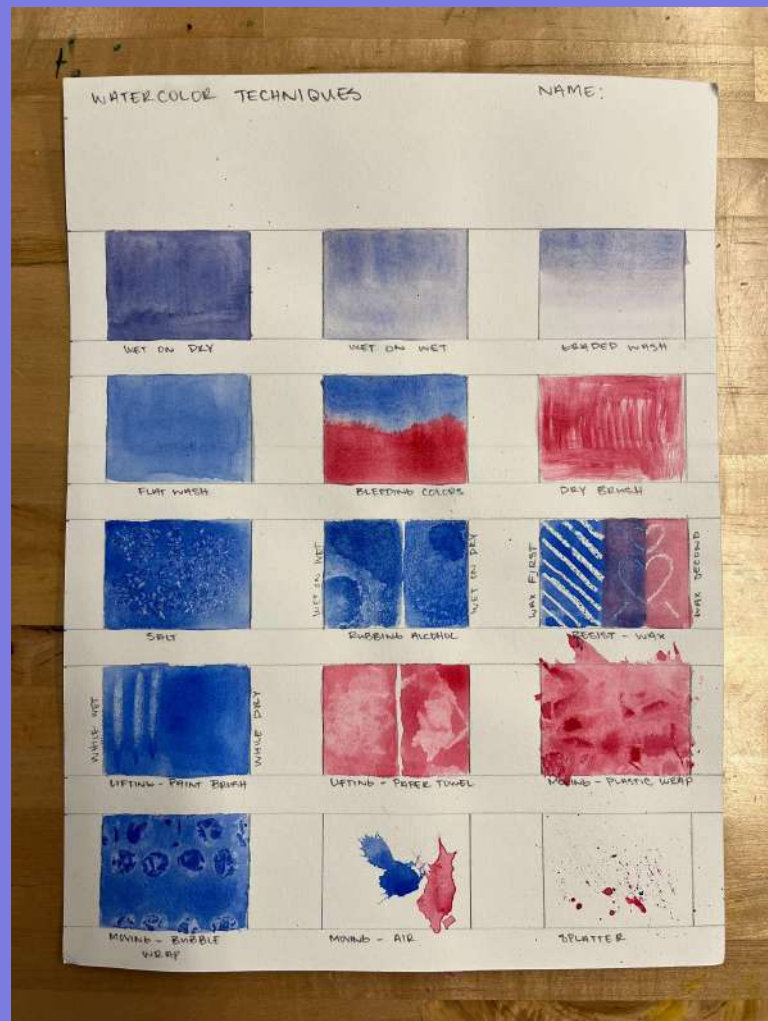
@AVYDEY_ARTS



RUKIYE GARIP

@RUKIYEGARIP

WATERCOLOR TECHNIQUES ASSIGNMENT



Criteria	Advanced (4)	Meeting (3)	Beginning (2)	Emerging (1)	Missing (0)
Wet on Dry	Technique was completed perfectly	Technique achieved, but with minor errors	Technique attempted, but needs improvement	Attempted, but cannot distinguish technique	Missing
Wet on Wet	“	“	“	“	“
Gradient Wash	“	“	“	“	“
Flat Wash	“	“	“	“	“
Bleeding Colors	“	“	“	“	“

Criteria	Advanced (4)	Meeting (3)	Beginning (2)	Emerging (1)	Missing (0)
1		3		1	
2	4	3			
3	4	3			
4	4		2		
5	4		2		

A - 4	90% - 100%	<div>Add you score: 14</div> <div>Divide number of criteria: 5</div> <div>Grade: 2.8</div>
B - 3	80% - 89%	
C - 2	70% - 79%	
D - 1	60% - 69%	
E - 0	50% - 59%	

WATERCOLOR TECHNIQUES TEMPLATE

WET ON DRY

Using the paintbrush pick up water and pigment and apply it to the paper.



WET ON WET

Using a paintbrush wet an area of paper with water, and then apply pigment



GRADED WASH

Using a paintbrush wet paper with water, then apply pigment on one side and use the brush to pull the pigment across the area





KIM JUNG A

@GUREUM2012



MARINA CHUGUNOVA

@CHUGUNOVA.MARINA



KAITLYN PAGE

@THEINNEROBSERVER

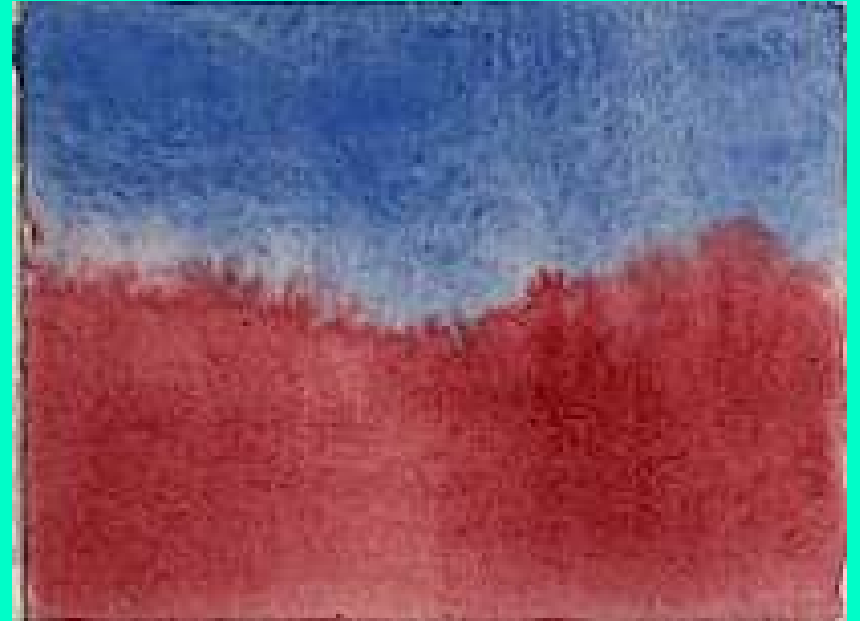
FLAT WASH

Using water and pigment
create a flat even area of
color



BLEEDING COLORS

Using the wet on wet technique apply two different pigments and let the colors bleed into each other



DRY BRUSH

Using a dry brush, pick up pigment and apply it to dry paper



SALT

Apply pigment to the paper,
then sprinkle it with salt



RUBBING ALCOHOL

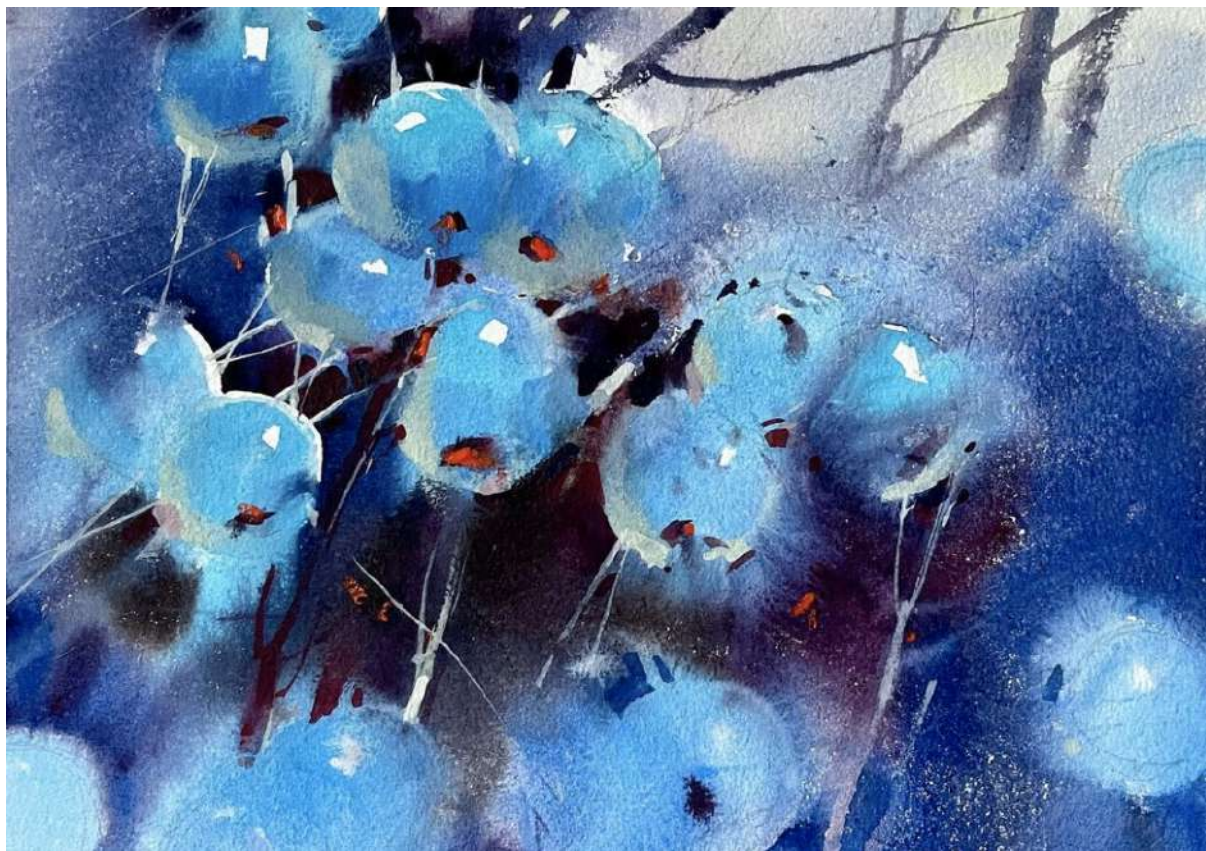
Apply pigment to paper, then
spray with rubbing alcohol



RESIST - WAX

Apply wax to paper, then
paint over the top of it





VIKTORIA PRISCHEDKO
@VIKTORIAPRISCHEDKO



PATRICIA MURIEL
@MURIEL_A.R.T



MONIKA MITKUTE

@MONIKAMITKUTEART

LIFTING - PAINTBRUSH

Apply pigment and water to paper, then using a dry brush lift the pigment off the paper



LIFTING - PAPER TOWEL

Apply pigment and water to paper, then use a dry crumpled paper towel to lift the pigment off the paper



MOVING - PLASTIC WRAP

Apply pigment and water to
paper, then apply crumpled
plastic wrap and allow to
dry



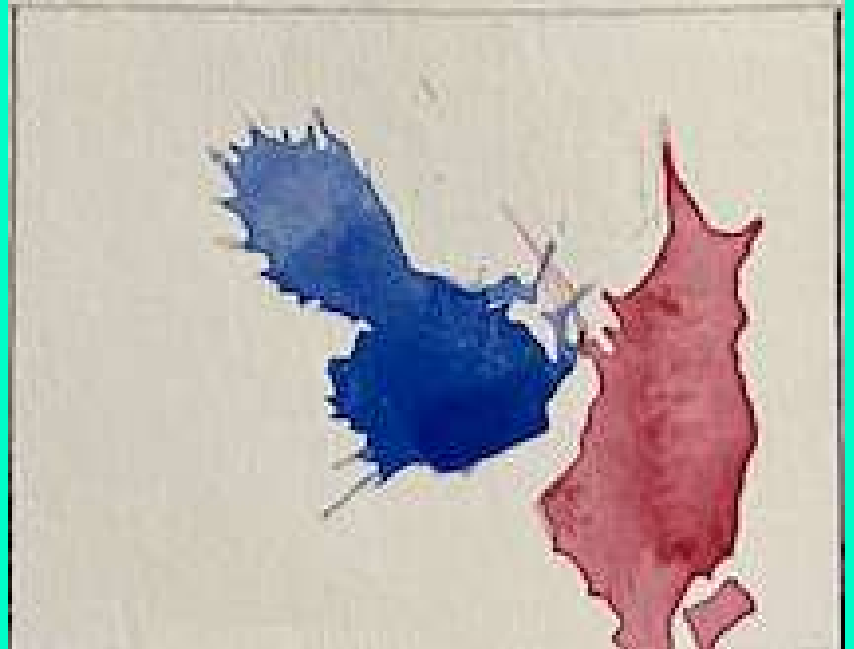
MOVING - BUBBLE WRAP

Apply pigment and water to
paper, then apply bubble
wrap and allow to dry



MOVING - AIR

Apply pigment and water to paper, then using the pipette blow the pigment across the paper



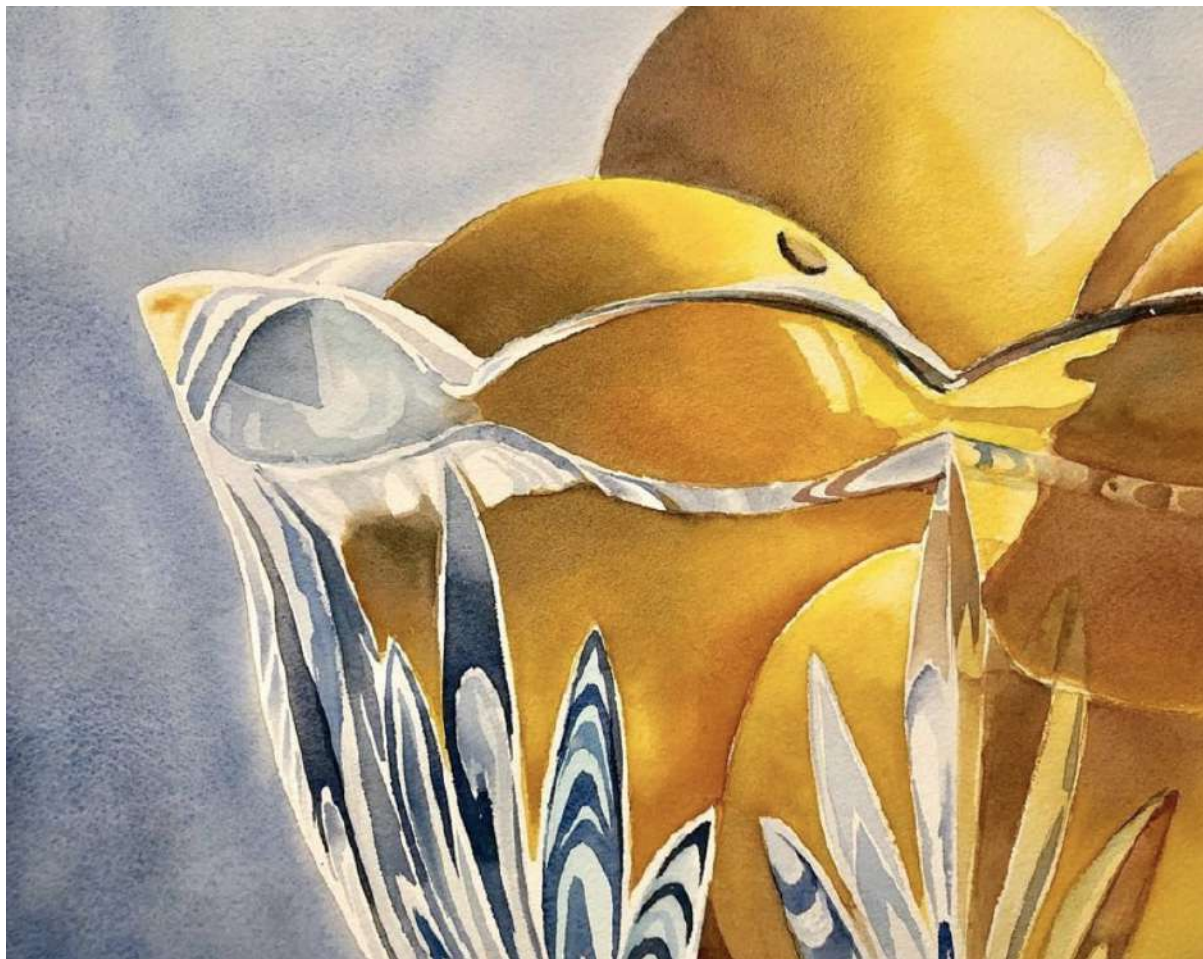
SPLATTER

Fill the paint brush with pigment and then flick the brush at the paper





JOLY
@JOLYPOA



SHELLEY PRIOR

@SHELLEYPRIORFINEART