

Name _____

Date _____

Period _____

Document Based Question (DBQ)

Immigration

Directions: This Question is based on the accompanying documents (1-6). Some of the documents have been edited for the purpose of the question. This question is designed to test your ability to work with historical documents. As you analyze the documents take into account both the **CONTEXT** of each document and the **POINT OF VIEW** that may be presented.

Historical Context:

The United States is a nation of immigrants. For a variety of reasons, groups of people from foreign lands left their native countries and relocated to the United States. Many of these immigrants faced a difficult and frightening experience at Ellis Island Immigration Station, and many hardships after they arrived in the United States.

This DBQ consists of **TWO** parts. The documents in Part A will help you answer the Part B Essay in which you will be asked to:

Task:

Using information from four documents and your knowledge of social studies, answer all the document questions in Part A and use the answers in your Part B Essay in which you will be asked to:

- ☐ Discuss reasons immigrants came to the United States.
- ☐ Discuss immigrants' experiences as they were processed at Ellis Island
- ☐ Discuss hardships/challenges faced by immigrants after they arrived in the United States.
- ☐

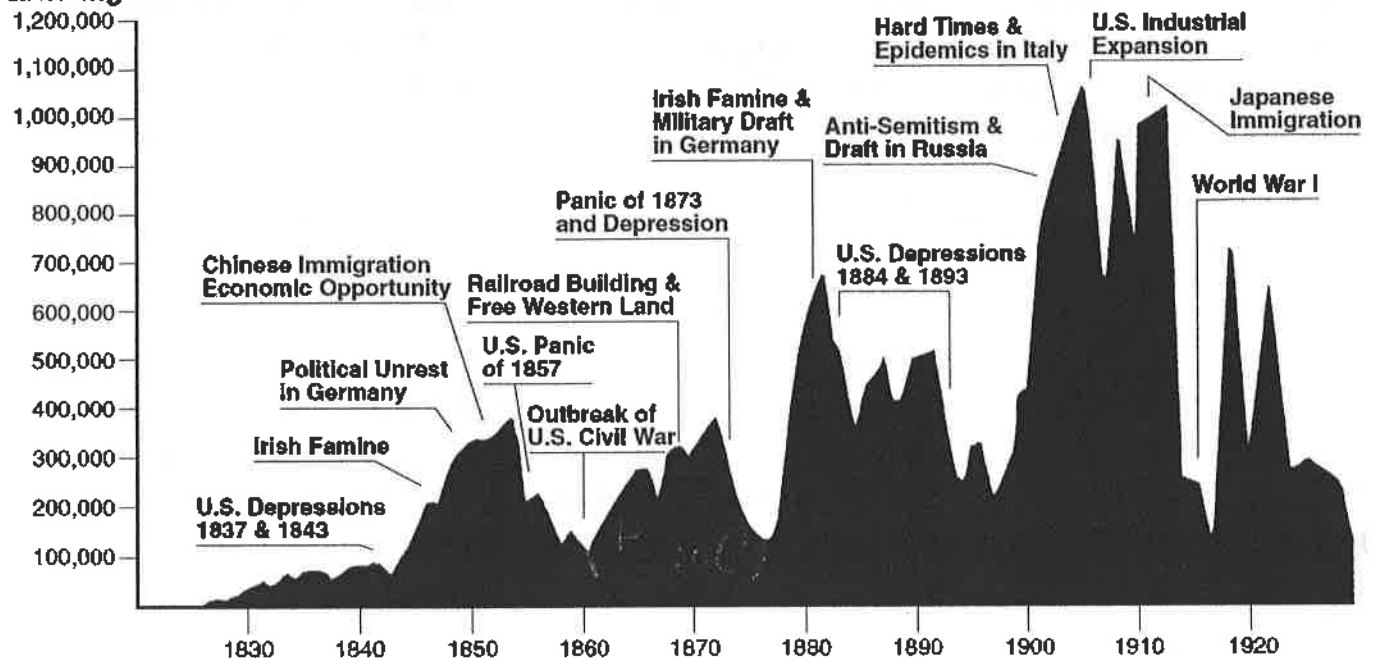
Part A

Short-Answer Questions

Directions: Analyze the documents and answer the short-answer questions that follow each document in the space provided.

Document 1

**Number of Immigrants
Entering U.S. Each Year**



1a Based on this graph, identify *two* conditions in their native countries that caused immigrants to come to the United States.

(1) _____

(2) _____

b Based on this graph, identify *one* situation in the United States that led to an increase of immigrants coming into the nation.

Document 2

This is part of an interview with George Kokkas, a Greek immigrant, who arrived in the United States in 1969.

... Work over there was very bad. In those days [1967], a worker in Greece made about five dollars a day, when a worker's pay in the United States was about thirty dollars a day. But the reason I came to the United States was because the situation in Greece was bad. And I was concerned about the education of my kids. Greece in those days had only one university, and if you had kids who wanted to go to the university it was very hard to get the chance.

Source: Gladys Nadler Rips, *Coming to America: Immigrants from Southern Europe*, Delacorte Press

2. Based on this document, identify *two* reasons that led this Greek immigrant to move to the United States.

(1) _____

(2) _____

Document 3



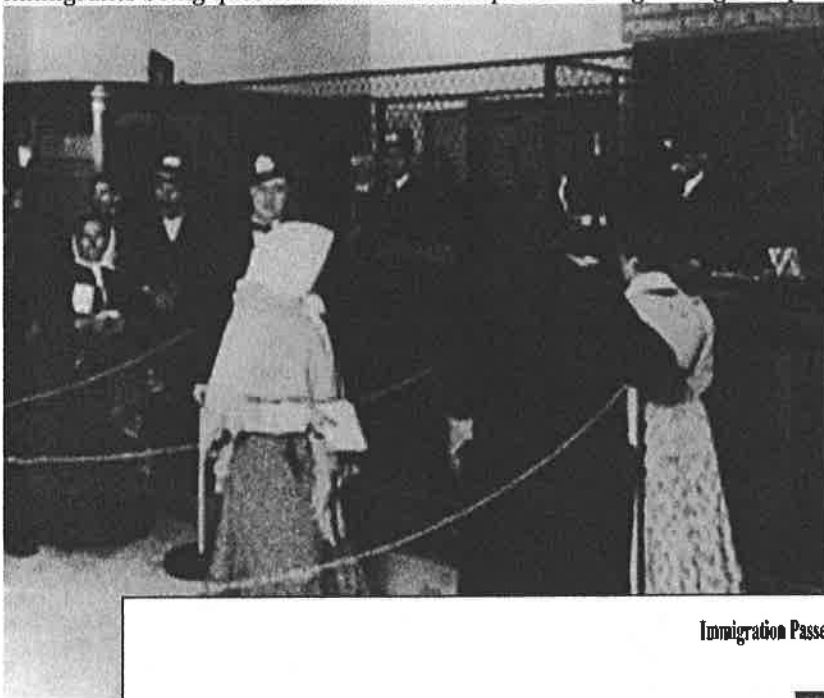
Medical Inspection at Ellis Island

3a. What is the Ellis Island official doing in this photograph?

b. Why is the official doing this?

Document 4

Immigrants being questioned with an interpreter during the legal inspection



Immigration Passenger List

LIST OF MANIFEST OF ALIEN PASSENGERS FOR THE UNITED STATES
 Required by the regulations of the Secretary of Commerce and Labor of the United States, under Act of Congress Approved February 20, 1907, to be delivered to the United States Immigration Officer at the Port of Arrival.

S.S. *Konstantin* sailing from *Rotterdam* *August 14, 1915*

Arriving at Port of *New York* *August 15, 1915*

No.	Name	Age	Sex	Married or Single	Occupation	Citizen of	Last Residence	Destination	Name and Address of Friend or Relative Going	Height	Hair Color	Eye Color	Birthplace
1	<i>Konstantin</i>	<i>35</i>	<i>M</i>	<i>Married</i>	<i>Shipyard</i>	<i>Russia</i>	<i>St. Petersburg</i>	<i>U.S.A.</i>	<i>John H. Brown</i>	<i>5' 8"</i>	<i>Dark</i>	<i>Blue</i>	<i>St. Petersburg</i>
2	<i>Anna</i>	<i>32</i>	<i>F</i>	<i>Married</i>	<i>Housewife</i>	<i>Russia</i>	<i>St. Petersburg</i>	<i>U.S.A.</i>	<i>John H. Brown</i>	<i>5' 6"</i>	<i>Dark</i>	<i>Blue</i>	<i>St. Petersburg</i>
3	<i>Grigory</i>	<i>28</i>	<i>M</i>	<i>Single</i>	<i>Shipyard</i>	<i>Russia</i>	<i>St. Petersburg</i>	<i>U.S.A.</i>	<i>John H. Brown</i>	<i>5' 10"</i>	<i>Dark</i>	<i>Blue</i>	<i>St. Petersburg</i>
4	<i>Anna</i>	<i>25</i>	<i>F</i>	<i>Single</i>	<i>Housewife</i>	<i>Russia</i>	<i>St. Petersburg</i>	<i>U.S.A.</i>	<i>John H. Brown</i>	<i>5' 4"</i>	<i>Dark</i>	<i>Blue</i>	<i>St. Petersburg</i>
5	<i>Grigory</i>	<i>22</i>	<i>M</i>	<i>Single</i>	<i>Shipyard</i>	<i>Russia</i>	<i>St. Petersburg</i>	<i>U.S.A.</i>	<i>John H. Brown</i>	<i>5' 8"</i>	<i>Dark</i>	<i>Blue</i>	<i>St. Petersburg</i>
6	<i>Anna</i>	<i>20</i>	<i>F</i>	<i>Single</i>	<i>Housewife</i>	<i>Russia</i>	<i>St. Petersburg</i>	<i>U.S.A.</i>	<i>John H. Brown</i>	<i>5' 6"</i>	<i>Dark</i>	<i>Blue</i>	<i>St. Petersburg</i>
7	<i>Grigory</i>	<i>18</i>	<i>M</i>	<i>Single</i>	<i>Shipyard</i>	<i>Russia</i>	<i>St. Petersburg</i>	<i>U.S.A.</i>	<i>John H. Brown</i>	<i>5' 10"</i>	<i>Dark</i>	<i>Blue</i>	<i>St. Petersburg</i>
8	<i>Anna</i>	<i>16</i>	<i>F</i>	<i>Single</i>	<i>Housewife</i>	<i>Russia</i>	<i>St. Petersburg</i>	<i>U.S.A.</i>	<i>John H. Brown</i>	<i>5' 4"</i>	<i>Dark</i>	<i>Blue</i>	<i>St. Petersburg</i>
9	<i>Grigory</i>	<i>14</i>	<i>M</i>	<i>Single</i>	<i>Shipyard</i>	<i>Russia</i>	<i>St. Petersburg</i>	<i>U.S.A.</i>	<i>John H. Brown</i>	<i>5' 8"</i>	<i>Dark</i>	<i>Blue</i>	<i>St. Petersburg</i>
10	<i>Anna</i>	<i>12</i>	<i>F</i>	<i>Single</i>	<i>Housewife</i>	<i>Russia</i>	<i>St. Petersburg</i>	<i>U.S.A.</i>	<i>John H. Brown</i>	<i>5' 6"</i>	<i>Dark</i>	<i>Blue</i>	<i>St. Petersburg</i>

4. Based on this document, what process did immigrants have to pass in order to gain admittance into the U.S.

Document 5



5. Based on this photograph, identify one reason that living in a tenement was often difficult for immigrants.

Document 6

This is part of a letter from a Polish immigrant, who came to the United States in 1913.

I'm in this country for four months.

I am a polish man. I want be american citizen . . . But my friends are polish people—I must live with them—I work in the shoes-shop with polish people—I stay all the time with them—at home—in the shop—anywhere.

I want live with american people, but I do not know anybody of american. I go 4 times to teacher, and must pay \$2 weekly. I wanted take board [to live] in english house, but I could not, for I earn only \$5 or 6 in a week, and when I pay teacher \$2, I have only \$4—\$3— and now english board house is too dear [expensive] for me. Better job to get is hard for me, because I do not speak well english and I cannot understand what they say to me. The teacher teach me—but when I come home—I must speak polish and in the shop also. In this way I can live in your country many years—like my friends—and never speak—write well english—and never be good american citizen. . . .

Source: Report of the Commission on Immigration on the Problem of Immigration in Massachusetts, 1914 (adapted)

6. Based on this document, state *two* reasons it was difficult for this Polish immigrant to fit into American society.

(1) _____

(2) _____

Part B:

Write a well-organized essay that includes an introduction, several paragraphs, and a conclusion. Use evidence from *at least four* documents in your essay. Support your response with relevant facts, examples, and details. Include additional outside information.

Historical Context:

The United States is a nation of immigrants. For a variety of reasons, groups of people from foreign lands left their native countries and relocated to the United States. Many of these immigrants faced a difficult and frightening experience at Ellis Island Immigration Station, and many hardships after they arrived in the United States.

Task:

Using the information from the documents and your knowledge of social studies, write an essay in which you

- ☐ Discuss reasons immigrants came to the United States.
- ☐ Discuss immigrants' experiences as they were processed at Ellis Island
- ☐ Discuss hardships/challenges faced by immigrants after they arrived in the United States.

Guidelines:

In your essay, be sure to:

- Develop all aspects of the task
- Incorporate information from *at least four* documents
- Incorporate relevant outside information
- Support the theme with relevant facts, examples, and details
- Use a logical and clear plan of organization, including an introduction and a conclusion that are beyond a restatement of the theme