

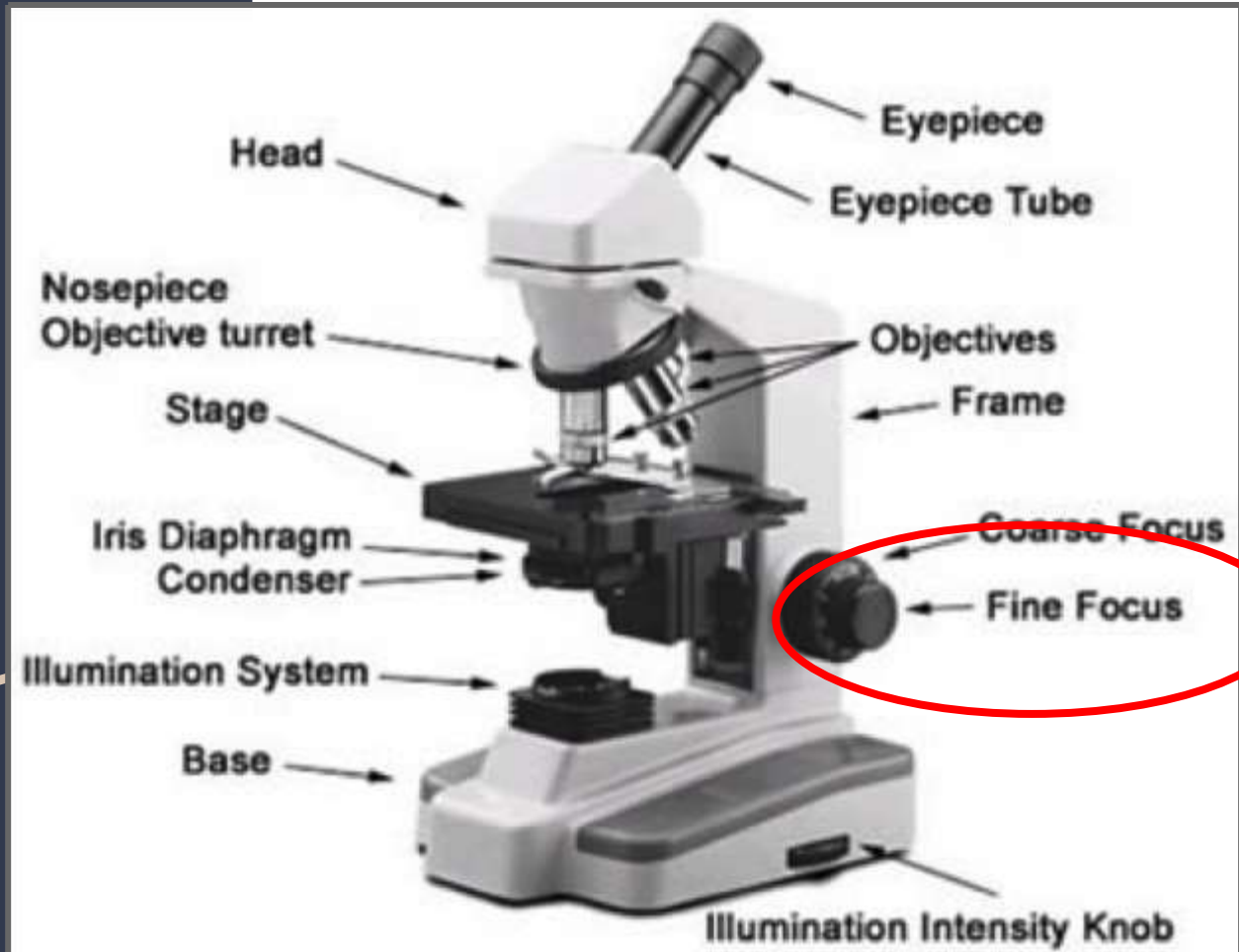
Unit V: Cells

Opening Activity: Plant or animal cell?

On your whiteboard...what are the main properties of life? Brainstorm with your group. NO NOTES!

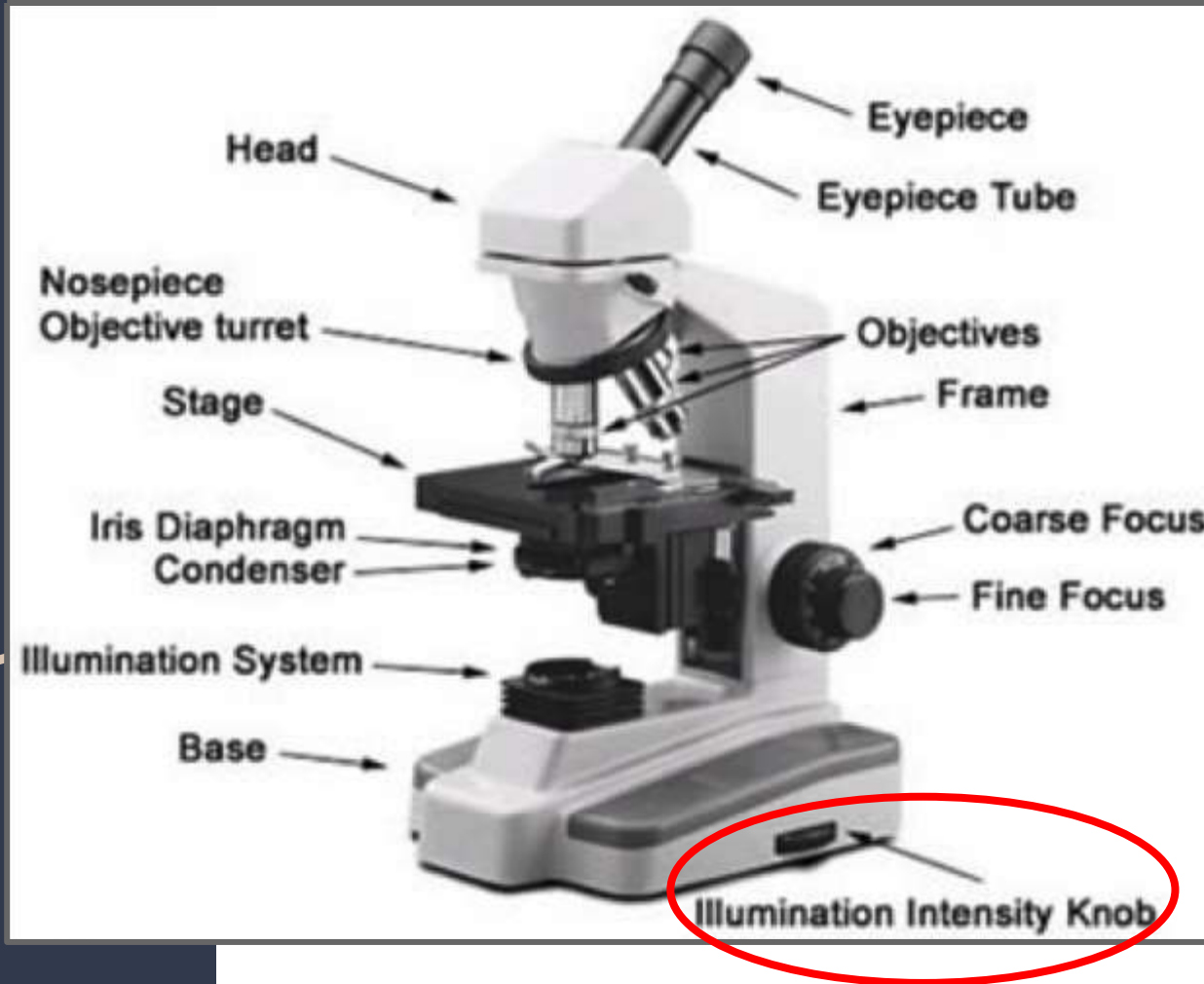
Your task:

1. Read background info & answer questions.
2. Find a microscope.
3. Follow directions on your lab sheet.
4. Adjust with fine focus only.

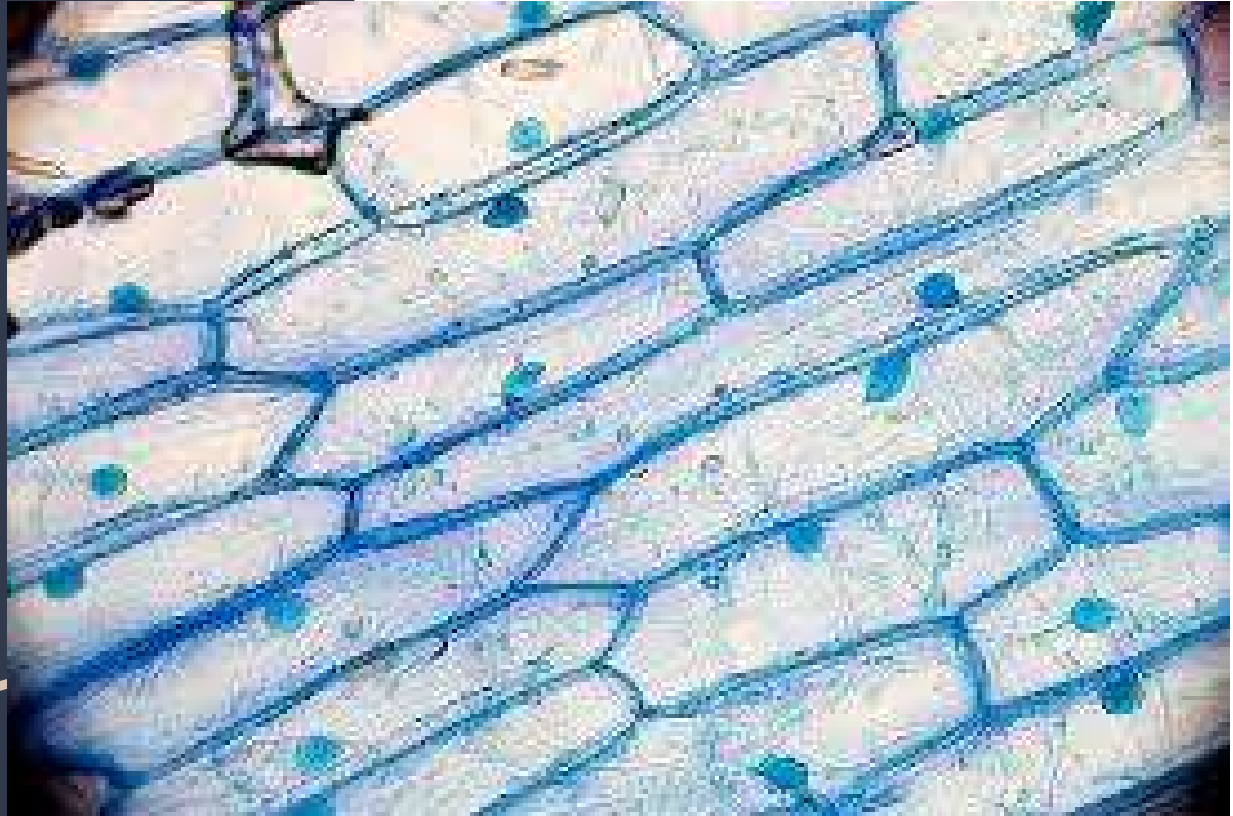


And then....

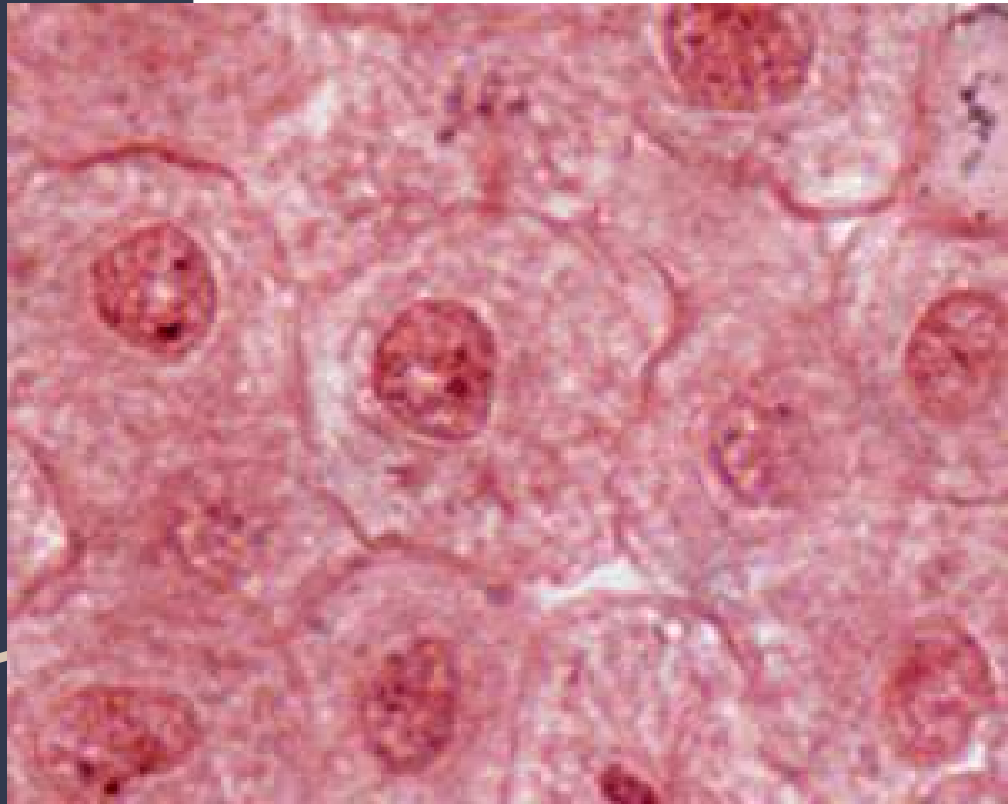
1. Take a photo of your mystery cell.
 - a. Make sure light intensity is at maximum.
2. Upload your photo to the Google Slides presentation in Moodle; complete the slide.



Plant cell



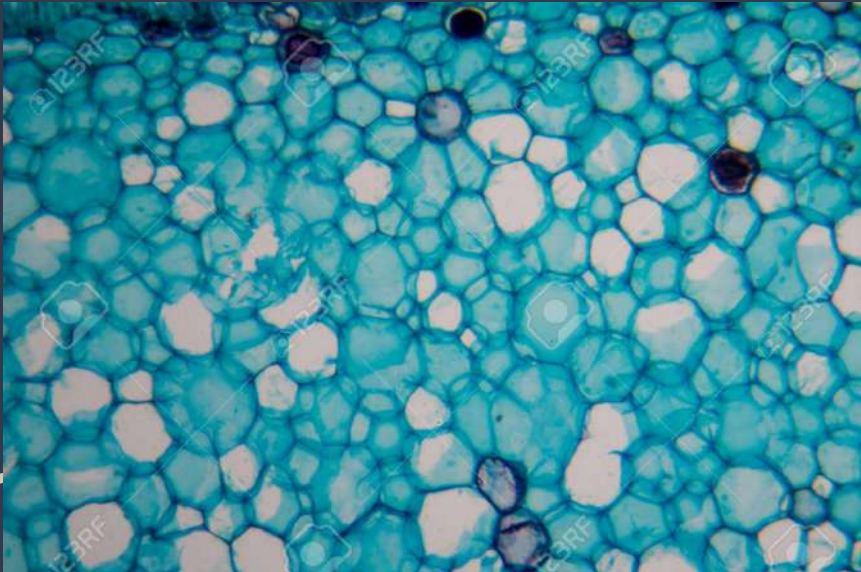
Animal cell



http://faculty.baruch.cuny.edu/jwahlert/bio1003/images/mitosis/whitefish_interphase.jpg

Mystery Cell : SAMPLE

Upload photo below.



We think this is a(n):

Plant or Animal cell

Because

Explain why here.

Mystery Cell A

Upload photo below.

We think this is a(n):

Because

Mystery Cell B

Upload photo below.

We think this is a(n):

Because

Mystery Cell C

Upload photo below.

We think this is a(n):

Because

Mystery Cell D

Upload photo below.

We think this is a(n):

Because

Mystery Cell E

Upload photo below.

We think this is a(n):

Because

Mystery Cell F

Upload photo below.

We think this is a(n):

Because

Mystery Cell G

Upload photo below.

We think this is a(n):

Because