

Online Access Code
A02670146P

Your Scores

Score

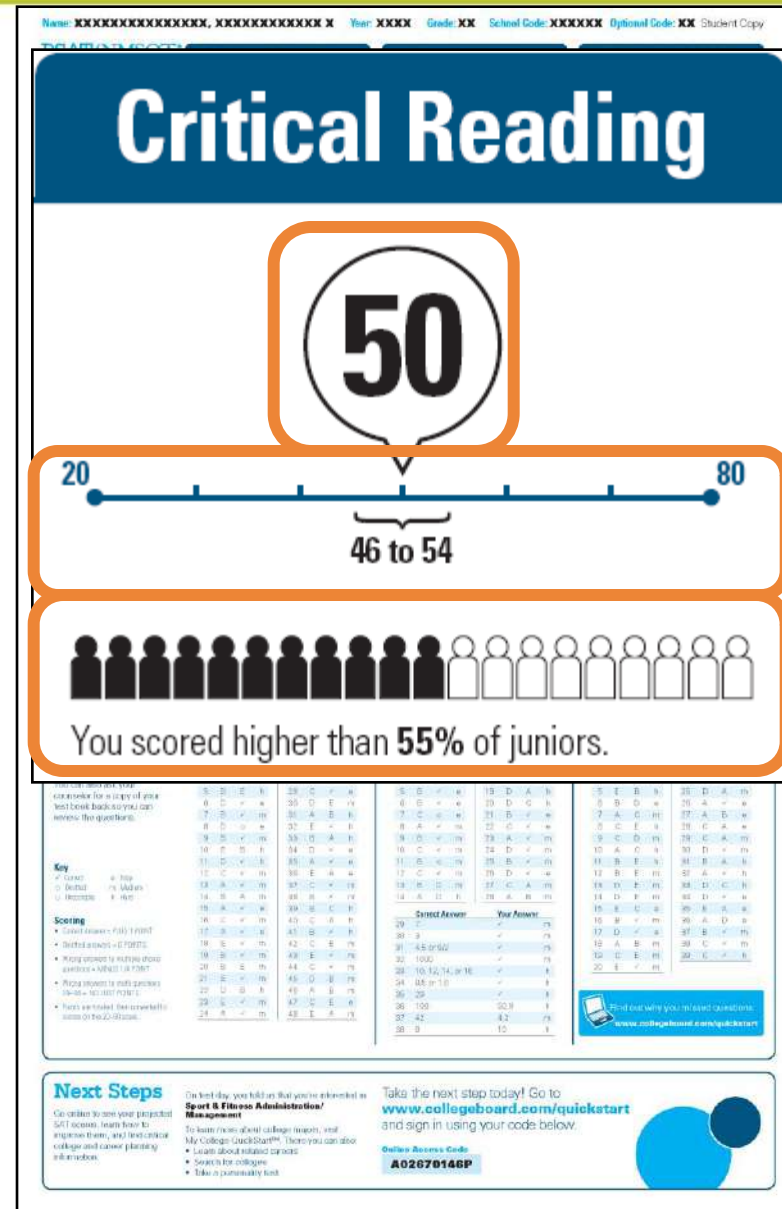
You can see your projected SAT score online in My College QuickStart (www.collegeboard.com/quickstart).

Score Range

Percentile

If you are a junior, your scores are compared to those of other juniors.

If you are a sophomore or younger student, your scores are compared to those of sophomores.



National Merit Scholarship Corporation Information

National Merit Scholarship Corporation

National Merit Scholarship Corporation (NMSC) uses a Selection Index based on PSAT/NMSQT® scores as an initial screen of over 1.5 million students who enter its scholarship programs. (See reverse for more information.)

Your Selection Index

Sum of scores in critical reading, mathematics and writing skills.

156

Percentile

Compares your performance with college-bound juniors.

47

Entry Requirements

(Information you provided on your answer sheet.)

High school student:

Yes

U.S. citizenship:

Yes

Year to complete high school and enroll full-time in college:

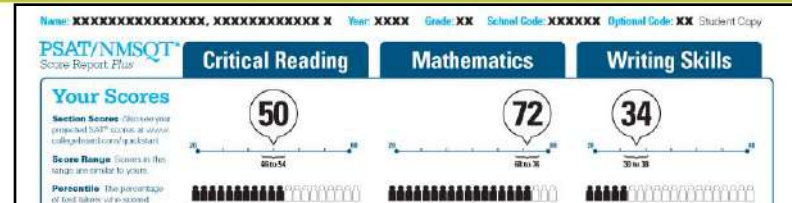
2011

Years to be spent in grades 9–12:

4

Eligibility Information

If your Selection Index places you among the 55,000 high scorers who qualify for program recognition, you will be notified next September.



The Selection Index is the sum of your critical reading, mathematics and writing skills scores.

If it has an asterisk, you do not meet all of the eligibility requirements for the competition.

The Percentile compares your performance to that of other college-bound juniors.

The Entry Requirements section displays information you provided on your answer sheet.

PSAT/NMSQT® Score Report Plus

6 of 8 questions correct (limited)

Get suggestions for improving your score by clicking on the question numbers in the table below.

Relationship of Sentences & Paragraphs

2 of 8 questions correct (limited)

Question	Correct Answer	Your Answer	Correct Answer	Your Answer		
1	C	A	19	D	m	
2	E	E	20	E	m	
3	E	E	21	A	C	h
4	C	E	22	E	h	
5	D	E	23	E	h	
6	B	E	24	D	A	h
7	C	E	25	D	C	h
8	A	E	26	B	E	h
9	D	E	27	A	C	h
10	C	E	28	A	C	h
11	B	E	29	B	E	h
12	C	E	30	B	E	h
13	B	E	31	C	A	h
14	A	E	32	C	A	h
15	A	E	33	A	B	m
16	B	E	34	A	B	m
17	D	E	35	A	B	m
18	B	E	36	A	B	m
19	D	E	37	A	B	m
20	E	E	38	A	B	m
21	A	C	39	A	B	m
22	E	E	40	A	B	m
23	E	E	41	A	B	m
24	D	A	42	A	B	m
25	D	C	43	A	B	m
26	B	E	44	A	B	m
27	A	C	45	A	B	m
28	A	C	46	A	B	m
29	B	E	47	A	B	m
30	B	E	48	A	B	m
31	C	A	49	A	B	m
32	C	A	50	A	B	m
33	A	B	51	A	B	m
34	A	B	52	A	B	m
35	A	B	53	A	B	m
36	A	B	54	A	B	m
37	A	B	55	A	B	m
38	A	B	56	A	B	m
39	A	B	57	A	B	m
40	A	B	58	A	B	m
41	A	B	59	A	B	m
42	A	B	60	A	B	m
43	A	B	61	A	B	m
44	A	B	62	A	B	m
45	A	B	63	A	B	m
46	A	B	64	A	B	m
47	A	B	65	A	B	m
48	A	B	66	A	B	m
49	A	B	67	A	B	m
50	A	B	68	A	B	m
51	A	B	69	A	B	m
52	A	B	70	A	B	m
53	A	B	71	A	B	m
54	A	B	72	A	B	m
55	A	B	73	A	B	m
56	A	B	74	A	B	m
57	A	B	75	A	B	m
58	A	B	76	A	B	m
59	A	B	77	A	B	m
60	A	B	78	A	B	m
61	A	B	79	A	B	m
62	A	B	80	A	B	m
63	A	B	81	A	B	m
64	A	B	82	A	B	m
65	A	B	83	A	B	m
66	A	B	84	A	B	m
67	A	B	85	A	B	m
68	A	B	86	A	B	m
69	A	B	87	A	B	m
70	A	B	88	A	B	m
71	A	B	89	A	B	m
72	A	B	90	A	B	m
73	A	B	91	A	B	m
74	A	B	92	A	B	m
75	A	B	93	A	B	m
76	A	B	94	A	B	m
77	A	B	95	A	B	m
78	A	B	96	A	B	m
79	A	B	97	A	B	m
80	A	B	98	A	B	m
81	A	B	99	A	B	m
82	A	B	100	A	B	m

Take the next step today! Go to www.collegeboard.com/quickstart and sign in using your code below.

PSAT/NMSQT® Score Report Plus

A02670146P

College and career planning information

Visit collegeboard.com for more information

- Learn about related careers
- Search for colleges
- Take a personality test

Your Skills

Your Skills

These skill categories can help you understand your score and focus your study efforts before you take the SAT.

To learn more about your skills and review suggestions for improvement based on your test performance, visit www.collegeboard.com/quickstart and sign in using your code below.

Online Access Code

A02670146P

Determining the Meaning of Words

9 of 15 questions correct (0 omitted)

Author's Craft: Style, Tone & Technique

3 of 5 questions correct (0 omitted)

Reasoning & Inference

8 of 10 questions correct (2 omitted)

Organization & Ideas

2 of 8 questions correct (2 omitted)

Understanding Literary Elements

4 of 10 questions correct (0 omitted)

Number & Operations

12 of 15 questions correct (1 omitted)

Algebra & Functions

5 of 5 questions correct (0 omitted)

Geometry & Measurement

8 of 10 questions correct (2 omitted)

Data, Statistics & Probability

6 of 8 questions correct (1 omitted)



Get suggestions for improving your skills before you take the SAT.
www.collegeboard.com/quickstart

Grammatical Relationships between Words

3 of 12 questions correct (1 omitted)

Words & Phrases Used to Modify or Compare

1 of 5 questions correct (2 omitted)

Phrases & Clauses

6 of 10 questions correct (2 omitted)

Correctly Formed Sentences

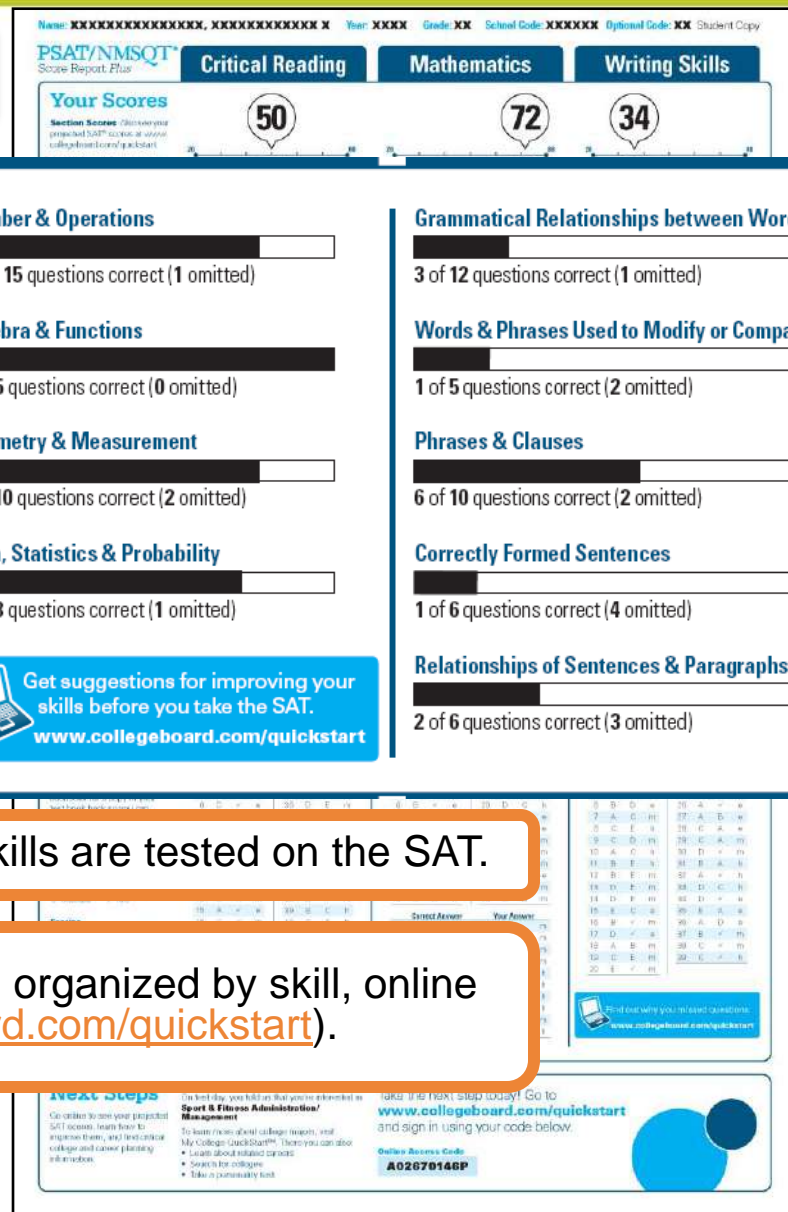
1 of 6 questions correct (4 omitted)

Relationships of Sentences & Paragraphs

2 of 6 questions correct (3 omitted)

See how you did on each skill. The same skills are tested on the SAT.

You can try hundreds of practice questions, organized by skill, online in My College QuickStart (www.collegeboard.com/quickstart).



Your Answers

You will get your test book back with your PSAT/NMSQT results, so that you can review the questions.

You can also review each test question in My College QuickStart.

Name: XXXXXXXXXXXXXXXXXX Year: XXXX Grade: XX School Code: XXXXXX Optional Code: XX Student Copy

PSAT/NMSQT™ Score Report Plus

Critical Reading

72 (20 to 36)

You scored higher than 82% of juniors.

34 (30 to 38)

You scored higher than 23% of juniors.

Eligibility Information
If your Question Index shows you taking the PSAT/NMSQT, you are eligible to receive a score report. If you are not, you will be notified next September.

Number & Operations
2 of 15 questions correct (1 omitted)

Algebra & Functions
1 of 5 questions correct (2 omitted)

Geometry & Measurement
1 of 10 questions correct (2 omitted)

Data, Statistics & Probability
1 of 10 questions correct (1 omitted)

Relationships between Words
3 of 12 questions correct (1 omitted)

Words & Phrases Used to Modify or Compare
1 of 5 questions correct (1 omitted)

Phrases & Clauses
6 of 10 questions correct (2 omitted)

Correctly Formed Sentences
1 of 5 questions correct (1 omitted)

Relationships of Sentences & Paragraphs
2 of 7 questions correct (3 omitted)

Get suggestions for improving your skills. Visit www.collegeboard.com/psat.

Question	Correct Answer	Your Answer	Difficulty
1	A	✓	e
2	B	✓	e
3	A	C	m
4	C	A	h
5	B	E	h
6	D	✓	e
7	B	✓	m
8	D	o	e
9	B	✓	m
10	E	B	h
11	D	✓	h
12	C	✓	m
13	A	✓	m
14	B	A	m
15	A	✓	e
16	C	✓	m
17	A	✓	e
18	E	✓	m
19	B	✓	m
20	B	E	m
21	E	✓	m
22	D	B	h
23	E	✓	m
24	A	✓	m

Key:
✓ correct
o incorrect

Scoring:
• Correct answers
• Deducted
• Wrong answers
• No answer
• Pencil marks
• Pencil marks
• Pencil marks

Next:
Go online to www.collegeboard.com/psat to review your answers and get more information.

Take the next step today! Go to www.collegeboard.com/quickstart and sign in using your code below.

PSAT/NMSQT™ Score Report Plus
A02670146P

Your Answers: Student-Produced Responses

Some of the math problems required you to grid in answers instead of selecting an option. For these questions, you will see the correct answer(s) written out.

Name: XXXXXXXXXXXXXXXX Year: XXXX Grade: XX School Code: XXXXXX Optional Code: XX Student Copy

PSAT/NMSQT™ Score Report Plus

Critical Reading	Mathematics	Writing Skills
Your Scores	50	72
Section Score (Show your projected SAT score at where college-bound students score)		34
Score Range (Scores in this range are similar to yours)	30 to 54	30 to 38
Percentile (The percentage of test takers who scored below your score)	You scored higher than 59% of peers	You scored higher than 82% of peers

National Merit Scholarship Corporation

Your Selection Index
156
Percentile: Compared to your performance on all dependent tests: 47

Entry Requirements
Information also provided on what answer sheet to use and when to take the test.

Eligibility Information
If your Selection Index is 156 or higher, you are eligible for the National Merit Scholarship Program. You will be notified next September.

Your Skills

Determining the Meaning of Words	Number & Operations	Grammatical Relationships between Words
9 of 15 questions correct (60%)	12 of 15 questions correct (80%)	3 of 12 questions correct (25%)
Author's Craft: Style, Tone & Technique	Algebra & Functions	Words & Phrases Used to Modify or Compare
3 of 5 questions correct (60%)	5 of 10 questions correct (50%)	1 of 3 questions correct (33%)

Online Access Code: A02670146P

	Correct Answer	Your Answer
29	7	✓ m
30	3	✓ m
31	4.5 or 9/2	✓ m
32	1000	✓ m
33	10, 12, 14, or 16	✓ h
34	8/5 or 1.6	✓ h
35	29	✓ h
36	108	50.9 h
37	42	4.2 m
38	8	10 h

Key
• Correct
• Incorrect

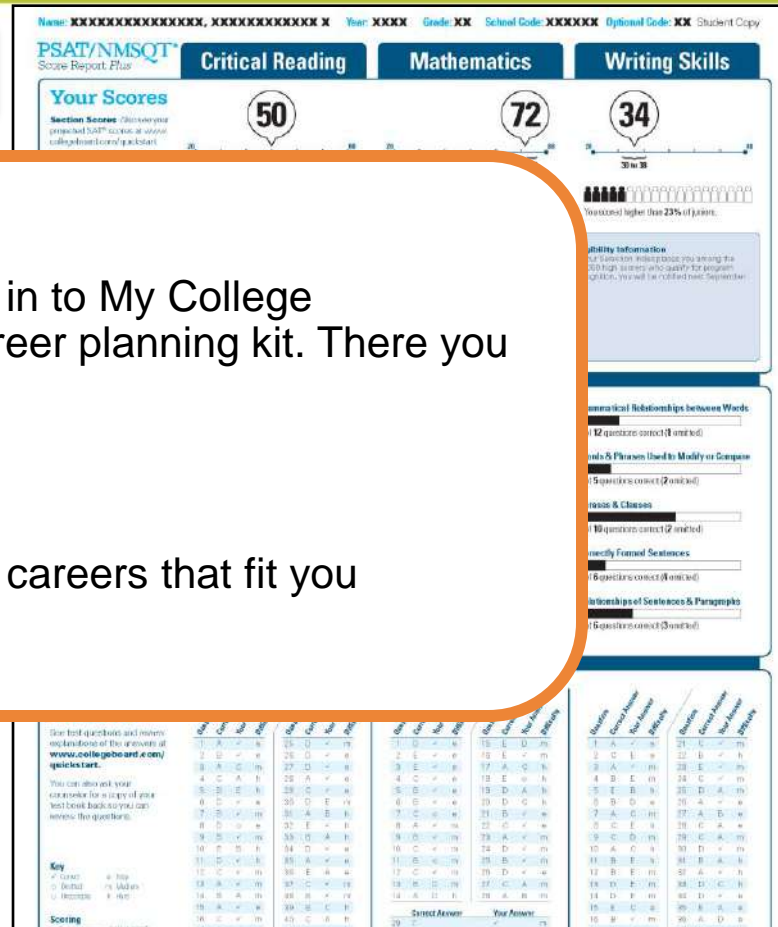
Scoring
• Correct answers: 100%
• Incorrect answers: 0%
• Wrong answers: 0%
• No answer: 0%
• Answer changed: 0%
• Answer not marked: 0%

Next Steps
Go online to view your projected SAT score, learn how to improve them, and find critical college and career planning information.

On test day, you felt as if you were in a race. So take a moment to relax and enjoy the day. Go to www.collegeboard.com/quickscore and sign in using your code below.

Online Access Code: A02670146P

Next Steps



What's next?

Use the access code on your report to log in to My College QuickStart, a personalized college and career planning kit. There you can:

- Search for colleges
- Get a personalized SAT study plan
- Take a personality test to find majors and careers that fit you

www.collegeboard.com/quickstart

Next Steps

Go online to see your projected SAT scores, learn how to improve them, and find critical college and career planning information.

On test day, you told us that you're interested in **Sport & Fitness Administration/Management**

To learn more about college majors, visit My College QuickStart™. There you can also:

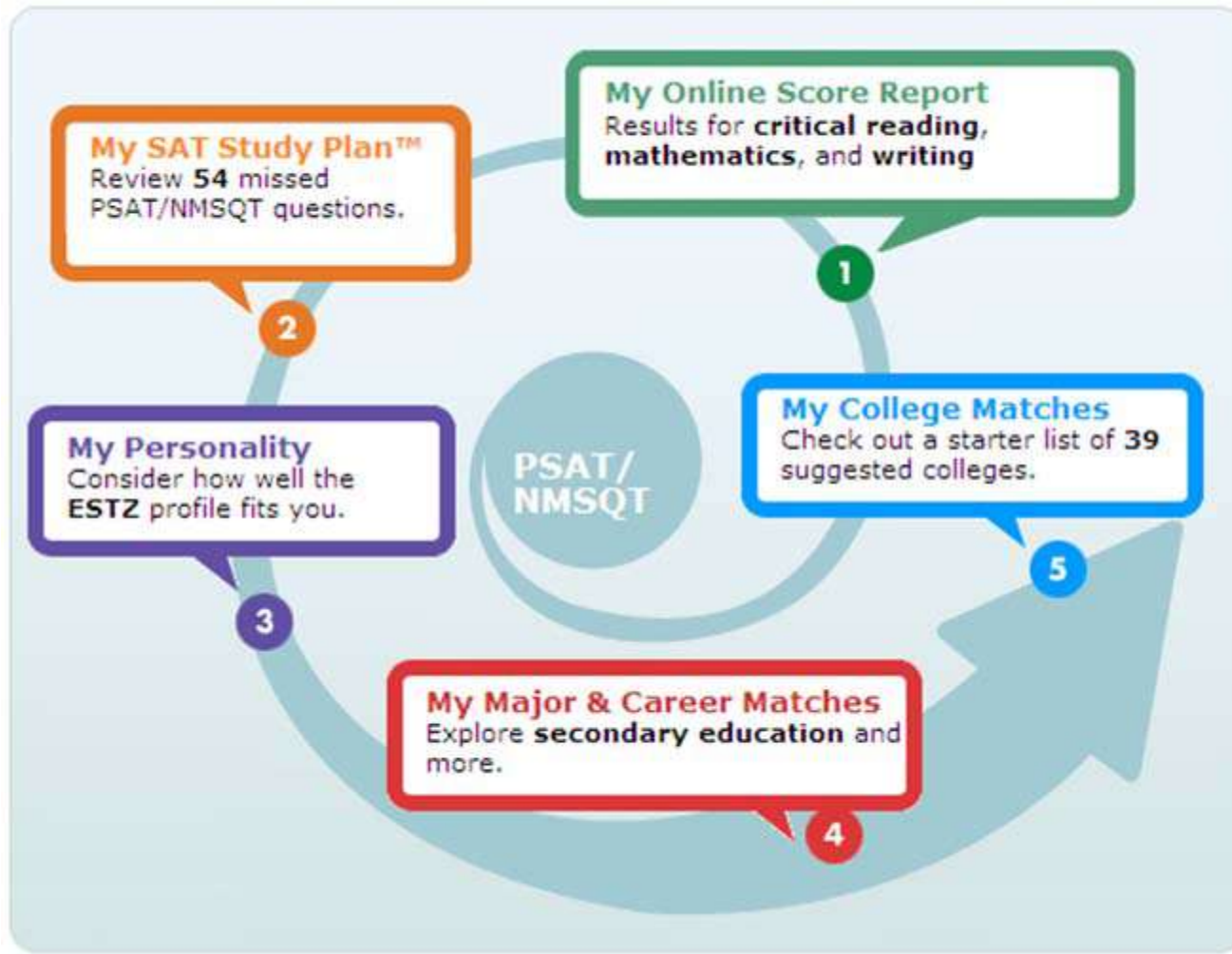
- Learn about related careers
- Search for colleges
- Take a personality test

Take the next step today! Go to www.collegeboard.com/quickstart and sign in using your code below.

Online Access Code

A02670146P

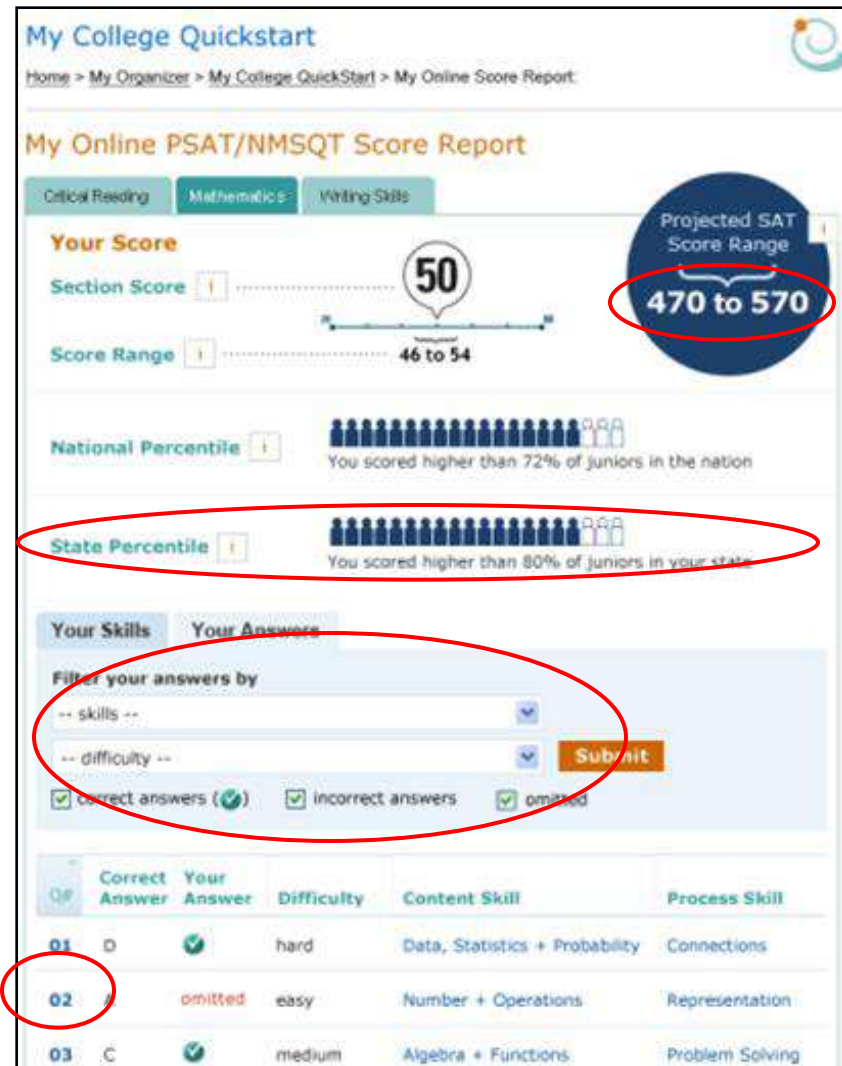
My College QuickStart



My College QuickStart

My Online Score Report

- Projected SAT® score ranges
- State percentiles
- You can filter questions
- Questions and answer explanations



My College QuickStart

My SAT Study Plan™

- Personalized skills to improve
- SAT practice questions
- An official SAT practice test

My College Quickstart

Home > My Organizer > My College QuickStart > My Online Score Report

My SAT Study Plan

Study Plan Home | Meet the SAT | Critical Reading | Mathematics | Writing | **Practice Test**

Review & Practice | My Skills Feedback | Get Test-Taking Advice

My Skills Feedback

This feedback was created especially for you, based on your PSAT/NMSQT results. Select a skill to see how you answered each question and review the answer explanations. To improve your score, focus on the skills where you need more work.

Content Skills

- Connections*
- Data, Statistics + Probability
- Reasoning***
- Number & Operations

Process Skills

- Problem Solving*
- Geometry & Measurement
- Communication*
- Algebra & Functions
- Representation

* These math-only process skill groups were not included on your Score Report Plus.

Skill Group: Reasoning (46 - 54)

3 of 8 correct (0 omitted)

definition	answers	#	questions
Short definition of skill goes here lorem ipsum sic amet dolor presti- ditation y one acetsi it kanama gorant possentesque.	Omitted	0	--
	Incorrect	5	01, 17, 23, 26, 37 (view all)
	Correct	3	07, 12, 14 (view all)

Includes: Logical Reasoning, Proofs, Counterexamples

[Practice Now](#)

My College QuickStart

INSIGHTS
I.D. ME
EXPLORE MAJORS
FIND A COLLEGE
RESEARCH CAREERS

I.D. ME

Introduction
QuickStarts
ORA Personality Profiler®
View My Profile

THE TROUBLESHOOTERS
ISTA ISFA
ESTA ESFA
THE TRADITIONALISTS
ESTZ ESFZ
ISTZ ISFZ
THE CATALYSTS
INFA ENFA
ENFZ INFZ

The Traditionalists

introverting feeling
sensing organizing

► **ISFZ The Provider**

ISFZs are responsible, caring, reserved, and cooperative. As an ISFZ you have a modest style of helping others in orderly and practical ways. You believe it is important to follow rules and laws; similarly, you adhere to routine and prefer to see traditions preserved with little change. You are prone to worry about things beyond your control and may appear to be less confident because of your tendency to become stressed or agitated and not ask for help.

About 6% of MyRoad participants

You like to be with a few close friends and family members and to offer personal support wherever and whenever needed. You are good at coordinating tasks and activities for everyone but may become overburdened by taking on other people's problems. Likewise, you don't ask for the recognition you would like to have. You are quietly loyal to family, friends, and groups and institutions that are important to you, and you hope others will be as loyal in return. You avoid interpersonal conflict at all costs.

As an ISFZ you are an organized and focused learner who is good at memorizing facts and details related to people. You reliably meet deadlines and obligations. You excel at coordinating and scheduling your own activities and keep yourself and your belongings neat and in good order. You prefer to work on projects and tasks that are useful in a practical way.

► **Your Strengths Include...**

- A practical and dependable nature.

My College QuickStart

My College Matches

- Starter list of colleges
- Criteria to customize search
- Ability to save searches

City University of New York: Hunter College
New York, New York
College Board code: 2301

[Add to List](#)
[Compare](#)
[Find Similar](#)
[Map It](#)
[Print Full Profile](#)
[Send to a Friend](#)

▼ At a Glance	► Admission	► Cost & Financial Aid	► Academics & Support	► Sports
► Deadlines	► SAT®, AP®, CLEP®	► Majors	► Housing & Campus Life	► International Students

Main Address
695 Park Avenue
New York, NY 10065
(212) 772-4000
www.hunter.cuny.edu

Admission Office
695 Park Avenue
New York, NY 10065
(212) 772-4490
admissions@hunter.cuny.edu
Contact: William Zlata
Director of Admissions

Type of School
Public
Liberal Arts College
Four-year
Coed
Percent applicants admitted: 28%
Regionally Accredited
Middle States Association of Colleges and Schools
College Board member

Calendar: Semester
Degrees offered:

- Bachelor's
- Master's

Setting
Urban setting
Very large city (over 500,000)
Commuter campus

Size
Total undergrads: 15,698
First-time degree-seeking freshmen: 2,042
Degree-seeking undergrads: 14,709
Graduate enrollment: 5,560

My College QuickStart

INSIGHTS

I.D. ME

EXPLORE MAJORS

FIND A COLLEGE

RESEARCH CAREERS

CIVIL ENGINEERING

Overview | High School Courses | College Courses | Career Connection | Perspectives

Majors A-Z

My Interest ?

High

Medium

None

Updated: 8-31-2009

Topics


Construction Engineering & Management

Environmental Engineering

Geological Engineering

Geotechnical Engineering

Mining Engineering



Overview


The ancient Egyptians built pyramids and levees. The Romans built aqueducts and the Colosseum. The Persians and ancient Greeks undertook massive building projects. Civil engineering has been practiced for thousands of years.

Civil engineers plan, design, build, and repair just about anything you can think of. That includes buildings, bridges, dams, tunnels, highways, stadiums, sewage treatment plants, power plants, airports, and even satellites. These days they're also in demand to repair the damage caused by natural disasters such as earthquakes, hurricanes, and floods. And our crumbling public structures, from bridges to tunnels, all need civil engineers to repair them.

Civil engineers plan, design, build, and repair just about anything you can think of.

Civil engineers specialize in different areas. Transportation engineers, for example, tackle problems like traffic jams and air travel safety. Water resources engineers work to control the flow of rivers and ensure clean drinking water.

As a civil engineering major, you'll take classes in several fields before focusing on one. But you'll find there's overlap in some course work. For instance, you'll learn how to build structures that can stand up to earthquakes in both geotechnical and structural engineering. In a geotechnical engineering course, you'll focus on soil structure and foundation design. But when you study structural engineering, you'll be more concerned with designing



My College QuickStart

Log in to your personalized account at

www.collegeboard.com/quickstart