

Earthquakes

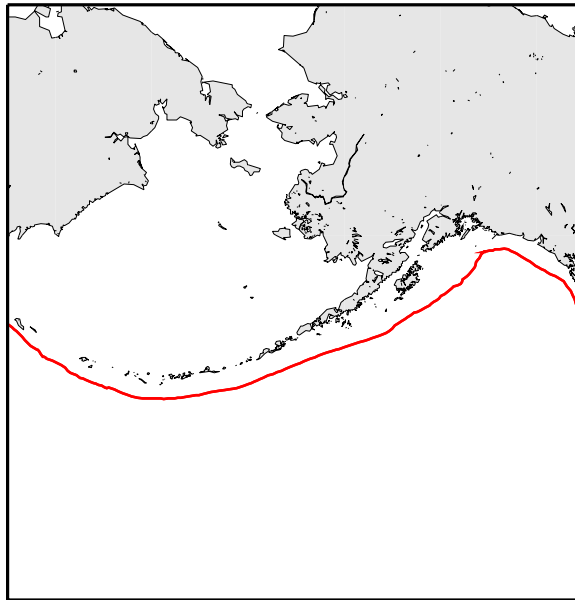
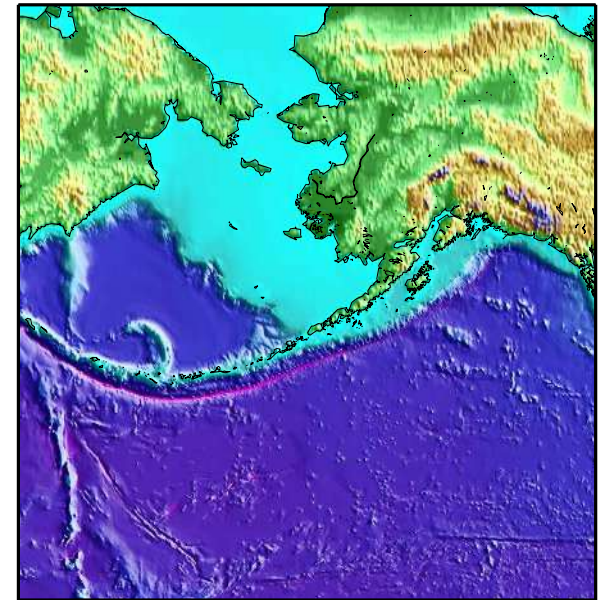
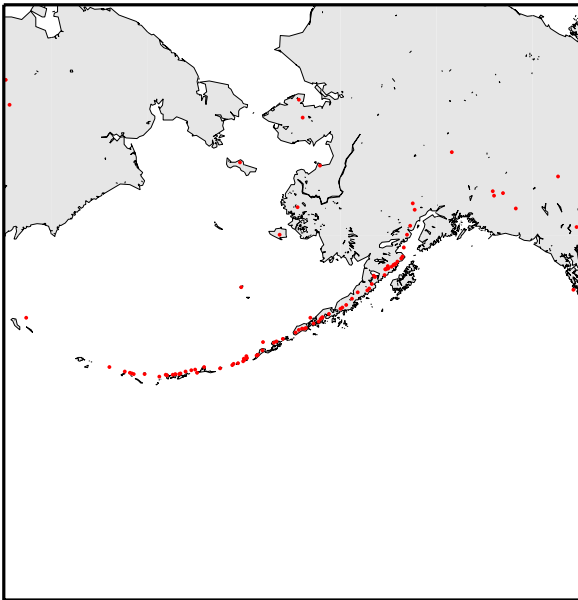


Plate Boundaries

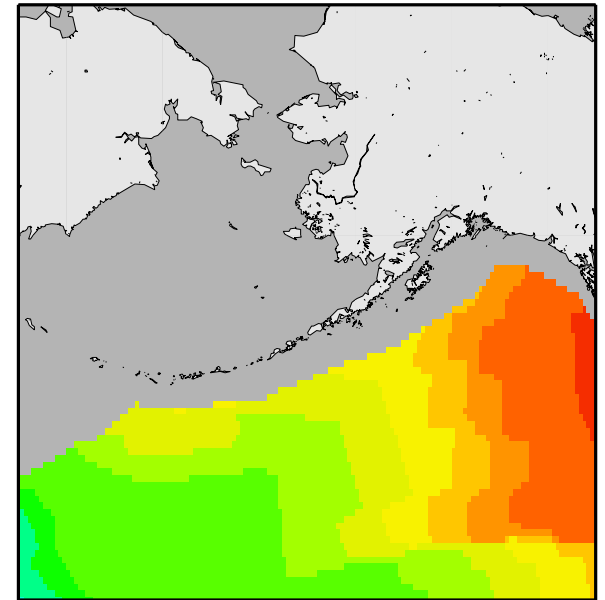


Topography

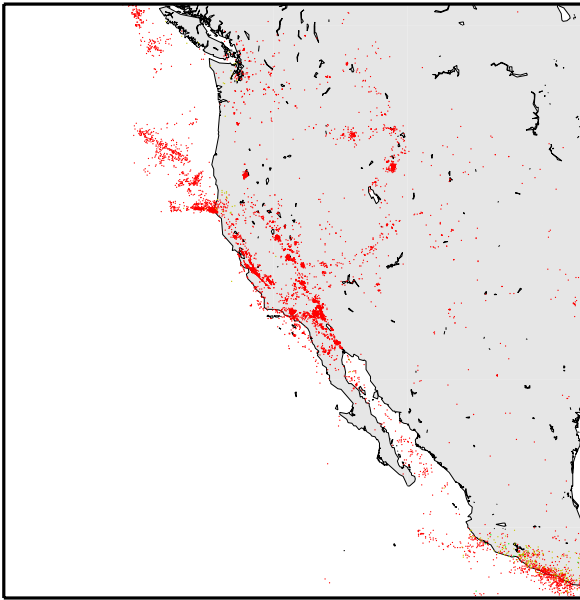


Volcanoes

Convergent Plate Boundary Aleutian Arc



Seafloor Age



Earthquakes

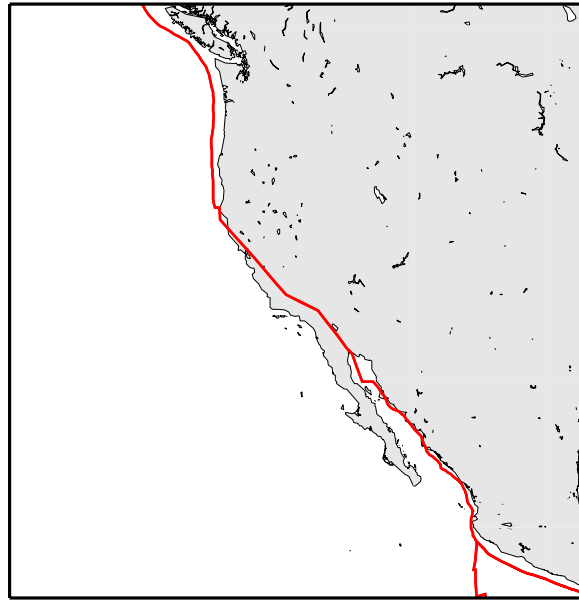
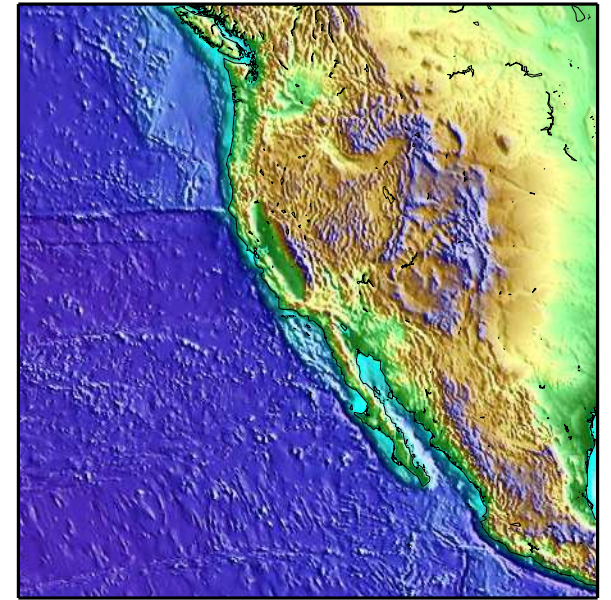
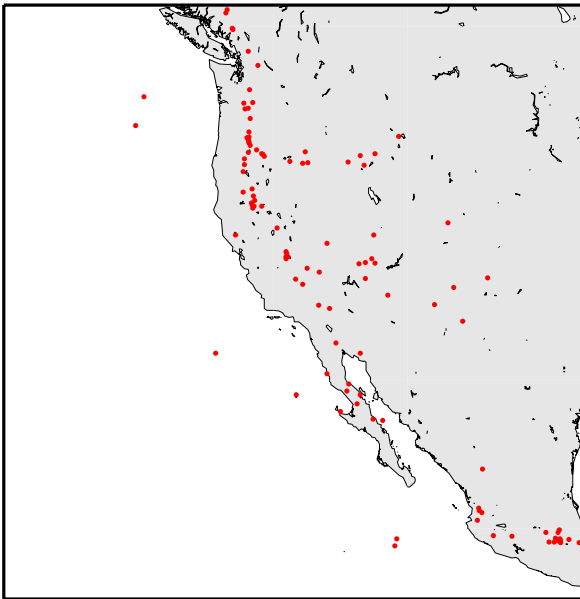


Plate Boundaries

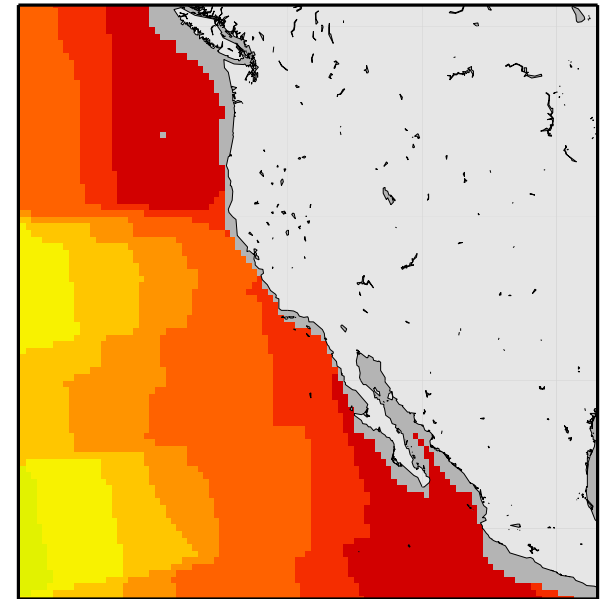


Topography

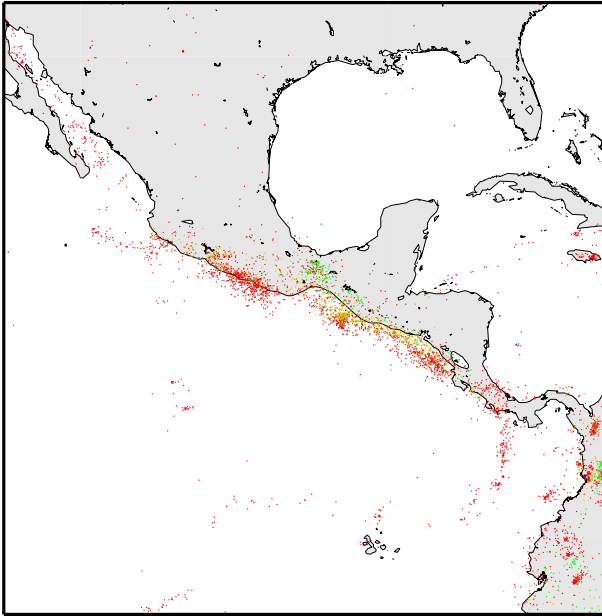


Volcanoes

Transform Plate Boundary Western North America



Seafloor Age



Earthquakes

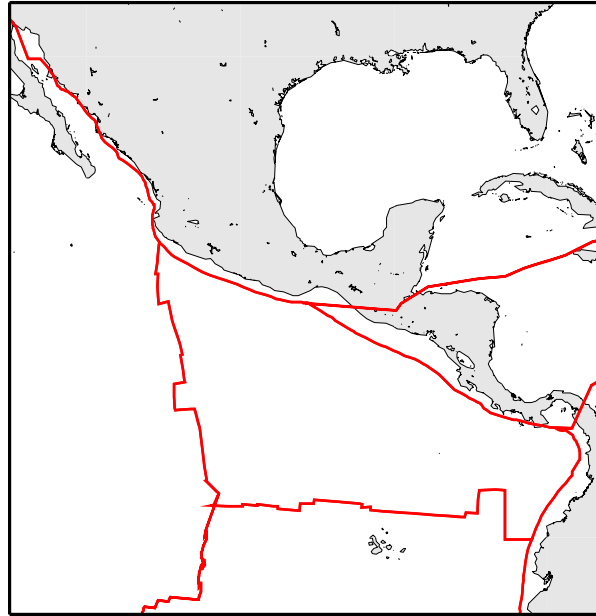
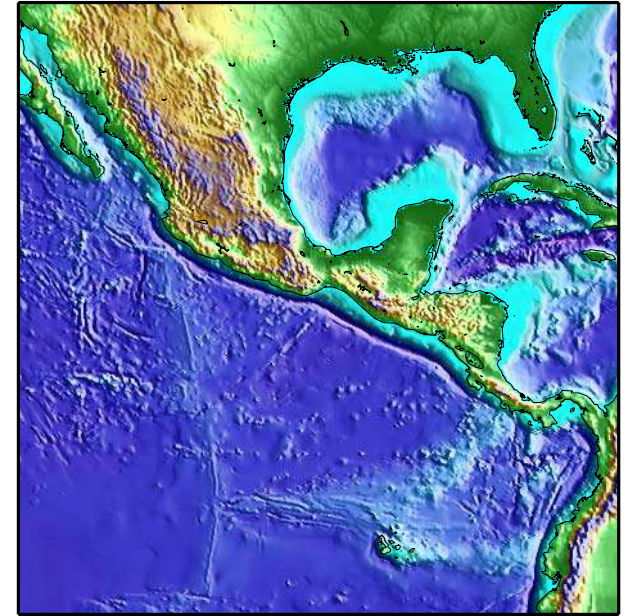
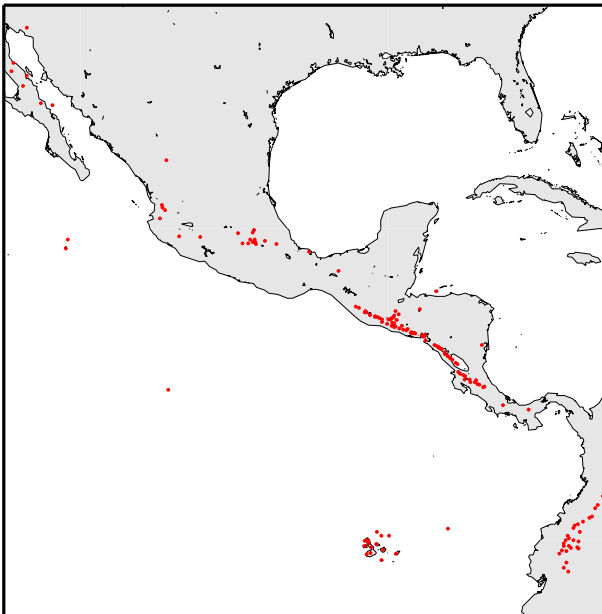


Plate Boundaries



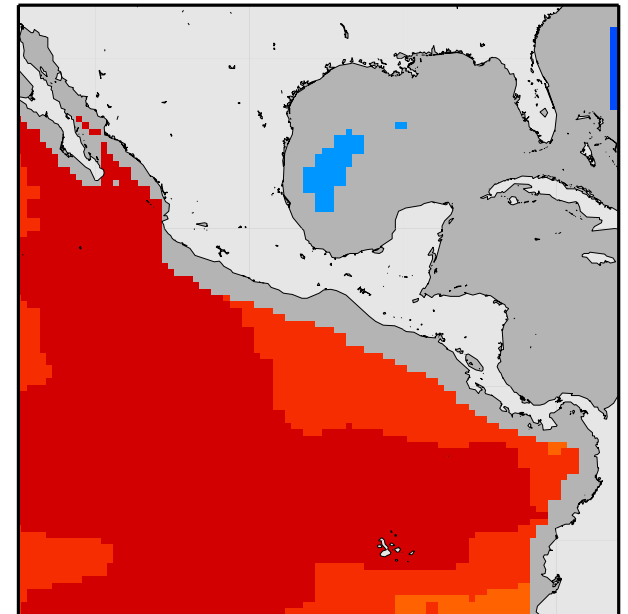
Topography



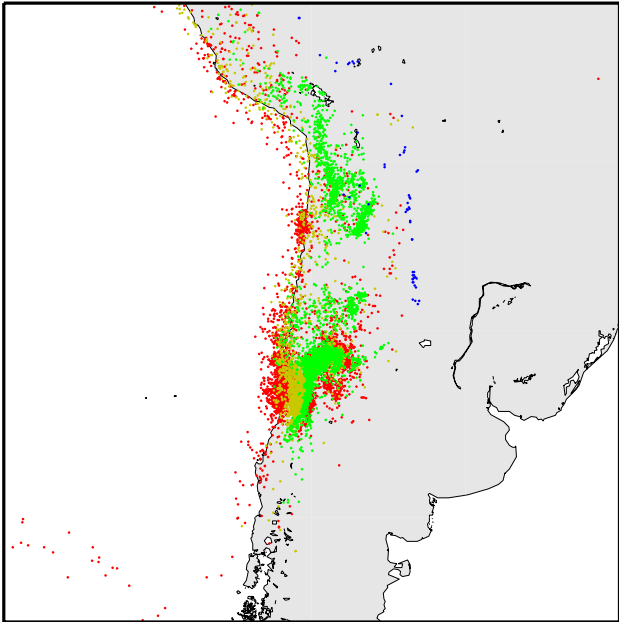
Volcanoes

**Convergent Plate Boundary
Central America**

**Divergent Plate Boundary
Western Pacific**



Seafloor Age



Earthquakes

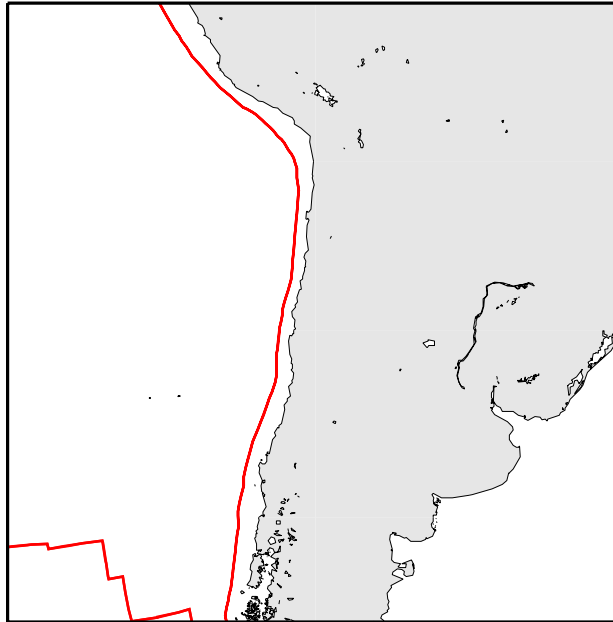
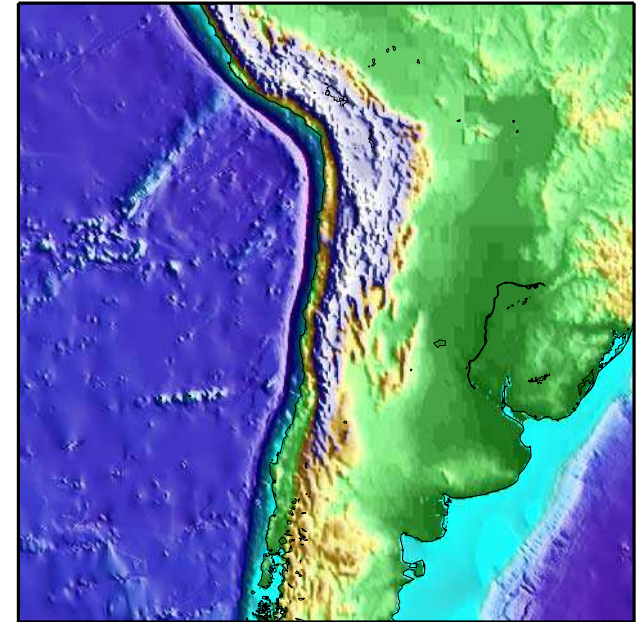
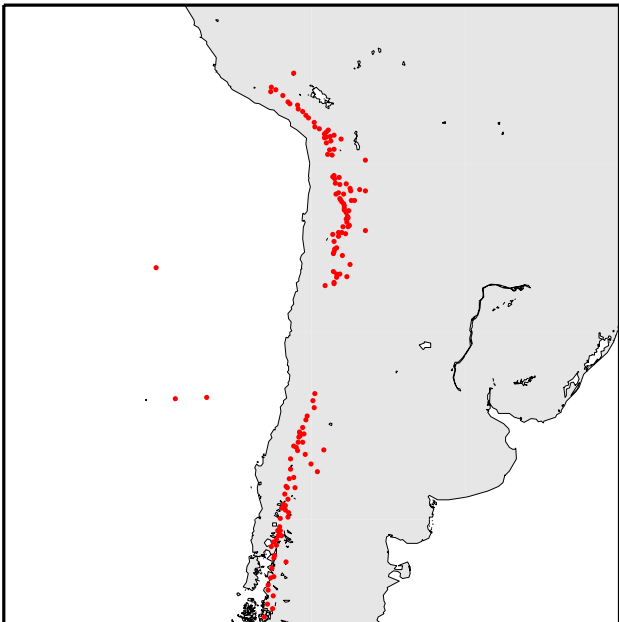


Plate Boundaries

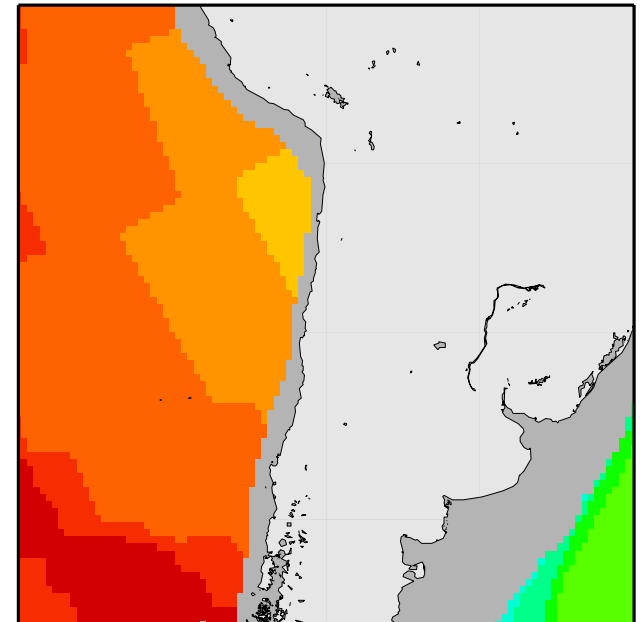


Topography

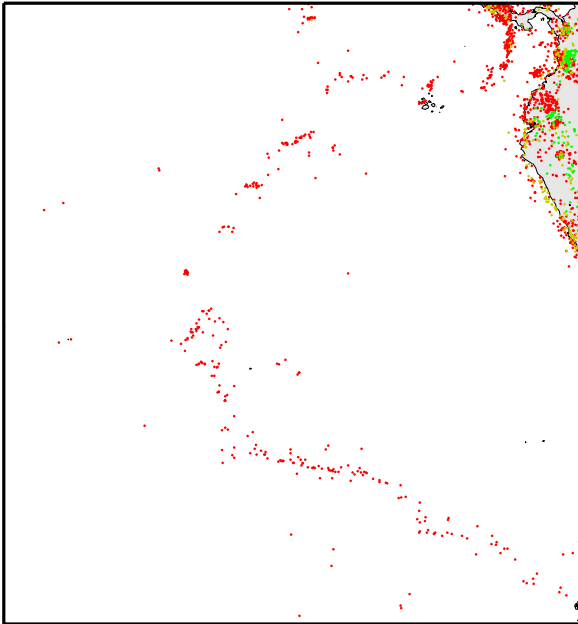


Volcanoes

Convergent Plate Boundary Chile



Seafloor Age



Earthquakes

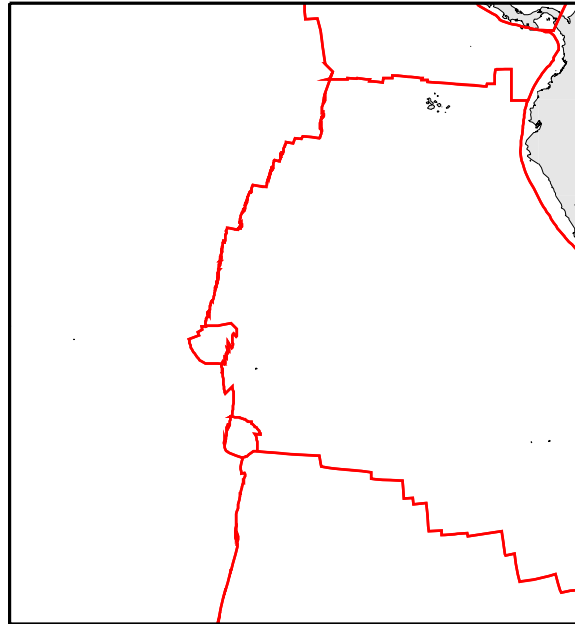
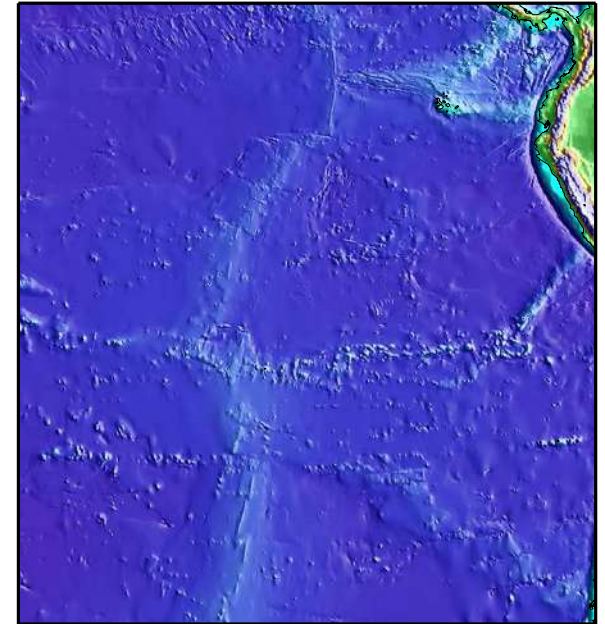
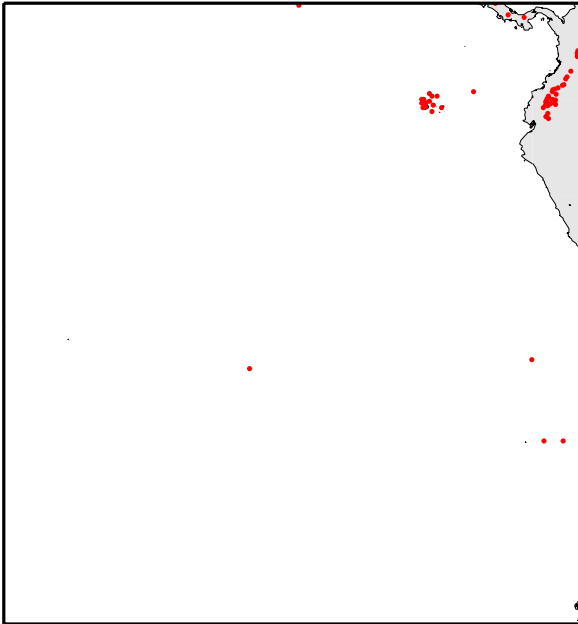


Plate Boundaries

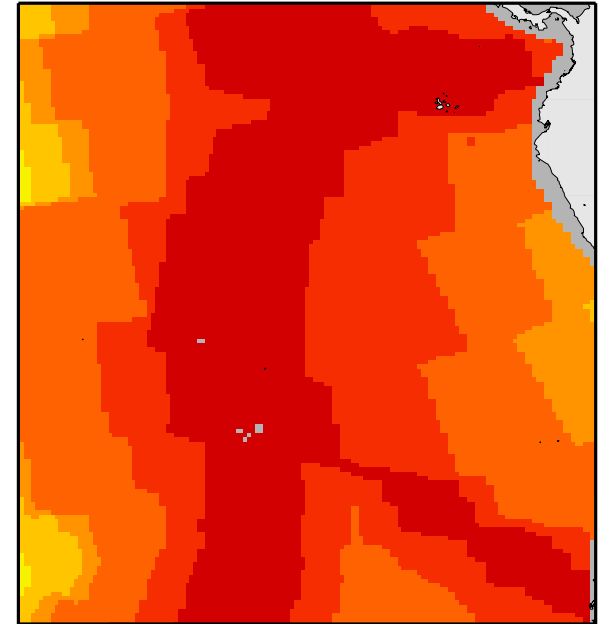


Topography

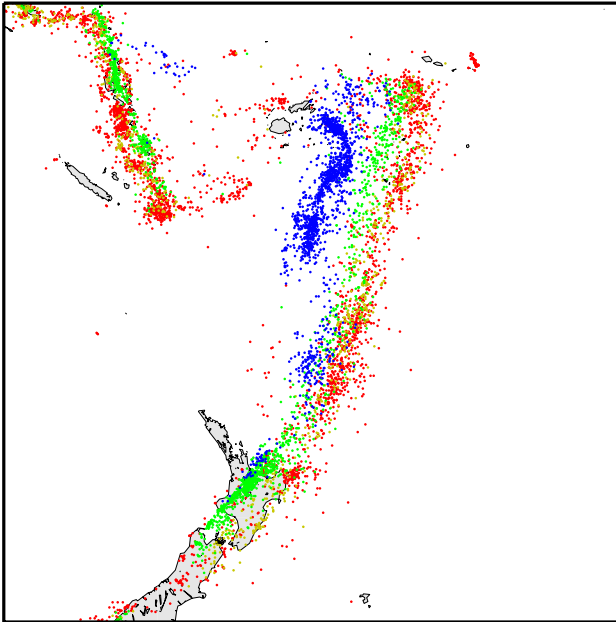


Volcanoes

Divergent Plate Boundary East Pacific Rise



Seafloor Age



Earthquakes

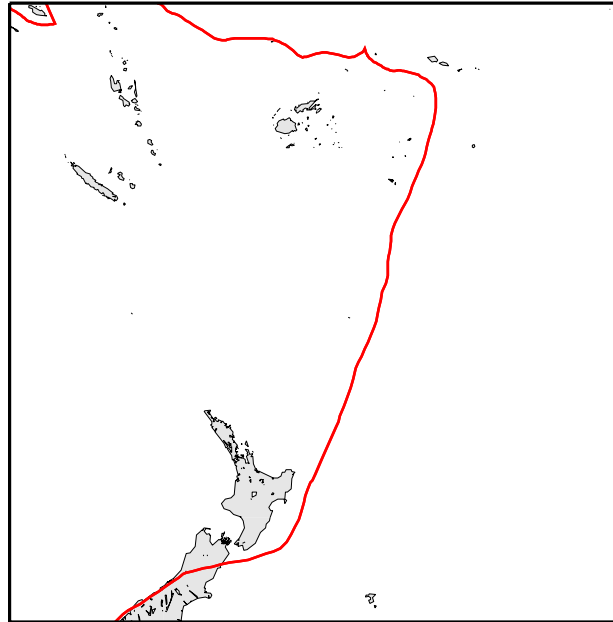
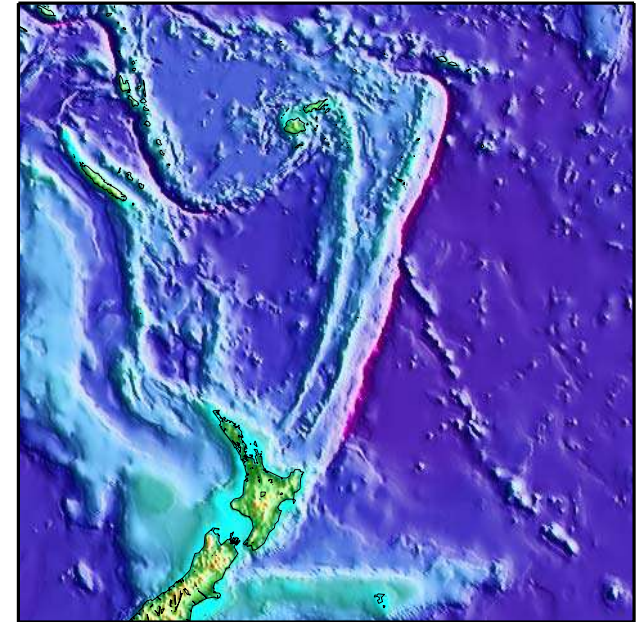
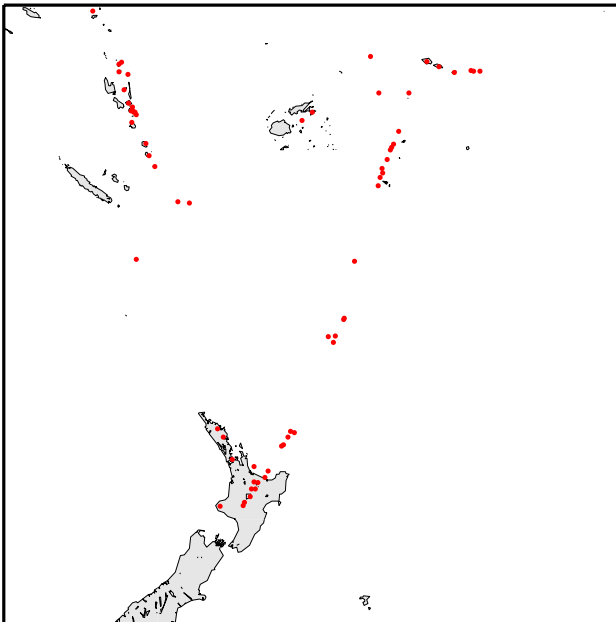


Plate Boundaries

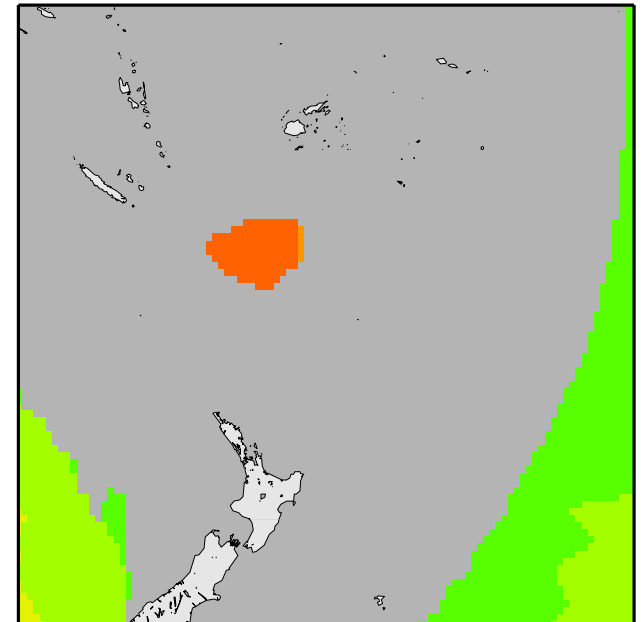


Topography

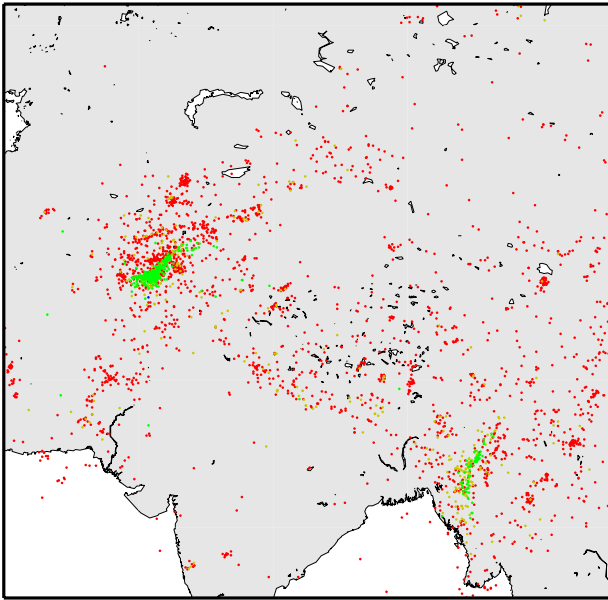


Volcanoes

Convergent Plate Boundary Fiji/Tonga



Seafloor Age



Earthquakes

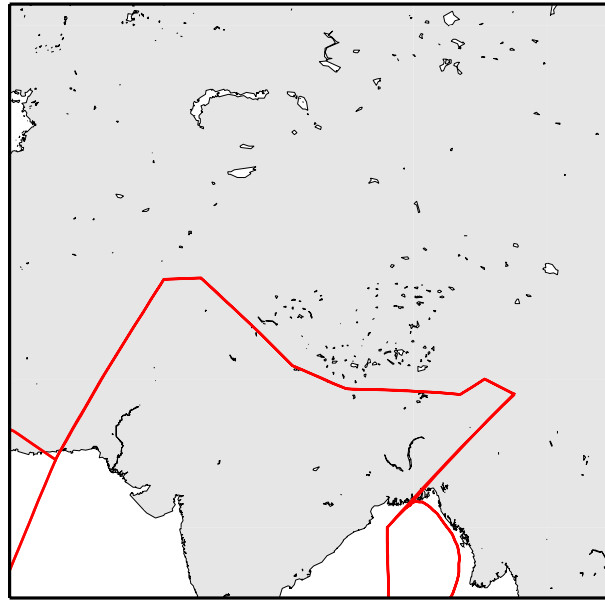
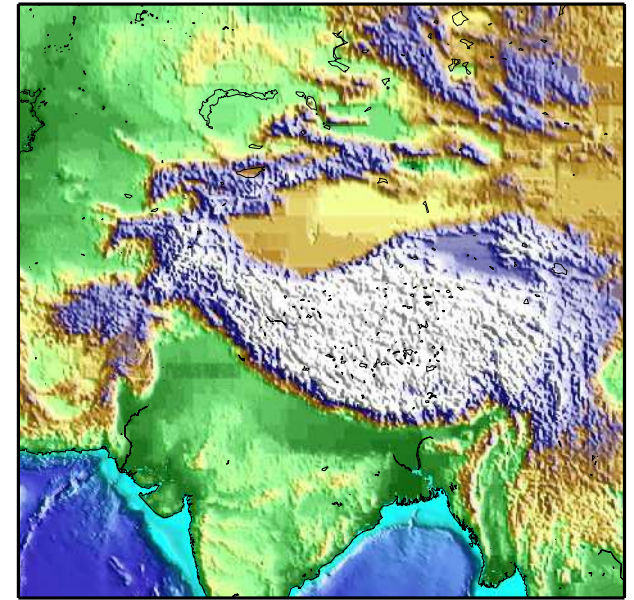
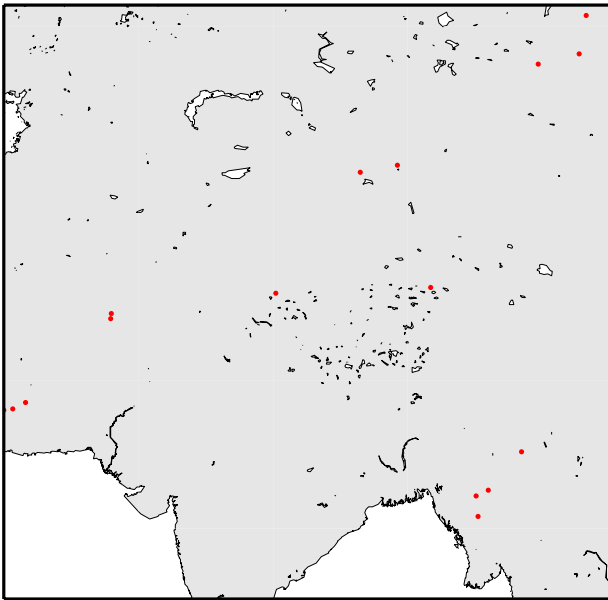


Plate Boundaries

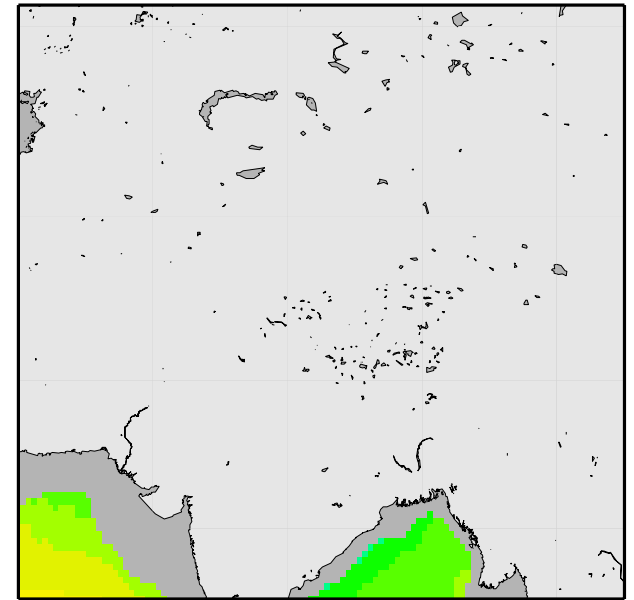


Topography

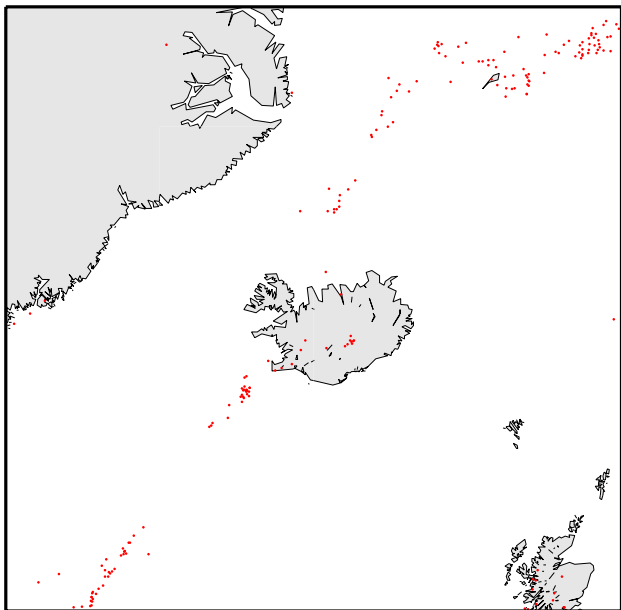


Volcanoes

Convergent Plate Boundary India/Tibet



Seafloor Age



Earthquakes

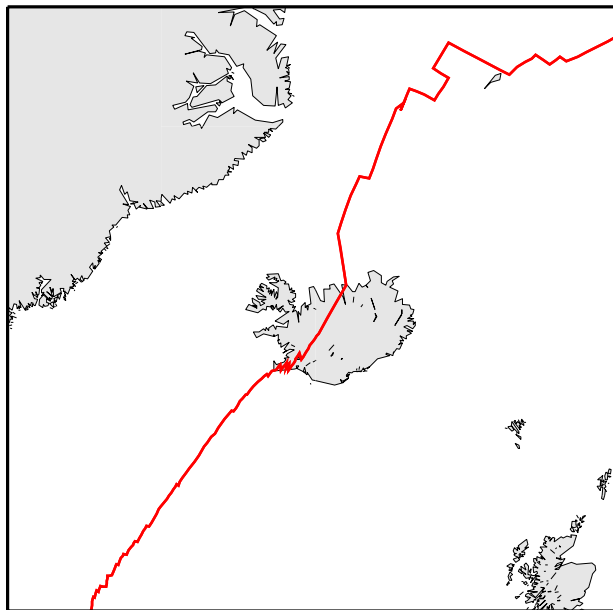
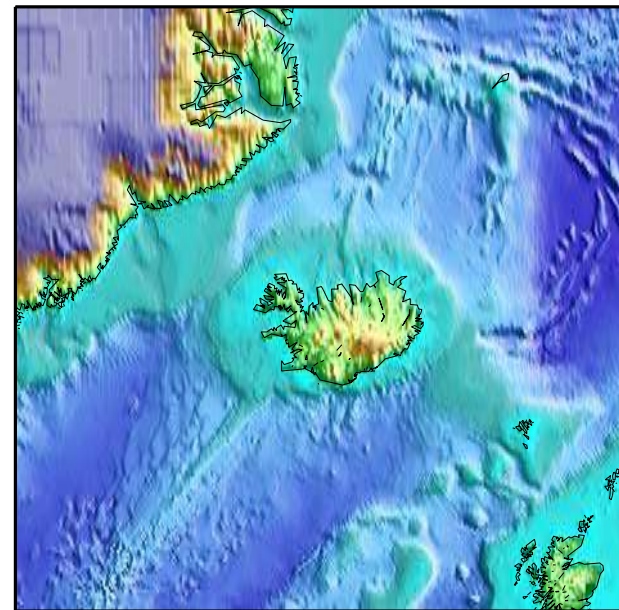
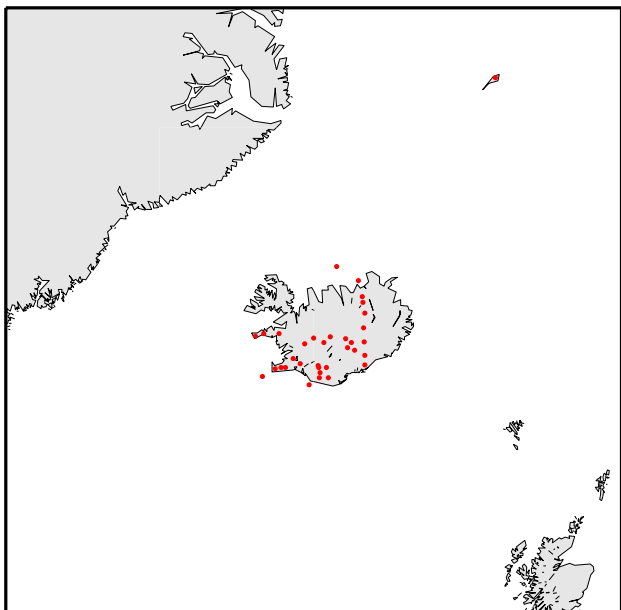


Plate Boundaries

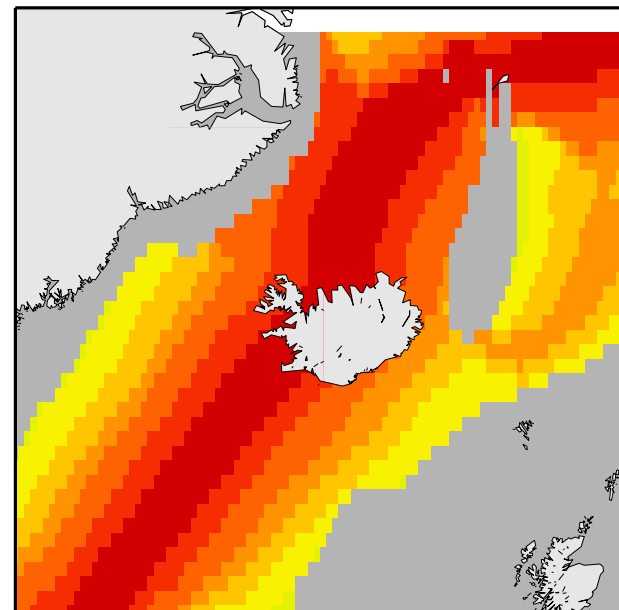


Topography

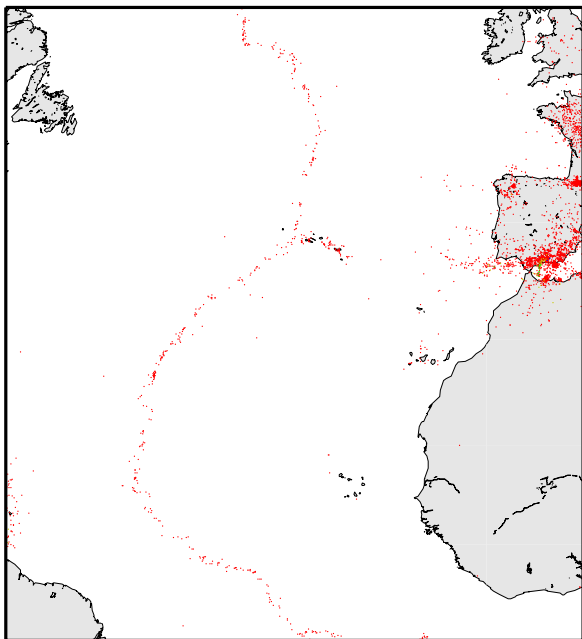


Volcanoes

Divergent Plate Boundary Iceland and Mid-Atlantic Ridge



Seafloor Age



Earthquakes

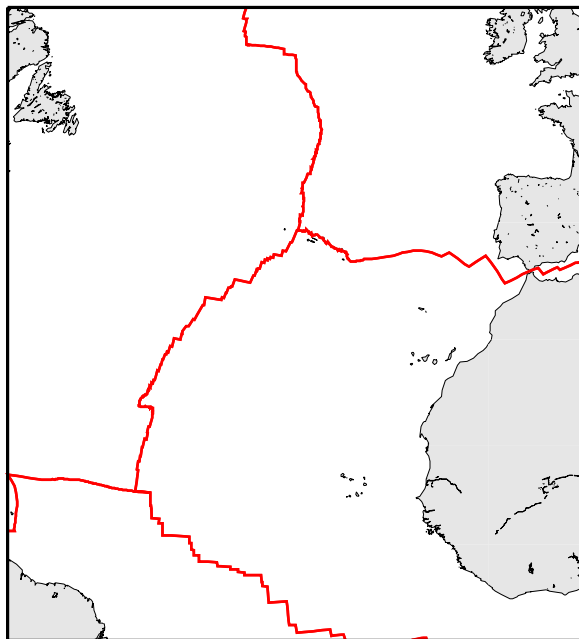
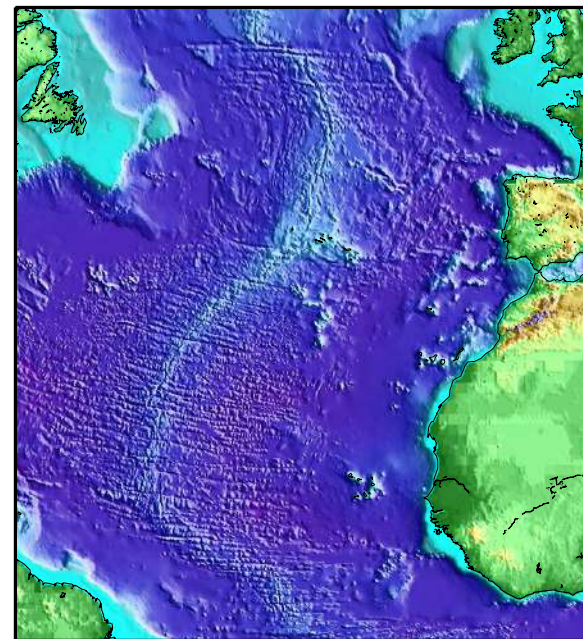
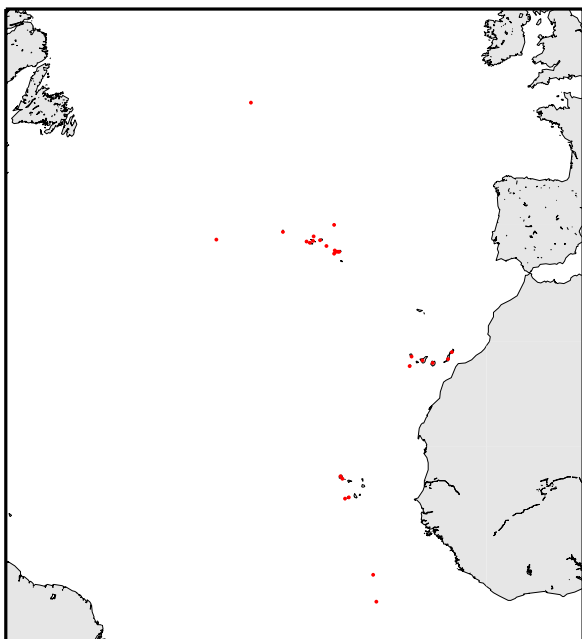


Plate Boundaries

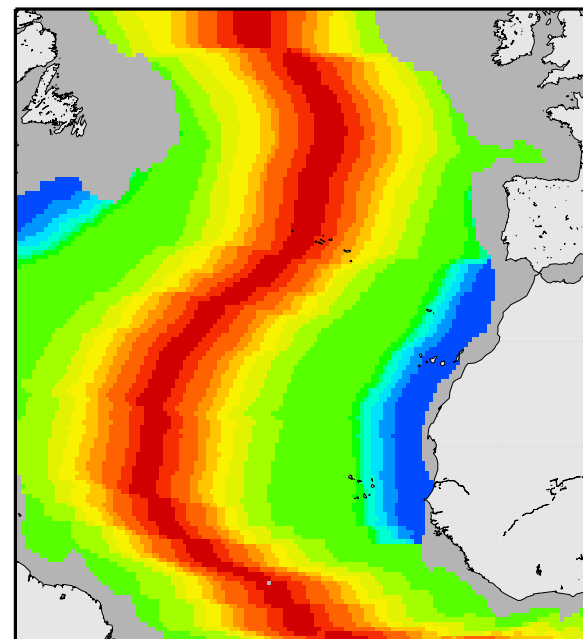


Topography

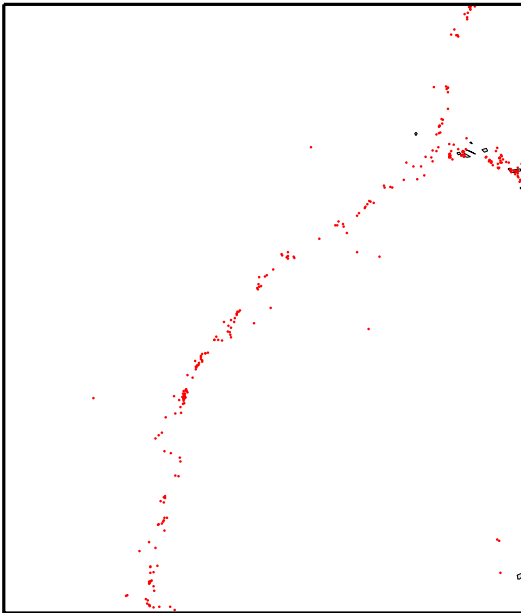


Volcanoes

Divergent Plate Boundary Mid-Atlantic Ridge



Seafloor Age



Earthquakes

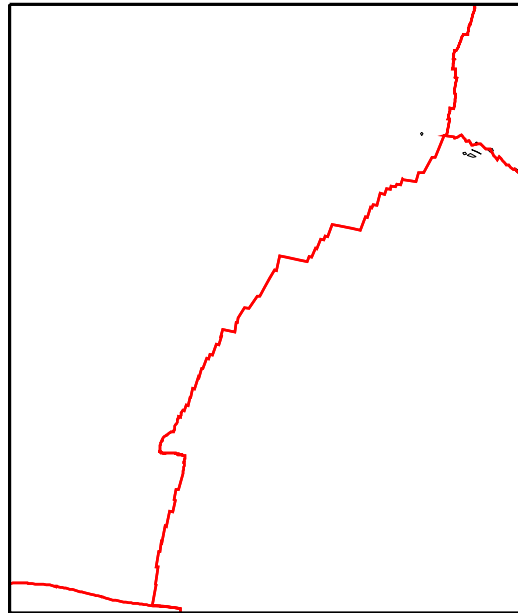
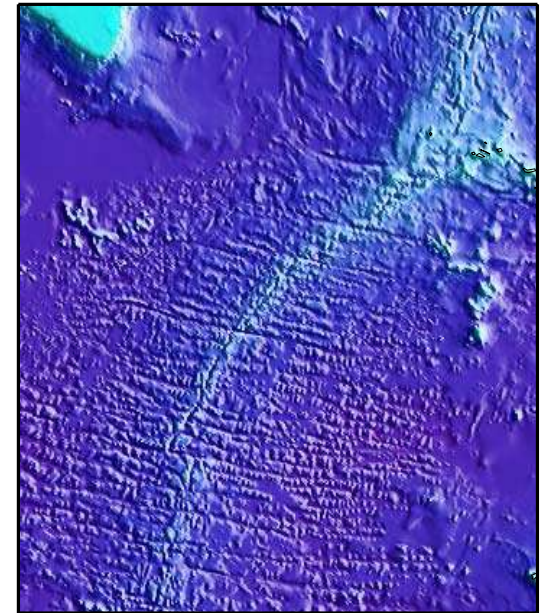
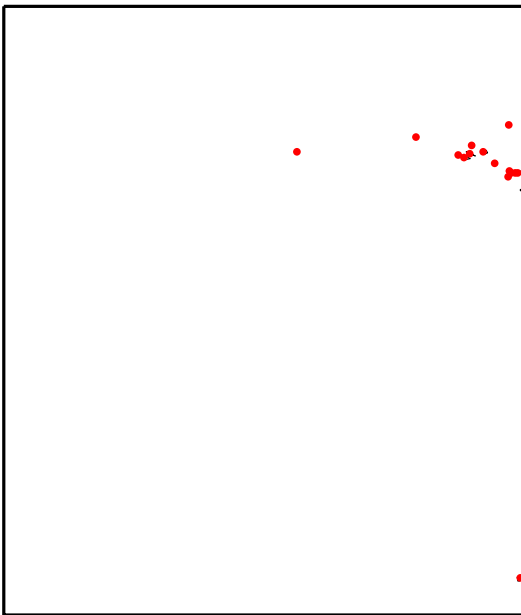


Plate Boundaries

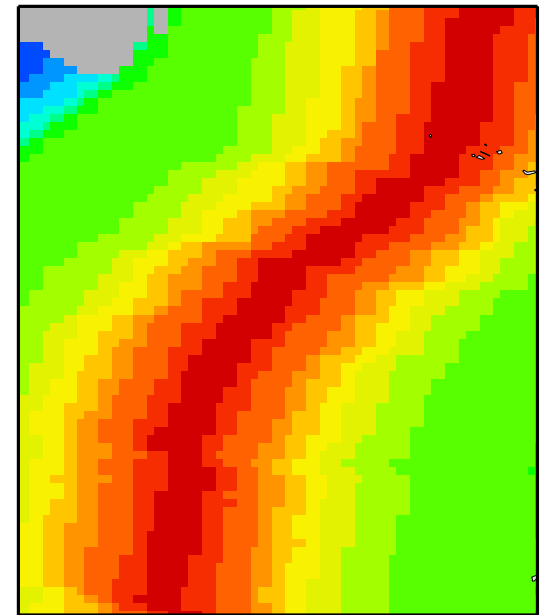


Topography



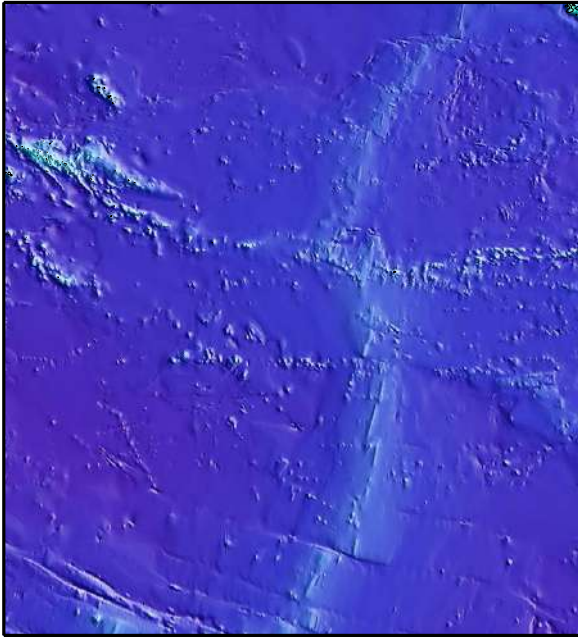
Volcanoes

Divergent Plate Boundary Mid-Atlantic Ridge

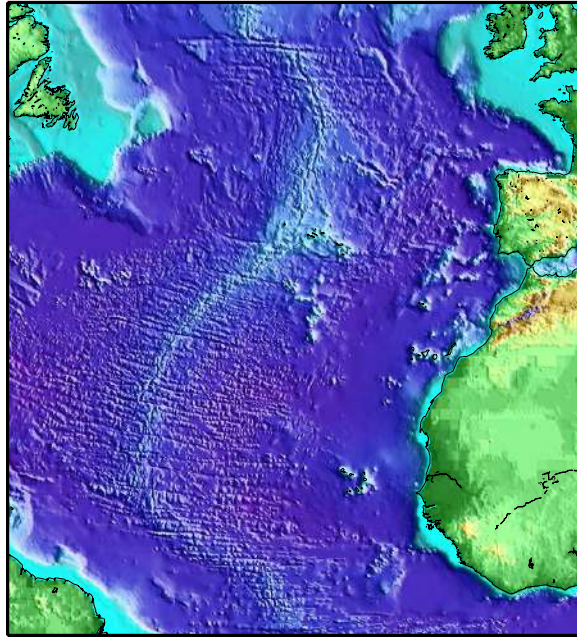


Seafloor Age

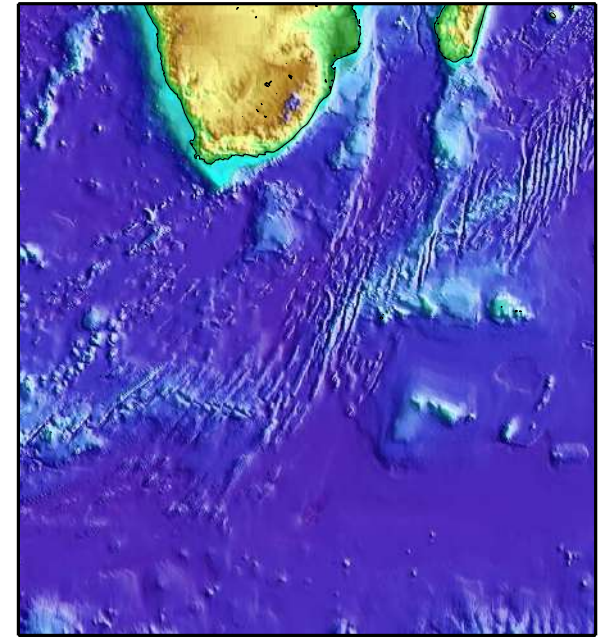
Divergent Plate Boundaries - Varying Spreading Rate



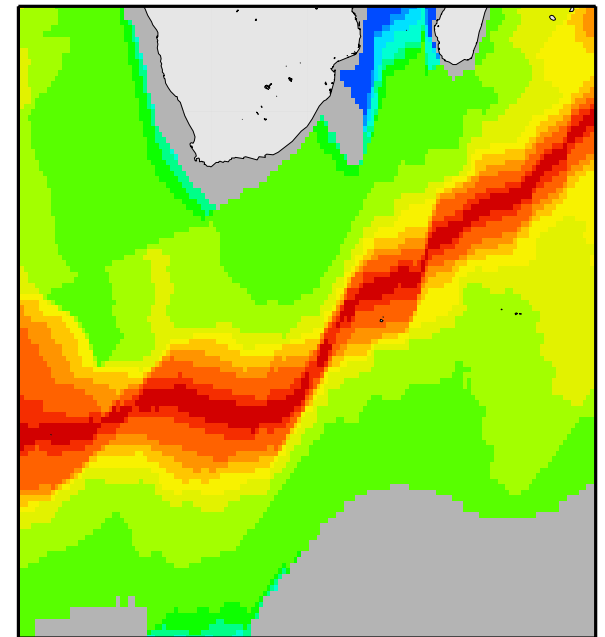
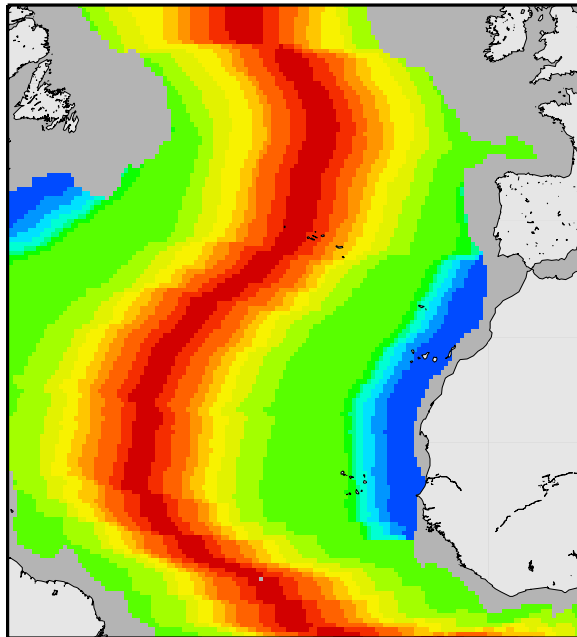
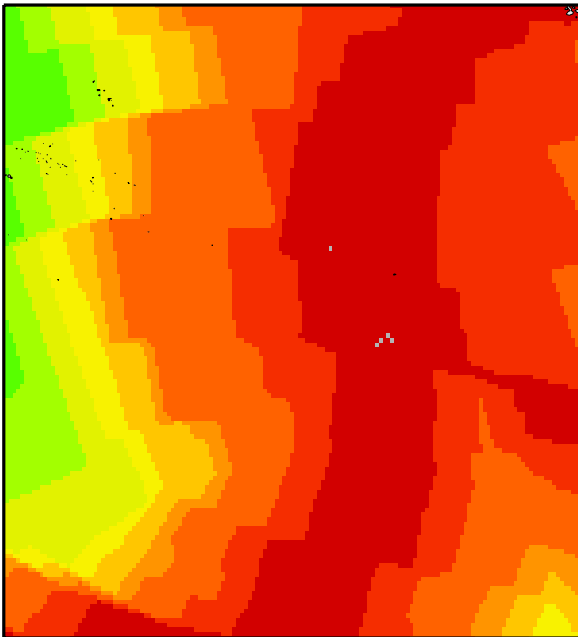
East Pacific Rise - Very Fast Spreading

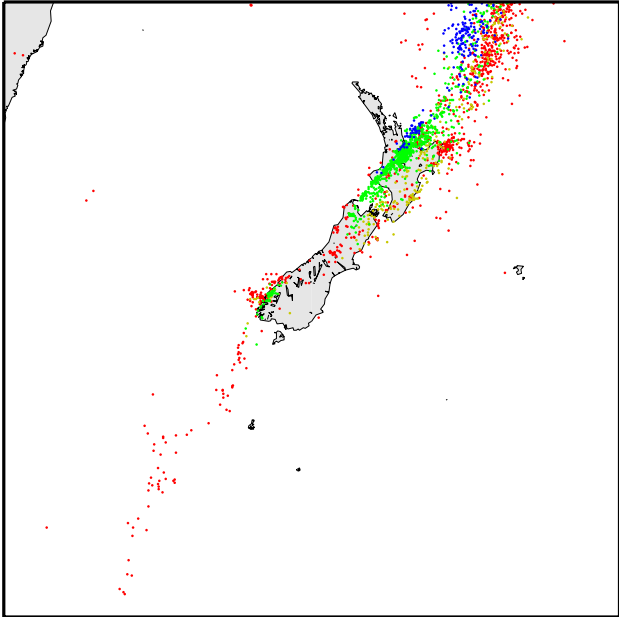


Mid Atlantic Ridge - Slow Spreading



Southwest Indian Ridge - Very Slow Spreading





Earthquakes

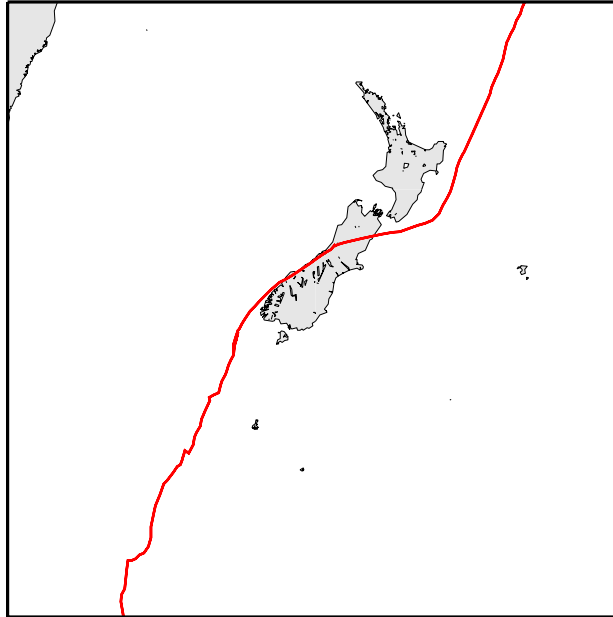
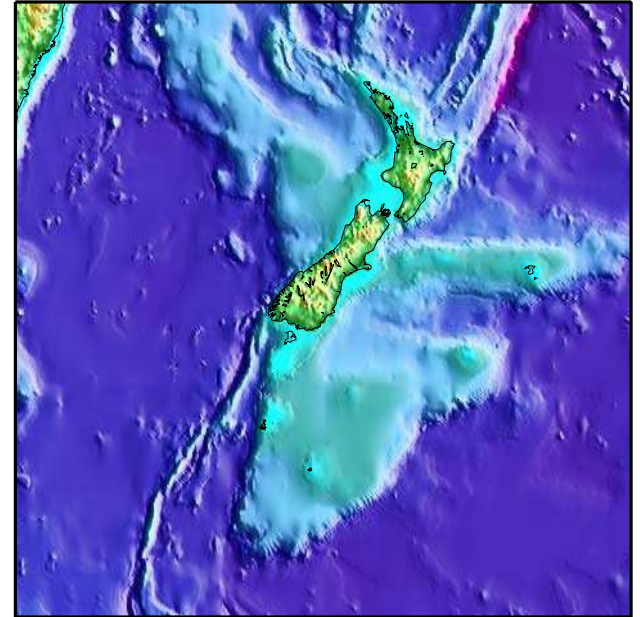
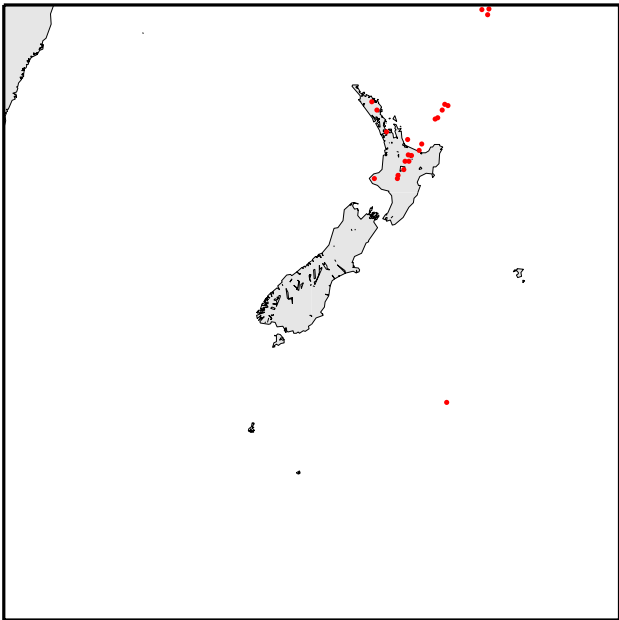


Plate Boundaries

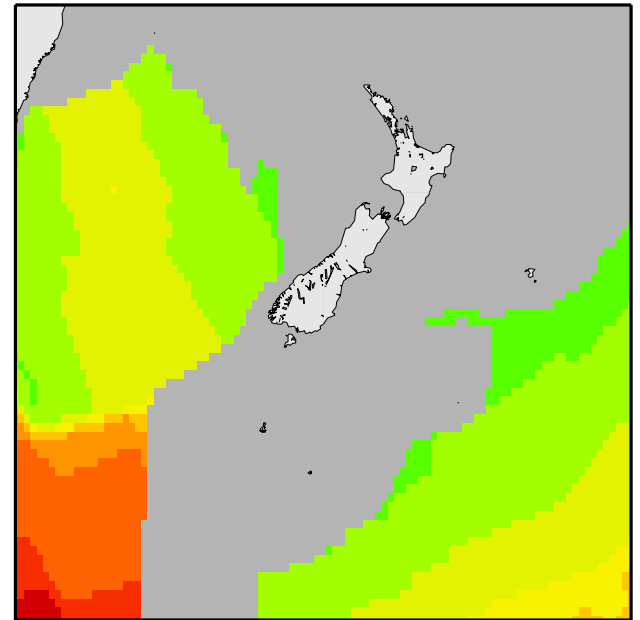


Topography

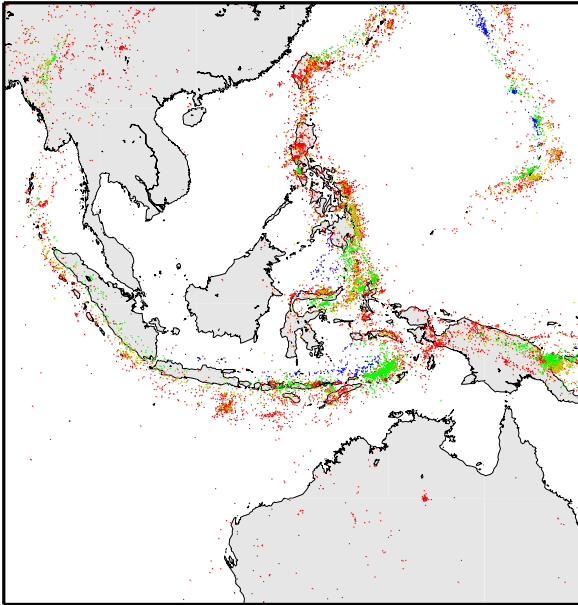


Volcanoes

Transform Plate Boundary New Zealand



Seafloor Age



Earthquakes

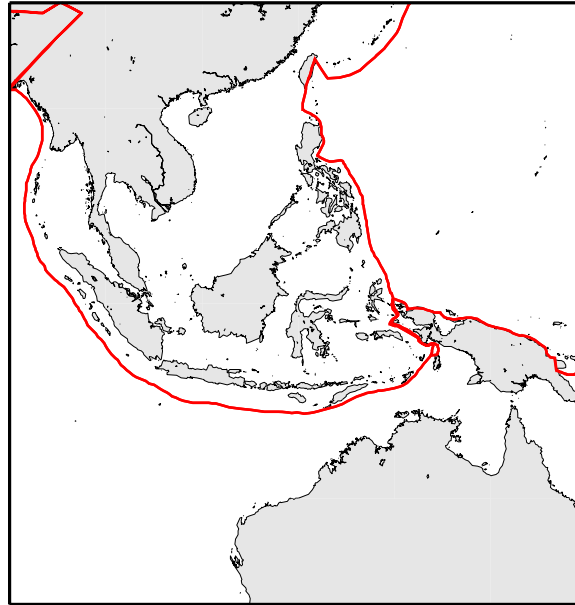
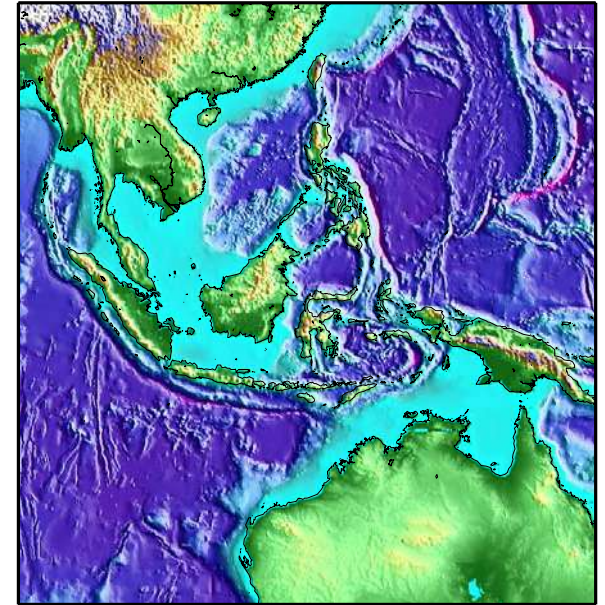
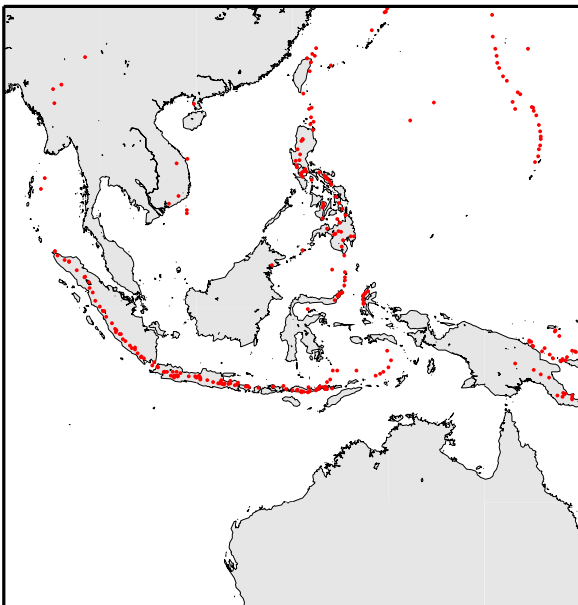


Plate Boundaries

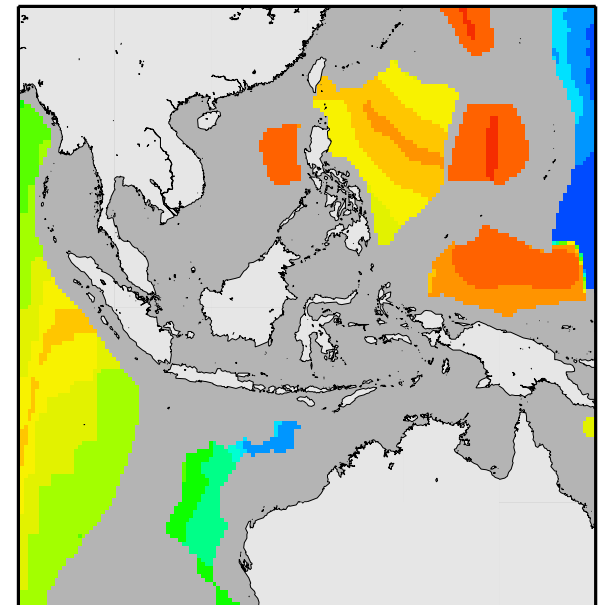


Topography

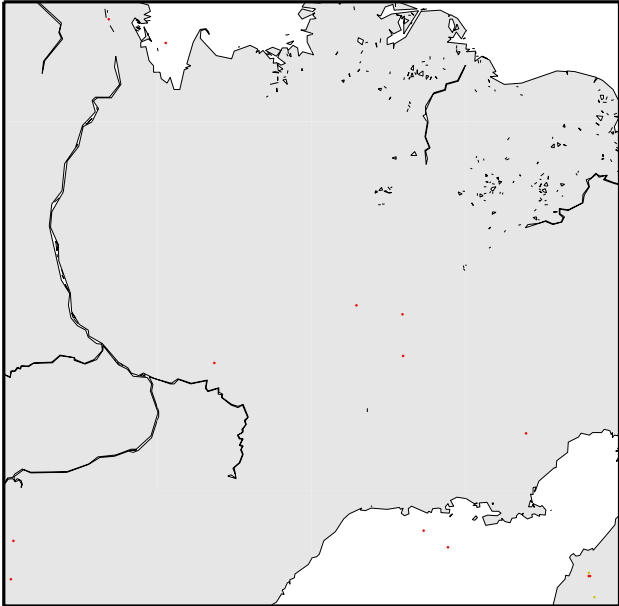


Volcanoes

Convergent Plate Boundary Southeast Asia



Seafloor Age



Earthquakes

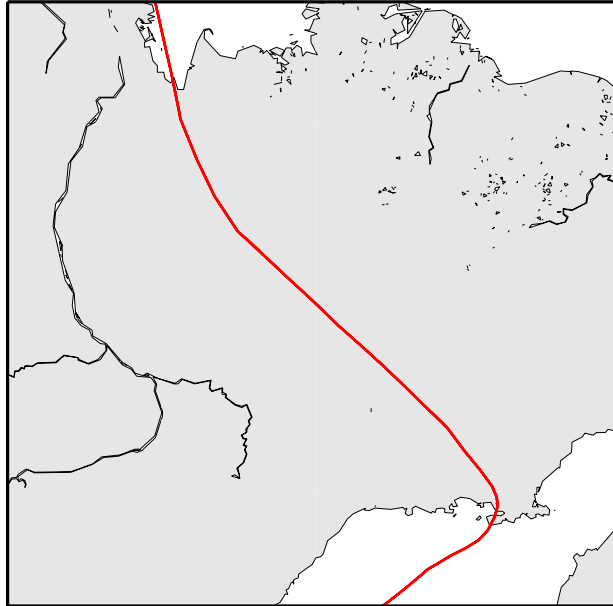
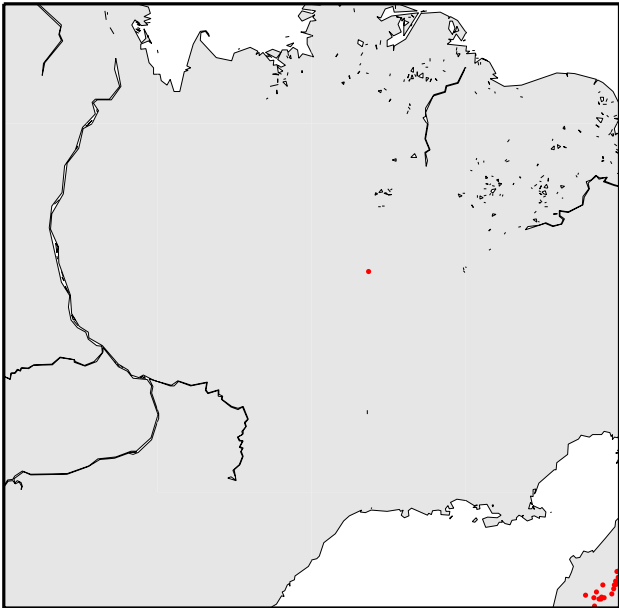


Plate Boundaries

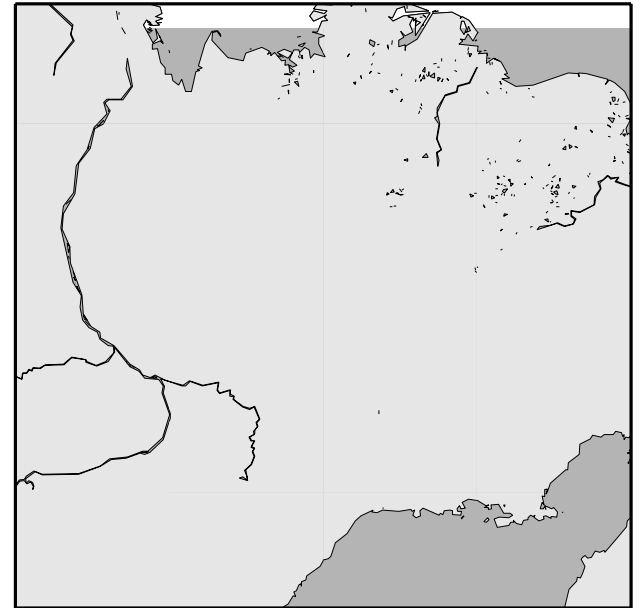


Topography

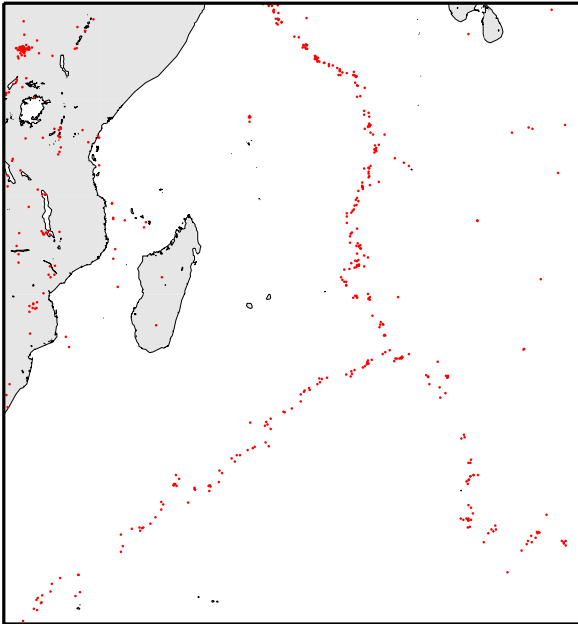


Volcanoes

**Transform (?) Plate Boundary
North American/Eurasian Plates**



Seafloor Age



Earthquakes

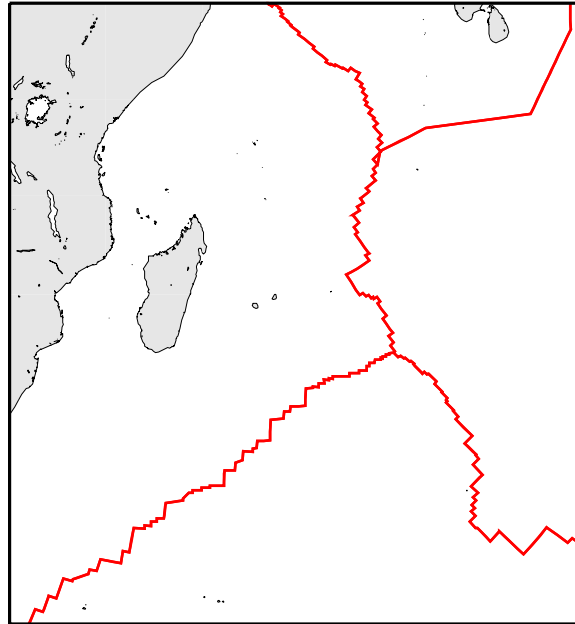
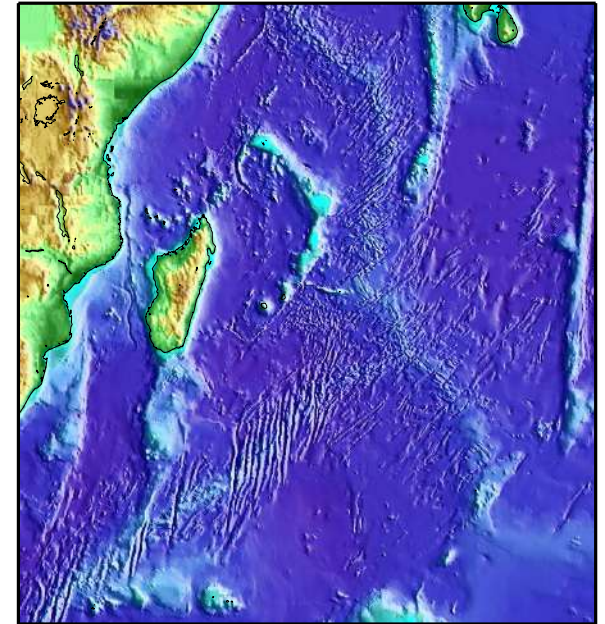
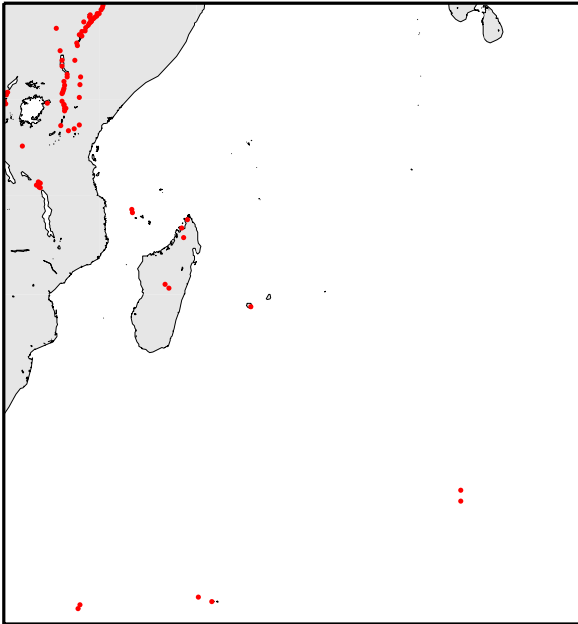


Plate Boundaries

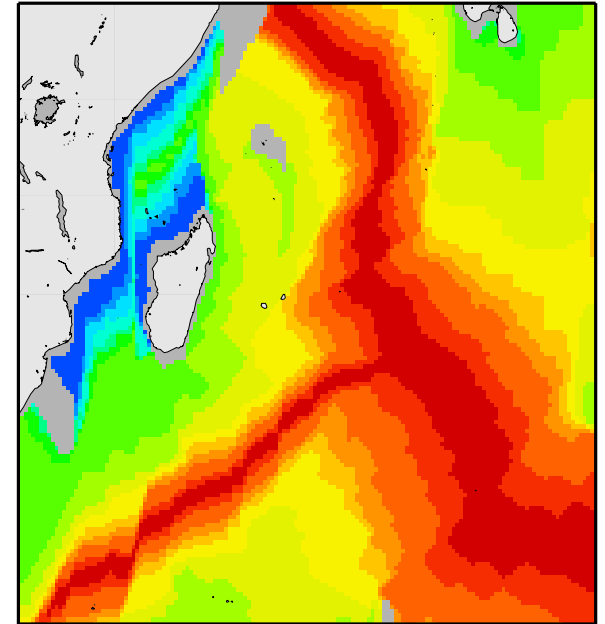


Topography

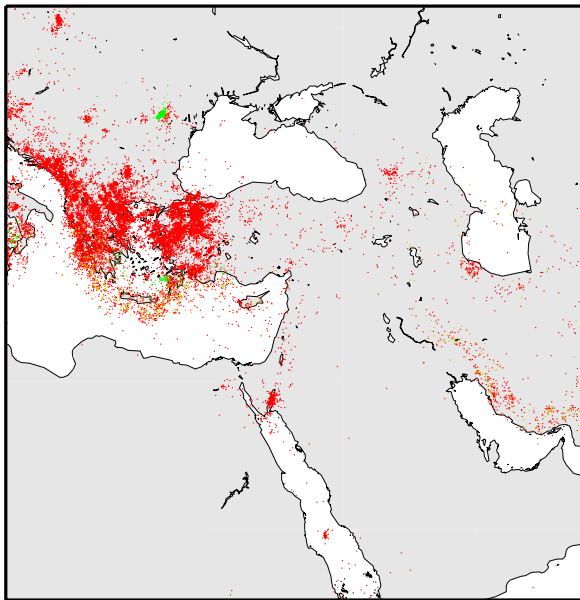


Volcanoes

Divergent Plate Boundary Southwest Indian Ridge



Seafloor Age



Earthquakes

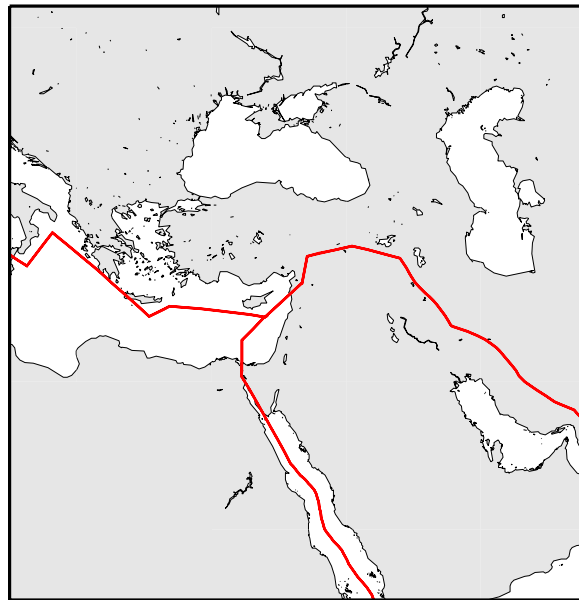
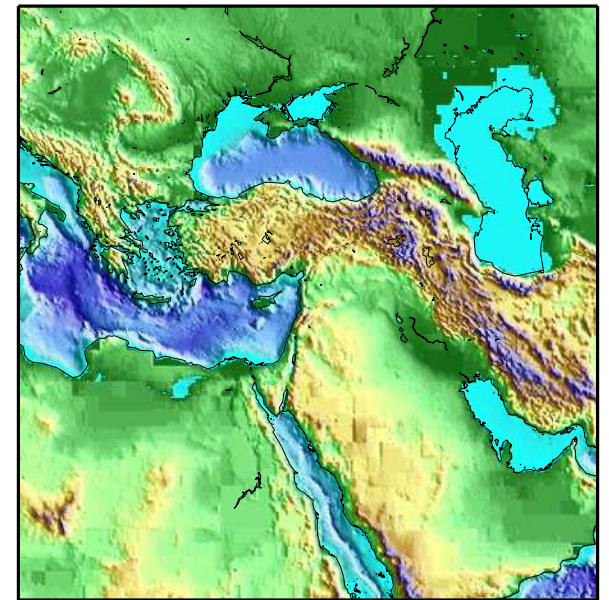
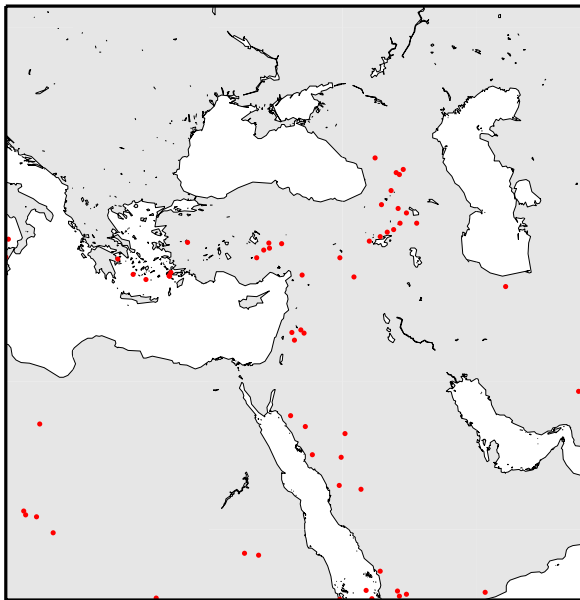


Plate Boundaries

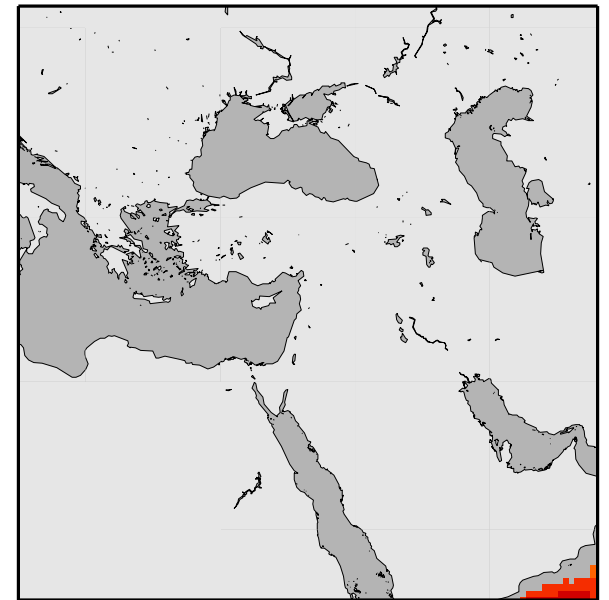


Topography



Volcanoes

Mix of Plate Boundaries Middle East



Seafloor Age