

Title IX Workshop

October 18, 2022
Mickes O'Toole

1

Definitions

2

Quid Pro Quo Harassment

- An employee conditioning an aid, service, or benefit of the school district on an individual's participation in unwelcome sexual conduct
- Does not need to be evaluated for "severity, pervasiveness, and objective offensiveness"
- Expressed or implied

3

- Unwelcome conduct
- Reasonable person
- So severe, pervasive, and objectively offensive
- Effectively denies a person's equal access to education program or activity

Hostile Environment

4

Harassment under VAWA & Clery Act

- Sexual Assault
- Dating Violence
- Domestic Violence
- Stalking

5

In an educational program
or activity-locations, events,
or circumstances over which
the school district exercised
substantial control over both
the Respondent and the
context in which the sexual
harassment occurs

Location

6

- Adverse treatment in response to seeking protection under Title IX
- May be independent basis for charge or litigation
- Examples include harassment in educational program, discipline, denial of participation

Retaliation

7

Actual Knowledge

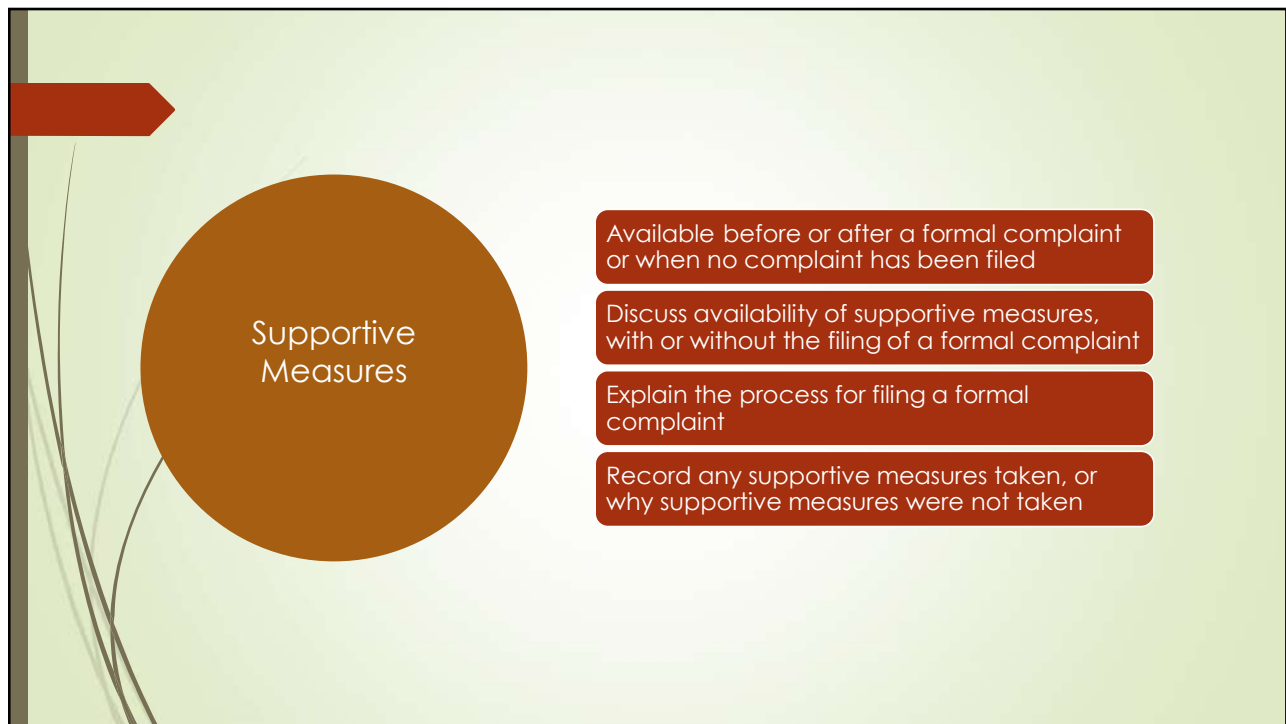
"Actual knowledge" is notice of sexual harassment or allegations of sexual harassment to any district employee

Any person may report sexual discrimination (alleged victim or any third party)

May report to Title IX Coordinator in person, by mail, phone, or email

District must respond promptly

8

The slide features a light green background with a faint, stylized image of a person in a white shirt. On the left, a dark brown vertical bar contains a red arrow pointing right. A large brown circle is positioned on the left side of the slide, containing the text "Supportive Measures". To the right of the circle, there are four red rounded rectangular boxes, each containing a line of text.

Supportive Measures

- Available before or after a formal complaint or when no complaint has been filed
- Discuss availability of supportive measures, with or without the filing of a formal complaint
- Explain the process for filing a formal complaint
- Record any supportive measures taken, or why supportive measures were not taken

9

The slide features a light green background with a faint, stylized image of a person in a white shirt. On the left, a dark brown vertical bar contains a red arrow pointing right. The word "Investigation" is written in a large, black, sans-serif font. Below it, the text "Of a formal complaint of Title IX sexual harassment" is written in a smaller, black, sans-serif font.

Investigation

Of a formal complaint of Title IX sexual harassment

10

Requirements

01

Ensure that the burden of proof and the burden of gathering evidence rest on the school district and not on the parties, except certain records

02

Provide an equal opportunity for parties to present witnesses and evidence

03

Not restrict the ability of either party to discuss the allegations or gather and present evidence

11

Interview Guidelines

Face-to-face

Relaxed, respectful atmosphere

Brief introduction to explain purpose of interview

Obtain signed and dated written statement

Open-ended v. closed questions

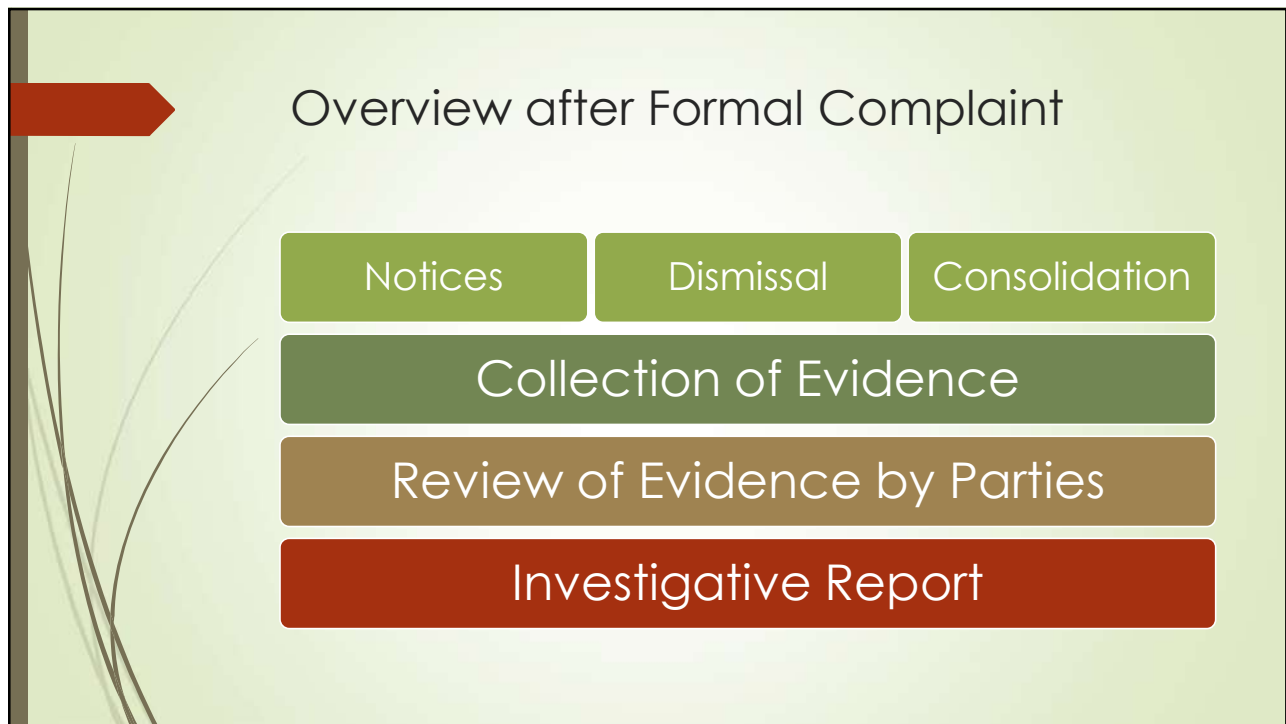
Identify specifics (e.g., dates, locations, people)

Take thorough notes (possibly third person in room)

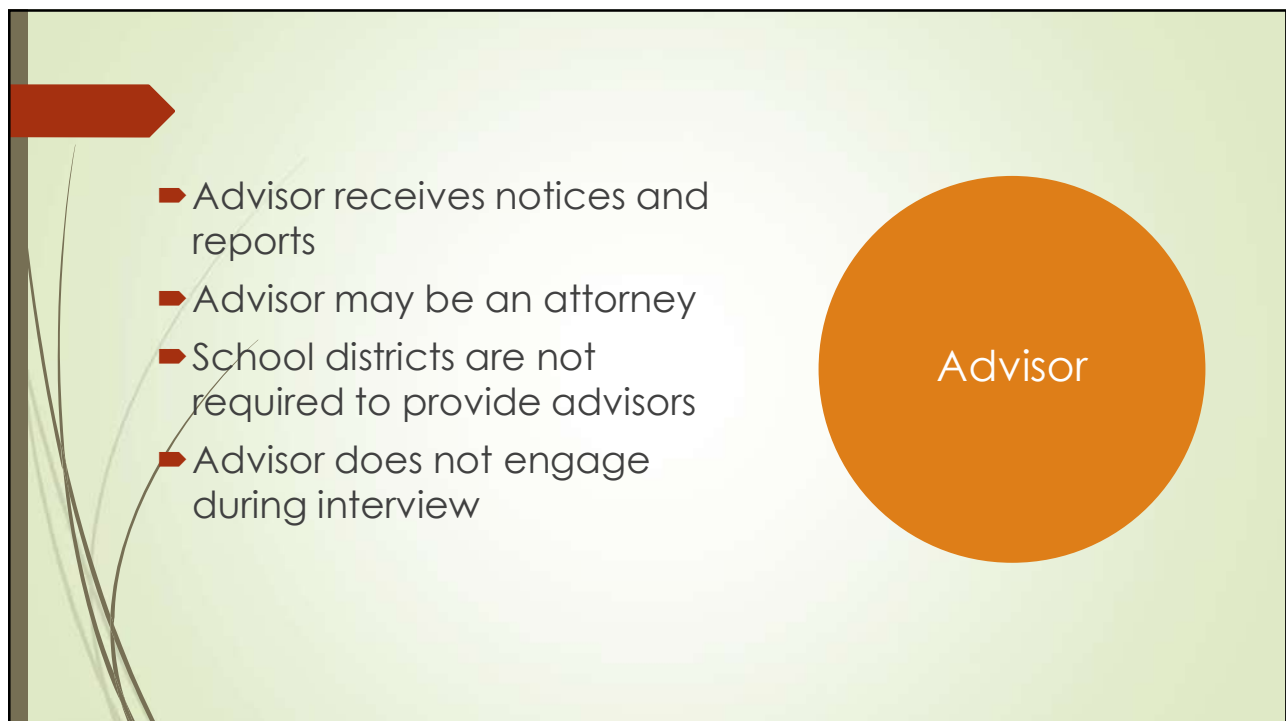
Do not promise complete confidentiality

Don't offer your opinion

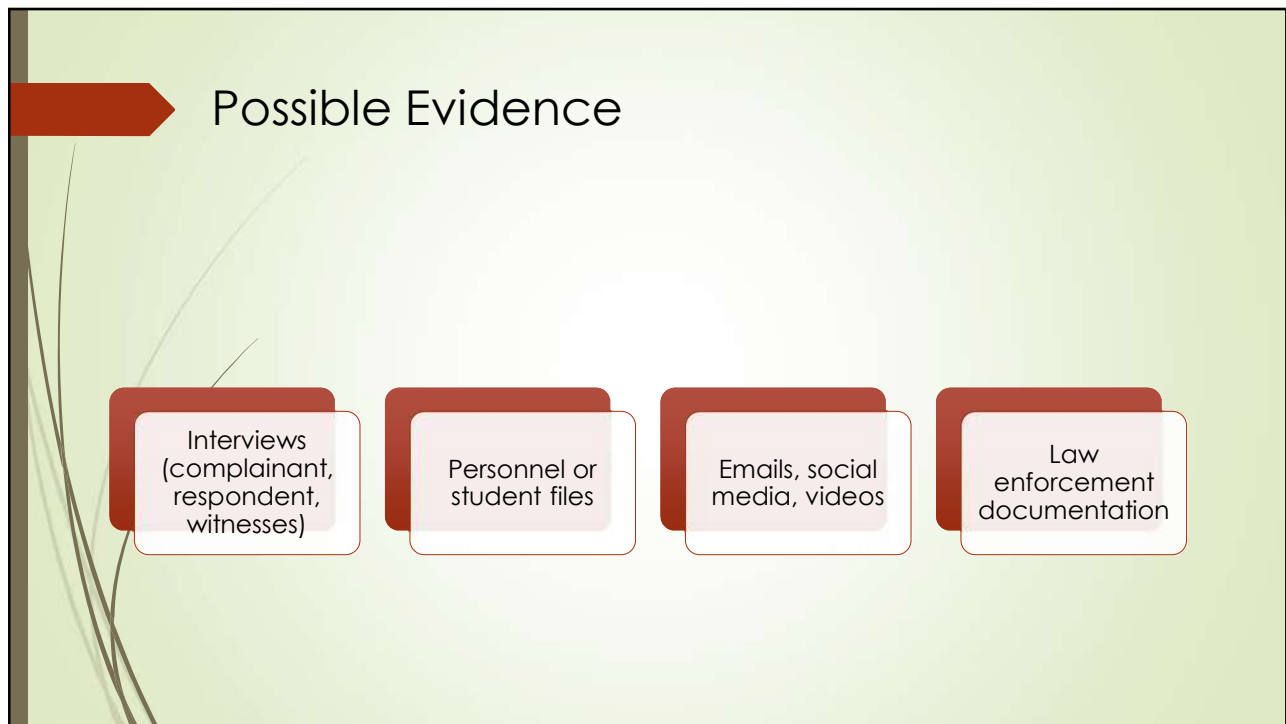
12



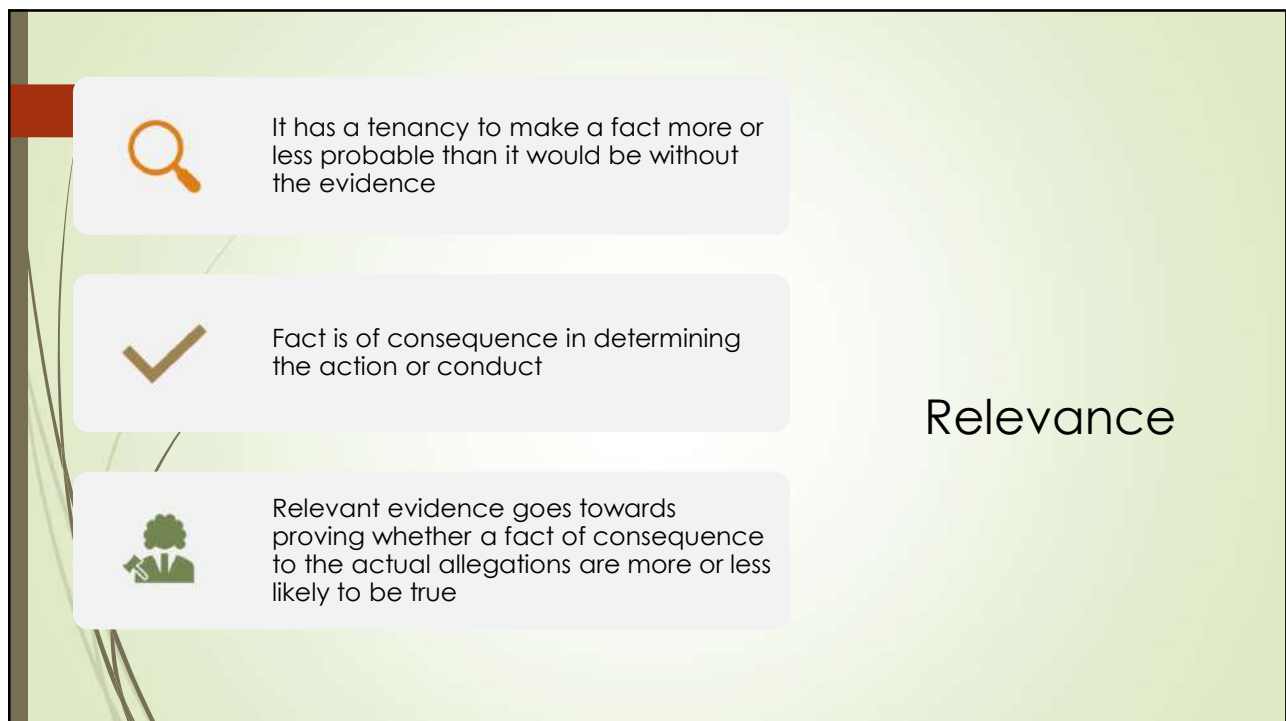
13



14



15



16

Consent

- Consent is informed, actively given, and mutually understood and accepted
- Coercion, intimidation, incapacity prevent consent
- Consent to one form of conduct does not imply consent to any other form of conduct
- Consent can be withdrawn

17

Reminder

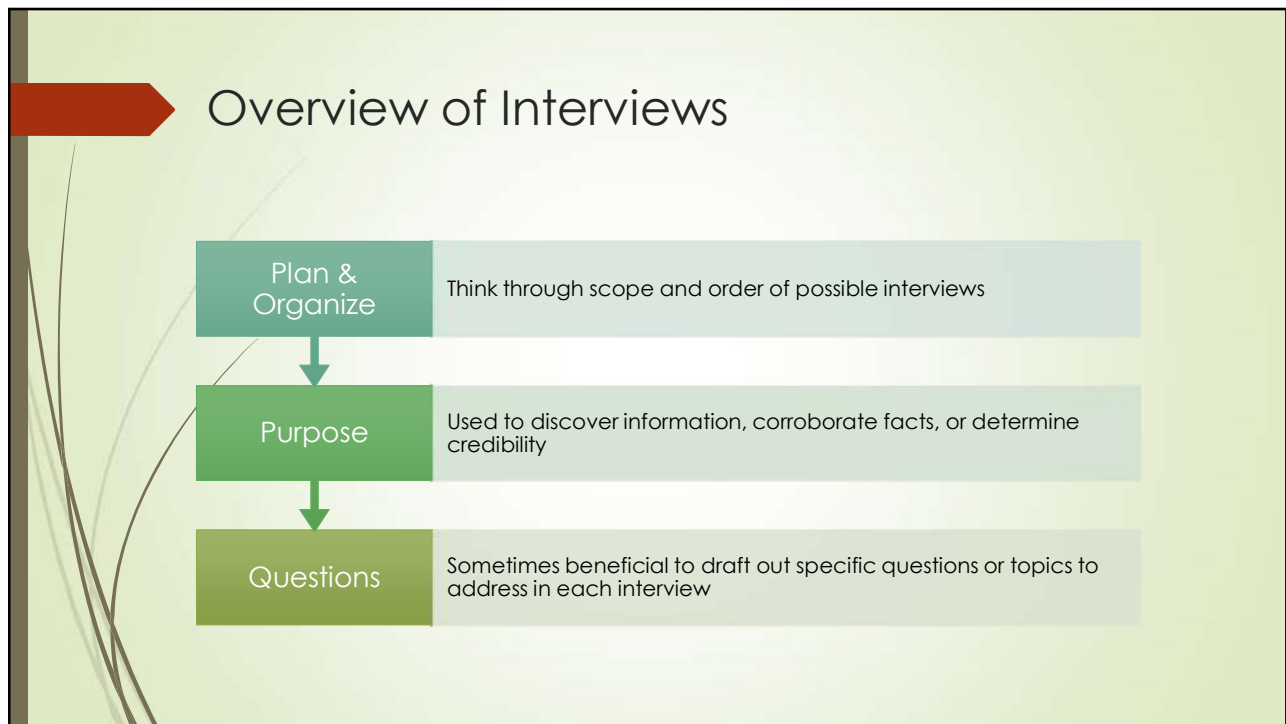
Parties are not restricted in discussing allegations with others

Parties have right to gather evidence favorable to their position

No party can intimidate, harass, retaliate

Monitor situation during investigation

18



19

Investigative Report

20

Review Investigative Report & Written Responses

Independent obligation to objectively evaluate all inculpatory and exculpatory evidence; cannot only rely on recommendation from investigator

Allow parties to advocate to the decision-maker regarding the relevance of evidence and omission of relevant evidence

Parties can provide input and make arguments about the relevance of evidence, evidence they believe was overlooked in the investigative report, and how a Decision-Maker should weigh the evidence

21

Decision

22



Submission of Questions

- Decision Maker must afford each party the opportunity to submit written, relevant questions that a party wants asked of any party or witness
- Must provide each party with the answers
- Must allow for additional, limited follow-up questions from each party
- Determines relevancy of questions and provide written explanation for rejected questions

23

Reliance on Statements

- The Decision-Maker cannot rely on the statements of a party or witness who does not submit to exchange of questions
- "Submit" means *answering* those questions that are relevant
- If a party or witness was not asked questions, or was not asked a particular question about a particular statement in the investigative report, the Decision-Maker is not precluded from relying on a statement by a party or witness who was not given the opportunity to answer written questions

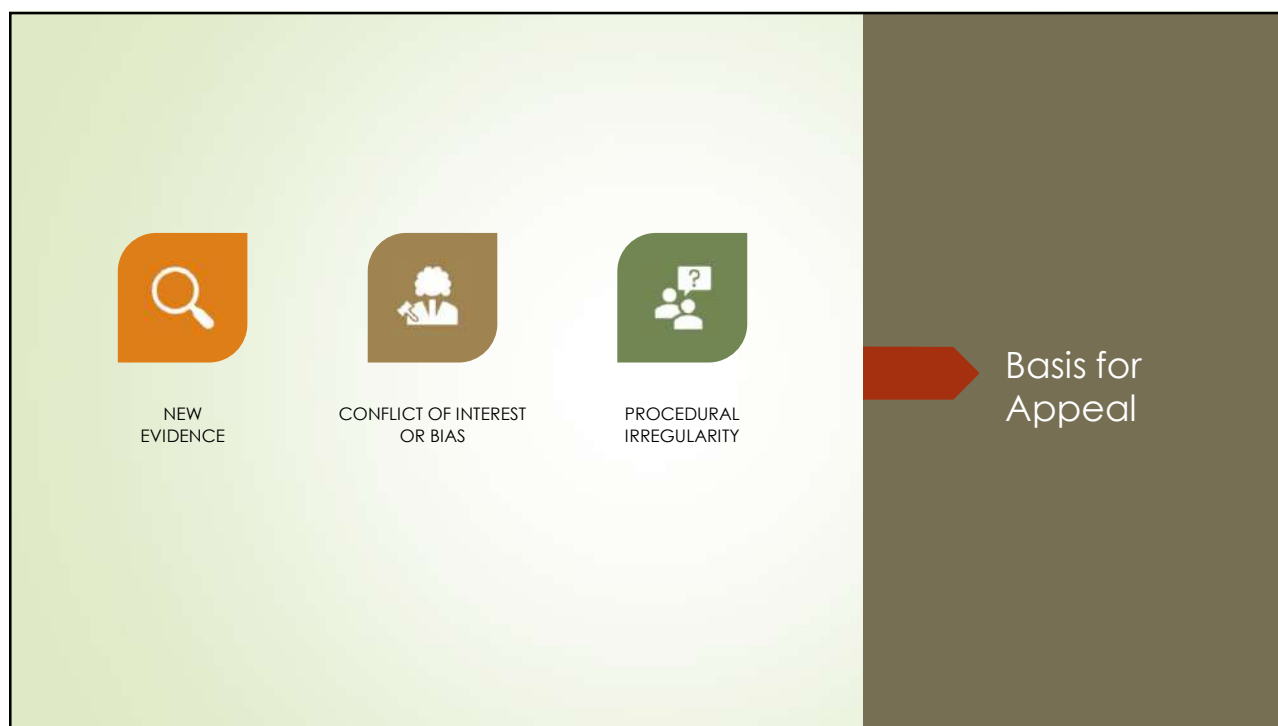
24



25



26



27