

TIGER PAUSE



February 2019

Principal's Message

Dear Troutdale Families and Community Members,

Greetings! Spring Parent/Teacher Conferences are on March 13th and 14th. This is an excellent time for us to monitor student goals and strengthen the line of communication between school and home. It is essential that our students understand that the school and home collaboration is strong, and that we are jointly invested in their academic and social/emotional growth. STAR test data is one indicator of student growth, and from my analysis, we are progressing quite nicely across all grade levels in both reading and math. However, we should continue to increase our expectations, so that our students reach their maximum potential.

On a different note, I have fielded several concerns regarding idling cars during drop-off and pick-up. Please, kindly turn off your engine while you are parked. Also, because this pick-up and drop-off area is a designated fire lane, we ask that you do not park there for longer than 5 minutes. Thank you for your consideration.

As always, please contact me with any questions, concerns, or innovative ideas that could benefit the Troutdale School community.

Regards,

Principal Ed Krankowski



Lost and Found

Please have your child check the lost and found area for any missing items. Unclaimed articles of clothing will be donated to charity VERY SOON!

UPCOMING EVENTS

February

- 18 NO SCHOOL/Holiday
- 20 Immunization Exclusion Day
- 21 5th Grade Field Trip to BizTown
- 22 Box Top Contest Ends
- 22 PALS Family Bingo Night, 6-7:30 PM
- 25 Mad Science Begins, 7:40 AM

March

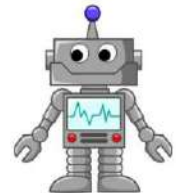
- 6 Health Screening – KG/1st/3rd Grades
- 13-15 NO SCHOOL/Parent Teacher Conferences
- 25-29 NO SCHOOL/Spring Break

Mad Science

The next session of Mad Science starts soon! Don't miss out on the **Science of Machines**. This class is held on late start Mondays from 7:40-8:40 am at the school. Dates: 2/25-3/18

COST: R \$59/NR \$71 for 4 weeks
Min. 15 ~ Max. 20

LOCATION: Onsite at each school
INSTRUCTOR: Mad Science Staff



Register ONLINE @ www.troutdaleoregon.gov

Immunizations Update

Exclusion day for state required immunizations is Wednesday, February 20, 2019. Students who are not current will not be able to attend school until their records are complete. Please arrange for your child to receive needed immunizations so that they can remain in school. If you need assistance in locating a health care provider or clinic site, please contact our school nurse.

News From PALS



Mt. Hood Theatre season passes are back!

PALS is selling student season passes for Mt. Hood Theatre. \$9 admits a child into 10 films with 2 parents or grandparents (siblings, friends, and all other adults must have their own ticket that can be bought at the theatre.) You can not beat this deal. They can be purchased with cash or check in the school office during school hours while supplies last.

Last Bingo of the school year!

Join us for Bingo Night on **Feb 22nd from 6-7:30 at the school**. Bring in non-perishable food items and receive free bingo cards. Additional cards can be bought. There will be pizza and treats for purchase, a raffle and prizes for winners. Movie Tickets and t-shirts will also be available for purchase.



Last Call for Box Tops

Until Feb 22, there will be a contest to see which grade can collect the most Box Tops. The top winners will earn a popcorn party.

Thank you -Schmizza Pizza Pub Fundraiser

Thank you to everyone who was able to make it to the snow day fundraiser. PALS raised \$137. While turnout was low due to the weather, that amount of money covers one kindergarten class field trip. Every bit counts!

Keep an eye out for our next restaurant fundraiser in April. We hear there may be desserts involved!

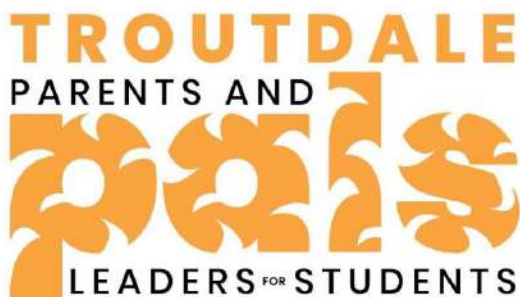


Volunteers

PALS is looking for volunteers to help out during the next Bingo. Contact PALS if you or a family member 13 years old and up are able to help on Feb 22 from 5:30-7:30pm. Email us at troutdaleelementarypals@gmail.com.

School T-shirts

Looking for another option when getting dressed in the morning? PALS is selling blue Troutdale Tiger t-shirts for \$15 or 2 for \$25. Ask office staff if you are interested in purchasing a shirt today. Kids and adult sizes are available.



Where can I find out about PALS events and opportunities for parents and families?

Follow us on Facebook @TroutdaleElementaryPALS to find out in real time.

Safety Reminder from Multnomah County Sheriff's Office

Oregon requires that children ride in rear-facing car seats until age 2. In Oregon, children less than 40 pounds must ride in a car seat with a five-point harness. Children who are at least 40 pounds or who have reached their harness system weight must use a booster seat until the adult seat best fits properly.

All children whose weight or height exceeds the forward-facing limit for their car seat should use a belt-positioning booster seat until the vehicle seat belt fits properly, typically when they have reached 4 feet 9 inches in height and are 8 through 12 years of age. See the attached "Car Seat Recommendations for Children" flyer for more information!

Car Seat Recommendations for Children

There are many car seat choices on the market. Use the information below to help you choose the type of car seat that best meets your child's needs.



- Select a car seat based on your child's age and size, choose a seat that fits in your vehicle, and use it every time.
- Always refer to your specific car seat manufacturer's instructions (check height and weight limits) and read the vehicle owner's manual on how to install the car seat using the seat belt or lower anchors and a tether, if available.
- To maximize safety, keep your child in the car seat for as long as possible, as long as the child fits within the manufacturer's height and weight requirements.
- Keep your child in the back seat at least through age 12.

Rear-Facing Car Seat

Birth – 12 Months

Your child under age 1 should always ride in a rear-facing car seat. There are different types of rear-facing car seats:

- Infant-only seats can only be used rear-facing.
- Convertible and All-in-One car seats typically have higher height and weight limits for the rear-facing position, allowing you to keep your child rear-facing for a longer period of time.



1 – 3 Years

Keep your child rear-facing as long as possible. It's the best way to keep him or her safe. Your child should remain in a rear-facing car seat until he or she reaches the top height or weight limit allowed by your car seat's manufacturer. Once your child outgrows the rear-facing car seat, your child is ready to travel in a forward-facing car seat with a harness and tether.



Forward-Facing Car Seat



1 - 3 Years

Keep your child rear-facing as long as possible. It's the best way to keep him or her safe. Your child should remain in a rear-facing car seat until he or she reaches the top height or weight limit allowed by your car seat's manufacturer. Once your child outgrows the rear-facing car seat, your child is ready to travel in a forward-facing car seat with a harness and tether.



4 - 7 Years

Keep your child in a forward-facing car seat with a harness and tether until he or she reaches the top height or weight limit allowed by your car seat's manufacturer. Once your child outgrows the forward-facing car seat with a harness, it's time to travel in a booster seat, but still in the back seat.

Booster Seat



4 - 7 Years

Keep your child in a forward-facing car seat with a harness and tether until he or she reaches the top height or weight limit allowed by your car seat's manufacturer. Once your child outgrows the forward-facing car seat with a harness, it's time to travel in a booster seat, but still in the back seat.

8 - 12 Years

Keep your child in a booster seat until he or she is big enough to fit in a seat belt properly. For a seat belt to fit properly the lap belt must lie snugly across the upper thighs, not the stomach. The shoulder belt should lie snug across the shoulder and chest and not cross the neck or face. Remember: your child should still ride in the back seat because it's safer there.



Seat Belt

8 - 12 Years

Keep your child in a booster seat until he or she is big enough to fit in a seat belt properly. For a seat belt to fit properly the lap belt must lie snugly across the upper thighs, not the stomach. The shoulder belt should lie snug across the shoulder and chest and not cross the neck or face. Remember: your child should still ride in the back seat because it's safer there.

