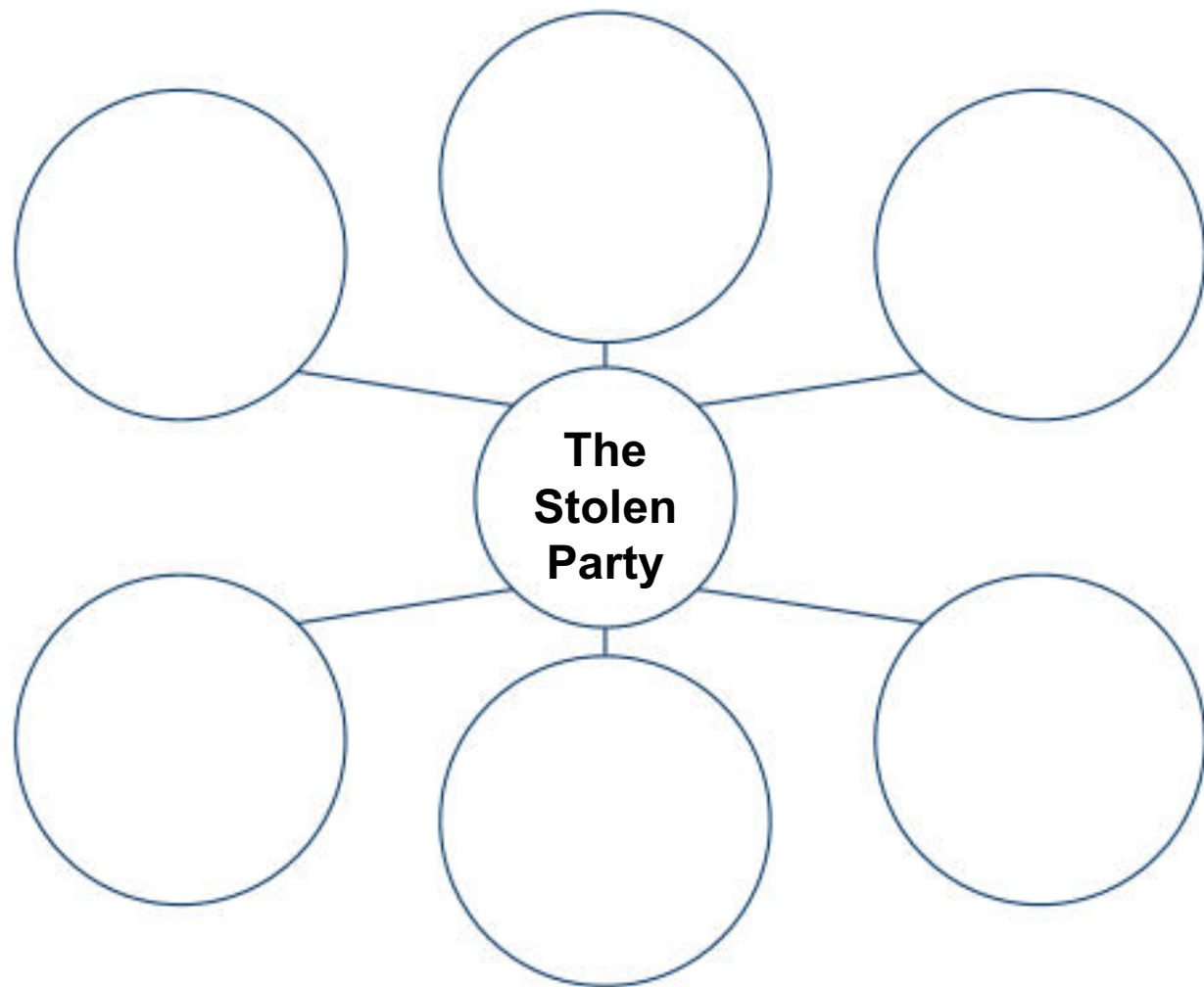




The Stolen Party

Written by: Liliana Heker



WHAT IS A COGNITIVE STRATEGY?

Cognition = the process of knowing or thinking

Strategy = a tool or tactic one uses to solve a problem

Cognitive Strategy a thinking tool

Summarizing



Open Mind

Summarizing

- The basic gist is...
- The key information is...
- In a nutshell, this says that..

Partner A:

Share your summary of the story so far.

Partner B:

Share your summary of the story so far.

Making Connections

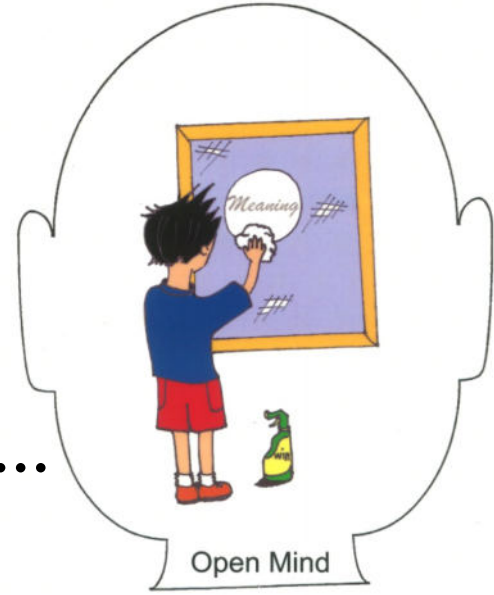


Making Connections

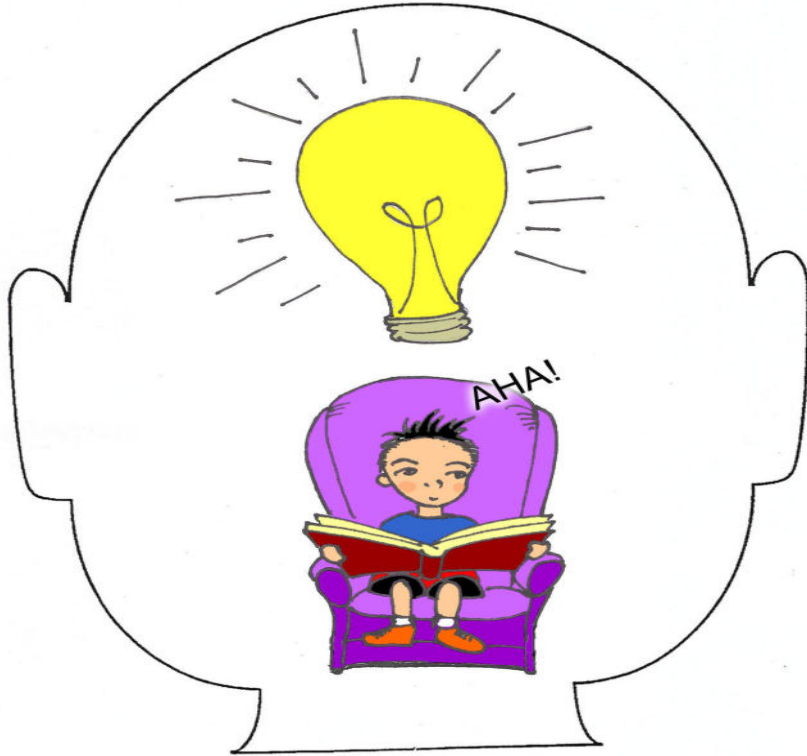
- This reminds me of...
- I experienced this once when...
- I can relate to this because...

Clarifying

- To understand better, I need to know more about...
- Something that is still not clear is...
- I'm guessing that this means _____, but I need to...



Forming Interpretations



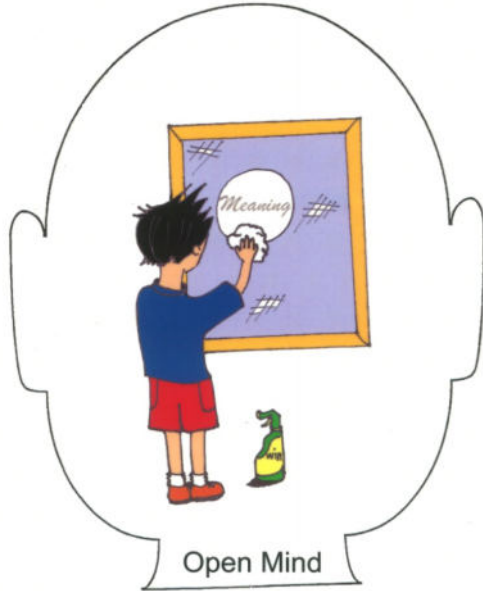
Open Mind

Forming Interpretations

- What this means to me...
- I think this represents...
- The idea I'm getting is...

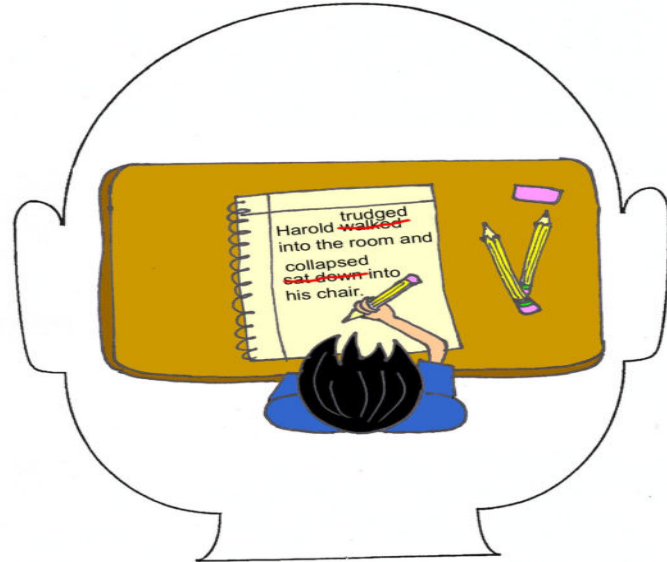
Making Predictions

- I'll bet that...
- I think...
- If _____, then...



Revising Meaning

- At first I thought ____,
but now I.....
- My latest thought about this
is...
- I'm getting a different picture
here because...



Open Mind

Reflecting and Relating

- So, the big idea is...
- A conclusion I'm drawing is...
- This is relevant to my life because...

Reflecting and Relating



Open Mind



The Stolen Party

Written by: Liliana Heker

Table Discussion



Pg 5 - "Except her eyes. Rosaura's eyes had a cold, clear look that fixed itself on Senora Ines's face."

How does this show a shift in Rosaura's character?

Table Discussion

Pg 5 - "As if the slightest change might shatter an infinitely delicate balance."

**What does the author mean by
"delicate balance"?**

THE STOLEN PARTY



Write an EPILOGUE to “The Stolen Party”

- 1. Reread** the end of the story, page 5.
- 2. Write an epilogue:** a section at the end of a story that serves as a conclusion to what has happened. A final or concluding act or event.
- 3. Format:** Google Doc, 1 pg, Double spaced, 12 pt font, Arial
- 4. Include:**
 - a. Characters: Rosaura, Luciana, Senora Ines, Herminia (Rosaura’s Mom)
 - b. Conflict: character vs character, character vs. nature, character vs. supernatural, character vs. society, character vs. technology
 - c. Setting: time, place, environment, background
 - d. Dialogue: dialogue tags, realistic, punctuation, dialect/accents
 - e. Resolution: story comes to a “reasonable” ending - we know all stories do not necessarily end “reasonably!”