

# THE DIGESTIVE SYSTEM



# MAIN ROLES OF THE DIGESTIVE SYSTEM:

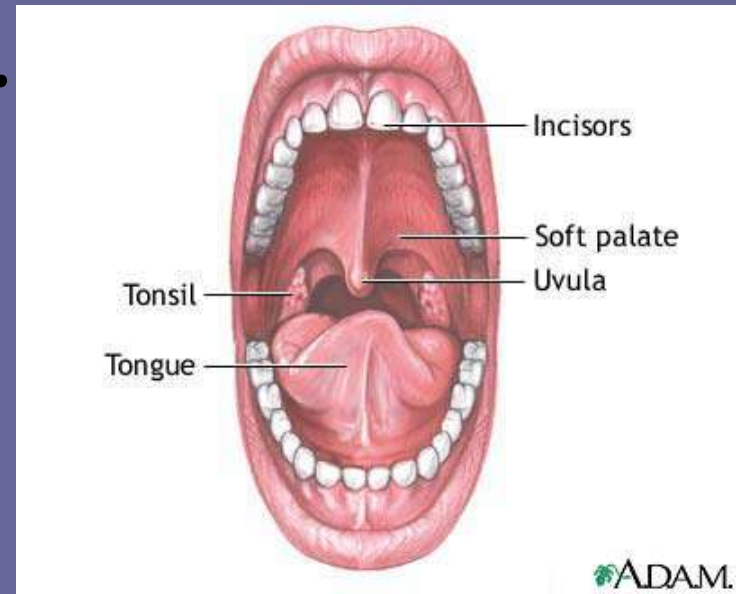
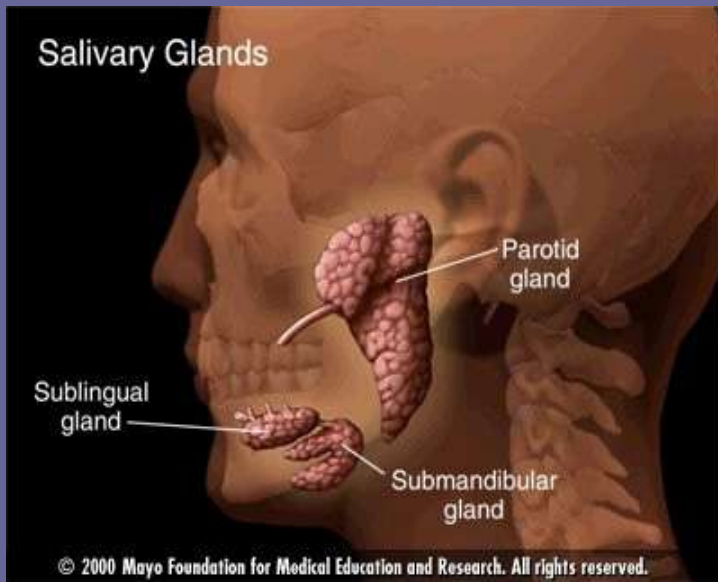
- 1.To breakdown nutrients

- 2.To absorb nutrients

This is necessary for growth and maintenance

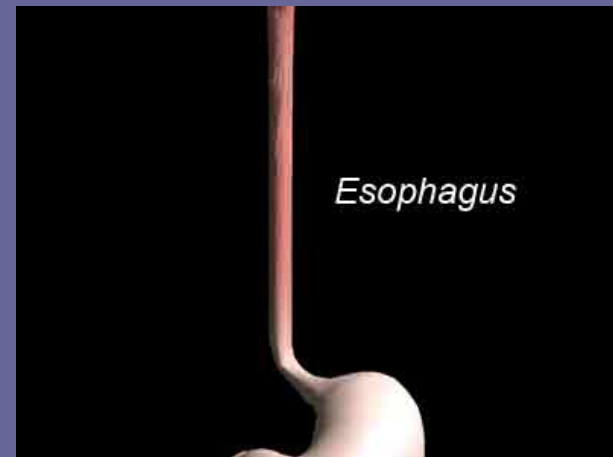
# MOUTH

The mouth begins to break down food into smaller pieces through chemical and mechanical digestion. The teeth aid in mechanical digestion and the salivary glands aid in chemical digestion.

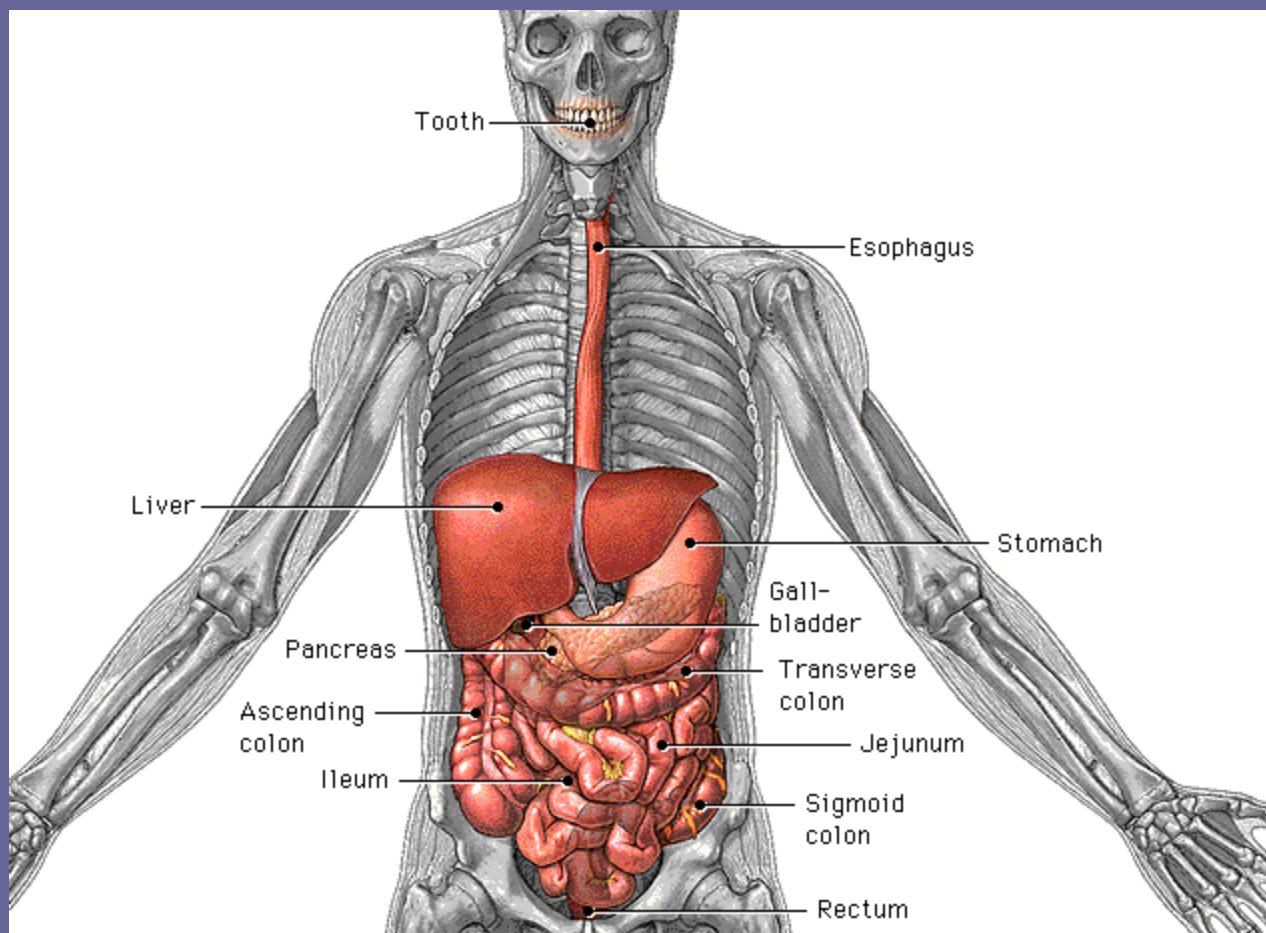


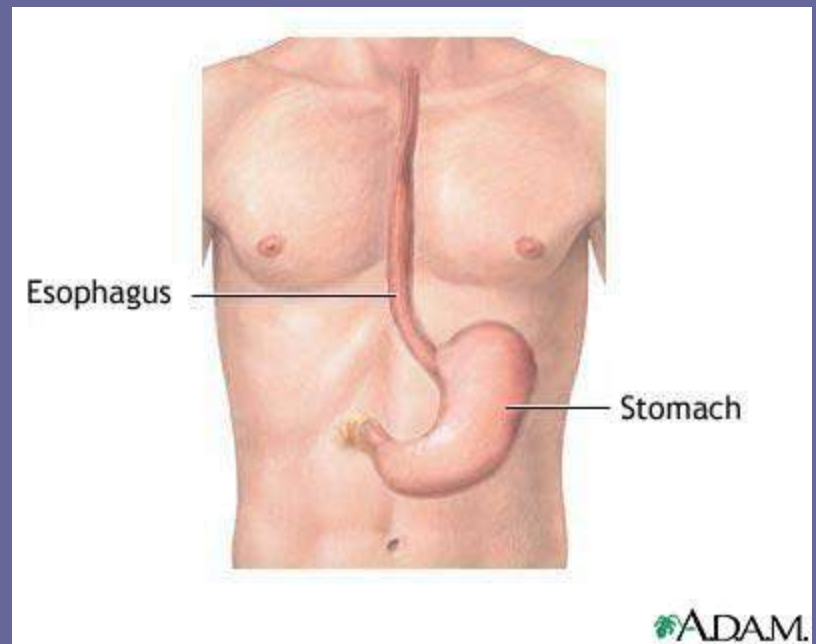
# ESOPHAGUS

- Known as the food tube.
- Lies directly behind the trachea.
- Carries food to the stomach.
- Muscles push the food through the tube through an action called peristalsis.



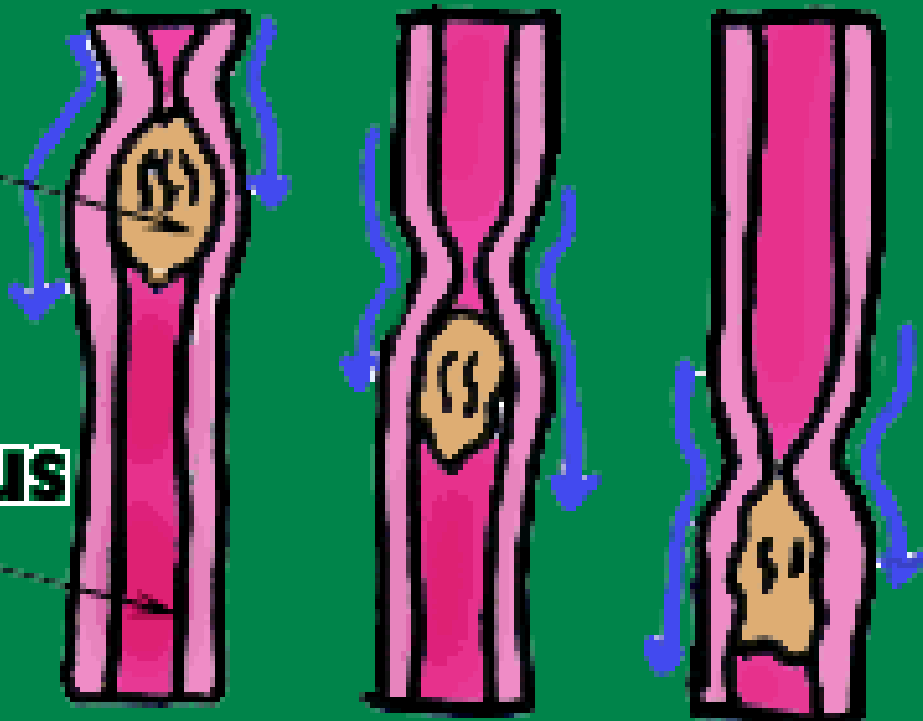






**Food**

**Esophagus**



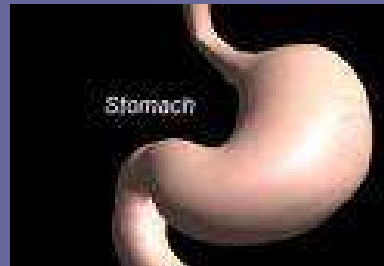


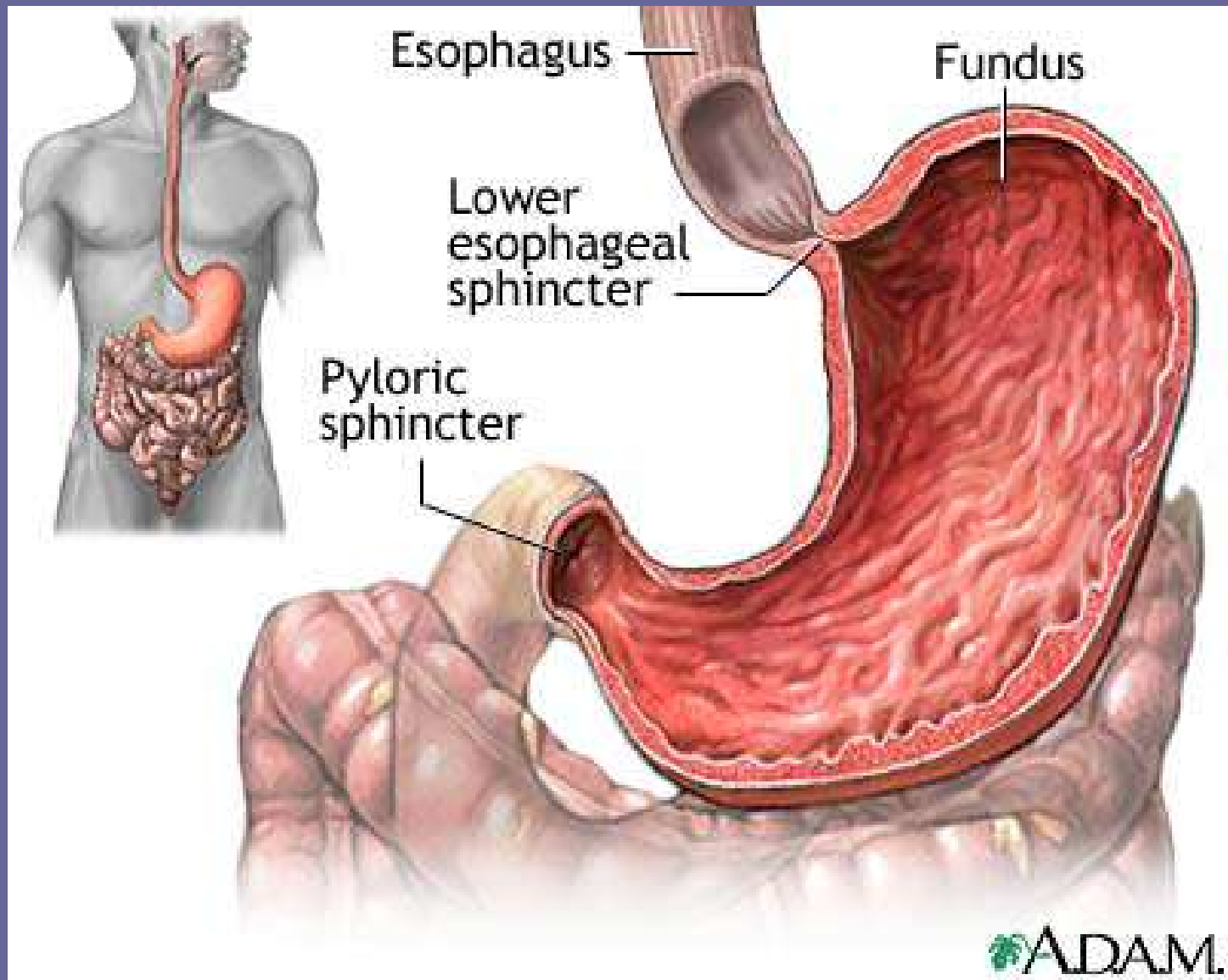
# STOMACH

Both chemical and mechanical digestion take place here just like the mouth.

Mechanical digestion takes place by the muscles churning the food and chemical digestion takes place by the stomach adding acids to the food.

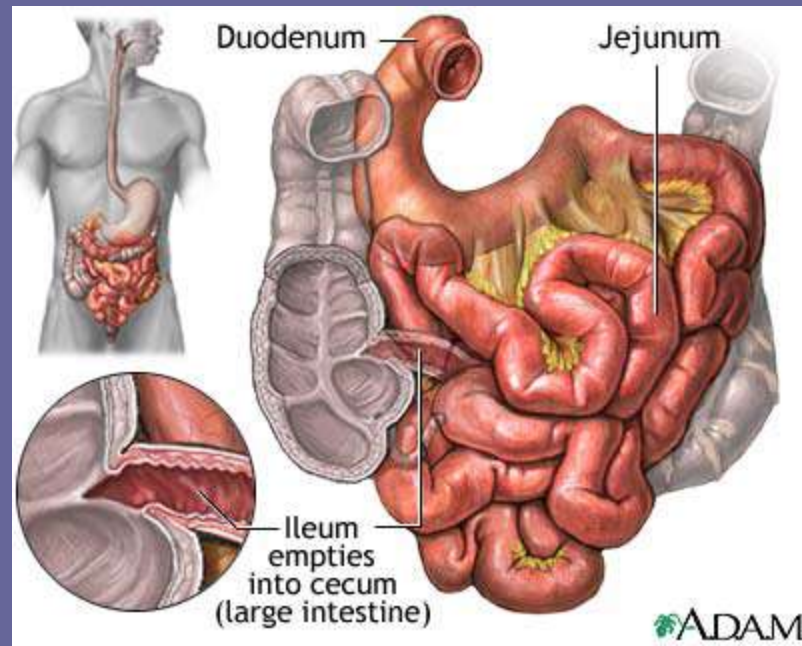
Food stays here about 4-6 hours.

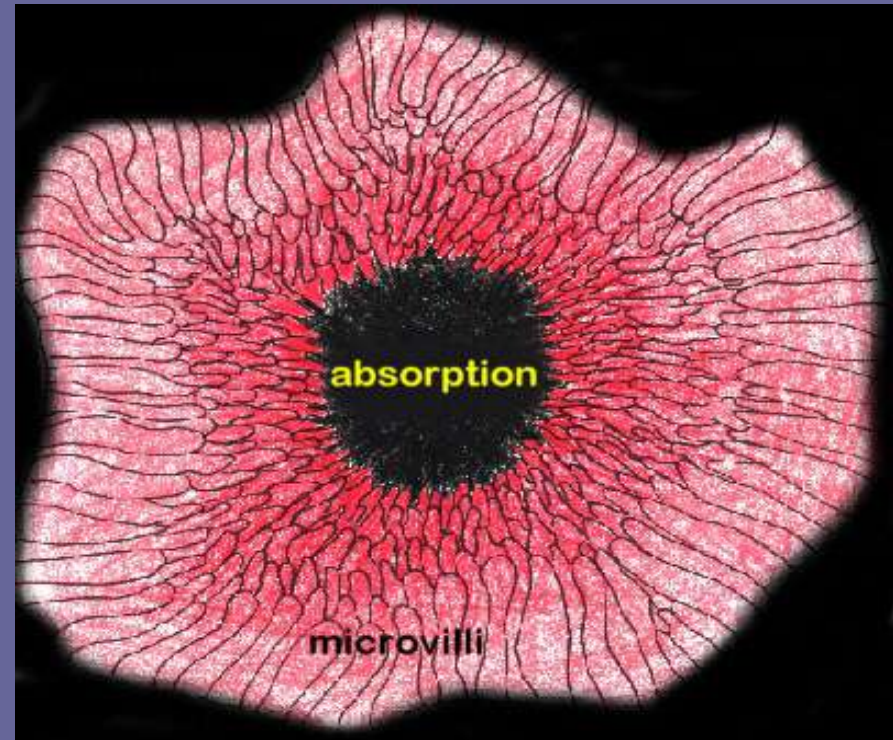
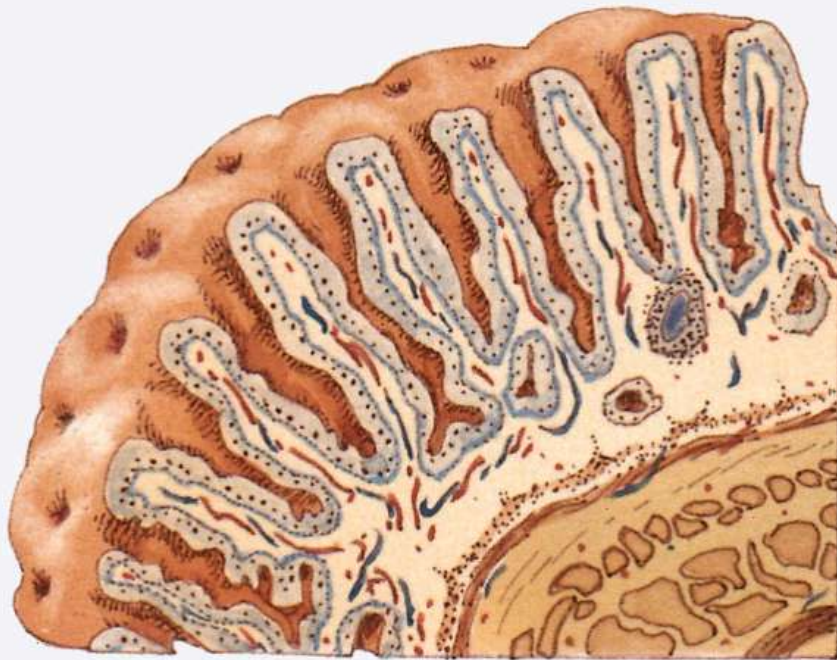




# Small Intestines

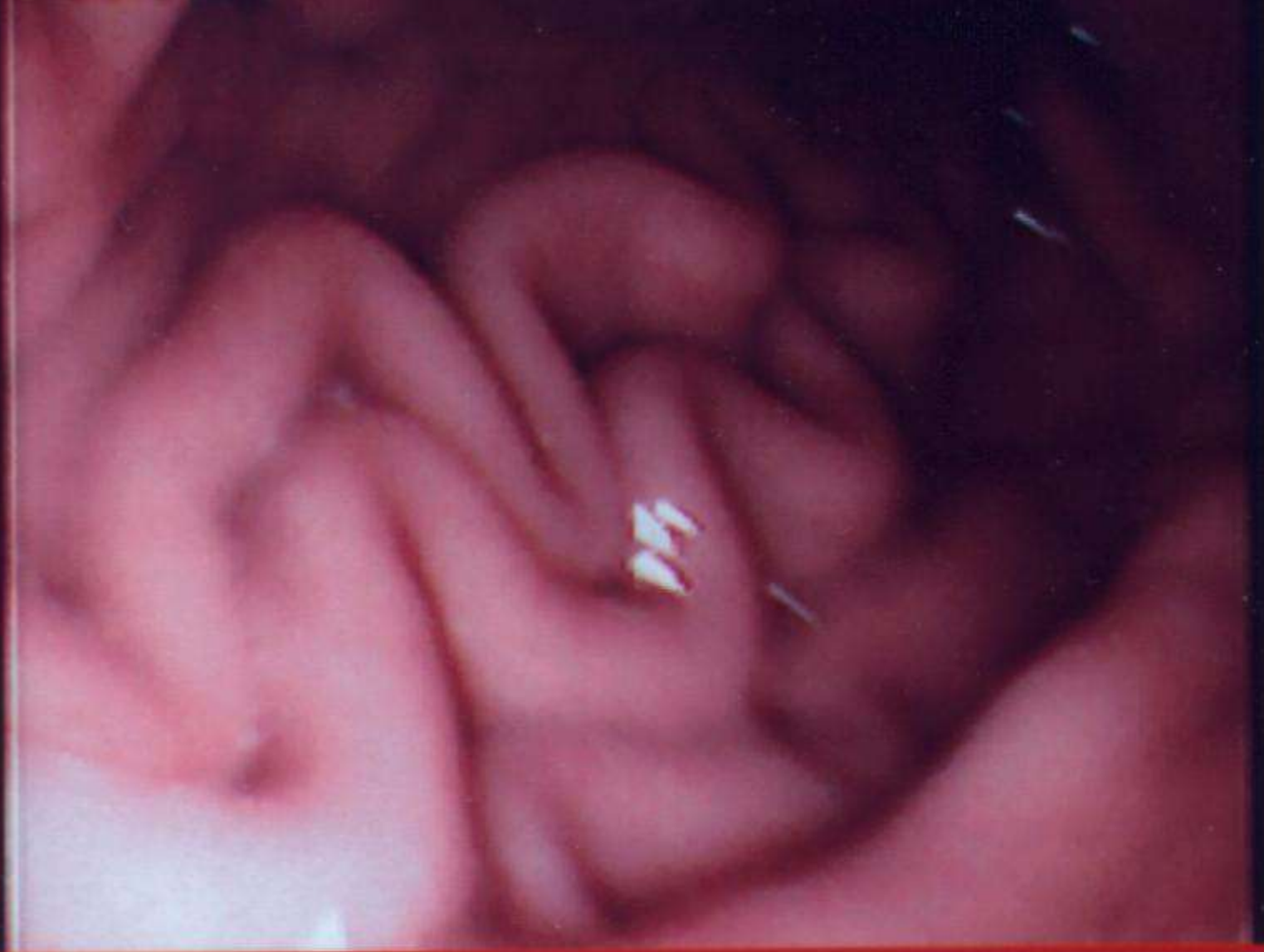
Almost all chemical digestion takes place here. This is also the place where nutrients are absorbed into the blood.





7-27-98

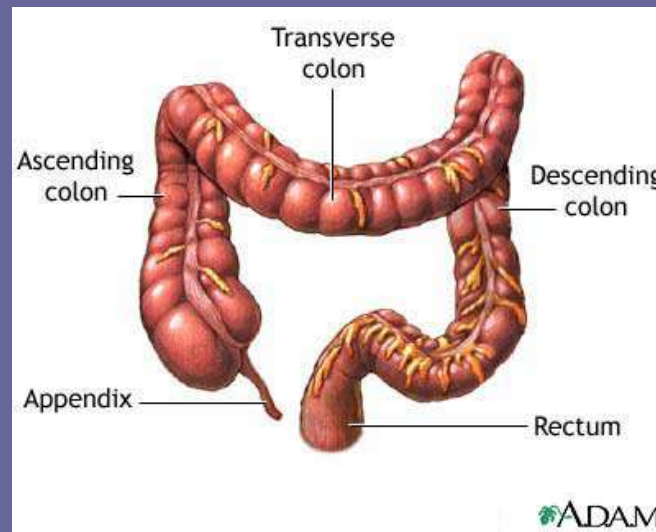
6:56:05

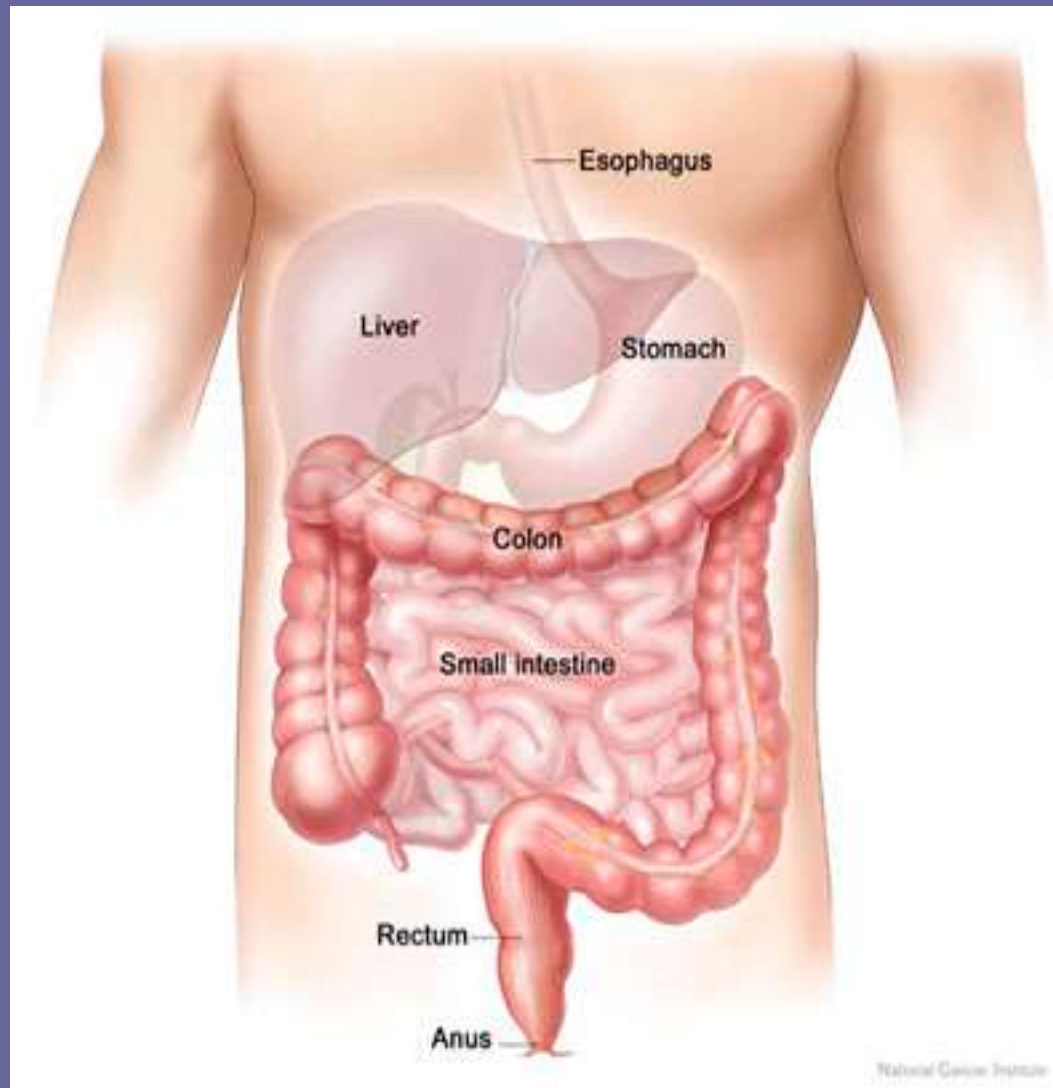




# Large Intestines

- The organ where water is absorbed from food and taken to the bloodstream;
- This organ also prepares remaining food material for elimination from the body.





# Rectum and Anus

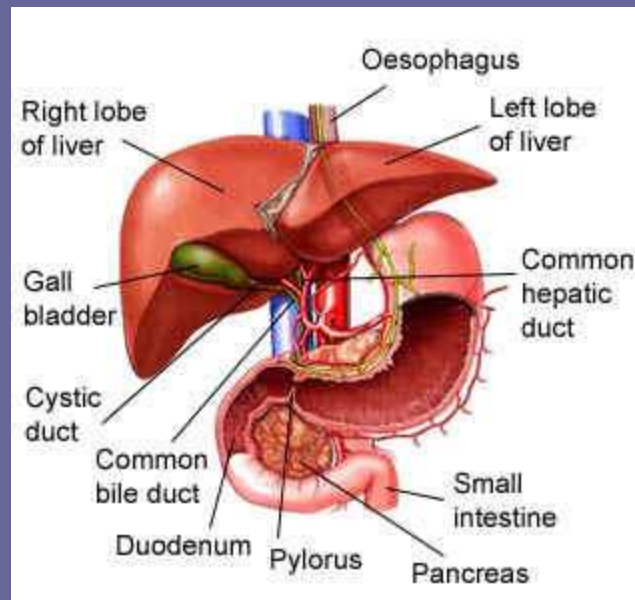
- The rectum is the short tube that stores solid waste until it is eliminated from the body through the anus.





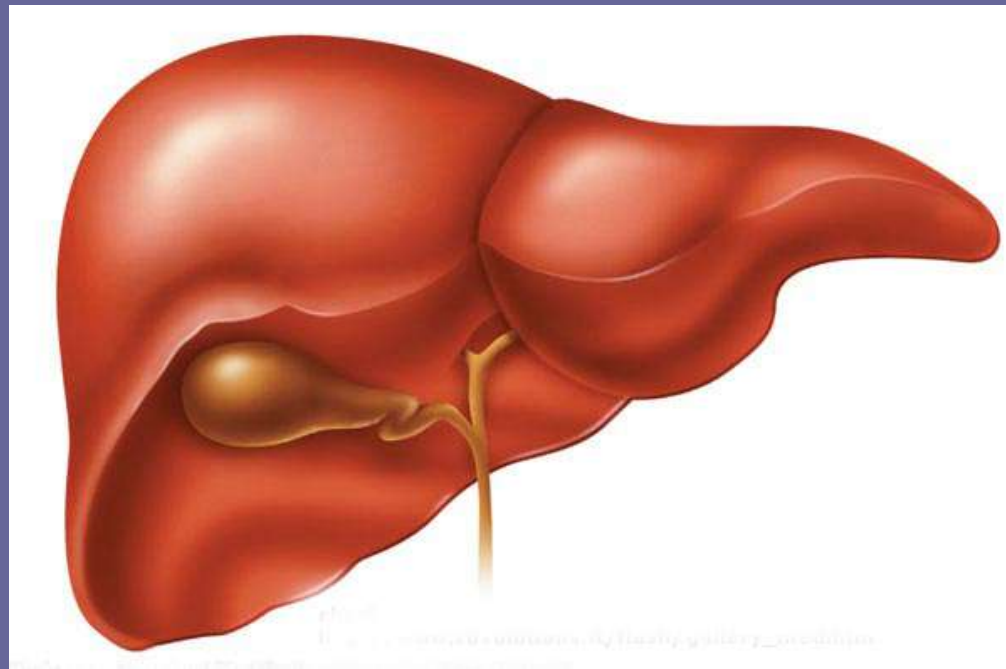
# The Accessory Organs

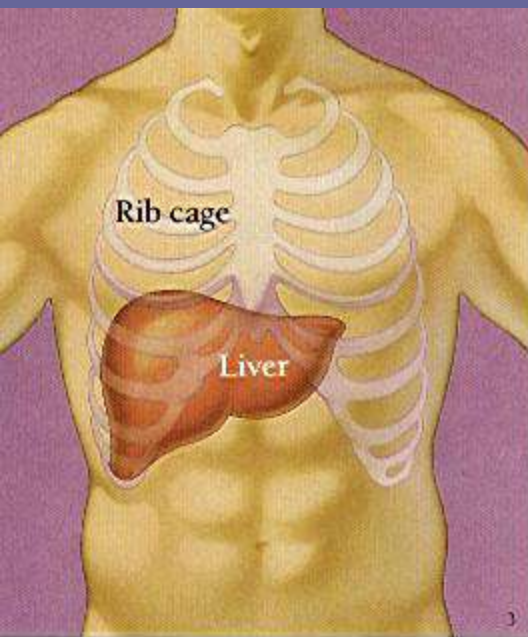
- Liver
- Gall Bladder
- Pancreas



# LIVER

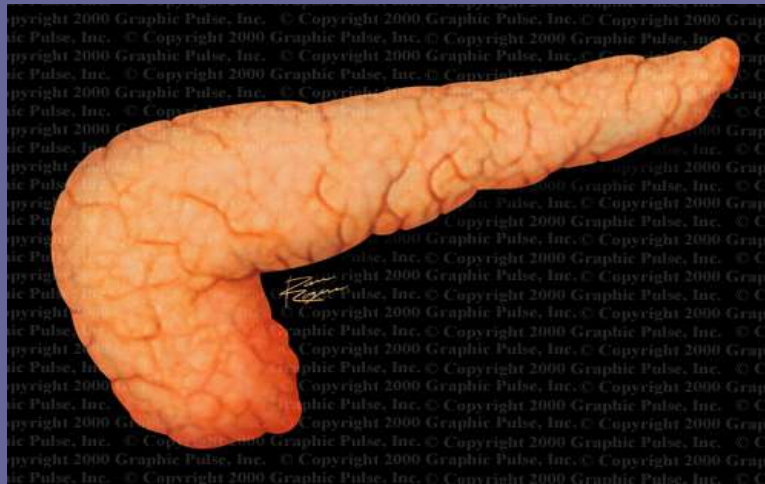
Produces bile which is a chemical that is used by the body to break up fat. Bile is sent to the small intestines to help with chemical digestion.

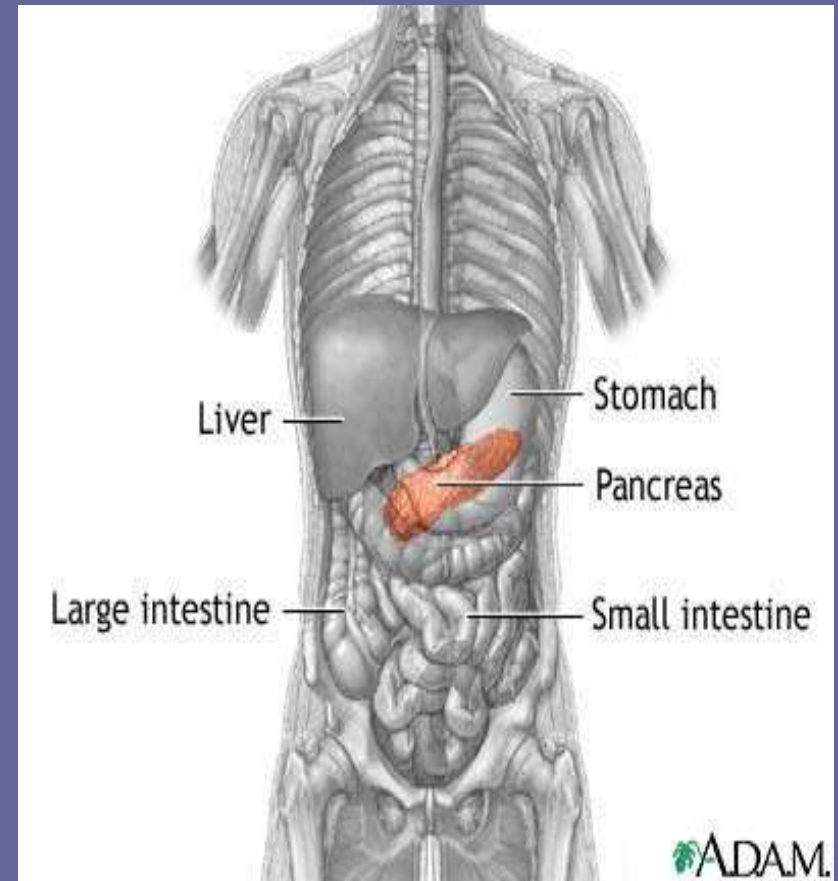
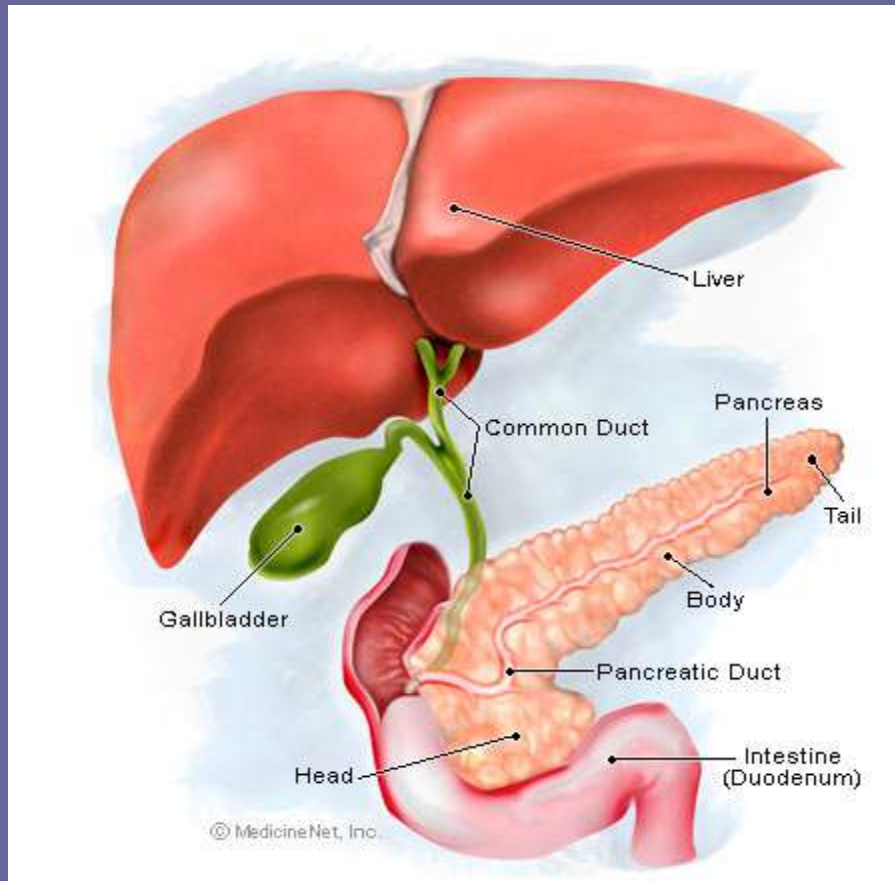




# PANCREAS

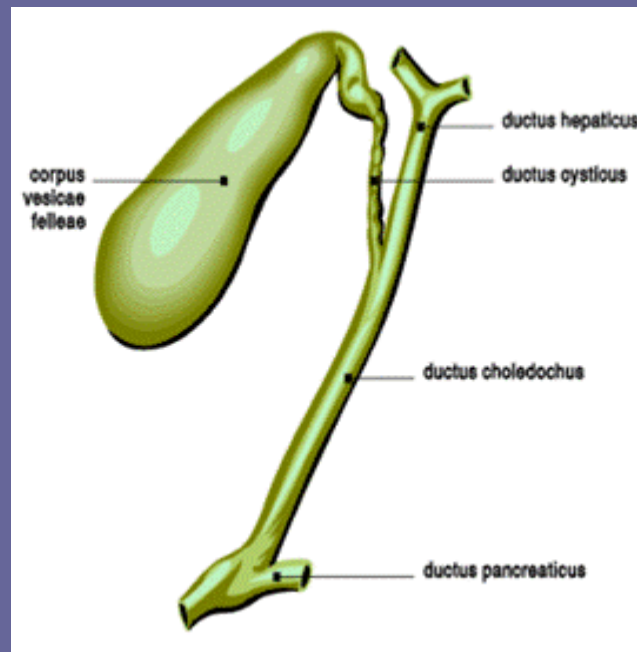
Functions to produce enzymes that break down starches, proteins and fats in the small intestines. Also makes insulin which helps sugar to leave the bloodstream and enter cells.

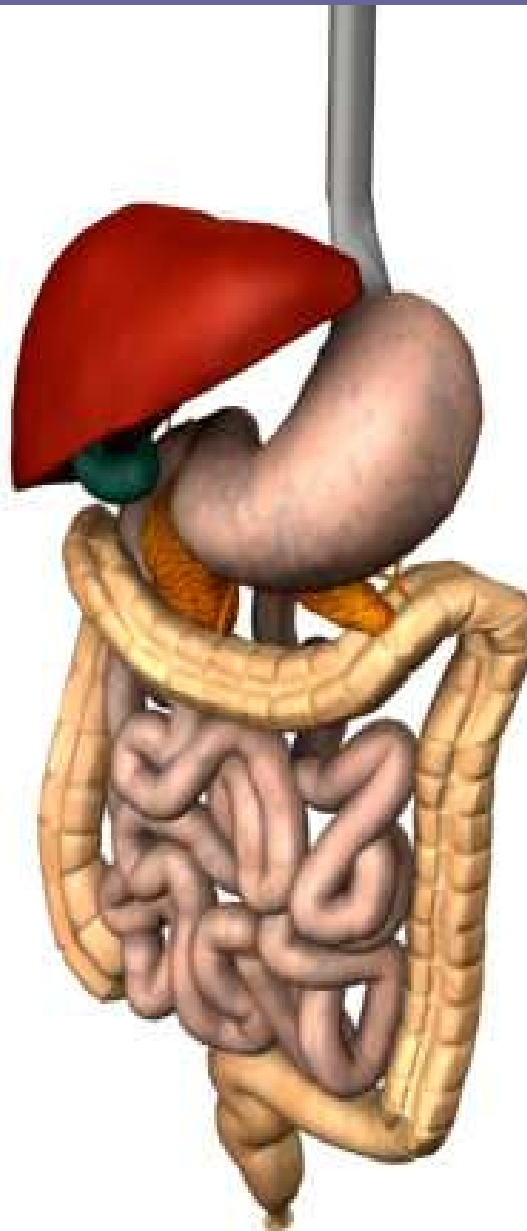




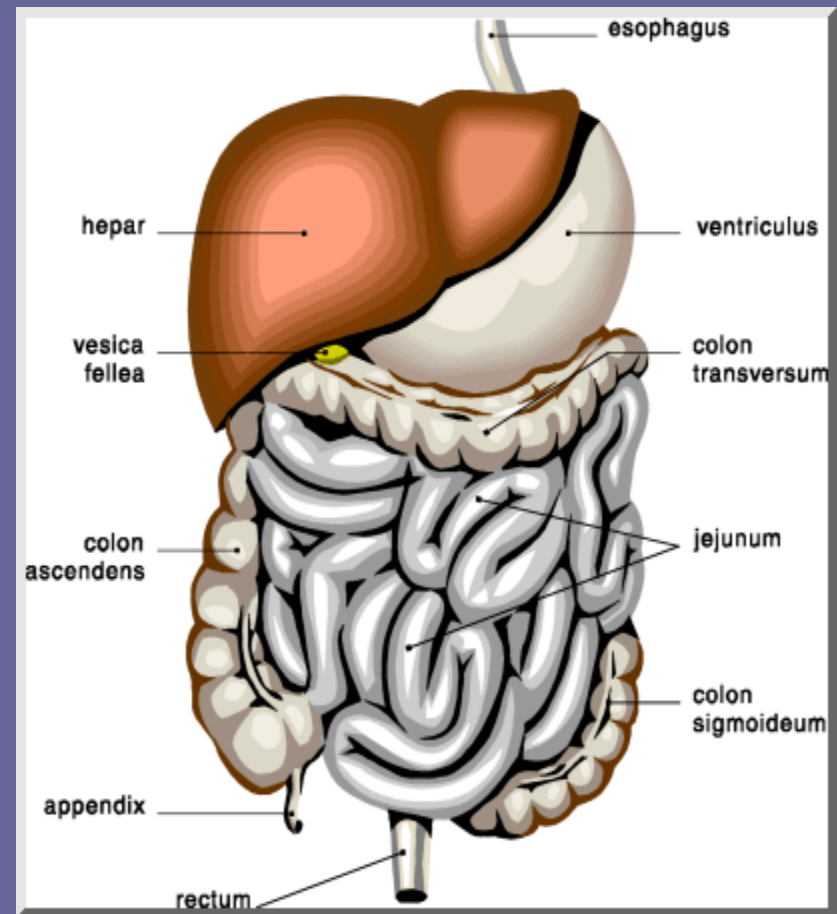
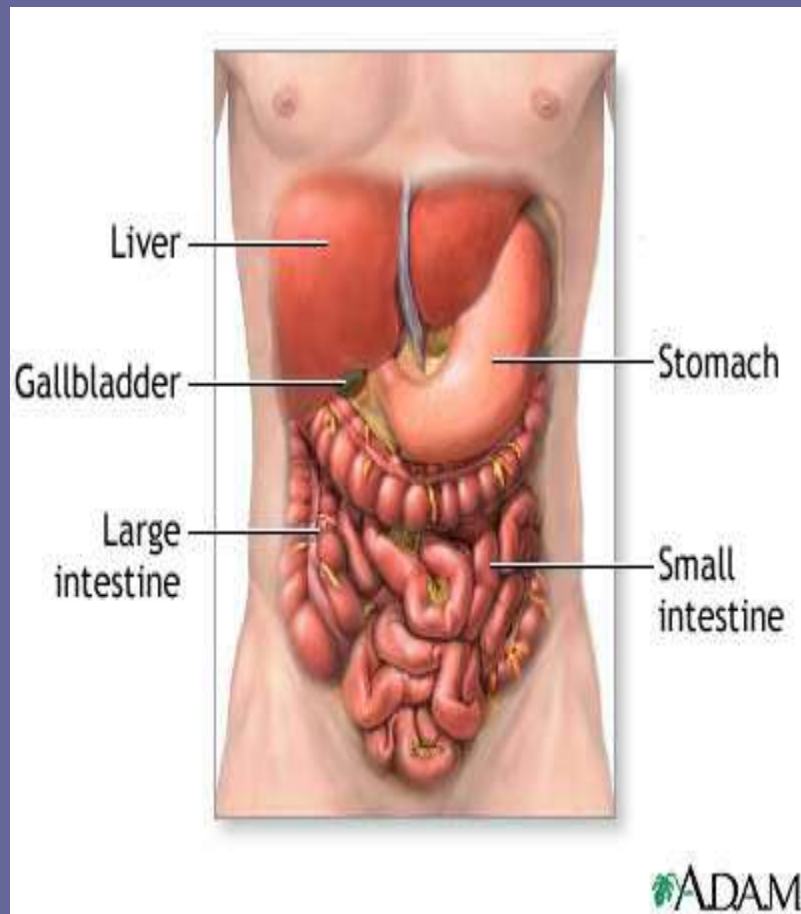
# Gall Bladder

Stores bile for the Liver until it is ready to be used











## The Human Digestive System

