



Art 1: Let's Learn

ELEMENTS OF ART-

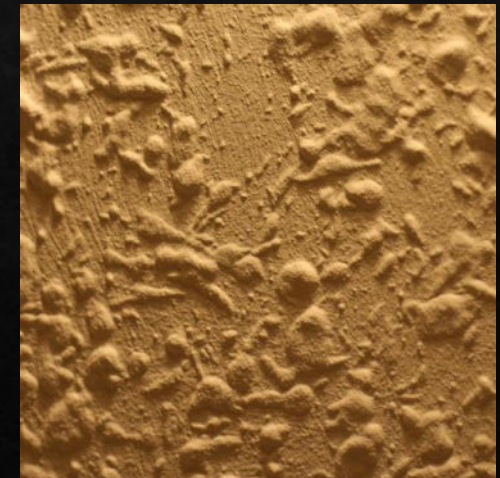
TEXTURE

TEXTURE

◆ **TEXTURE** is defined as the feel of an object's surface; this can be either *real* or *implied* (ex. *fluffy*, *bumpy*, *rough*, *smooth*, etc.)



[This Photo](#) by Unknown Author is licensed under [CC BY](#)



[This Photo](#) by Unknown Author is licensed under [CC BY-SA](#)

THE 2 TYPES OF TEXTURE

REAL TEXTURE: what you can actually feel with your sense of touch



IMPLIED TEXTURE: a visual representation of a texture



Hickory



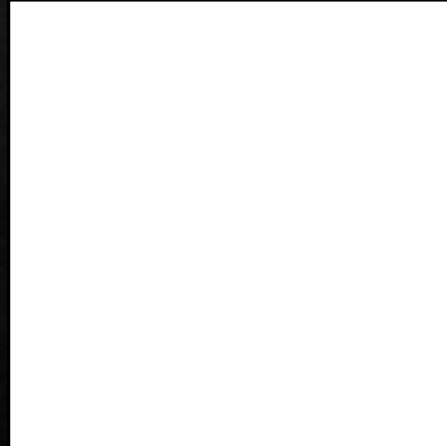
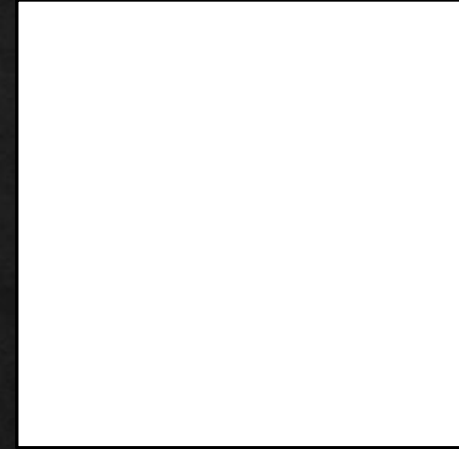
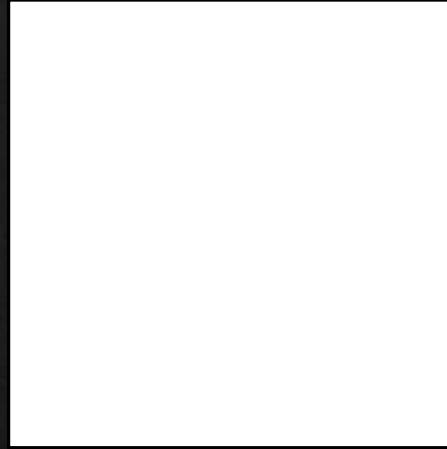
White oak



White birch

MAKING TEXTURES
(IMPLIED)

DRAW 4 SMALL BOXES
TO PRACTICE 4
DIFFERENT TYPES OF
TEXTURES.



TEXTURE 1: WOOD

COMPOSED OF VARIOUS LINES

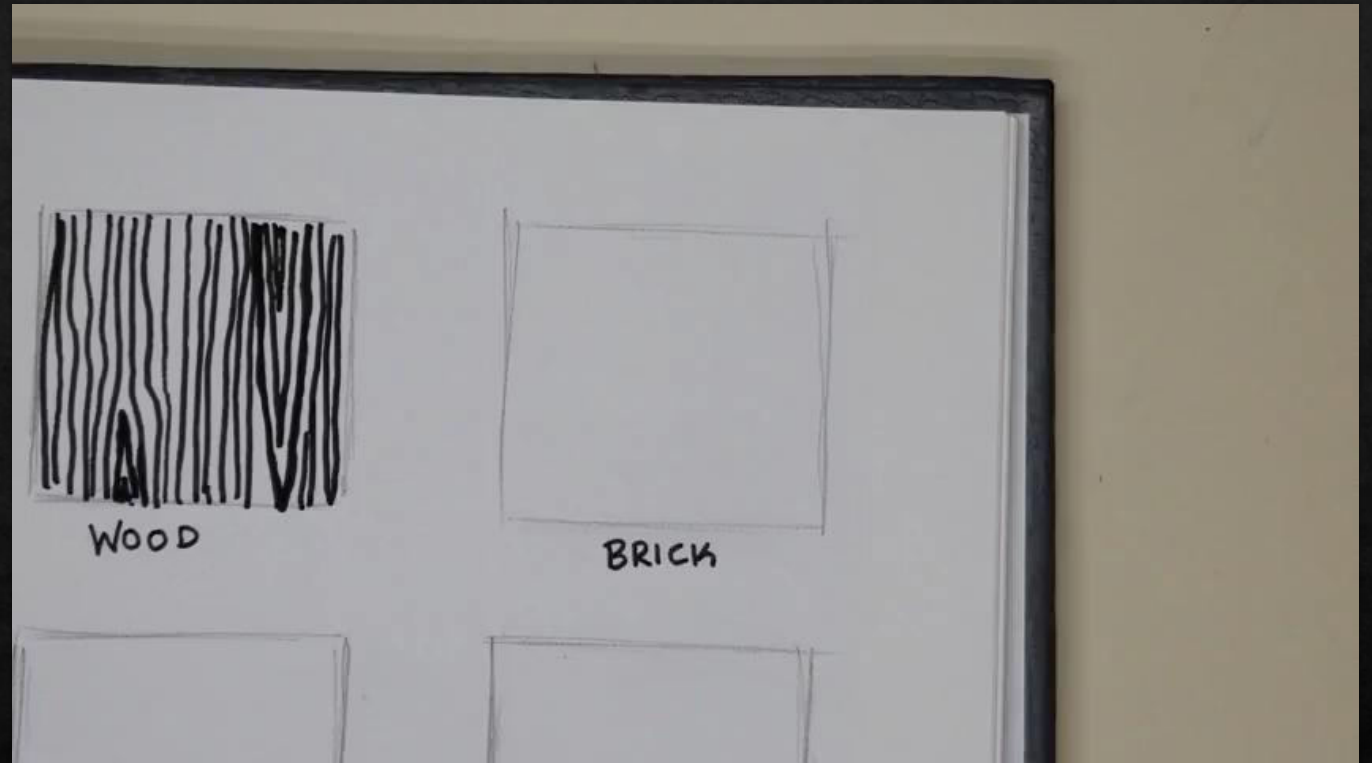
MADE WITH LINE WEIGHT, CURVES,
AND HATCHING



TEXTURE 2: BRICK (ROUGH)

COMPOSED OF ROWS
OF STONES THAT
ALTERNATE EVERY
OTHER LINE

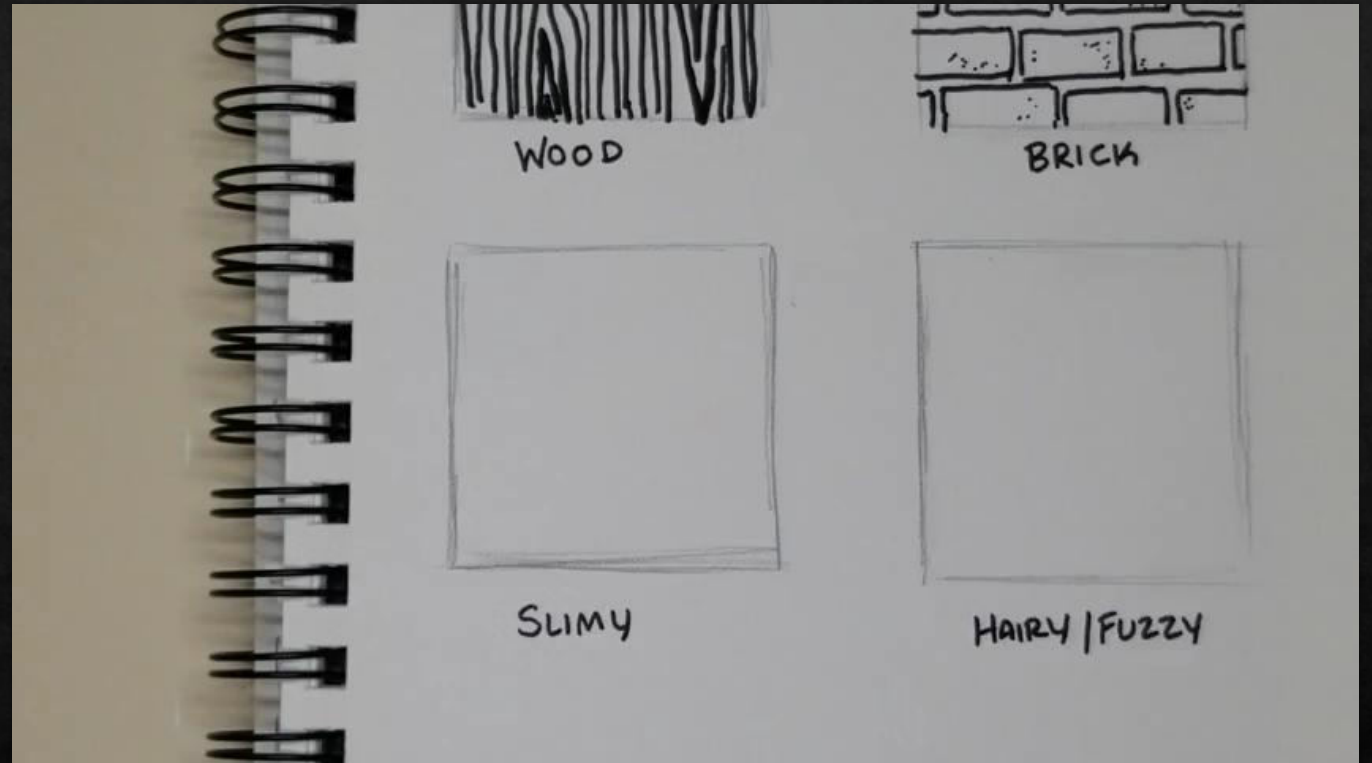
-MADE WITH SHAPES
(RECTANGLES) AND
STIPPLING



TEXTURE 3: SLIMY

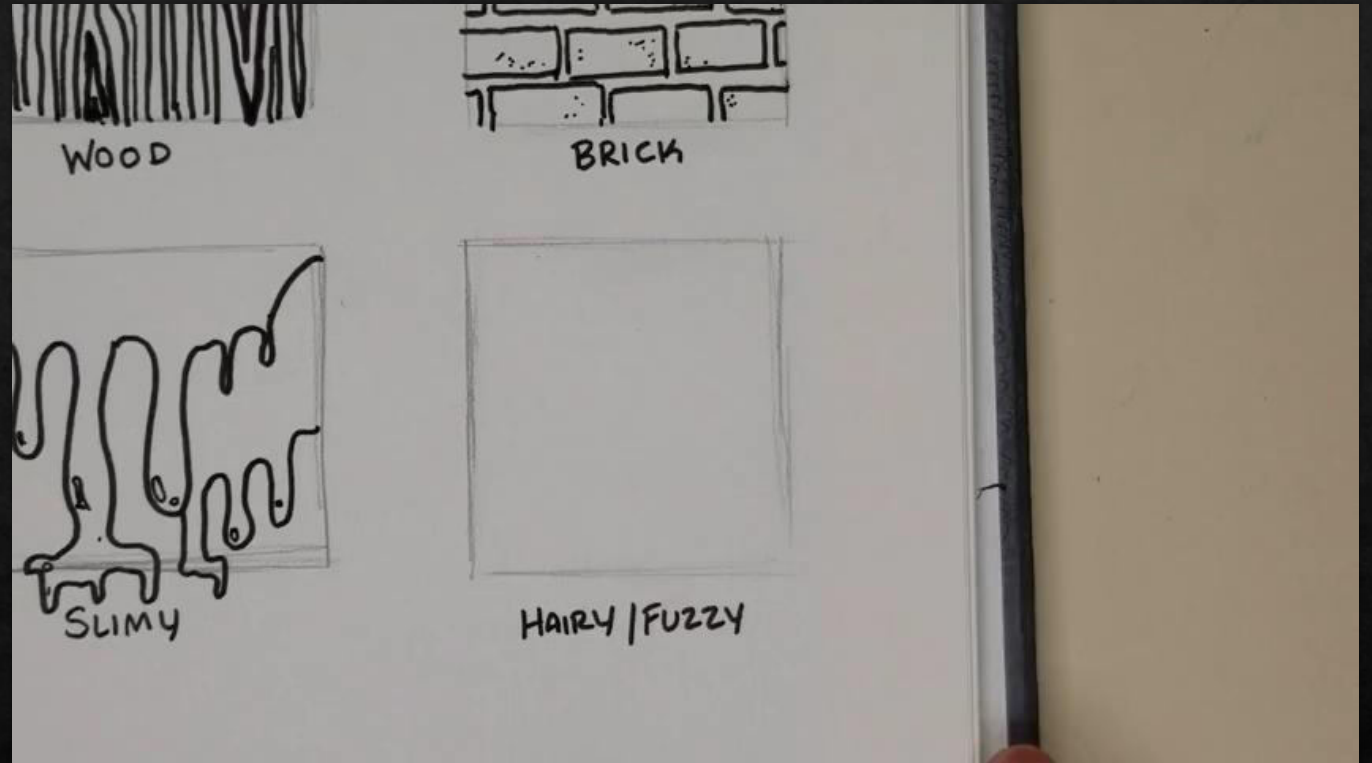
COMPOSED OF LARGE SECTIONS OF
DROOPY LINES

-MADE WITH CURVES; ORGANIC
SHAPES



TEXTURE 4:
FUZZY/HAIRY

COMPOSED OF
INDIVIDUAL STRANDS
MADE WITH HATCHING

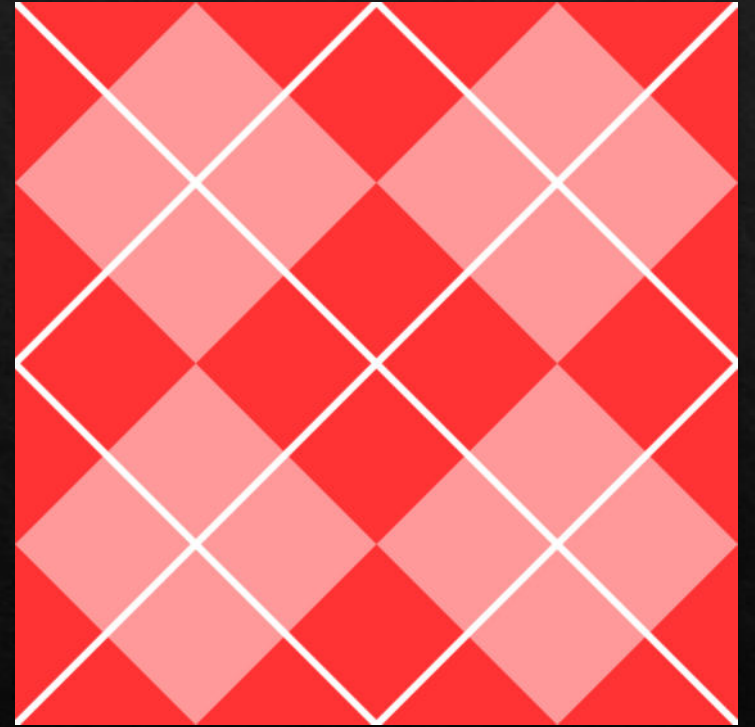


TEXTURE VS. PATTERN

TEXTURES CAN
HAVE PATTERNS,
BUT A PATTERN IS
NOT A TEXTURE!



[This Photo](#) by Unknown Author is licensed under [CC BY](#)



[This Photo](#) by Unknown Author is licensed under [CC BY-SA](#)