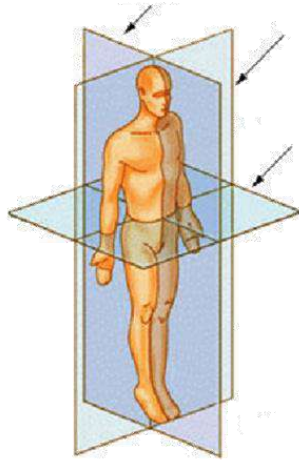


## Test 1 Study Sheet

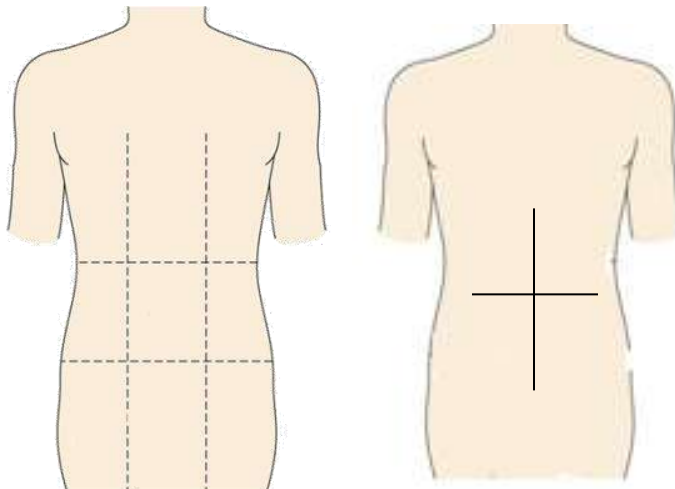
Outline each plane in a different color and label.



Know your body directions

- Dorsal: \_\_\_\_\_
- Ventral: \_\_\_\_\_
- Anterior: \_\_\_\_\_
- Posterior: \_\_\_\_\_
- Lateral: \_\_\_\_\_
- Medial: \_\_\_\_\_
- Cephalic: \_\_\_\_\_
- Caudal: \_\_\_\_\_
- Superior: \_\_\_\_\_
- Inferior: \_\_\_\_\_
- Proximal: \_\_\_\_\_
- Distal: \_\_\_\_\_

Label the following abdominal divisions



## Test 1 Study Sheet

### Know the following terms:

- sign: \_\_\_\_\_
- symptom: \_\_\_\_\_
- syndrome: \_\_\_\_\_
- Diagnosis: \_\_\_\_\_
- Prognosis: \_\_\_\_\_
- Acute disease: \_\_\_\_\_
- Chronic disease: \_\_\_\_\_
- Remission: \_\_\_\_\_
- eponym: \_\_\_\_\_
- Anatomy: \_\_\_\_\_
- Physiology: \_\_\_\_\_
- Cytology: \_\_\_\_\_
- Histology: \_\_\_\_\_

### Define the following prefixes and suffixes

Brady

Brachy

Hypo

Hyper

Tachy

Endo

Anti

Multi

Neo

Micro

Stomy

Rrhea

Megaly

Graphy

Cyte

Ectomy

Algia

Itis

Ologist

Logy

Osis

## Test 1 Study Sheet

**Define these root words and be able to use them in a word**

Leuk/o

Myel/o

Poli/o

Cyt/o

Cyan/o

Hist/o

Erythr/o

Lapar/o

Gastr/o

Cephal/o

My/o

Adip/o

Oste/o

Hepat/o

Cardi/o

**Be able to identify the parts of a medical term as prefix, root, and suffix**

- Remember to start at the suffix and work your way back
- Every word has a suffix
- Not every word has a prefix or root word
- Most have a root word

## More Review

1. Complete the handout (above 2 pages). Answers should be in your notes.

For the following do 5 of each number and repeat twice.

### 2. Word Break Down

- pick a word from the glossary that can be broken down into word parts. Write the word and the definition from the glossary. Then break the word into parts, mark each part as prefix, root, or suffix and define each part.

Ex: Pericardium – the surrounding of the heart

Prefix: peri: before or surrounding

Root: cardi/o: heart

Suffix: -um: pertaining to, located in, singular noun

### 3. Anatomical Directional Terms

- Write a sentence using the directional terms (like we did with the flash cards in class).

Use this format “ The [body part #1] is (directional term) to the [body part #2] because [body part #1] is \_\_\_\_\_ to [body part #2].”

4. Write a medical term using the word parts in your review. Define the term.