



# Superintendent's Updates

Randolph County Schools' purpose is to prepare today's learners for tomorrow's demands.

October 15, 2024



# School Data





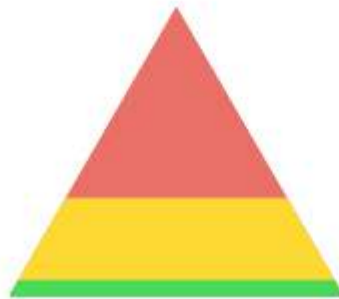
# Math Diagnostic Window 1



## Criterion Referenced

Students Assessed/Total: 2,262/2,463

### Overall Placement



- **At Risk for Tier 3**  
44%
- **Tier 2**  
46%
- **Tier 1**  
10%

### Placement By Domain





# Math Diagnostic Window 1



School	Overall Grade-Level Placement	Students Assessed/Total
BEVERLY ELEMENTARY	<div><div>7%</div><div>64%</div><div>29%</div></div>	199/199
COALTON ELEMENTARY	<div><div>8%</div><div>48%</div><div>44%</div></div>	136/136
ELKINS HIGH SCHOOL	<div><div>100%</div></div>	2/110
ELKINS MIDDLE SCHOOL	<div><div>11%</div><div>27%</div><div>62%</div></div>	594/614
ELKINS THIRD WARD ELEMENTARY	<div><div>14%</div><div>59%</div><div>27%</div></div>	266/282
GEORGE WARD ELEMENTARY	<div><div>5%</div><div>53%</div><div>41%</div></div>	273/274
HARMAN ELEMENTARY	<div><div>5%</div><div>36%</div><div>58%</div></div>	77/103



# Math Diagnostic Window 1



School	Overall Grade-Level Placement	Students Assessed/Total
JENNINGS RANDOLPH ELEMENTARY	<div><div>15%</div><div>60%</div><div>25%</div></div>	185/190
MIDLAND ELEMENTARY	<div><div>15%</div><div>58%</div><div>27%</div></div>	142/142
NORTH ELEMENTARY	<div><div>9%</div><div>61%</div><div>31%</div></div>	183/185
PICKENS SCHOOL	<div><div>5%</div><div>73%</div><div>23%</div></div>	22/29
TYGARTS VALLEY MIDDLE HIGH SCHOOL	<div><div>5%</div><div>22%</div><div>73%</div></div>	185/201





# Reading Diagnostic Window 1



## Criterion Referenced

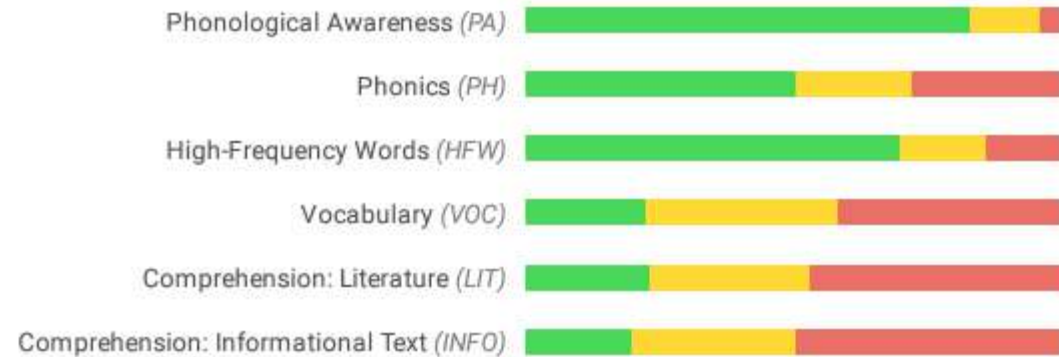
Students Assessed/Total: 2,277/2,394

### Overall Placement



- At Risk for Tier 3  
46%
- Tier 2  
36%
- Tier 1  
18%

### Placement By Domain





# Reading Diagnostic Window 1



School	Overall Grade-Level Placement	Students Assessed/Total
BEVERLY ELEMENTARY	<div><div>17%</div><div>49%</div><div>34%</div></div>	198/199
COALTON ELEMENTARY	<div><div>10%</div><div>43%</div><div>46%</div></div>	136/136
ELKINS HIGH SCHOOL	<div><div>100%</div></div>	2/57
ELKINS MIDDLE SCHOOL	<div><div>20%</div><div>17%</div><div>63%</div></div>	581/614
ELKINS THIRD WARD ELEMENTARY	<div><div>24%</div><div>50%</div><div>26%</div></div>	265/282
GEORGE WARD ELEMENTARY	<div><div>11%</div><div>47%</div><div>42%</div></div>	273/274
HARMAN ELEMENTARY	<div><div>8%</div><div>29%</div><div>63%</div></div>	102/103

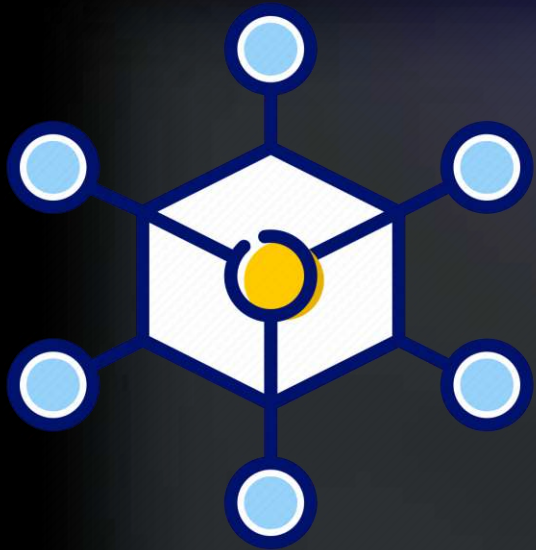


# Reading Diagnostic Window 1



School	Overall Grade-Level Placement	Students Assessed/Total
JENNINGS RANDOLPH ELEMENTARY	<div><div>22%</div><div>49%</div><div>29%</div></div>	185/190
MIDLAND ELEMENTARY	<div><div>30%</div><div>44%</div><div>26%</div></div>	142/142
NORTH ELEMENTARY	<div><div>19%</div><div>54%</div><div>28%</div></div>	183/185
PICKENS SCHOOL	<div><div>32%</div><div>39%</div><div>29%</div></div>	28/29
TYGARTS VALLEY MIDDLE HIGH SCHOOL	<div><div>9%</div><div>15%</div><div>77%</div></div>	184/185





# Central Office



# RCS Board Office



LEVY					COVID	COVID	COVID	COVID		
Hewitt	Hewitt	Devono	Devono	Schmidlen	Schmidlen	Schmidlen	Schmidlen	Schmidlen	Dilly	Dilly
2016	2017	2018	2019	2020	2021	2022	2023	2024	2025	2026
8	8	8	9	9	8.5	9.5	10	8.5	8.5	





# Central Office



Superintendent  
Secondary Curriculum

County Funded



Director  
Facilities

- ★ Transportation
- ★ School Safety
- ALC Principal

County Funded



Director  
Human  
Resources  
Benefits  
Coordinator  
Certification

County Funded



Director  
Special  
Education  
Testing  
Coordinator



County Funded



Director  
Elementary  
Education  
Professional  
Development  
Federal Programs



Federal Funded



Director  
PreK



Child Nutrition

County Funded/  
Program Funded



Director  
Attendance  
Technology  
WVEIS



★

County Funded



Director  
Career &  
Technical  
Education (CTE)  
Adult Basic  
Education  
Options  
Pathway  
Principal RCTC



County Funded/  
Federal Funded



Chief  
Financial  
Officer



County Funded

## Compliance and Reporting



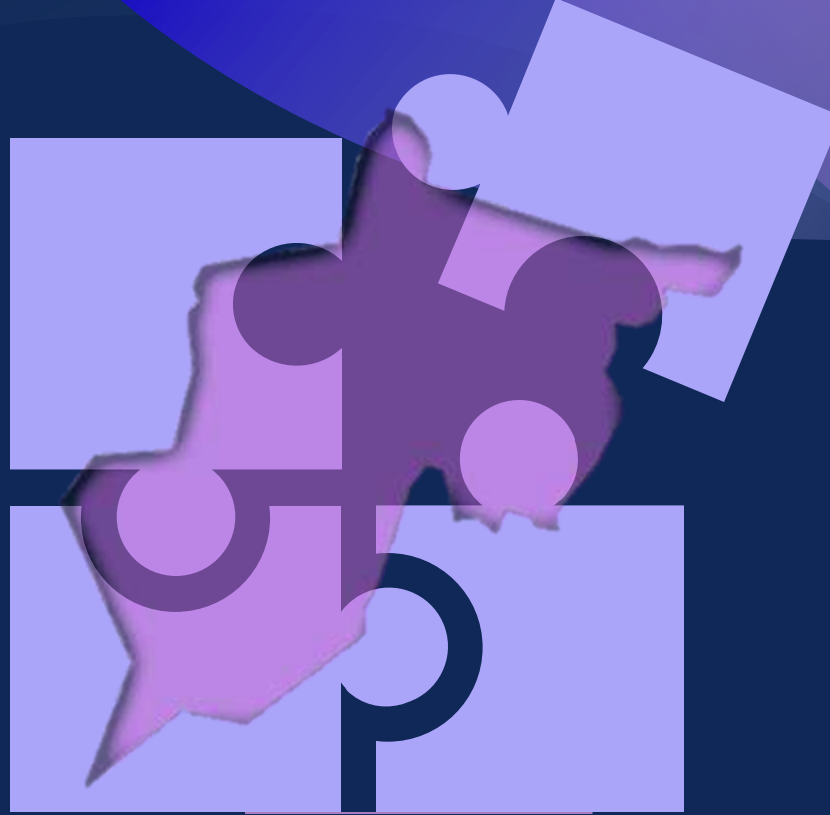


# EMS Roof



\$ 3,354.67

NOTICE OF NON-COMPLIANCE WITH PROJECT REQUIREMENTS



# RANDOLPH COUNTY SCHOOLS REORGANIZATION PLAN

2024-2029

Economies of Scale

Building Utilization  
PURPOSE

Cost Avoidance







# RCS Funding Formula



## Jennings Randolph

210 Student Enrollment  
**18** Professional  
 $210 \div 13.25 = 15.9$  (Funding)



## Coalton

157 Student Enrollment  
**14** Professional  
 $157 \div 13.25 = 11.9$  (Funding)



## George Ward

315 Student Enrollment  
**26** Professional  
 $315 \div 13.25 = 23.8$  (Funding)



## Third Ward

316 Student Enrollment  
**25** Professional  
 $316 \div 13.25 = 23.9$  (Funding)



## Harman

105 Student Enrollment  
**13** Professional  
 $105 \div 13.25 = 7.9$  (Funding)



## Tygarts Valley Middle/High

398 Student Enrollment  
**37** Professional  
 $398 \div 13.25 = 30.0$  (Funding)



## Midland

164 Student Enrollment  
**14** Professional  
 $164 \div 13.25 = 12.4$  (Funding)



## Pickens

29 Student Enrollment  
**5** Professional  
 $29 \div 13.25 = 2.2$  (Funding)



## Elkins Middle

616 Student Enrollment  
46 Professional  
 $616 \div 13.25 = 46.5$  (Funding)



## North

201 Student Enrollment  
**18** Professional  
 $201 \div 13.25 = 15.2$  (Funding)



## Beverly

226 Student Enrollment  
**19** Professional  
 $226 \div 13.25 = 17.1$  (Funding)

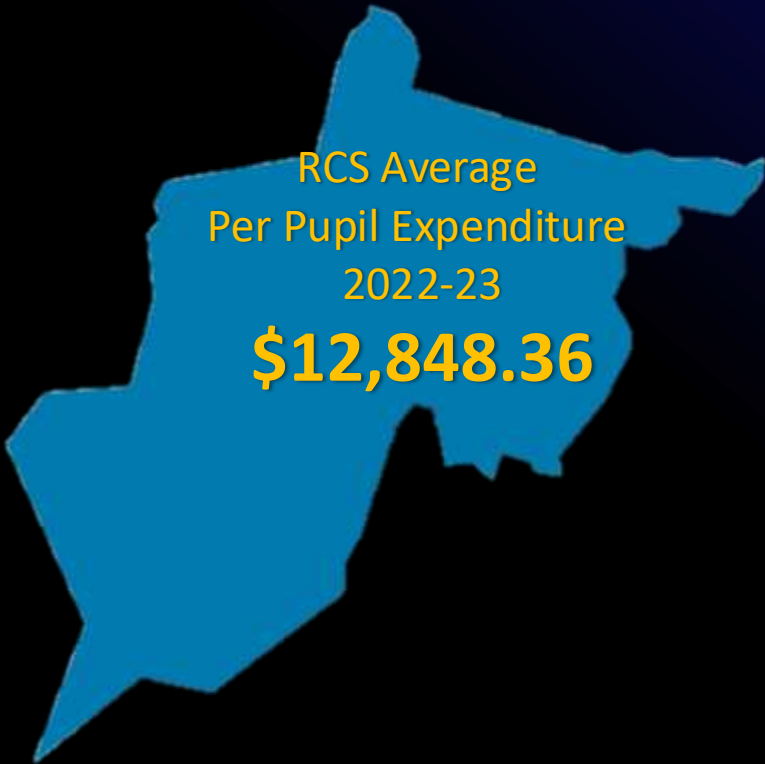


## Elkins High

748 Student Enrollment  
51 Professional  
 $748 \div 13.25 = 56.5$  (Funding)



# Per Pupil Expenditures 2022-23



\$22,387.49	PICKENS ELEMENTARY/HIGH SCHOOL
\$16,214.65	HARMAN ELEMENTARY/HIGH SCHOOL
\$15,725.88	RANDOLPH COUNTY ALTERNATIVE CENTER
\$15,021.97	MIDLAND ELEMENTARY SCHOOL
\$13,671.79	ELKINS THIRD WARD ELEMENTARY SCHOOL
\$13,642.73	COALTON ELEMENTARY SCHOOL
\$13,528.86	NORTH ELEMENTARY SCHOOL
\$13,352.33	JENNINGS RANDOLPH ELEMENTARY SCHOOL
\$13,194.90	BEVERLY ELEMENTARY SCHOOL
\$13,102.29	TYGARTS VALLEY MIDDLE/HIGH SCHOOL
\$12,692.55	GEORGE WARD ELEMENTARY SCHOOL
\$12,110.04	ELKINS MIDDLE SCHOOL
\$10,857.24	ELKINS HIGH SCHOOL



# Building Utilization



	2020	Current
Elkins HS	71%	67%
Harman	42%	27%
Pickens	16%	14%
Tygarts Valley	53%	47%
Elkins MS	60%	61%
Beverly	79%	66%
Coalton	39%	42%
George Ward	79%	72%
Jennings	81%	65%
Midland	73%	50%
North	70%	62%
Third Ward	91%	91%

Desired Utilization is 85%.

# YEAR 1: 2024-25

- 2025-26 Harman K-12 Closure
  - (Complete by December 2024)
- 2025-26 Pickens K-12 Closure
  - (Complete by December 2024)
- Tygarts Valley SBA Application (Middle School Gymnasium & Classrooms)





# HARMAN SCHOOL K-12 OPTIONS



RCS Virtual  
School



Midland  
Elementary  
School



Elkins  
Middle  
School



Elkins  
High  
School



Tucker  
County  
Schools



Harman  
Community  
Based  
School







# PICKENS SCHOOL K-12 OPTIONS



RCS Virtual  
School



George  
Ward  
Elementary  
School



Tygarts  
Valley  
Middle/  
High  
School



Upshur  
County  
Schools



Pickens  
Community  
Based  
School



## YEAR 2: 2025-26

- 2026-27 Elementary Closure
  - (Complete process by December 2025)
- Tygarts Valley Project Phase 1 (Middle School Gymnasium & Classrooms)
- May 2026 Bond Proposal - School Consolidation
- Elementary School Rezoning take effect 2026-27 based on school closure



## YEAR 3: 2026-27

- Tygarts Valley Project Phase 2 (Middle School Gymnasium & Classrooms)
- August 2026 - Elementary School Construction Begins





# GEORGE WARD ELEMENTARY PK-4



George Ward  
School  
5<sup>th</sup> Grade



Tygarts Valley  
Middle/High  
School  
6-12



## YEAR 4: 2027-28

- July 2026 - Elementary School Construction Continues
- Other Bond Call Construction Begins





## YEAR 5: 2028-29

- July 2028 - Elementary School Construction Concludes
- Fall 2028 Students move into new elementary schools
- December 2028 All Construction is completed.





# MIDLAND ELEMENTARY



Beverly  
Elementary  
School



Jennings  
Randolph  
Elementary  
School



Harman  
School





# RCS ELEMENTARY



Coalton  
Elementary  
School



North  
Elementary  
School



Third Ward  
Elementary  
School



# CAMPUS-BASED SCHOOLS



RCS  
Elementary  
School



Elkins  
Middle  
School

4

LOCATIONS



Midland  
Elementary  
School



Elkins  
High  
School



Randolph  
County  
Technical  
Center

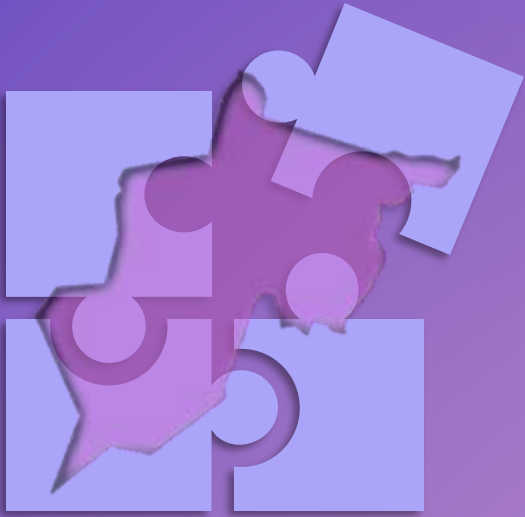


George  
Ward  
Elementary  
School



Tygarts Valley  
Middle/High  
School





# BENEFITS

---

Examining the potential benefits of the reorganization plan for Randolph County Schools

Economies of Scale

Building Utilization  
PURPOSE

Cost Avoidance



# BENEFITS OF THE PROPOSED PLAN

## ○ Campus-based Approach

- Reduces transportation costs
- Reduces facility maintenance cost
  - Less mowing
  - Less windshield time
  - Snow removal reduced
  - Less parking lots (striping, paving, etc.)
  - Reducing number of units and items needing PM and repair.
- Invest in greater safety measures
- Enhance School Nutrition

- Design schools with greater efficiencies in electricity, water, natural gas. Utilize geothermal, solar panels, and other technologies to reduce operational costs.
- NET ZERO SCHOOL
- Long-Term Financial Sustainability



# BENEFITS OF THE PROPOSED PLAN -

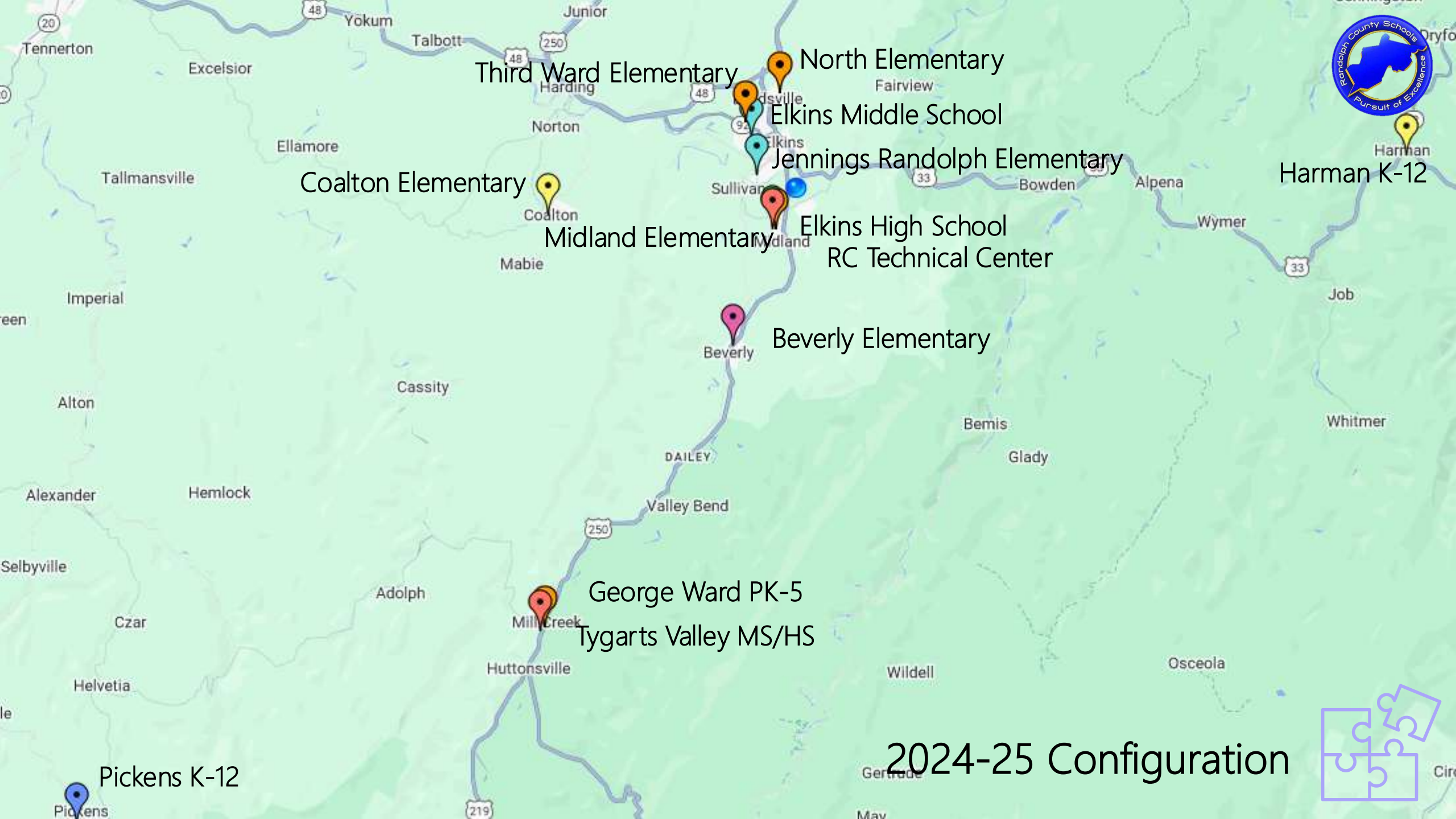
## CONTINUED

- Separate gymnasium and cafeteria for elementary school.
- Adequate classrooms for elementary schools.
- Specialized spaces for special education, innovation, and other needs.
- Concentrate services for students – providing greater services for less cost.
- Have *Communities in Schools* person at each school.
- Have sufficient certified staff.
- Elementary schools would all qualify for Title 1 services.
- Possibly eliminate itinerant positions.
- Add more technology to schools

# BENEFITS OF THE PROPOSED PLAN - CONTINUED

- New positions:
  - Art Teachers at elementary schools
  - 2 secretaries at each school
  - Principal and Asst. Principal at each school.
  - PRO officer at each school
  - School nurse at each school
  - Add AP/Dual Credit Programs for accelerated pathways.
  - Add additional CTE Programs.





Third Ward Elementary

North Elementary

Elkins Middle School

Jennings Randolph Elementary

Coalton Elementary

Harman K-12

Midland Elementary

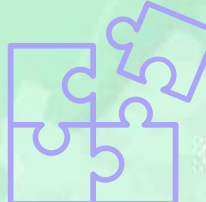
Elkins High School  
RC Technical Center

Beverly Elementary

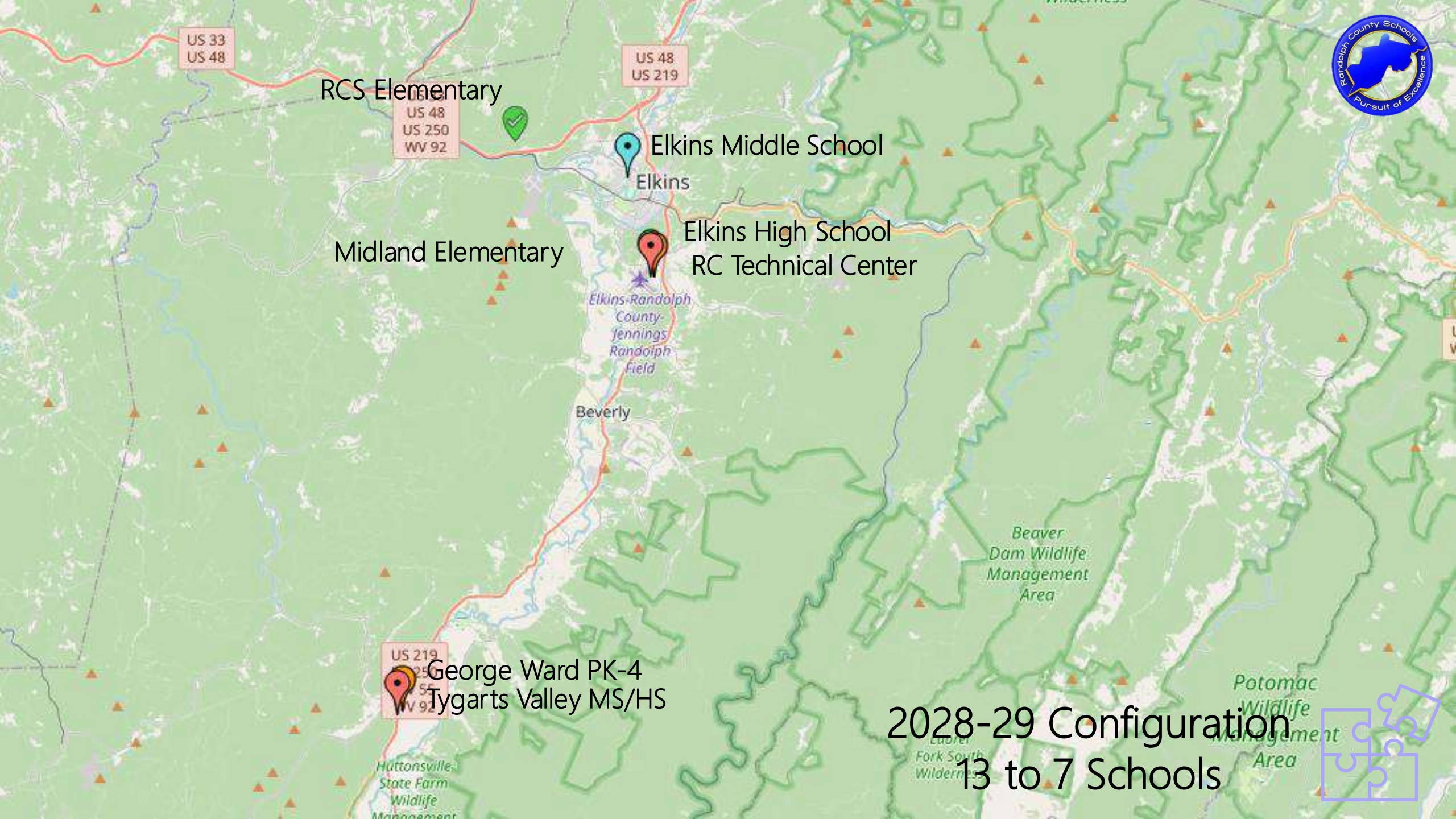
George Ward PK-5

Tygarts Valley MS/HS

2024-25 Configuration







2028-29 Configuration  
13 to 7 Schools





# Closure Timelines





# Questions?