



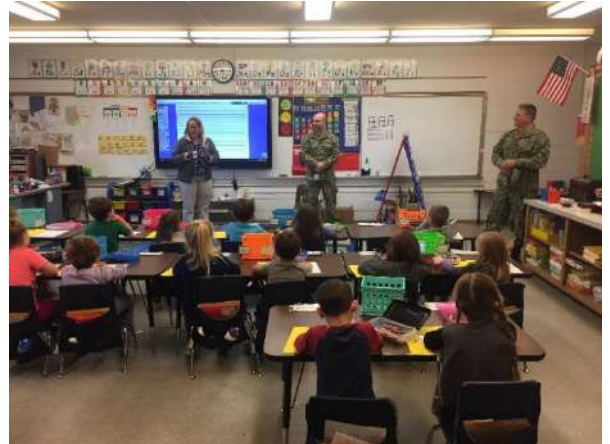
Laurel Public School Superintendent Newsletter December 11, 2018



United Way Cat and Griz Food Drive



The United Way of Yellowstone County sponsored a Cat Griz Food Drive. The food collected from this drive supports the Laurel High School Pantry and the K-8 Backpack Program. The Laurel Branch of Western Security helped deliver food to South Elementary where it was sorted and distributed to all of the schools. The United States Navy Reserve also assisted with sorting food and visited classrooms to talk with the kids about how they serve their country and community.



Laurel High School Link Crew



A mix of 36 upper-class Link Crew leaders and freshmen made a big impact on the Laurel community. On December 10, they started the day at Jaycee Hall assembling gift boxes for Veterans living in transitional housing in Billings. Half the team spent time making crafts with students at Our Savior's Pre-School before heading to Evergreen Health and Rehab where they hung Christmas decorations, went for walks with residents, and gave residents hand massages. The other group went to Community Hope to help organize

and sort items, then, played outside, and read books with students at School of Light Preschool. The whole group gathered at the Administration building to play, read, and color with students at the Laurel Headstart. Then students headed over to the field east of Walmart to do a mass garbage cleanup. They finished the day delivering plates of cookies and hand-written notes to teachers and staff in Laurel who made an impact on their life. **Special THANKS to LHS teachers Wendy Bekkedahl and Mikalya Hirschhorn for spearheading and supervising these kind and generous students in this season of giving!**

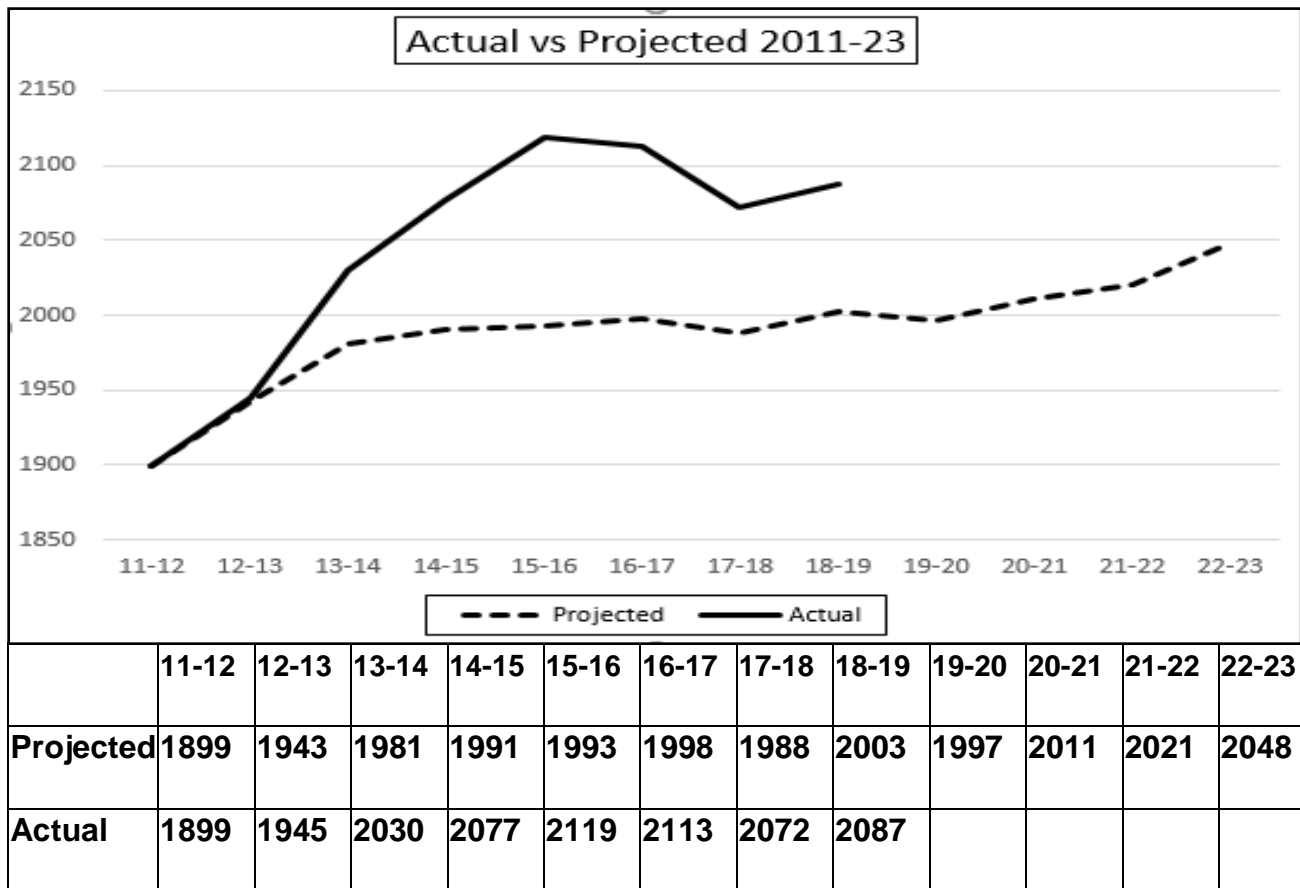


THANK YOU Laurel Association of Churches

A huge THANK YOU to the Laurel Association of Churches for providing a box of food to help Laurel School District families during the holiday season. This is the fourth year the group has collaborated with the school district. Each box provides a Christmas dinner and some other food to assist families over the holiday week along with one or two gifts. All boxes are delivered to the home of families. We are grateful for the generosity towards our students and families in need during the Holiday Season.

Enrollment

Each year on the Fall Count Date, the first Monday in October, school districts submit their official student enrollment count to the Office of Public Instruction (OPI). This year our official count was 2087 students. This is an increase of 21 students from last year's Fall Count. As of December 6, 2018, we have increased an additional 23 students to bring us to 2110 students. With increasing enrollment, the building principals are utilizing all available spaces in their buildings to accommodate the additional students. [Click here to view a 10 Year Historical Fall Count chart.](#)



As our community continues to grow, our enrollment continues to increase which impacts our already overcrowded buildings. The ten-year forecast of 2048 students was surpassed five years ago, and Laurel's enrollment is expected to grow into the foreseeable future. The district is exploring different ways to address the current overcrowding issues as well as planning for future enrollment increases. If you have ideas or suggestions on how to address our overcrowding issues or are interested in being involved in this process and planning, please contact Superintendent Linda Filpula at the district office at 628-8623.

Nonresident (Out of District) Student Historical Data

Laurel Public Schools Nonresident Attendance by Year									
Grade	2010-11	2011-12	2012-13	2013-14	2014-15	2015-16	2016-17	2017-18	2018-19
K	10	8	4	3	3	6	3	0	1
1	8	9	6	8	8	4	5	4	3
2	1	6	8	1	1	8	5	4	3
3	2	1	7	4	6	0	3	5	3
4	2	2	1	4	5	5	3	2	2
5	2	3	1	7	7	4	3	5	3
6	3	5	3	5	5	7	6	3	5
7	3	8	5	3	3	4	8	7	3
8	10	5	10	7	8	5	9	8	6
Elem Total	41	47	45	42	46	43	45	38	29
9	17	24	24	16	18	18	24	17	16
10	14	20	18	28	29	19	20	23	15
11	12	23	20	25	26	31	21	21	19
12	11	18	19	12	12	25	29	18	17
HS Total	54	85	81	81	85	93	94	79	67
Total	95	132	126	123	131	136	139	117	96

Yellowstone West Carbon County Special Services Cooperative (Coop)

We will continue to evaluate our programs, procedures, and processes to create efficiencies and reduce costs while seeking ways to deliver high quality education to our students and community. One change that will be occurring in the 2020-21 school year is the direct management and oversight of special education services to our students. Currently, we belong to the Yellowstone West Carbon County Special Services Cooperative (Coop) which includes 18 school districts from the surrounding counties. While cooperatives are a good model for smaller districts to pool resources, a large district like Laurel can be better served by providing services and support to our students and staff by having personnel and resources onsite in our district 100% of the time. We currently contribute ~\$666,000 to the Coop. Starting July 1, 2020, those funds will be used to hire a Special Education Director and other staff to work with our students, staff, and families.

If you would like to receive to the Superintendent Newsletter directly, you can subscribe [HERE](#).