

PASTEL ZOOMED IN STILL LIFE EMPHASIZING TEXTURE DAY

SET UP AS FOLLOWS:

- Each TABLE needs ONE plastic case of pastels
 - Each STUDENT needs ONE lid OR bottom from an empty pastel box to make their own pallet for today.
 - Some paper towel
 - Paper (one black, one white)
 - An object to draw from the table
- * everything except the paper towel is on the front table

CLEAN UP

- At the end of class you will be required to return your pastels to the plastic container at your table.
- Please match the colours to the correct beautiful colour



ZOOM IN, LAYER COLOURS, REPLICATE TEXTURES USING THE TECHNIQUES FROM THE WORKSHOPS



HATCHING

Hatching is the use of lines to shade or show a texture. It is really great for making things look furry or hairy. It can also be great for things like grass or pine trees.

The example here uses long hatching to create the fur on the outside of the bunny ear and short hatching to create the fuzzy look on the inside of the ear.



REQUIREMENTS

1. Zoom in
2. Layer colours
3. Replicate textures using the techniques From the workshops
4. One on white paper, one on black paper
5. Your drawing must go off the page
6. If you leave blank paper, it must be an interesting shape. Alternately you can make a background.

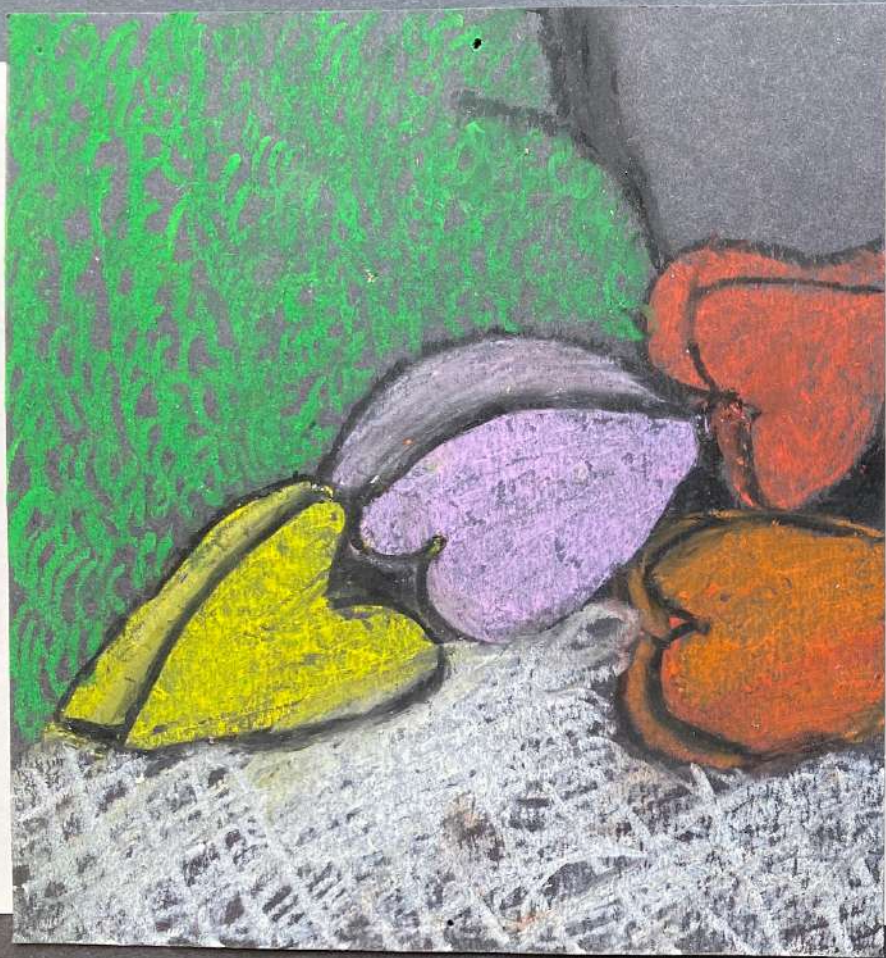
SUBJECT

Select one or two objects from the front table.

FINISHED?

- Scrub your desk
- Work on sketchbook work, a room task, or the add to me artwork















S. R. 1911

Play with
scratching
to create
even more
textures.





Tobias.w





CHRISTINA W.

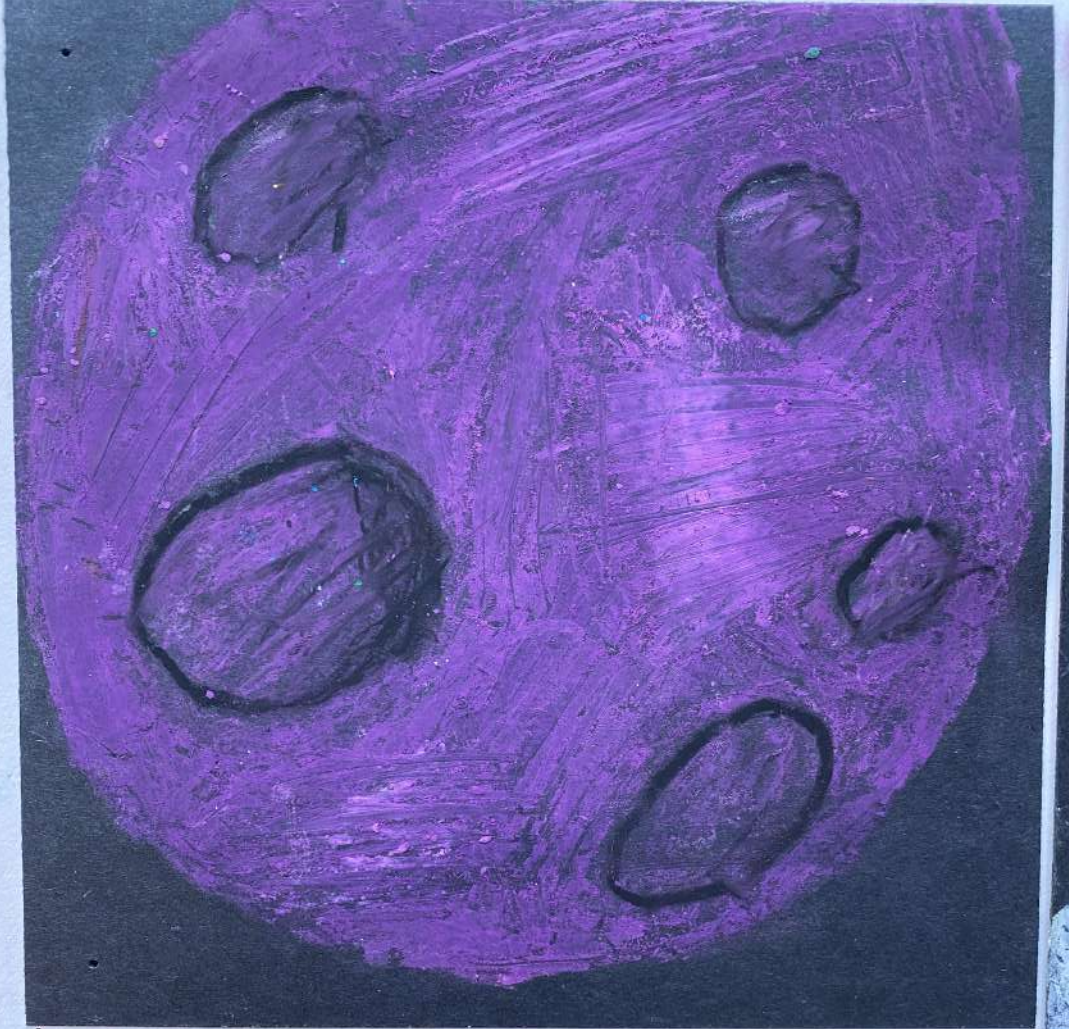




Myles Arsenault











Enrica Tansello





7/2

R.F.











Raphael





Adrianna Currie



REQUIREMENTS

1. Zoom in
2. Layer colours
3. Replicate textures using the techniques From the workshops
4. One on white paper, one on black paper
5. Your drawing must go off the page
6. If you leave blank paper, it must be an interesting shape. Alternately you can make a background.

SUBJECT

Select one or two objects from the front table.

FINISHED?

- Scrub your desk
- Work on sketchbook work, a room task, or the add to me artwork



PASS IN AND CLEAN UP

- 1) Take a photo of your drawings and submit on GC.
- 2) Put your drawings on the bulletin board.
- 3) Return your pastels to the plastic case at your table. Please **match the colours** to the correct beautiful colour coded spots they started in.
- 4) Once everyone has returned pastels at your table return the plastic case and empty boxes to the front table.
- 5) Put paper towel in garbage
- 6) Wipe your desk squeaky, clean - until it is spotless! If needed, use soap, scrub brush, scrubie, or elbow grease!
- 7) Put your chair up. (last clas only)

