

## JOB DESCRIPTION

---

**BAND    GRADE    SUBGRADE    WORKING CONDITIONS**

---

<b>JOB TITLE</b>	<b>CONTRACT REFERENCE</b>
Student Auditorium Worker	Casual Employee

---

<b>TITLE OF IMMEDIATE SUPERVISOR</b>	<b>VERSION DATE</b>
Community Outreach and Engagement Coordinator	

---

**JOB SUMMARY:** Provide any needed technical support for users of the District Auditorium

---

**TASK NO.**

---

The essential functions of this job include, but are not limited to, the following fundamental job duties:	
1.	Learn the proper, safe and responsible operation and adjustment of all technical equipment in the facility.
2.	Provide technical assistance in the areas of light, sound and video for user groups of the Fridley District Auditorium.
3.	Assist with set up, staging and rigging and teardown of any on-stage needs for user groups.
4.	Assist with set up or adjustment of light and sound plots for specific needs of a user group.
5.	Ensure the safe operation and use of all technical equipment and supplies.
6.	Ensure that all equipment and supplies are secured after use.
7.	Ensure that the facility is operated in a professional and respectful manner

---

**QUALIFICATIONS** (Specific training or job experience required before appointment)

- Applicants should have an appreciation for the performing arts as well as a desire to learn the technical aspects that support fine arts performance.
-

---

**JOB TITLE**

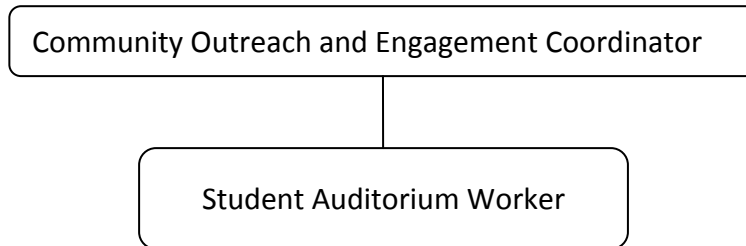
Student Auditorium Worker

– Page 2

---

**CONTRACT REFERENCE**

Casual Employee

**ORGANIZATIONAL RELATIONSHIPS**

---

**SYMBOLS**

DIRECT SUPERVISION

---

INDIRECT SUPERVISION

.....

WORK DIRECTION

-----

ADVISE/INFORM

-.-.-.-

---

**PHYSICAL FACTORS**

The physical demands described here are representative of those that must be met by an employee to successfully perform the essential functions of this job. Reasonable accommodations may be made to enable individuals with disabilities to perform the essential functions. While performing the duties of this job, the employee is regularly required to talk, hear, climb, balance, stoop, kneel, reach for objects, stand, walk, push, pull, lift, and use hands to grasp and feel. The employee must frequently lift and/or move up to 20 pounds, occasionally being required to lift and/or move up to 30 pounds or more. Specific vision abilities required include close vision, distance vision, and the ability to adjust focus