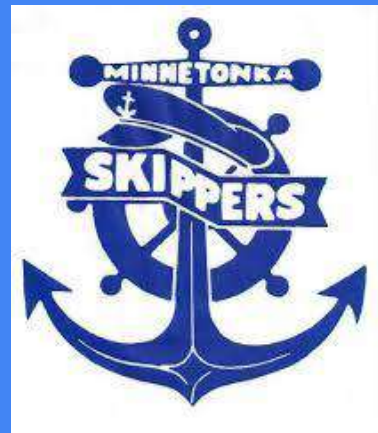


STATE OF THE SCHOOL

STACY DECORSEY, LAURA NELSON, ANJI JOHNSON



STUDENT ENROLLMENT

Kindergarten - 129 students

1st Grade - 123 students

2nd Grade - 110 students

3rd Grade - 131 students

4th Grade - 120 students

5th Grade - 115 students

Navigator - 78 students

806 Total Students



NEW STAFF



Kindergarten - Bailey Gummer

1st Grade - Abby Klass

3rd Grade - Megan Leabo

4th Grade - Lyndsey Steele

5th Grade - Mike Savage

Art - Betsy Fitzgibbons

Music - Patrick O'Keefe

Resource LD - Kristin Spilane

Resource DCD - Julie Knight

ELL Long-Term Sub - Laura Walklet

Office Assistant - Amber Hustad

Playground Coach - John Sandbo "Coach J"

Paraprofessionals – Jodi Skoog, Jack Violette,
Jodi Kueppers, Erin Bakkala, & Tammy Baht

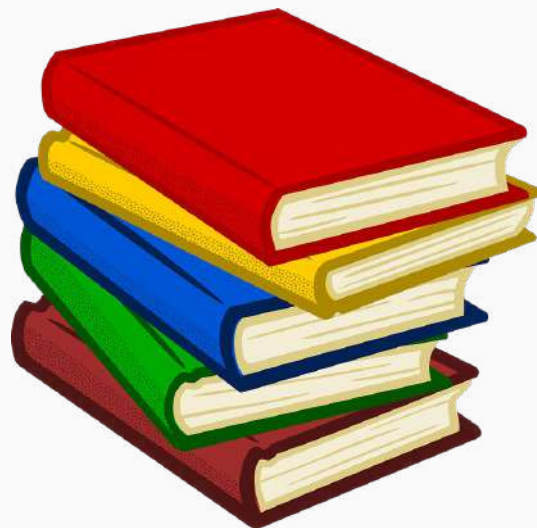
STAFF IN NEW POSITIONS

Resource LD - Judy McClellan (full time)

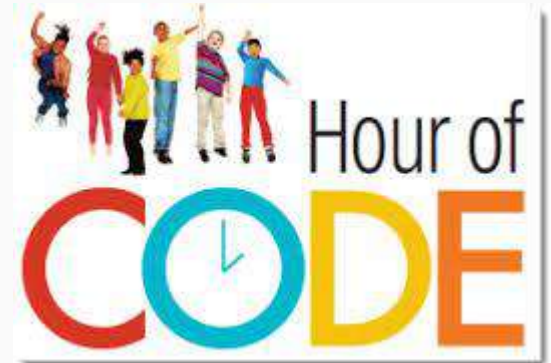
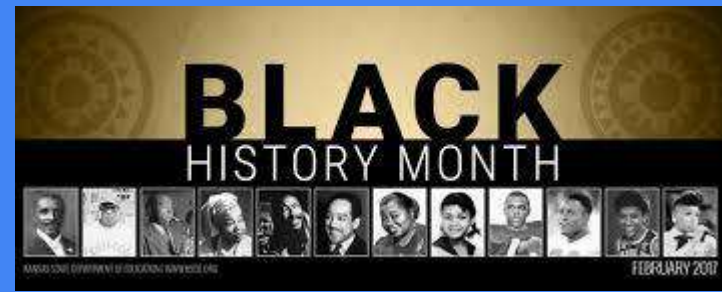
Admin Support - Laura Nelson (full time)

Wilson Reading - Lisa Myer

Counselor - Anji Johnson (full time)



THINGS WE ARE EXCITED ABOUT



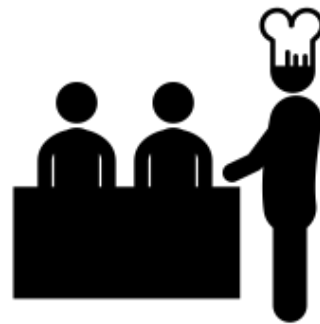
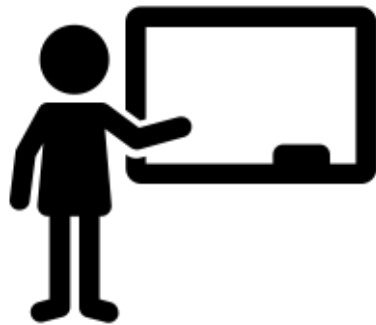
SOCIAL THINKING



School Board #1 Goal:

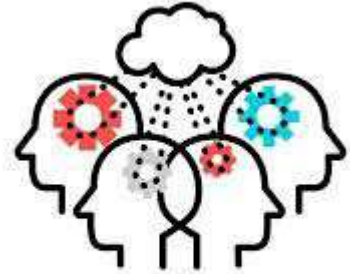
Student Well-Being





Shared Language

- Provides language for students, staff, families to:
 - Set clear, positive expectations
 - Make abstract world of social more concrete
 - Discuss uncomfortable situations in a neutral, teaching manner
 - Problem solve unexpected behavior/situations



SOCIAL THINKING

Social Thinking Vocabulary

- Thinking Thoughts, Feeling Feelings
- Group Plan
- Thinking with Your Eyes
- Body in the Group
- Whole Body Listening
- Expected/ Unexpected
- Smart Guess
- Flexible and Stuck Thinking
- Size of the Problem

UNIVERSAL SCREENERS

SAEBRS

(Social, Academic, Emotional, Behavior Risk Screener)

- A brief and efficient tool for universal screening of student risk for social-emotional and behavioral problems
- Objective: to provide early intervention support systems in a research- based, data driven format.
- Same screener at Minnewashta 2017-18
- 1-3 minutes per student via an online rating scale of 19 items
- 3 times per year

UNIVERSAL SCREENERS

SAEBRS

(Social, Academic, Emotional, Behavior Risk Screener)

Scale	At Risk	Not At Risk
Social	0-12	13+
Academic	0-9	10+
Emotional	0-16	17+
Total	0-35	36+

Social Behavior	Never	Sometimes	Often	Almost Always
Arguing	3	2	1	0
Cooperation with peers	0	1	2	3
Temper outbursts	3	2	1	0
Disruptive behavior	3	2	1	0
Polite and socially appropriate...	0	1	2	3
Impulsiveness	3	2	1	0
Academic Behavior	Never	Sometimes	Often	Almost Always
Interest in academic topics	0	1	2	3
Preparedness for instruction	0	1	2	3
Production of acceptable work	0	1	2	3
Difficulty working independently	3	2	1	0
Distractedness	3	2	1	0
Academic engagement	0	1	2	3

Emotional Behavior	Never	Sometimes	Often	Almost Always
Sadness	3	2	1	0
Fearfulness	3	2	1	0
Adaptable to change	0	1	2	3
POsitive attitude	0	1	2	3
Worry	3	2	1	0
Difficulty rebounding from setbacks	3	2	1	0
Withdrawal	3	2	1	0

UNIVERSAL SCREENERS

- **Team reviews data** (Psychologist, Stdt Support Services Facilitator, Admin Support, Social Worker, Counselor)
- Students are grouped by support needed
 - Self regulation, anxiety/self esteem, social thinking
- Parent permission forms are emailed
- 6 week, 20 minutes/week skills group, 3-6 students in each group
- December=re-screen
- January-April repeat process

Thank

You