

STARFISH DRAW

By Kelly Riedell/Brookings Biology

DORSAL VIEW
ABORAL SURFACE

ANUS

TRIVIUM

EYESPOTS-
Sense light/dark

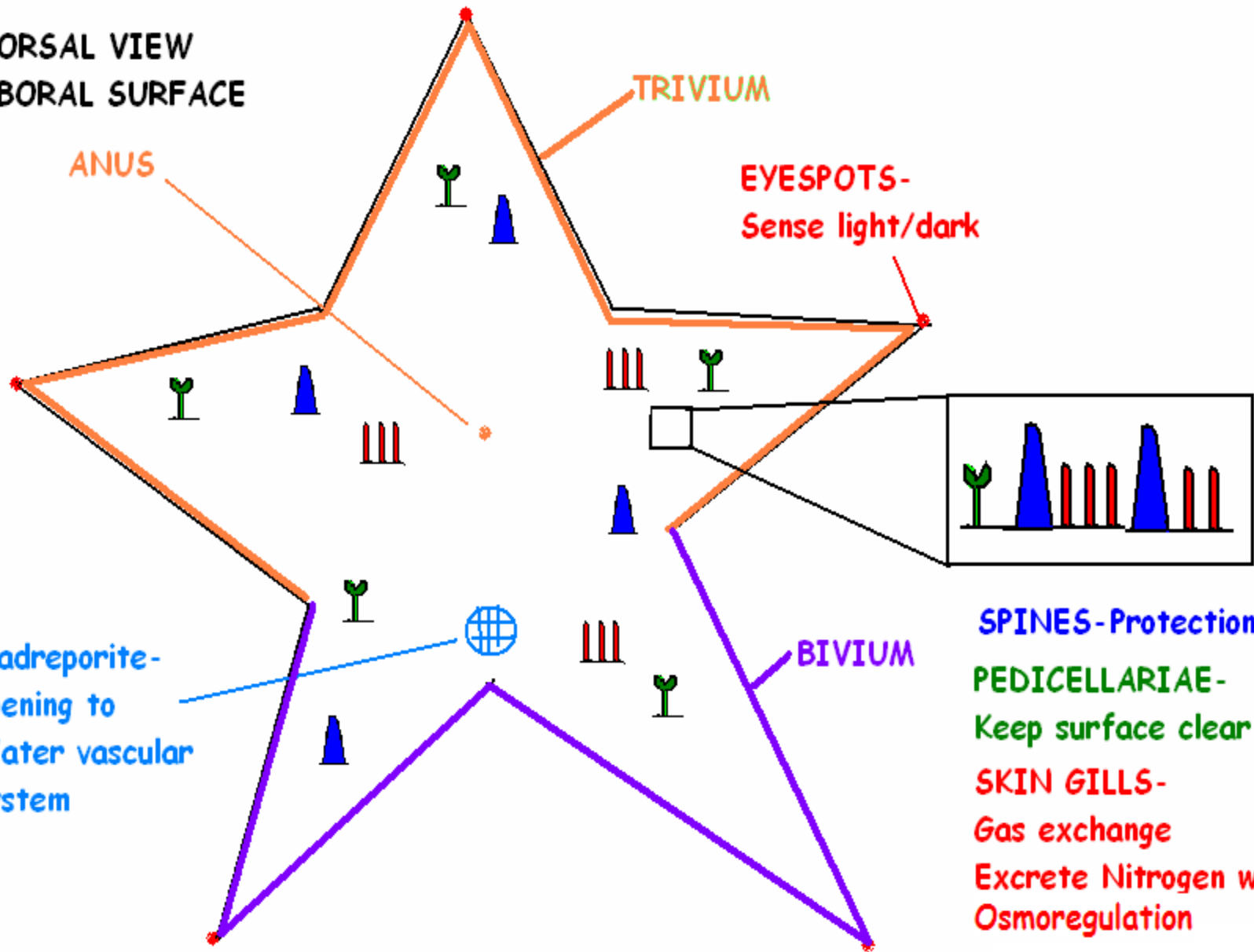
Madreporite-
opening to
Water vascular
system

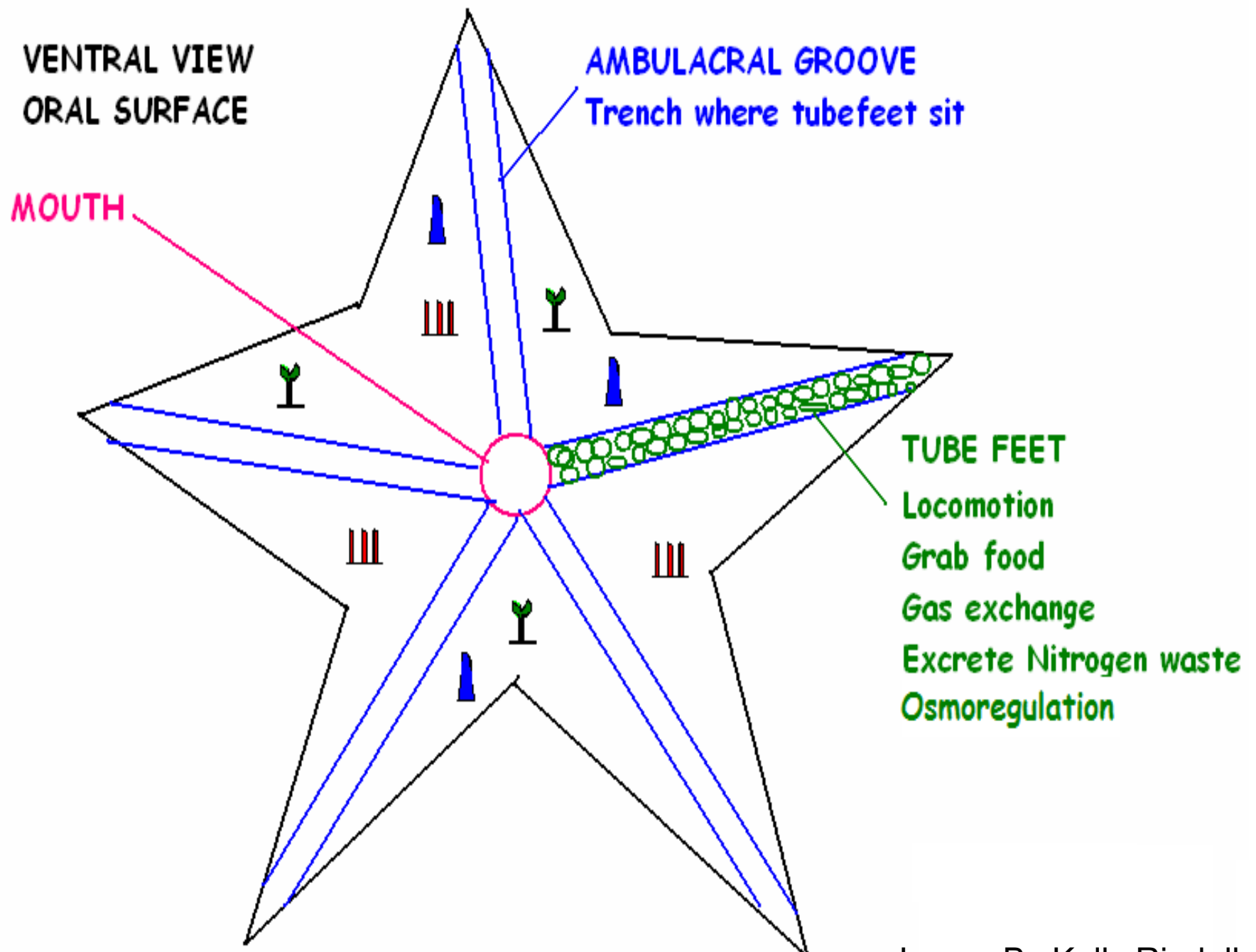
BIVIUM

SPINES- Protection

PEDICELLARIAE-
Keep surface clear

SKIN GILLS-
Gas exchange
Excrete Nitrogen waste
Osmoregulation





DORSAL VIEW



Endoskeleton
Made of
ossicles

STOMACH

Pyloric (above) connects to digestive glands
Cardiac (below) connects to mouth
(Extrudes during feeding)

COELOM

LEVEL 1

DIGESTIVE GLANDS

Make bile
Finish digestion
Absorb nutrients

LEVEL 2

Digestive glands
removed

GONADS

Males- testes
Females- ovary

AMPULLAE

Squeeze to
control water
in tubefeet

LEVEL 3

AMBULACRAL RIDGE

Contains:

Radial nerve
Radial canal

