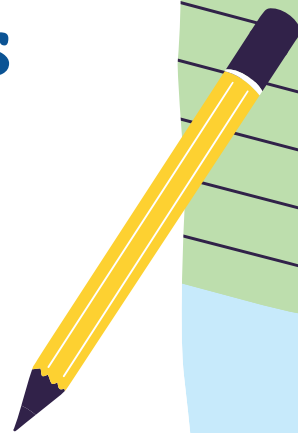
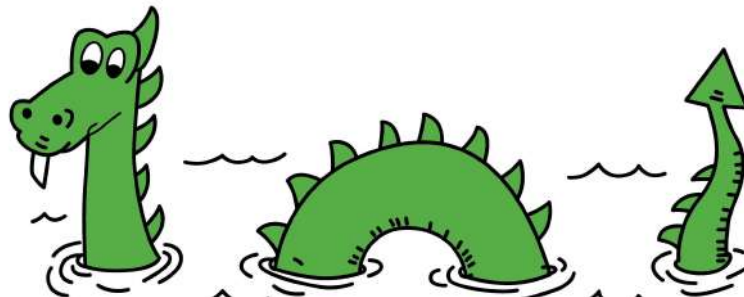




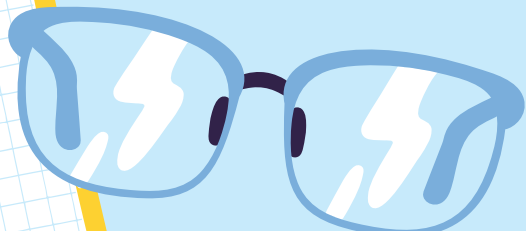
Island Heights Grade School

Spring 2024 NJSLA Scores

Presented October 9, 2024
By Lisa Royer, Principal



English Language Arts 2023-2024



3rd Grade: English Language Arts

NJSLA SCORE	23-24 3rd Grade (4th) (25 students)		22-23 3rd Grade (5th) (21 students)		21-22 3rd Grade (6th) (13 students)	
1 Did Not Meet Yet	2	8%	2	9.5%	2	15.4%
2 Partially Met	1	4%	3	14.3%	0	0%
3 Approached	8	32%	6	28.6%	2	15.4%
4 Met	13	52%	9	42.9%	8	61.5%
5 Exceeded	1	4%	1	4.8%	1	7.7%
≥4 TOTAL Met or Exceeded Expectations	14	56%	10	47.6%	9	69.2%

4th Grade: English Language Arts

NJSLA SCORE	23-24 4th Grade (5th) (19 students)		22-23 4th Grade (6th) (12 students)		21-22 4th Grade (7th) (16 students)	
1 Did Not Meet Yet	0	0%	1	8.3%	0	0%
2 Partially Met	1	5.3%	0	0.0%	1	6.3%
3 Approached	6	31.6%	0	0.0%	5	31.3%
4 Met	10	52.6%	7	58.3%	6	37.5%
5 Exceeded	2	10.5%	4	33.3%	4	25%
≥4 <u>TOTAL</u> Met or Exceeded Expectations	12	63.2%	11	91.7%	10	62.5%

5th Grade: English Language Arts

NJSLA SCORE	23-24 5th Grade (6th) (13 students)		22-23 5th Grade (7th) (16 students)		21-22 5th Grade (8th) (17 students)	
1 <i>Did Not Meet Yet</i>	1	7.7%	0	0.0%	1	5.9%
2 <i>Partially Met</i>	0	0%	2	12.5%	2	11.8%
3 <i>Approached</i>	1	7.7%	3	18.8%	2	11.8%
4 <i>Met</i>	7	53.8%	10	62.5%	8	47.1%
5 <i>Exceeded</i>	4	30.8%	1	6.3%	4	23.5%
≥4 <u>TOTAL</u> Met or Exceeded Expectations	11	84.6%	11	68.8%	12	70.6%

6th Grade: English Language Arts

NJSLA SCORE	23-24 6th Grade (7th) (14 students)		22-23 6th Grade (8th) (18 students)		21-22 6th Grade (9th) (11 students)	
1 Did Not Meet Yet	0	0%	0	0.0%	1	9.1%
2 Partially Met	1	7.1%	0	0.0%	0	0%
3 Approached	3	21.4%	4	22.2%	1	9.1%
4 Met	8	57.1%	13	72.2%	8	72.7%
5 Exceeded	2	14.3%	1	5.6%	1	9.1%
≥4 <u>TOTAL</u> Met or Exceeded Expectations	10	71.4%	14	77.8%	9	81.8%

2023-2024 English Language Arts Percentages

GRADE	STATE	ISLAND HEIGHTS
	<i>Met or Exceeded Expectations</i> ≥ Level 4	<i>Met or Exceeded Expectations</i> ≥ Level 4
3	43.6%	56%
4	50.8%	63.2%
5	52.2%	84.6%
6	53.2%	71.4%

2023-2024 English Language Arts

Average Scale Score

GRADE	STATE	ISLAND HEIGHTS
3	741	753
4	749	757
5	750	779
6	751	765

Mathematics 2023-2024



3rd Grade: Mathematics

NJSLA SCORE	23-24 3rd Grade (4th) (25 students)		22-23 3rd Grade (5th) (21 students)		21-22 3rd Grade (6th) (13 students)	
1 Did Not Meet Yet	0	0%	1	4.8%	1	7.7%
2 Partially Met	4	16%	6	28.6%	1	7.7%
3 Approached	6	24%	3	14.3%	1	7.7%
4 Met	13	52%	8	38.1%	5	38.5%
5 Exceeded	2	8%	3	14.3%	5	38.5%
≥4 TOTAL Met or Exceeded Expectations	15	60%	11	52.4%	10	76.9%

4th Grade: Mathematics

NJSLA SCORE	23-24 4th Grade (5th) (19 students)		22-23 4th Grade (6th) (12 students)		21-22 4th Grade (7th) (16 students)	
1 <i>Did Not Meet Yet</i>	0	0%	1	8.3%	0	0%
2 <i>Partially Met</i>	3	15.8%	0	0.0%	1	6.3%
3 <i>Approached</i>	6	31.6%	2	16.7%	4	25%
4 <i>Met</i>	10	52.6%	8	66.7%	10	62.5%
5 <i>Exceeded</i>	0	0%	1	8.3%	1	6.3%
≥4 <u>TOTAL</u> Met or Exceeded Expectations	10	52.6%	9	75.0%	11	68.8%

5th Grade: Mathematics

NJSLA SCORE	23-24 5th Grade (6th) (13 students)		22-23 5th Grade (7th) (16 students)		21-22 5th Grade (8th) (17 students)	
1 Did Not Meet Yet	1	7.7%	0	0.0%	3	17.6%
2 Partially Met	0	0%	3	18.8%	1	5.9%
3 Approached	3	23.1%	4	25.0%	5	29.4%
4 Met	6	46.2%	6	37.5%	8	47.1%
5 Exceeded	3	23.1%	3	18.8%	0	0%
≥4 TOTAL Met or Exceeded Expectations	9	69.2%	9	56.3%	8	47.1%

6th Grade: Mathematics

NJSLA SCORE	23-24 6th Grade (7th) (19 students)		22-23 6th Grade (8th) (18 students)		21-22 6th Grade (9th) (11 students)	
1 <i>Did Not Meet Yet</i>	0	0%	1	5.6%	1	9.1%
2 <i>Partially Met</i>	3	21.4%	2	11.1%	0	0%
3 <i>Approached</i>	2	14.3%	2	11.1%	2	18.2%
4 <i>Met</i>	8	57.1%	8	44.4%	6	54.5%
5 <i>Exceeded</i>	1	7.1%	5	27.8%	2	18.2%
≥4 <u>TOTAL</u> Met or Exceeded Expectations	9	64.3%	13	72.2%	8	72.7%

2023-2024 Mathematics Percentages

GRADE	STATE	ISLAND HEIGHTS
	<i>Met or Exceeded Expectations</i> ≥ Level 4	<i>Met or Exceeded Expectations</i> ≥ Level 4
3	47.5%	60%
4	44.9%	52.6%
5	40.2%	69.2%
6	36.2%	64.3%

2023-2024 Mathematics

Average Scale Score

GRADE	STATE	ISLAND HEIGHTS
3	747	755
4	744	748
5	741	765
6	737	755

Science 2023-2024



5th Grade: Science

NJSLA SCORE	23-24 5th Grade (6th) (14 students)		22-23 5th Grade (7th) (18 students)		21-22 5th Grade (8th) (11 students)	
1 Below Proficient	2	15.4%	1	5.6%	1	9.1%
2 Near Proficiency	3	23.1%	2	11.1%	0	0%
3 Proficient	7	53.8%	2	11.1%	2	18.2%
4 Advanced Proficiency	1	7.7%	8	44.4%	6	54.5%
≥4 <u>TOTAL</u> Met or Exceeded Expectations	8	61.5%	13	72.2%	8	72.7%

2023-2024 Science Percentages



GRADE	STATE <i>Met or Exceeded Expectations</i> ≥ Level 3	ISLAND HEIGHTS <i>Met or Exceeded Expectations</i> ≥ Level 3
5	27.6%	61.5%



2023-2024 Science Average Scale Score



GRADE	STATE	ISLAND HEIGHTS
5	169	198



Results By Demographics



Grades 3-6 English Language Arts: By Gender

NJSLA SCORE	Female 33	Male 38
1 <i>Did Not Meet Yet</i>	3.0%	5.3%
2 <i>Partially Met</i>	3.0%	5.3%
3 <i>Approached</i>	30.3%	21.1%
4 <i>Met</i>	48.5%	57.9%
5 <i>Exceeded</i>	15.2%	10.5%
≥4 TOTAL Met or Exceeded Expectations	63.6%	68.4%

Grades 3-6 Mathematics: By Gender

NJSLA SCORE	Female 33	Male 38
1 <i>Did Not Meet Yet</i>	0%	2.6%
2 <i>Partially Met</i>	18.2%	10.5%
3 <i>Approached</i>	27.3%	21.1%
4 <i>Met</i>	42.4%	60.5%
5 <i>Exceeded</i>	12.1%	5.3%
≥4 TOTAL Met or Exceeded Expectations	54.5%	65.8%

Grades 5 Science: By Gender

NJSLA SCORE	Female 4	Male 9
1 <i>Below Proficient</i>	25%	11.1%
2 <i>Near Proficiency</i>	25%	22.2%
3 <i>Proficient</i>	50%	55.6%
4 <i>Advanced Proficiency</i>	0%	11.1%
≥3 <u>TOTAL</u> Met or Exceeded Expectations	50%	66.7%

<div> <div>Grades 3-6 English Language Arts:</div> <div>By Ethnicity</div> </div>							
NJSLA Score	Black/ African American	American Indian or Alaskan Native	Asian	Native Hawaiian or Other Pacific Islander	Hispanic or Latino	White	Two or More Races
1 <i>Did Not Meet Yet</i>	0%	0%	0%	0%	0%	5.0%	0%
2 <i>Partially Met</i>	0%	0%	0%	0%	14.3%	3.3%	0%
3 <i>Approached</i>	0%	0%	0%	0%	14.3%	28.3%	0%
4 <i>Met</i>	0%	0%	0%	0%	71.4%	50%	75%
5 <i>Exceeded</i>	0%	0%	0%	0%	0%	13.3%	25%
≥4 <u>TOTAL</u>	0%	0%	0%	0%	71.4%	63.3%	100%

<div> <div>Grades 3-6 Mathematics:</div> <div>By Ethnicity</div> </div>							
NJSLA Score	Black/ African American	American Indian or Alaskan Native	Asian	Native Hawaiian or Other Pacific Islander	Hispanic or Latino	White	Two or More Races
1 Did Not Meet Yet	0%	0%	0%	0%	0%	1.7%	0%
2 Partially Met	0%	0%	0%	0%	14.3%	15.0%	0%
3 Approached	0%	0%	0%	0%	28.6%	25.0%	0%
4 Met	0%	0%	0%	0%	42.9%	50.0%	100%
5 Exceeded	0%	0%	0%	0%	14.3%	8.3%	0%
≥4 <u>TOTAL</u> Meets or Exceeds	0%	0%	0%	0%	57.2%	58.3%	100%

Grades 5 Science: By Ethnicity

NJSLA SCORE	Black/ African American	American Indian or Alaskan Native	Asian	Native Hawaiian or Other Pacific Islander	Hispanic or Latino	White	Two or More Races
1 Below Proficient	0%	0%	0%	0%	0%	20%	0%
2 Near Proficiency	0%	0%	0%	0%	50%	20%	0%
3 Proficient	0%	0%	0%	0%	50%	50%	100%
4 Advanced Proficiency	0%	0%	0%	0%	0%	10%	0%
≥3 <u>TOTAL</u> Met or Exceeded Expectations	0%	0%	0%	0%	50%	60%	100%

Grades 3-6 English Language Arts: Students with Disabilities

Students with Disabilities

NJSLA SCORE	IEP	504
1 <i>Did Not Meet Yet</i>	21.4%	0%
2 <i>Partially Met</i>	7.1%	16.7%
3 <i>Approached</i>	28.6%	41.7%
4 <i>Met</i>	42.9%	33.3%
5 <i>Exceeded</i>	0%	8.3%
≥4 <u>TOTAL</u> Met or Exceeded Expectations	42.9%	41.6%

Grades 3-6 Mathematics: Students with Disabilities

NJSLA SCORE	IEP	504
1 <i>Did Not Meet Yet</i>	7.1%	0%
2 <i>Partially Met</i>	21.4%	33.3%
3 <i>Approached</i>	28.6%	33.3%
4 <i>Met</i>	42.9%	33.3%
5 <i>Exceeded</i>	0%	0%
≥4 <u>TOTAL</u> Met or Exceeded Expectations	42.9%	33.3%

Grades 5 Science: Students with Disabilities

NJSLA SCORE	IEP	504
1 <i>Below Proficient</i>	33.3%	0%
2 <i>Near Proficiency</i>	33.3%	66.7%
3 <i>Proficient</i>	33.3%	33.3%
4 <i>Advanced Proficiency</i>	0%	0%
≥3 <u>TOTAL</u> Met or Exceeded Expectations	33.3%	33.3%

Demographics

NJSLA SCORE	Economically Disadvantaged	Non-Economically Disadvantaged
1 <i>Did Not Meet Yet</i>	0%	4.4%
2 <i>Partially Met</i>	0%	4.4%
3 <i>Approached</i>	0%	26.5%
4 <i>Met</i>	66.7%	52.9%
5 <i>Exceeded</i>	33.3%	11.8%
≥4 <u>TOTAL</u> Met or Exceeded Expectations	100%	64.7%

Grades 3-6 Mathematics: Other Demographics

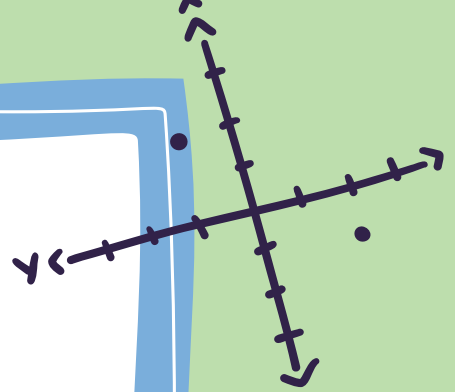
NJSLA SCORE	Economically Disadvantaged	Non-Economically Disadvantaged
1 <i>Did Not Meet Yet</i>	0%	1.5%
2 <i>Partially Met</i>	0%	14.7%
3 <i>Approached</i>	0%	25%
4 <i>Met</i>	100%	50%
5 <i>Exceeded</i>	0%	8.8%
≥4 <u>TOTAL</u> Met or Exceeded Expectations	100%	58.8%

Grades 5 Science: Other Demographics

NJSLA SCORE	Economically Disadvantaged	Non-Economically Disadvantaged
1 <i>Below Proficient</i>	0%	16.7%
2 <i>Near Proficiency</i>	0%	25%
3 <i>Proficient</i>	100%	50%
4 <i>Advanced Proficiency</i>	0%	8.3%
≥3 <u>TOTAL</u> Met or Exceeded Expectations	100%	58.3%

Spring 2024 Grades 3-6
NJSLA:
English Language
Learners

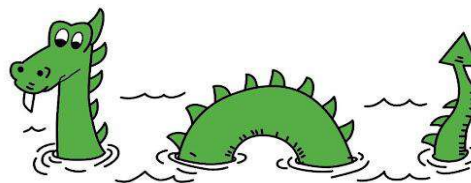
0% ELLs



$$a \times b \times c =$$
$$ab - bc$$



Current 4th Grade Class Trends



Sea Devils



$$\sqrt{\frac{3}{4}}$$

English Language Arts

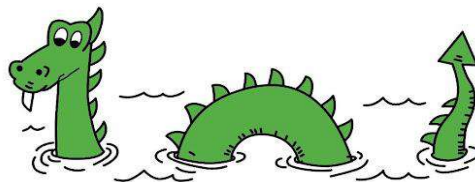
NJSLA SCORE	23-24 3rd Grade (25 students)	
1 <i>Did Not Meet Yet</i>	2	8%
2 <i>Partially Met</i>	1	4%
3 <i>Approached</i>	8	32%
4 <i>Met</i>	13	52%
5 <i>Exceeded</i>	1	4%
≥4 TOTAL Met or Exceeded Expectations	14	56%

Mathematics

NJSLA SCORE	23-24 3rd Grade (25 students)	
1 <i>Did Not Meet Yet</i>	0	0%
2 <i>Partially Met</i>	4	16%
3 <i>Approached</i>	6	24%
4 <i>Met</i>	13	52%
5 <i>Exceeded</i>	2	8%
≥4 TOTAL Met or Exceeded Expectations	15	60%



Current 5th Grade Class Trends



Sea Devils



$$\sqrt{\frac{3}{4}}$$

English Language Arts

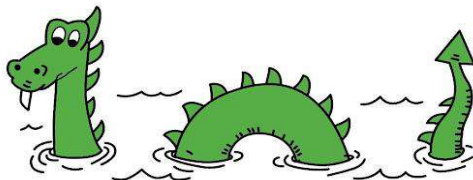
NJSLA SCORE	23-24 4th Grade (19 students)		22-23 3rd Grade (21 students)	
1 <i>Did Not Meet Yet</i>	0	0%	2	9.5%
2 <i>Partially Met</i>	1	5.3%	3	14.3%
3 <i>Approached</i>	6	31.6%	6	28.6%
4 <i>Met</i>	10	52.6%	9	42.9%
5 <i>Exceeded</i>	2	10.5%	1	4.8%
≥4 <u>TOTAL</u> Met or Exceeded Expectations	12	63.2%	10	47.6%

Mathematics

NJSLA SCORE	23-24 4th Grade (19 students)		22-23 3rd Grade (21 students)	
1 <i>Did Not Meet Yet</i>	0	0%	1	4.8%
2 <i>Partially Met</i>	3	15.8%	6	28.6%
3 <i>Approached</i>	6	31.6%	3	14.3%
4 <i>Met</i>	10	52.6%	8	38.1%
5 <i>Exceeded</i>	0	0%	3	14.3%
≥4 <u>TOTAL</u> Met or Exceeded Expectations	10	52.6%	11	52.4%



6th Grade Class Trends



Sea Devils

$$\sqrt{\frac{3}{4}}$$



English Language Arts

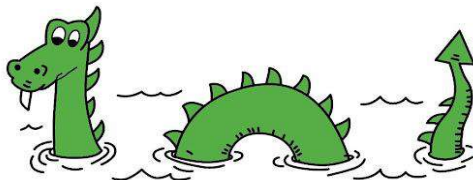
NJSLA SCORE	23-24 5th Grade (13 students)		22-23 4th Grade (12 students)		21-22 3rd Grade (13 students)	
1 <i>Did Not Meet Yet</i>	1	7.7%	1	8.3%	2	15.4%
2 <i>Partially Met</i>	0	0%	0	0.0%	0	0%
3 <i>Approached</i>	1	7.7%	0	0.0%	2	15.4%
4 <i>Met</i>	7	53.8%	7	58.3%	8	61.5%
5 <i>Exceeded</i>	4	30.8%	4	33.3%	1	7.7%
≥4 <u>TOTAL</u> Met or Exceeded Expectations	11	84.6%	11	91.7%	9	69.2%

Mathematics

NJSLA SCORE	23-24 5th Grade (6th) (13 students)		22-23 4th Grade (12 students)		21-22 3rd Grade (13 students)	
1 <i>Did Not Meet Yet</i>	1	7.7%	1	8.3%	2	15.4%
2 <i>Partially Met</i>	0	0%	0	0.0%	0	0%
3 <i>Approached</i>	3	23.1%	2	16.7%	2	15.4%
4 <i>Met</i>	6	46.2%	8	66.7%	8	61.5%
5 <i>Exceeded</i>	3	23.1%	1	8.3%	1	7.7%
≥4 <u>TOTAL</u> Met or Exceeded Expectations	9	69.2%	9	75.0%	9	69.2%



7th Grade Class Trends



Sea Devils



$$\sqrt{\frac{3}{4}}$$

English Language Arts

NJSLA SCORE	23-24 6th Grade (14 students)		22-23 5th Grade (16 students)		21-22 4th Grade (16 students)	
1 <i>Did Not Meet Yet</i>	0	0%	0	0.0%	0	0%
2 <i>Partially Met</i>	1	7.1%	2	12.5%	1	6.3%
3 <i>Approached</i>	3	21.4%	3	18.8%	5	31.3%
4 <i>Met</i>	8	57.1%	10	62.5%	6	37.5%
5 <i>Exceeded</i>	2	14.3%	1	6.3%	4	25%
≥4 <u>TOTAL</u> Met or Exceeded Expectations	10	71.4%	11	68.8%	10	62.5%

Mathematics

NJSLA SCORE	23-24 6th Grade (14 students)		22-23 5th Grade (16 students)		21-22 4th Grade (16 students)	
1 <i>Did Not Meet Yet</i>	0	0%	0	0.0%	0	0%
2 <i>Partially Met</i>	3	21.4%	3	18.8%	1	6.3%
3 <i>Approached</i>	2	14.3%	4	25.0%	4	25%
4 <i>Met</i>	8	57.1%	6	37.5%	10	62.5%
5 <i>Exceeded</i>	1	7.1%	3	18.8%	1	6.3%
≥4 <u>TOTAL</u> Met or Exceeded Expectations	9	64.3%	9	56.3%	11	68.8%

23-24 NJSLA Highlights

- Individual Growth: Many students moved up on their scores from previous year!
- HIT Was A Success: Students in Grade 4 that participated in the HIT program improved their previous scores!
- IHGS scored above state averages in ALL subject areas again!
- 5th Grade Science (Current 6th) scores are much higher than the state average.
- Strengths: Grades 4-6 ELA, Grade 3 Math



Moving Forward

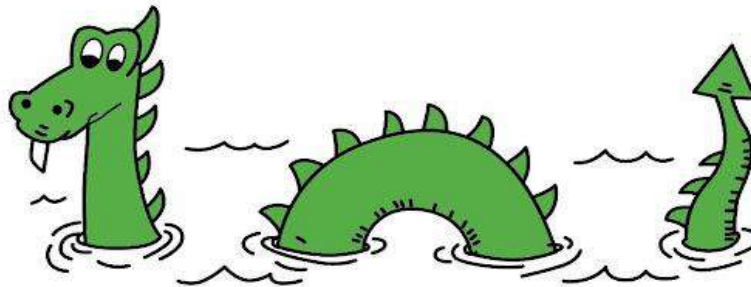


- ★ We will continue to use this data to monitor growth and drive instruction in our classrooms. Focus on moving students with 3's to a 4 or 5.
- ★ **H.I.T. Program:** Provide tutoring opportunities with our additional funding prior to Spring 2025 testing.
- ★ **W.I.N. Periods:** Teachers use these periods to address individual/classroom needs. (Math Fluency, Word Problems & Strategies, Writing Support, Phonics, Comprehension, etc.)
- ★ **WAGGLE:** NEW online program linked to MAP scores to provide students with an individualized learning path based on their needs.
- ★ **Math:** Reflex Math (online platform for students to work on math fluency), Additional Teaching Support for Math (Grades 3-5) allows more opportunities for differentiation
- ★ **STARS (Basic Skills):** Students that scored a 1, 2, or 3 and/or score lower than 40% on MAPs are eligible for basic skills (as long as they are not in special education).
- ★ Continue our H.I.T. program with additional (but limited) funding for 24-25 school year.
- ★ **3rd & 4th ELA Models:** Restructured to allot more time for individual support. Additional instructional support during daily ELA blocks.
- ★ **Mid-Year Student Meetings**





Thank you!



Sea Devils

$$\sqrt{\frac{3}{4}}$$

