

Compare:

1. FAST SHUTTER SPEED: Set the camera to 1/250 sec and take at least 3 photos.
2. SLOW SHUTTER SPEED: Set the camera to 1/6 sec and take at least 3 photos.



Choose S or Tv for the shutter speed priority setting on your DSLR camera

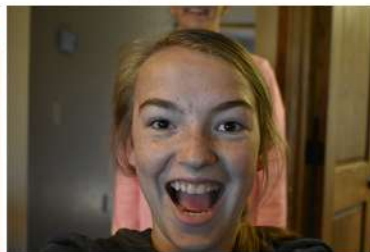


Hold your camera at arm's length keeping it steady.

Give yourself a slow spin in your chair and begin taking multiple photos.

Boring classroom.

Fast Shutter Speed:
1/250 sec
(freezes background)



Disney World.

Slow Shutter Speed:
1/6 sec
(blurs background)

