



SHERIDAN
SCHOOL DISTRICT

**Sheridan School District
Comprehensive
Substance Use
Prevention Plan**

Updated: May, 2023

Table of Contents

Introduction.....3

Board Policies.....5

MTSS Framework.....6

Summary of Tiered Supports.....7

Curriculum and Education.....12

Communication and Campaigns.....13

Mental and Behavioral Health.....14

Staff Training.....15

Policies and Procedures.....16

Sheridan School District

Comprehensive Substance Use Prevention Plan

Introduction

Sheridan School District is located in the West Willamette Valley. Faulconer-Chapman and Sheridan High School serve approximately 700 students in grades K-12. In Oregon, each school district must develop a comprehensive drug and alcohol use prevention plan as a part of the Kindergarten through 12th grade Health Instructional Program.

The Sheridan School District Comprehensive Substance Use Prevention Plan (CSUPP) has been developed in accordance with a series of Oregon Senate Bills, Oregon Revised Statutes and Oregon Administrative Rules. This plan primarily encompasses:

- OAR 581-022-2045 (Prevention Education in Drugs and Alcohol)
- OAR 581-022-1140 (Equal Educational Opportunities)
- OAR 581-022-1210 (District Curriculum, instruction of infectious diseases, including HIV/AIDs and Hepatitis B/C)

In addition, many secondary state sources are also reflected in this plan, including:

- ORS 339.351-364 (Harassment, Bullying, Cyber-bullying and Intimidation)
- OAR 581-022-1510 (Comprehensive Guidance and Counseling)
- SB 79 (CPR Instruction for grades 7-12)

Effective teaching and learning provides opportunities for each student to make sense and deepen their understanding of health, so they can identify, practice, and maintain health-enhancing behaviors. Content standards, adopted by the State Board of Education, include health concepts, accessing information, self-management, analyzing influences, interpersonal communication, goal setting, decision-making, and self-advocacy.

The CSUPP is a living document and will be reviewed and updated at least annually to reflect current research and be consistent with State Board adopted Health Education Academic Content Standards as per Oregon Department of Education requirements

Acknowledgements:

The Sheridan School District would like to thank the following people for their contributions to the Substance Use Prevention Plan development process:

Substance Use Prevention Task Force Members:

- | | |
|------------------|--------------------|
| ● Dorie Vickery | ● Heidi Fernandez |
| ● Jason Hohnbaum | ● Josh Rojas |
| ● Adam DeLatte | ● Jeremy Brown |
| ● Melissa Love | ● Jeffrey Ledet |
| ● Alanna Russell | ● Patrick Schrader |

- Andrew Dunn
- Tim Hart
- Michael Griffith
- Zoe Pearson

- Shannon Stanton
- Bethany Mason
- Joseph Lucia
- Linda Gehrke

Sheridan School District Board of Directors:

- Samantha Bagby
- Michael Griffith
- Larry Diebel
- Scott Burke
- Judy Breeden

Sheridan School Board Policies Related to Substance Use Prevention

Drug, Alcohol and Tobacco Prevention, Health Education

Code: IGAEB

Adopted: 4/16/08 (**Revised/Readopted:** 6/20/12, 3/16/16)

Use of Tobacco Products, Alcohol, Drugs, or Inhalant Delivery Systems

Code: JFCG/JFCH/JFCI

Adopted: 1/21/04 (**Revised/Readopted:** 6/20/12, 8/19/15, 1/17/18)

Anabolic Steroids and Performance Enhancing Substances

Code: IGAEC

Adopted: : 1/21/09 (**Revised/Readopted:** 6/20/12)

Medications

Code: JHCD/JHCDA

Adopted: 3/21/18 (**Revised/Readopted:** 9/16/20)

Multi-Tiered Systems of Support Framework

Multi-tiered Systems of Support (MTSS) is a framework that provides evidence-based support and interventions to students based on their level of need. This approach allows the district to identify students at increased risk for substance use and offer targeted interventions in addition to universal interventions intended for all students.

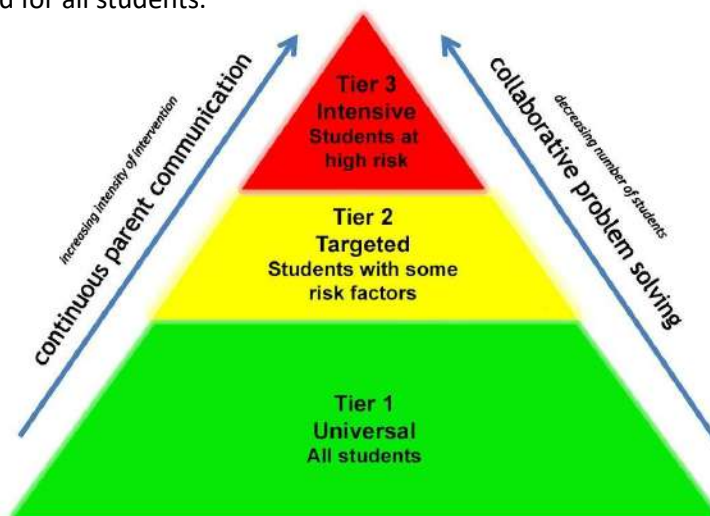


Image from <https://www.aak8.org/apps/pages/aa-sss-rti>

Tier 1 components involve universal prevention efforts that address all students. This includes K-12 curriculum, social-emotional education, district policies, staff training, and educational resources for families.

Tier 2 components include assessment and intervention for students at increased risk for substance use. Risk factors may include:

- Family history of substance use
- Favorable parental attitudes towards the behavior
- Poor parental monitoring
- Parental substance use
- Family rejection of sexual orientation or gender identity
- Association with substance using peers
- Lack of school connectedness
- Low academic achievement
- Childhood sexual abuse
- Mental health issues

Tier 2 interventions include mental health and counseling services, behavioral support services, peer groups, multidisciplinary support teams, and resources for families.

Tier 3 interventions target students who have been identified as using substances. These interventions are supportive of student recovery and school re-entry as opposed to disciplinary. Tier 3 interventions include cessation services, individualized behavioral support, and emergency response protocol.

Summary of Tiered Supports

CURRICULUM AND EDUCATION			
Intervention	Resources	Involved Parties	MTSS Tier(s)
K-5 Instruction	Great Body Shop Too Good for Drugs	<ul style="list-style-type: none"> • PE/Health teachers • Classroom teachers • Nurse 	Tier 1 - Universal
6-8 Instruction	McGraw Hill Health Curriculum CATCH My Breath, Stanford Tobacco Prevention Toolkit , Truth Initiative , Song for Charlie , Mind Matters	<ul style="list-style-type: none"> • PE/Health teachers • Classroom teachers • Nurse • LPHA 	Tier 1 - Universal
9-12 Annual Instruction	McGraw Hill Health Curriculum CATCH My Breath, Stanford Tobacco Prevention Toolkit , Truth Initiative , Song for Charlie , Mind Matters	<ul style="list-style-type: none"> • PE/Health teachers • Classroom teachers • Counselors • Nurse • LPHA 	Tier 1 - Universal
Guest speakers	Drive to Save Lives Yamhill County Public Health	<ul style="list-style-type: none"> • Former Sheridan students • Hired guest speakers 	Tier 1 - Universal
K-5 SEL	PAX program	<ul style="list-style-type: none"> • PE/Health teachers • Classroom teachers • Counselor 	Tier 1 - Universal / Tier 2 - Targeted
6-8 SEL	McGraw Hill Health Curriculum	<ul style="list-style-type: none"> • PE/Health teachers 	Tier 1 - Universal /

		<ul style="list-style-type: none"> Classroom teachers Counselor 	Tier 2 - Targeted
9-12 SEL	McGraw Hill Health Curriculum	<ul style="list-style-type: none"> PE/Health teachers Classroom teachers Counselor 	Tier 1 - Universal / Tier 2 - Targeted
Alternative-to-Suspension / Cessation Programs	INDEPTH N-O-T Healthy Futures	<ul style="list-style-type: none"> Nurse Counselor LPHA 	Tier 3- Indicated
COMMUNICATION / CAMPAIGNS			
Intervention	Resources	Involved Parties	MTSS Level(s)
Flyers and posters	Stanford Tobacco Prevention Toolkit Song for Charlie Talk. They hear you.	<ul style="list-style-type: none"> Nurse Counselors Health teachers Administrators 	Tier 1 - Universal
Social Media	Song for Charlie Above the Influence Talk. They hear you.	<ul style="list-style-type: none"> Nurse Counselors Health teachers Administrators Social media managers 	Tier 1 - Universal
Parent communication (info nights, handouts, trainings)	Stanford Tobacco Prevention Toolkit CATCH Parent Toolkit Talk. They hear you. Fentanyl Parent Handout	<ul style="list-style-type: none"> Nurse Counselors Health teachers LPHA 	Tier 1 - Universal / Tier 2 - Targeted / Tier 3 - Indicated
District website	Stanford Tobacco Prevention Toolkit	<ul style="list-style-type: none"> Nurse District website manager 	Tier 1 - Universal / Tier 2 - Targeted /

	CATCH Parent Toolkit Parent Resource List Just Think Twice	<ul style="list-style-type: none"> ● LPHA ● Counselors ● Administrators 	Tier 3 - Indicated
MENTAL AND BEHAVIORAL HEALTH			
Intervention	Resources	Involved Parties	MTSS Level(s)
School Counselors		<ul style="list-style-type: none"> ● Counselors ● Administrators 	Tier 1 - Universal / Tier 2 - Targeted
Mental Health Therapists	Yamhill County Public Health	<ul style="list-style-type: none"> ● LPHA ● Administrators 	Tier 2 - Targeted/ Tier 3 - Indicated
Small Groups		<ul style="list-style-type: none"> ● Counselors ● LPHA ● Administrators 	Tier 2 - Targeted/ Tier 3 - Indicated
Anonymous Reporting Systems	SPEAK UP FCS SHS Reporting System	<ul style="list-style-type: none"> ● Administrators ● Behavior support staff 	Tier 1 - Universal / Tier 2 - Targeted / Tier 3 - Indicated
Substance Abuse Counselor	Yamhill County Public Health	<ul style="list-style-type: none"> ● LPHA ● Administrators 	Tier 3 - Indicated
STAFF TRAINING			
Intervention	Resources	Involved Parties	MTSS Level(s)
Substance Use Training	Song for Charlie	<ul style="list-style-type: none"> ● Classroom teachers ● Coaches ● Administrators 	Tier 1 - Universal
Implicit Bias Training	NIH Implicit Bias Training	<ul style="list-style-type: none"> ● All staff 	Tier 1 - Universal / Tier 2 - Targeted /

			Tier 3 - Indicated
Facilitator Training	CATCH Training INDEPTH Facilitator Training	<ul style="list-style-type: none"> • PE/Health teachers • Classroom teachers • Counselors • Nurse 	Tier 1 - Universal / Tier 2 - Targeted / Tier 3 - Indicated
Mental Health Training	Mental Health First Aid Resources for Educators	<ul style="list-style-type: none"> • All staff 	Tier 1- Universal/ Tier 2- Targeted
Narcan Administration Training	Yamhill County Public Health	<ul style="list-style-type: none"> • LPHA • Nurse • Trained Responders 	Tier 3 - Indicated
POLICIES AND PROCEDURES			
Intervention	Resources	Involved Parties	MTSS Level(s)
District policy indicating consequences for using and/or selling illegal substances on school grounds.	School Board Policy JFCG/JFCH/JFCI	<ul style="list-style-type: none"> • Administrators • School Board 	Tier 1 - Universal
Vape sensors		<ul style="list-style-type: none"> • Administrators • Behavior support staff 	Tier 1 - Universal
Disciplinary protocol	See <i>Alternative-to-Suspension/Cessation Programs</i>	<ul style="list-style-type: none"> • Administrators 	Tier 3 - Indicated
Narcan administration & Emergency response	Naloxone Protocol	<ul style="list-style-type: none"> • Nurse • Trained Responders 	Tier 3 - Indicated

Partnerships and Additional Resources

Yamhill County Substance Use Services: <https://hhs.co.yamhill.or.us/substanceuseservices>

Grand Ronde Health and Wellness

- Alisha Parks Shell (Community Health Manager): alisha.parksshell@grandronde.org

Residential treatment facilities in Oregon:

- [ADAPT](#): 541- 672- 2691
- [Madrona Recovery](#): 503-749-0200
- [NARA Youth Residential Treatment Center](#): 971-274-3757
- [Rimrock Trails](#): 888-532-6247

Recovery Resources:

- SAMHSA National Helpline – 1-800 662 HELP (4357)
- [Oregon's Recovery High School](#)

Curriculum and Education

Substance use curriculum is consistent with requirements listed in [ORS 581-022-2045](#).

K-5 Education

Teachers provide age-appropriate lessons on these topics using *The Great Body Shop* curriculum from Children's Health Market (<https://www.thegreatbodyshop.net/>). Supplemental lesson materials may be incorporated from other programs. Guest speakers such as the nurse, school counselor, or community partners may assist with instruction as permitted by Oregon Department of Education and district policies.

6-8 Education

Teachers provide age-appropriate lessons on these topics using *The Teen Health grades 6-8* curriculum from McGraw Hill (mheducation.com). Supplemental lesson materials may be incorporated from other programs. Guest speakers such as the nurse, school counselor, or community partners may assist with instruction as permitted by Oregon Department of Education and district policies.

9-12 Education

Teachers provide age-appropriate lessons on these topics using *The Teen Health grades 9-12* curriculum from McGraw Hill (mheducation.com). Supplemental lesson materials may be incorporated from other programs. Guest speakers such as the nurse, school counselor, or community partners may assist with instruction as permitted by Oregon Department of Education and district policies.

Drug prevention education is provided as part of the 10th grade health curriculum and at least annually for all 9-12 graders. Annual instruction may be provided by district staff or guest speakers.

Communication and Campaigns

School-Wide Messaging

School-wide messaging campaigns may include school-wide distribution of age-appropriate posters and flyers that emphasize fact-based information. Messaging tactics will avoid shaming or fear-based approaches. School personnel and community partners may host school-based events, such as tables or assemblies, to share prevention-focused information with students.

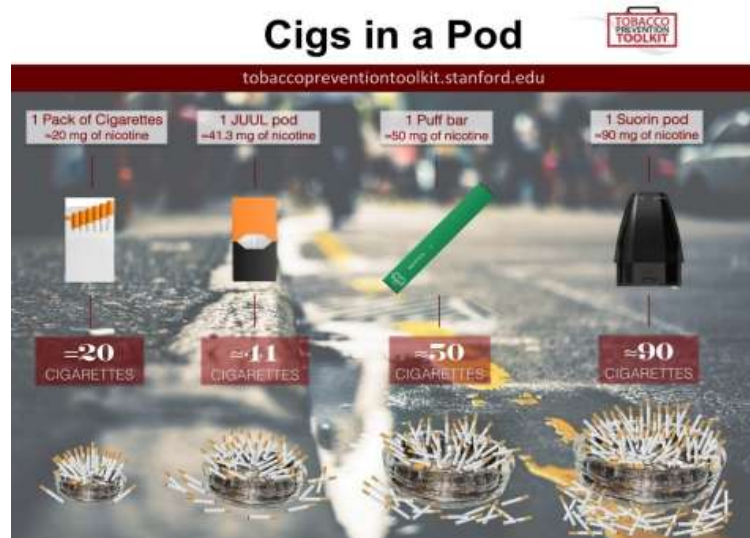


Fig. 1) Sample campaign poster taken from the [Stanford Tobacco Prevention Toolkit](http://tobaccopreventiontoolkit.stanford.edu)

Family & Community Messaging

The district will communicate with families regarding drug and alcohol-related classroom instruction, parent and student resources, and upcoming events using the established school communication methods. The school may collaborate with community partners to host family events focused on substance use prevention and treatment.

Mental and Behavioral Health

Social Emotional Learning

At the elementary level, each class has a half hour dedicated time for Social Emotional Learning. The teachers have been trained in PAX - The Good Behavior Game and they have access to the Sanford Harmony Curriculum.

Secondary teachers use the Character Strong curriculum in their advisory class periods.

School Counselors

The district maintains one full-time counselor per building. School counselors can provide behavioral support, assist with drug and alcohol instruction, and connect students with mental health resources.

Yamhill County Public Health Therapists

The district contracts with Yamhill County Public Health to provide one full-time Mental Health Therapist to support students as well as a Drug and Alcohol Counselor that provides services to students one day per week.

Small Groups

Small groups are led by Yamhill County Public Health staff and/or school counselors to provide interventions for students identified as at risk for substance use or other mental and behavioral health concerns.

Student Reporting

Faulconer-Chapman School utilizes an anonymous reporting system for 6-8 students to report concerns of substance abuse or other mental/behavioral health issues. When the anonymous form is completed, a notification is sent to administrators and behavioral support staff who then follow-up on the concern.

Sheridan High School utilizes a referral system for students, staff and family to direct concerns regarding behavioral and mental health to an interdisciplinary "CARE Team". The CARE Team meets regularly to review referrals and develop interventions to support students.

Staff Training

All staff will receive annual drug and alcohol training led by school health personnel, administrators, or community partners. Staff facilitators of supplemental or therapeutic programs will receive training prior to delivering instruction or providing treatment and as needed to maintain compliance with program requirements. Staff may receive additional training throughout the year related to mental/behavioral health.

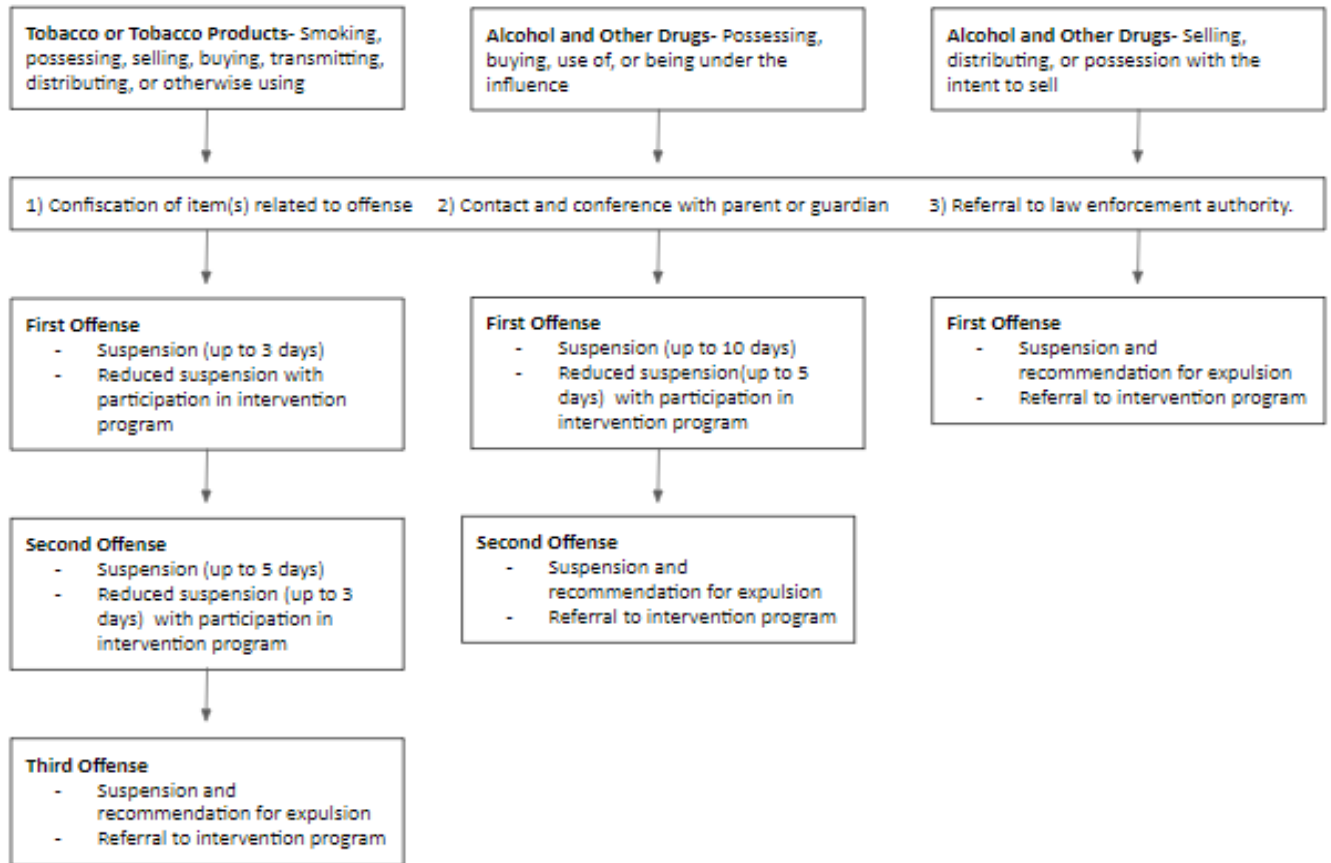
Policies and Procedures

Disciplinary Protocols

Discipline for possession, use, distribution or sale of tobacco, alcohol, drugs, or inhalant delivery systems will be consistent with School Board Policy JFCG/JFCH/JFCI. The following table and figure outlines guidelines that the school district may use when addressing substance use.

OFFENSE	PROGRESSIVE SEQUENCE OF CONSEQUENCES <i>Any level of consequences may be administered for any offense taking into consideration the age of and the past behavior of the student.</i>
Alcohol and Other Drugs- <u>Possessing, buying, use of, or being under the influence</u> of alcoholic beverages, inhalants, including solvents and other dangerous substances; or any other drug as defined by, but not necessarily limited to, the Uniform Controlled Substance Act, ORS 475.005, including look-alikes being represented as being a controlled substance and/or misuse of prescription or non-prescription drugs.	<ul style="list-style-type: none"> ● Confiscation of item(s) related to offense. ● Contact and conference with parent or guardian. ● Referral to law enforcement authority. ● District level Disciplinary Hearing ● Suspension, in or out of school, for up to 10 days. ● Reduced suspension and participation in an intervention program as determined by Yamhill County Health and Human Services and/or the School District.
Alcohol and Other Drugs- <u>Selling, distributing, or possession with the intent to sell</u> alcoholic beverages, inhalants, including solvents and other dangerous substances; or any other drug as defined by, but not necessarily limited to, the Uniform Controlled Substance Act, ORS 475.005, including look-alikes being represented as being a controlled substance and/or misuse of prescription or non-prescription drugs.	<ul style="list-style-type: none"> ● Confiscation of item(s) related to offense. ● Contact and conference with parent or guardian. ● Referral to law enforcement authority. ● District level Disciplinary Hearing ● Suspension, in or out of school, for up to 10 days. ● Continuing suspension and a recommendation for expulsion. ● Possible recommendation for diversion as determined by Yamhill County Health and Human Services and/or the School District.
Tobacco or Tobacco Products- <u>Smoking, possessing, selling, buying, transmitting, distributing, or otherwise using</u> tobacco or tobacco products and to those substances represented as being tobacco and tobacco products (such as e-cigarettes and their contents).	<ul style="list-style-type: none"> ● Confiscation of item(s) related to offense. ● Contact and conference with parent or guardian. ● Referral to law enforcement authority. ● Suspension, in or out of school, for up to 5 days. ● District level Disciplinary Hearing ● Reduced suspension and participation in an intervention program as determined by Yamhill County Health and Human Services and/or the School District. ● Continuing suspension and a recommendation for expulsion.

Disciplinary Flowchart



Naloxone Administration

Designated staff will receive training in naloxone administration by the Yamhill County Health Department or school district nurse. Naloxone maintenance, storage and administration will be conducted as outlined in the district [Naloxone Protocol](#).



Vape Sensors

Vape sensors are located in the bathrooms and locker rooms at FCS and SHS. When sensors are triggered, an immediate notification is sent to designated staff members who investigate the incident per district protocol.