

PERSONAL SYMBOLS

SKETCHBOOK COVERS

Meet the ARTIST...

What makes us, us?

15 Personal Symbols Worksheet

On the worksheet provided, draw and color (using non-traditional colors), 15 symbols that represent me. Color the background in with a solid color that works with the image. What are my interests? Who am I?



15 Personal Symbols Worksheet

- Don't overcomplicated your image.
- Outline in black before coloring.
- If lost, check out the prompt.



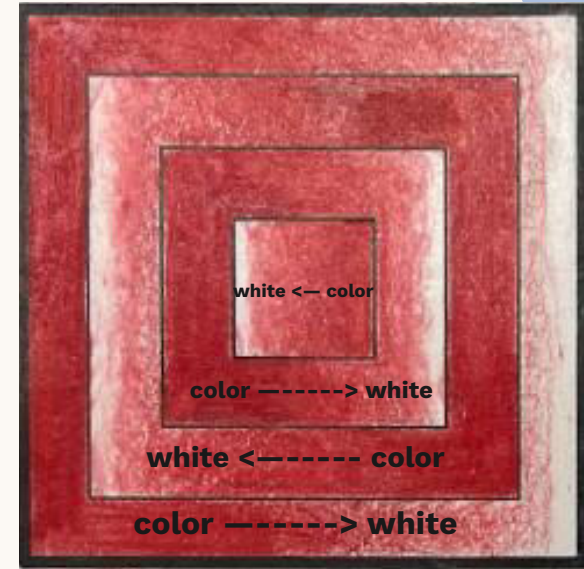
● Personal Symbols Prompts

- Hobbies/Sports/Activities I enjoy are...
- Things I do with my family are...
- The foods and sweet treats that excite my taste buds are...
- Some of my favorite animals are...
- Some sweet moments and memories are...
- I plan for ... in the future.
- My favorite subjects in school are...
- My most used or favorite emojis are...
- Things I would bring camping are...
- Things I would bring on vacation are...
- When I am at home, I enjoy doing...
- The goal I have for myself is...
- My talents and skills include...
- I like to buy...
- I take pride in...
- My friends would describe me as someone who enjoys...



SQUARE ILLUSION

- You will use a color to white transition.
- You will invert each square area to create this illusion



BARS ILLUSION

- You transition blend 2 colors in each larger barred area. You can use any of the transitions from the color transition worksheet.
- Color 1 transitions into color 2 and then transitions back into color 1.



Color 1 → color 2 → color 1

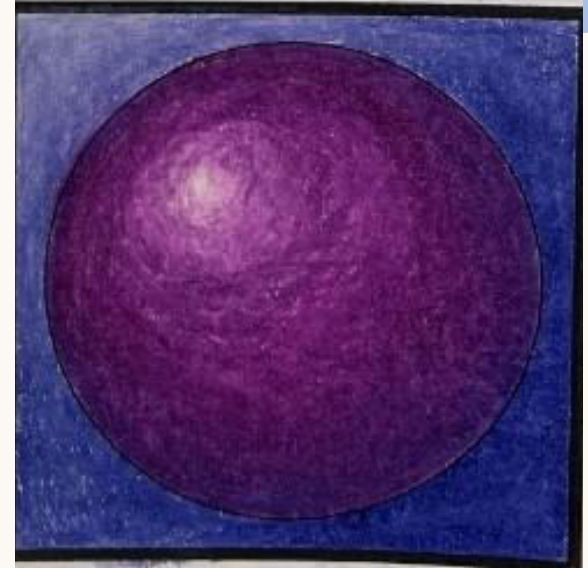
CIRCLE ILLUSION

- You will use a color to white transition.
- The outer part of each color will be most intense to the color and as it moves inward, it should transition lighter.



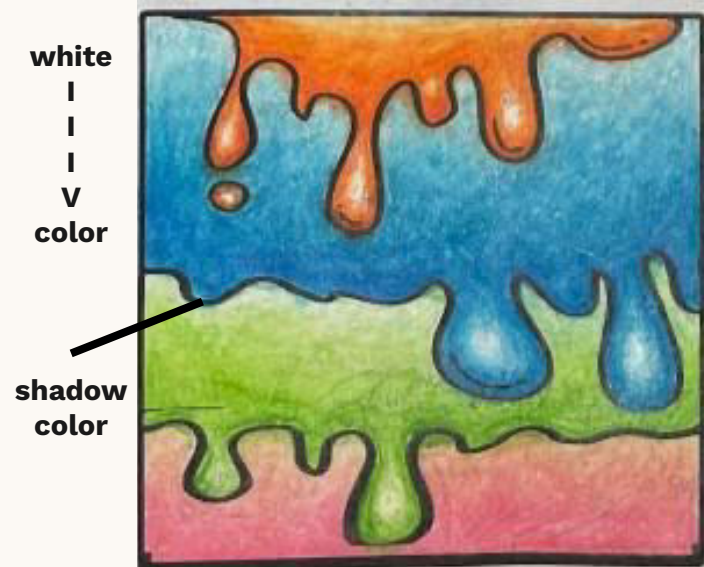
CREATING A SPHERE

- Most outer area is the darkest. Combine your color with with it's a little black
- Outer middle area is the original color.
- Inner middle areas are the original color plus 1 and 2 layers of white.
- Most inner area is white with one layer of the original color and more white



DRIP GRADIENT

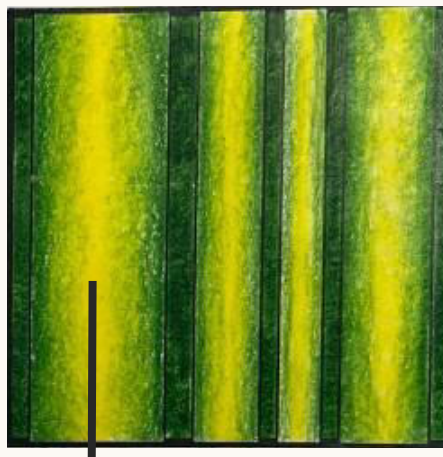
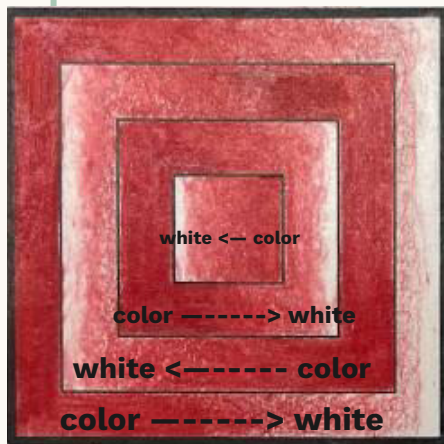
- Use a color to white transition. In each drip area, whiter areas are at the top and progressive get more intense in color.
- In each individual drip there should be a transition to convey a highlight.
- Finish off by adding the light touch of black shadow shading color at the bottom of each drip.



SUBTLE HIGHLIGHTS & SHADOWS

- Use subtle shadow and highlights to give form to the ribbons.
- Highlight areas are in the middle areas.
- Shadows are along the upper and lower edges. Shadows are also in the back areas of the ribbon.
- Original colors are along the outer middle areas.

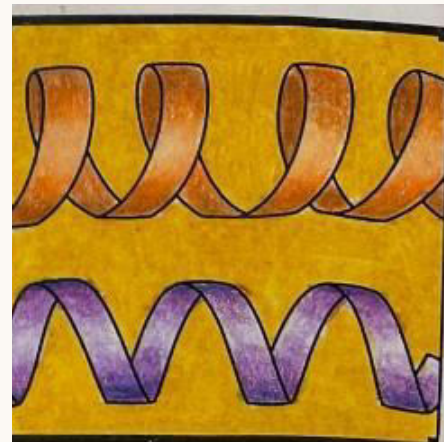




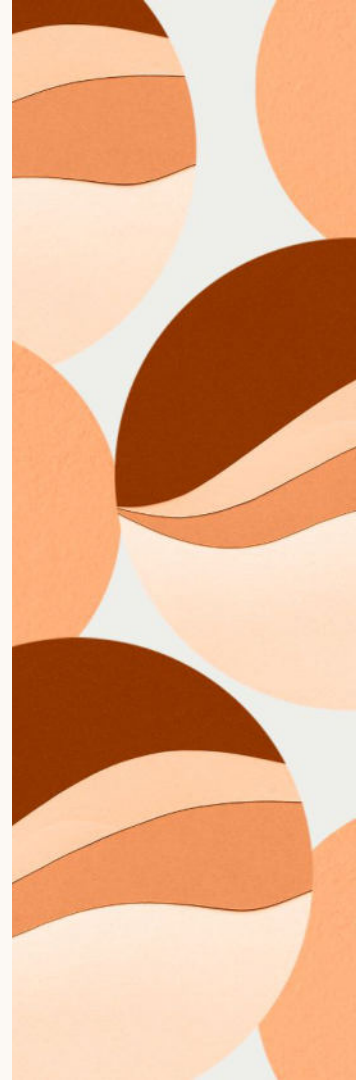
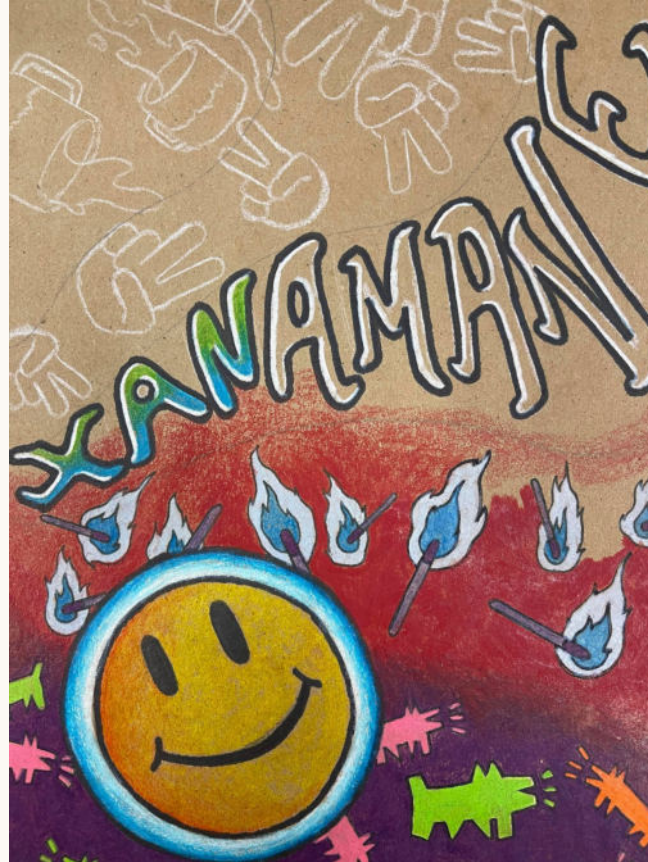
Color 1 → color 2 → color 1



white
|
|
v
color



Sketchbook Covers (100 pt.)



ART KNOWLEDGE

RHYTHM & REPETITION



● RHYTHM

Rhythm is a principle of design that suggests movement or action. Rhythm is usually achieved through repetition of lines, shapes, colors, and more. It creates a visual tempo in artworks and provides a path for the viewer's eye to follow.



REPETITION

a recurrence of a particular line, pattern, shape, or other visual elements in a single or part of the series.



● YAYOI KUSAMA

Yayoi Kusama is a Japanese artist who is sometimes called 'the princess of polka dots'. Although she makes lots of different types of art – paintings, sculptures, performances and installations – they have one thing in common, DOTS.



● YAYOI KUSAMA



● RENE MAGRITTE

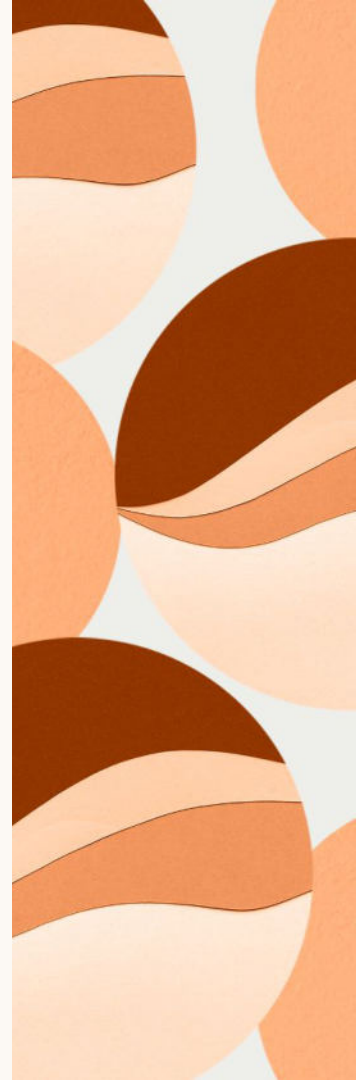
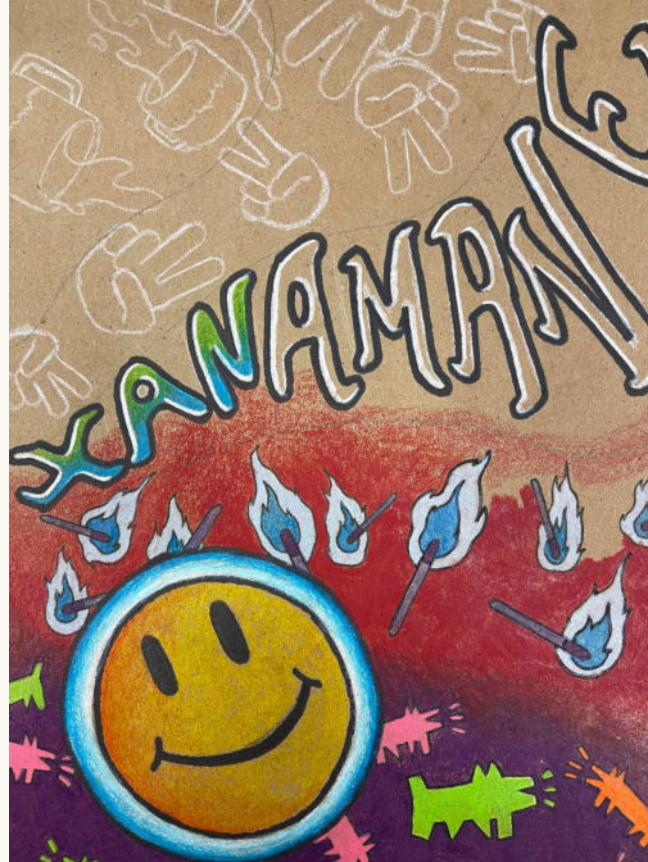
Magritte was a Belgian surrealist artist, who became well known for creating a number of witty and thought-provoking images. Often depicting ordinary objects in an unusual context, his work is known for challenging observers' preconditioned perceptions of reality.



RENE MAGRITTE

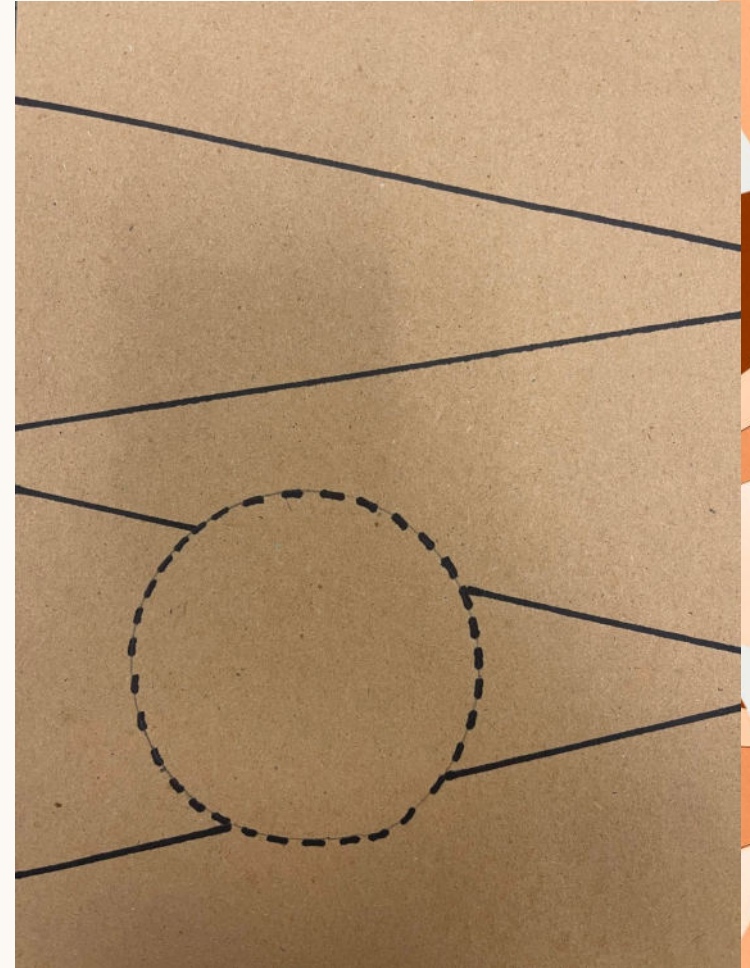


Sketchbook Covers (100 pt.)

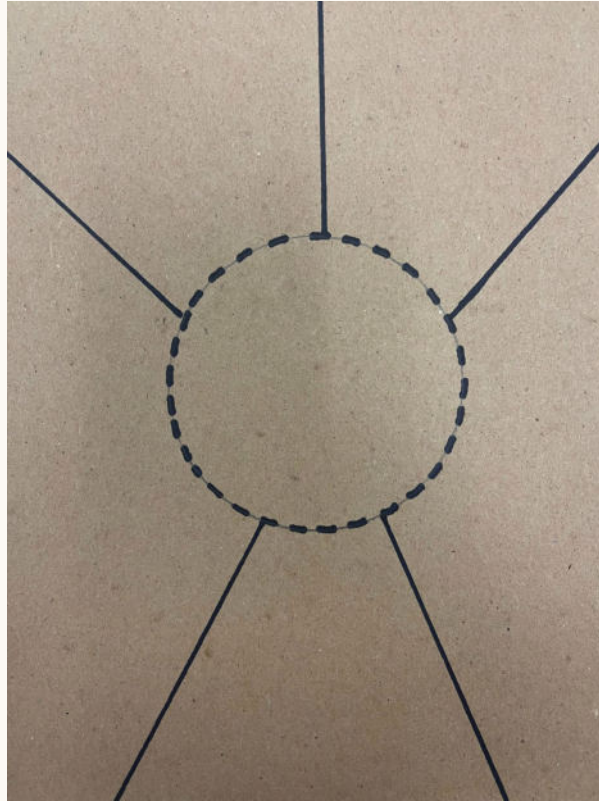
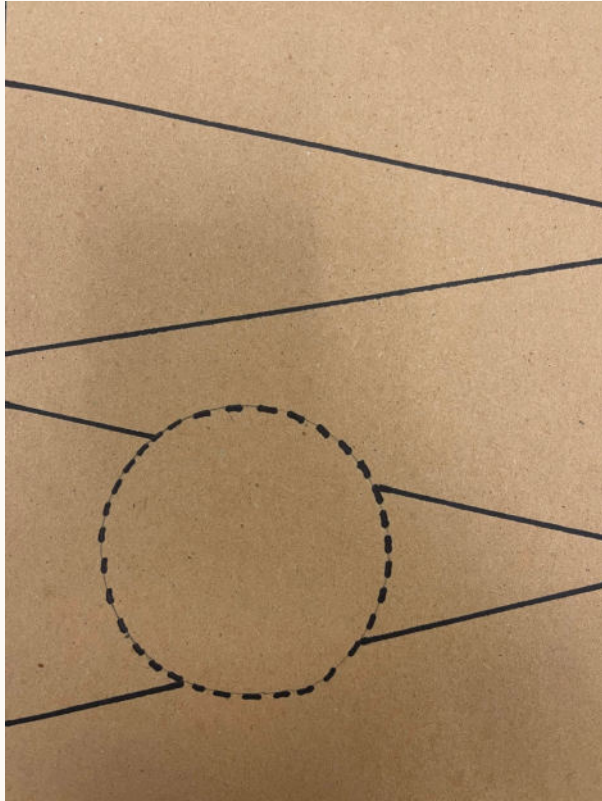


● Paper Division

- Use white color pencil.
- Trace out 1 circular white area.
- Separate background into 5 areas.
 - Areas can be geometric, organic, or both.

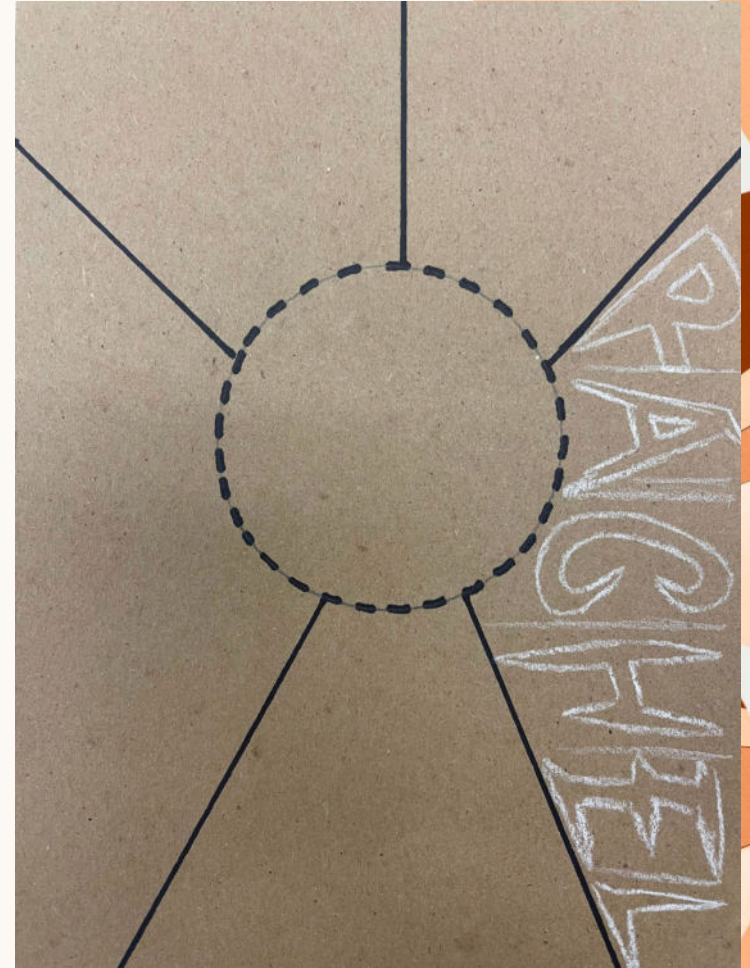


● Paper Division Examples



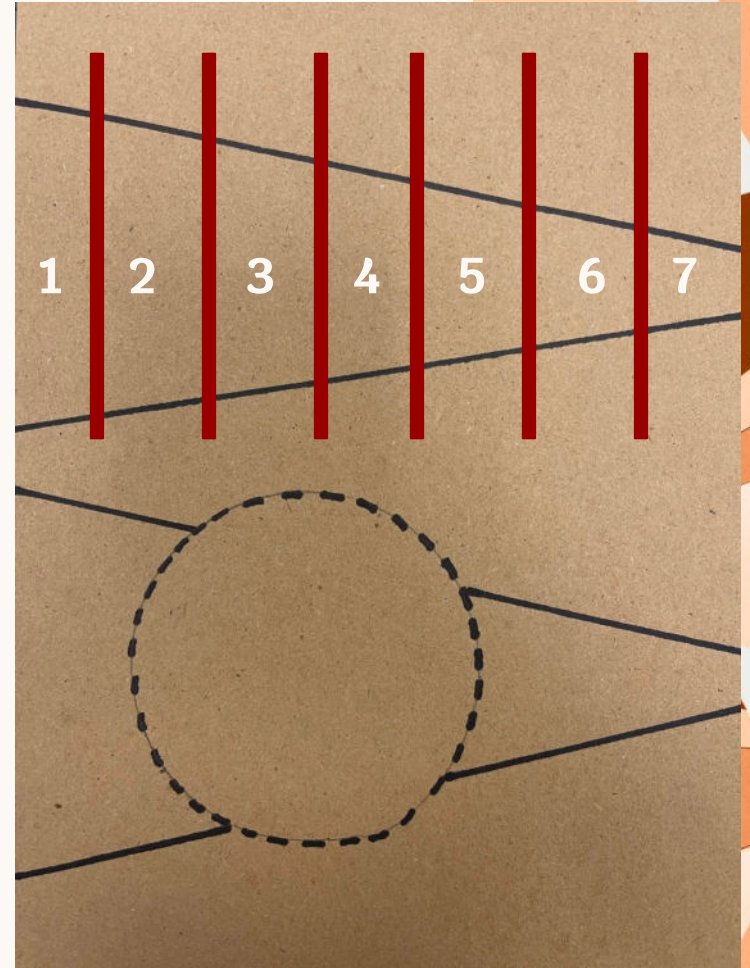
● Name Area

- 1 of the background areas will be dedicated to your name.
- Your name should take up majority of the area.
- Be playful with your font.
- Use a white color pencil.



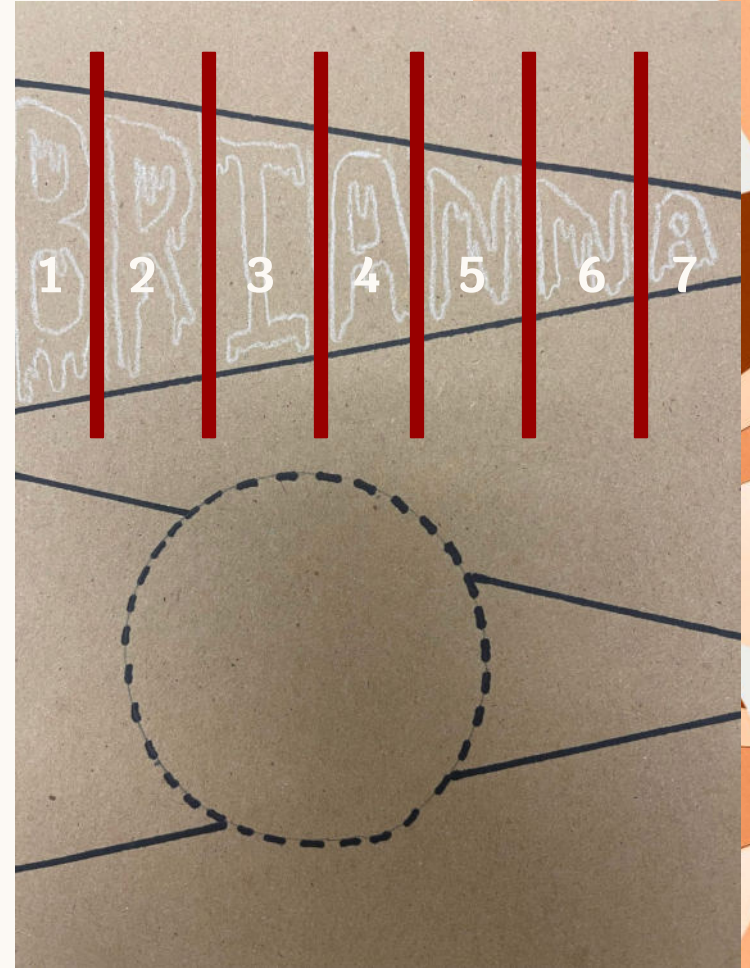
● Lettering spaces

- Similarly divide your space into the number of spaces needed to fit in your name.
- Let's say we are trying to fit in a 7 letter name.



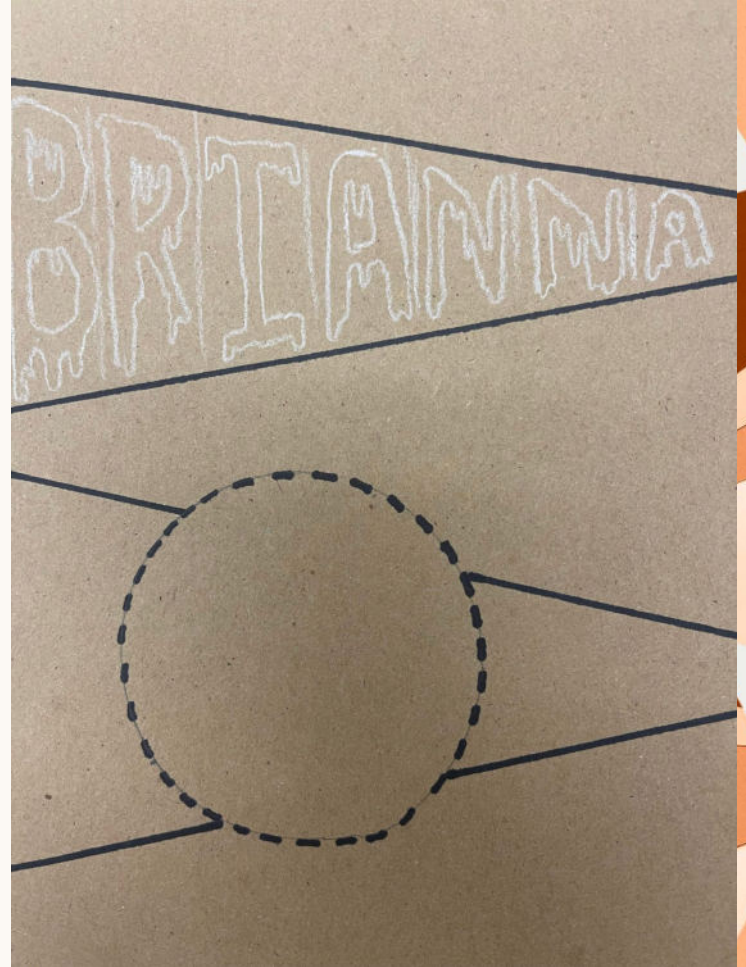
● Lettering spaces

- Similarly divide your space into the number of spaces needed to fit in your name.
- Let's say we are trying to fit in a 7 letter name.

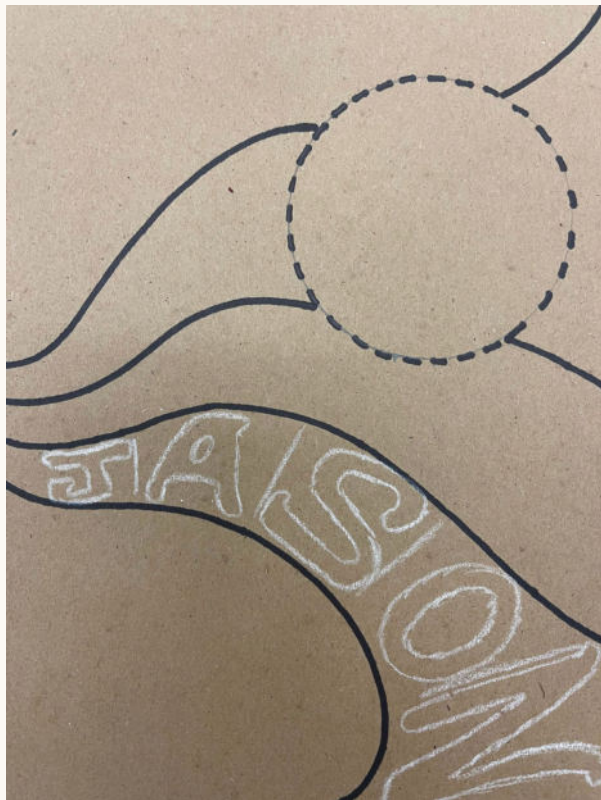
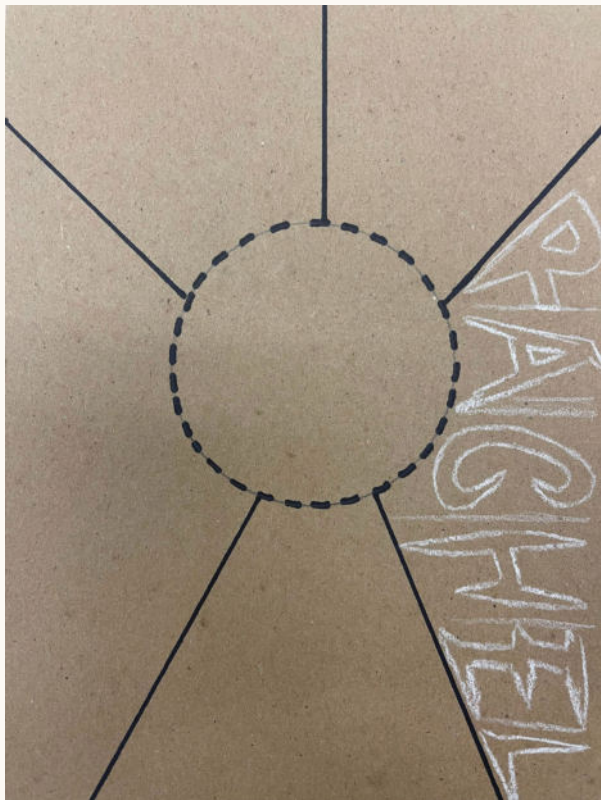


● Lettering spaces

- Erase your division lines

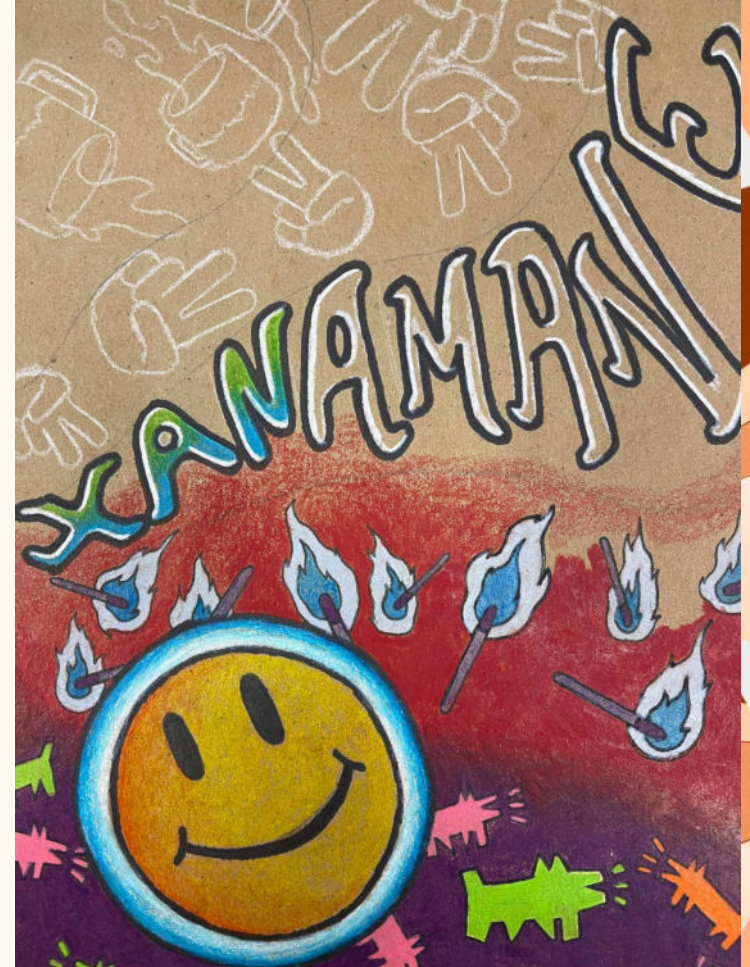


● Name Area



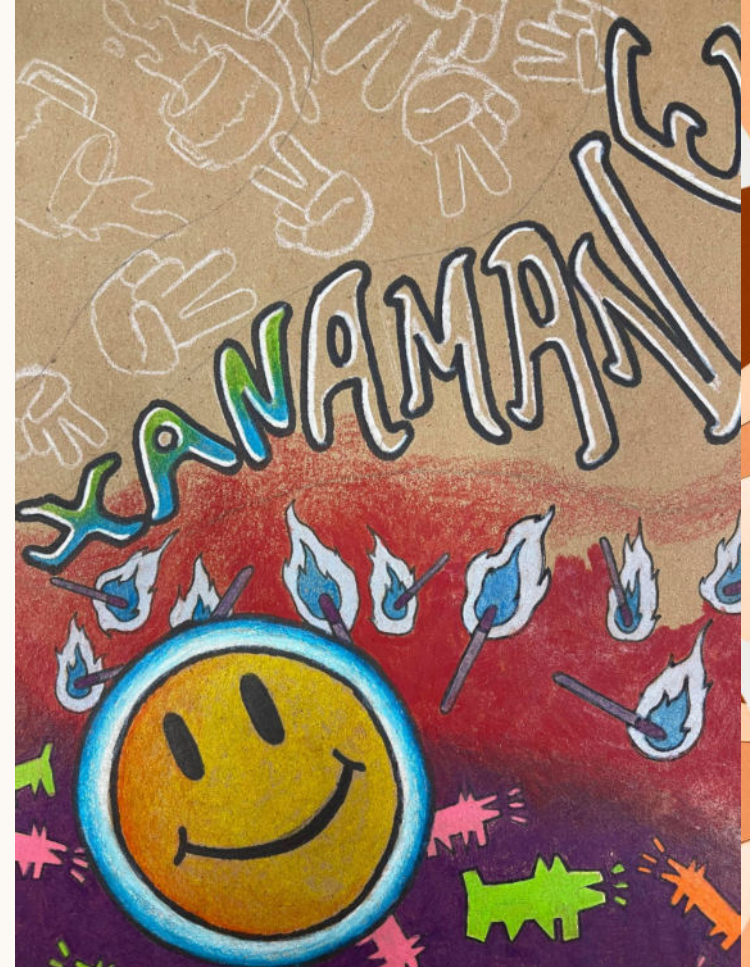
● Symbol Areas

- Select the best 5 symbols that represent you the most and the most interesting.



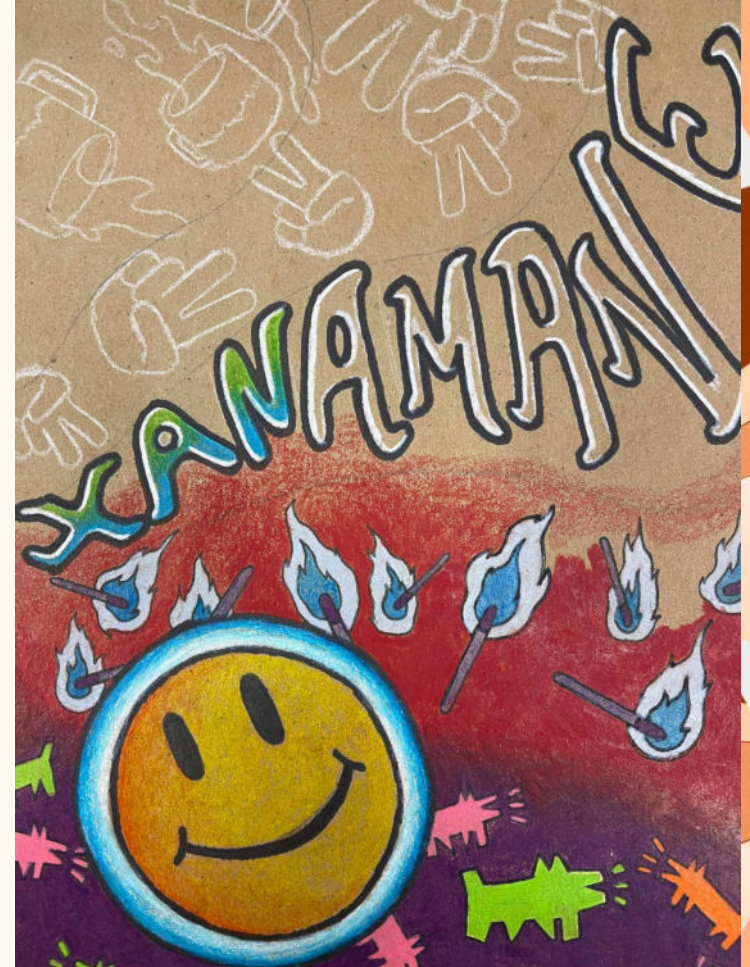
● Symbol Areas

- In the remaining areas, you will draw your symbols of choice.
- You are selecting 5 symbols.
- Everything will get outlined in sharpie.
- Background color blending is optional. You may divide your background areas with a sharpie as well.



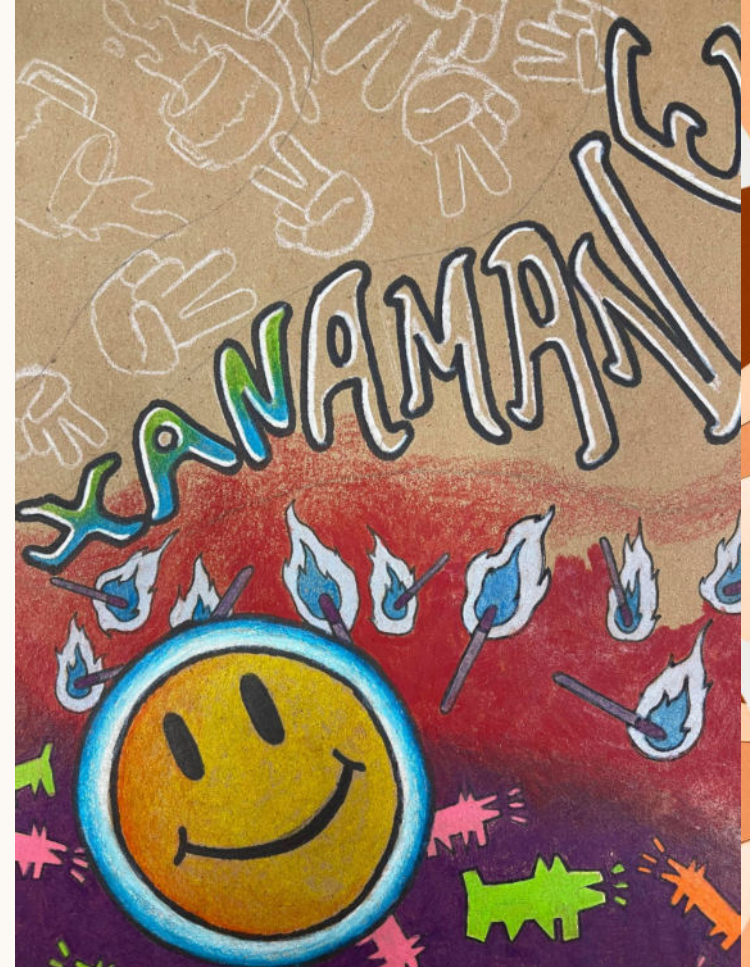
● Symbol Areas

- Use different sizes of the same symbol to help you work stand out.
- Change direction.
- Apply color transition to your symbols.
- Vary in thin and thick sharpie lines. Thicker lines will stand out. Works well with your name and large symbols



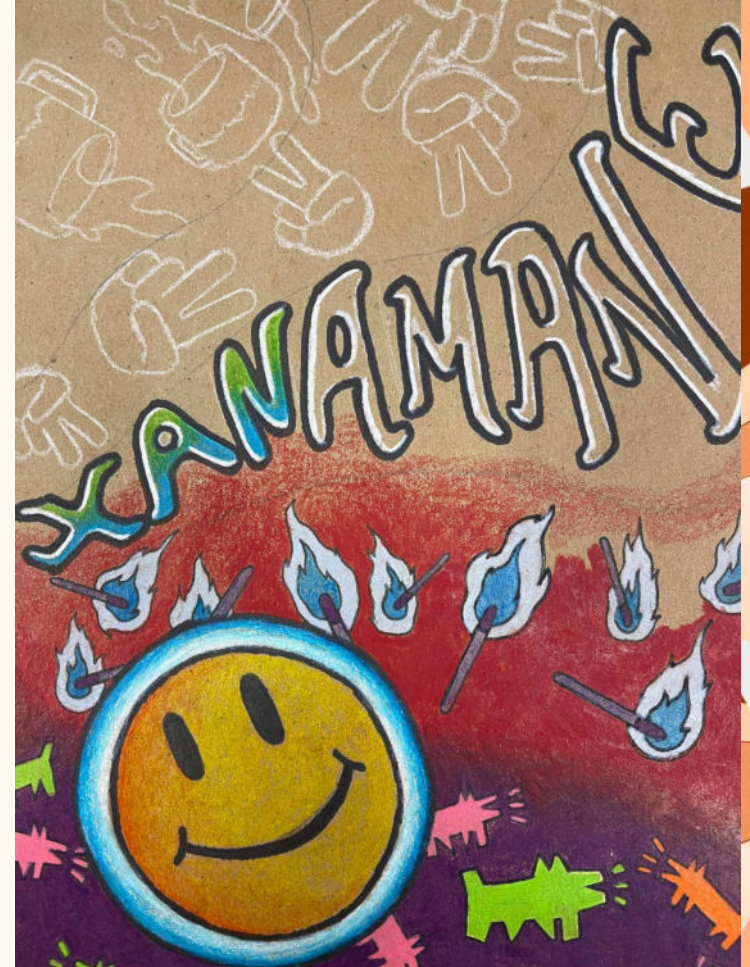
● Symbol Areas

- Symbol areas will be divided as such.
 - **3-4 of same symbol**
 - **5-6 of same symbol**
 - **7-9 of same symbol**
 - **11-more of same symbol**



● Grading Checklist 100pts.

- 3 effective areas of color transitioning
- Use of 5 well designed symbols in response to repetition.
- Strong emphasized symbol (no smaller than your fist)
- 50% of space is being used by symbols/name
- Neatness & completeness





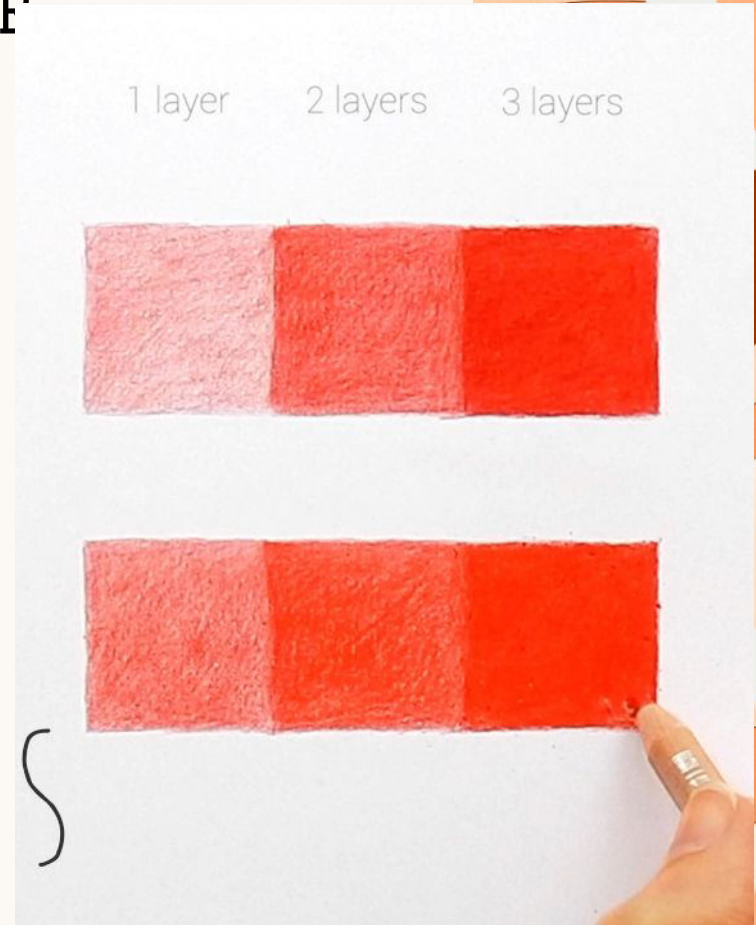
AGENDA: 9/5/23



- **BELLRINGER:**
 - **TUESDAY TINT PRACTICE**
- **15 PERSONAL SYMBOLS WORKSHEET**
 - **DUE TODAY, 9/5/23**
- **SKETCHBOOK COVER PROJECT**
 - **STUDIO DAY 0/4**

BELLRINGER: TINTING A COLOR

- **SCUMBLE! SCUMBLE! SCUMBLE**
- Even in all areas
- Light layer of **WHITE**
- Light layer of **COLOR**
- Medium layer of **WHITE**
- Medium layer of **COLOR**
- Heavy layer of **WHITE**
- Heavy layer of **COLOR**
- (optional **WHITE** layer)





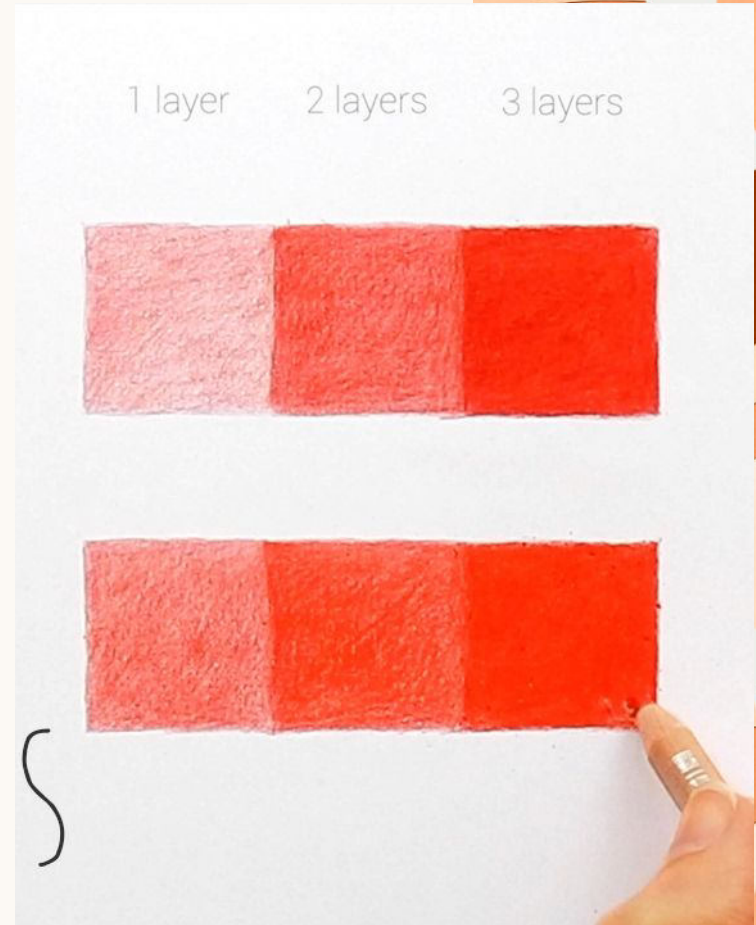
AGENDA: 9/6/23



- **BELLRINGER:**
 - **WEDNESDAY SHADE PRACTICE**
- **15 PERSONAL SYMBOLS WORKSHEET**
 - **DUE YESTERDAY, 9/5/23**
- **SKETCHBOOK COVER PROJECT**
 - **STUDIO DAY 1/4**

BELLRINGER: SHADING A COLOR

- **SCUMBLE! SCUMBLE! SCUMBLE**
- Even in all areas
- Light layer of **COLOR**
- Light layer of **BLACK**
- Medium layer of **COLOR**
- Light layer of **BLACK**
- semi-heavy layer of **COLOR**
- Light layer of **BLACK**
- Heavy layer of **COLOR**
- (optional light layer of **BLACK**)





AGENDA: 9/7/23

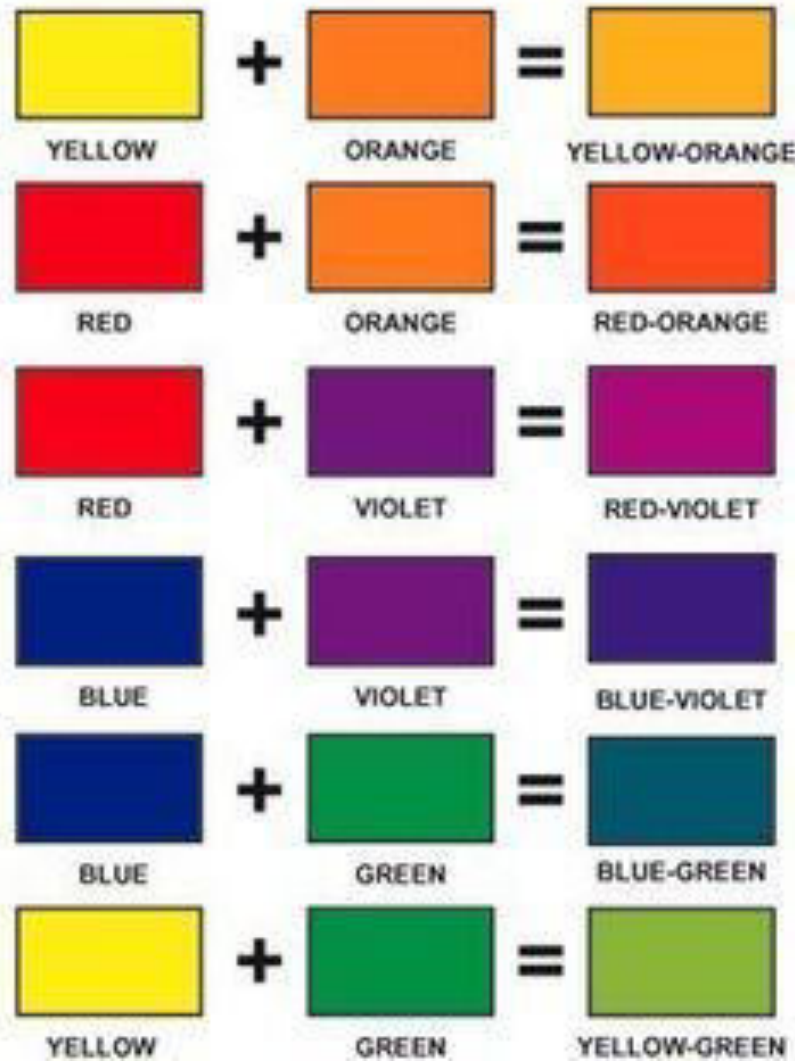


- **BELLRINGER:**
 - **WEDNESDAY SHADE PRACTICE**
- **15 PERSONAL SYMBOLS WORKSHEET**
 - **DUE YESTERDAY, 9/6/23**
- **SKETCHBOOK COVER PROJECT**
 - **STUDIO DAY 2/4**



BELLRINGER: TERTIARY COLOR MIXING

- **SCUMBLE! SCUMBLE! SCUMBLE**
- Even in all areas
- Light layer of **COLOR #1**
- Light layer of **COLOR #2**
- Medium layer of **COLOR #1**
- Medium layer of **COLOR #2**
- Heavy layer of **COLOR #1**
- Heavy layer of **COLOR #2**





AGENDA: 9/8/23

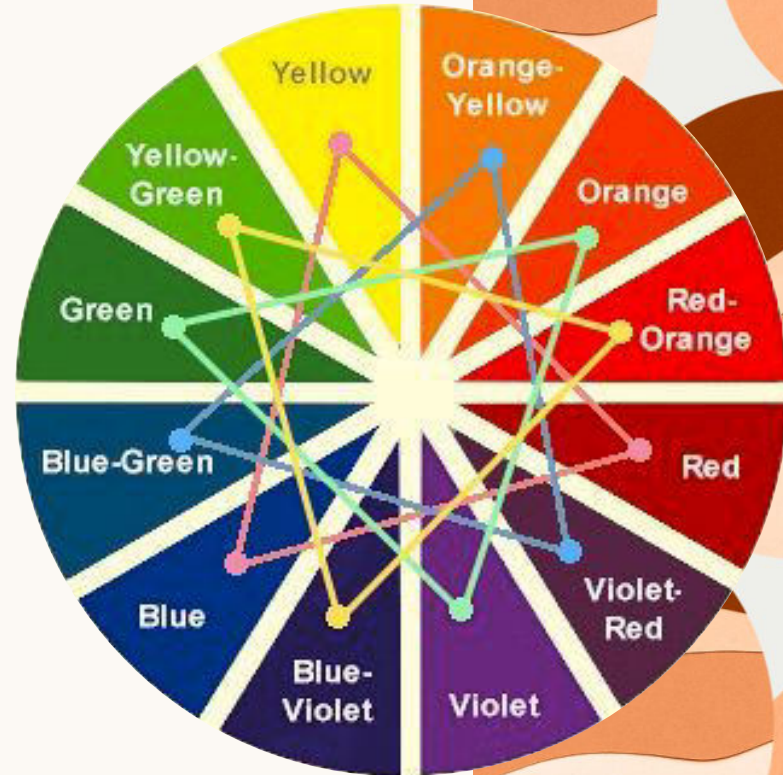


- **BELLRINGER:**
 - **WEDNESDAY SHADE PRACTICE**
- **SKETCHBOOK COVER PROJECT**
 - **STUDIO DAY 3/5**



BELLRINGER: TERTIARY TRIADIC

- Find your color.
- Move 4 spaces to the right, that is your second color.
- Move 4 spaces to the left, that is your third color.
- **ALL YOUR COLORS WILL BE TERTIARY!**



7-9 of same symbol

5-6 of same
symbol

11+ of same
symbol

Differing
sizes

name /
nickname

3-4 of same
symbol

bold outline
for
emphasis

1 larger emphasized symbol



Grading Checklist 100pts.

- 3 effective areas of color transitioning
- Use of 5 well designed symbols in response to repetition.
- Strong emphasized symbol (no smaller than your fist)
- 50% of space is being used by symbols/name
- Neatness & completeness