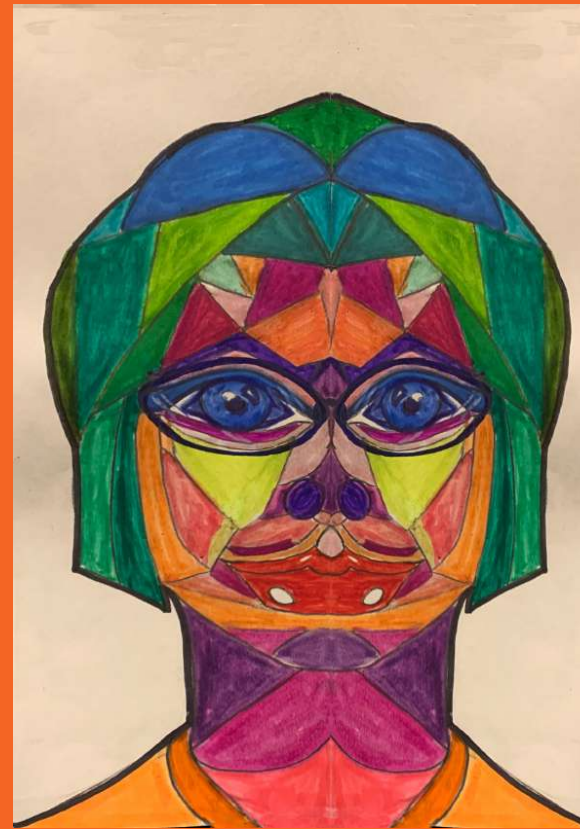

Portrait

Student Examples





Cubism
Cubism

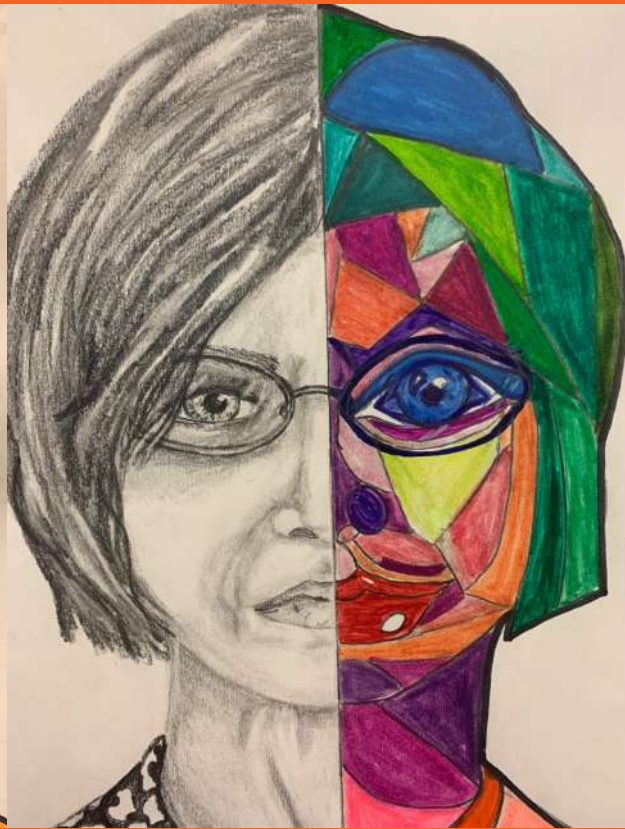


Photo Realism/Cubism



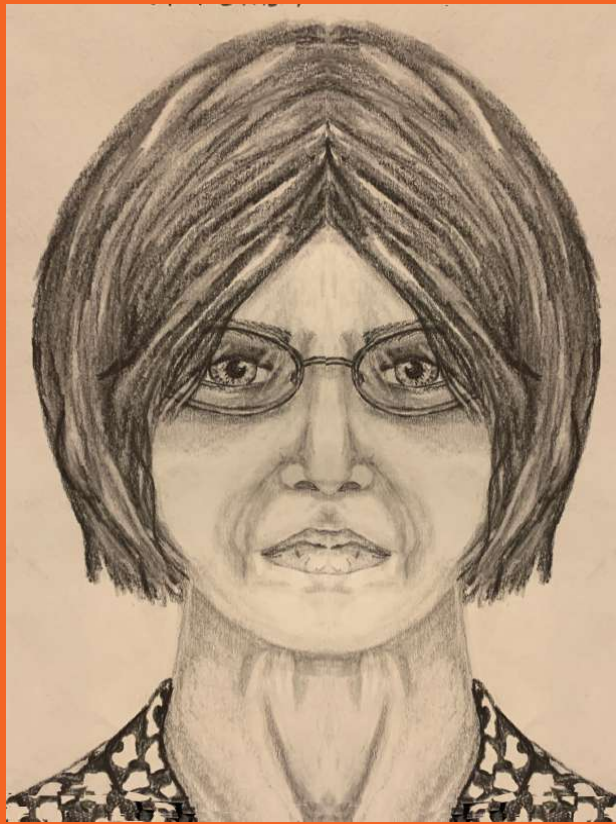
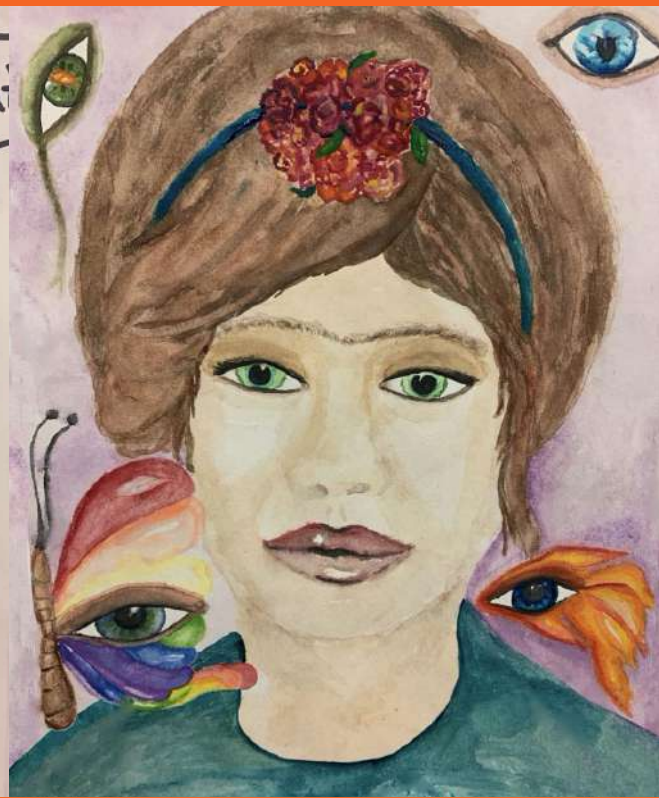


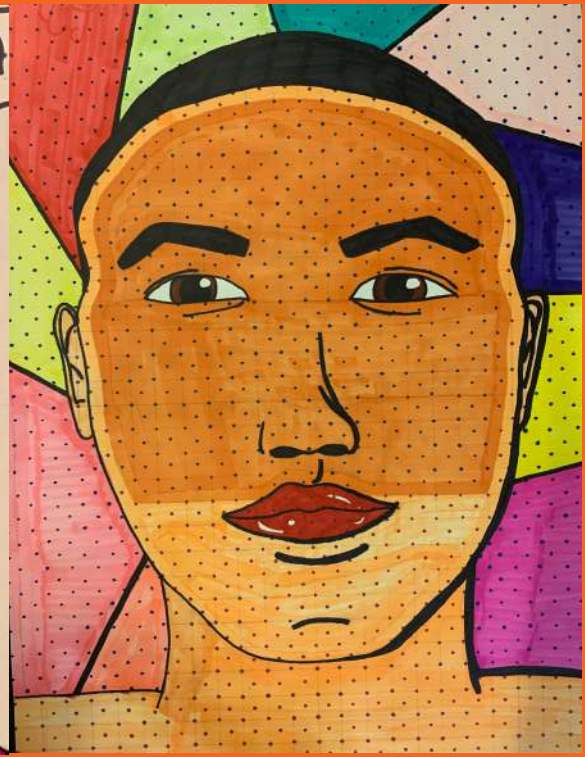
Photo Realism



Surrealism

Surrealism/Pop-Art

Surrealism

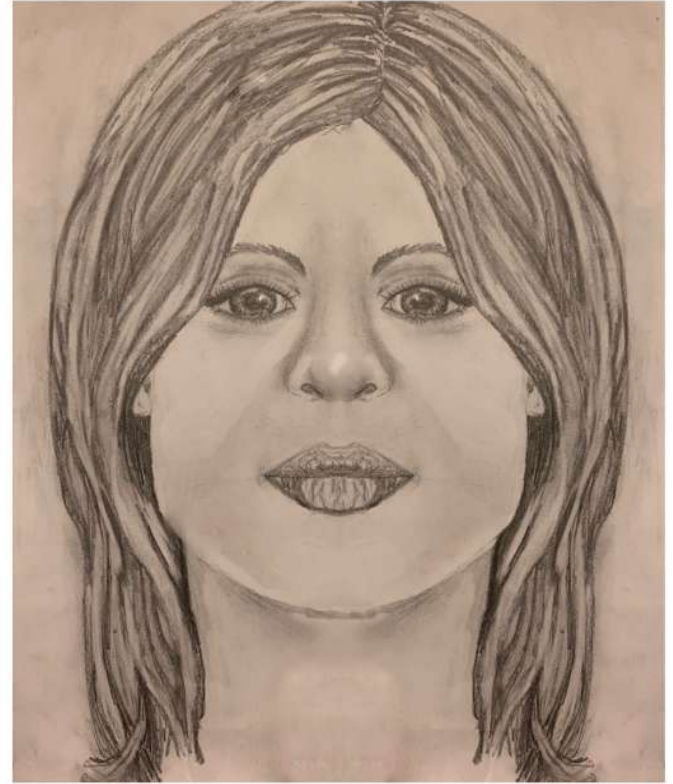


Pop-Art

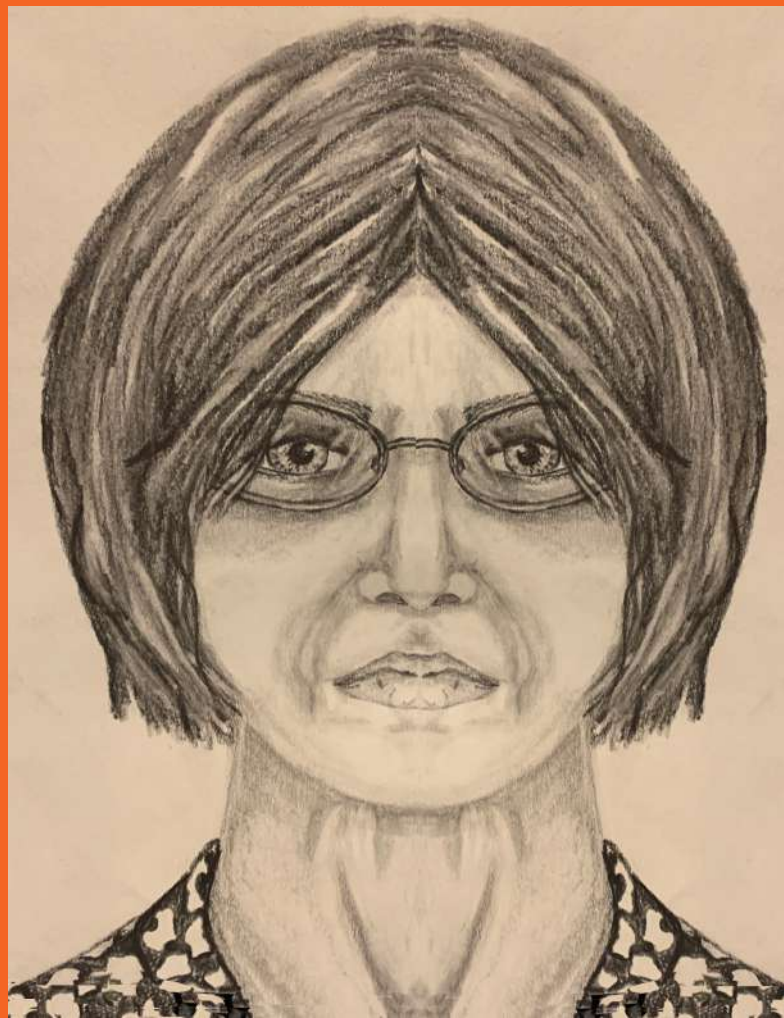
Photo- realism

a style of painting or drawing
in which images look so real
that they are hard to
distinguish from photographs

Photorealism: Self-Portrait Influenced by artist Chuck Close



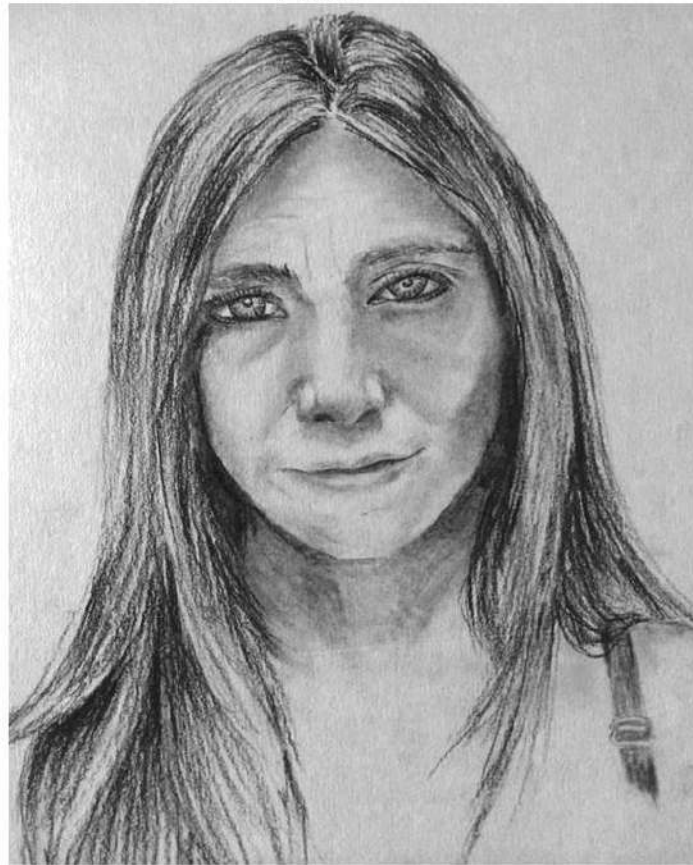
Shaded with #2 Pencil



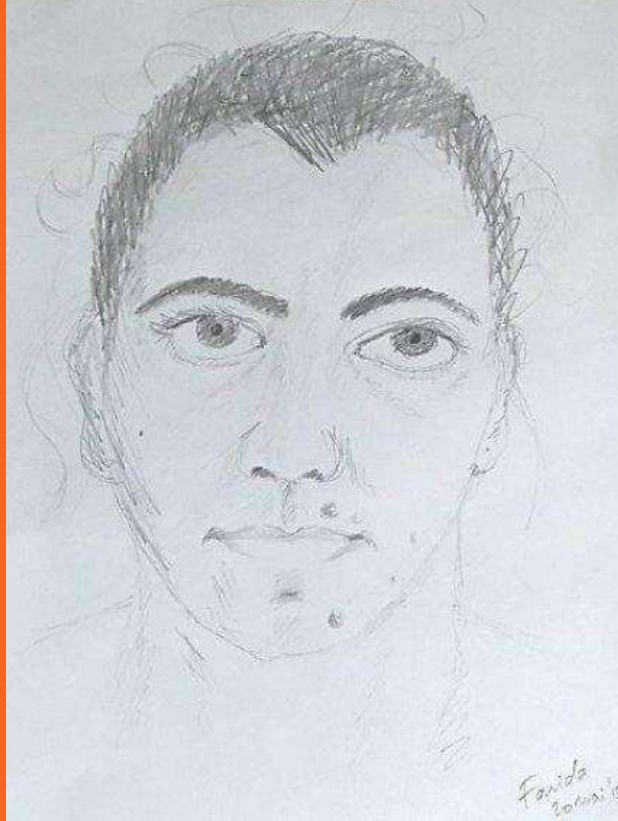
Practice



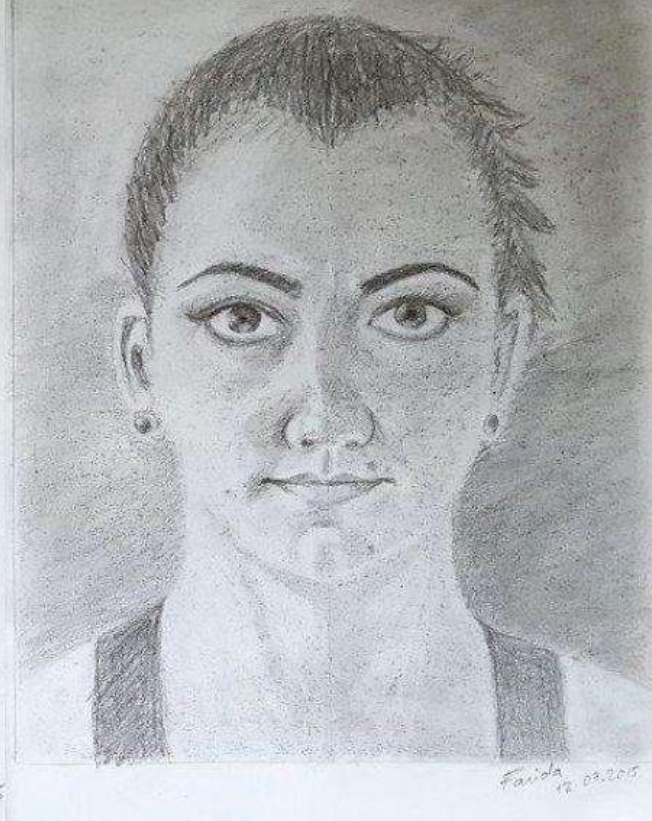
Final



Practice



Final



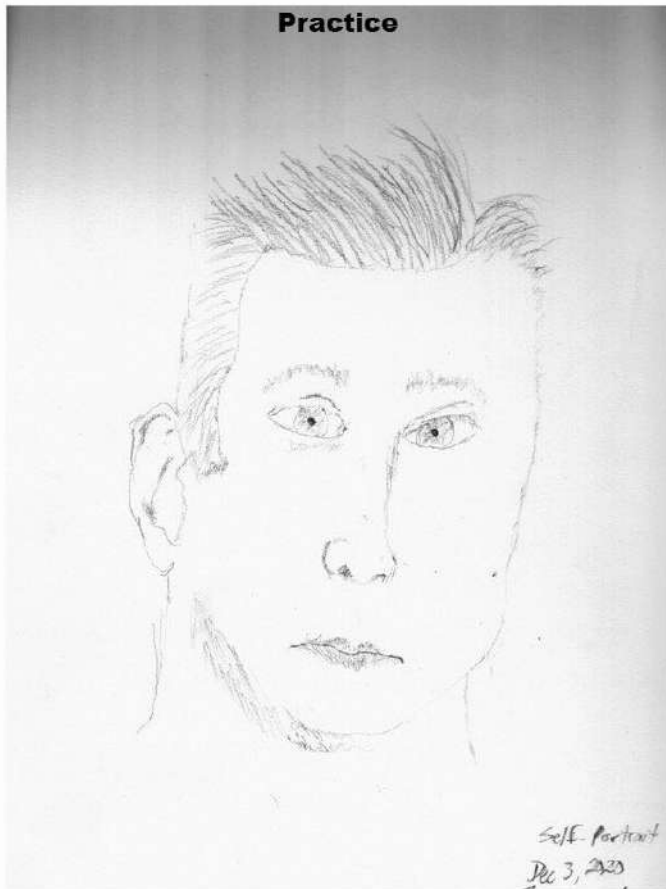
Practice



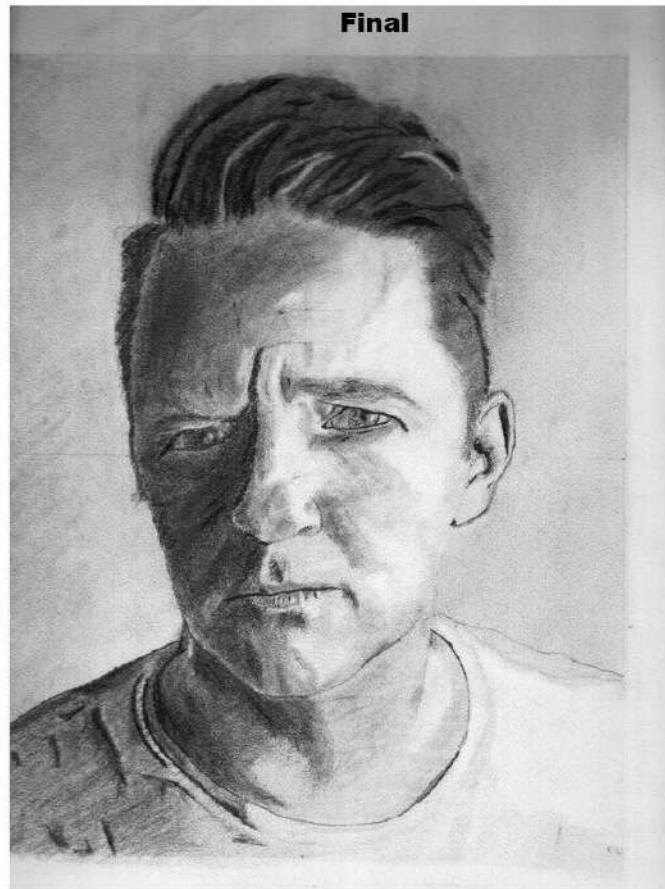
Final



Practice



Final



Practice



Final



Practice



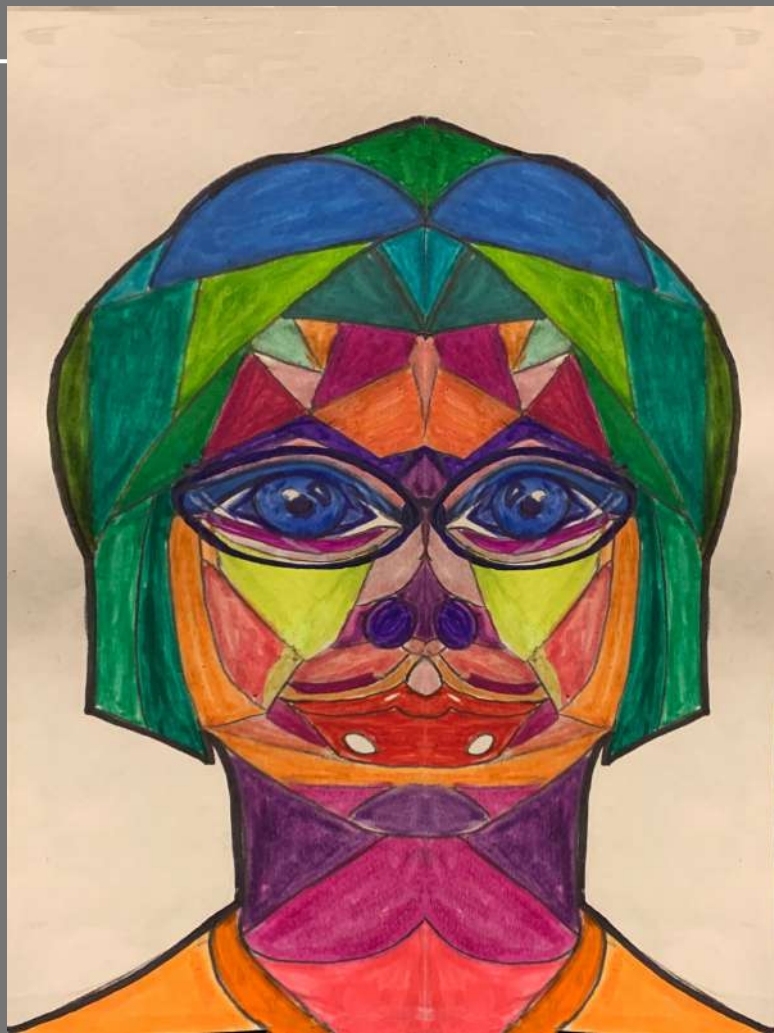
Final



Cubism

a style of art that stresses abstract structure at the expense of other pictorial elements especially by displaying several aspects of the same object simultaneously and by fragmenting the form of depicted objects.











PopArt

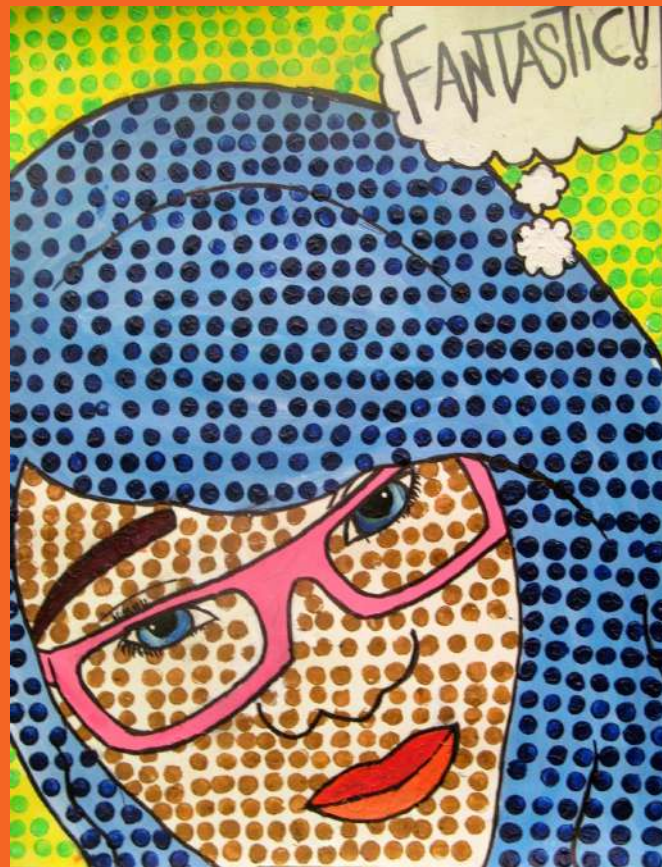
art in which commonplace objects (such as road signs, hamburgers, comic strips, or soup cans) are used as subject matter and are often physically incorporated in the work

Pop-Art: Self-Portrait Influenced by artist Roy Lichtenstein



Ben-Dots with Markers





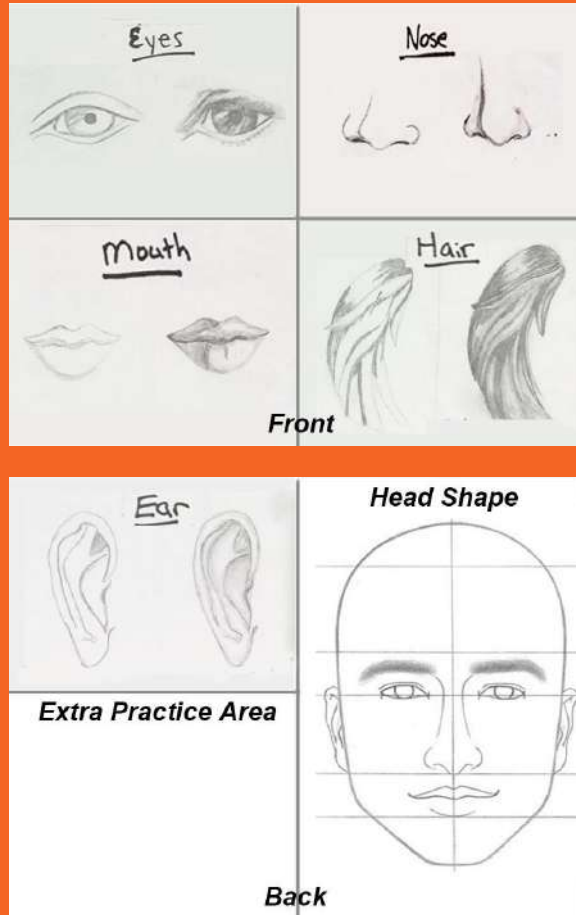




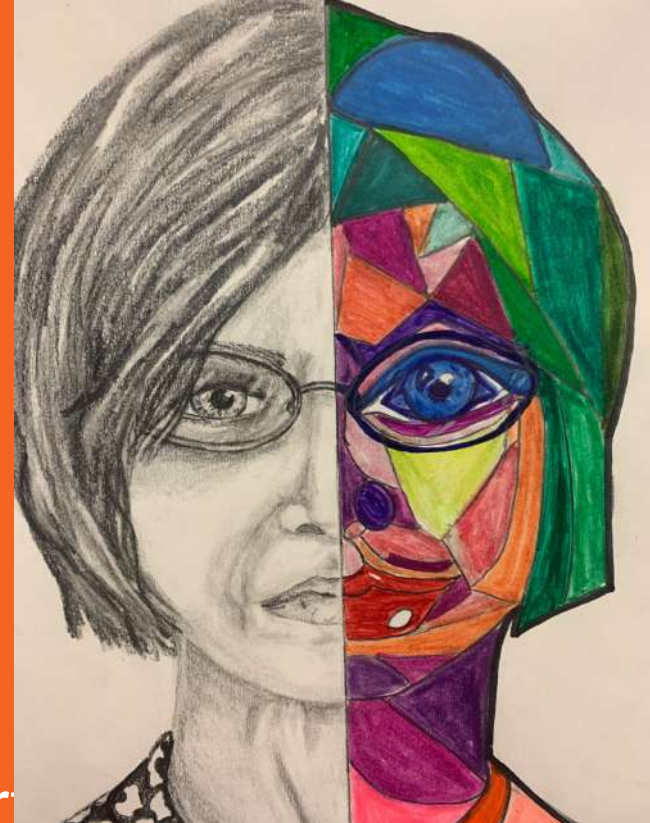
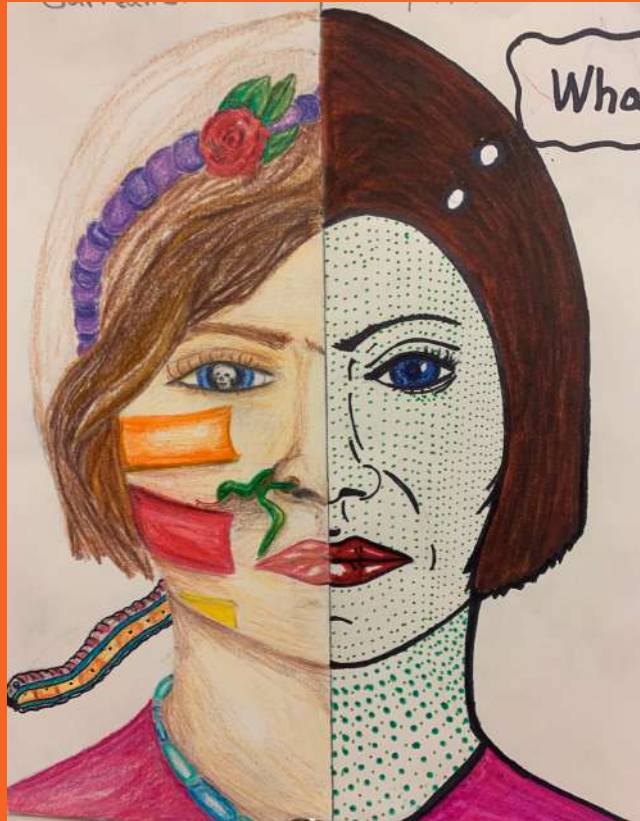




Practice



Choose ONE style for Final Self-Portrait



Realism Cubism



**1. Trim off the
White Area**



**2. Fold image
in quarters**



3. Darken fold Lines

