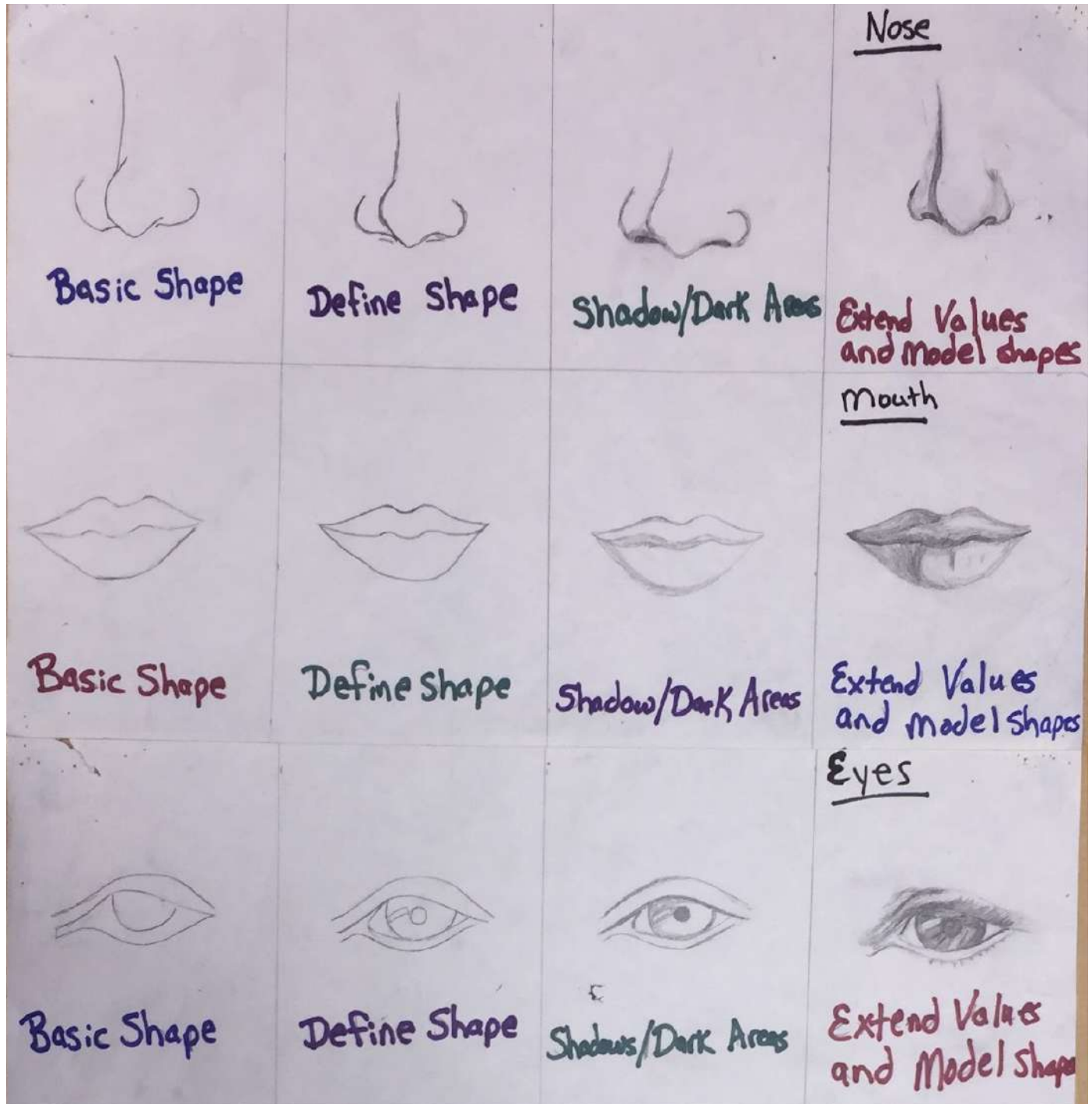


Portraiture Study and Style Packet Assignment(s)

Name: _____ Period: _____





Basic Shape



Define Shape



Shadows/Dark Areas

Hair



Extend values and model shape



Basic Shape



Define Shape



Shadows/Dark Areas

Ear



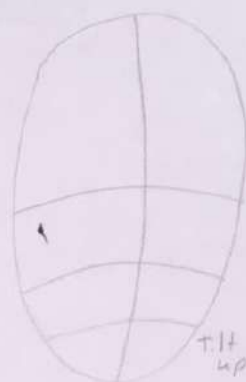
Extend values and model shape



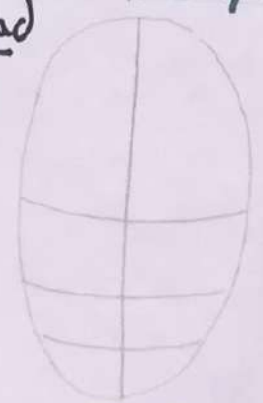
Basic Front



Basic Turn Right



Basic Turn Left



Basic Tilt Down

Head

Basic Shape

Define Shape

Shadow/Dark Area

Extend Values and Model Shape



Basic Shape

Define Shape

Shadow/Dark Area

Extend Values and Model Shape



Basic Shape

Define Shape

Shadow/Dark Area

Extend Values and Model Shape



Basic Shape

Define Shape

Shadow/Dark Area

Extend Values and Model Shape



Directions:

- 1. Pick one of the following art styles and artists**
 - a. Photorealism with Chuck Close**
 - b. Cubism with Pablo Picasso**
 - c. PopArt with Roy Lichtenstein**
 - d. Surrealism and Naive art with Frida Kahlo**
- 2. Review the presentation on your style and artist**
 - a. Be able to discuss your chosen style of art and artist from above**
- 3. Complete the Self-Portrait Identity worksheet**
- 4. Practice drawing facial parts:**
 - a. eyes**
 - b. nose**
 - c. mouth**
 - d. ears**
 - e. head shape**
 - f. hair**
 - g.**
- 5. Reflect on your identity when completing a self portrait using the style you choose and inspiration from your artist.**

Review self-portrait assignment for your artist style and artist

Assignment: Photorealism Self-Portrait

Chuck Close

1. You will be creating a self-portrait based on the work of Chuck Close using a graphite pencil; Drawing should show influences from Photorealism.
2. Find a black and white photograph of yourself, or you may use a mirror. The picture should be a front or $\frac{3}{4}$ view of your head and shoulders
3. You will **lightly** draw a contour line photorealism self-portrait drawing using a number two pencil; Head to shoulders required.
4. Study the proportions of the face; you may use a grid or freehand system for drawing proportions)
5. Practice sketching out the correct proportions on scratch paper before starting your portrait.
6. Practice using pencil to show depth and value on the practice portrait. Be sure to blend values showing the highlights and shadow areas.
7. Use white paper to sketch out your final portrait. Be accurate with proportions and details.
8. Begin using the pencil to show the wide range of values in the face. Accurately use pencil to show the highlights, shadows, and depth in the face.
9. Be sure to clean up all extraneous marks.

Photorealism: Self-Portrait-Chuck Close



Assignment: Cubism Self-Portrait

Pablo Picasso

1. You will be creating a self-portrait based on the work of Pablo Picasso using a graphite pencil or colored pencils; Drawing should show influences from Picasso's cubist period
2. You will **lightly** draw a contour line cubism self-portrait drawing using a number two pencil; Head to shoulders required.
3. You will have an understanding of Picasso and Cubism.
4. Colors should represent and express your mood, feelings, and self; use colors to express mood, you will be expected to explain your color choice later.
5. You will make use of a minimum of **5 colors or values**; excluding Black and White
6. All paper needs to be filled in with Layered Color Pencil or Shaded with a wide range of values.
7. When layering color pencils use complementary colors to create darker areas within your portrait.
8. All colors or values need to be layered, solid, and blended
10. Be sure to clean up all extraneous marks.

Cubism: Self-Portrait-Pablo Picasso (Layered Color Pencil)



Cubism: Self-Portrait-Pablo Picasso (Graphite Pencil)



Assignment: Pop-Art Self-Portrait

Roy Lichtenstein

1. You will be creating a self-portrait based on the work of Lichtenstein using markers, color pencils, or graphite pencils
2. You will draw a contour line drawing by free drawing or tracing a photo of yourself using a number two pencil.
3. You will trace your contour line drawing with a black marker, color pencil or graphite pencil.
4. You will have an understanding of Ben-Day Dots. *Hint: Ben-Day dots are **always of equal size** in a specific area.*
5. $\frac{3}{4}$ of your drawing should be Ben-Day Dots and $\frac{1}{4}$ can be of solid color/values
6. You will make use of 3 out of 4 of the following small colored dots:
 - a. closely-spaced
 - b. averagely-spaced
 - c. widely-spaced
 - d. overlapping
7. When placing your Ben-Day Dots, use a ruler to assist with keeping space, alignment, and structure to your dots.
8. You will make use of the color black and 3 additional colors or a wide range of values
9. Fill in the last $\frac{1}{4}$ of your drawing with solid color or a wide range of values.
10. You will have a minimum of a **one** word/thought bubble.
11. The word/thought bubble will have a minimum of **one** phrase with a minimum of **7 words** that expresses what you are thinking, feeling, or wanting to say.

Pop-Art: Self-Portrait-Roy Lichtenstein-Markers

Pop-Art: Self-Portrait Influenced by artist Roy Lichtenstein



Ben-Dots with Markers

Pop-Art: Self-Portrait-Roy Lichtenstein-Pencil



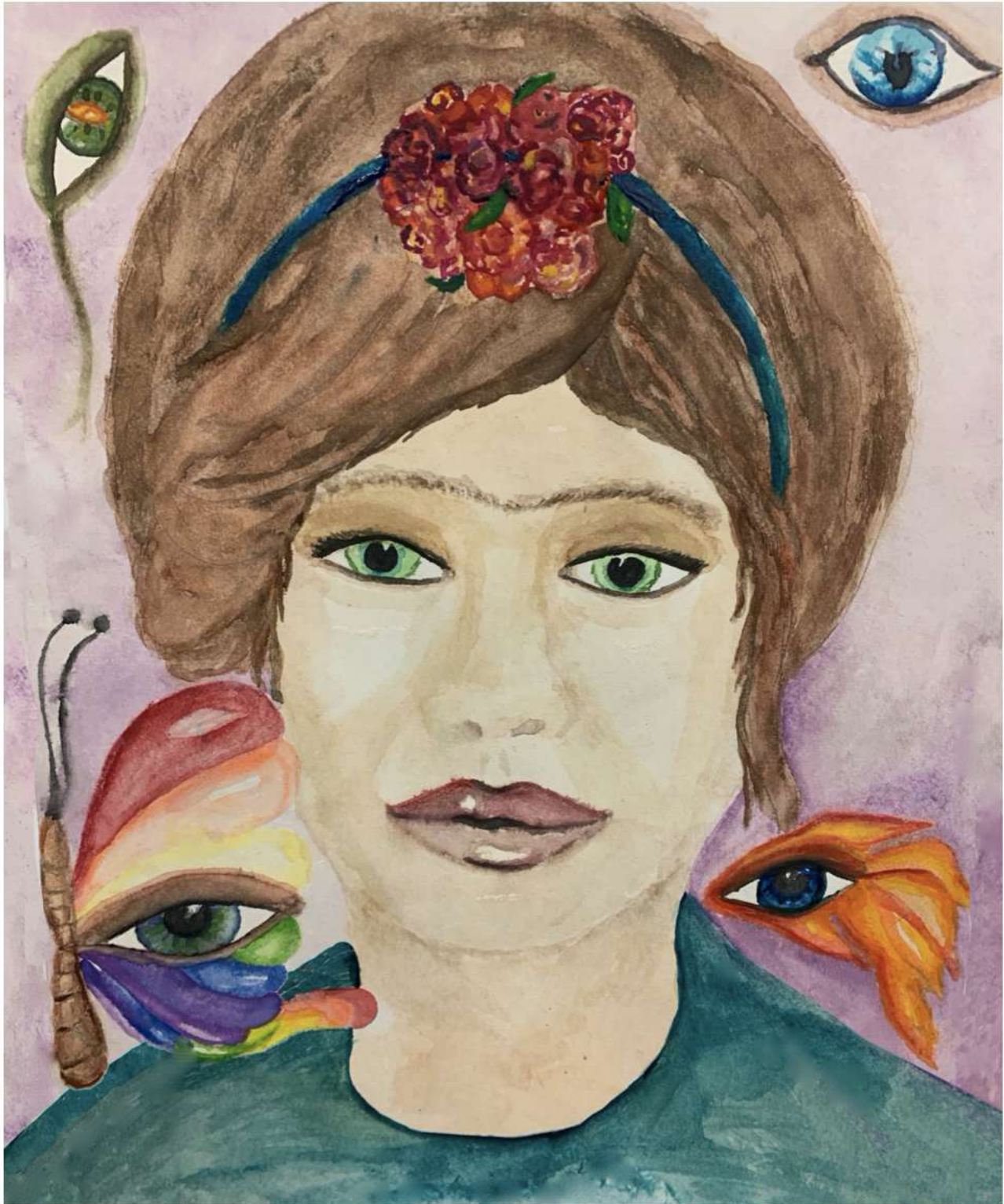
Assignment: Surrealism Self-Portrait

Frida Kahlo

1. In your Portrait Study & Style Packet, you will draw a surrealistic self-portrait influenced by Frida Kahlo's self-portrait style using a graphite pencil, watercolor, and a mirror or a selfie/picture of yourself.
2. You must include eyes, nose, mouth, eyebrows, chin, ears, hair, neck, top of shoulders and any piercings, facial marks (freckles), and/or glasses you have.
3. Play close attention to the proportions and details of your face. (ex: thin top lip full bottom lip, eyes that turn down, a wide bulb of nose, etc.)
4. Background should have additional surrealistic imagery.
5. Everything shaded using the value Scale to show a wide range of values from light to dark or painted using a wide range of colors from dark to light values of the color.
6. The shading should help give objects and details a 3-Dimensional feel.

Surrealism: Self-Portrait-Frida Kahlo

Surrealism with Naïve Art: Self-Portrait Influenced by artist Frida Kahlo



Painted and Shaded with Watercolors

