



# NRHEG Public School

Independent School District No. 2168

High School

306 Ash Ave. South

New Richland, MN 56072

(507)465-3205

Fax (507)465-8633

Elementary School

600 School St.

Ellendale, MN 56026

(507)684-3181

Fax (507)684-2108

## Secondary Principal's Report

NRHEG School District

1. On the agenda we are asking you to approve the following new staff members in the secondary building: Paul Meyer, Physical Education, and Jessie Bolinger, Linda Henslin, Hannah Lundberg, Karen Flatness, Paraprofessionals.

2. As of 8-15-17, the 6-12 enrollment for 2017-2018 school year is 502. Our numbers will continue to fluctuate daily. Below is a breakdown of grade levels:

	6	7	8	9	10	11	12	Total
<b>Female</b>								
	40	38	31	39	36	31	35	250
<b>Male</b>								
	34	43	38	40	22	36	39	252
<b>Totals</b>	74	81	69	79	58	67	74	502

3. The 6th grade schedule will change again this year in order to accommodate more physical education. Students will also have some study hall time.

4. We have applied for a variance in Construction Careers for Brad Root and it has been granted. We also applied for a Community Expert License for Courtney Klocek in Special Education and the license has been approved by the Minnesota Board of Teaching. We are waiting for Ashley Young's to come back and then all licenses should be acquired. With the new law, our licensing process will change in the future.

5. Secondary school pictures will be on September 7, 2017 with Brant Hemingway Photography and Video.

6. Open House for grades 7-12 is on Wednesday, August 30 from 4-8 p.m. 6th Grade Orientation is also that night from 6:30 to 8:00.

7. See 6th grade WEB invitation from Robin Eder and Brooke Krohn, Web Coordinators:

**Dale N. Carlson, Superintendent**

**David A. Bunn, High School Principal**

**Douglas A. Anderson, Elementary Principal**

The staff and students of NRHEG Middle School invite you to our first annual WEB Sixth Grade Orientation 8:00 am - 12:00 pm August 29, 2017 in our Middle School gymnasium. The purpose of this orientation is to make the transition from elementary school to middle school a positive one. Eighth graders will be serving as leaders and mentors to the sixth graders. Large and small group activities are designed to address students' needs and concerns in an enjoyable manner. Wear comfortable clothes and don't bring all your stuff... travel light! If you have any questions, please call WEB Coordinator Brooke Krohn or Robin Eder at 507-465-3205.

8. We created the STEP program in the middle school to assist in managing student behavior along with mixing in rewards to support PBIS. Below is a copy of the plan:

NRHEG 6-8th Discipline Plan

AT OUR SCHOOL WE ARE:

Positive, Respectful, Responsible, Safe

STEP PLAN:

- |        |  |
|--------|--|
| Step 1 | <ul style="list-style-type: none"> <li>A. Verbal warning</li> <li>B. Written in student log</li> <li>C. Parent/Guardian discuss incident with student at home and sign log</li> </ul>  |
| Step 2 | <ul style="list-style-type: none"> <li>A. Verbal warning</li> <li>B. Written in student log</li> <li>C. Parent/Guardian discuss incident with student at home and sign log</li> <li>D. Student will miss two week log reward</li> </ul>  |
| Step 3 | <ul style="list-style-type: none"> <li>A. Written in student log</li> <li>B. Parent/Guardian discuss incident with student at home and sign log</li> <li>C. Student will miss two week log reward</li> <li>D. Staff member will contact the Parent/Guardian.</li> <li>E. Complete online JMC referral (minus homework steps).</li> </ul>                   |
| Step 4 | <ul style="list-style-type: none"> <li>A. Written in student log</li> <li>B. Student's name placed on detention list by the staff member.</li> <li>C. Parent/Guardian discuss incident with student at home and sign log</li> <li>D. Office will contact the Parent/Guardian.</li> <li>E. Student will have consequences assigned by the office</li> </ul> |

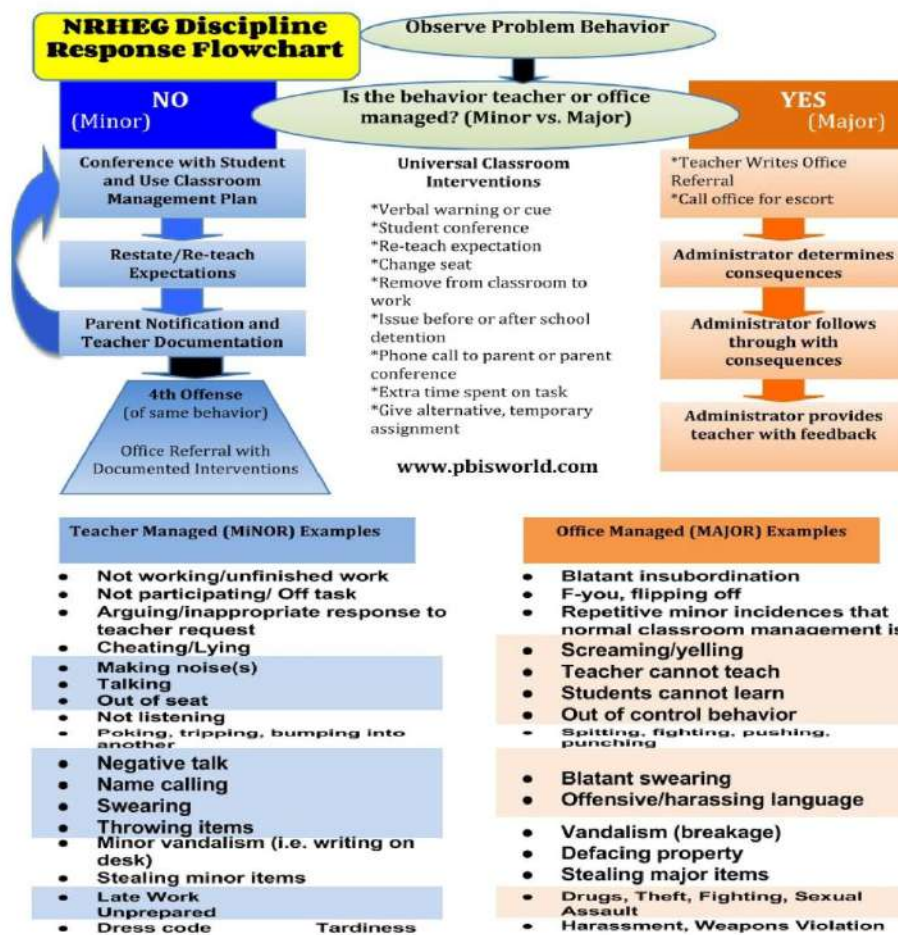
- |                             |   |
|-----------------------------|---|
| 1st Step 4 thru 5th Step 4  | Detention(s) and miss Quarter Reward                                      |
| 6th Step 4                  | In-School Suspension (1 day) and miss Quarter Reward                      |
| 7th Step 4 thru 10th Step 4 | Detention(s) and miss Quarter Reward                                      |
| 11th Step 4                 | In-school suspension (2 days) and NO after school activities during the 2 |

days of ISS.

This series of detentions and ISS consequences will start over again at 1 - once the student has served a two-day ISS for detention 11.

The Step 4 consequences will restart each quarter.

Also, the high school will use the disciplinary flowchart on the below to assist in managing student behavior.



9. Football, CC and Volleyball have started.

10. New Staff Orientation Workshop

Monday, August 21st and Tuesday, August 22nd

Staff Back to School Workshop/In-service  
AUGUST 28 – 31, 2017

**Our Mission**

Empowering students with  
knowledge and skills to succeed.

**Our Vision**

To be the school district of choice, inspiring  
excellence in academics, arts, and activities.