

# Sarah Lawrence Students Compete in Hult Prize Regional Finals



The student team included (above, left to right):  
Jeannine Chia '13, Jackie Assar '14, Teresa Phiri '13, Sachi Shah '15, and Maria Munoz '13

Inspired by their economics course, "Social Entrepreneurship: Models for Intervention in Global Poverty," and encouraged by their teacher, **Catherine Muther '69**, five SLC students entered the prestigious Hult Prize competition last spring. The Hult Prize is a startup accelerator for social entrepreneurship created in partnership with the Clinton Global Initiative—and the world's largest student movement for social good—which carries an award of \$1 million for the winning student team. In a

competition dominated by MBA teams from around the world, SLC's undergrad team of five was *one of only three* undergraduate teams in their 70-team region. Although their project, "Aquasol: Addressing Food Insecurity in Urban Slums," did not win, their performance brought them to the Boston regional finals—an extraordinary result given that 10,000 applicants, representing 350 colleges and universities, competed in five regional finals around the world.

## A deeper education to become world-ready

A Sarah Lawrence education is a personal journey like no other, and the results are remarkable. Students graduate with flexibility, adaptability, and the right preparation for a rapidly changing future—ready for the world.

The hallmarks of a Sarah Lawrence education:

**Dons (faculty mentors)**

**Round-table seminars**

**1:1 meetings with faculty**

**Writing in every discipline**

**Evaluations, not just grades**

**All the benefits of being in close proximity to NYC**

Sarah Lawrence's "PROFESSORS GET HIGH MARKS" per the Princeton Review—recognizing our faculty as "the best in the country."

SLC'S  
FACULTY  
#1  
The Princeton  
Review  
2013

Our belief in linking faces with names extends to more than prospective students. Making personal connections with guidance counselors is also invaluable. To find out when we'll be in your area—or if you have any other questions—please call or send us an e-mail. For general questions, you can address your inquiry to: [slcadmit@sarahlawrence.edu](mailto:slcadmit@sarahlawrence.edu) or call (800) 888-2858.

## WHO'S WHO IN THE OFFICE OF ADMISSION AT SLC



**Annalei (Burkhalter) Aegerter**  
Director of West Coast Admission  
[aaegerter@sarahlawrence.edu](mailto:aaegerter@sarahlawrence.edu)  
Reading Areas: Alaska, California, Hawaii, Idaho, Montana, Oregon, Washington, Wyoming



**Elizabeth Fontan**  
Assistant Director of Admission  
[efontan@sarahlawrence.edu](mailto:efontan@sarahlawrence.edu)  
Reading Areas: Alabama, Arkansas, Florida, Kentucky, Louisiana, Mississippi, New York City (Bronx, Brooklyn, Queens, Staten Island), North Carolina, South Carolina, Tennessee



**Shirley Bé**  
Assistant Dean of Studies,  
Director of International Admission  
and Student Advising  
[sbe@sarahlawrence.edu](mailto:sbe@sarahlawrence.edu)  
Reading Areas: International, Puerto Rico, US Territories, Virgin Islands



**Jennifer Gayles**  
Director of Admission  
and Coordinator of  
Multicultural Recruitment  
[jgayles@sarahlawrence.edu](mailto:jgayles@sarahlawrence.edu)  
Reading Areas: Manhattan, Georgia



**CeCe Belcher**  
Assistant Director of Admission  
[cbelcher@sarahlawrence.edu](mailto:cbelcher@sarahlawrence.edu)  
Reading Areas: Maryland, Pennsylvania (Eastern), Virginia, Washington, D.C., West Virginia



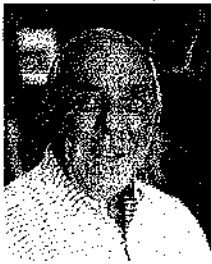
**Liam George**  
Admission Counselor  
[lgeorge@sarahlawrence.edu](mailto:lgeorge@sarahlawrence.edu)  
Reading Areas: Arizona, Colorado, Connecticut, New Mexico, New York (North and West of NYC), Nevada, Utah



**Adam Exline**  
Associate Director of Admission  
[aexline@sarahlawrence.edu](mailto:aexline@sarahlawrence.edu)  
Reading Areas: Illinois, Indiana, Iowa, Kansas, Michigan, Minnesota, Missouri, Nebraska, North Dakota, Ohio, Oklahoma, Pennsylvania (Western), South Dakota, Texas, Wisconsin, Transfers



**Charles Hessler**  
Assistant Director of Technology  
[chessler@sarahlawrence.edu](mailto:chessler@sarahlawrence.edu)



**Walter J. Hughes, Jr.**  
Admission Counselor  
[whughes@sarahlawrence.edu](mailto:whughes@sarahlawrence.edu)  
Reading Areas: Maine,  
Massachusetts, New Hampshire,  
Rhode Island, Vermont



**Tom Rabbitt**  
Admission Counselor  
[trabbitt@sarahlawrence.edu](mailto:trabbitt@sarahlawrence.edu)  
Reading Area: Long Island



**Deborah Ku'upuaonaona  
McCue**  
Director, Admission Operations  
and Information Systems  
[dmccue@sarahlawrence.edu](mailto:dmccue@sarahlawrence.edu)



**Karen Vahey**  
Director of Enrollment  
[kvahey@sarahlawrence.edu](mailto:kvahey@sarahlawrence.edu)



**Norman Mopsick**  
Admission Counselor  
[nmopsick@sarahlawrence.edu](mailto:nmopsick@sarahlawrence.edu)  
Reading Areas: Delaware,  
New Jersey



**Administrative  
Staff (l to r):**  
Melissa McCarter  
Annette Nelson  
Jack Galeano  
Linda Bloom  
Cecilia Tierney  
Michelle Faselt

## WHO'S WHO IN FINANCIAL AID

In the Office of Financial Aid, we share a spirit of optimism, which is a big part of how we approach our task. We urge students to apply for aid, even if they're not sure whether they're eligible. We work closely with families to help them find the resources to pay for a Sarah Lawrence education. In fact, more than half of our students are receiving some type of assistance.



**Heather McDonnell**  
Director of Financial Aid

**Roberta Daskin**  
Associate Director of Financial Aid

**Nick Salinas**  
Associate Director of Financial Aid and  
Coordinator of Student Employment

**Peggy Leahy**  
Administrative Assistant

**Carol Snyder**  
Loan Counselor

(l to r) Nick, Peggy, Carol, Heather, Roberta

# MORE ABOUT SARAH LAWRENCE COLLEGE

## Admission & Financial Aid Deadlines

### First-Year Applicants

#### Early Decision I

Application & supporting material due: 11/1/13  
CSS Profile due: 11/1/13  
FAFSA due: 2/1/14

#### Early Decision II

Application & supporting material due: 2/1/14  
CSS Profile due: 2/1/14  
FAFSA due: 2/1/14

#### Regular Decision

Application & supporting material due: 2/15/14  
CSS Profile due: 2/15/14  
FAFSA due: 2/15/14

### Transfer Applicants

#### Spring Semester

Application & supporting material due: 11/1/13  
CSS Profile due: 11/1/13  
FAFSA due: 11/1/13

#### Fall Semester

Application & supporting material due: 4/1/14  
CSS Profile due: 4/1/14  
FAFSA due: 4/1/14

## Helpful Online Information

### Just for You!

We've developed a special page on our Web site just for guidance counselors. Here you'll find links to everything you and your students will want to know about Sarah Lawrence College. Please visit: [www.slc.edu/counselors](http://www.slc.edu/counselors)

### Fly-in, Train-in, Bus-in

In conjunction with our Admitted Students Day held in April, we are offering financial assistance for those students who are unable to cover the cost of transportation to visit campus. After decision letters are sent in March, if you know an admitted student in need of transportation assistance, please have the student contact Jennifer Gayles, Director of Admission and Coordinator of Multicultural Recruitment, at (800) 888-2858 or [jgayles@sarahlawrence.edu](mailto:jgayles@sarahlawrence.edu)

## CONTACT US

Sarah Lawrence College, 1 Mead Way, Bronxville, NY 10708

**Office of Admission:** [slcadmit@sarahlawrence.edu](mailto:slcadmit@sarahlawrence.edu)  
(800) 888-2858 or (914) 395-2510 • Fax: (914) 395-2515

**Office of Financial Aid:** [finaid@sarahlawrence.edu](mailto:finaid@sarahlawrence.edu)  
(914) 395-2570 • Fax: (914) 395-2676

Follow us on Facebook and Twitter:

[www.slc.edu/facebook](http://www.slc.edu/facebook) •

[www.facebook.com/SarahLawrenceCollegeOfficeOfAdmission](https://www.facebook.com/SarahLawrenceCollegeOfficeOfAdmission) •

[@SLCadmit](http://www.slc.edu/twitter)



## VISITING THE CAMPUS

Prospective students and their families are welcome to visit Sarah Lawrence year-round. Campus tours, information sessions, personal interviews, class visits, and overnight stays with current students are all available. To arrange a campus visit, go to [www.slc.edu/visit](http://www.slc.edu/visit)

