

1. (U4C3L2:Q1) Detoxification programs are one type of treatment for drug abuse. Detoxification programs are residential treatment centers where drug abusers live together and learn how to adjust to drug-free lives.

2. (U4C3L2:Q2) While mentoring a new Cadet, you had her write four positive reasons for choosing to not do drugs. Of her reasons (listed below), which one would you tell her could get confused with an excuse to take drugs?

3. (U4C3L2:Q3) A friend of yours has changed a lot over the past few months. He started "hanging out" with a different group of people, and his grades in school have been lower than usual. When you see him in a restaurant parking lot, he is having trouble getting his car door unlocked, and seems to be having trouble standing up - he looks like he's drunk. When you try to take his keys, he first tells you that he's no longer your friend. Next, he tells you (using slurred speech) that he hasn't been drinking. When you smell him, his breath does not smell like alcohol.

What should you do next?

4. (U4C3L2:G1) What are the chances that a first-time user of cocaine will become addicted?

5. (U4C3L2:G2) What are the chances that a first-time crack user will become addicted?

6. (U4C3L2:G3) Name the five stages of drug abuse.

7. (U4C3L2:G4) T or F: People who are under great stress are more likely to use drugs.

8. (U4C3L2:G5) T or F: Teens who have family problems are more likely to use drugs.

9. (U4C3L2:G6) T or F: Physical activities that help you burn off energy and relax can help you resist drug use.

nd

10. (U4C3L2:G7) T or F: One technique for saying "No" to drugs is to visualize yourself in different settings where you may be offered drugs so you can have a ready answer to the question.
11. (U4C3L2:G8) T or F: Advertisers often make drug use appear glamorous, sophisticated, and appealing.
12. (U4C3L2:G9) What is the main reason that people misuse and abuse drugs?
13. (U4C3L2:G10) T or F: One out of ten drinkers will become an alcoholic.
14. (U4C3L2:G11) What do you do with an unconscious alcohol victim?
15. (U4C3L2:G12) T or F: If an alcohol victim is conscious and has ingested the alcohol overdose within the last 30 minutes, you should treat the victim by making him or her vomit.
16. (U4C3L2:G13) Name three actions you can take if someone you know has a drug problem.
17. (U4C3L2:G14) T or F: One way you can help someone with a drug problem is to provide him or her with the names of people and agencies that can provide help.
18. (U4C3L2:G15) T or F: Studies show there is a close association between drug abuse and personality factors such as self-esteem, self-reliance, and alienation.
19. (U4C3L2:G16) T or F: Drinking alcohol is the third leading cause of death in the United States, right behind heart disease and cancer.
20. (U4C3L2:G17) What education campaign encourages college students to be responsible for each other and help each other avoid drunk driving situations?

21. (U4C3L2:G18) What underlying agreement between students and parents makes the program Students Against Drunk Driving (SADD) so successful?
22. (U4C3L2:G19) T or F: One in one hundred drinkers becomes an alcoholic.
23. (U4C3L2:G20) T or F: Alcohol is a factor in over 50% of murders and child abuse cases and in over 25% of rapes and suicides.
24. (U4C3L2:G21) T or F: Stress leads some people to use drugs.
25. (U4C3L2:G22) T or F: The main reason people misuse and abuse drugs is to change the way they feel.
26. (U4C3L2:V1) What is a "detoxification program"?
27. (U4C3L2:V2) What is the definition of the word "methadone"?
28. (U4C3L2:V3) What is the definition of the term "therapeutic community"?
29. (U4C3L2:V4) What is the definition of the word "stress"?
30. (U4C3L2:V5) What is the definition of the word "normal"?

Cadet Name: _____

Date: _____

1. (U4C2L8:F1) How motivated are you to study cold weather injuries?

2. (U4C2L8:F2) Which cold weather injury is shown in this picture?



3. (U4C2L8:F3)

While out snowboarding you see that your friend is trembling. When you stop to ask if he is okay he complains he is dizzy and you notice his speech is slurred. He is exhibiting signs of _____.

4. (U4C2L8:F4) True or False. Massaging the affected area of a cold weather injury is the proper treatment necessary to stimulate blood flow and bring warmth to the area.

5. (U4C2L8:F5)

Warming the affected area of a cold weather injury is part of the treatment for all answer choices except _____.

6. (U4C2L8:F6) Why do you elevate the foot of a victim with immersion foot?

7. (U4C2L8:F7)
You and a friend are looking forward to a day of cross country skiing. Your friend tells you not to bother wearing sunglasses since it is hazy, cloudy weather. Do you agree?

8. (U4C2L8:Q1) Before a 4-day weekend in late autumn, you were directed to give a safety briefing about wind chills. The weather report said the temperature was going to be between 10° - 30° F, and the winds were going to be from 10 - 20 mph. You used the wind chill chart to see what the equivalent temperatures will be. Of the following statements, which one should you include in your safety briefing?

Estimated Wind Speed in MPH	Actual Thermometer Reading (°F)											
	50	40	30	20	10	0	-10	-20	-30	-40	-50	-60
	Equivalent Temperature (°F)											
Calm	50	40	30	20	10	0	-10	-20	-30	-40	-50	-60
5	48	37	27	16	6	-5	-15	-26	-36	-47	-57	-68
10	40	28	16	4	-9	-24	-33	-46	-58	-70	-83	-95
15	36	22	9	-5	-18	-32	-45	-58	-72	-85	-99	-112
20	32	18	4	-10	-25	-39	-53	-67	-82	-96	-110	-124
25	30	16	0	-15	-29	-44	-59	-74	-88	-104	-118	-133
30	28	13	-2	-18	-33	-48	-63	-79	-94	-109	-125	-140
35	27	11	-4	-21	-35	-51	-67	-82	-96	-113	-129	-145
40	26	10	-6	-24	-37	-53	-69	-85	-100	-116	-132	-148
Wind Speeds above 40 mph have little additional effect	Little Danger for the Properly clothed person. Minimum Danger of false sense of security				Increasing Danger of Freezing Exposed Flesh				Great Danger			
Trench foot and immersion foot may occur at any point on this chart												

9. (U4C2L8:Q2) Read the paragraph below, and decide which option (A-D) is correct.

Jesse is supposed to be working outside in cold, damp, and possibly wet weather tomorrow. His job is hard work, so to prevent cold injuries, he starts to prepare today. He started to drink one quart of water an hour, and the weather report said that the temperatures and wind speeds weren't going to be that bad. He washed his good work clothes, has two extra pairs of socks, and he plans to wear his new heavy waterproof jacket. He knew he was physically fit because he works out regularly, and because his doctor told him he was "fit as a fiddle." All he had left to do was to eat a good meal, take a shower, and get a good night's sleep.

Of all of his actions, which one is most likely to cause a cold injury?

10. (U4C2L8:Q3) Even though the temperature is 53°F, the light rain and wind put an extra

chill in the air. You and three of your friends have been playing touch football for the past three hours, and you just decided to take a break before starting your last game. After a few minutes, your friend Ethan is shivering, and he looks a little pale. He groans as he stands up, and then he trips over his own feet. When you help him up, his hand feels very cold.

What should you and your friends do next?

11. (U4C2L8:G1) What causes trench foot?
12. (U4C2L8:G2) When body tissue dies because of a lack of blood supply, as happens with deep frostbite, it is called _____.
13. (U4C2L8:G3) T or F: One treatment for frostbite is to put the affected area close to a high heat source such as a fire.
14. (U4C2L8:G4) What is snow blindness?
15. (U4C2L8:G5) What do experts mean when they say that precipitation increases cold weather injuries?
16. (U4C2L8:G6) T or F: Fear and fatigue lessen a person's ability to stay warm and thus increases the possibility of cold injuries.
17. (U4C2L8:G7) When ice crystals form in body tissue exposed to temperatures below freezing, it is called _____.
18. (U4C2L8:G8) T or F: Subcutaneous frostbite may cause gangrene and lead to the need for surgical removal of the affected part.
19. (U4C2L8:G9) Long exposure of the feet to wet conditions at temperatures between 32 degrees and 50 degrees causes what injury?
20. (U4C2L8:G10) What is hypothermia?

21. (U4C2L8:G11) Name the three steps for treating snow blindness.
22. (U4C2L8:G12) How do you treat cold weather dehydration?
23. (U4C2L8:V1) Precipitation
24. (U4C2L8:V2) Insulate
25. (U4C2L8:V3) Subcutaneous
26. (U4C2L8:V4) Frostbite
27. (U4C2L8:V5) Superficial
28. (U4C2L8:V6) Hypothermia
29. (U4C2L8:V7) Dehydration
30. (U4C2L8:DL1) Cold weather injuries are more common in northern areas. How often are you exposed to temperatures below 20 degrees Fahrenheit?
31. (U4C2L8:DL2) Proper treatment for cold injuries is often not obvious. Which of the following treatments might be the most challenging for you to remember?

Cadet Name: _____

Date: _____

1. (U4C3L1:F1) Have you had any personal experiences with drugs like thoughts of doing them yourself, a friend talking to you about doing them, or someone in your life actually doing them?

2. (U4C3L1:Q1) Study the table and indicate the type of drugs that are described in rows X, Y and Z.

Drug	Forms of the Drug	Uses and Effects
X.	Capsules; pills; powder; rock	Stimulants; increased energy alertness; extreme anxiety; temporary mental illness
Y.	Tablets; red, blue & yellow capsules	Depressants; lower body temperature & blood pressure; distorted perception; slow reaction time; blurred vision; appear drunk without the smell of alcohol
Z.	Tablets, liquids, powder, gelatin squares, mushrooms	Altered physical senses; distorts time and space; in the user's mind; irrational behavior like violence or suicide to avoid an imagined attacker

3. (U4C3L1:Q2) Study the table and indicate the body parts (X, Y, and Z) that reflect the effects of alcohol abuse.

Body	Effects caused by alcohol abuse	Part
X.	Dehydration due to the production of too much urine, and the drinker loses more water than usual	

Y. Difficulty breaking down fats; cirrhosis leading to scarring; high blood pressure; infections occur more easily; death

Z. Depressed feelings; loss of sensation; decreased coordination; blurred vision; changes in breathing, pulse rate, and blood pressure

4. (U4C3L1:Q3) While giving a presentation about the dangers of drugs to a group of middle school students, one of the students asks you, "What's the best and safest way to quit drugs?"

What should you tell her first?

5. (U4C3L1:Q4) A friend of yours just had a very difficult couple of weeks. She was fired from her job; her car was repossessed; her boyfriend broke up with her; and she just failed a second math test in two weeks. Two of your other friends are arguing whether or not they should talk to her about drug use and abuse, so they ask you for your opinion.

Of the following options (A-D), what's the best thing you could you say?

6. (U4C3L1:G2) What is the leading cause of death of young people in the U.S.?

7. (U4C3L1:G3) What kinds of drugs are heroin, codeine, and opium?

8. (U4C3L1:G5) A substance whose manufacture, possession, or sale is controlled by law is called a _____.

9. (U4C3L1:G6) The _____ is the first organ damaged by long-term alcohol abuse.

10. (U4C3L1:G7) _____ is the most widely consumed and abused drug in the United States.

11. (U4C3L1:G8) What kind of drug is cocaine?

12. (U4C3L1:G9) _____ are drugs that act as depressants by lowering blood pressure and body temperature and by slowing heart and breathing rates.
13. (U4C3L1:G10) _____ is used legally as a medical sedative in Europe, but in the U.S. is called "the date-rape drug."
14. (U4C3L1:G11) Is alcohol a stimulant or a depressant?
15. (U4C3L1:G12) T or F: All illegal drugs are equally addictive.
16. (U4C3L1:G13) T or F: Alcohol and nicotine found in tobacco products are both addictive drugs.
17. (U4C3L1:G14) What is a controlled substance?
18. (U4C3L1:G15) T or F: It is possible to abuse only illegal drugs.
19. (U4C3L1:G16) T or F: One way to prevent drug abuse is to fill your life with people and activities you enjoy.
20. (U4C3L1:G17) Long-term alcohol abuse interferes with the _____ ability to break down fats.
21. (U4C3L1:G18) T or F: Tobacco is the most widely consumed and abused drug in the United States.
22. (U4C3L1:G19) Cocaine is an illegal drug that acts as a _____ on the nervous system.

23. (U4C3L1:G20) What are some of the medical uses for the stimulants known as amphetamines?
24. (U4C3L1:G21) Barbiturates are drugs that act as _____ by lowering blood pressure and body temperature and by slowing heart and breathing rates.
25. (U4C3L1:G22) T or F: Heroin is so addictive that it is not used as a medicine and it is illegal.
26. (U4C3L1:G23) _____ is used as a tranquilizer for animals but can cause hallucinations in humans.
27. (U4C3L1:G24) T or F: Rohypnol, the date-rape drug, is used legally as a medical sedative in Europe and Latin America.
28. (U4C3L1:G25) What drug contributes to heart disease and is a factor in 90 percent of teenage driving accidents, and 70% of teenage suicide attempts?
29. (U4C3L1:G28) What is an "over-the-counter" medication?
30. (U4C3L1:G29) T or F: A drug can have a medical use yet still be considered addictive.
31. (U4C3L1:G30) T or F: The chemicals in marijuana can alter your hearing, your sense of time, and your concept of space.
32. (U4C3L1:G31) T or F: Marijuana is generally tested for safety and rarely contains molds or pesticides that are harmful.
33. (U4C3L1:G32) What is a stimulant?
34. (U4C3L1:G33) What is a barbiturate?

35. (U4C3L1:G34) What kind of drug is alcohol?
36. (U4C3L1:G35) Drugs that alter the physical senses, producing sounds, visions, and smells that are not real and that distort the concepts of time and space in a user's mind are called _____.
37. (U4C3L1:G36) What is "Amotivational syndrome," and what drug causes it?
38. (U4C3L1:G37) Another name for illegal, synthetic drugs that have slightly-changed molecular structures is _____.
39. (U4C3L1:G38) T or F: Nicotine in its pure state is a toxic poison and is used in pesticides.
40. (U4C3L1:G39) Tobacco is considered a "gateway" drug. Define the term "gateway."
41. (U4C3L1:G40) How many Americans die yearly from smoking-related diseases?
42. (U4C3L1:G41) T or F: Breathing second-hand smoke can increase a person's risk of lung cancer, heart disease, and respiratory disorders.
43. (U4C3L1:G42) What percent of teenage automobile accidents involve alcohol?
44. (U4C3L1:G43) T or F: Seventy percent of teen suicide attempts involve alcohol.
45. (U4C3L1:G44) T or F: Nicotine in its pure state is safe for human consumption.
46. (U4C3L1:V1) Choose the term that best matches the definition below.
- "The incorrect or improper use of a substance"

47. (U4C3L1:V2) Choose the term that best matches the definition below.

"A substance whose manufacture, possession, or sale is controlled by the law"

48. (U4C3L1:V3) Choose the word that best matches the definition below.

"Something, such as a drug or alcohol, deemed harmful and usually subject to legal restrictions."

49. (U4C3L1:V4) Choose the word that best matches the definition below.

"Physically or psychologically dependent on a substance, habit, or behavior that can lead to health, social, and economic problems; dependence on a drug"

50. (U4C3L1:V5) Choose the word that best matches the definition below.

"Chemicals that cause a change in a person's body or behavior"

51. (U4C3L1:V6) Choose the word that best matches the definition below.

"Improper or excessive use or treatment"

52. (U4C3L1:V7) Choose the word that best matches the definition below.

"A beverage containing ethanol or ethyl alcohol which causes intoxication"

53. (U4C3L1:V8) Choose the term that best matches the definition below.

"A term attached to alcohol and tobacco due to the fact that their use often leads to further drug abuse"

54. (U4C3L1:V9) Choose the word that best matches the definition below.
"Heated and condensed to purify, forms a new substance, or concentrate"
55. (U4C3L1:V10) Choose the term that best matches the definition below.
"To produce a chemical change in a carbohydrate material, resulting in alcohol"
56. (U4C3L1:V11) Choose the term that best matches the definition below.
"The type of alcohol in beer, wine, and distilled spirits"
57. (U4C3L1:V12) Choose the word that best matches the definition below.
"Drunk; affected by alcohol to the point that physical and mental control are significantly impaired"
58. (U4C3L1:V13) Choose the term that best matches the definition below.
"Addiction to a substance"
59. (U4C3L1:V14) Choose the word that best matches the definition below.
"Drugs, drinks, or other substances that speed up the activity of the mind or body; a drug that speeds up activities of the central nervous system, the heart, and other organs"
60. (U4C3L1:V15) Choose the word that best matches the definition below.
"Low spirits; sadness; dejection"

61. (U4C3L1:V16) Choose the word that best matches the definition below.

"A drug medically used to relieve pain, produce sleep, and dull the senses"

62. (U4C3L1:V17) Choose the word that best matches the definition below.

"Drugs that cause hallucinations"

63. (U4C3L1:V18) Choose the term that best matches the definition below.

"The drug in tobacco that may act as a stimulant and cause addiction"

64. (U4C3L1:V19) Choose the word that best matches the definition below.

"The leaves of cultivated tobacco plants, prepared for use in smoking, chewing, or as snuff"

65. (U4C3L1:V20) Choose the word that best matches the definition below.

"Medications or chemicals that are inhaled"

Cadet Name: _____

Date: _____

1. (U4C2L7:F1) True or False. If you have to be out in hot environments, you must take precautions to prevent heat emergencies.
2. (U4C2L7:F2) Why should you stay away from salt if you are going to be involved in some type of activity in the heat?
3. (U4C2L7:F3) The following list of symptoms are related to which type of heat injury?
 - Heavy sweating
 - Rapid breathing and pulse
 - Fainting or dizziness
 - Nausea
 - Vomiting
 - Exhaustion
4. (U4C2L7:F4) Which of the following is incorrect for treatment of heat cramps?
5. (U4C2L7:F5) Which of the following is a life-threatening emergency created as a result of the body's inability to regulate its core temperature?
6. (U4C2L7:F6) You are in charge of a community service project. Today's weather report indicates that it is going to be hot and humid. Your volunteers are going to be working outside all day, and they have a number of tasks that have to be completed by the end of the day. You wrote some notes about heat injuries to help educate the volunteers, but you notice that one of them is incorrect.

Which of the following notes is incorrect?

7. (U4C2L7:Q1) You're a platoon sergeant. Today's weather report indicated that it was going to be hot and humid. Your squads are going to be working outside all day, and they have a number of tasks that have to be completed today. You wrote some notes about heat injuries to help you brief the squad leaders, but you notice that one of them is incorrect.

Which one of your following notes should you not brief to your squad leaders?

8. (U4C2L7:Q2) Read the following passage and select which type of treatment it describes.

"Move the victim to a cool, shady area; loosen the victim's clothing; pour water on or apply a cool wet cloth to the victim's skin; if possible, fan the victim; have the victim slowly drink one quart of water; elevate the victim's legs; monitor the victim until symptoms are gone, and seek medical aid if they continue; keep the victim from strenuous activities for the rest of the day."

9. (U4C2L7:Q3) On a hot summer day, you look out your window at your neighbor working in her garden. Suddenly, you see her collapse. You rush outside, and she is trying to get up, but she doesn't know where she is, and she says, "I think I'm going to vomit." As you try to help her sit up, her skin seems very hot and very dry, and she doesn't seem to be perspiring.

You realize she needs immediate aid so you move her quickly to a shady spot and start treating her for _____.

10. (U4C2L7:Q4) Read the paragraph below, and decide which option (A-D) is correct.

Jesse knew he was going to be working outside in hot, humid weather the next day, so he started preparing himself in order to avoid heat injuries. He drank one quart of water an hour, and he put a large amount of salt in his food to replace the water and salt he would lose. He chose loose clothing made out of natural fibers that would cover most of his skin. Since he was going to wear some heavy protective clothing, he planned his hardest work in the cooler hours of early morning and late afternoon.

Of all of his actions, which one is most likely to cause a heat injury?

11. (U4C2L7:G1) Why is excessive intake of salt bad for the body?

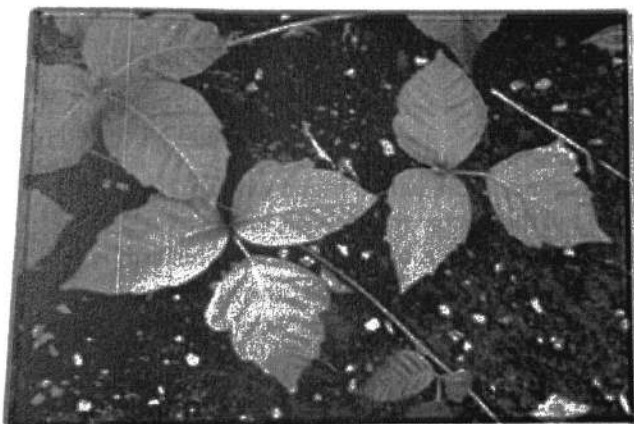
12. (U4C2L7:G2) Another name for the sweat evaporation that carries heat away from the body is _____.

13. (U4C2L7:G3) _____ is the condition that results when fluids are lost from the body and not replaced.
14. (U4C2L7:G4) When in a high heat or high humidity environment, what type of clothing should be worn to prevent heat exhaustion?
15. (U4C2L7:G5) _____ are muscular pains and spasms that are caused by loss of salt from the body due to heavy perspiration.
16. (U4C2L7:G6) What physiological event takes place during heat exhaustion?
17. (U4C2L7:G7) T or F: Heat stroke is the least severe of heat injuries and rarely leads to death.
18. (U4C2L7:G8) T or F: Individuals who show symptoms of fatigue are at higher risk for heat injuries.
19. (U4C2L7:G9) The most threatening kind of heat injury is _____.
20. (U4C2L7:G10) What causes heat cramps?
21. (U4C2L7:G11) What is dehydration?
22. (U4C2L7:V1) True or False. Dehydration is the condition that results when fluids are lost from the body and are not replaced.
23. (U4C2L7:V2) True or False. Fatigue occurs when someone has extra energy for getting things done.
24. (U4C2L7:V3) True or False. Ventilation is the circulation of air as a system or means of providing fresh air.

66
Cadet Name: _____




Date: _____

1. (U4C2L9:F1) Which is not one of the top three most common camping injuries as reported by the National Park Service?
2. (U4C2L9:F2) The most important thing to remember when treating a snake bite is to _____.
3. (U4C2L9:F3) How do you remove the stinger from an insect bite?
4. (U4C2L9:F4) Animal and human bites pose a high risk of _____.
5. (U4C2L9:F5) True or False. This is a poisonous plant that will cause a skin irritation with a red, itchy rash.



6. (U4C2L9:F6) Why do you apply pressure and immobilize the area when treating a snake bite?

7. (U4C2L9:Q1) You and a classmate are supposed to give a presentation on poisonous plants. Unfortunately, your classmate is sick, so you have to give the presentation yourself. Your classmate prepared this picture of the plants and their characteristics, but he didn't label them. From left to right, you should label the plants:

		
<ol style="list-style-type: none"> 1. Grows as a small plant, vine and a shrub. 2. Grows everywhere in California and some areas in adjacent states. 3. Leaves always consist of three glossy leaflets. 	<ol style="list-style-type: none"> 1. Grows as a woody shrub or small tree from 5 to 25 feet tall. 2. Grows in most of the eastern third of the U. S. 3. Leaflets grow opposite each other with one leaflet at the tip. 	<ol style="list-style-type: none"> 1. Grows in shrub, and sometimes vine form. 2. Grows in California and in some areas of adjacent states. 3. Leaves consist of three leaflets with wavy edges.

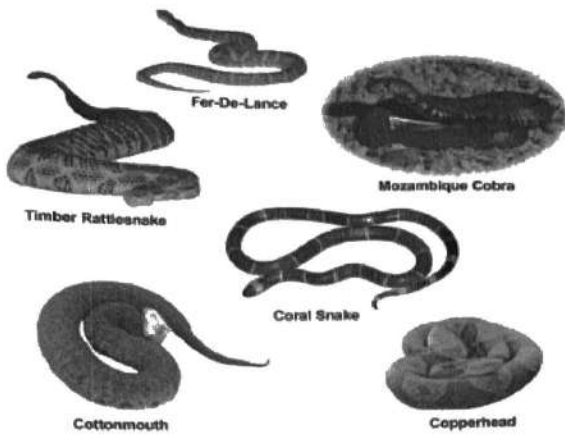
8. (U4C2L9:Q2) While you were helping a friend clear some sticks and leaves from behind her garage, she gets stung by something and is in extreme pain. On the way to the emergency room, you give first aid by cleaning the wound, and applying ice. After she gets treated, the doctor tells you that your quick action stopped the poison from causing severe tissue damage, and possibly gangrene, from setting in.

What bit your friend?

9. (U4C2L9:Q3) While waiting in the emergency room with a friend who sprained his ankle, some parents rush in with their son and tell the doctor that he was bitten by a snake an hour ago, and they drove straight to the hospital. Their son is barely conscious, his arm is swollen, and he looks like he threw up on himself. Even you can tell that they have to administer antivenin quickly or he will die. If you were the doctor, what would you ask them to determine which antivenin to give?

(For printed tests, refer to image #17 or U4C2L9Q3-Poisonous-Snakes.jpg in the Image Library)

on poisonous
ation yourself.
but he didn't label



10. (U4C2L9:Q4) You volunteered to be an assistant instructor for a first aid class on Bites, Stings, and Poisonous Hazards. You told the instructor that you would be a couple minutes late, but that you would join him as soon as you could. When you arrive, the instructor is talking about treating something, but you don't know what. He says, "After cleaning the area around the wound, apply constricting bands above and below the site. Continue to monitor lifesaving signs." In front of the class he asks you if you know what treatment he's talking about.

What should you say next?

11. (U4C2L9:G1) Name the three types of venoms.
12. (U4C2L9:G2) What type of venom affects the nervous system and can cause death by paralysis?
13. (U4C2L9:G3) What type of venom digests tissues, including blood cells?
14. (U4C2L9:G4) What are the indicators of a hemotoxic snake-bite injury?
15. (U4C2L9:G5) Although not all snakes are poisonous, all snakes may carry what infection?
16. (U4C2L9:G6) For snake bites on arms and legs where are constricting bands placed?

29. (U certain ba rigidity, and
17. (U4C2L9:G7) Name the viral disease that affects the central nervous system of mammals that is transmitted by bites and can result in paralysis and death if left untreated.
18. (U4C2L9:G8) Venom from black widow spiders and tarantulas is what kind of toxin?
19. (U4C2L9:G9) Name a common household ingredient that can be used to make a paste to relieve pain and itching of insect bites.
20. (U4C2L9:G10) What should you do to treat skin that has come into contact with a poisonous plant?
21. (U4C2L9:G11) Snakes are carriers of what acute disease?
22. (U4C2L9:G12) Severe burning pain, discoloration, and swelling around bite marks are characteristics of what kind of bite?
23. (U4C2L9:V1) A pink powder called _____ consists of zinc oxide and some ferric oxide and is used in lotions and ointments.
24. (U4C2L9:V2) A(n) _____ is a physical reaction, often marked by sneezing, breathing difficulties, itching, rash, or swelling, that some people have when they come in contact with certain substances.
25. (U4C2L9:V3) _____ is a poison produced by animals such as snakes and spiders that is transmitted by a bite or sting.
26. (U4C2L9:V4) A viral disease called _____ affects the central nervous system of mammals and is transmitted by a bite from an infected animal. It can result in paralysis and death if left untreated.
27. (U4C2L9:V5) _____ is an altered or changed color.
28. (U4C2L9:V6) An antitoxin used to counteract venom is _____.

29. (U4C2L9:V7) An acute infectious disease called _____ is caused by the poison of a certain bacterium that enters the body through a wound, resulting in muscle contractions, rigidity, and death.