



**School Administrative Unit #31
Newmarket School District**
186A Main Street, Newmarket, NH 03857
(603) 659-5020 Fax (603) 659-5022
www.newmarket.k12.nh.us



Susan K. Givens, Ed.D.
Superintendent of Schools

Erica C. MacNeil, M.Ed.
Director of Student Services

May 5, 2020

*Request for Proposals
for
“Portable Bleachers”
Newmarket Elementary School*

Contact: *Dave Jack*
Interim Business Administrator
SAU #31 Newmarket School District
186 Main Street
Newmarket, NH 03857
[*jackd@newmarket.k12.nh.us*](mailto:jackd@newmarket.k12.nh.us)
(603) 292-7984

Introduction

The Newmarket School District (hereinafter referred to as SAU #31) seeks proposal to furnish, deliver and assemble portable bleachers for the Newmarket Elementary School gymnasium .

It is the intent of SAU #31 to use this RFP as a competitive means to enter into a contract or multiple contracts with the selected Contractor for **“Portable Bleachers”**

Proposal shall include all labor rates and mark-up of materials as requested on the attached proposal sheet included.

Contractor Response

General Information

For further information, please contact:

David Jack
Interim Business Administrator
SAU #31 Newmarket School District
186A Main Street
Newmarket, NH 03857
Phone: 1-603-292-7984

Due Date:

Proposals must be **received** at the below address on or before June 3rd at 10:00am at which time the submission will be publicly opened and read aloud. The results will be recorded on a bid tabulation form which will be made available upon request within seven (7) days after the submission opening date.

Submission delivered/provided after the due date and time will not be considered.

Submit Proposal

Quantity: one (1) on supplied form in a sealed envelope clearly marked “Portable Bleachers”

Delivery of submission:

Mailing Address:

SAU #31 Newmarket School District
Attention: Michelle Martinson
Newmarket Town Hall
186 Main Street
3rd floor Business Office
Newmarket, NH 03857

Funding for this Request for Proposal is available July 1, 2020 at the start of the 2020/2021 Fiscal year.

SAU #31 Newmarket School District reserves the right to waive any of the formalities of this RFP, to request additional information from any respondent, to negotiate with any respondent, to negotiate with more than one respondent, to reject any or all proposals or parts of proposals, to solicit new proposals, and to award contracts to one or more respondents or to reject any or all respondents as it deems in its best interest. The issuance of this RFP does not guarantee that a contract will be awarded. Any proposal received after the time specified will be considered a late proposal. Following evaluation of all proposals, the School may do one or more of the following: (1) conduct interviews with representatives of one or more of the respondents; (2) select an apparent successful respondent and enter into contract negotiations; selected for award based on the proposals, and commence negotiations with those respondents, and then invite those respondents to submit best and final offers; or (4) reject all proposals if it is determined to be in the best interests of the SAU #31 Newmarket School District.

All submission respondents shall supply proof of insurance with the SAU #31 Newmarket School District being named as an additional insured based on the limits required for all vendors/contractors working within the Newmarket School District. Vendors/contractors shall supply the SAU#31 Newmarket School District with the properly filled out submission of IRS form W-9 upon award. Failure to supply required submissions shall constitute submission award withdrawal and award to the next qualified submission.

Scope:

SAU #31 is seeking proposals for five (5) Portable bleachers based on Hussey Seating model Maxam1 XD, red in color, and courtside 12 seating or equal type and design. The bleacher proposal shall include bleachers, delivery, assembly and placement in the Newmarket elementary School Gymnasium. General specification for the Hussey Seating model Maxam1 XD has been included for reference. Newmarket School District is not requiring that the bleachers be by Hussey Seating but shall meet the general design, operations and sizing for a 3 tier system.

Proposal for
“Portable Bleachers”
Newmarket Elementary School
Newmarket School District

Cost per unit delivered and assembled: _____

Submission: _____ (Corporation, Firm, Individual or Company)

By: _____ (Officer, authorize Individual or Owner)

Name: _____

Mailing Address: _____

Zip Code: _____

DATE: _____

Telephone: _____ Fax: _____

E-Mail: _____

Does the ownership or stock holders have relatives currently employed by the Town of Newmarket or the Newmarket School District?

Yes_____ No_____ If yes: Relationship: _____

NOTE: Bids must bear the handwritten signature of a duly authorized member or employee of the organization making the bid. By signing this submission, you agree to all terms and conditions as detailed in the bid specifications. SAU #31 reserves the right to accept or reject any submissions.



PORTABLE BLEACHERS



husseyseatingTM
YOUR PARTNER FOR SEATING SOLUTIONS

Portability, Flexibility and Safety – All In One!

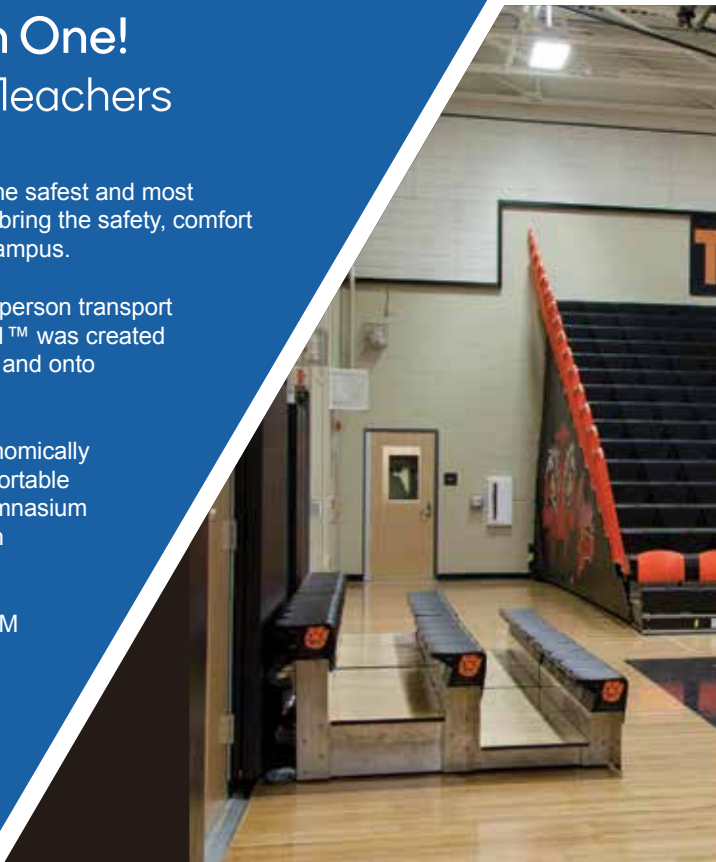
MAXAM 1™ and MAXAM 1™ XD Portable Bleachers

The next generation in portable bleacher seating is MAXAM 1™. Designed to be the safest and most comfortable portable bleachers available, MAXAM 1™ Portable Bleachers quickly bring the safety, comfort and durability of large gym bleacher systems to nearly any spot on your facility's campus.

One person. MAXAM 1™ Portable Bleachers are designed for quick & easy one-person transport and one-person operation. Hussey's legendary attention to detail means MAXAM 1™ was created with your environment in mind – whether that means fitting through tight doorways and onto elevators, or providing the safest portable bleacher system to own and operate.

One design. As the first – and only – closed deck portable bleachers to offer ergonomically contoured polymer seats, MAXAM 1™ delivers unmatched comfort. MAXAM 1™ Portable Bleachers aesthetically match our MAXAM telescopic bleachers for a seamless gymnasium appearance. Easily pump up the spirit with our customization options; you can even choose the decking material that works best for you.

Get the one changing the game. Take the great quality and durability of MAXAM anywhere you want to go – our tough yet lightweight aluminum frame means you can use MAXAM 1™ virtually anywhere*. Take your seating from courtside to rink-side, indoor pool to cafeteria, auditorium stage to meeting room with a new level of ease, safety and comfort backed by a best-in-class 5-year manufacturer's warranty.



One simple move. Designed to fit through a door as narrow as 32" (813mm) wide, MAXAM 1's™ multi-directional casters make it easy to get your seating to where it's needed. You're not stuck courtside anymore – take MAXAM 1™ Portable Bleachers all over campus. Since it will even fit onto common freight elevators or large capacity passenger elevators, you can easily move units from floor to floor.



The one for every outdoor event. We took the flexibility and portability of MAXAM 1™ and added the ability to use weather-resistant bleacher covers to create a weather-resistant seating area. Combined with the marine grade deck, it's the perfect solution for any environment.

Engineered for Easy Use Facility-Wide



One minute – one person. We engineered MAXAM 1™ Portable Bleachers to be operated by a single person. Just extend each of the traction arms, tip the unit, give it a gentle push to lock it down, and it is ready to go. Gas struts provide a controlled descent and lift assistance to ensure easy operation. No more waiting for a crew or scheduling extra labor – just keep saving labor time and cost for the entire life of your seats.



One answer – anywhere. MAXAM 1™ Portable Bleachers are perfect for schools, colleges, fitness clubs, recreation centers, community centers, sports fields and more. You can even connect multiple units together. You can use them in any environment. Get creative, and think outside the box.



Get Seating with More Safety and Comfort



One safe solution- anywhere, anytime! Safe seating is our first priority as well as yours. MAXAM 1™ sets a new standard for tip & roll bleachers by featuring a closed deck design to eliminate fore to aft openings and actively prevent foot slip-through injuries. Choose from classic wood decking or slip-resistant Polydeck in several colors. The gas strut controlled descent and lift assistance prevents back injuries and limit liability.



One comfortable solution. Comfortable portable bleachers are no longer a dream with MAXAM 1's™ CourtSide™ polymer seat modules. Incorporating a unique fore to aft contoured seat and a gradual "waterfall" curve on the forward edge, they reduce pressure to the thighs regardless of leg position. Seat spacers with or without cup holders are also available.



MAXAM1XD is the weather fighting solution for your outdoor portability of the MAXAM1 and designed it to stand up to outdoor athletics events and concerts. The Perma-Cap® vinyl resistant seat that combats extreme heat and cold weather. Tucking, you have a flexible seating solution for every fan in

Complete Customization Options



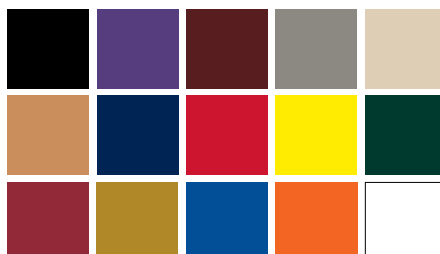
The end of each seat row or the front of the bleacher offers a spot for your school's logo, mascot, or spirit message. These durable graphic logos are full-color and customizable.



MAXAM 1™ Portable Bleachers fit in just about anywhere retail & corporate training areas, recreation facilities, and playgrounds. Handling larger groups is easy – simply can even use it outdoors temporarily in protected areas*. gym!

Colors

MAXAM1



Choose from 15 standard interior colors for our CourtSide™ seat modules, or opt for custom color matching to turn up the school spirit.

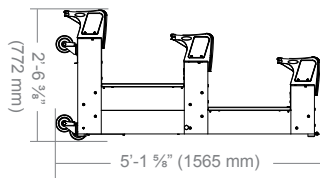
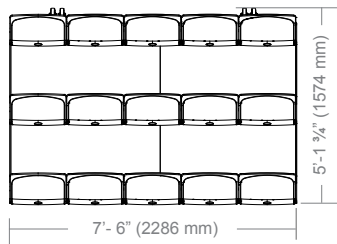
MAXAM1 XD



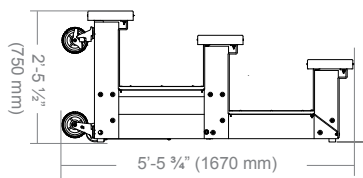
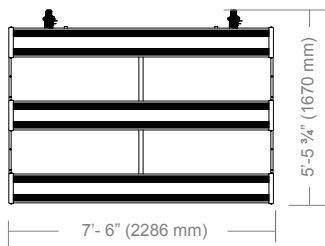
Choose from these 13 colors from our exterior line. Actual colors and finishes may vary from printed color shown.

Dimensional Data

MAXAM1



MAXAM1 XD



Resources

For all accessories, surface materials, fast facts, environmental data sheets and more go to HusseySeating.com/maxam1

Warranty

MAXAM1: 5 year factory-backed warranty - the best in the industry.

MAXAM1 XD: 5 year understructure and 3 year for decking and moving parts.



Hussey Seating Company™

The Hussey Seating Company story dates back to 1835 with William Hussey's tremendously successful plow design, and thus, the Hussey Plow Company was born. As times changed over the next ninety six years, the family set about reinventing the business, evolving into the company that is now seating the world. Today, under the sixth generation of family leadership, Hussey Seating Company is proud to be known as the leading manufacturer of seating solutions throughout the world – in stadiums, arenas, schools, universities, colleges, places of worship and anywhere people gather.

Your partner for seating solutions.



husseyseating™
YOUR PARTNER FOR SEATING SOLUTIONS

38 Dyer Street Extension
North Berwick, Maine 03906 USA
Toll Free (USA) 1.800.341.0401
Tel: +1.207.676.2271
Fax: +1.207.676.2222
info@husseyseating.com
www.husseyseating.com

Regional Offices:

Europe & Middle East
Hussey Seatway
www.husseyseatway.com

Asia-Pacific
Hussey Asia-Pacific
www.husseyasiapacific.com



School Administrative Unit #31
Newmarket School District
186A Main Street, Newmarket, NH 03857
(603) 659-5020 Fax (603) 659-5022
www.newmarket.k12.nh.us



Susan Givens, Ed. D.
Superintendent of Schools

Erica MacNeil
Student Services

Addendum #1
Elementary Bleachers RFP

May 15, 2020

Clarifications

- The RFP is for five (5) INDOOR Portable bleachers based on Hussey Seating model Maxam1, not model Maxam 1 XD (for outdoor use) as indicated in the original request.
- Bids should be based on approximately 10" seats, approximately 15 seats per section of bleachers.

This addendum must be included within the contract proposal submission. Failure to include this addendum shall disqualify your submission.

Submission: _____ (Corporation, Firm, Individual or Company)

By: _____ (Officer, authorize Individual or Owner)

Name: _____

Mailing Address: _____

Zip Code: _____

DATE: _____

Telephone: _____ Fax: _____

E-Mail: _____