

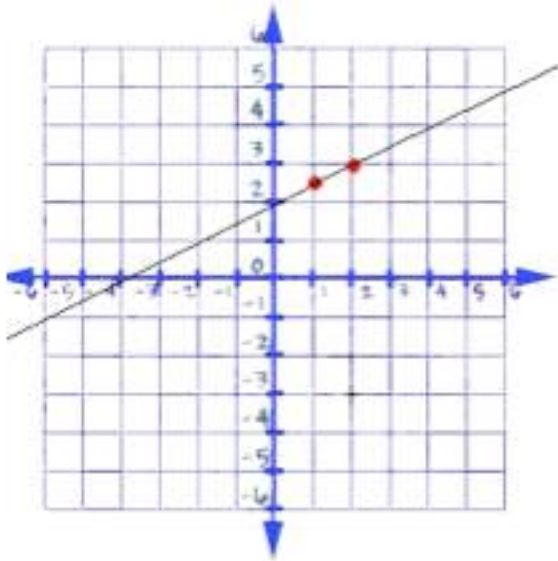
ALGEBRA I

NAME: _____

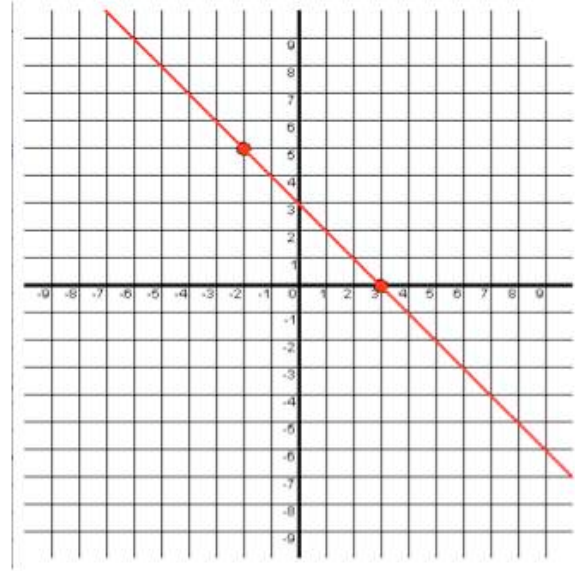
RETAKE EXTRA PRACTICE LINEAR EQUATIONS QUIZ (Please see my website under the title "Linear Equations" for video tutorials over these problems)

Write the equation of the line shown in the graph.

1.



2.



3. Write the equation of the line that has a slope of $-\frac{2}{3}$ and y-intercept of 3.

4. Write the equation of the line that has a slope of $\frac{1}{3}$ and goes thru $(-4, 2)$.

5. Write the equation of the line that has a slope of 4 and goes through $(-5, 3)$.

6. Write the equation of the line that goes thru $(-3, 3)$ and $(7, 4)$.

7. Write the equation of the line that goes thru $(5, 6)$ and $(4, -4)$.