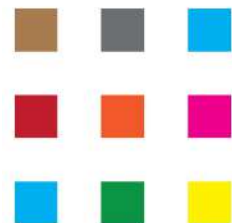




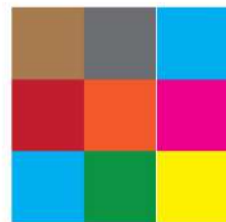
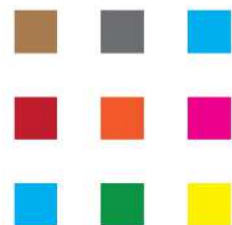
In process



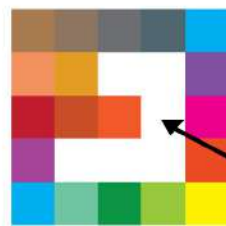
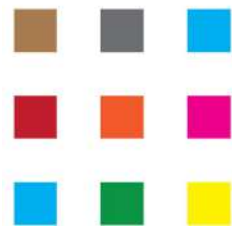
Starting Size



Making the Image Larger



Option 1: Larger Pixels



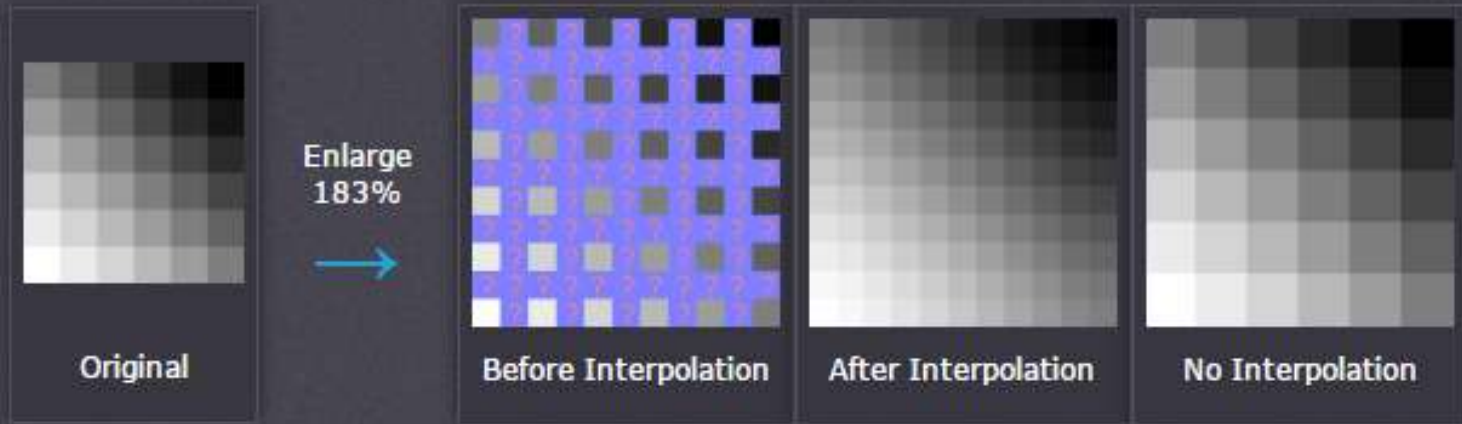
Option 2: Interpolate Pixels



tries to fill in blank pixel area with inbetween color

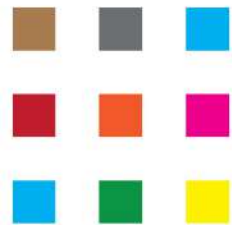
IMAGE RESIZE EXAMPLE

Image interpolation works in two directions, and tries to achieve a best approximation of a pixel's color and intensity based on the values at surrounding pixels. The following example illustrates how resizing / enlargement works:

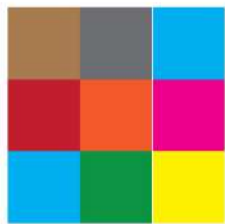
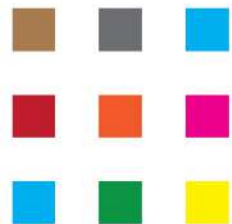




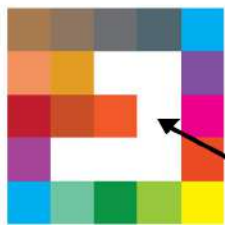
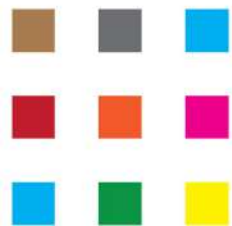
Starting Size



Making the Image Larger



Option 1: Larger Pixels



Option 2: Interpolate Pixels



tries to fill in blank pixel area with inbetween color

Changing:

Changing:

Changing:

