

# Year 10 (virtual) Art Exhibition

As part of the development of their spatial creativity, the 2019-2020 Year 10 IGCSE Art & Design class had to replicate six well-known artworks, using themselves, and anything or anyone they had at home during COVID-19, as props. They then had to find out more about the original artworks in terms of its title, year painted, medium used, the artist, the art movement, and the backstory to the artwork.

Students are: Amirul, Ayda, Hana, Masouma, Nicco and Rayan



Title: Portrait of Dora Maar

Year Painted: 1937

Medium: Oil paint

Artist: Pablo Picasso

Art Movement: Surrealism

Backstory: A new woman in Picasso's life, a friend photographer and this is a portrait to honour her. . In this painting she is seated in an armchair, smiling and resting her head on her long -fingered hand.





Title: The Son of Man

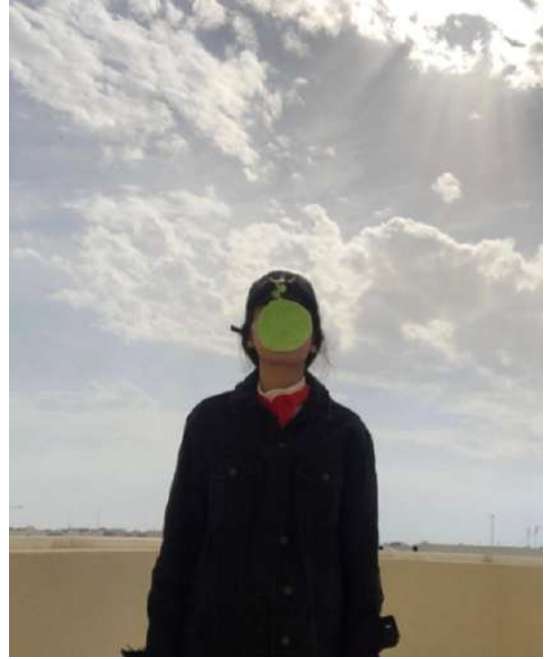
Year Painted: 1964

Medium: Oil Paint

Artist: Rene Magritte

Art Movement: Surrealism

Backstory: His 'self-portrait' face is hidden by a hovering apple where his message is presented that "We always want to see what is hidden", creating curiosity and interest.







### The desperate Man

By Gustave Courbet

Created in : 1843-1845

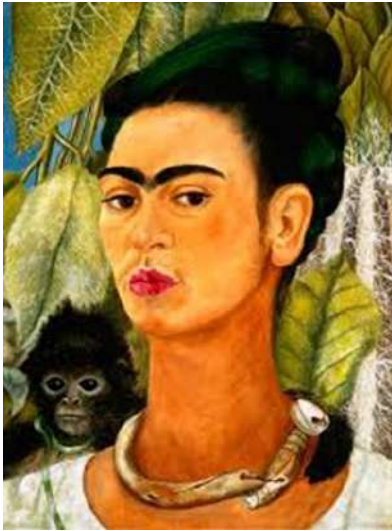
Medium: Oil painting

Period: Romanticism, Academic art

Backstory: This painting embodies Courbet and his personality. Courbet was an individual and wanted to make his own way when it came to art. He wanted to push the limits of what was acceptable at the time and he did this by producing works like this self-portrait. In this painting he stares directly at the viewer as he wants the viewer to pay attention to him.







### Self-Portrait with monkey

By Frida Kahlo

Created in: 1945

Medium: Oil paint

Period: Naïve art

Backstory : The bone necklace and the blouse she wears represents her Mexican roots. The pet monkey by her shoulder is a symbol of her love for childhood home in Mexico where she grew up with many exotic pets roaming around. The monkey around her neck is also a metaphor for safety as it is wrapped around her neck as if it is protecting her.







Title: Absinthe Drinker

Year Painted: 1901

Medium: Oil paint

Artist: Pablo Picasso

Art Movement:

Backstory: Dramatic image of isolation in a loneliness café, the message is an exaggeration with the bottle of alcohol in front of him. Picasso produced this work in the autumn of 1901, during his second trip to Paris. It represents the theme of lonely men in cafes and bars.





**Title-** Green Stripe

**Year painted-** 1913

**Medium-** Oil on canvas

**Artist-** Henri Matisse

**Art movement-** Fauvism

**Backstory-** Henri Matisse painted a portrait of his wife. The green line going down her face divides the face with one dark side and one light side to allow the colours to contrast off each other. The divide provides an illusion of a dark and light side without using the traditional shading techniques.

