



Understanding the 2016 Referendum Proposal



# Our Framework for the Future



## **Mission** Our core purpose

**Our mission is to educate all learners to reach their full potential as contributing and productive members of our ever-changing global community.**

## **Core Values**

What drives our words and actions

**Partnership:** Collaboration of resources and talents to achieve high mutual goals for the benefit of all

**Innovation:** Creative problem solving connecting creativity with usefulness

**Respect:** Valuing ourselves, each other and our world across all differences

**Wise Stewardship:** Developing and effectively using our knowledge, human, financial, physical and environmental resources

**Accountability:** Holding ourselves and each other accountable for our actions and words

**Strive for Excellence:** Committing to continuous learning and improvement

## **Vision**

A compelling educational picture of what we intend to create

Sustainable environmental focus recognized at the state and national levels

Challenging, diverse and personalized learning

A culture of excellence fostering a love of learning and appreciation of the arts and activities

Safe and respectful schools

A district of stakeholder partnerships

Technology enhancing instruction, communication and administration

Innovative and flexible staffing through wise financial stewardship

## **Strategic Directions**

Goals that guide educational programs, services and applied resources

Increasing measurable student growth and achievement

Continue financial accountability to community while using available resources to educate students and maintain class-size targets

Expand innovative programming to meet family needs

Expand and embed environmental focus across the district

Integrating technology for teaching and communications; increasing capacity to set standards for all learners using 21st century skills

Engage parents, families and community to strengthen a culture of respect and inclusion

# Process to Study Enrollment Growth

1  
Year

## STUDIED:

Demographic Projections

E-12 Capacity Study

All-Day Kindergarten

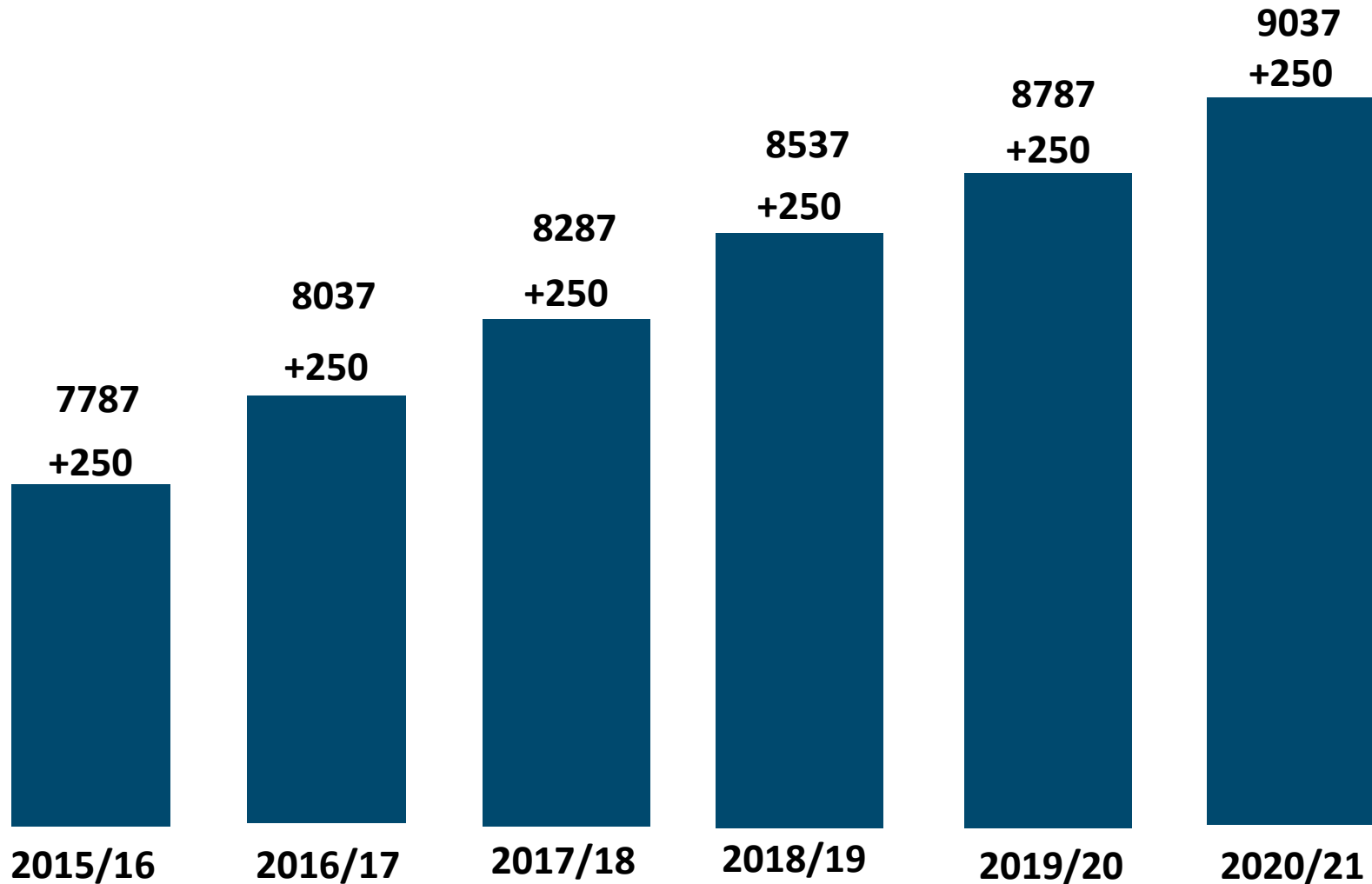
Innovative Programs

Current Enrollment

Open Enrollment

City Building Permits

# 1,500 more students are expected by 2021



**250 additional students every year**

Source: Schoolfinances.com, 2015 Demographic Study



# New Residential Developments

## 5-Year Projections

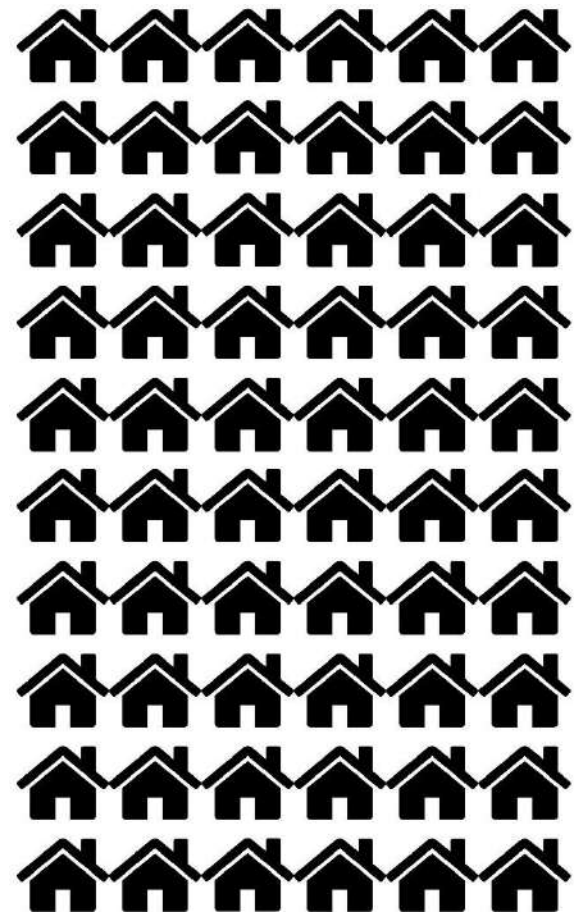
Prior Lake, Total Units

**825**



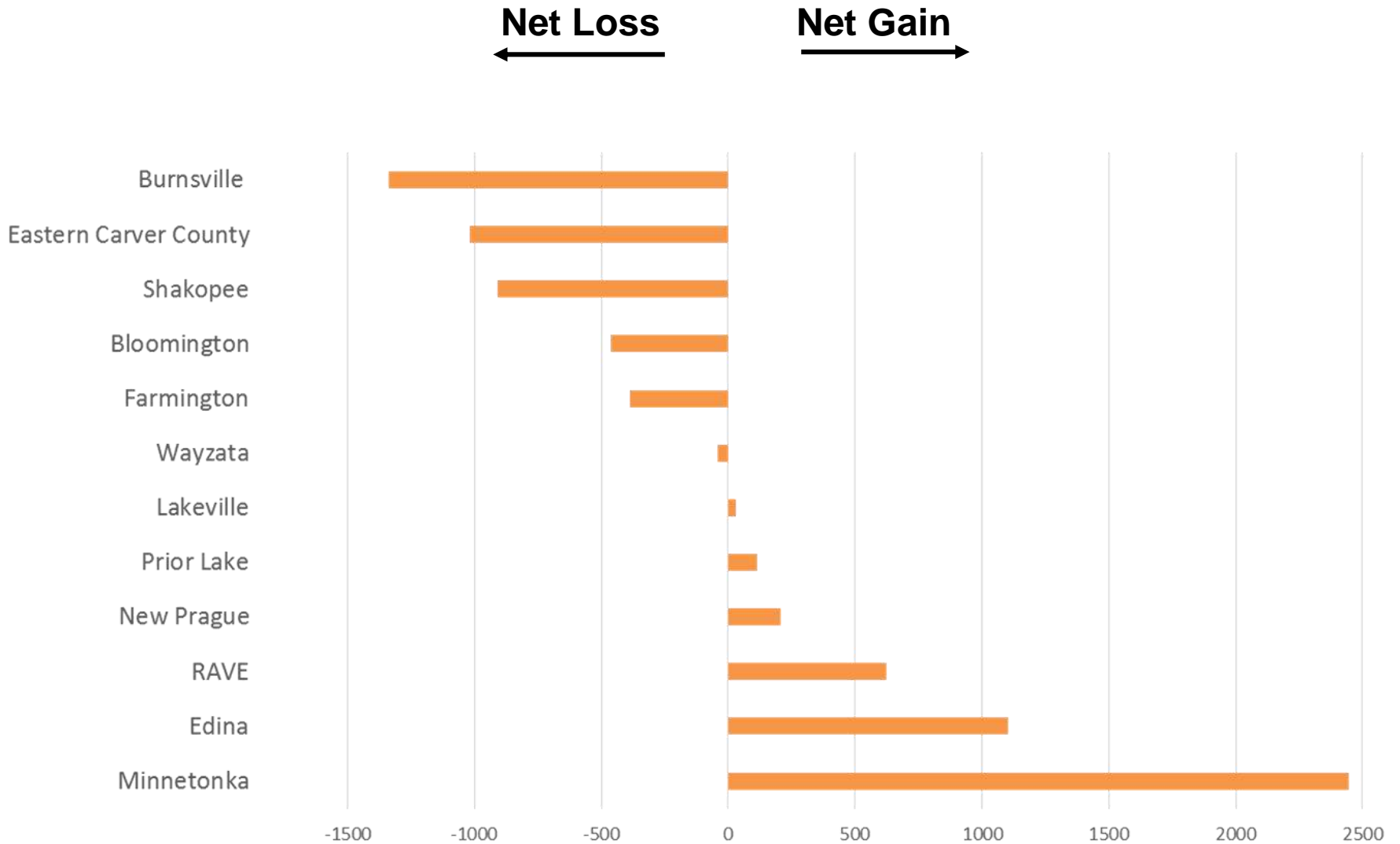
Savage, Total Units

**400**



Sources: City of Prior Lake, City of Savage

# Open Enrollment



# A School District of Choice



**Digital  
Learning**

**E-STEM**

**Personalized  
Learning**

**La ola del lago  
SAGE  
Bridges ALC  
Quality Pre-K**



## QUALITY OF EDUCATION

**91** % EXCELLENT  
OR GOOD







## STAFF JOB PERFORMANCE

**93%** EXCELLENT  
OR GOOD





# Referendum Request

---

**Space for Students**

**Technology for Teaching & Learning**

**Security for Schools**



**2 Community Information Nights**  
**Phone Survey**  
**Comment Cards**  
**Emails**

# One Question on the Ballot

---

1 Question

Bond for Building

Technology Levy





# Space for Students



## Elementary

**New K-5 Elementary School**

**Additions and renovations at every school**

**Space for SAGE, La ola del lago and preschool**

**Space for Special Education**



## Middle School

**Additions and renovations at both schools**

**Expand and renovate Twin Oaks Auditorium**

**Improve site safety in parent drop-off area**



## High School

**New Area Learning Center**

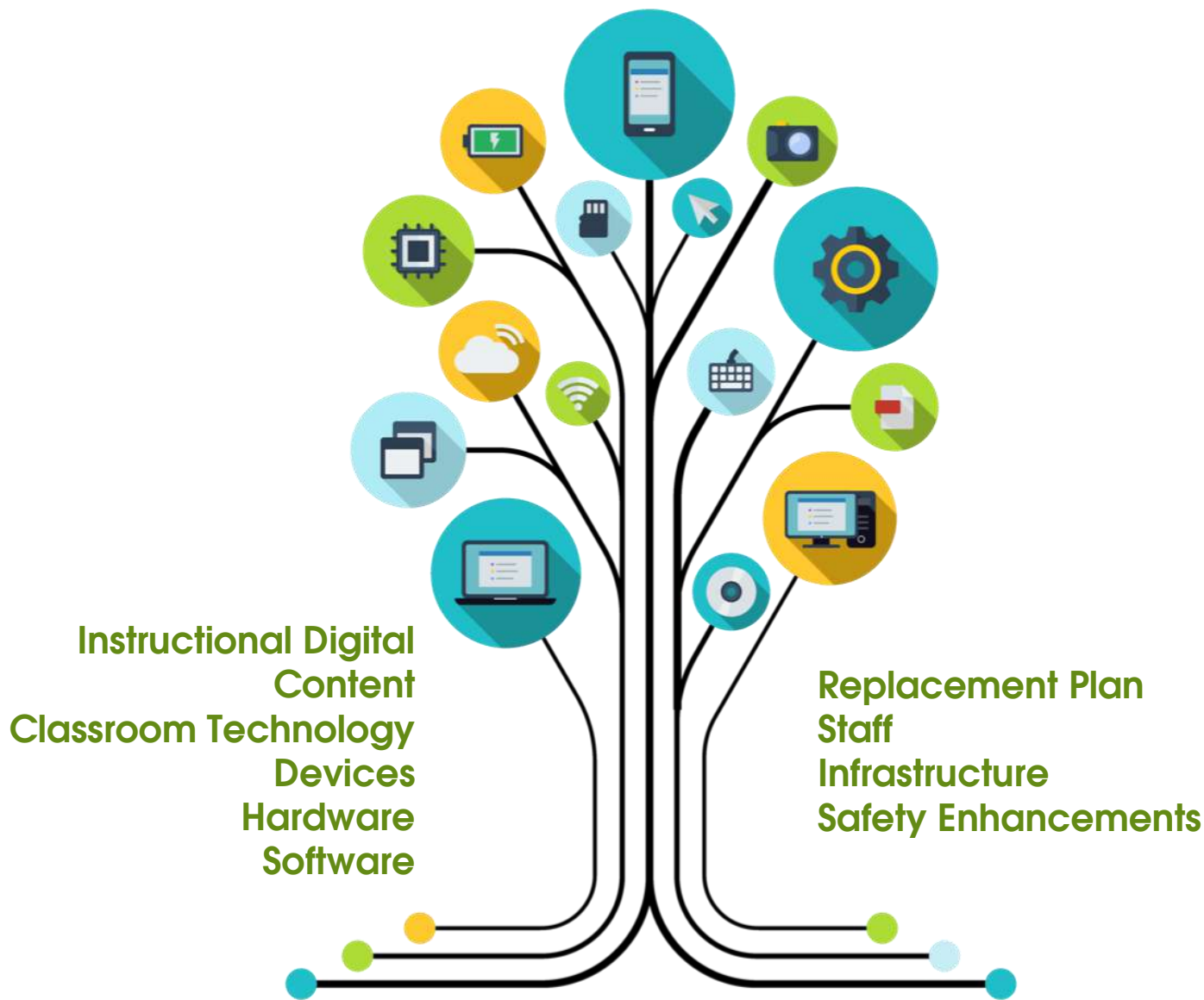
**Classroom and office additions**

**Secure front entrance**

**Expanded facilities for curricular & co-curricular  
athletics and activities**

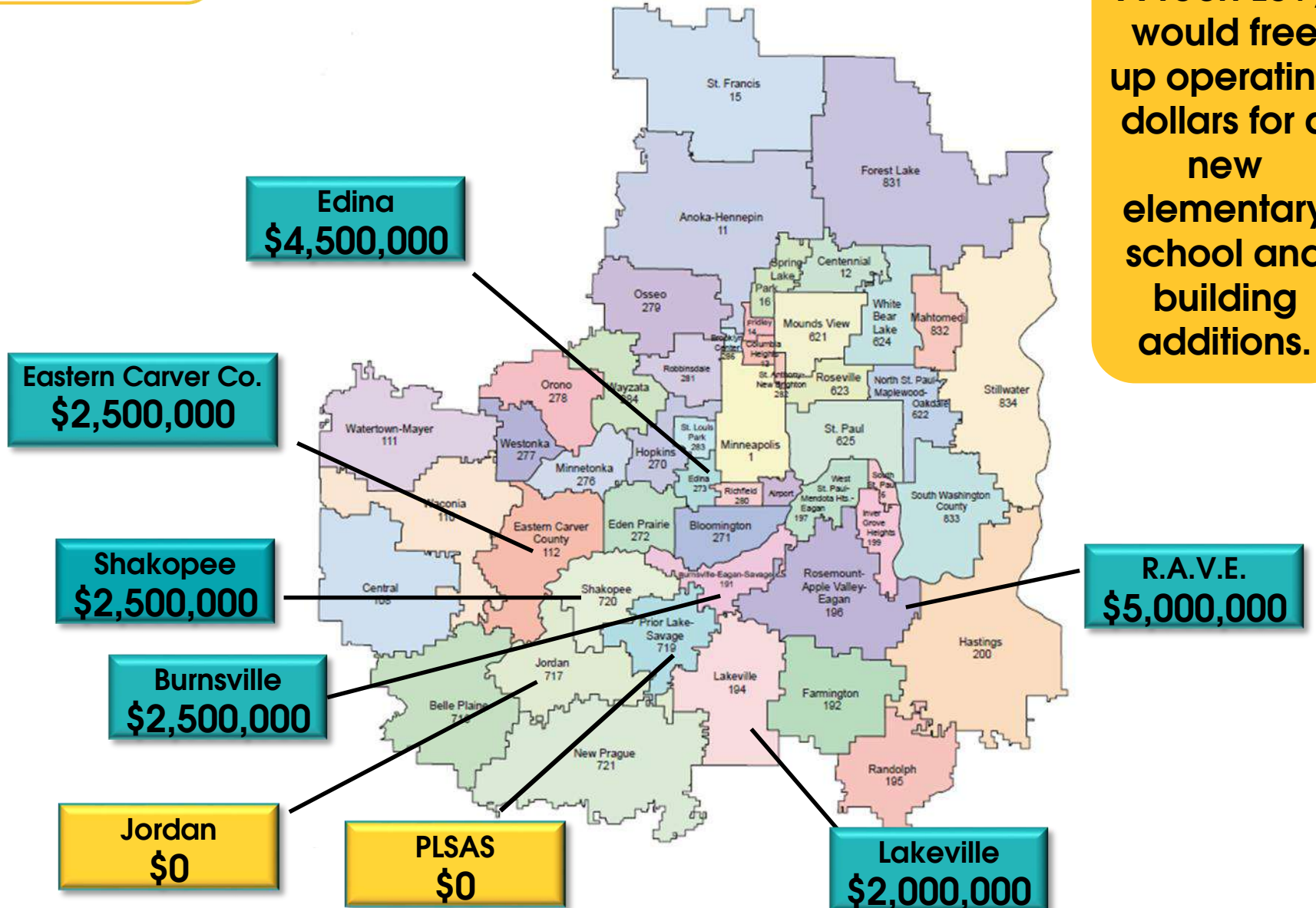
**Expanded kitchen & cafeteria**

# Technology for Teaching and Learning



# Technology Levy Comparisons

A Tech Levy would free up operating dollars for a new elementary school and building additions.





# Security for Schools



**New entrance at PLHS**  
**Visitor screening system for all schools**  
**Security cameras for all schools**



# One Question for Two Funding Streams

## Tax Impact

**\$31/month**

**\$300,000**  
(Average Home Value)

- **\$129 Million Bond Over 20 Years**
- **\$2.125 Million Per Year 10 Year Technology Levy**

# What if the Referendum Does Not Pass?



**Class sizes would increase**

**Growth would continue, adding pressure on schools**

**Attendance boundaries may need to change**

**Limited ability to maintain classroom technology &  
innovative programming**

# Referendum Summary

---

**We've Had A Thorough Process  
We Listened To Our Community  
We Are Presenting A One-Question Ballot**





# Referendum Summary

---

**Space for Students**

**Technology for Teaching & Learning**

**Security for Schools**





[www.priorlake-savage.k12.mn.us/referendum](http://www.priorlake-savage.k12.mn.us/referendum)