

# Reading and Understanding Circle Graphs, Bar Graphs, Line Graphs, & Informational Graphics

# Why Do We Care?

- Important in science!
- News!
- Make a point!
- Become a better candidate!
- Become a better citizen of the world!

# What should I know?

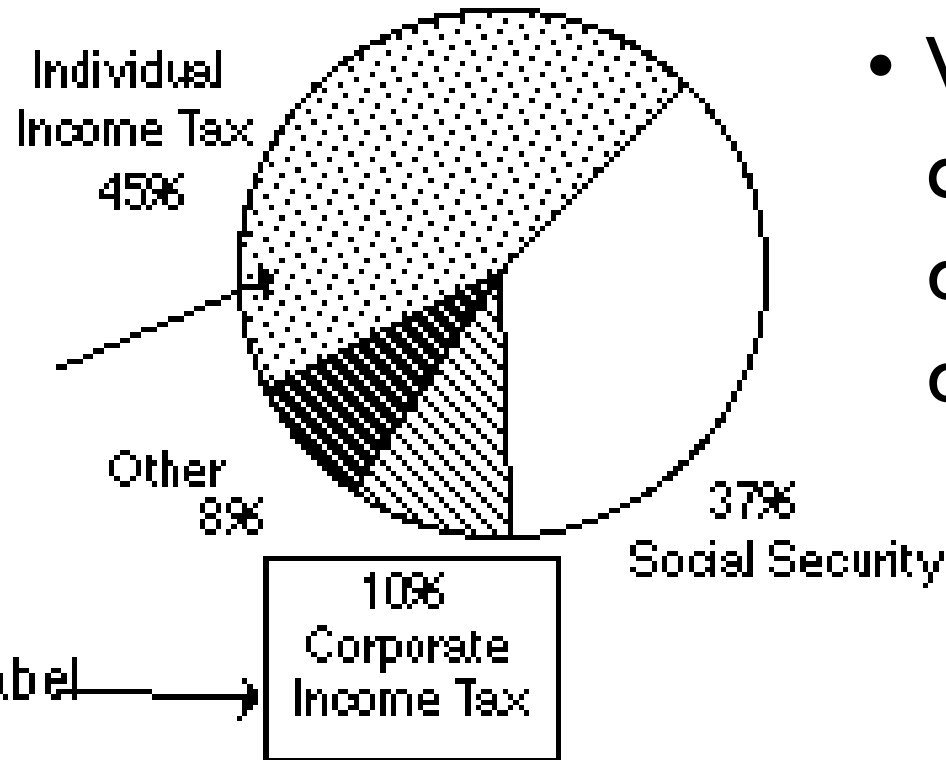
- How to properly read a graph
- How to understand what is being said
- How to create your own graph
  
- Why?
  - See previous slide!

# Circle Graphs

Graph Title

Revenue Sources for the  
Federal Government

One Sector

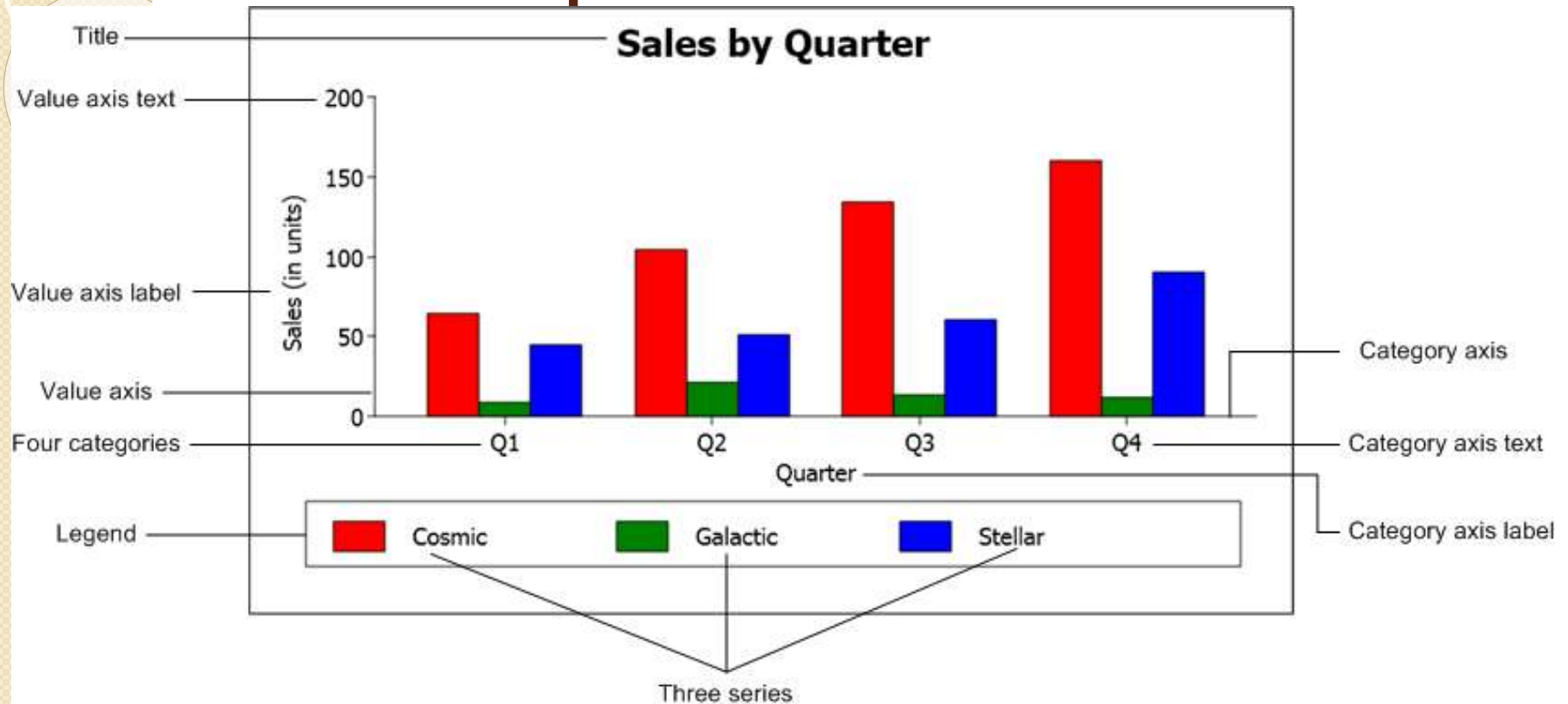


A Sector Label

10%  
Corporate  
Income Tax

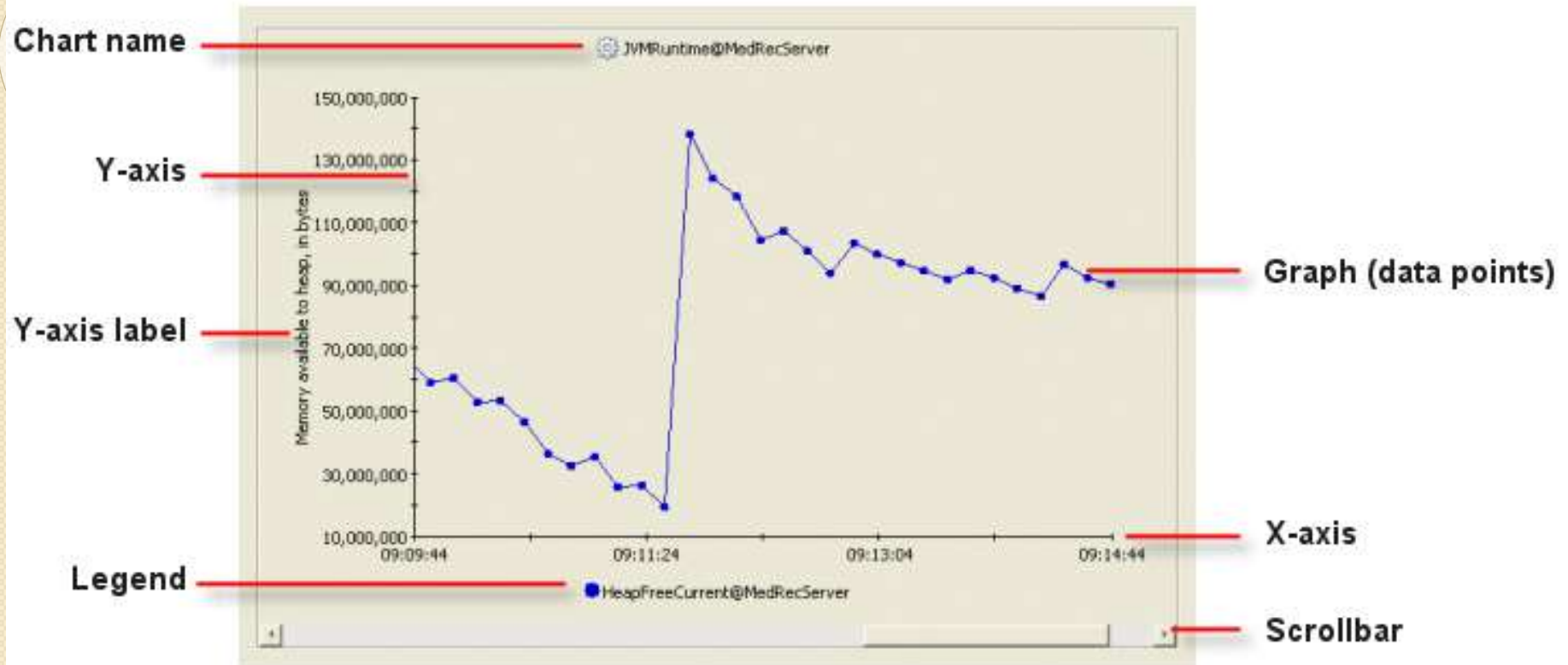
- What's missing?
- What could be done differently?

# Bar Graphs



- What's missing?
- What could be done differently?

# Line Graph



- What's missing?
- What could be done differently?

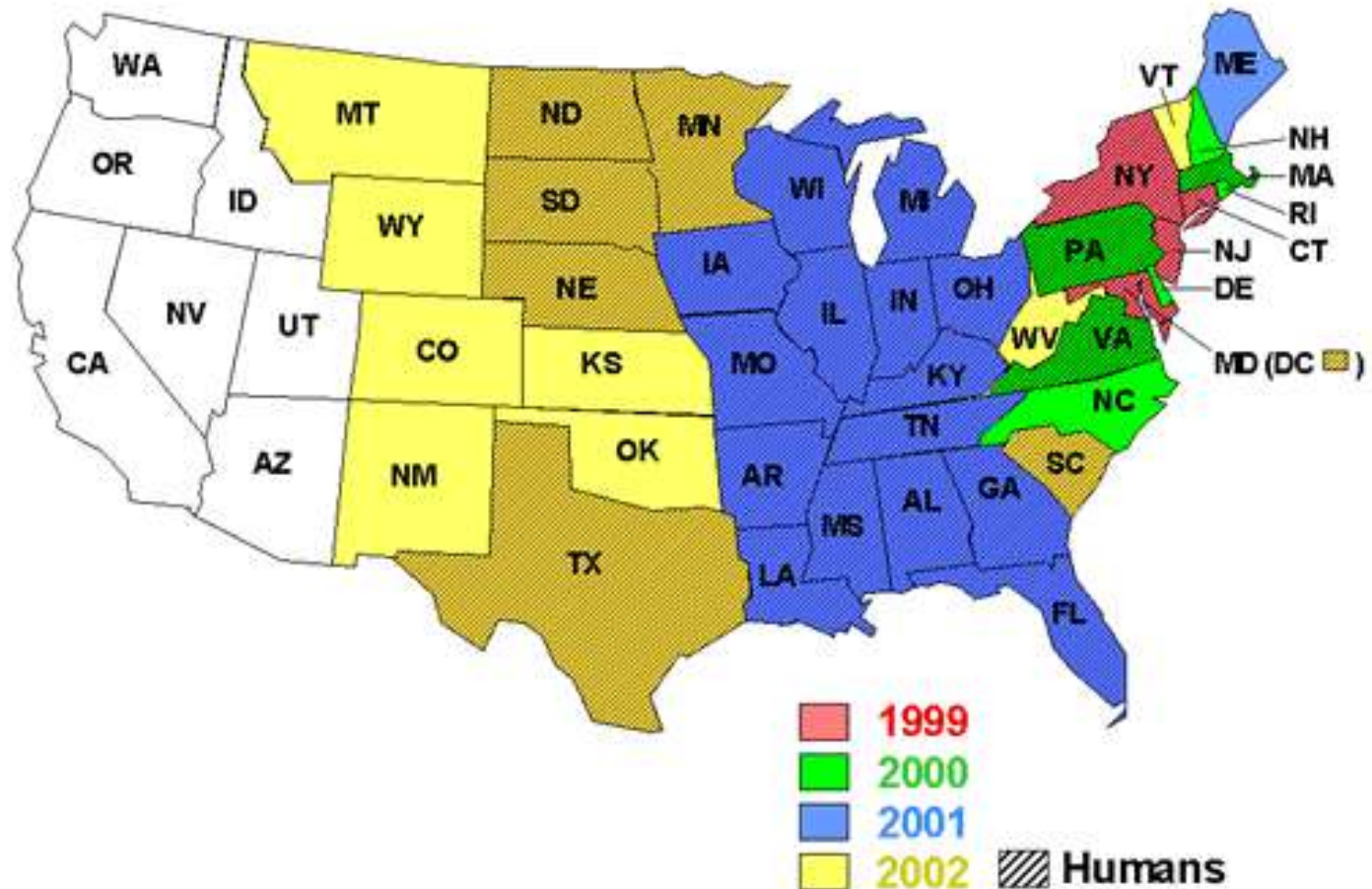
# Informational Graphics



- What should be included?
  - Title
  - Legend or key
  - Units or correct proportions
  - Source
- What's missing here?

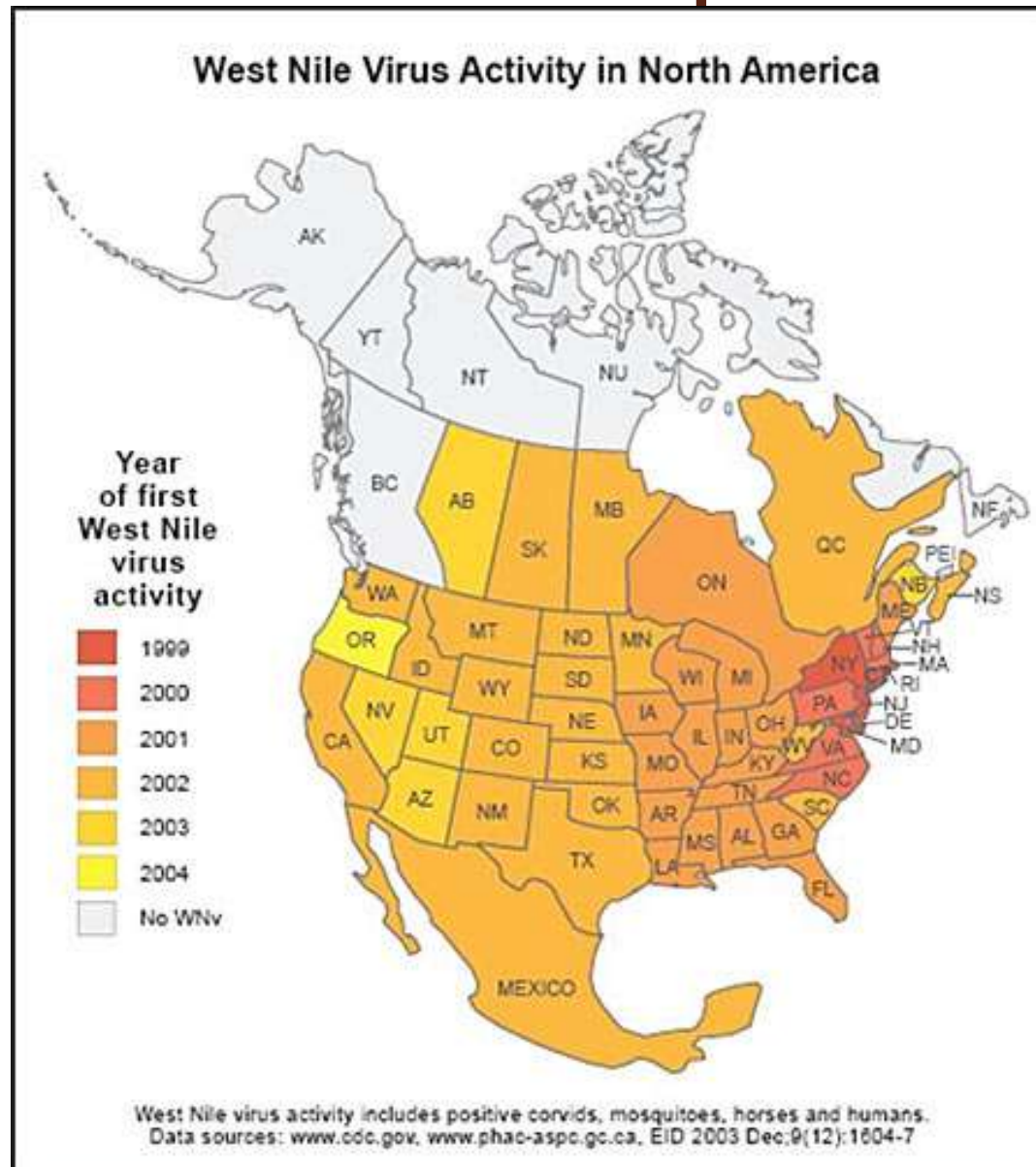
# Informational Graphics

## West Nile Virus in the United States, 1999 - 2002

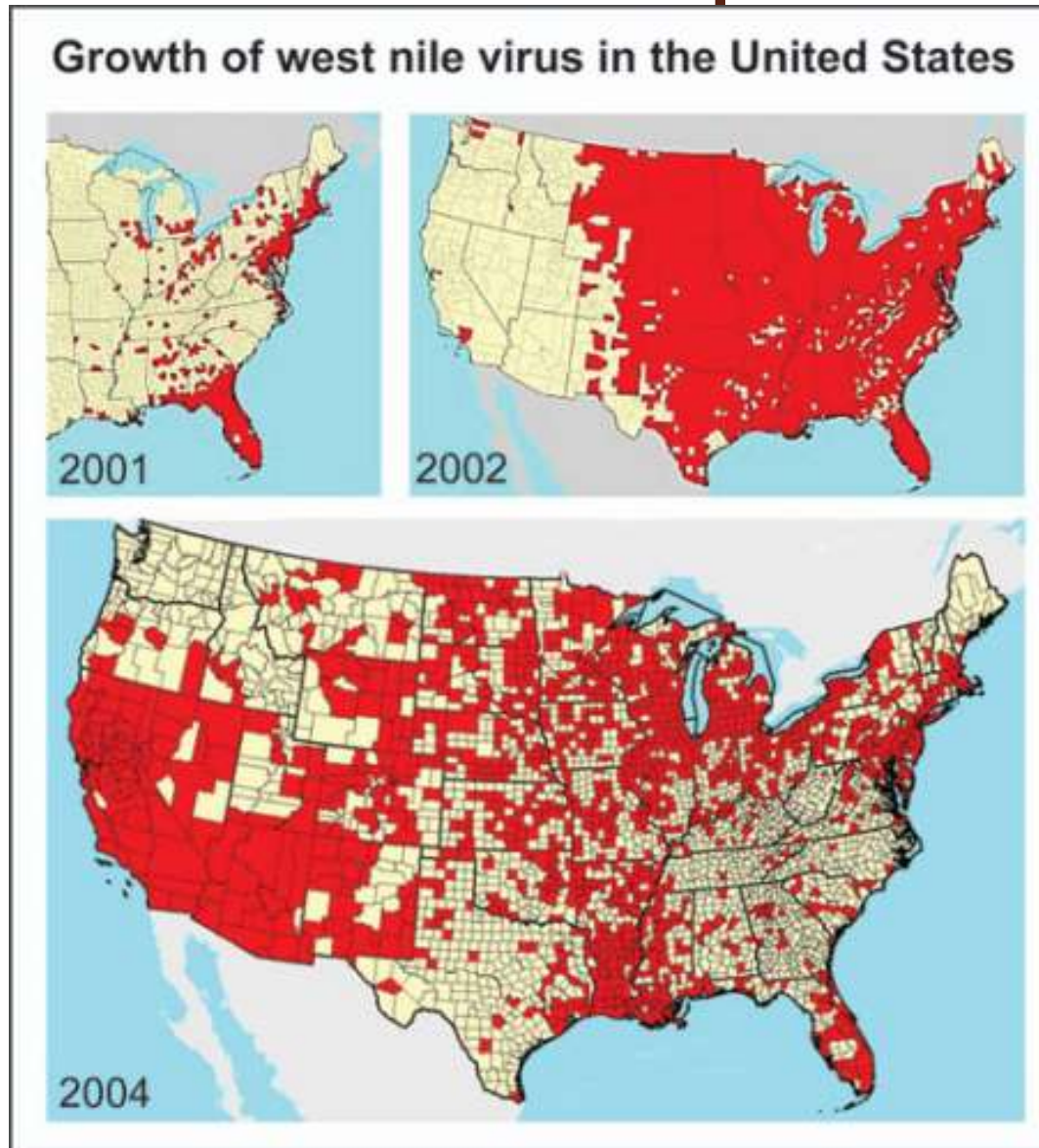




# Informational Graphics



# Informational Graphics





# Informational Graphics

- What did you notice about these maps?
- Were they the same?
- Did they show the same things?
- How else could the information be presented?

# Informational Graphics



99\_2013\_cumulativeHumanCases.pdf - Adobe Acrobat Pro

File Edit View Window Help

Create

1 / 1 130%

Tools Sign Comment

**West Nile virus disease cases reported to CDC by state, 1999-2013**

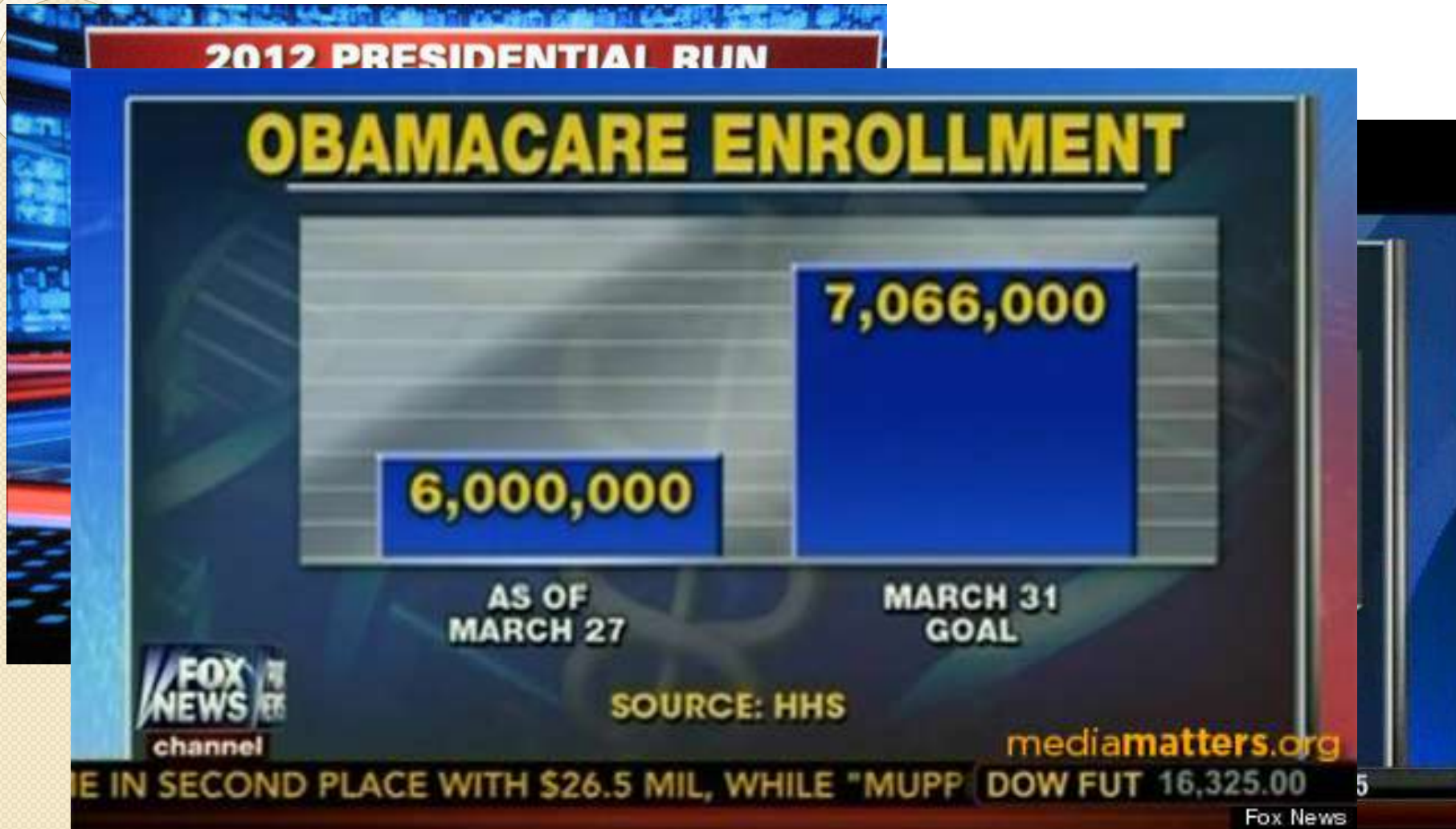
State	1999	2000	2001	2002	2003	2004	2005	2006	2007	2008	2009	2010	2011	2012	2013	Total
Alabama	0															
Alaska	0															
Arizona	0															
Arkansas	0															
California	0															
Colorado	0															
Connecticut	0															
Delaware	0															
Dist. of	0															
Florida	0	0	12	28	94	41	21	3	3	3	3	12	24	73	7	324
Georgia	0	0	6	44	50	21	20	8	50	8	4	13	22	99	10	355
Hawaii	0	0	0	0	0	0	0	0	0	0	0	0	0	0	0	0
Idaho	0	0	0	0	1	3	13	996	132	39	38	1	3	17	40	1,283
Illinois	0	0	0	884	54	60	252	215	101	20	5	61	34	290	117	2,093
Indiana	0	0	0	293	47	13	23	80	24	4	4	13	9	77	23	610
Iowa	0	0	0	54	147	23	37	37	30	6	5	9	9	31	44	432
Kansas	0	0	0	22	91	43	25	30	40	31	13	19	4	56	91	465
Kentucky	0	0	0	75	14	7	5	6	4	3	3	3	5	23	3	151
Louisiana	0	0	1	329	124	109	171	180	40	49	21	27	10	335	54	1,450

What can we do with this information?

4:42 PM 7/23/2014



# Errors in Graphics



# Let's Practice!

- Circle Graphs with Skittles!

