

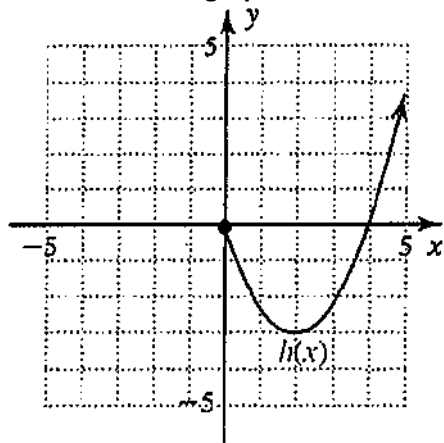
2.3 Re-Teach Worksheet

Name _____

Intermediate Algebra

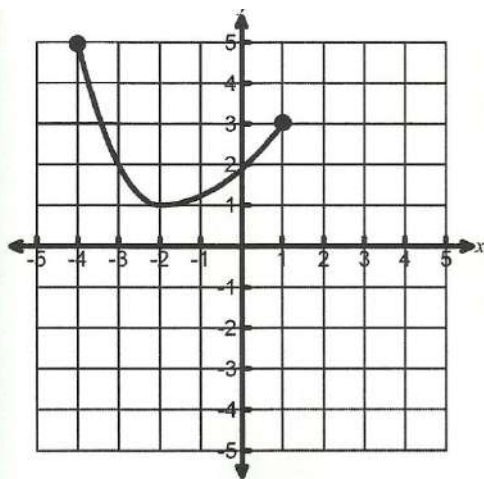
Learning Target. I can demonstrate understanding of the significant features of a graph or table and their relationship to real-world situations.

1. Use the graph to answer the following questions.



- y-intercept(s) _____
- x-intercept(s) _____
- Relative maximum _____
- Relative minimum _____
- Increasing Intervals *__label on graph__*
- Decreasing Intervals *__label on graph__*
- Domain _____
- Range _____

2.



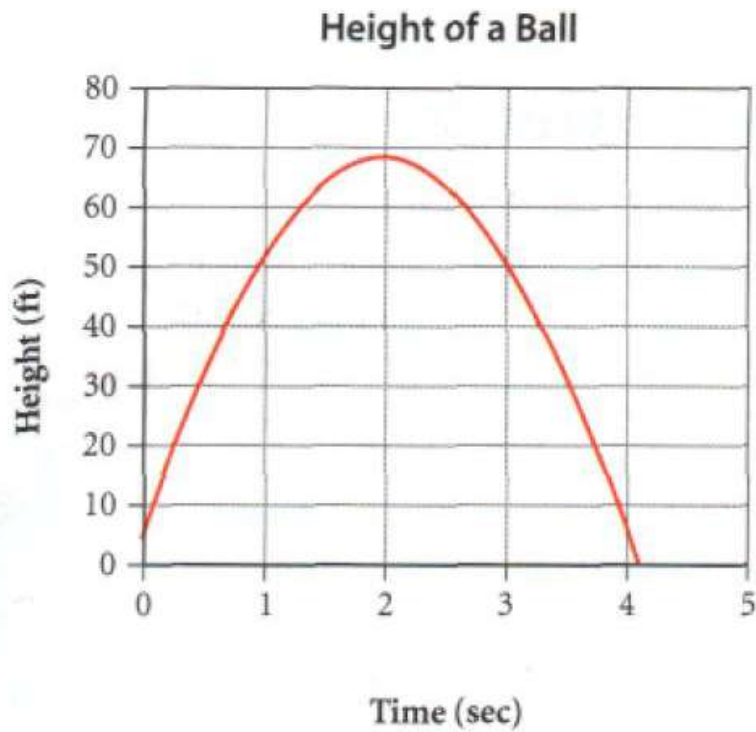
- Domain: _____
- Range: _____
- x-intercept(s): _____
- y-intercept: _____

2.3 Re-Teach Worksheet

Intermediate Algebra

Name _____

3. Use the graph to answer the following questions



- Did the ball start on the ground before being thrown? How can you tell?
- When was the ball at a height of 40ft? What was the height of the ball at 3 seconds?
- What was the maximum height of the ball and at what time did that occur?
- What does the point (4.1, 0) represent in this problem?
- Was the ball increasing or decreasing on the interval $0 < x < 2$?