



Proposition E 2018



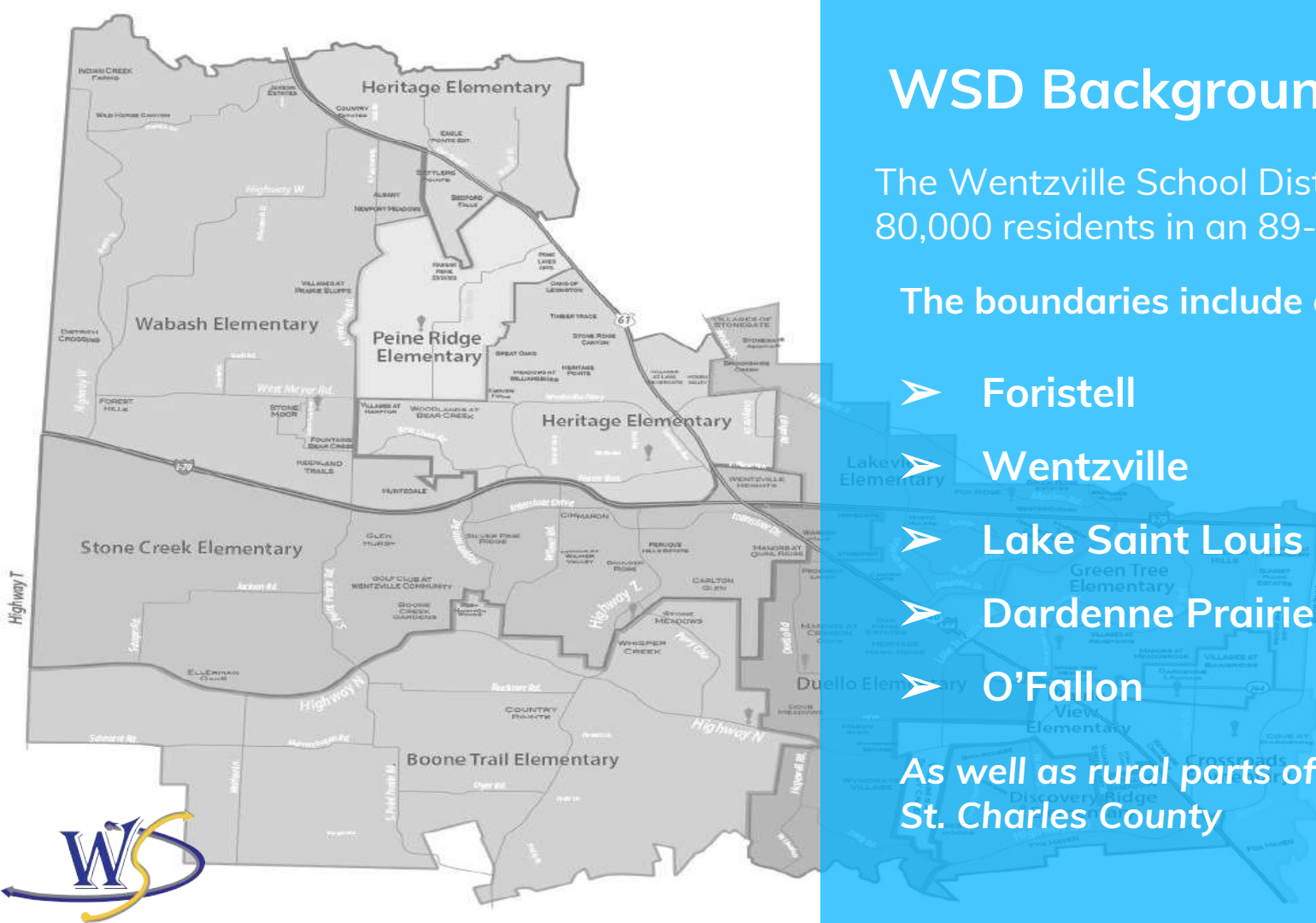
WSD Background

The Wentzville School District serves over 80,000 residents in an 89-square mile area

The boundaries include all or parts of:

- Foristell
- Wentzville
- Lake Saint Louis
- Dardenne Prairie
- O'Fallon

As well as rural parts of unincorporated St. Charles County





WSD Quality

- 2017 test scores place the WSD in the top 10% in the state for the 8th consecutive year;
- The WSD maintains the lowest expenditure per ADA (per pupil spending) in St. Charles County;
- The District scored 97.5% this year on the Missouri Department of Elementary and Secondary Education (DESE) Annual Performance Report - up from 97.1% last year and the highest the District has scored since the state started using the tool five years ago;
- Niche.com ranks the WSD 20th in the state and in the top 10% of school districts in the nation.



Outstanding Educators



Julia Luetkenhaus and Stacy Wade from Frontier Middle School have both been named Finalists for the Presidential Award for Excellence in Mathematics and Science Teaching (PAEMST). They are the fifth and sixth WSD teachers to be nominated for the prestigious award and we've had two recipients of the Presidential Award since 2012 (Laura Parn & Katherine Shack).





120
new teachers

2,400
applicants



WELL HELLO!

**OF COURSE THEY WANT
TO WORK IN THE WSD!**

imgflip.com



Ignite!

A grayscale background image showing students in a laboratory setting. Two students in the foreground are wearing safety goggles and lab coats, working with equipment. Other students are visible in the background, also in lab coats.

Expanding opportunities for students

Started this year...

Healthcare Academy & Start Up/Business Solutions

Provides students with valuable off-campus opportunities to work with mentors, engage in real-world problem solving, and make professional connections in the workplace in our community.



In an effort to broaden and expand CAPS (Center for Advanced Professional Studies) opportunities for our students, we have partnered with the other St. Charles County school districts to form the...

St. Charles County CAPS Consortium



St. Charles County CAPS



Next year, students will have the opportunity to participate in

**Healthcare Academy, Global Business/Entrepreneurship,
& Technology Solutions (IT and Digital Media)**

...as part of the county-wide initiative.



EARLY COLLEGE Program

Starting next school year, juniors and seniors will also have the opportunity to begin work toward, or fully complete, an associates degree through St. Charles Community College while earning the necessary high school credits in order to graduate.

#WSDlearns



New Marketing Director

This is a new position designed to open up advertising opportunities in the District to support our athletic and co-curricular programs.



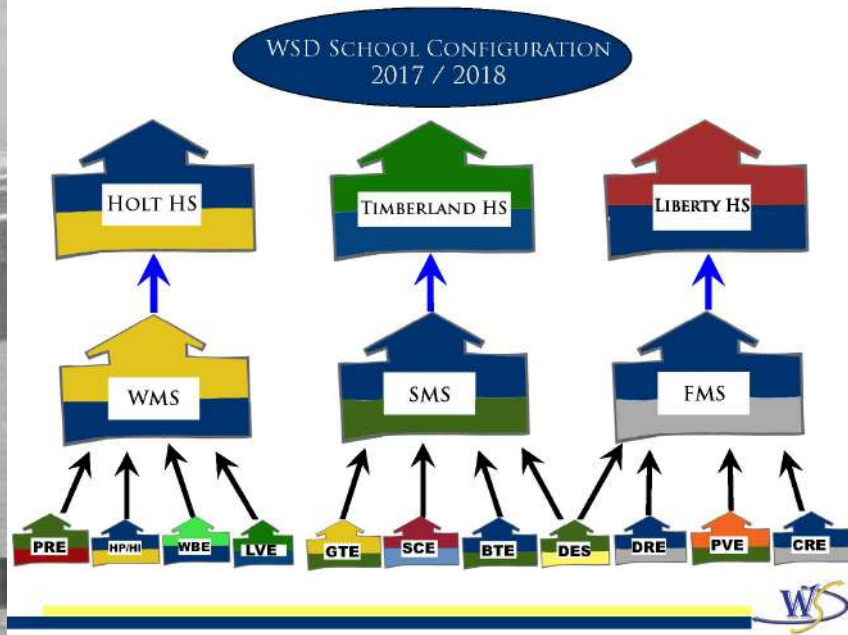
#WSDcommunity

#WSDgrows

16,382



#WSDgrows



Currently 18 schools
Since 2000, we have built
11 new schools!





*The WSD continues to be the FASTEST GROWING
SCHOOL DISTRICT in the State of Missouri.*

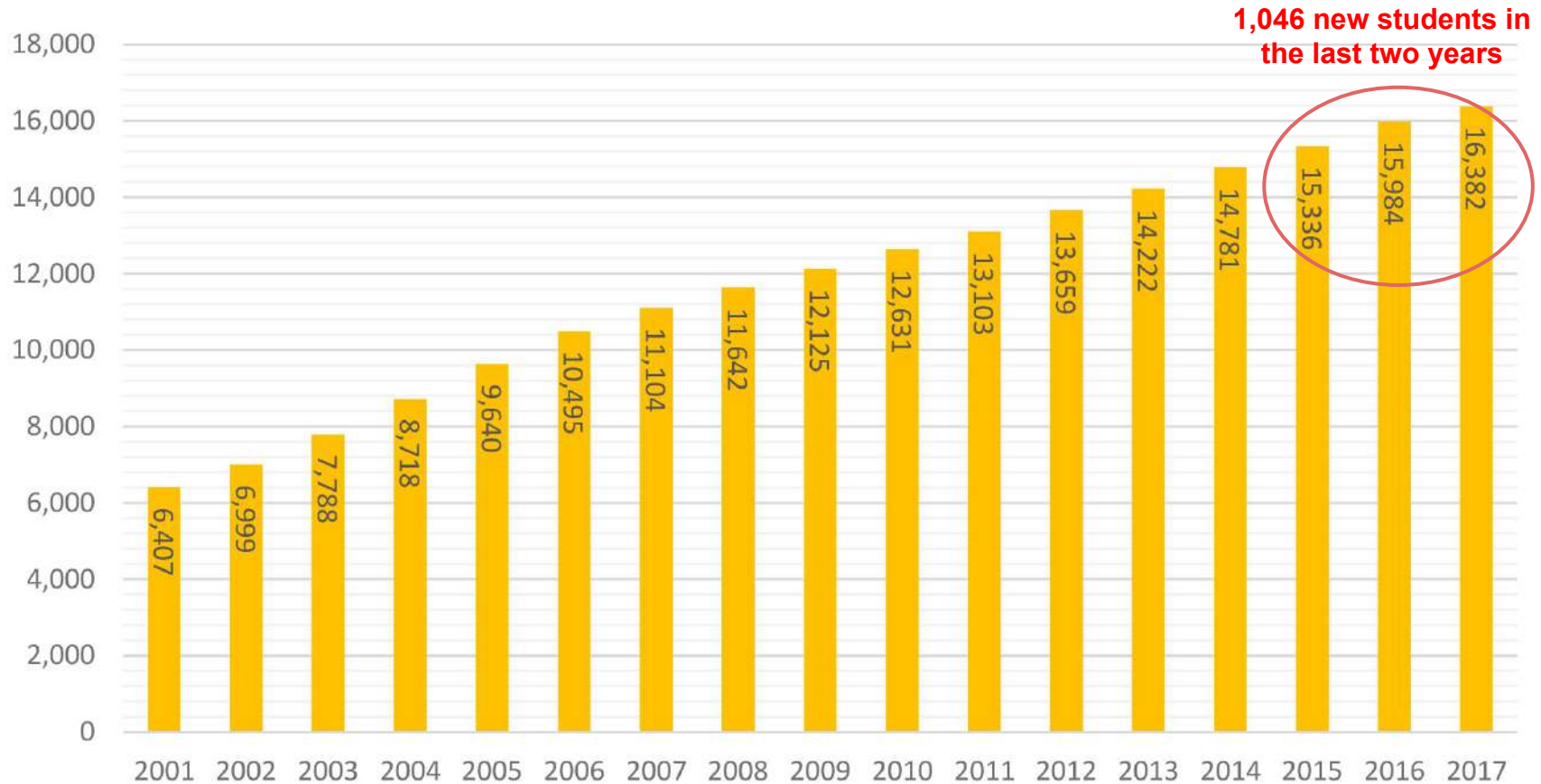




*Enrollment growth and construction have defined our
District in the 21st Century.*



September Enrollment





We know about our growth, but will it continue? To help us gauge that, we commissioned an independent demographic study that was released in February of 2017....





“Birth data and demographic vendor data indicate that the number of pre-kindergarten children should continue to increase in the district for at least the next ten years.”

~2017 Demographic Study, Business Information Services, LLC





“Available housing, the district’s favorable test scores and reputation and much available property for development will encourage the district’s enrollment to continue to grow at a strong pace.”

~2017 Demographic Study, Business Information Services, LLC





“Three statistical models project that Wentzville’s district enrollment will be between 21,581 and 23,180 by 2026-27. This is assuming an annual enrollment growth of between 3.5% and 4.5%. For the last 10 years, the growth rate has been 5.5%.”

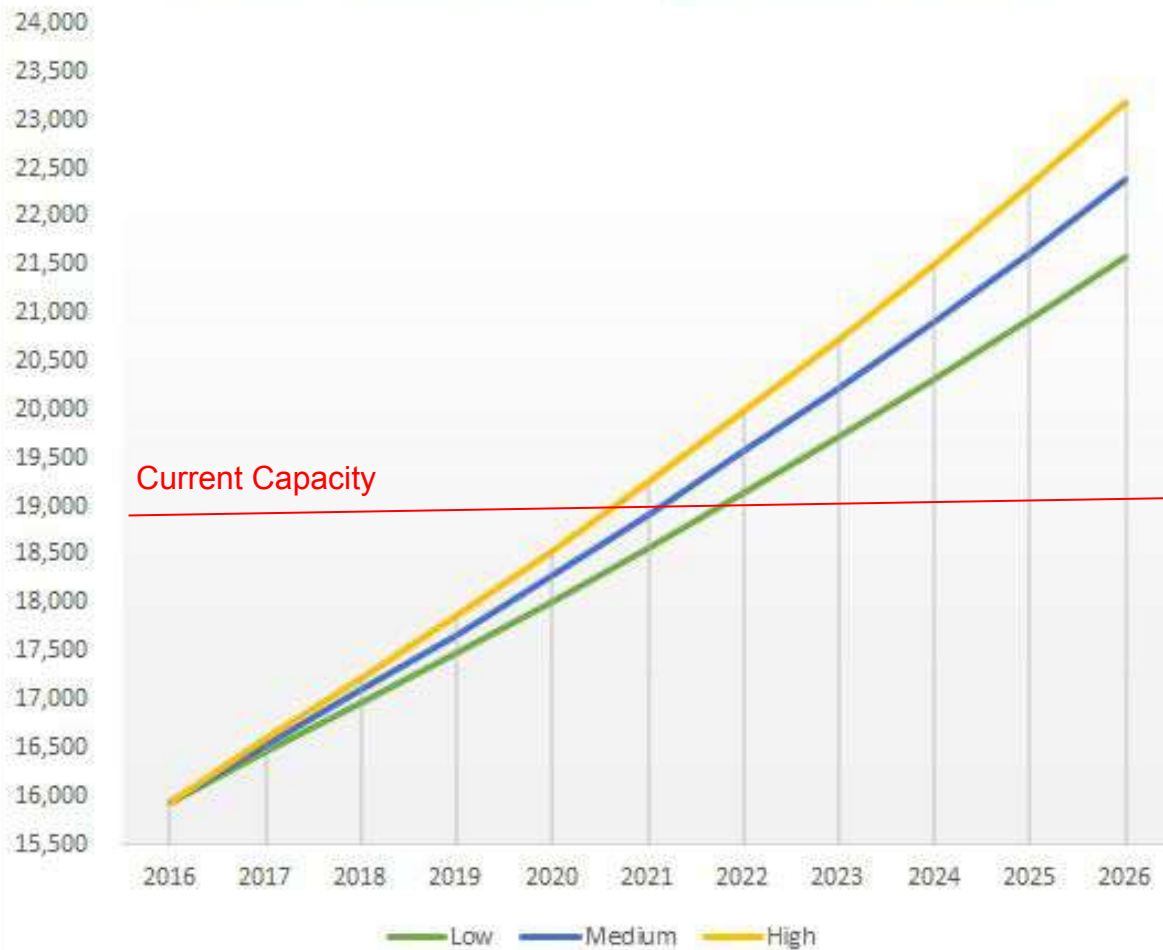
~2017 Demographic Study, Business Information Services, LLC



*That means the Wentzville School District could add between
5,500 to 6,700 new students over the next decade
which would make the WSD one of the five largest school districts in the state.*

~2017 Demographic Study, Business Information Services, LLC

District Enrollment Projections to 2026



New Subdivisions Map

Map No. 17
June 2014

Map #	Subdivision	*Recorded Total Lots/Units	*Available Lots Recorded	*Preliminary Plat Total Lots	*% of Lots Vacant
1	Albany	99	51	99	52%
2	Barclay Place	33	33	33	100%
3	Bear Creek	446	6	446	1%
4	Boulder Ridge	91	24	113	26%
5	Brook Ridge Estates	0	0	105	
6	Brookshire Creek West	117	21	117	18%
7	Brookstone	0	0	285	
8	Carlton Glen Estates	501	233	501	47%
9	Cimarron	196	79	309	40%
10	Crystal Creek	129	23	255	18%
11	Discovery Village	21	13	28	62%
12	East Hampton Woods	57	29	57	51%
13	Fieldstone Estates	29	9	29	31%
14	Fox Ridge	311	0	450	0%
15	Glenhurst	329	81	329	25%
16	Golf Club of Wentzville (The)	557	101	645	18%
17	Hampton Grove	0	0	52	
18	Hannah Ridge Estates	103	80	103	78%
19	Heritage Pointe	356	100	356	28%
20	Huntsdale	215	37	215	17%
21	Ivybrook Meadows	32	13	32	41%
22	Keeneland Trails	196	67	196	34%
23	Liberty Grove	43	20	43	47%
24	Manors at Quail Ridge (The)	100	9	100	9%
25	Manors at Wilmer Valley	104	60	264	58%
26	Newport Meadow	241	69	241	28%
27	Peine Lake Estates	82	7	82	9%
28	Peine Woods	45	23	45	51%
29	Peruque Hills Estates	120	86	302	72%
30	Renaissance Crossing	55	40	55	73%
31	Rolwes-Hynes Tract	0	0	443	
32	Scott's Villa's	15	11	15	73%
33	Shadow Ridge Estates	113	8	113	7%
34	Shenwood Oaks	39	29	39	74%
35	Stargate Ridge	85	28	85	61%
36	Stonemoor	216	136	206	63%
37	The Cedars	0	0	15	
38	The Cedars	113	51	241	45%
39	The Cedars	15	15	85	17%
40	The Oaks at Stone Ridge	15	15	142	56%
41	Villages at Hampton Grove	52	10	83	19%
42	Villages at Huntleigh Ridge	208	165	593	79%
43	Villages at Lake Silvercreek	148	104	383	70%
44	Villages at Prairie Bluffs (The)	126	13	163	10%
45	Villages at Stonegate	350	12	358	3%
46	Villas at Stonemoor	52	36	240	69%
47	Wentzville Senior Housing	0	0	240	
48	Westhaven	0	0	768	
49	Westwind Park	148	6	155	4%
50	Woodlands at Bear Creek	217	42	239	19%
51	Wyncrest	111	79	111	71%
52		7,254	2,215	11,256	31%

* See Back Side For Info

From 2011 to 2013 there were THREE new subdivisions platted within the boundaries of the Wentzville School District





Since 2013, there have been
80 new subdivisions platted
within the boundaries of the WSD!



K-6 Plan for Growth

Following the passing of Prop E in 2015, the Board of Education devised the K-6 Plan for Growth to relieve crowding at the middle schools without having to return to the voters for a tax increase. After two years of planning, an additional elementary school, a change in school boundaries, and thanks to flexible and resilient staff and families, we successfully transitioned to K-6 elementary schools.



The shift to K-6 elementary buildings also provided the District time to pay down debt so that Proposition E 2018 could be financed through a...

NO-TAX INCREASE BOND ISSUE

 **Proposition E** xcellence in
education for
everyone!
*Cast YOUR vote on **April 3rd***

NO-TAX INCREASE BOND ISSUE

- New comprehensive high school
 - New elementary school
- Addition at Peine Ridge Elementary
- Addition at Barfield Early Childhood
 - Addition at Pearce Hall
- New gym at Holt High School

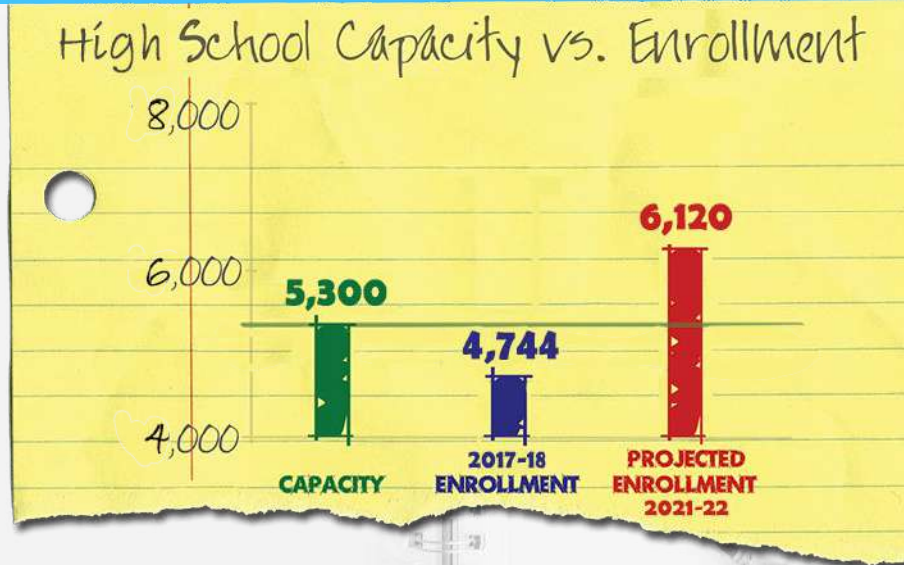
Proposition E excellence in
education for
everyone!
Cast YOUR vote on **April 3rd**

NO-TAX INCREASE BOND ISSUE

How can we do this?

- Higher assessed valuations
 - Broader tax base
 - Refinancing of Bonds
 - Fund Transfers
- Overall fiscal responsibility of the WSD

Based on the demographic study, Holt and Timberland will be over capacity by 2019 and Liberty will be over capacity by 2021.



4,744
2017-18

5,019
2018-19

5,351
2019-20

5,771
2020-21

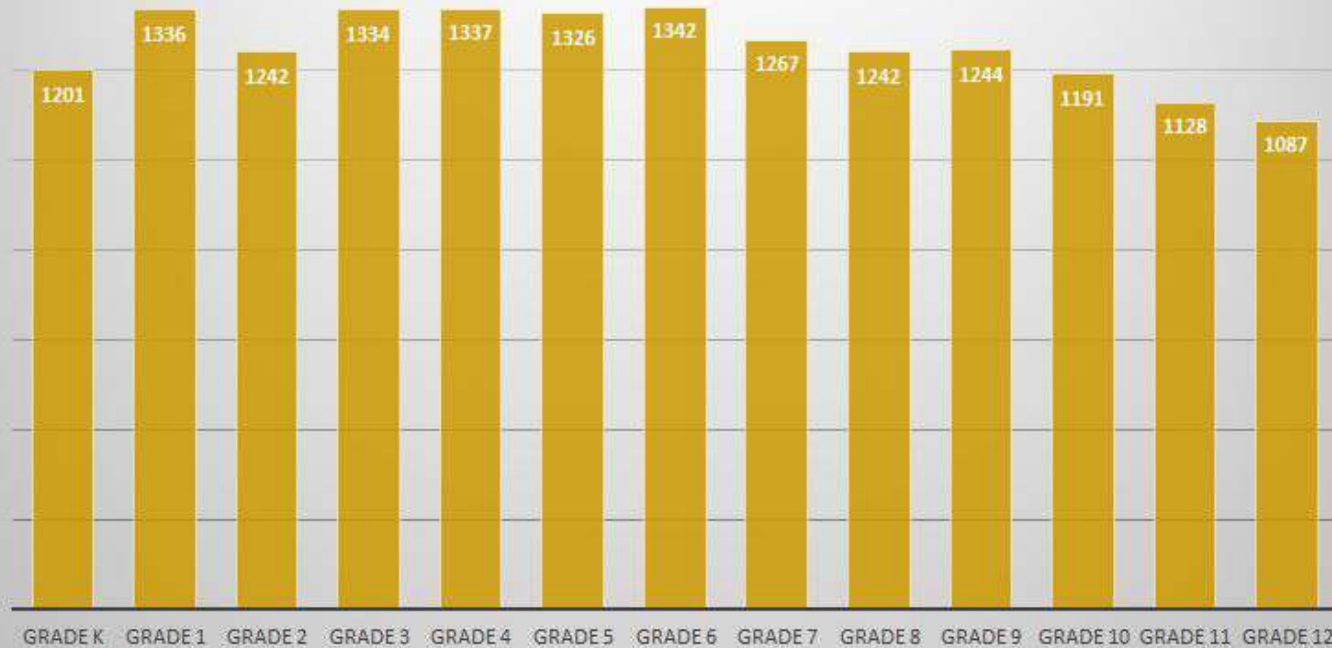
6,120
2021-22

It takes three years to build a high school.

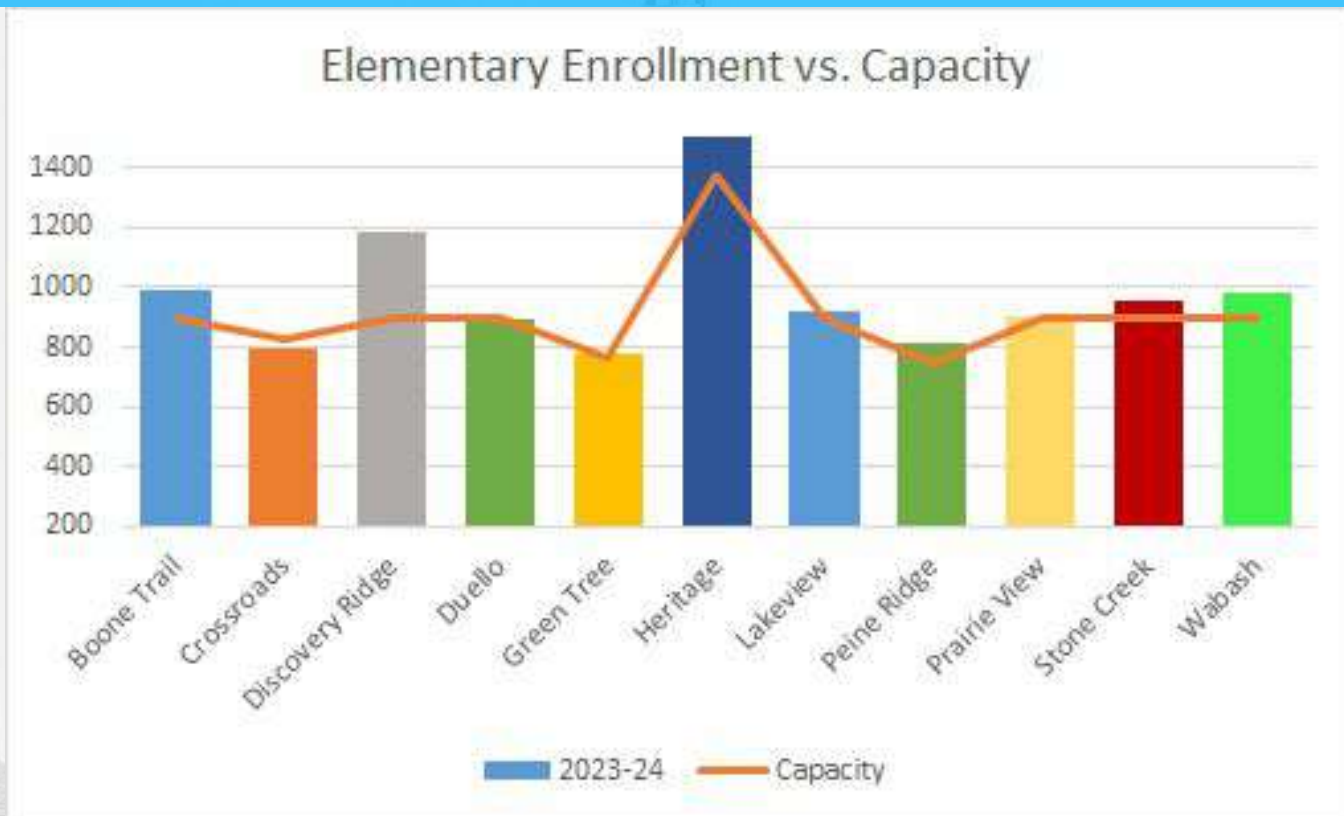


The need is not only based on projected growth, but the students that are already here in our lower grades:

WSD Current Enrollment by Grade - 2018



WSD elementary schools will be over capacity by 2023-24. However we are already exceeding capacity at Boone Trail and Discovery Ridge and by 2023, at least five schools will be over capacity based on the projections.



Barfield Early Childhood Special Education Center



Barfield Early Childhood Special Education Center provides services for students with special needs as well as typically developing students. Each year, there is a waiting list for non-disabled students that are turned away due to a lack of space.

Recent recipient of the Phoenix Fund Grant from the Blue Mountain Foundation in Washington for efforts to make a real and lasting difference in the lives of students by becoming a trauma-informed school.

Pearce Hall



- High School Alternative Program
- Missouri Options
- Anabranch
- Middle School Intervention Program
- Substance Abuse Prevention Program





Peine Ridge Elementary

- Peine Ridge is the smallest remaining elementary school in the WSD with a capacity of 750 students;
- Like other District elementary schools, it was designed and built with the intent to easily add classrooms.

Holt Gym

- Multi Purpose Room is not up to par with other high school auxiliary gyms
- Lack of air conditioning makes it virtually unusable 3-4 months out of the year
- Tile flooring, less square footage and no bleachers means games cannot be held in the space
- Space is not suitable for cheer or winter guard practice due to low ceilings which presents additional scheduling challenges



Holt Gym



Liberty
2nd Gym
9,800
Square Ft.



Timberland
2nd Gym
8,900
Square Ft.



Holt
Multi-Purpose Room
5,400
Square Ft.





What's NOT on the ballot?

- Facility improvements (HVAC) at Heritage, Wentzville Middle, Holt and South Middle schools

We are moving ahead with plans to utilize Guaranteed Performance Contracts to make improvements at our older buildings. These plans have been in the works for some time and will proceed regardless of the outcome of the April election.

**There is a direct correlation between the
quality of schools and home values**

**Strong
Community**

**Quality
Schools**

**Higher
Home
Values**

There is a direct correlation between the
quality of schools and home values



WSD Campaign History

- April 1989 - \$4.5 Million Bond Issue
- April 1992 - \$.55 Tax Levy
- April 1993 - \$7.5 Million Bond Issue
- April 1994 - \$.24 Rollback Waiver
- April 1996 - \$11 Million Bond Issue
- April 1997 - Permanent Waiver of Rollback
- April 1998 - \$16 Million Bond Issue
- April 1998 - \$.24 Tax Levy
- August 1999 - \$.55 Tax Levy (FAILED)
- November 1999 - \$.55 Tax Levy (FAILED)
- August 2000 - \$26 Million Bond Issue
- February 2002 - \$.39 Tax Levy (FAILED)
- April 2002 - \$8 Million Bond Issue

- April 2003 - \$23 Million Bond Issue
- April 2004 - \$25 Million Bond Issue
- April 2004 - \$.29 Tax Levy (FAILED)
- August 2004 - \$.39 Tax Levy
- April 2005 - \$25 Million Bond Issue
- April 2006 - \$24 Million Bond Issue
- August 2006 - \$.25 Tax Levy (FAILED)
- April 2007 - \$25 Million Bond Issue (FAILED)
- November 2008 - \$52.6 Million Bond Issue
- November 2010 - \$.30 Tax Levy (FAILED)
- April 2011 - \$.30 Tax Levy
- November 2014 - \$40 M Bond Issue/Tax Levy (FAILED)
- April 2015 - \$.25 Tax Levy

26 ballot initiatives in the last 30 years

April Voter Data

2017

11%

2016

15%

2015

16%

***Percent of registered voters in the WSD who
cast a ballot in the April municipal election
the last three years...***

Cast your **VOTE** on **April 3rd!**

- **Everyone is busy**
- **Every vote counts**
- **Make sure your voice is heard**
- **The students are already here and by all indications they will keep coming**
- **Great things are happening in the WSD; let's keep this highly-rated district moving forward**
- **Let's ensure EVERY student has the space to learn and has an opportunity to reach their full potential**



Thanks!

Any questions?

Additional information can be found on
the WSD website:

www.wentzville.k12.mo.us

Wentzville R-IV
SCHOOL DISTRICT

 **Proposition E** xcellence in
education for
everyone!
Cast YOUR vote on **April 3rd**