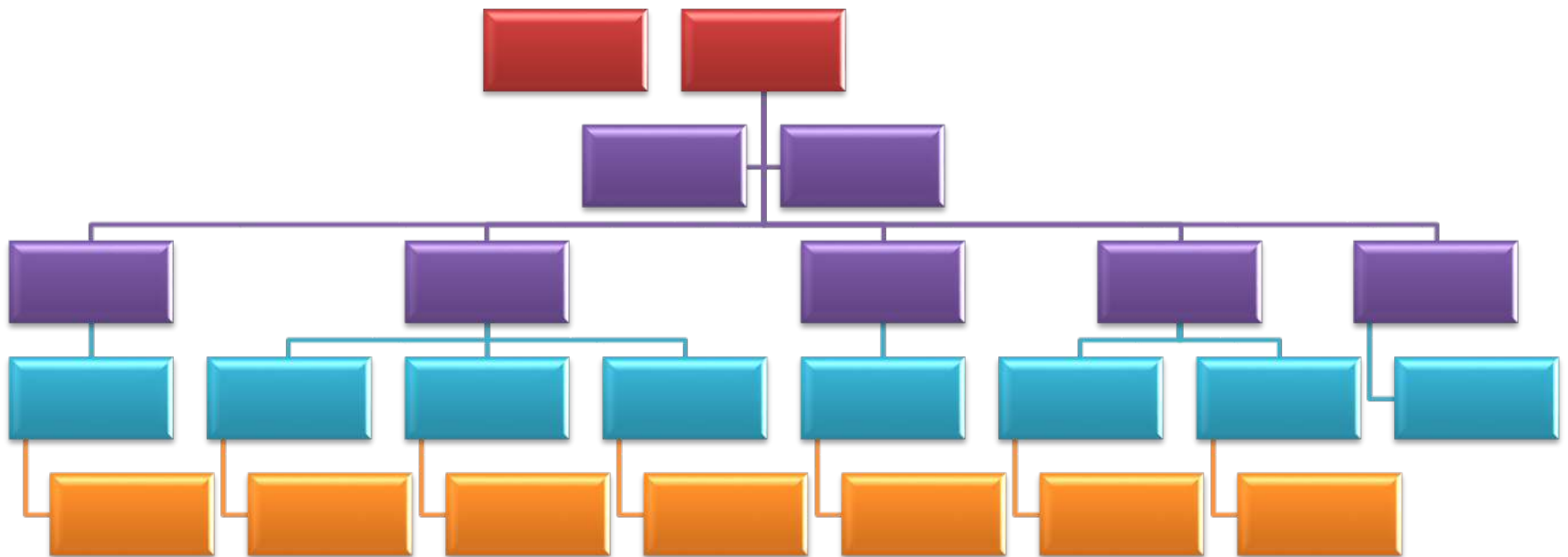


Production Staff

Theatre Arts I -T

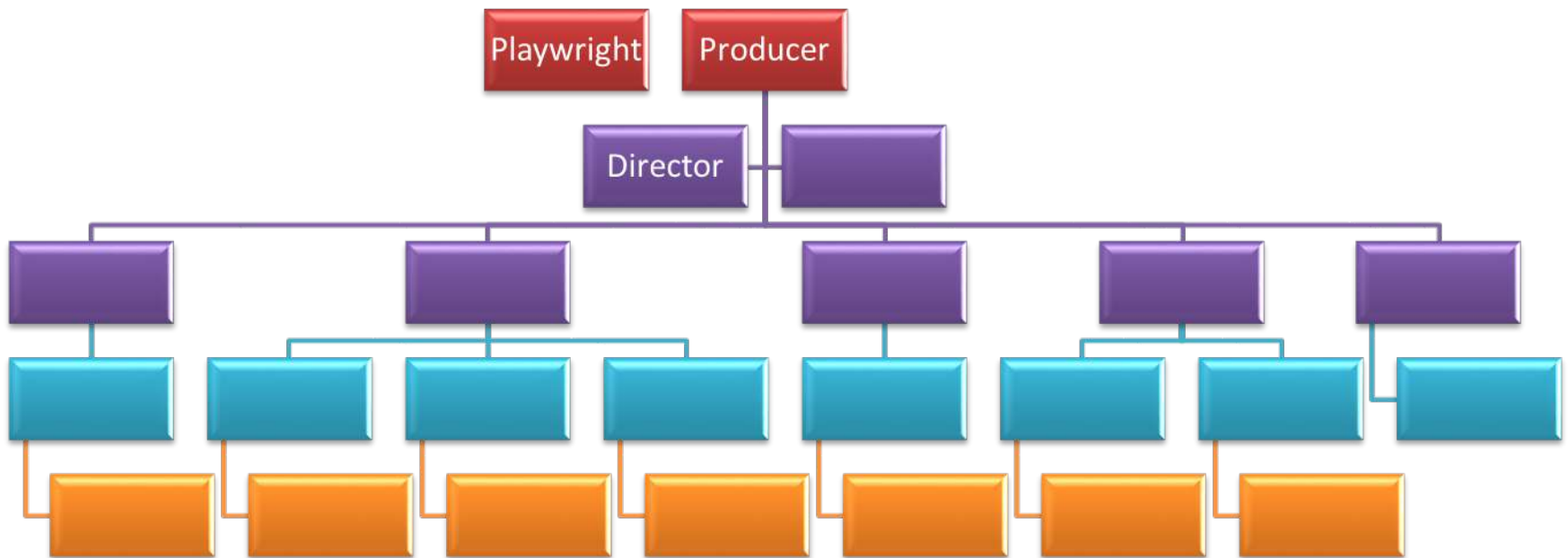
Production Staff Hierarchy



Production Staff Definitions

- **Playwright** - Person who develops and writes the script.
- **Producer**- Person who selects the script, secures financial backing, leases the theater, & hires all production personnel; the ultimate authority in the organizational structure of a theatrical production.
- **Director**- the artistic manager and inspirational leader of the production team; coordinates the work of actors, designers, and crews so that the production accurately expresses the production concept.
- **Production Concept**- the creative interpretation of the script, which will unify the artistic vision of

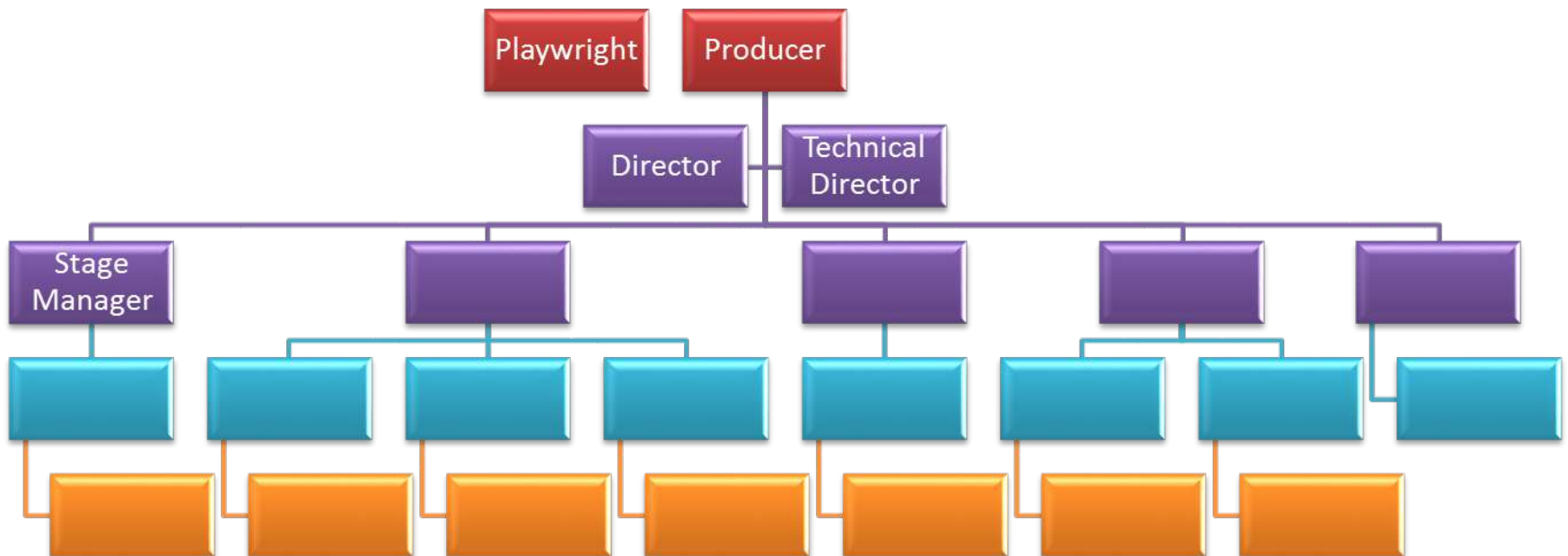
Production Staff Hierarchy



Production Staff Definitions

- **Stage Manager**- Person who assists the director during rehearsals and manages all backstage activity once the play has opened; must be a member of AEA in professional companies.
- **Actors' Equity Association (AEA)**- the labor union governing most professional stage actors and stage managers.
- **Prompt Book**- a copy of the script with details about each actor's blocking as well as the location of all set, prop, light, and sound cues.
- **Technical Director**- Person responsible for supervising all crews.

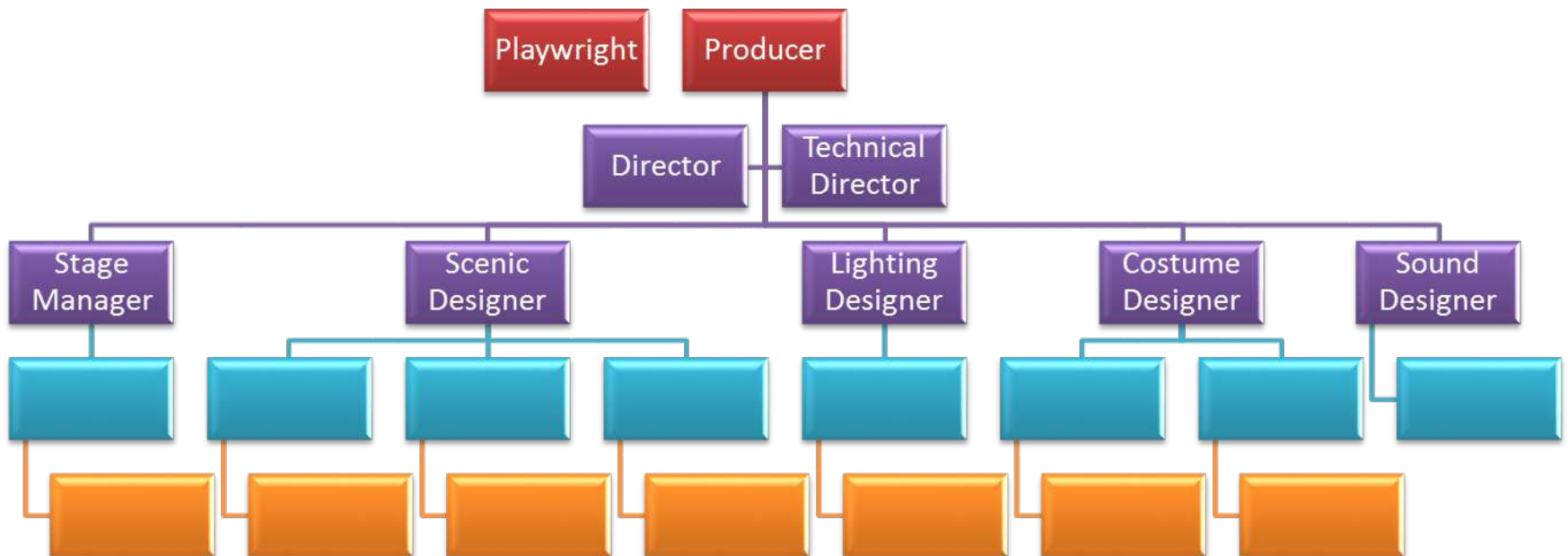
Production Staff Hierarchy



Production Staff Definitions

- **Scenic Designer**- Person responsible for the design and function of the scenery and properties.
- **Lighting Designer**- Person responsible for the design, installation, and operation of the lighting and special electrical effects used during the production.
- **Costume Designer**- Person responsible for the design, visual appearance, and function of the costumes, accessories, & make-up.
- **Sound Designer**- Person responsible for the design, recording, and playback of all music and sound effects used in a production, including live re-enforcement.

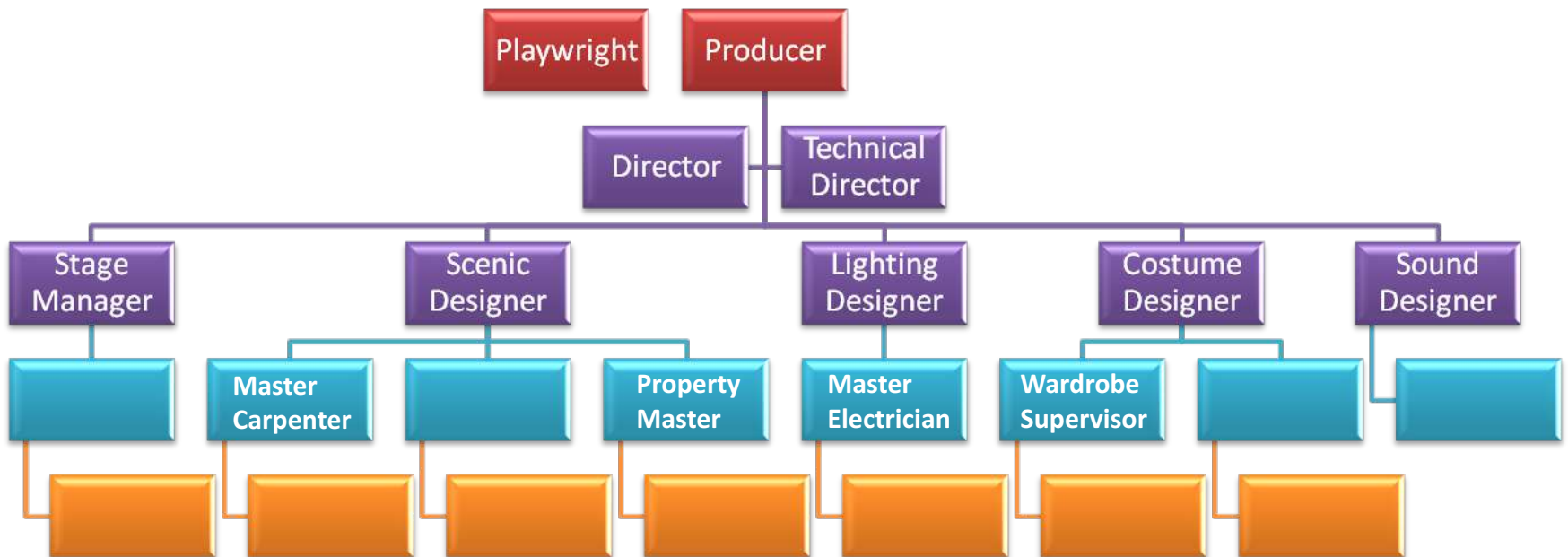
Production Staff Hierarchy



Production Staff Definitions

- **Master Carpenter** (Scene Shop Foreman)- Person responsible for supervising the construction, mounting, rigging, and shifting of the scenery.
- **Property Master**- Person responsible for the design, construction, and finishing of the various decorative and functional props used in a production.
- **Master Electrician**- Person responsible for the acquisition, installation, and maintenance of all lighting equipment and the supervision of the crews who hang, focus, and run the lighting equipment.
- **Wardrobe Supervisor**- Person responsible for the construction of the costumes and supervision of the costume shop.

Production Staff Hierarchy



Production Staff Definitions

- **Assistant Stage Manager-** Responsible for relaying information from the stage manager to company members. Works as the stage manager when the stage manager is not present.

Production Staff Definitions

- **Assistant Stage Manager-** Responsible for relaying information from the stage manager to company members. Works as the stage manager when the stage manager is not present.
- **Paint Charge-** Assists the scenic designer by conceiving the paint technique to achieve the over all look, organizing and overseeing the painting, and treating the scenery and props to achieve the proper end result.

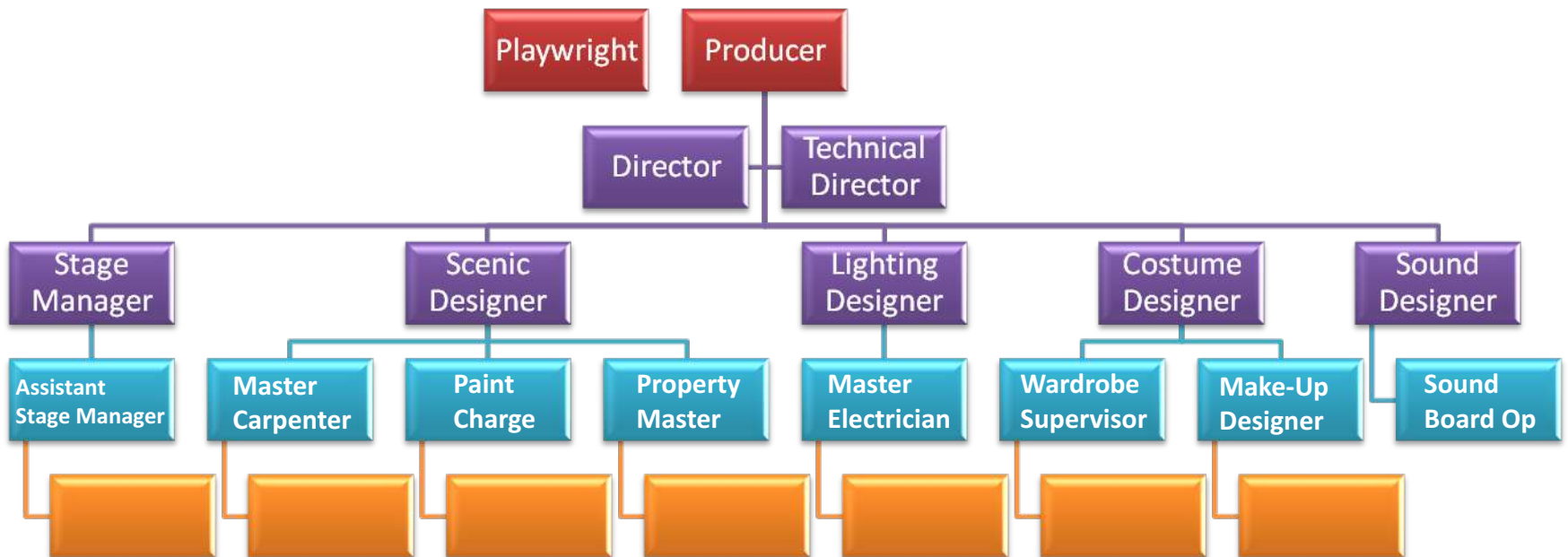
Production Staff Definitions

- **Assistant Stage Manager-** Responsible for relaying information from the stage manager to company members. Works as the stage manager when the stage manager is not present.
- **Paint Charge-** Assists the scenic designer by conceiving the paint technique to achieve the over all look, organizing and overseeing the painting, and treating the scenery and props to achieve the proper end result.
- **Make-up Designer-** Responsible for creating all general and special effects make-up (including any prosthetics) for a production.

Production Staff Definitions

- **Assistant Stage Manager**- Responsible for relaying information from the stage manager to company members. Works as the stage manager when the stage manager is not present.
- **Paint Charge**- Assists the scenic designer by conceiving the paint technique to achieve the over all look, organizing and overseeing the painting, and treating the scenery and props to achieve the proper end result.
- **Make-up Designer**- Responsible for creating all general and special effects make-up (including any prosthetics) for a production.
- **Sound Board Operator** -Responsible for operating the sound board during all performances. This includes all microphones, CD players, computers etc.

Production Staff Hierarchy



Production Staff Definitions

- **Production Assistant-** Responsible for the administration, organization and secretarial work involved in producing a play. Duties can include assisting actors and the crew, issuing scripts, dealing with travel, sorting out enquiries and other paperwork.

Production Staff Definitions

- **Production Assistant-** Responsible for the administration, organization and secretarial work involved in producing a play. Duties can include assisting actors and the crew, issuing scripts, dealing with travel, sorting out enquiries and other paperwork.
- **Carpenter-** A stagehand who builds sets and stage elements.

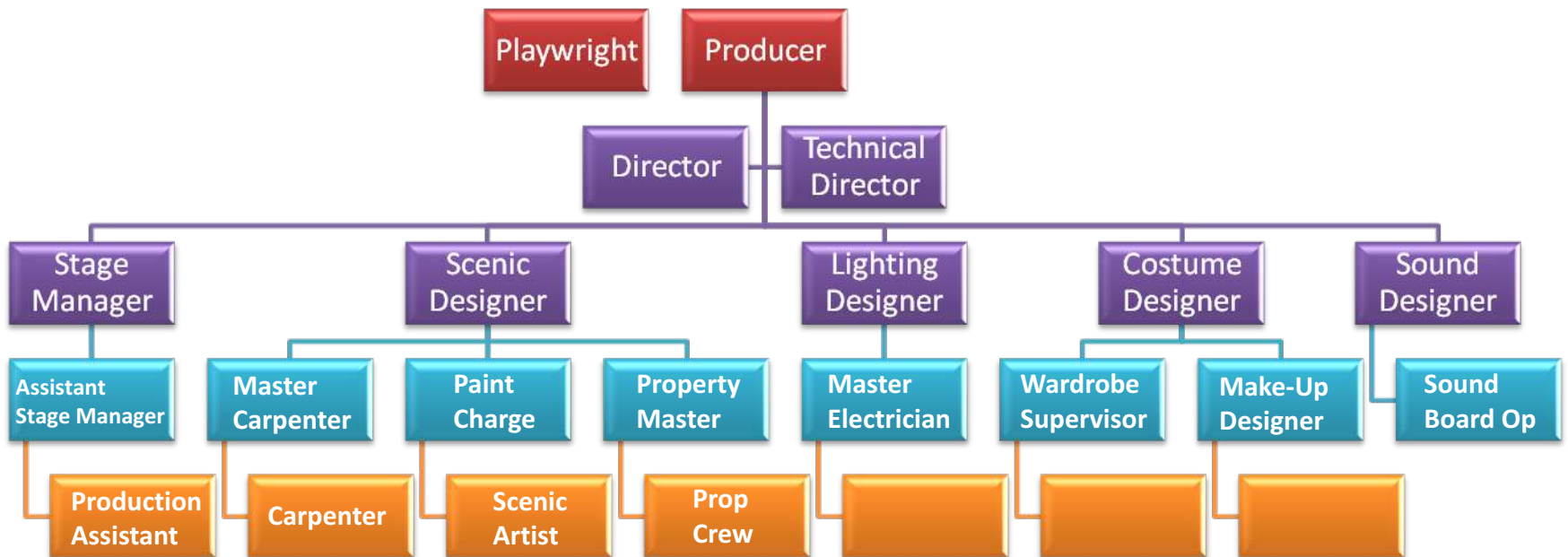
Production Staff Definitions

- **Production Assistant-** Responsible for the administration, organization and secretarial work involved in producing a play. Duties can include assisting actors and the crew, issuing scripts, dealing with travel, sorting out enquiries and other paperwork.
- **Carpenter-** A stagehand who builds sets and stage elements.
- **Scenic Artist-** Paints all sets, murals and any other elements on all sets.

Production Staff Definitions

- **Production Assistant-** Responsible for the administration, organization and secretarial work involved in producing a play. Duties can include assisting actors and the crew, issuing scripts, dealing with travel, sorting out enquiries and other paperwork.
- **Carpenter-** A stagehand who builds sets and stage elements.
- **Scenic Artist-** Paints all sets, murals and any other elements on all sets.
- **Prop Crew-** Organizes and moves all the props. Also maintains prop tables backstage for all hand props.

Production Staff Hierarchy



Production Staff Definitions

- **Electrician-** Responsible for all non-design aspects of the lighting in a theatrical production. They may also be responsible for special effects (such as fog) and powering other electrical items (such as motors) used in the production.

Production Staff Definitions

- **Electrician-** Responsible for all non-design aspects of the lighting in a theatrical production. They may also be responsible for special effects (such as fog) and powering other electrical items (such as motors) used in the production.
- **Stitcher-** Responsible for building all costumes.

Production Staff Definitions

- **Electrician-** Responsible for all non-design aspects of the lighting in a theatrical production. They may also be responsible for special effects (such as fog) and powering other electrical items (such as motors) used in the production.
- **Stitcher-** Responsible for building all costumes.
- **Make-up Artist-** Applies all make-up elements to performers.

Production Staff Hierarchy

