

Portraits

...

Active choices make all the difference

Making intentional choices about the following changes the mood of the photograph

Lighting

Distance

Clothing

Angle

Hair

Movement

Location

Depth of Field

Body Language

Facial Expression

Props

Shadows

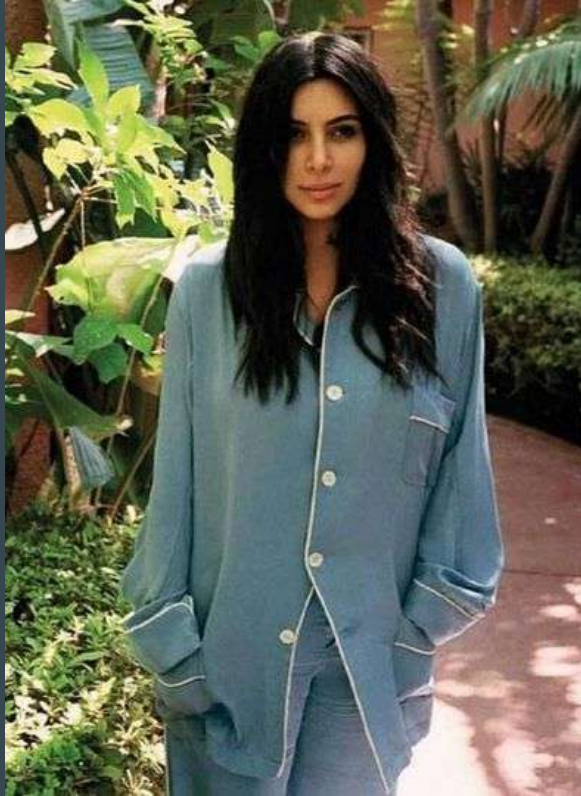










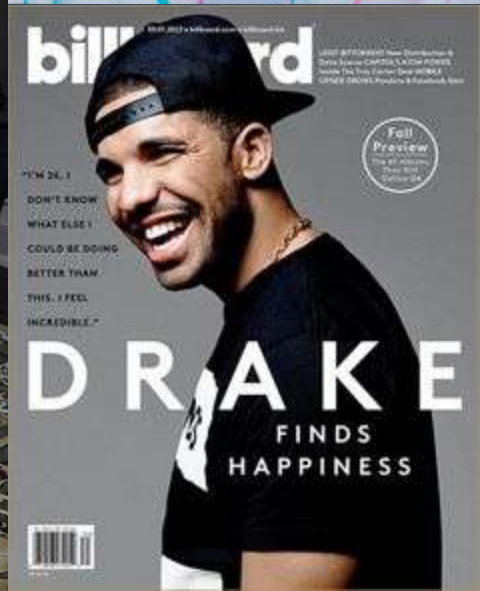




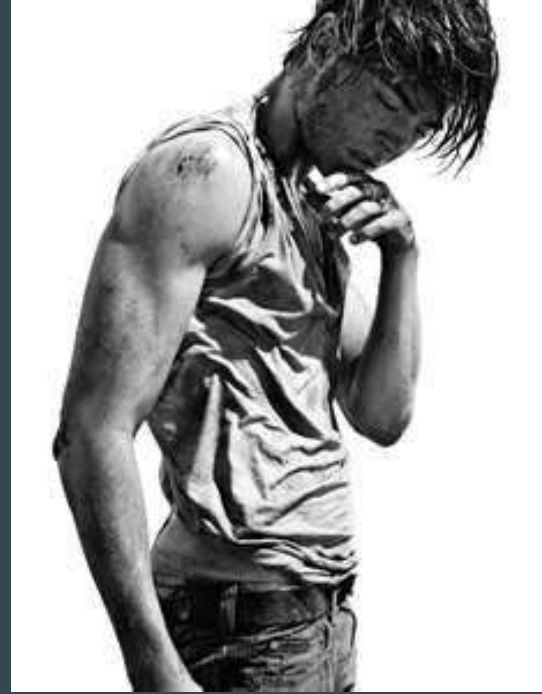


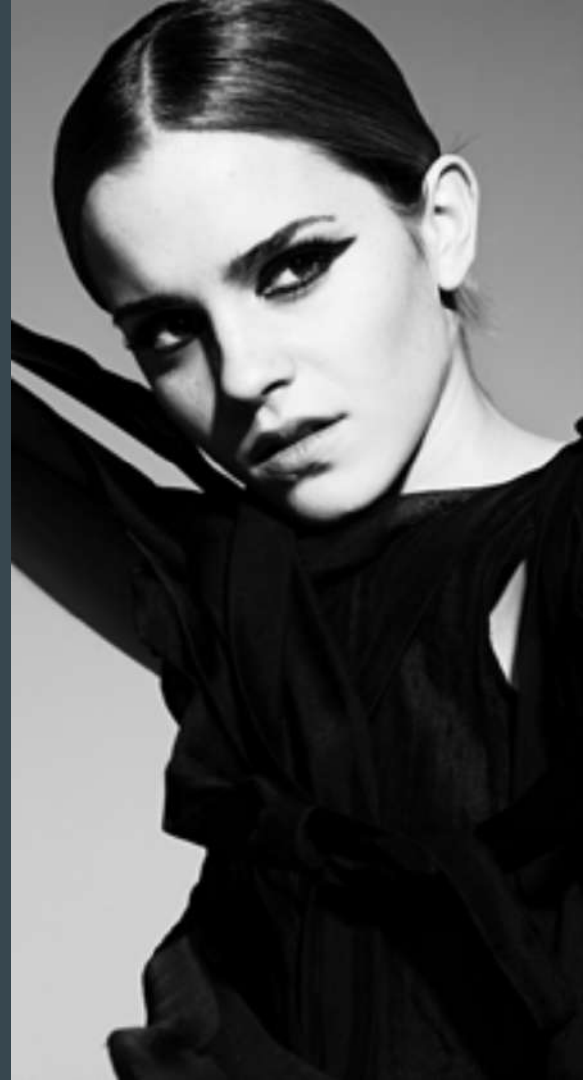












Your Assignment

2 photos of the same person,
everything about them must be different
(lighting, body language, distance,
location, clothing, etc)

Example

