

# Portraits

...

Active choices make all the difference

# Making intentional choices about the following changes the mood of the photograph

Lighting

Distance

Clothing

Angle

Hair

Movement

Location

Depth of Field

Body Language

Facial Expression

Props

Shadows

























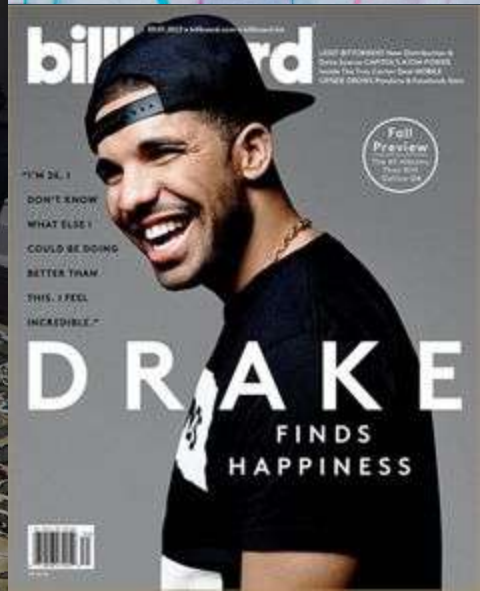




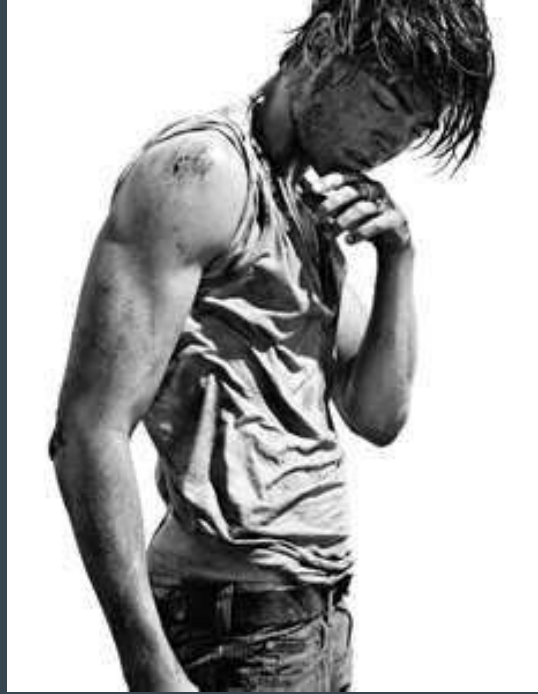


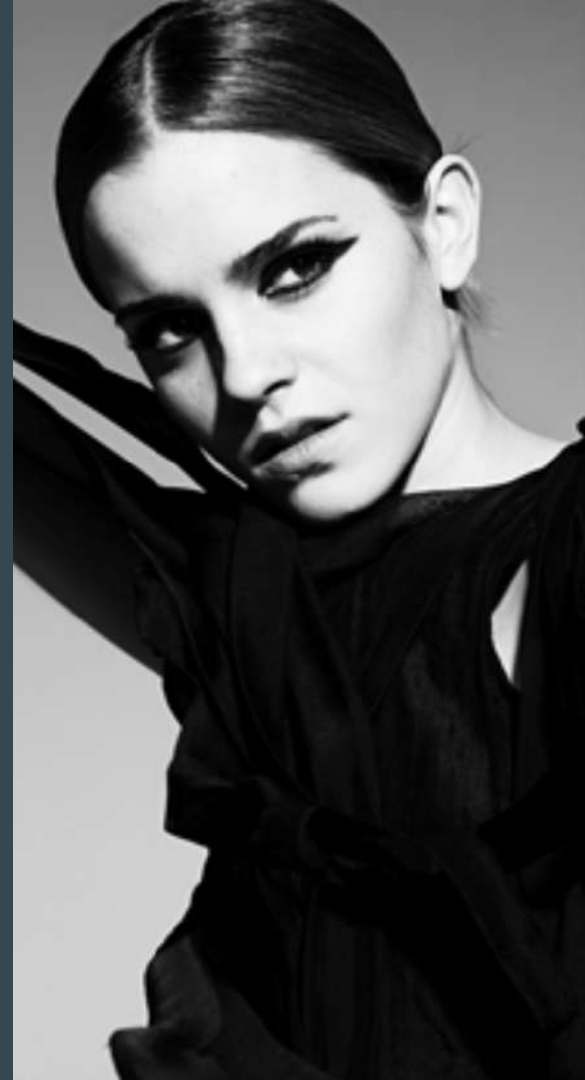
















## Your Assignment

2 photos of the same person,  
everything about them must be different  
(lighting, body language, distance,  
location, clothing, etc)

# Example

