



**PIERCE SCHOOL  
BROOKLINE, MA**

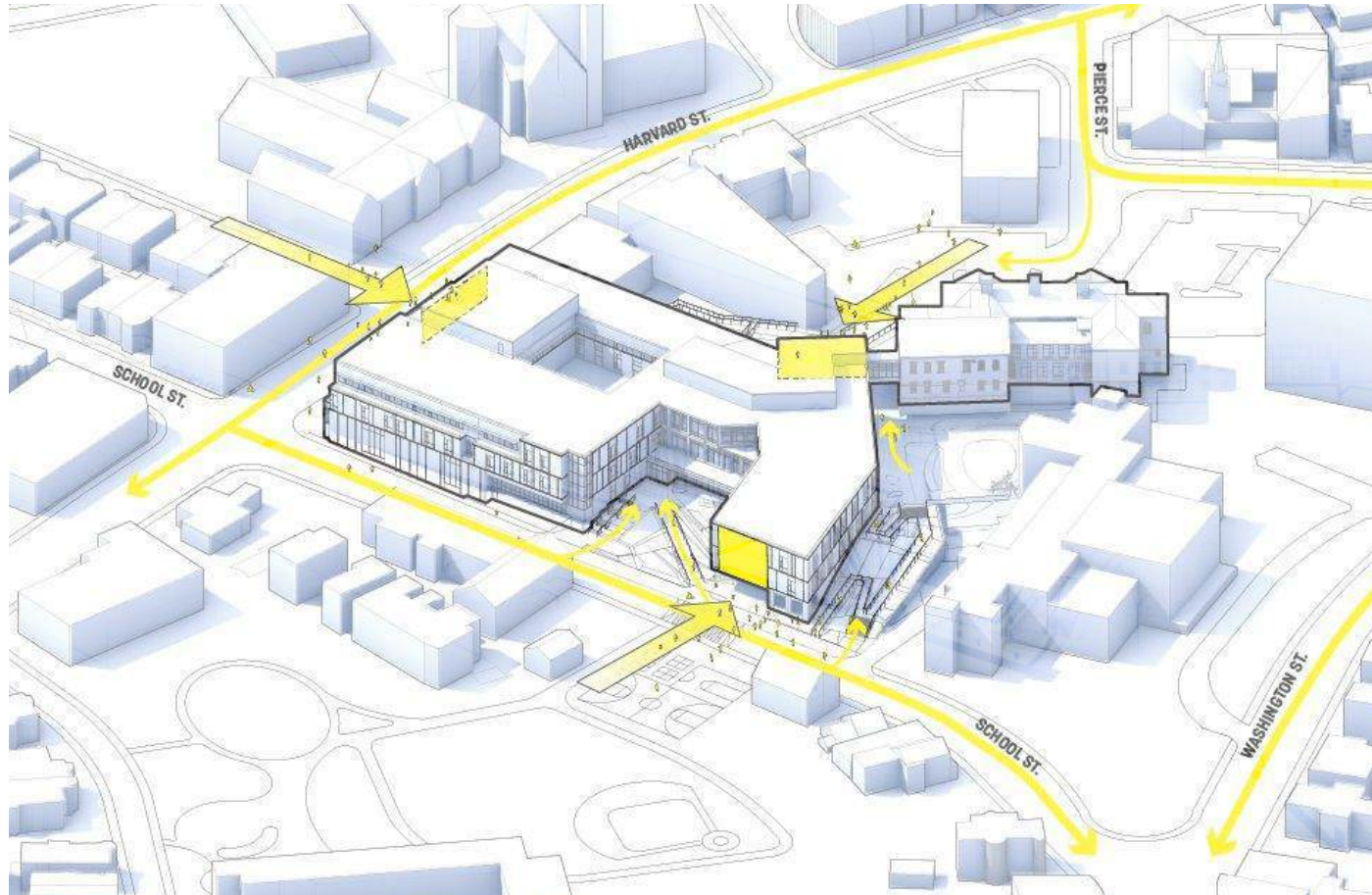
**SCHOOL COMMITTEE MEETING**

01 FEBRUARY 2024

**MDS**  
ARCHITECTS  
**SASAKI**

# DESIGN OVERVIEW

Circulation & Arrival



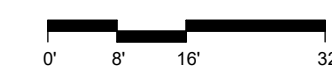
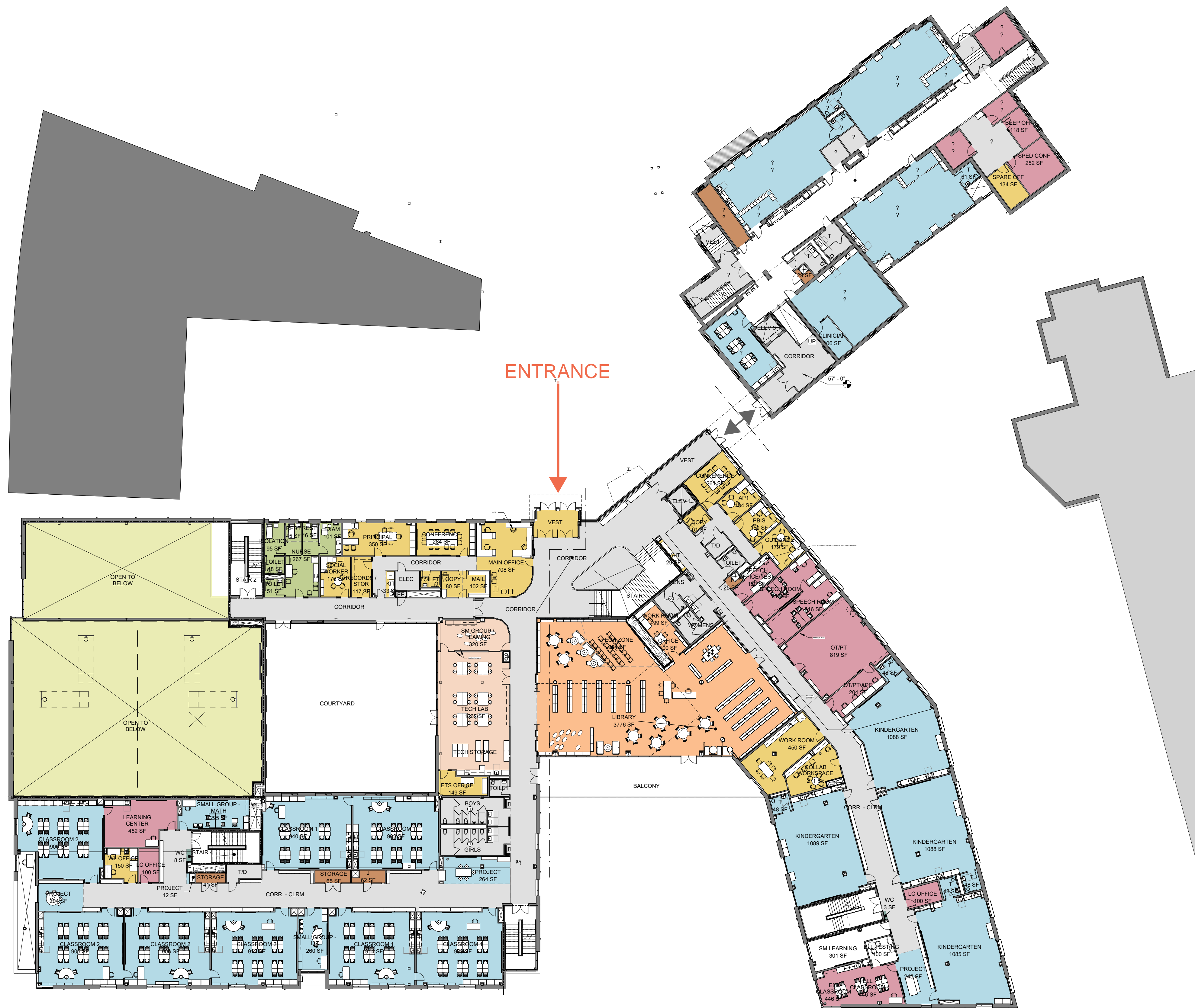
PROPOSED AXON VIEW











1 SECOND FLOOR PLAN

1. CORE ACADEMIC
2. SPECIAL EDUCATION
3. ART & MUSIC
4. VOCATIONS & TECHNOLOGY
5. HEALTH & PHYSICAL EDUCATION
6. MEDIA CENTER
7. DINING & FOOD SERVICE
8. MEDICAL
9. ADMINISTRATION & GUIDANCE
10. CUSTODIAL & MAINTENANCE
11. OTHER
13. PARKING EXCLUDED
14. NON-PROGRAMED SPACE





1 THIRD FLOOR PLAN

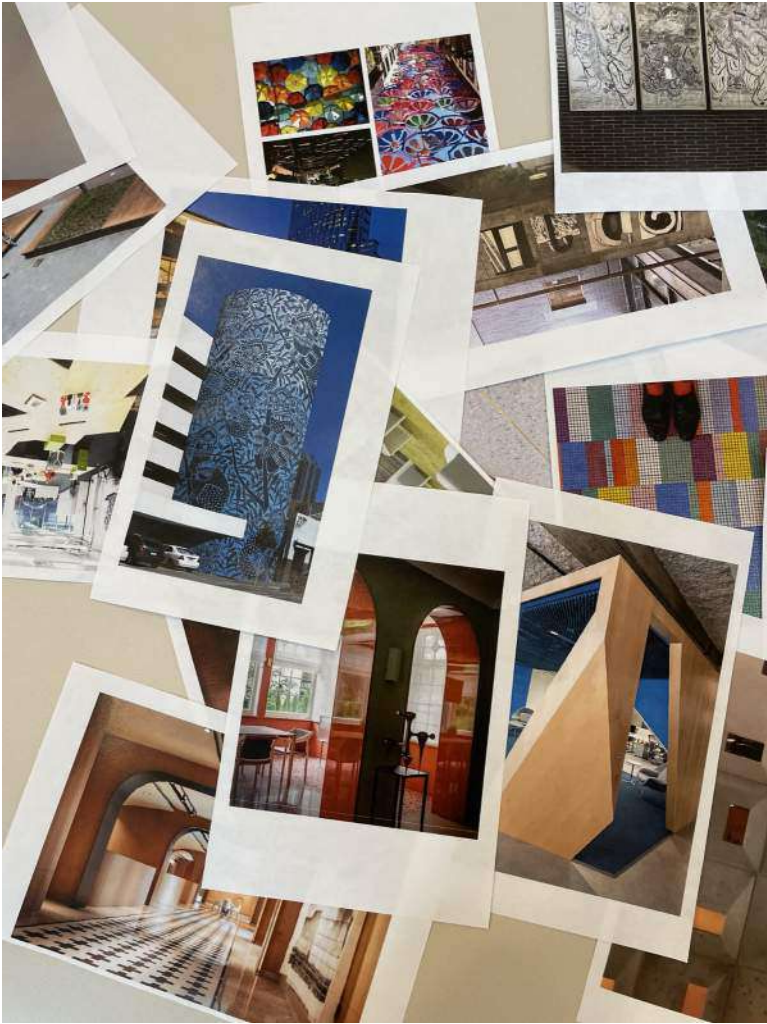
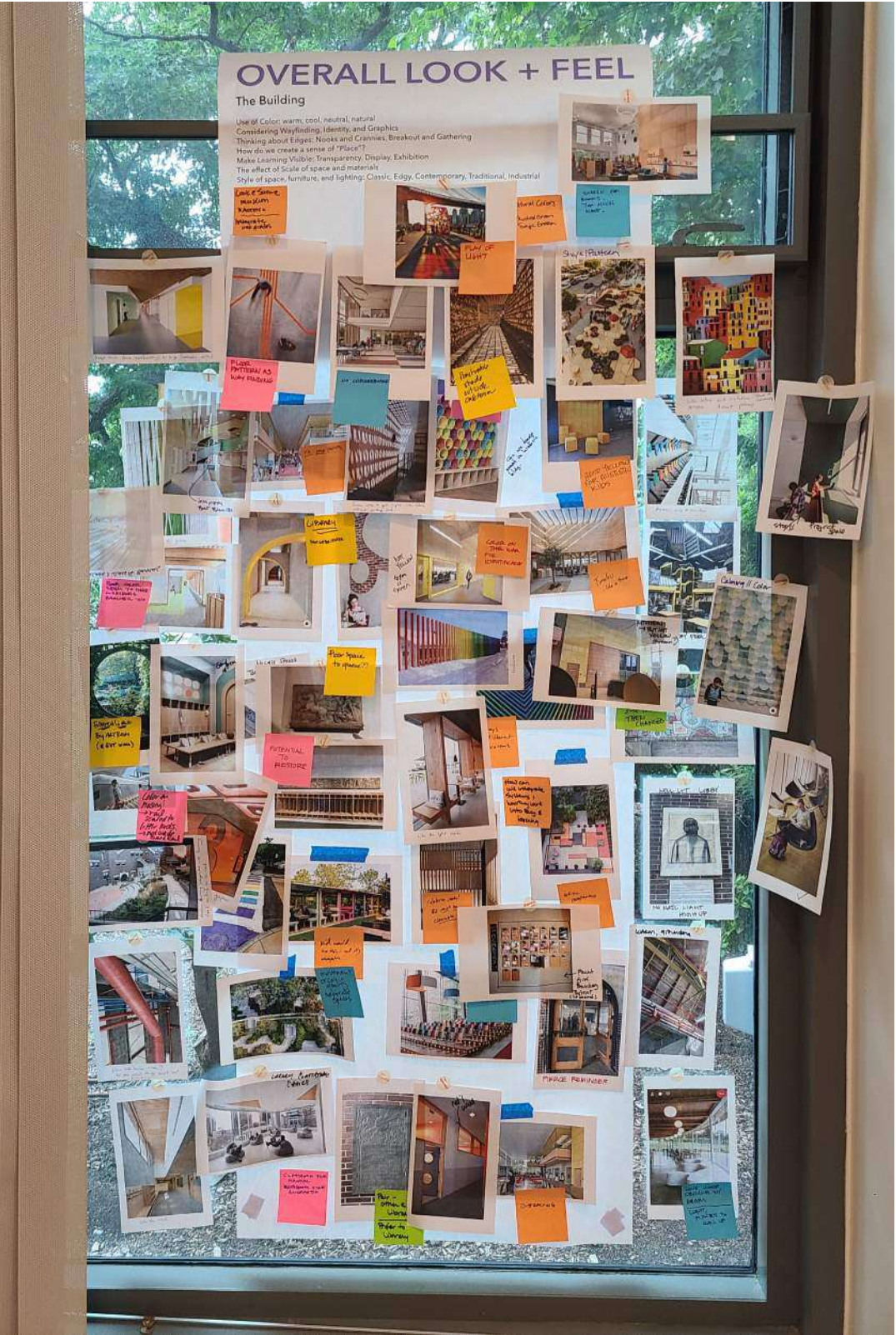
## THIRD FLOOR PLAN



## INTERIOR DESIGN



# DESIGN DEVELOPMENT WORKSHOP





# URBAN DESIGN PRINCIPLES

Thinking of Pierce as a City

- Town Square
- Landmark
- Main Street
- Side Street
- Oases



## PATH

BOULEVARDS  
SIDE STREETS  
FOOT PATHS

CORRIDORS  
MEDIA CENTER CUT-THROUGH  
DINING / CAFETERIA CUT-THROUGH



## OASIS NODE

PROJECT SPACES  
COURTYARD  
NOOKS & CRANNIES



## LANDMARK

MONUMENTAL STAIR  
BRIDGE TO HISTORIC BUILDING  
COURTYARD WALL  
HISTORIC BUILDING ENTRY  
ARTWORK



## EDGE

ENTRY WALL OF CLASSROOMS  
CONNECTION TO THE LANDSCAPE  
PERIMETER OF SHARED SPACES  
EDGES OF CORRIDORS



## NEIGHBORHOODS DISTRICTS

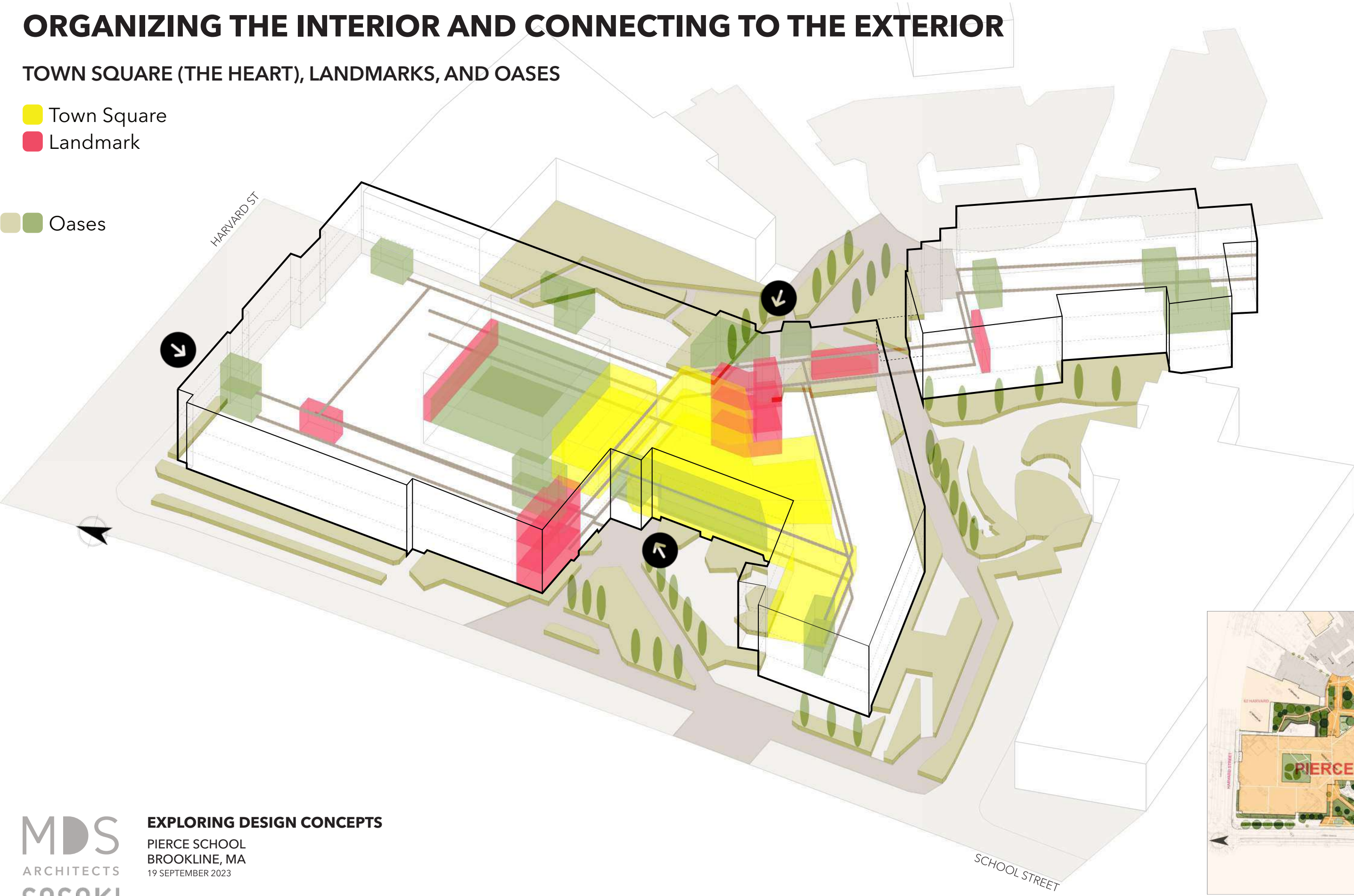
CLASSROOMS BY GRADE  
ADMIN AND SUPPORT SPACES  
SHARED RESOURCES

# ORGANIZING THE INTERIOR AND CONNECTING TO THE EXTERIOR

TOWN SQUARE (THE HEART), LANDMARKS, AND OASES

- Town Square
- Landmark

Oases

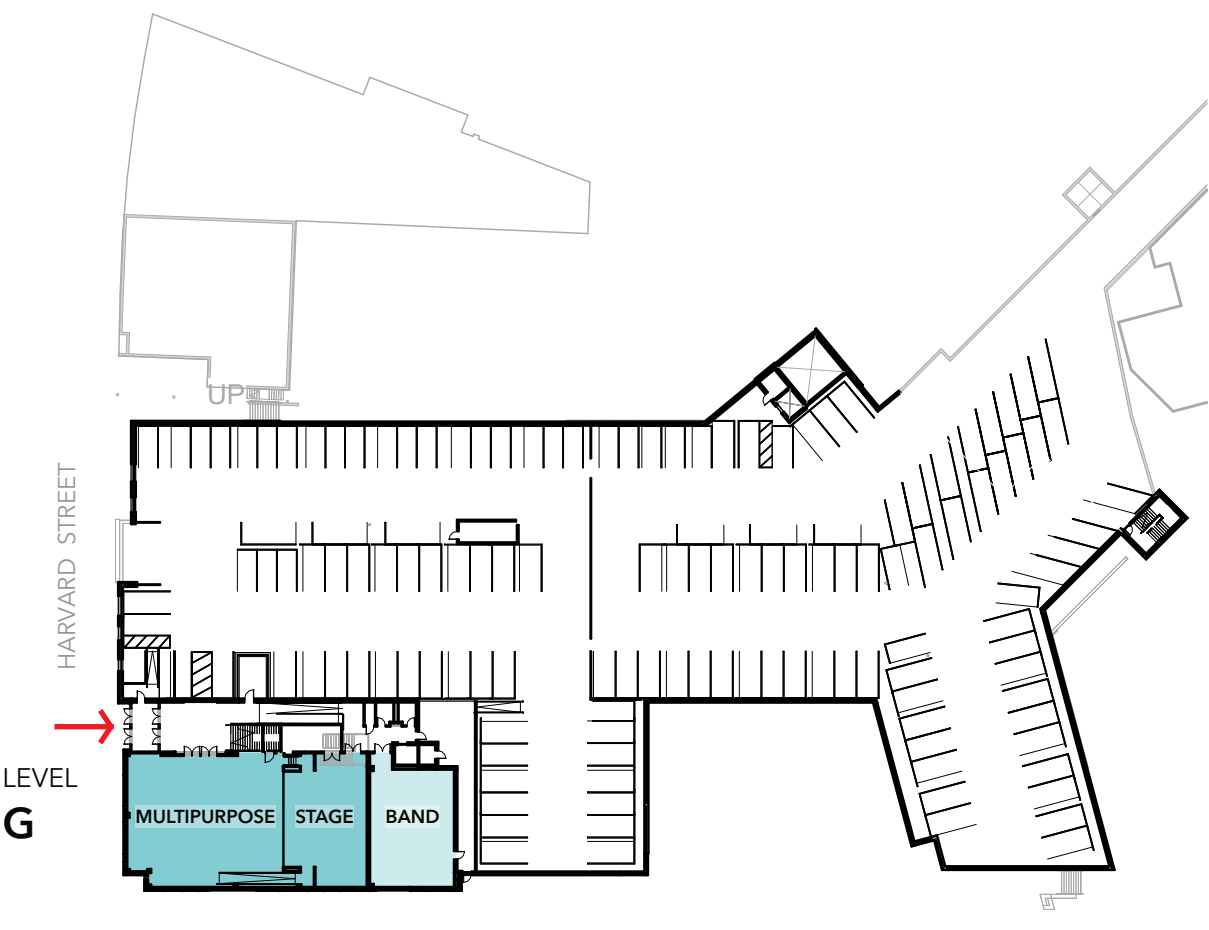
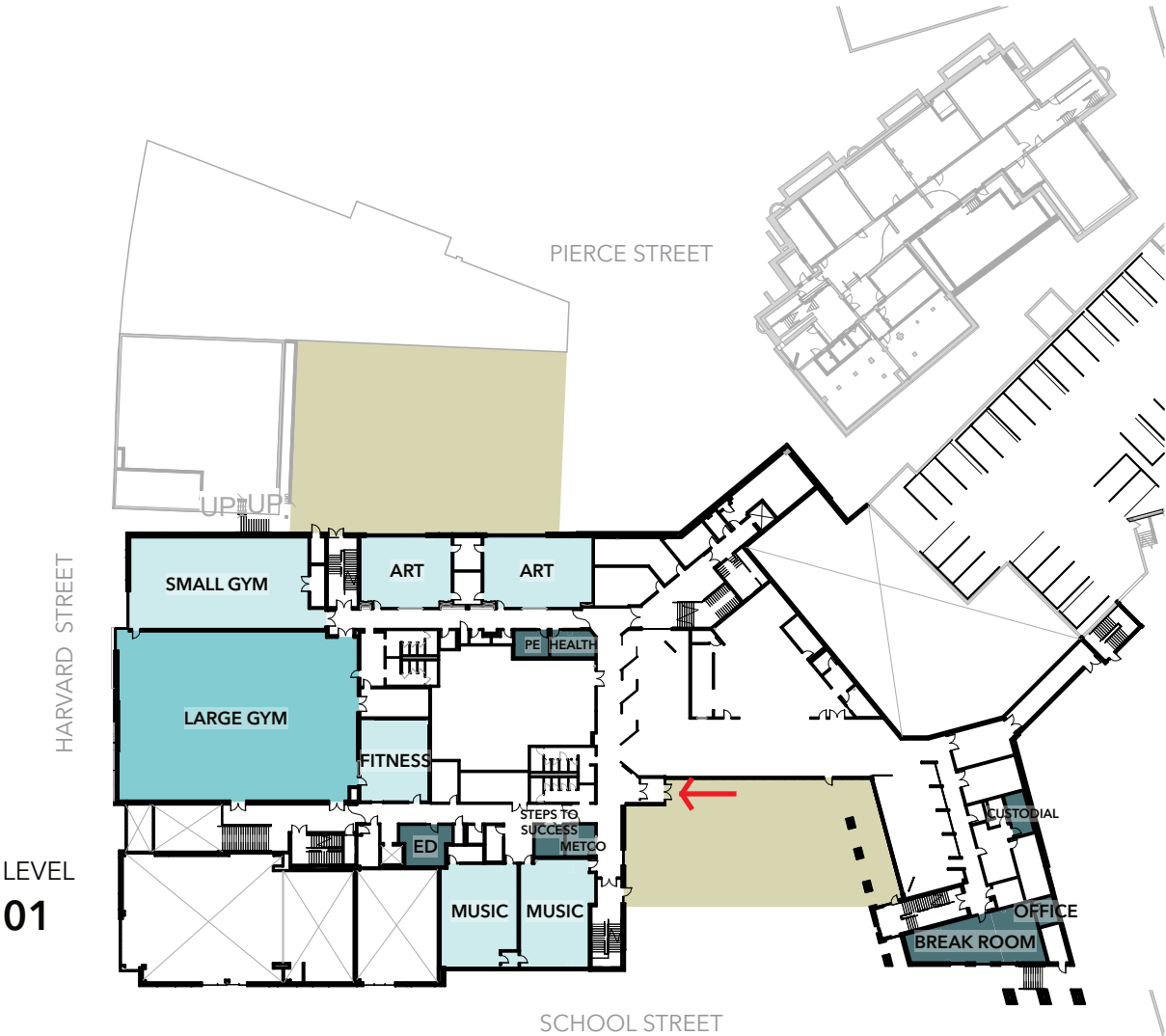




# MAPPING THE NEIGHBORHOODS

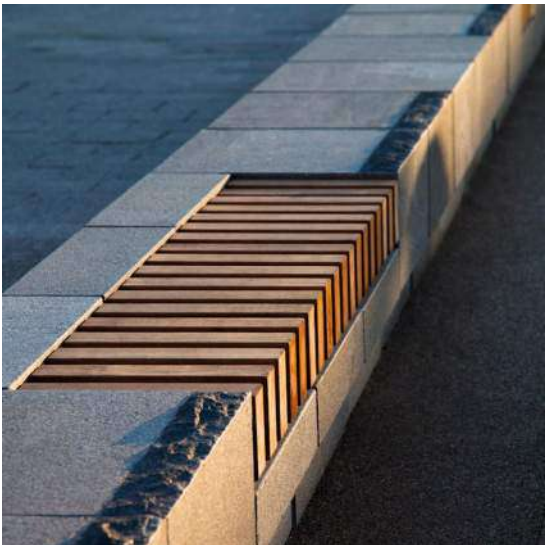
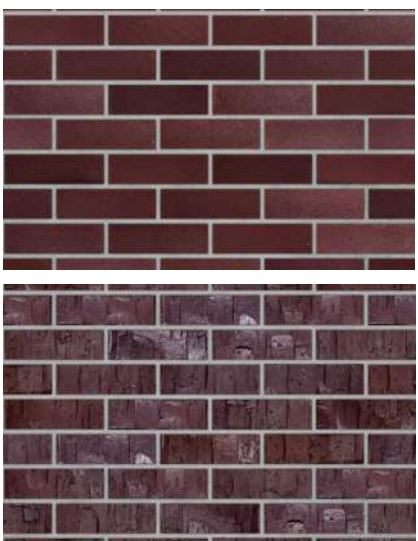
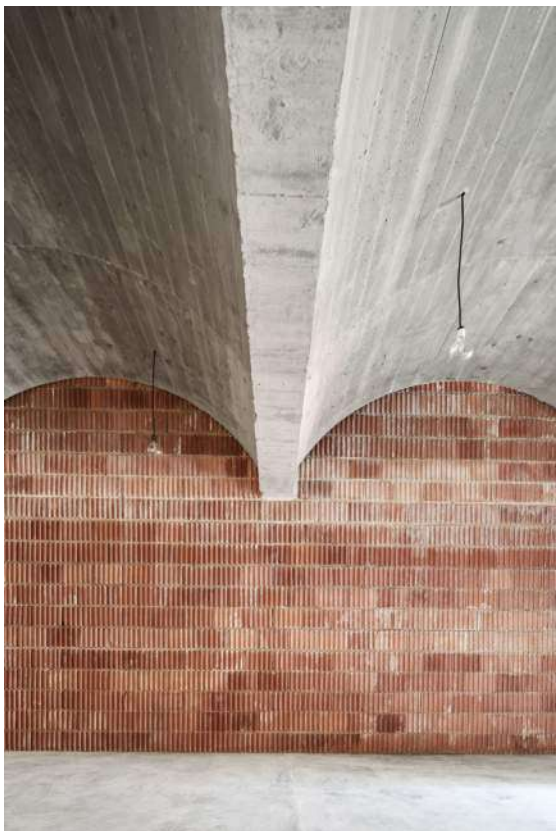
- Exploration Neighborhood - Pre K-2 Classrooms
- Creation Neighborhood - 3-5 Classrooms
- Innovation Neighborhood - 6-8 Classrooms

- Administrative / Support
- Shared Community Spaces and Specialty Classrooms
- Oases



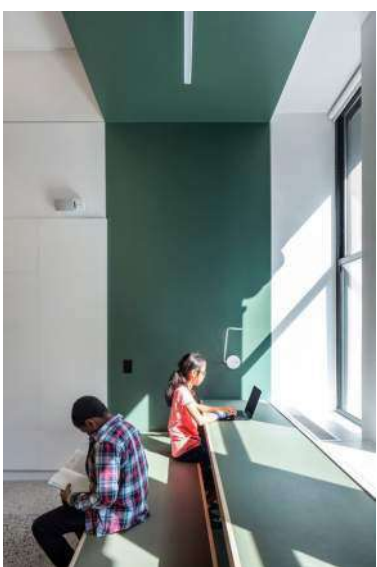


# URBAN NEUTRALS



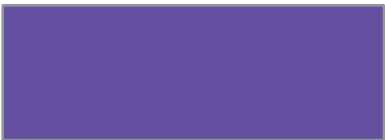
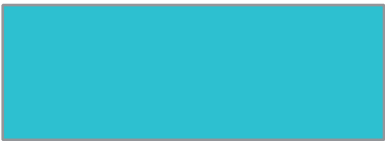
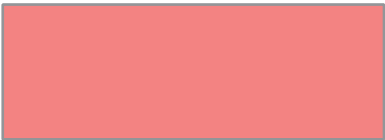
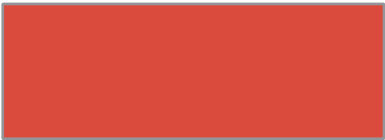


# GREEN AS A RANGE





BRIGHTS AS AN ACCENT





MAIN STAIR  
SECOND FLOOR



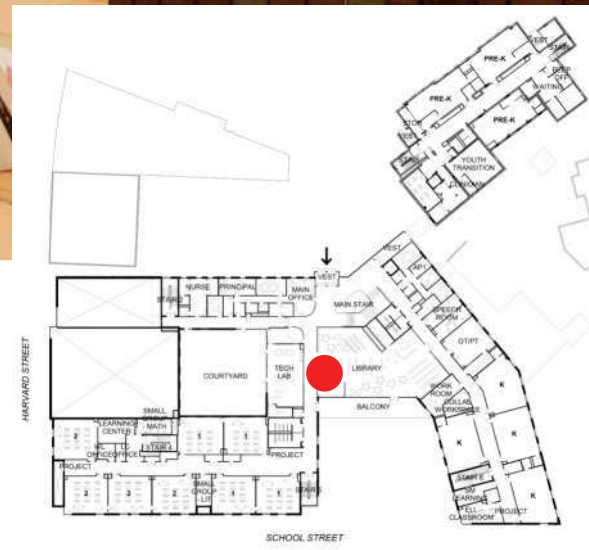


## FLOOR PLAN



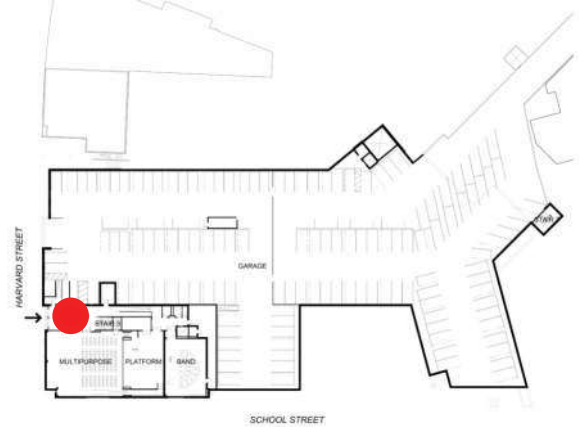


## A large, modern library interior with a curved wall covered in colorful book covers, wooden shelving, and a mezzanine level. A young girl is smiling in the foreground, and a floor plan inset is visible in the bottom right corner.



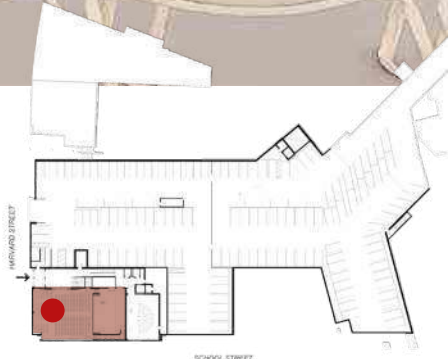


HARVARD STREET ENTRY



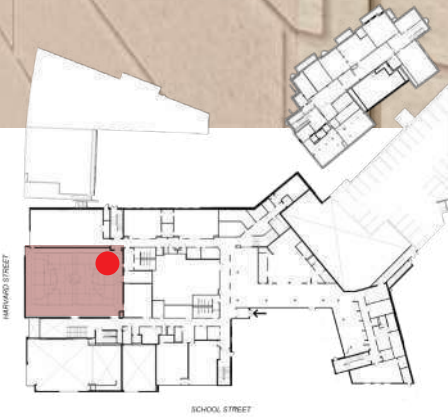


# MULTIPURPOSE ROOM





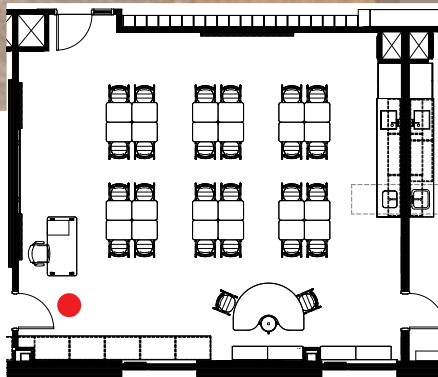
GYM  
3D VIEW





# CLASSROOM

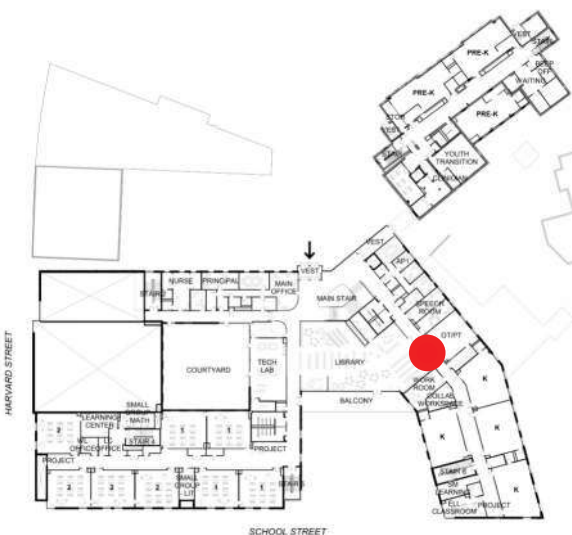
3D VIEW





# CLASSROOM CORRIDORS

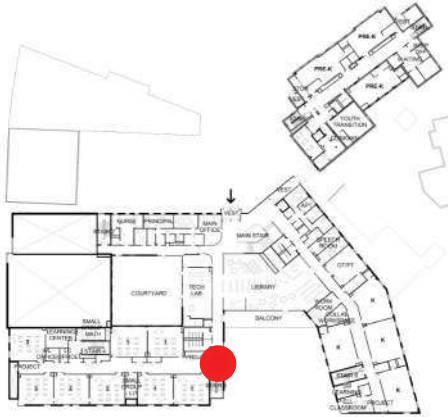
## EXPLORATION CORRIDOR (KINDERGARTEN)





# CLASSROOM CORRIDORS

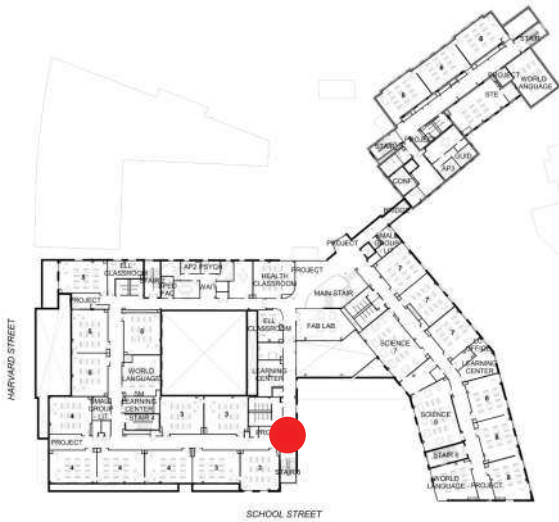
EXPLORATION CORRIDOR (GRADES 1, 2)





# CLASSROOM CORRIDORS

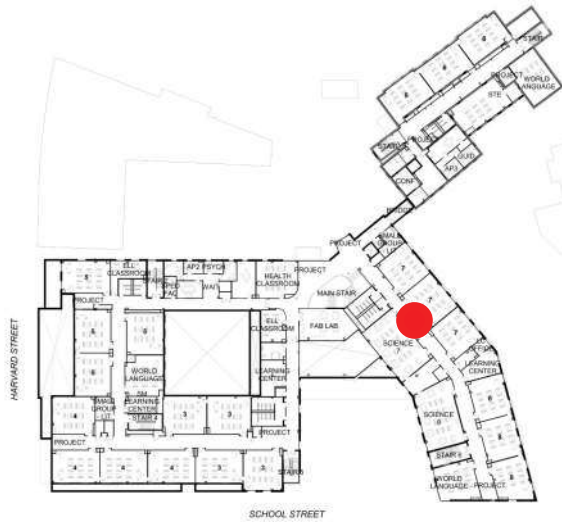
CREATION CORRIDOR (GRADES 3, 4, 5)





# CLASSROOM CORRIDORS

INNOVATION CORRIDOR - NEW CONSTRUCTION (GRADES 7 & 8)





## HISTORIC BUILDING

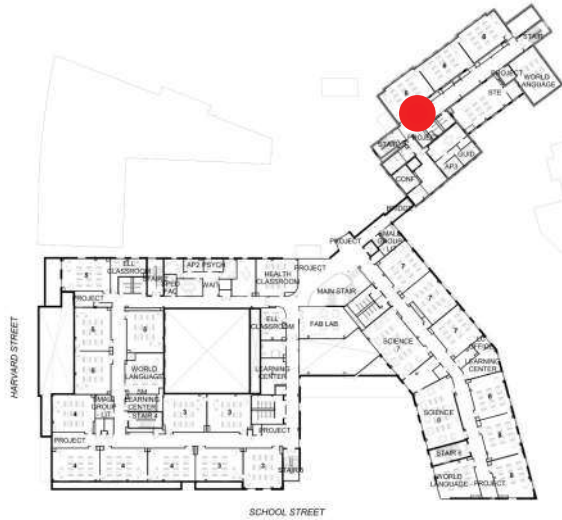
## EXPLORATION - PRE-K CORRIDOR





# HISTORIC BUILDING

## INNOVATION - 6TH GRADE CORRIDOR





## EXTERIOR AND LANDSCAPE DESIGN

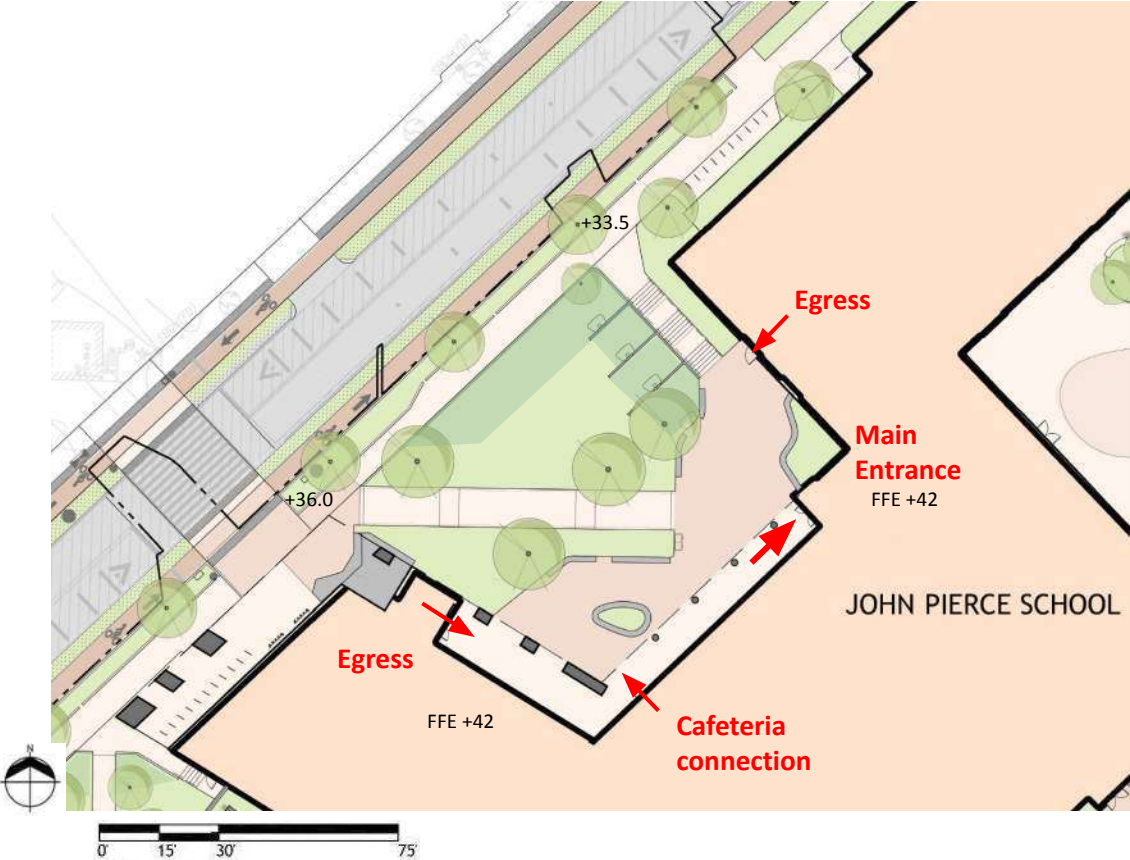


SITE PLAN





# SCHOOL STREET PLAZA

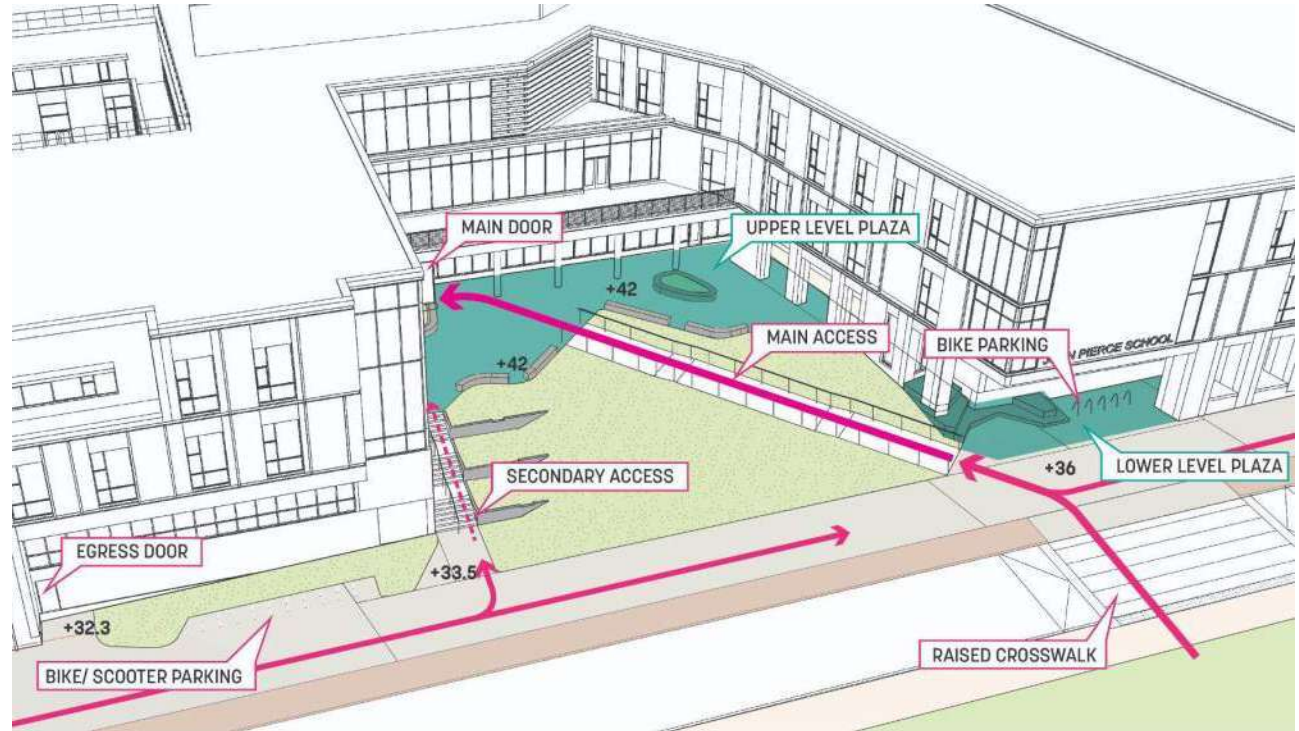




# SCHOOL STREET

## CIRCULATION

- Safe, welcoming and distinctive gateways to school
- Intuitive wayfinding
- Universal access
- Comfortable social spaces with amenities





**SCHOOL STREET**  
VIEW FROM CROSSWALK





# SCHOOL STREET PLAZA

VIEW FROM ENTRY RAMP



**MDS** **SASAKI**  
ARCHITECTS



**SCHOOL STREET PLAZA**  
VIEW FROM ENTRY VESTIBULE



**MDS** **SASAKI**  
ARCHITECTS

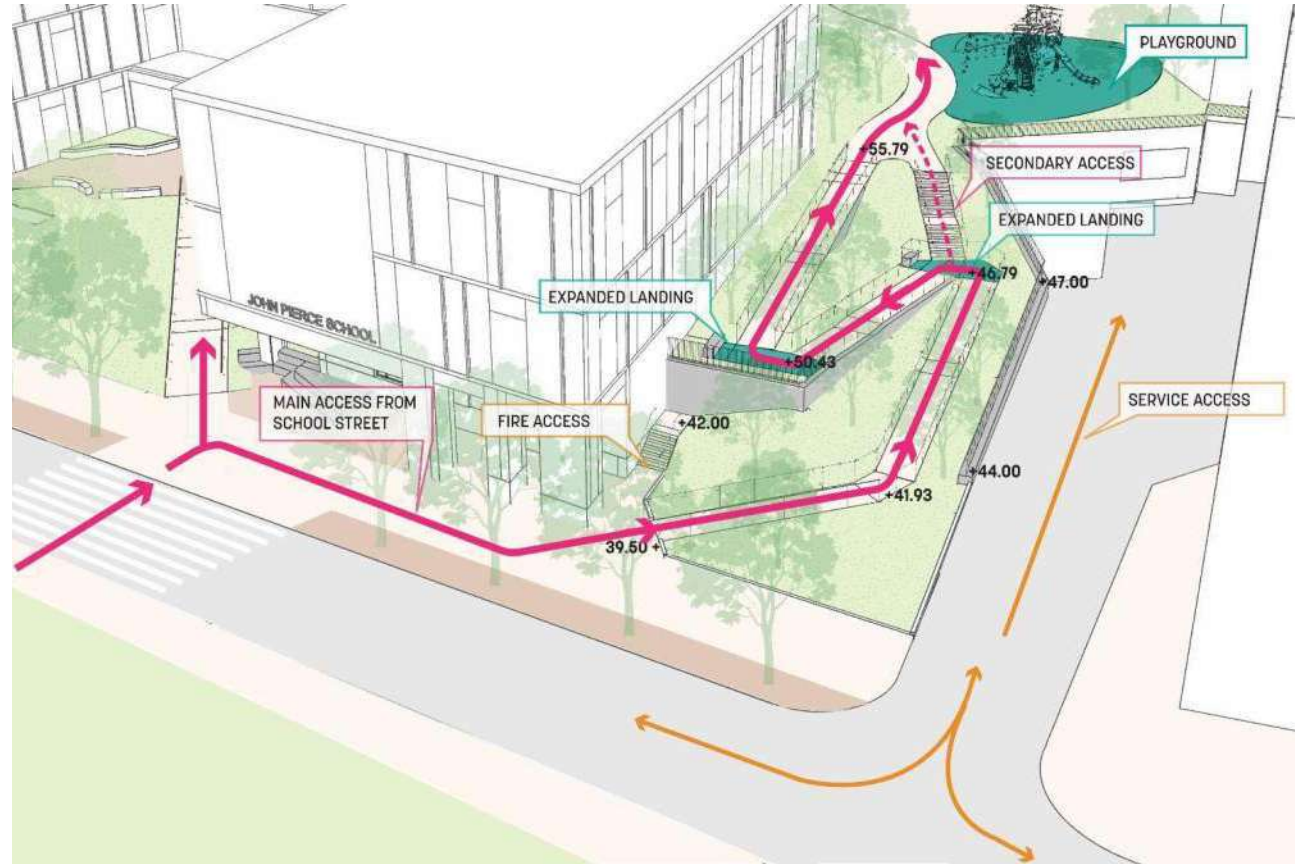
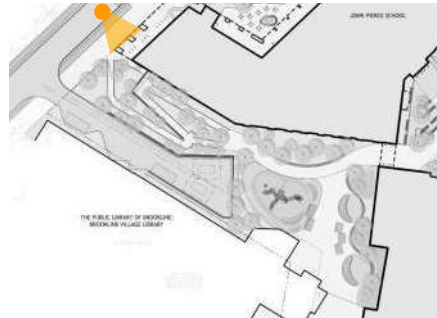




# GREEN RAMP

## CIRCULATION

- Safe, welcoming and distinctive gateways to school
- Intuitive wayfinding
- Universal access



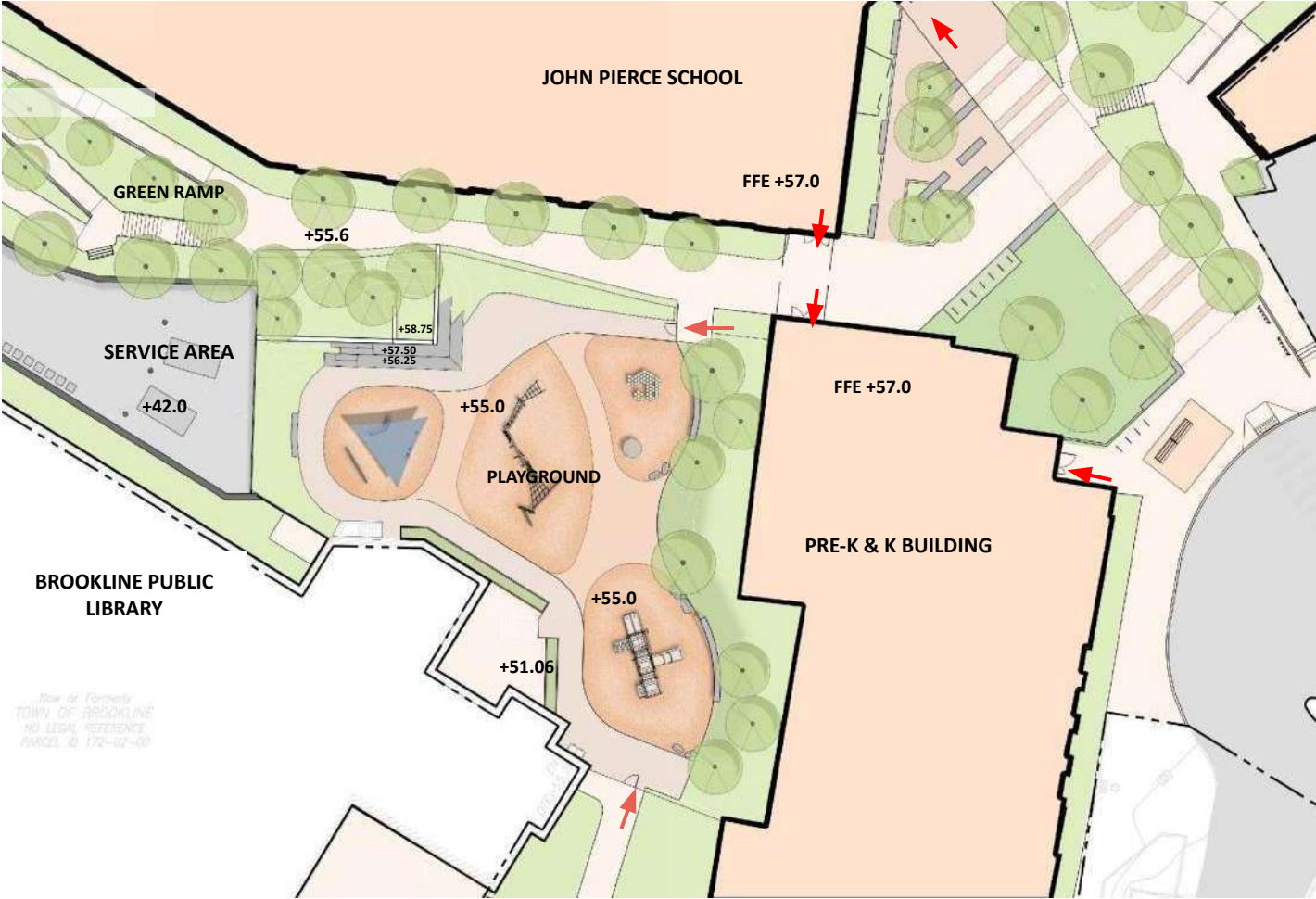


**GREEN RAMP**  
VIEW





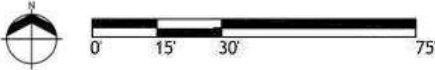
**PLAYGROUND**  
Revised Layout Study



*Now or Formerly  
TOWN OF BROOKLINE  
NO LEGAL REFERENCE  
PARCEL ID: 172-02-00*

PREVIOUS LAYOUT

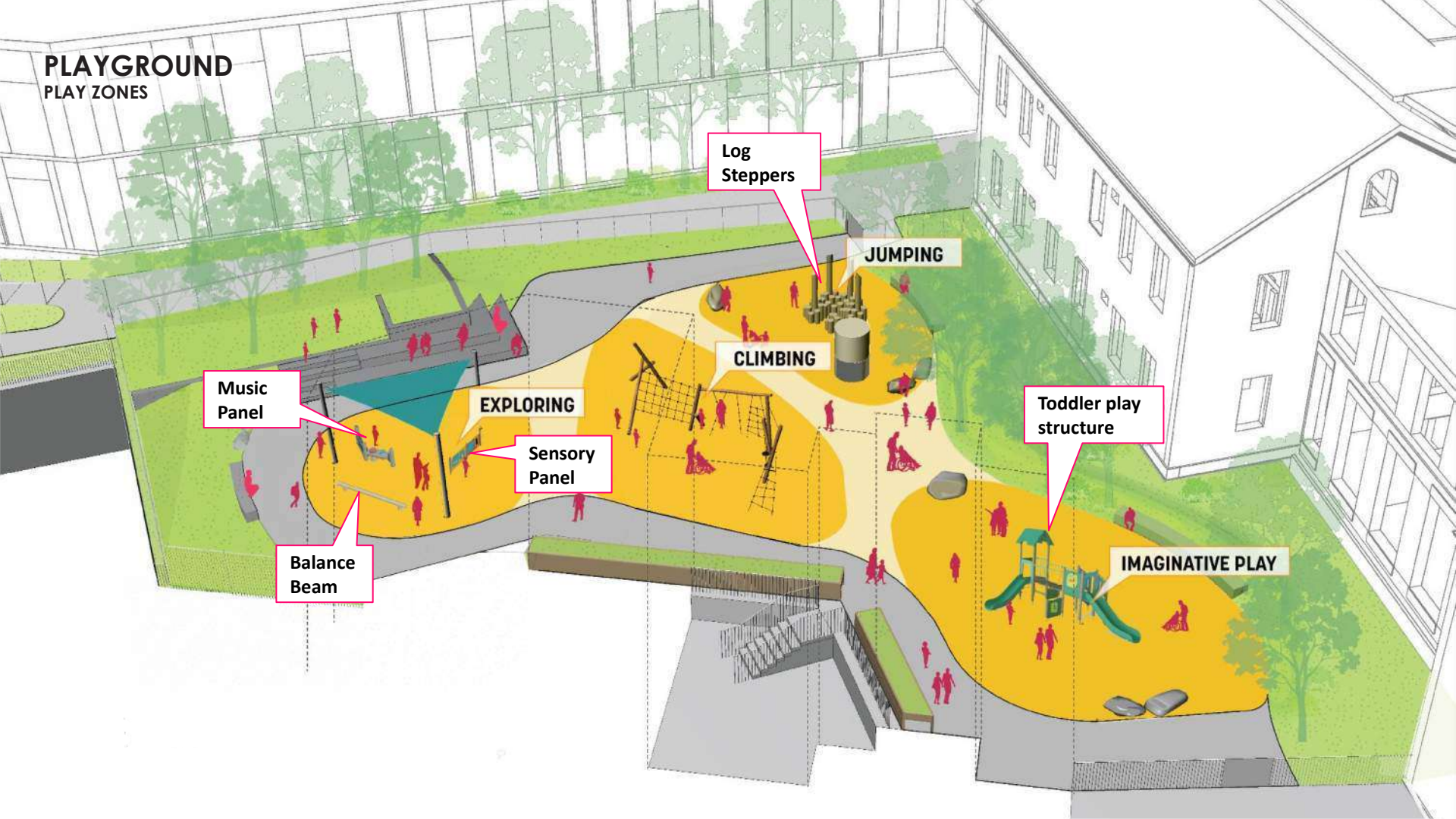
**MDS SASAKI**  
ARCHITECTS





# PLAYGROUND

## PLAY ZONES





## PLAYGROUND EQUIPMENT EXAMPLES



CLIMBING

CLIMBING NET



JUMPING

STEPPER



SENSORY

SENSORY PLAY PANEL



MUSIC PLAY PANEL

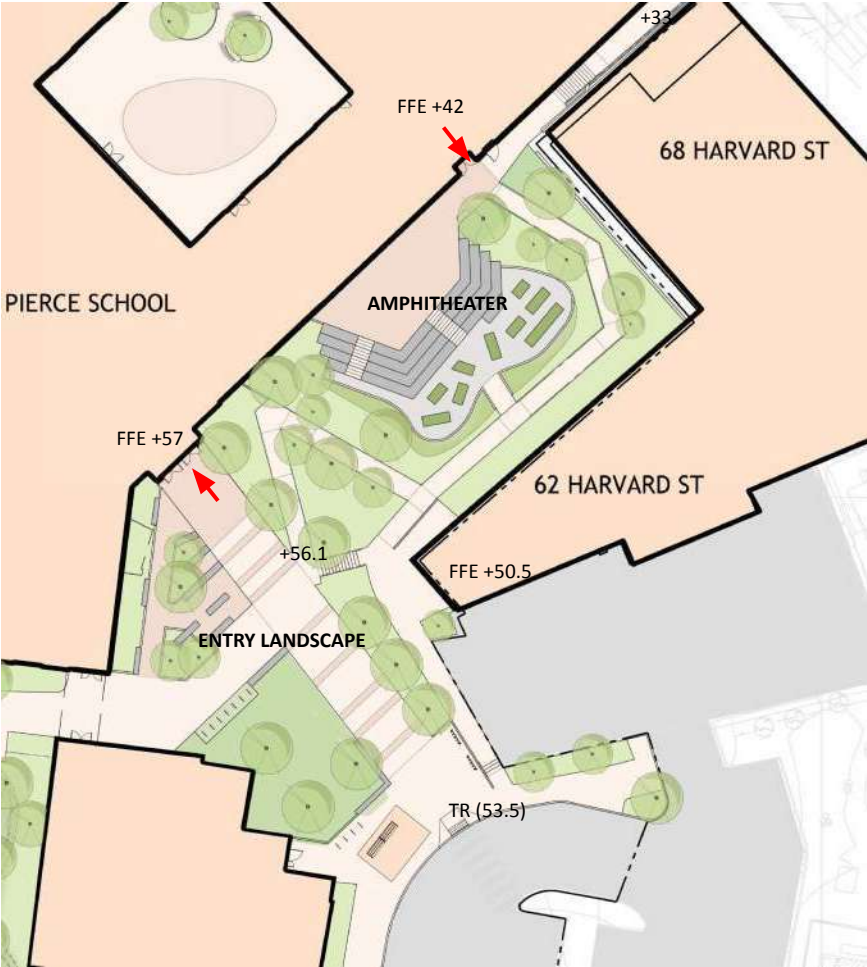


IMAGINATIVE

PLAY TOWER



# PIERCE STREET ENTRY & AMPHITHEATER LANDSCAPE



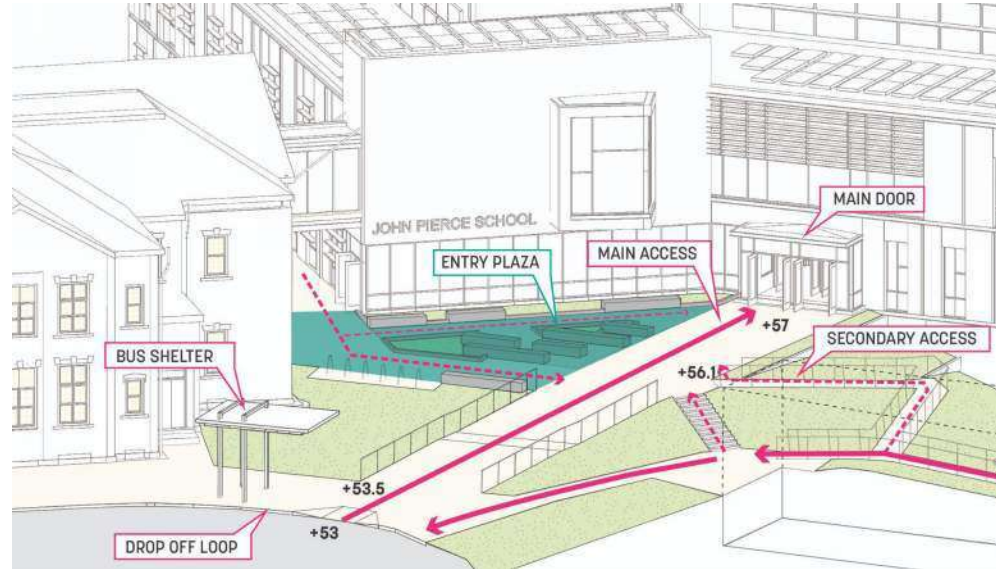


# PIERCE STREET ENTRY PLAZA

## CIRCULATION AND GATHERING



- Safe, welcoming and distinctive gateways to school
- Intuitive wayfinding
- Universal access





**PIERCE STREET ENTRY PLAZA**  
VIEW FROM DROP-OFF LOOP

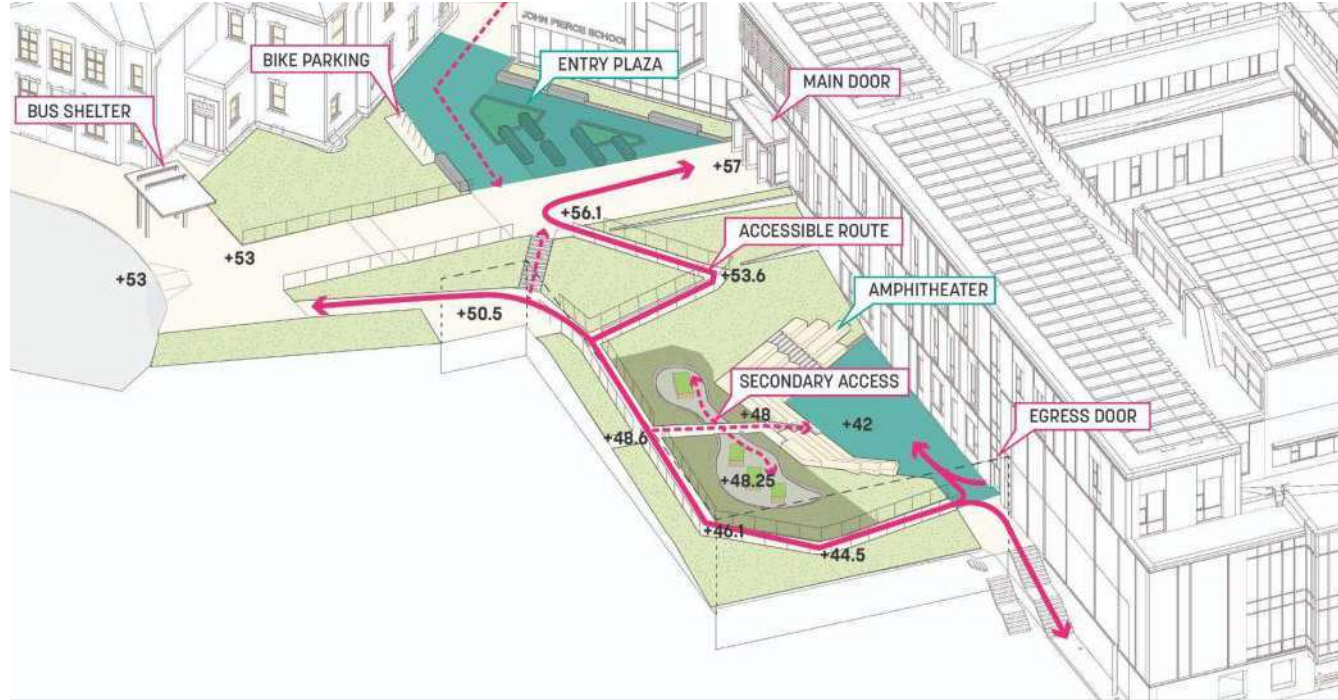
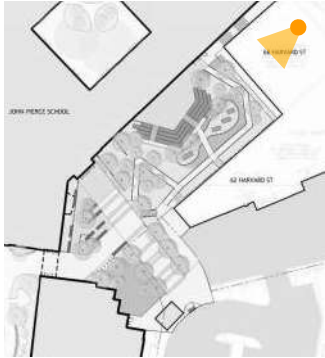




# AMPHITHEATER

## ENTRY AND ACCESS

- Universal access at top and bottom of amphitheater

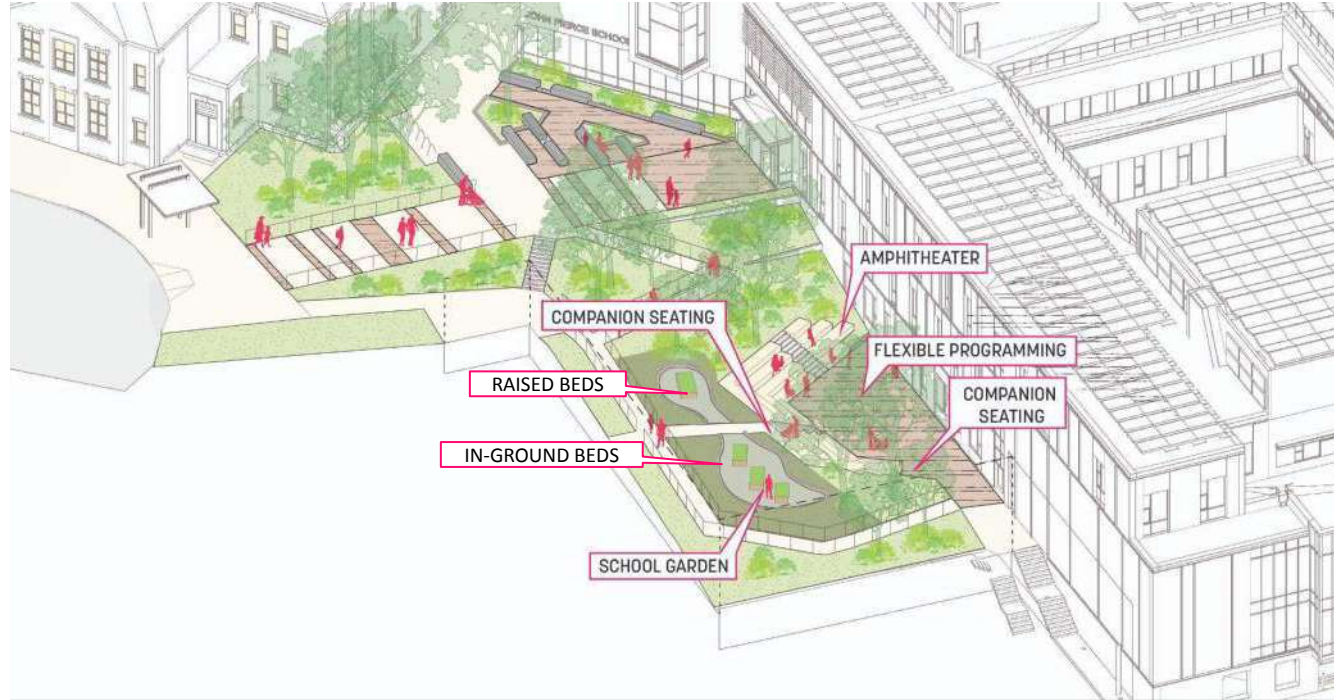




# AMPHITHEATER

## SOCIAL GATHERING

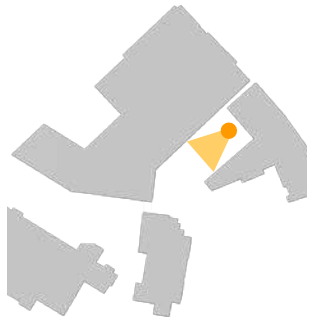
- Amphitheater seating for 80-100 students
- ADA companion seating at top and bottom levels
- Flexible programming opportunities
- School Garden Program: Raised and in-ground beds





# AMPHITHEATER

VIEW FROM AMPHITHEATER

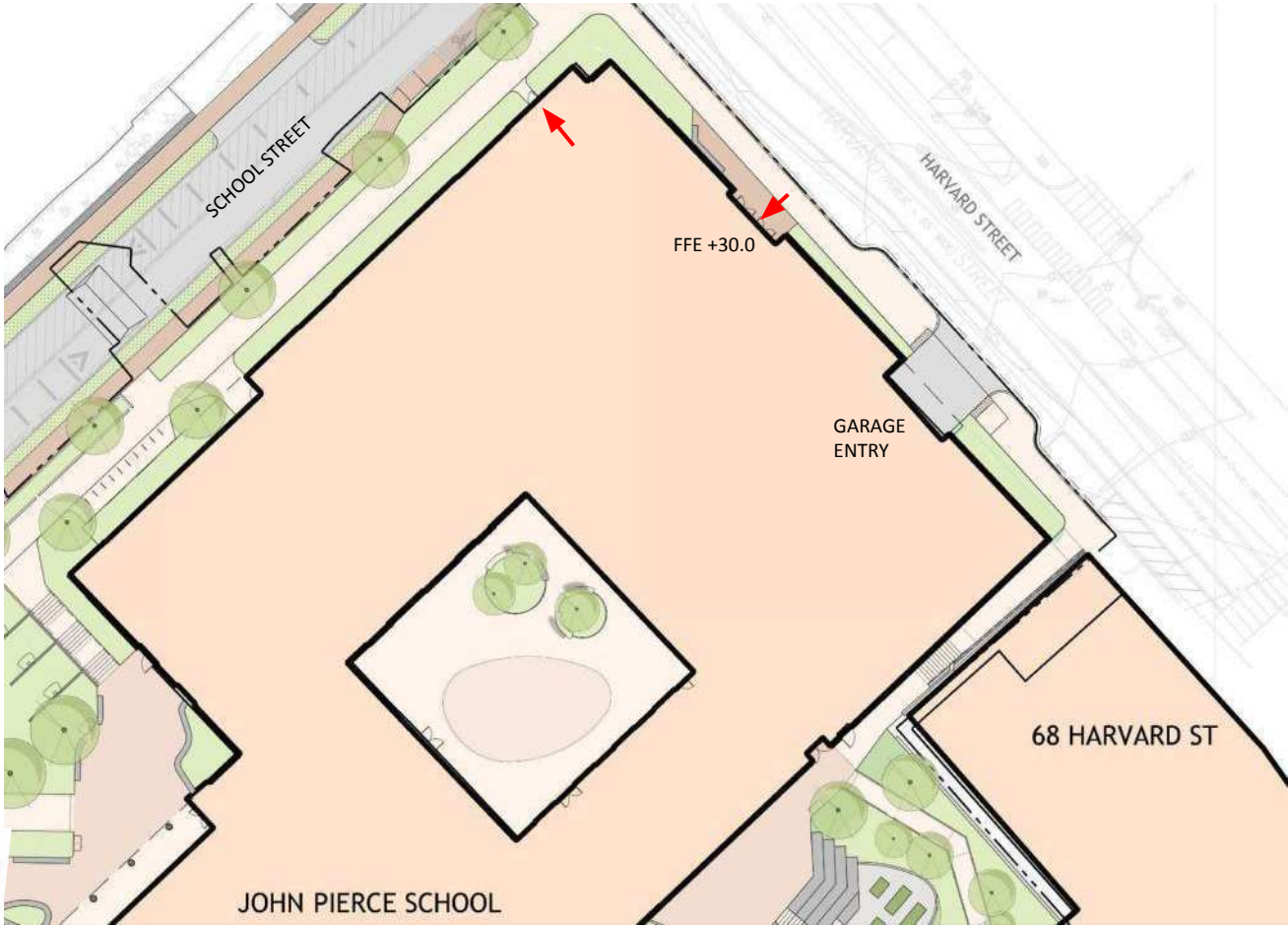


**MDS** **SASAKI**  
ARCHITECTS



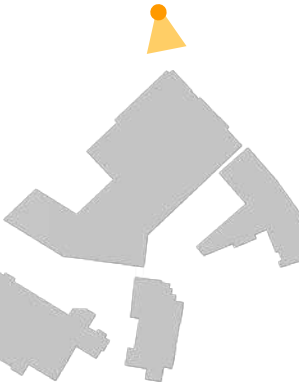


# HARVARD STREET STREETSCAPE





**HARVARD STREET**  
**VIEW**

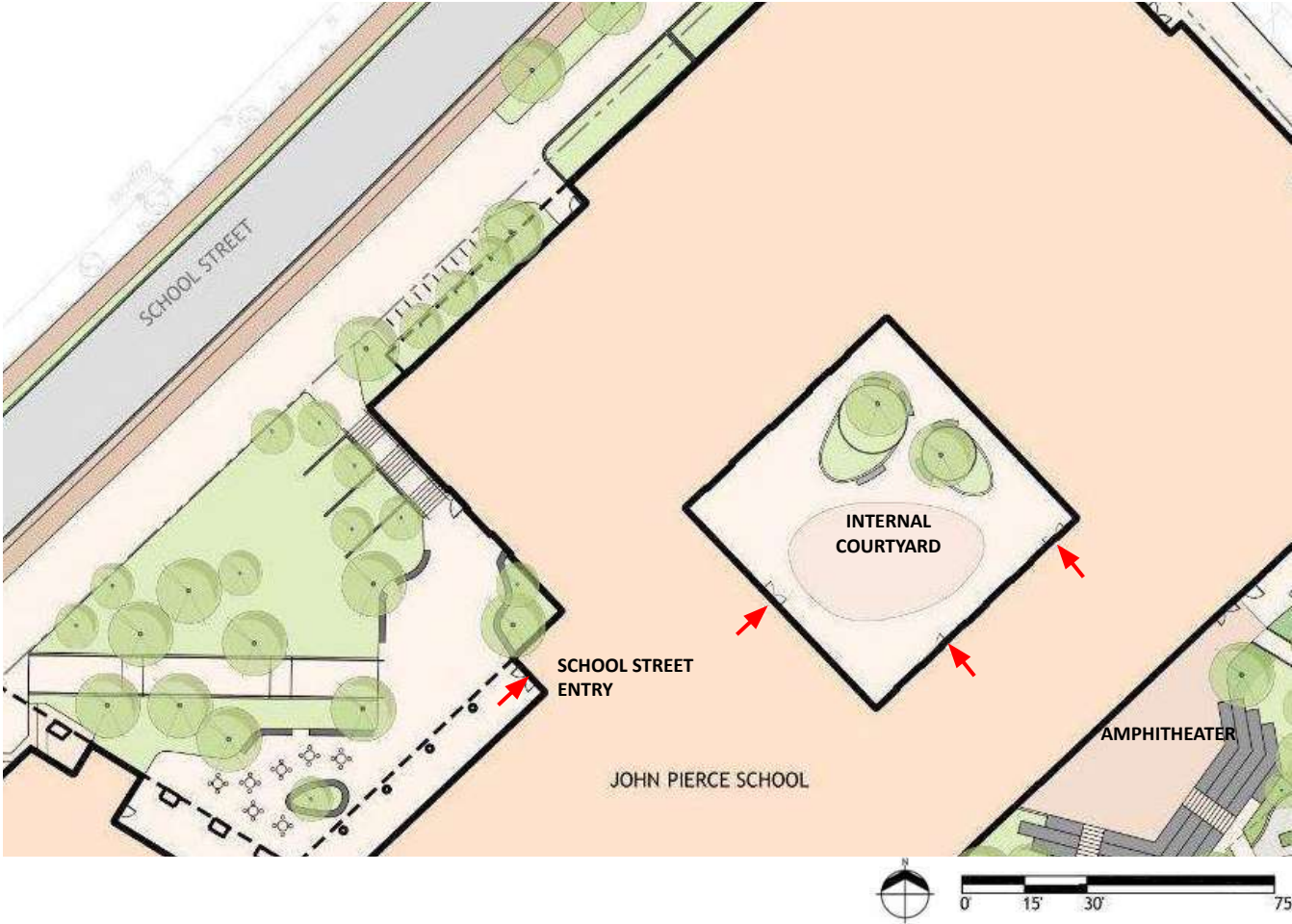


**MDS** **SASAKI**  
ARCHITECTS





COURTYARD  
UPDATED PLAN

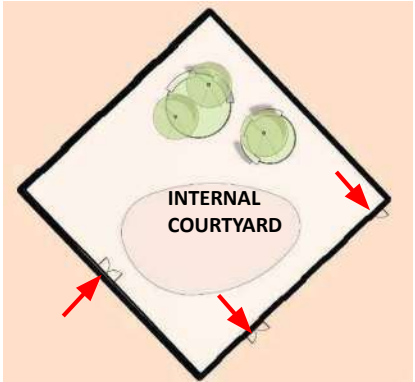




COURTYARD

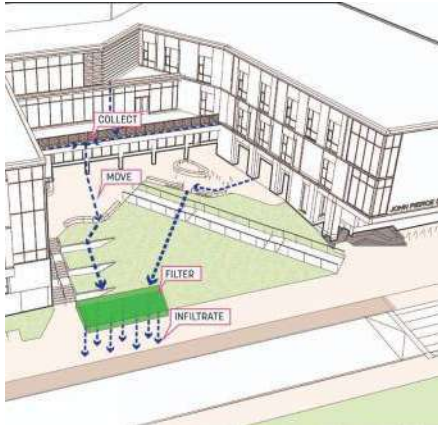


**MDS** **SASAKI**  
ARCHITECTS

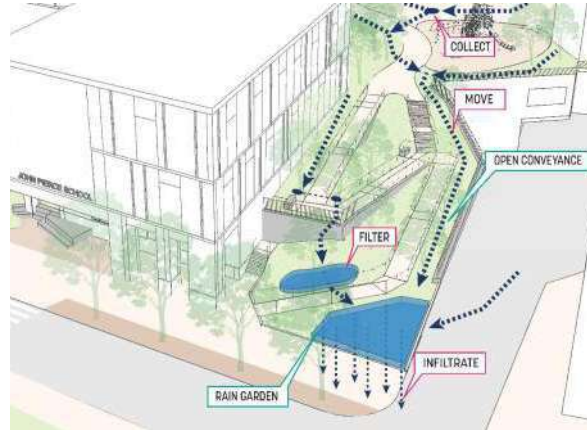


# GREEN INFRASTRUCTURE

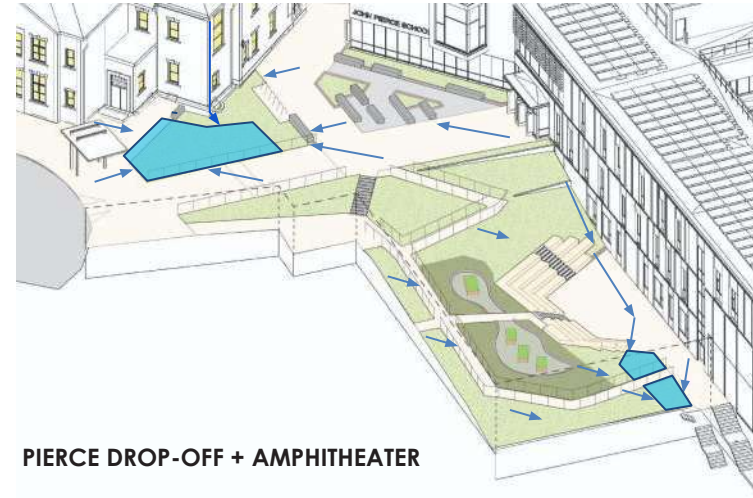
## Stormwater Management



SCHOOL STREET PLAZA



GREEN RAMP + PLAYGROUND



PIERCE DROP-OFF + AMPHITHEATER

- Minimize impervious surface area
- Reduce and slow runoff
- Promote infiltration when possible
- Provide visible, educational displays of environmental stewardship



# GREEN INFRASTRUCTURE

## PRECEDENTS



INTEGRATED INTO LANDSCAPE



CELEBRATE CONVEYANCE



INTERPRETIVE GRAPHICS AND EDUCATION

# DISCUSSION