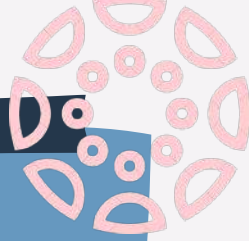
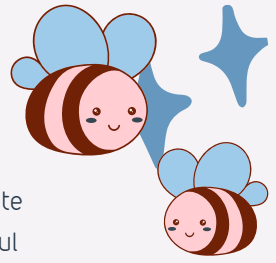


PHYSICAL SCIENCE 8

6 Bees

- Bee Positive
- Bee Creative
- Bee Passionate
- Bee Respectful
- Bee Helpful
- Bee Curious



Contact Info:

Ms. Birkett

birkeke@hayfield.k12.mn.us

Room 108

Class Info:

*Physical science 8 is a year long course that covers aspects of general science, physics, and chemistry!

Class Routine

1. Read the board with the day's agenda.
2. Check to make sure you have all "Needed Supplies"
3. Turn in assignments if needed.
4. Start working on warm up if there is a question of the day.

Bell Rings: What Now?

1. Sit at your seat and start working on the warmup
2. Ask questions, write notes & stay organized

Grading

- 60% Daily Assignments, Labs, Quizzes and Homework
- 40% Major Assignments, Labs, and Projects



classroom guidelines

- *Phones in Cell Hotel
- *No locker passes
- *Please use restroom/water fountain before class begins!



Subject Schedule

Subjects covered in your 8th Grade Science Class
(order may change)

1st Quarter - Semester 1

- Nature of Science
- Intro to Physical Science
- Force and Motion



To Remember:

Ask questions. Scientists are curious..

3rd Quarter - Semester 2

- Sound, Light, Mirrors, Lenses
- Matter
- Atoms and the Periodic Table

To Remember:

You will be required to provide a notebook, and this notebook will stay in the class unless otherwise discussed.

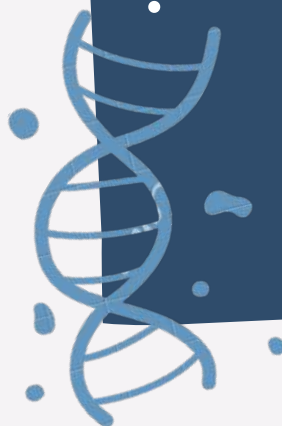
2nd Quarter - Semester 1

- Energy, Work, Simple Machines
- Electricity and Magnetism
- Waves/Electromagnetism



4th Quarter - Semester 2

- Chemical Bonds and Equations
- Solutions, Acids and Bases
- Thermal Energy



Procedures: Personal Items

- **In my classroom you MAY have :
- *A water bottle, and required class materials.

- In my classroom you MAY NOT have :.
- *A backpack, mini backpack, or sack of any kind.
- *Food in the lab areas

Procedures: Group Work

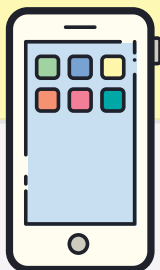


Science requires group work. Either in a lab, a project or class challenge. Be prepared to participate to the best of your ability.

Procedures: Retaking Assessments

- *Students may retake any summative assignment.
- Please see student handbook for complete policies.

CELL PHONES NEED TO BE PLACED INTO THE CELL HOTEL AT THE BEGINNING OF CLASS (Unless we are using them for class).



Procedures: Absence



You are responsible for assignments and content that we cover when you are gone!

Procedures: Tardies

- *BE ON TIME TO CLASS! Putting your books down, leaving and coming in after the bell counts as an unexcused tardy.

Procedures: Late Work

- *LATE ASSIGNMENTS ARE PERMITTED UNTIL 5 DAYS AFTER THE SUMMATIVE ASSIGNMENT OF THE UNIT.

Procedures: Passes

