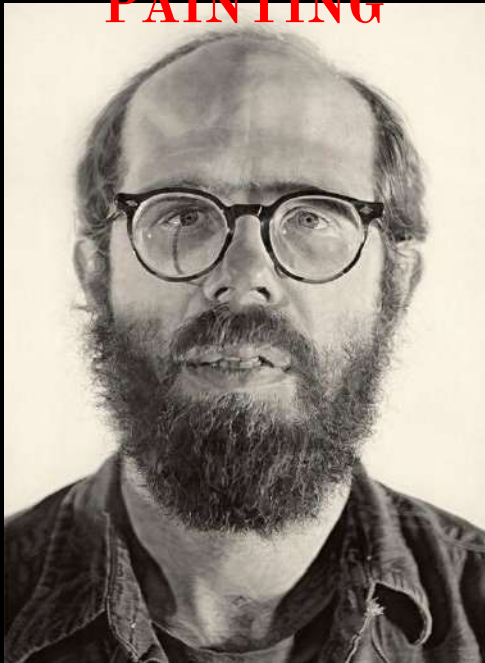


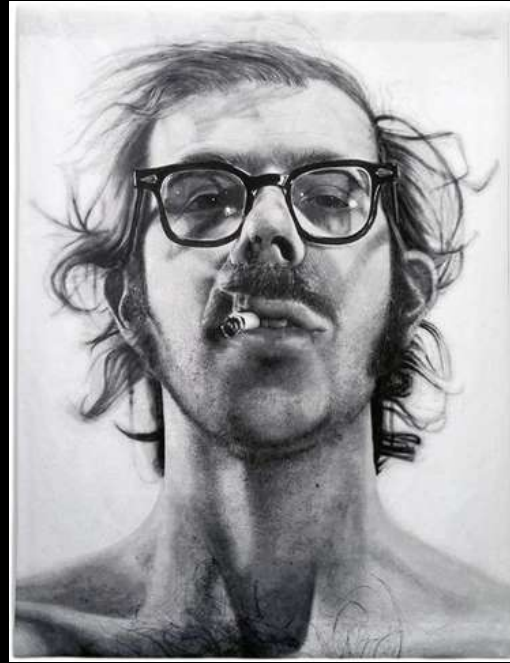
Photorealism

THIS is a Chuck Close Style **THIS is a**

PAINTING



Photorealism is a genre of **PAINTING** art that encompasses painting, drawing and other graphic media, in which an artist studies a photograph and then attempts to reproduce the image as realistically as possible in another medium.



Photorealism

The movement came about the same time period as Pop Art.

Photorealism expressed a strong interest in realism in art by moving away from styles of art like idealism and abstraction.

The name Photorealism was coined in reference to those artists whose work from photographs.

They often projected onto canvas allowing images to be replicated with precision and accuracy.

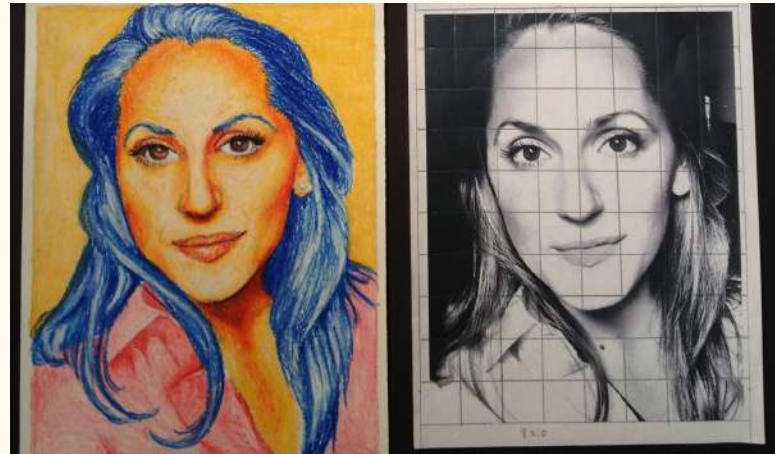
The exactness was often aided further by the use of an airbrush, which was originally designed to retouch photographs.

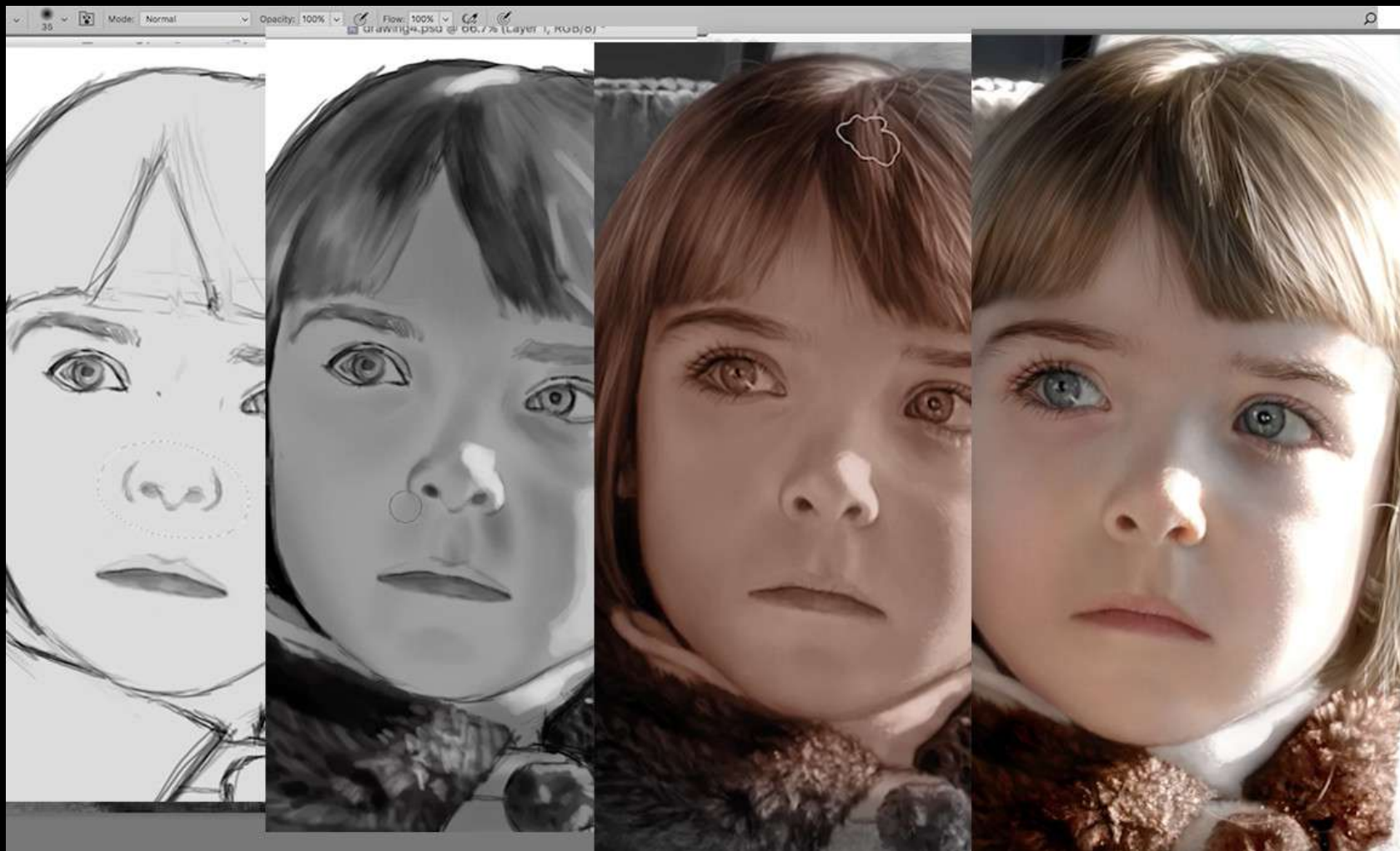
Photorealism is an American art movement.

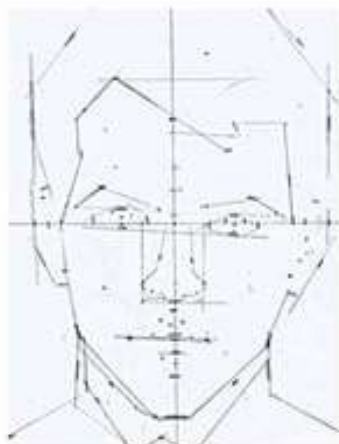
Artists attempt to recreate an image using a photograph.

They would use different artistic medium such as pencil, color pencils, pastels, painting, charcoal, etc.

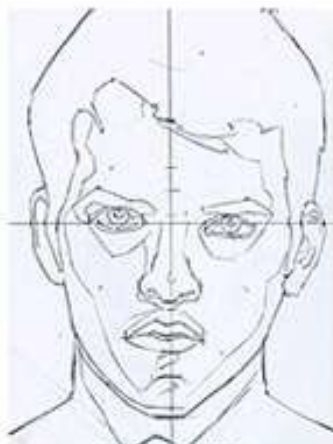
The primary goal of a photorealist was to capture the essence of the photograph on canvas.







initial sketch



general drawing



detailed drawing



mid-tone wash



block-in



rendering #1

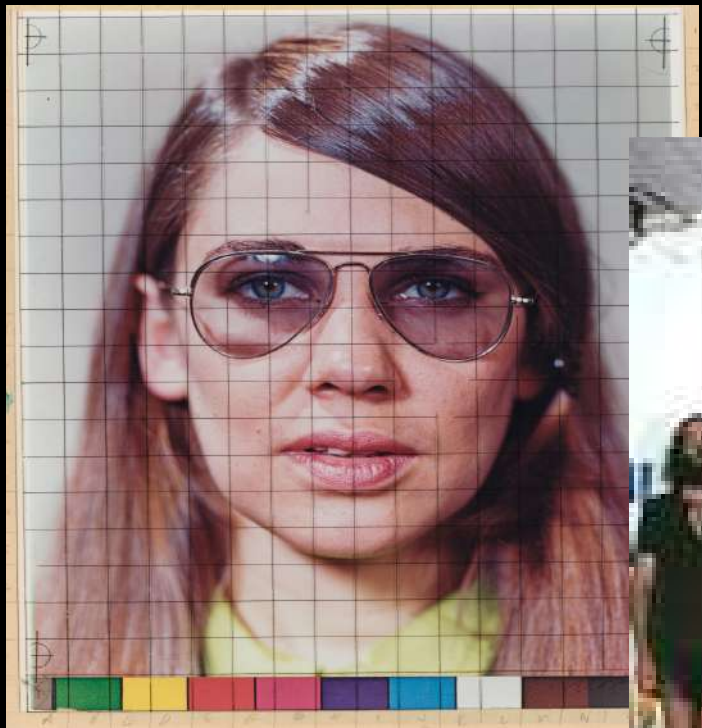


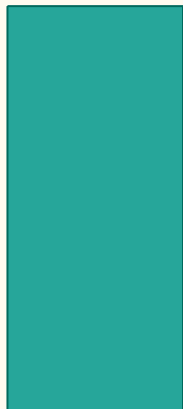
rendering #2



glazing & details



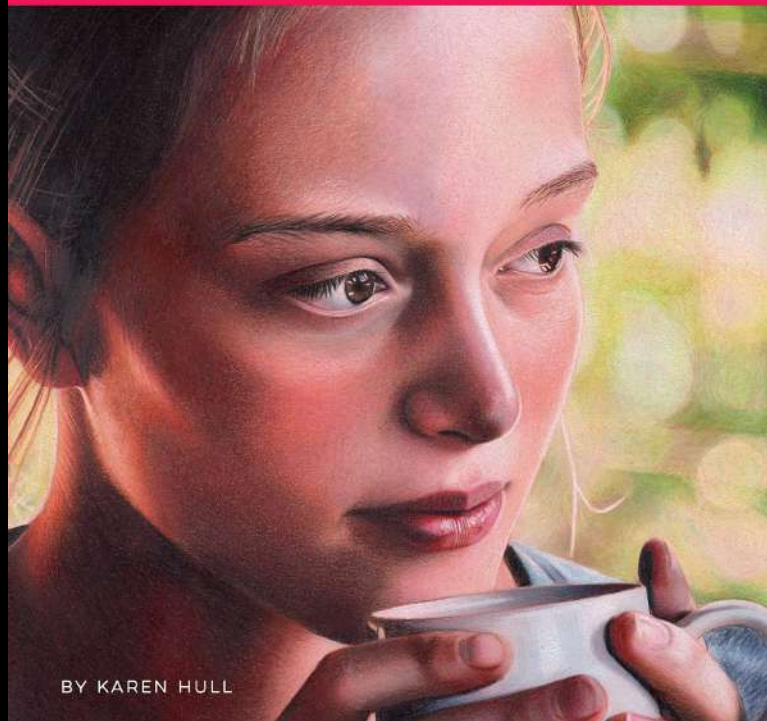


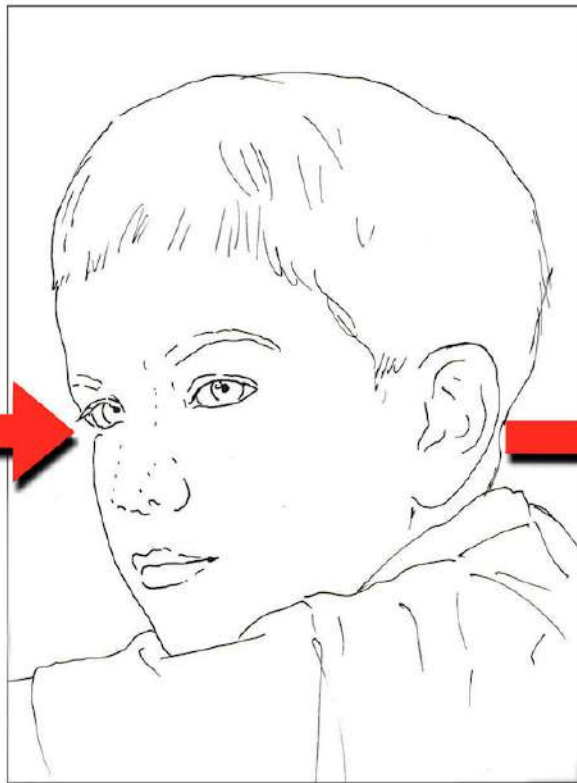




REALISTIC PORTRAITS IN
COLORED
PENCIL

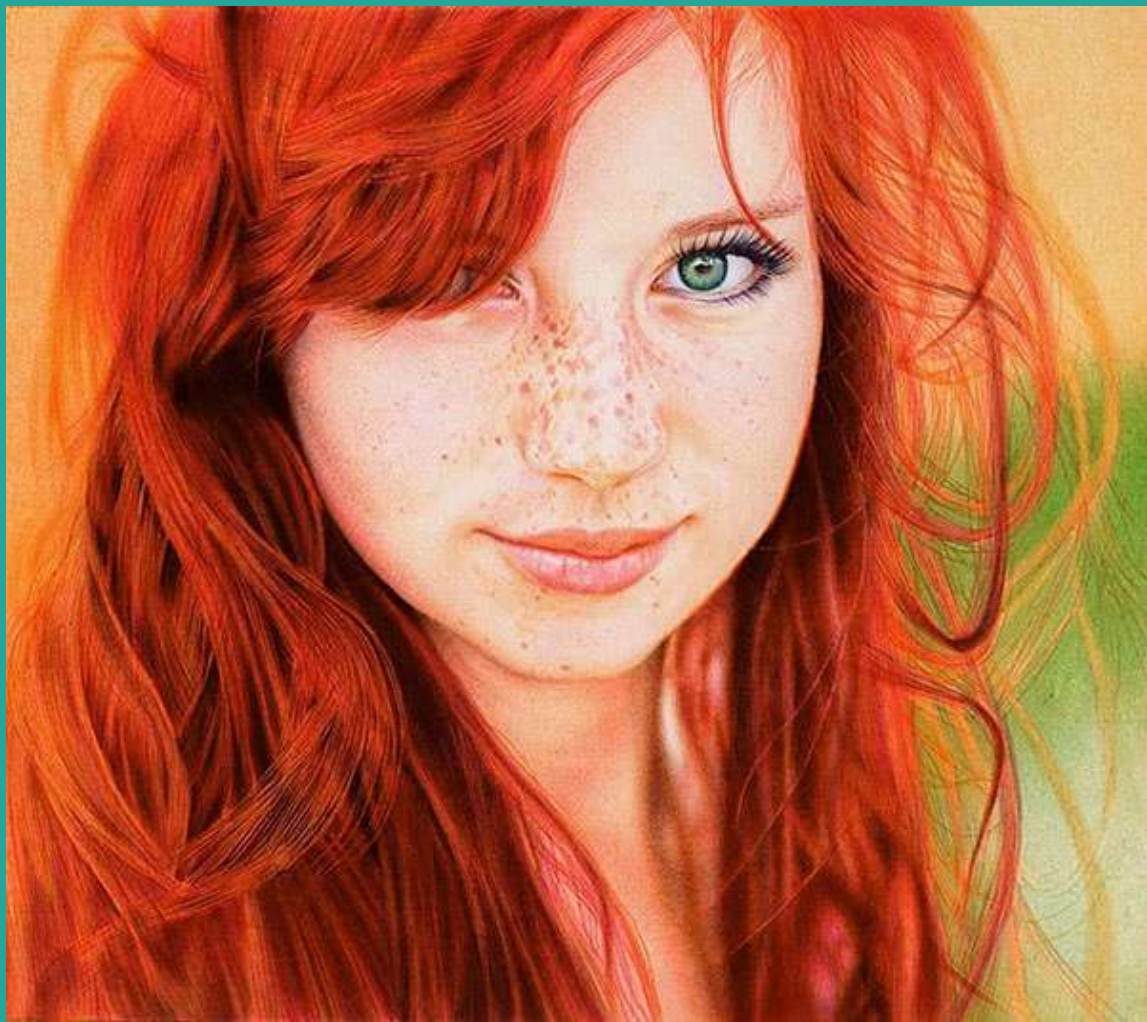
Learn to draw **LIFELIKE PORTRAITS** in vibrant colored pencil

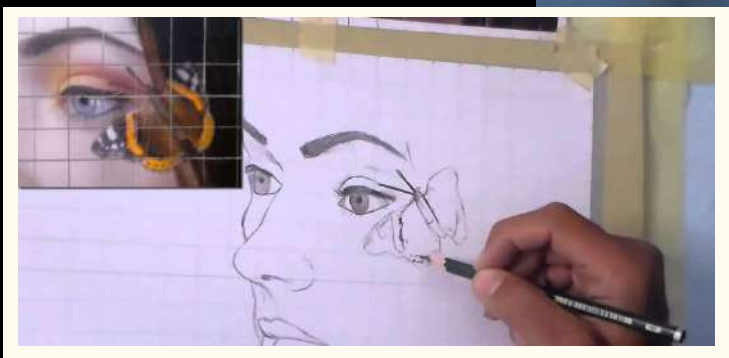
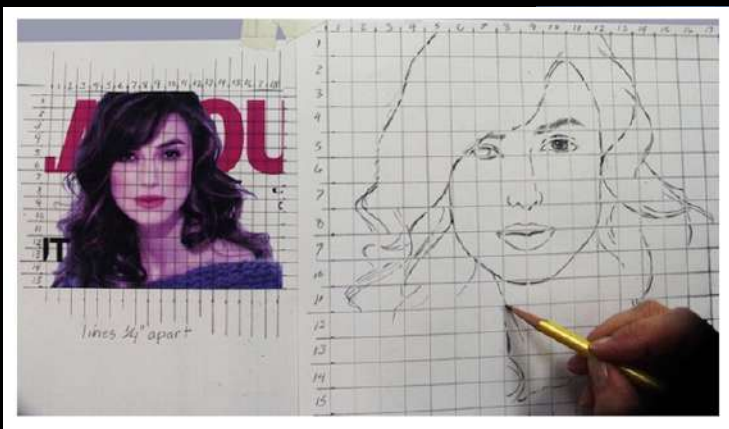




Portraits in Color Pencil
with Mark Menendez

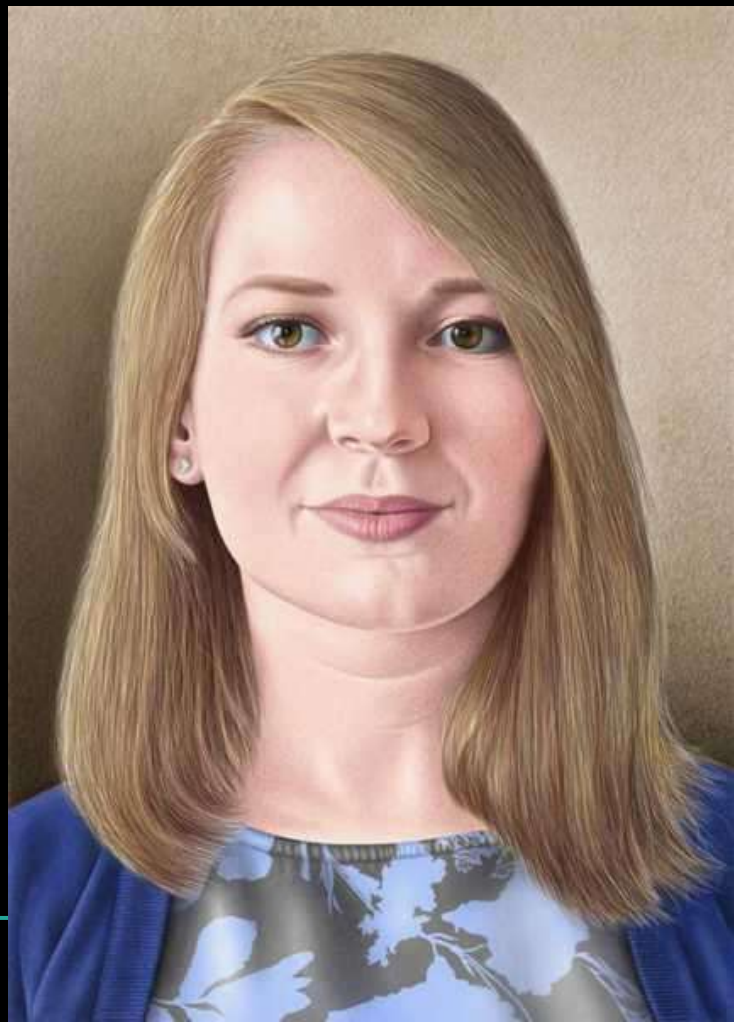
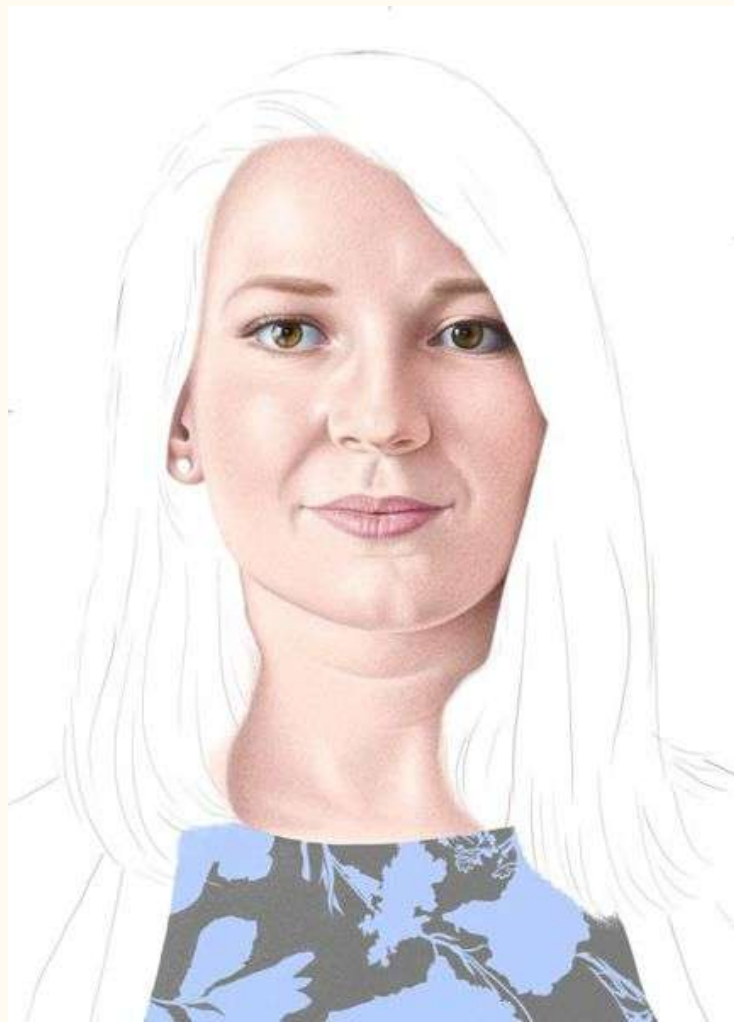


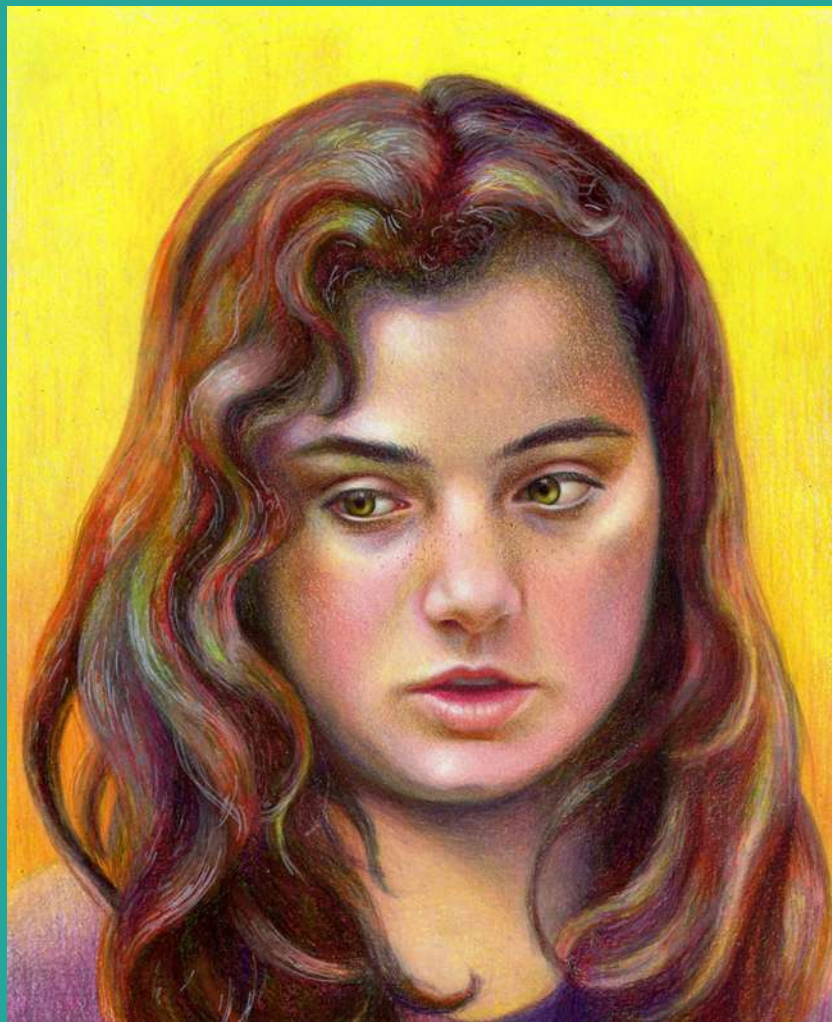




Lachri.com

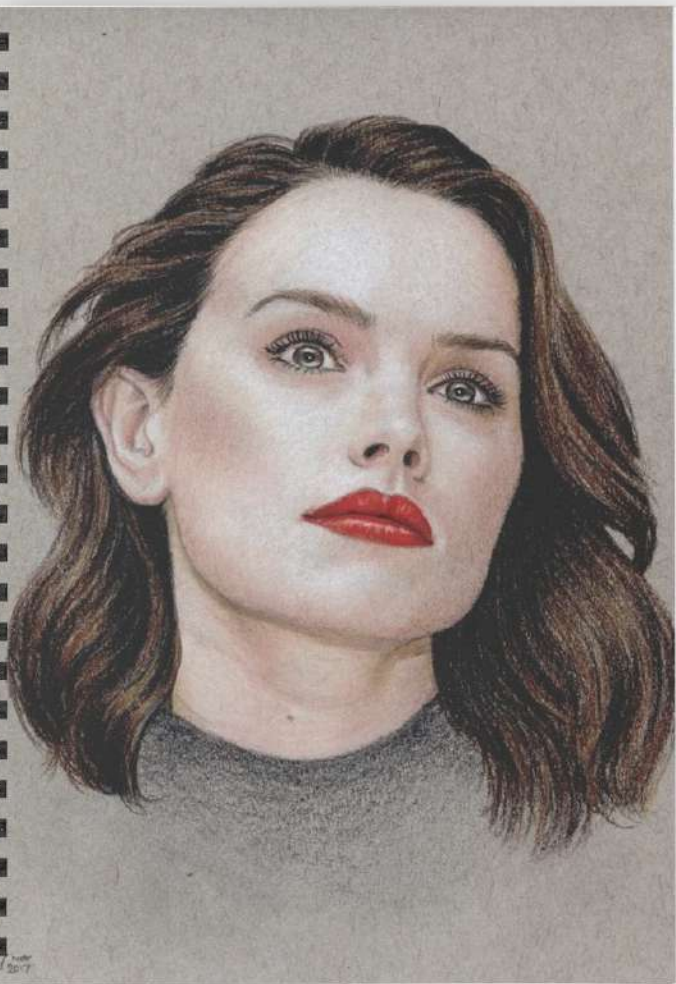












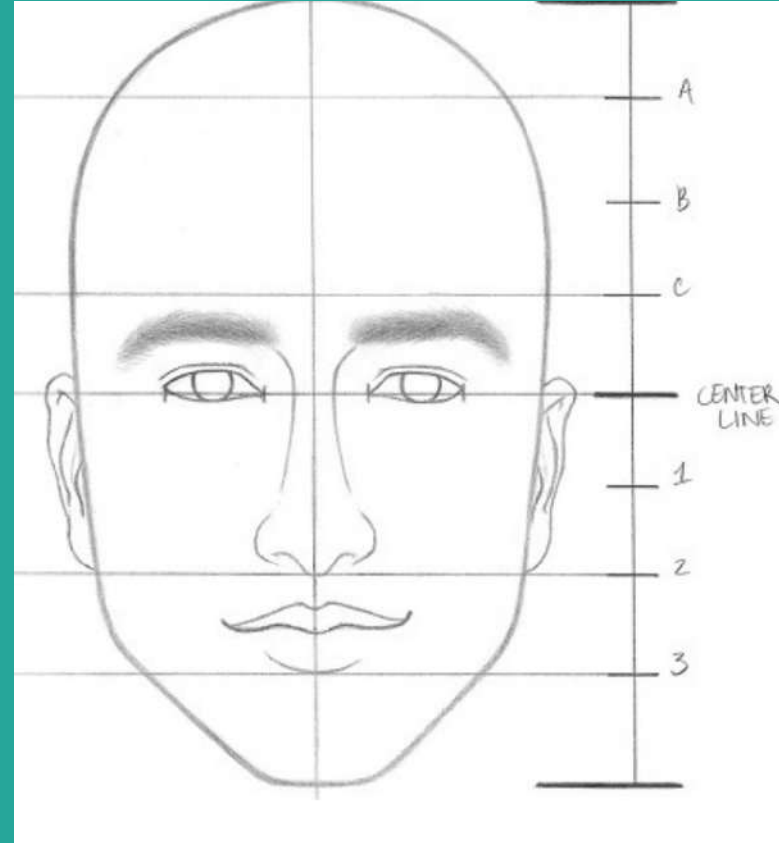
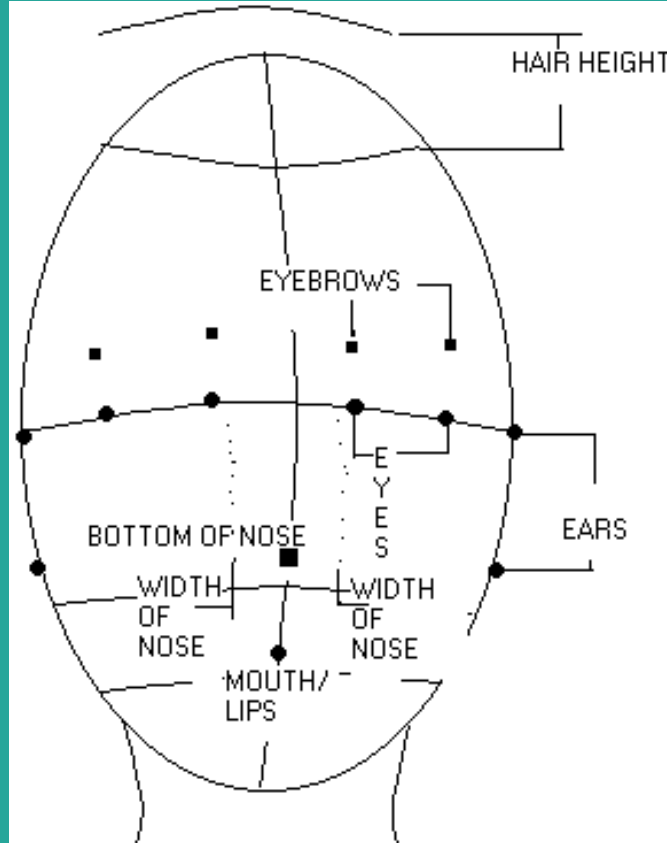
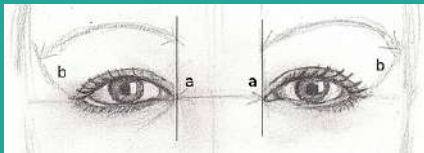
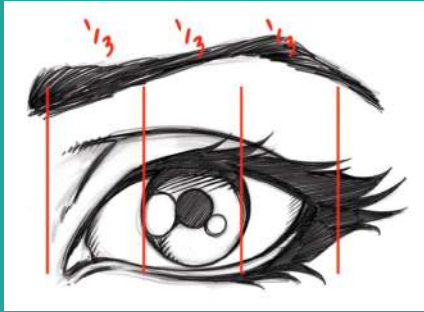
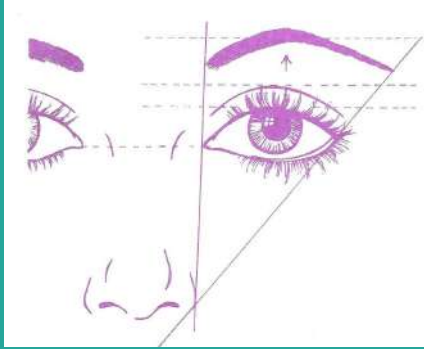
Billy
2016







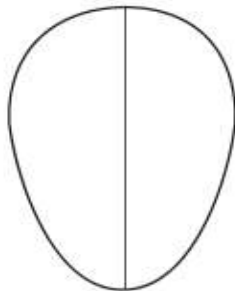
PORTRAIT PROPORTIONS



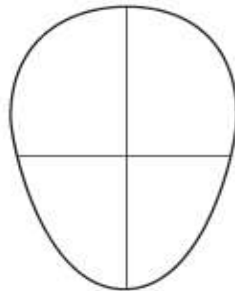
Proportions of the Face



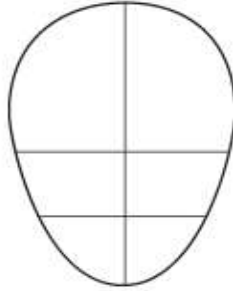
To begin drawing a portrait you will first need to draw an egg shape. Remember that the narrow part of the egg points down as this will become the chin.



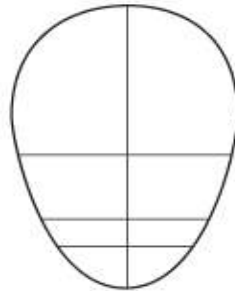
Draw a line vertically right through the centre of the egg. This line will make sure that you line up the nose, mouth and eyes correctly.



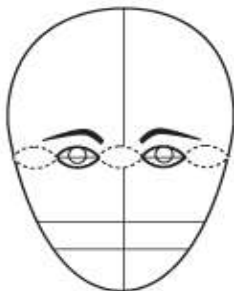
Draw a horizontal line half way down the egg. This is where the eyes and top of the ears will go.



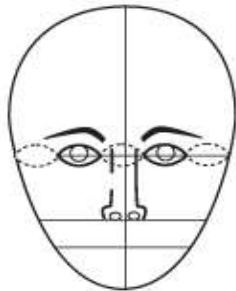
Half way between the eye line and the chin draw a second horizontal line. This is where the bottom of the nose and ears will go.



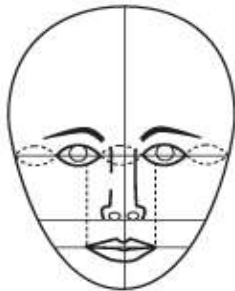
A third of the way down from the nose line draw a third horizontal line. This is where the mouth will go.



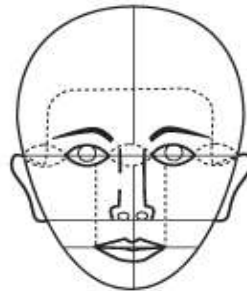
Draw in the eyes with the corners on the line. To ensure the eyes are the correct size you should be able to fit five equal eye widths across the head.



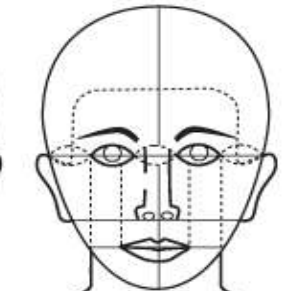
Draw the bottom of the nose. The nostrils should nest on the line.



Draw in the mouth with the line dividing the two lips. By measuring a third in from the inside corner of the eye and drawing a line vertically on each side, you can achieve an accurate mouth width.



Draw in the ears and the hairline. The hairline can help determine the shape of the face. Remember the ears should fit snugly between the eye and nose lines.



Draw the neck by drawing a vertical line from the outer corner of the eye on each side to achieve the correct width.

Assignment: Photorealism Self-Portrait- Chuck Close

- 1. You will be creating a self-portrait based on the work of Chuck Close using number 2 pencil; Drawing should show influences from Photorealism.**
- 2. Find a black and white photograph of yourself, or you may use a mirror. The picture should be a front or $\frac{3}{4}$ view of your head and shoulders**
- 3. You will lightly draw a contour line photorealism self-portrait drawing using a number two pencil; Head to shoulders required.**
- 4. Study the proportions of the face; you may use a grid or freehand system for drawing proportions)**

Assignment: Photorealism Self-Portrait- Chuck Close

- 5. Practice sketching out the correct proportions on scratch paper before starting your portrait.**
- 6. Practice using pencil to show depth and value on the practice portrait. Be sure to blend values showing the highlights and shadow areas.**
- 7. Use white paper to sketch out your final portrait. Be accurate with proportions and details.**
- 8. Begin using the pencil to show the wide range of values in the face. Accurately use pencil to show the highlights, shadows, and depth in the face.**
- 9. Be sure to clean up all extraneous marks.**