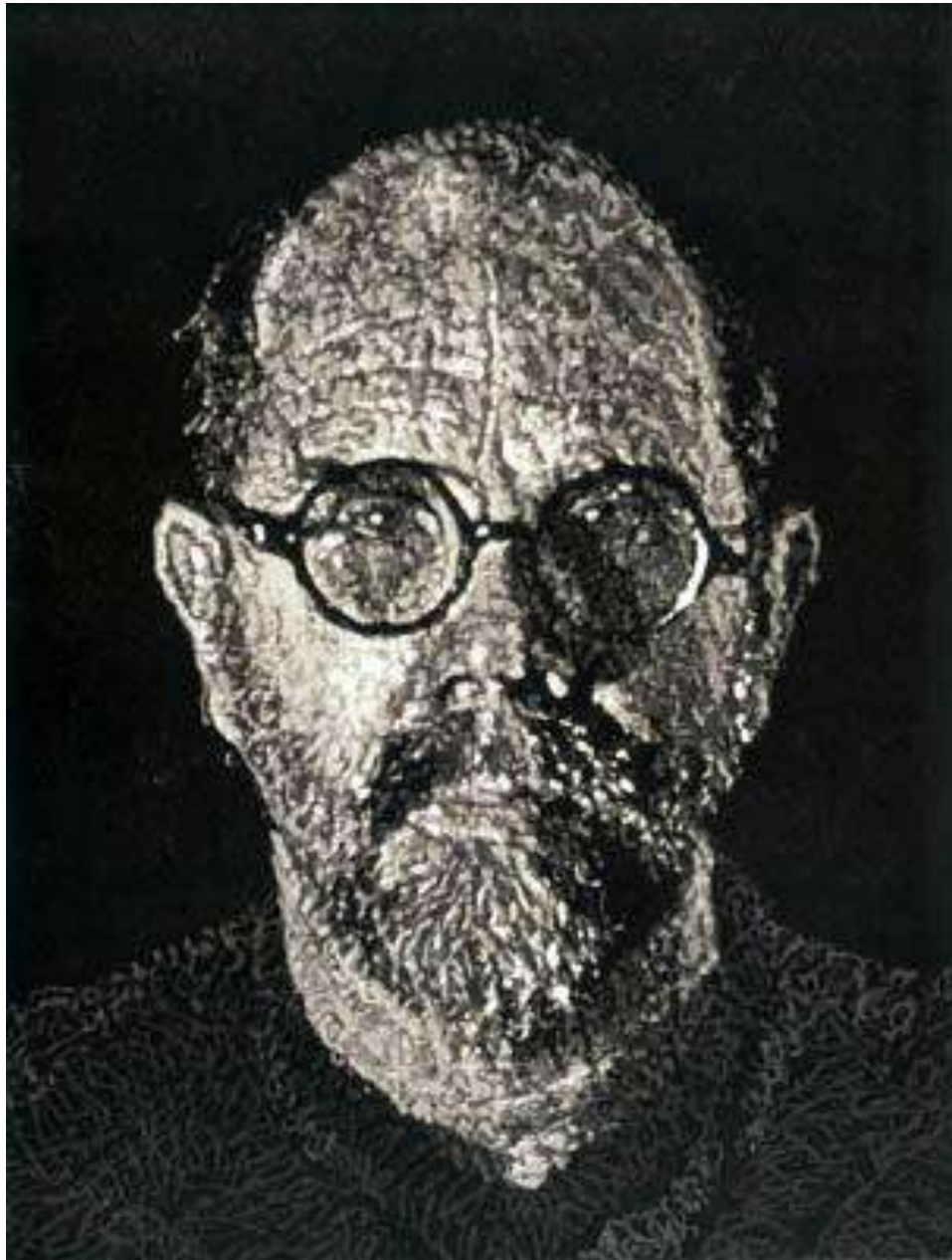


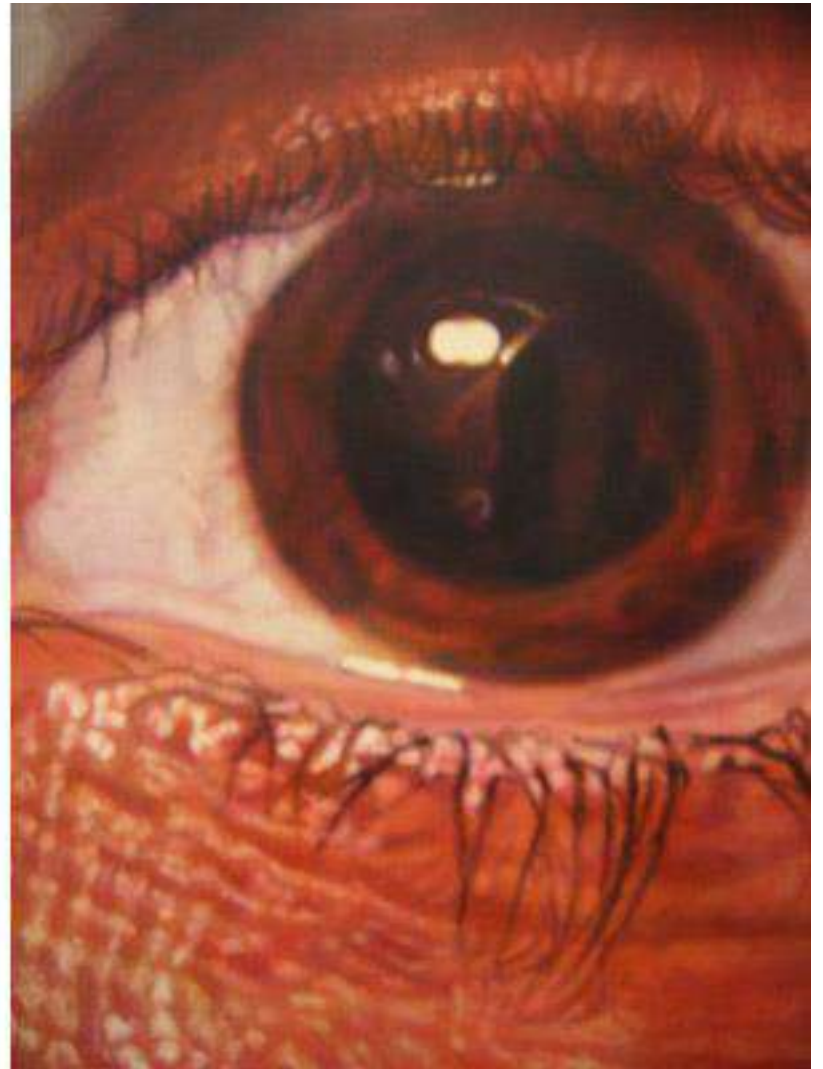
**PHOTOREALISM: is the genre of painting based on making a painting of a photograph.**

**The Photo-Realist uses the camera and photograph to gather information.**

- Chuck Thomas Close is an American painter and photographer who achieved fame as a photorealist, through his massive-scale portraits.
- Though a catastrophic spinal artery collapse in 1988 left him severely paralyzed, he has continued to paint and produce work which remains sought after by museums and collectors.



Self-Portrait II





Close Portraits  
Whitney Museum of American Art  
April 14 - June 21, 1981



Georgia Fingerprint





Chuck Close (American, 1940-), Frank, 1969,

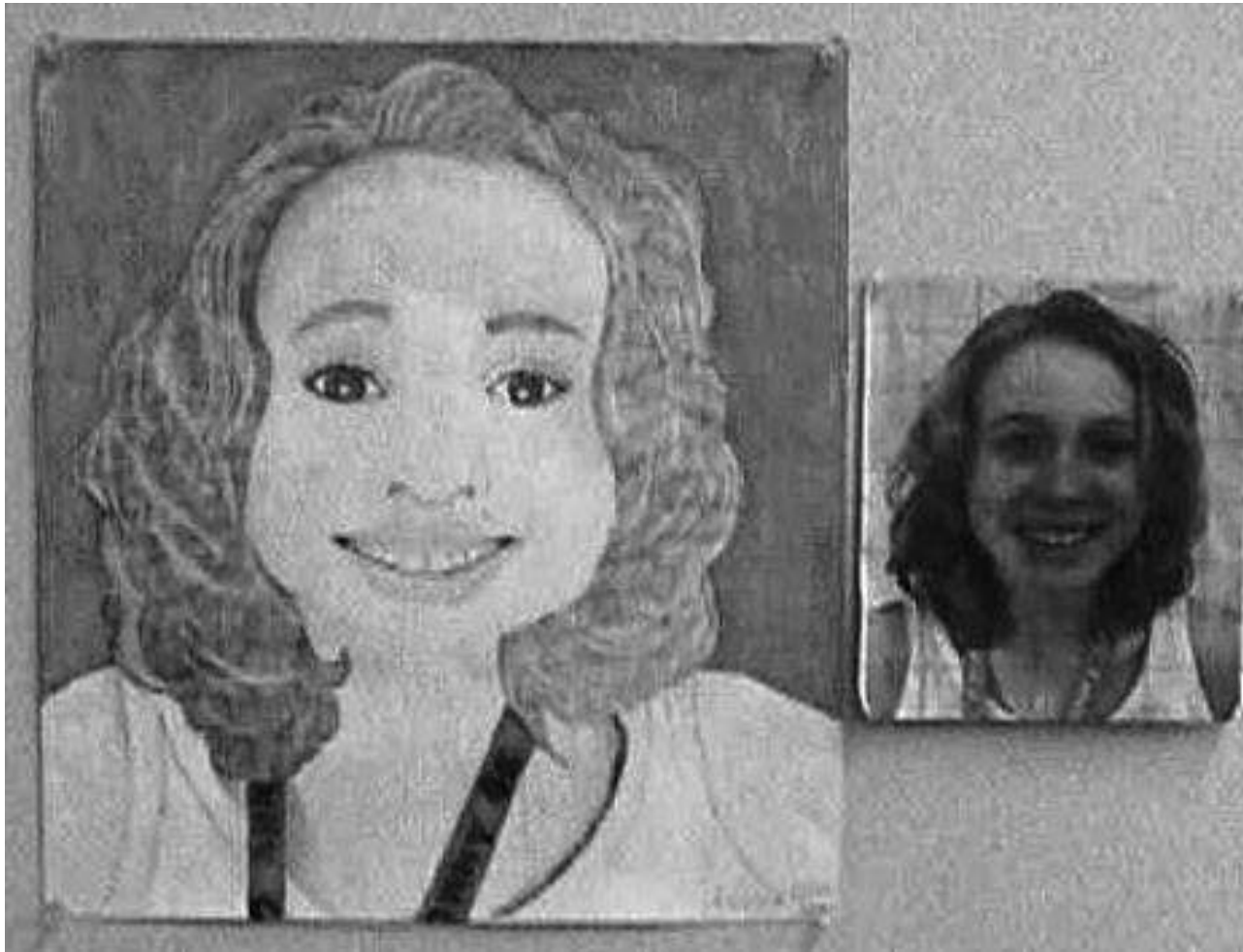
- Photo-realist painting cannot exist without the photograph
- In Photorealism, change and movement must be frozen in time which must then be accurately represented by the artist.
- Photo-realists gather their imagery and information with the camera and photograph.

- Once the photograph is developed (usually onto a photographic slide) the artist will systematically transfer the image from the photographic slide onto paper or canvases.
- This is done by grid techniques.
- The resulting images are often direct copies of the original photograph but are usually larger than the original photograph or slide.

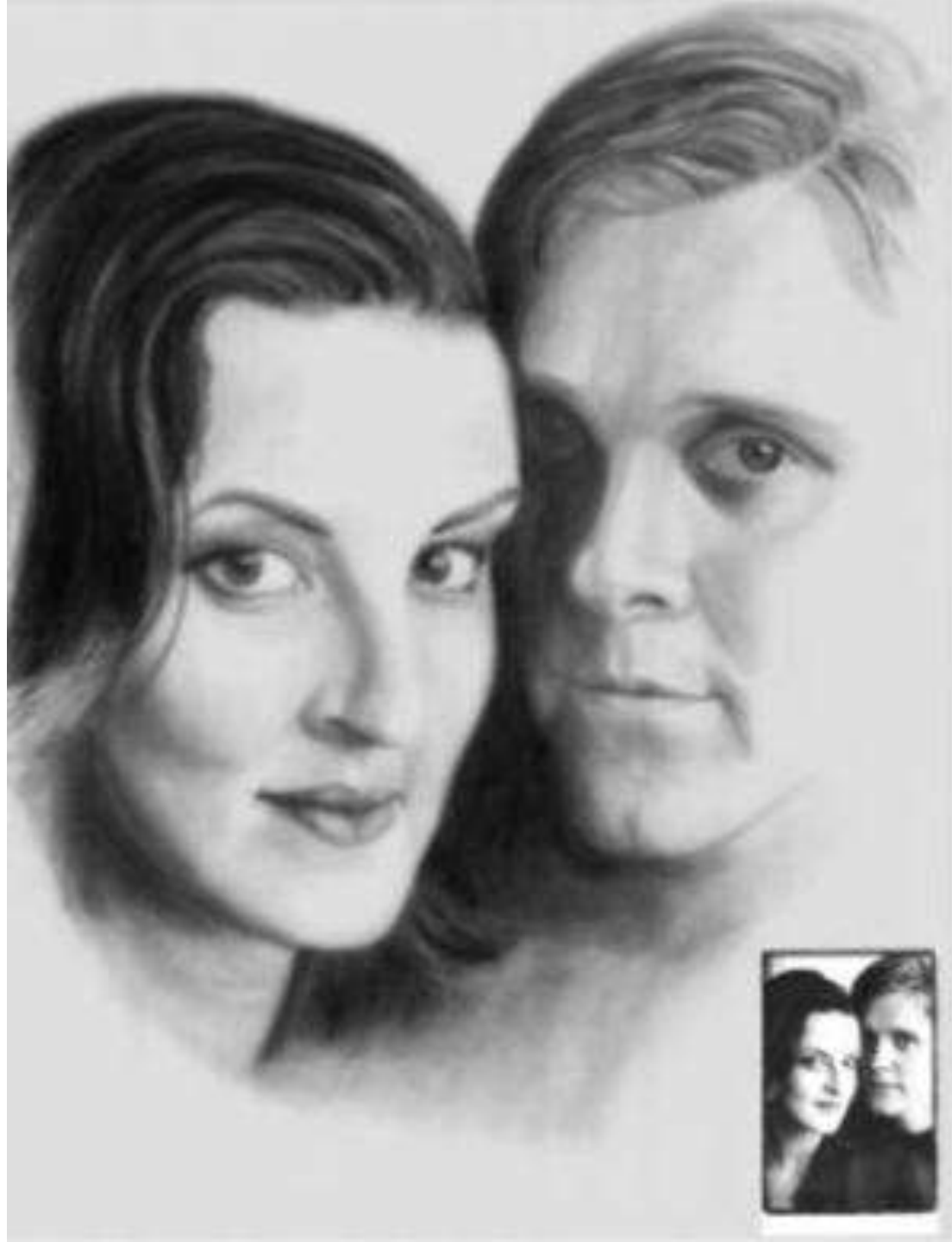




# Student Examples



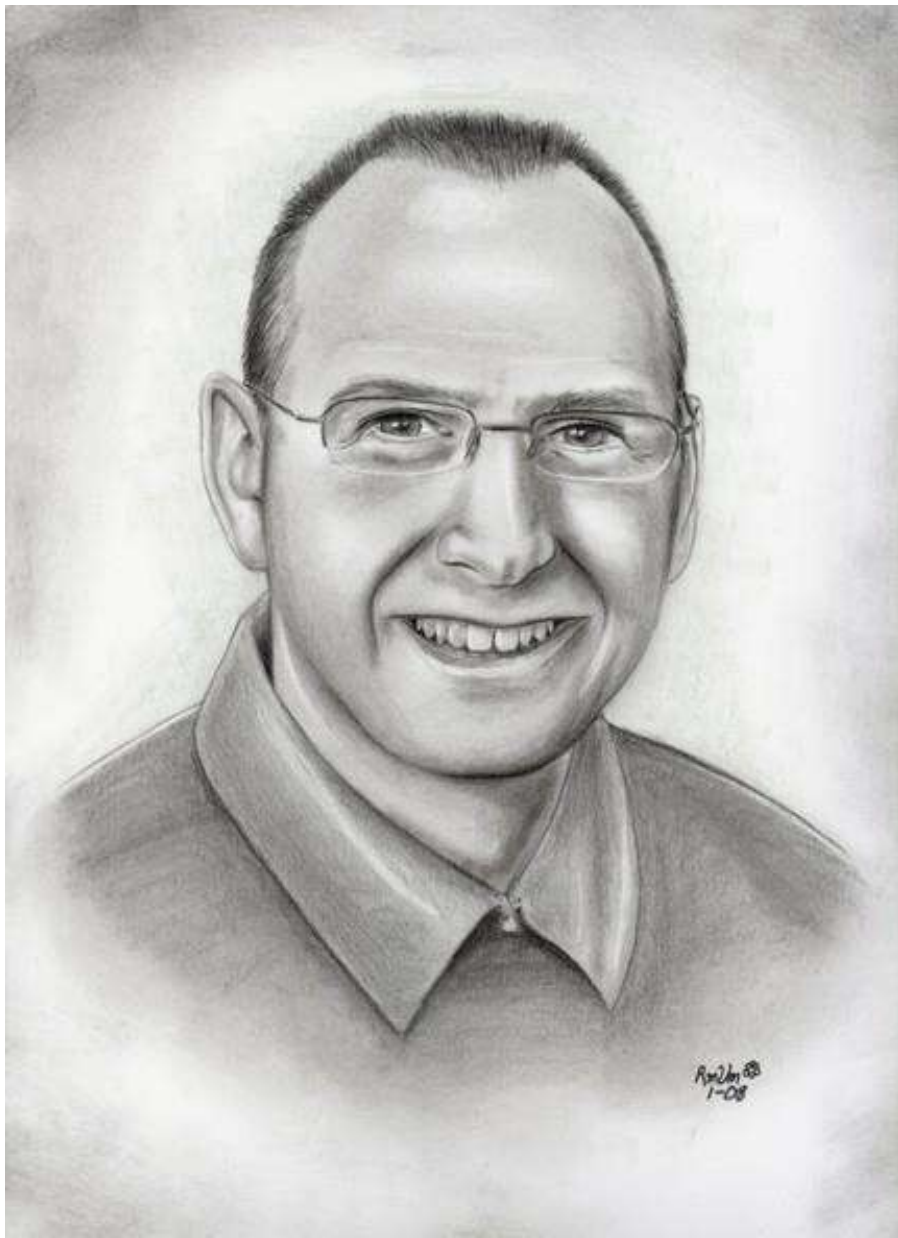




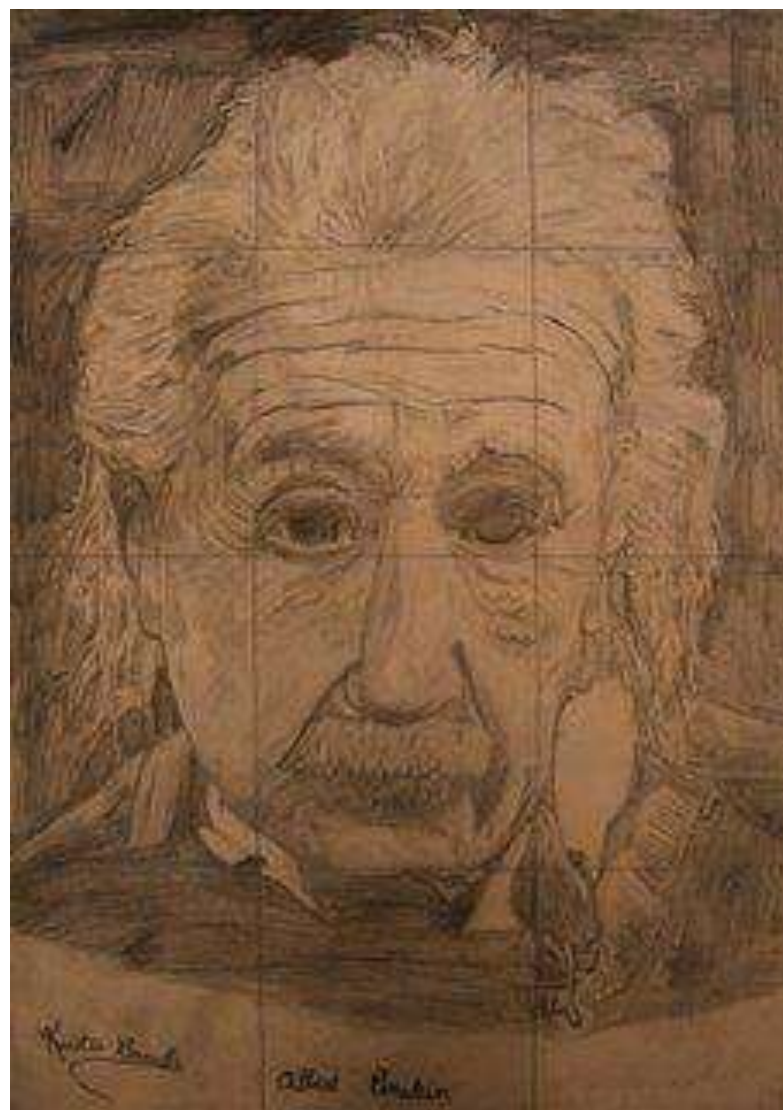












# Examples of Photorealism



