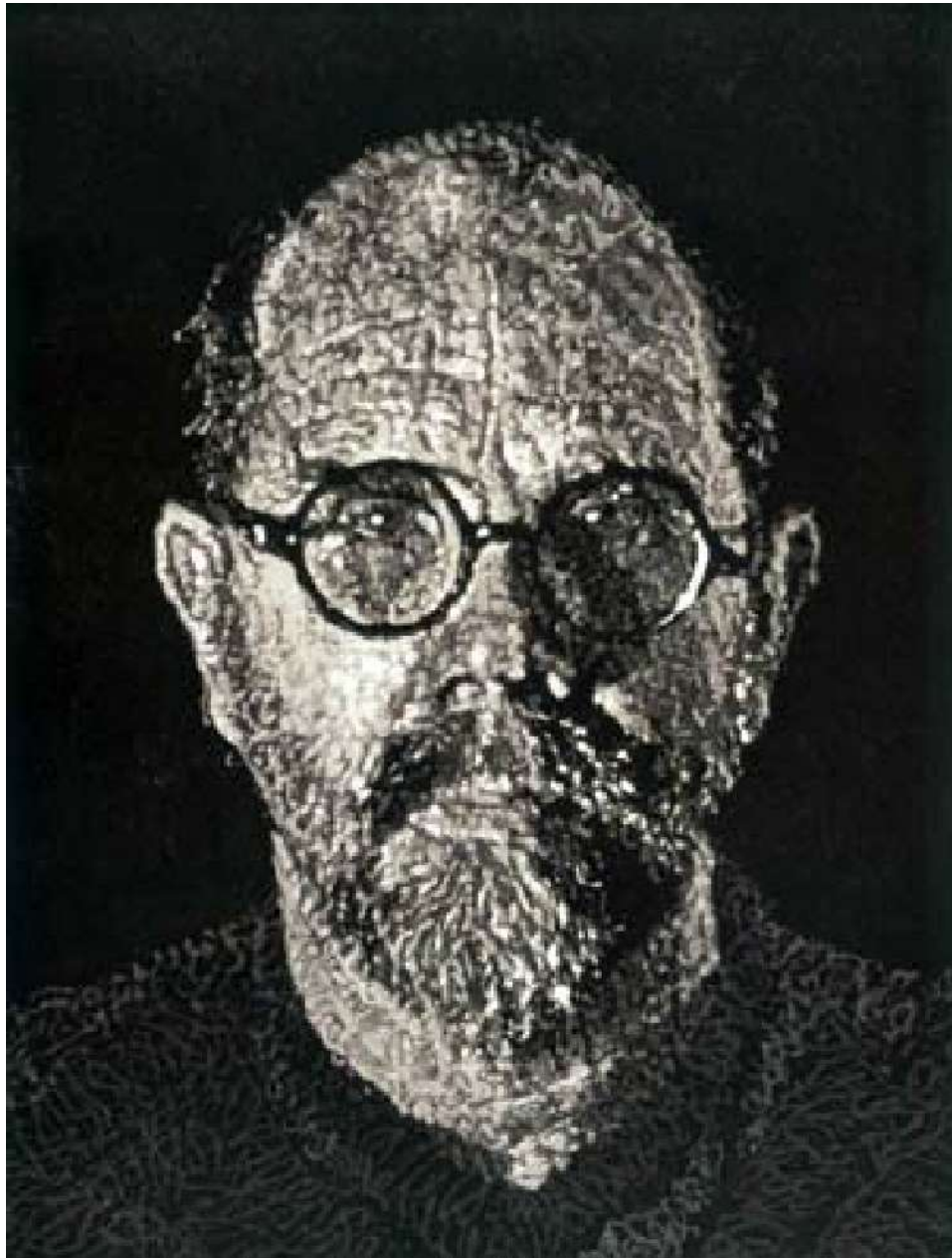


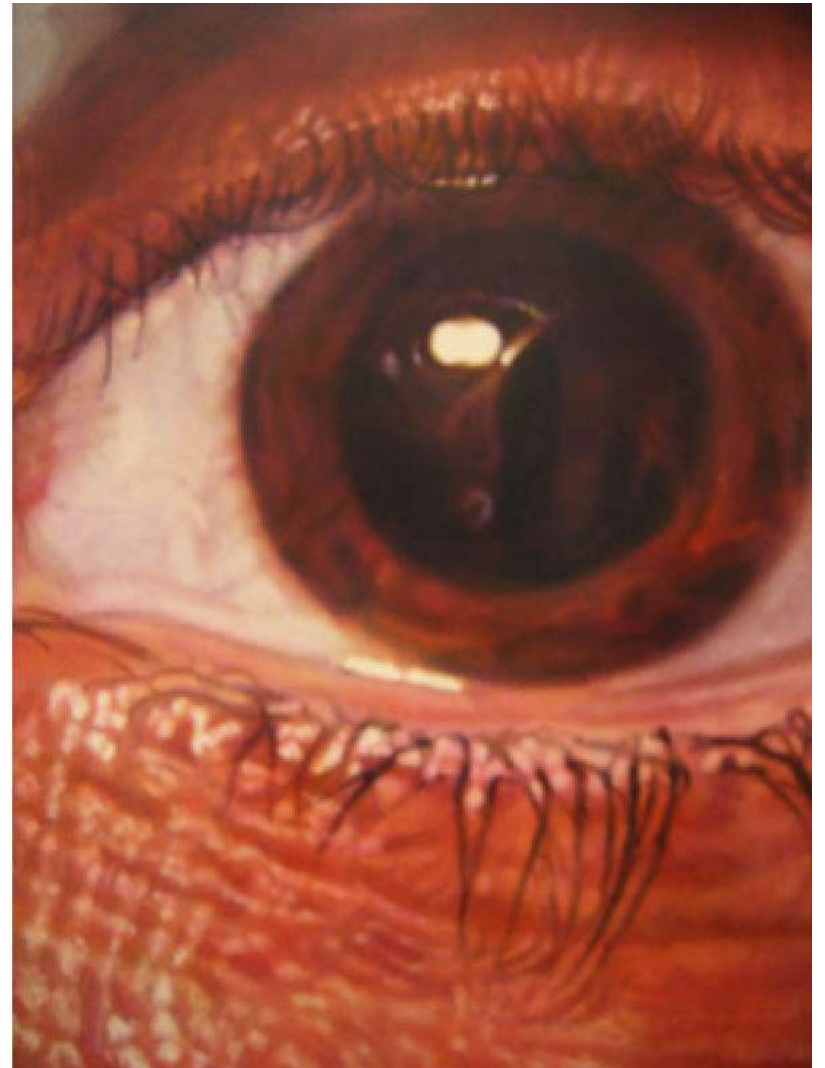
PHOTOREALISM: is the genre of painting based on making a painting of a photograph.

The Photo-Realist uses the camera and photograph to gather information.

- Chuck Thomas Close is an American painter and photographer who achieved fame as a photorealist, through his massive-scale portraits.
- Though a catastrophic spinal artery collapse in 1988 left him severely paralyzed, he has continued to paint and produce work which remains sought after by museums and collectors.



Self-Portrait II





Close Portraits
Whitney Museum of American Art
April 14-June 21, 1981



Georgia Fingerprint



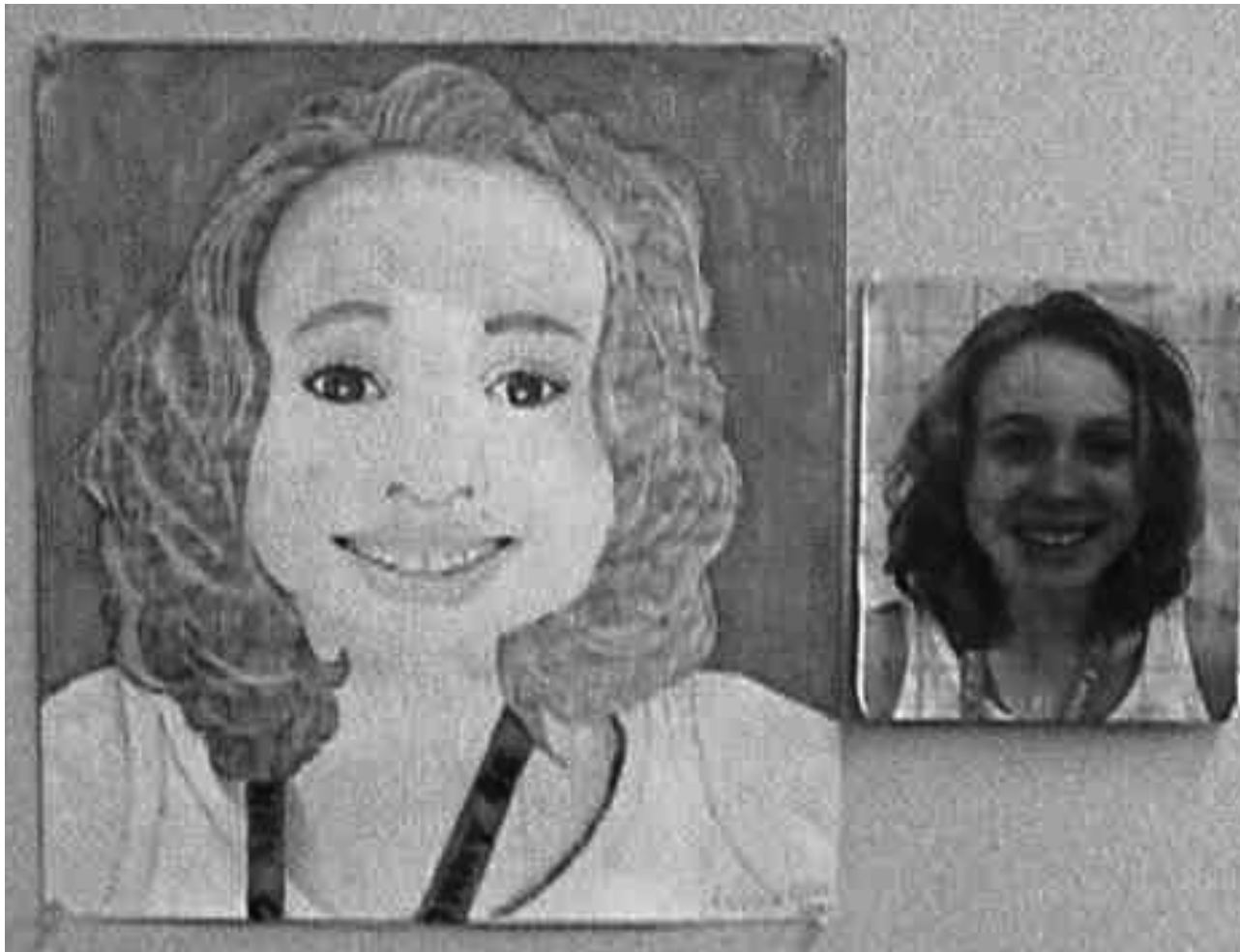
Chuck Close (American, 1940-), Frank, 1969,

- Photo-realist painting cannot exist without the photograph
- In Photorealism, change and movement must be frozen in time which must then be accurately represented by the artist.
- Photo-realists gather their imagery and information with the camera and photograph.

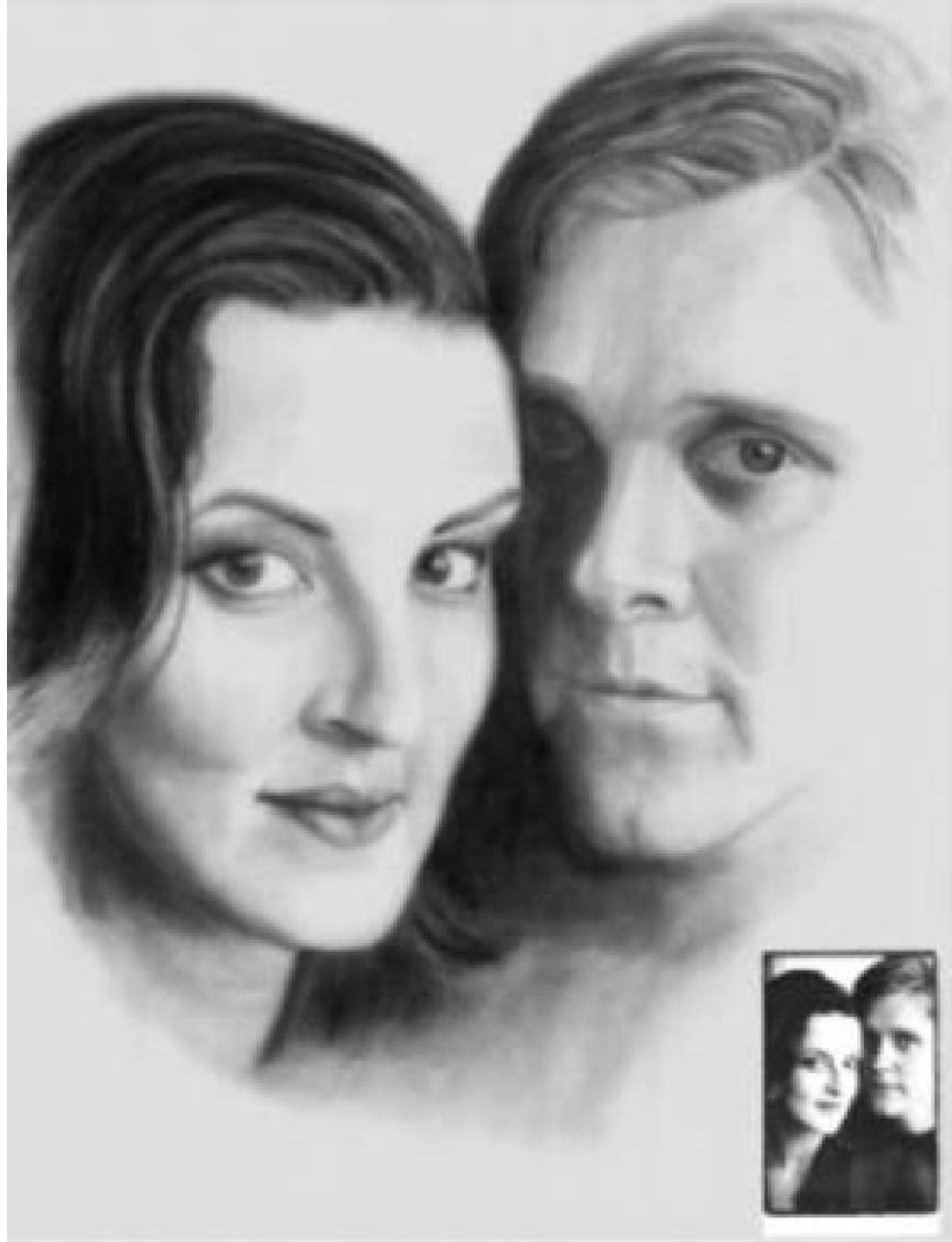
- Once the photograph is developed (usually onto a photographic slide) the artist will systematically transfer the image from the photographic slide onto paper or canvases.
- This is done by grid techniques.
- The resulting images are often direct copies of the original photograph but are usually larger than the original photograph or slide.



Student Examples

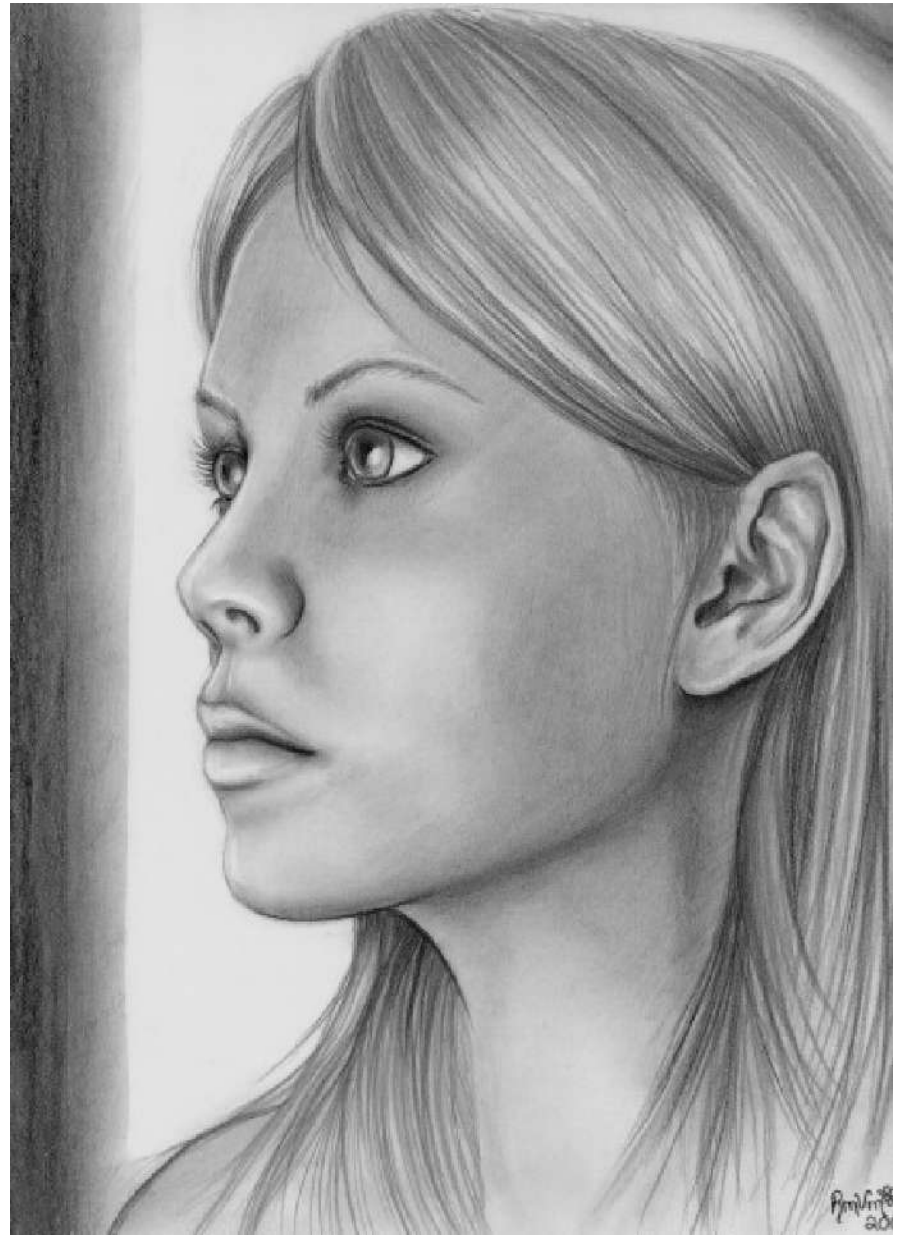


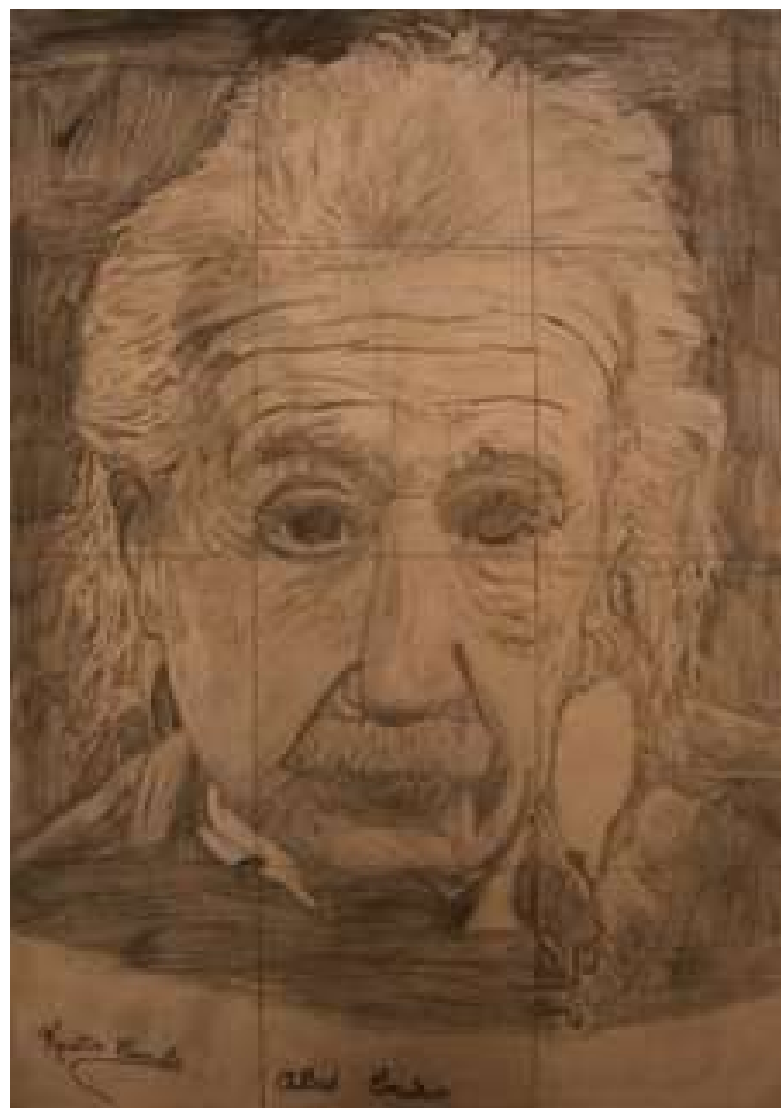






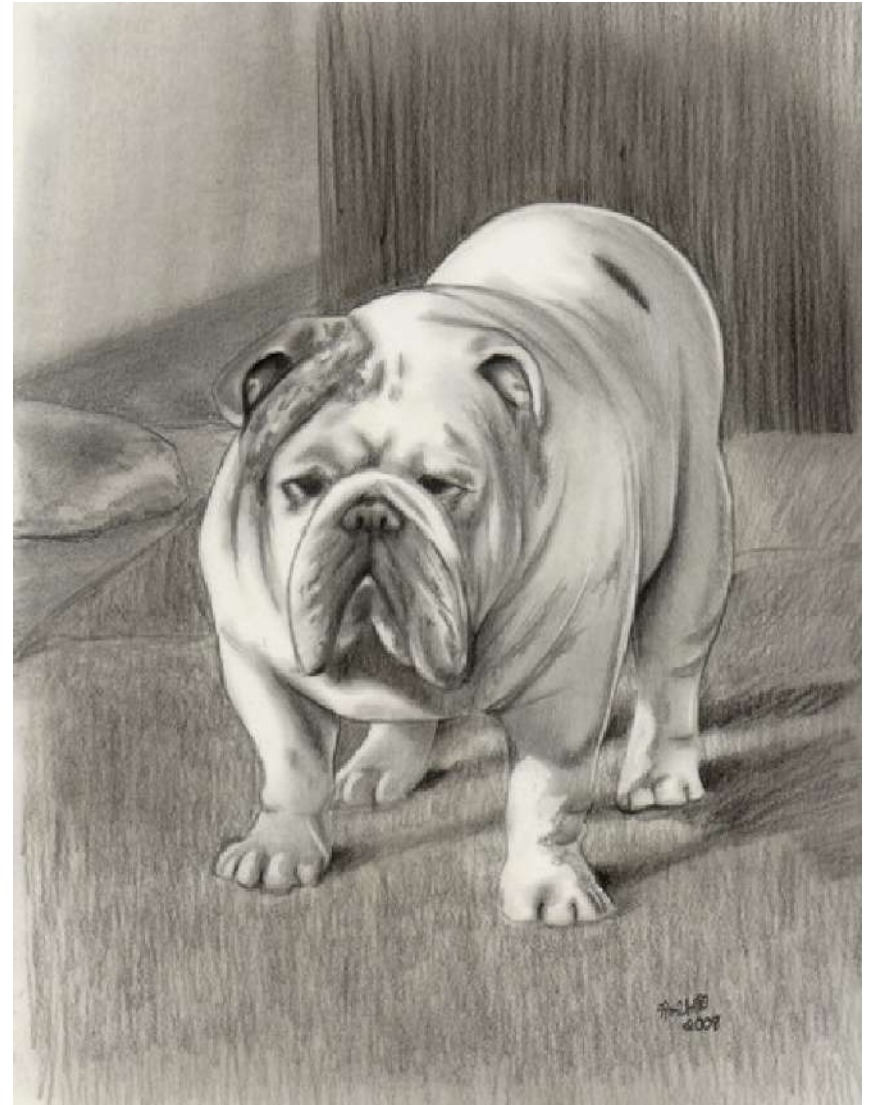


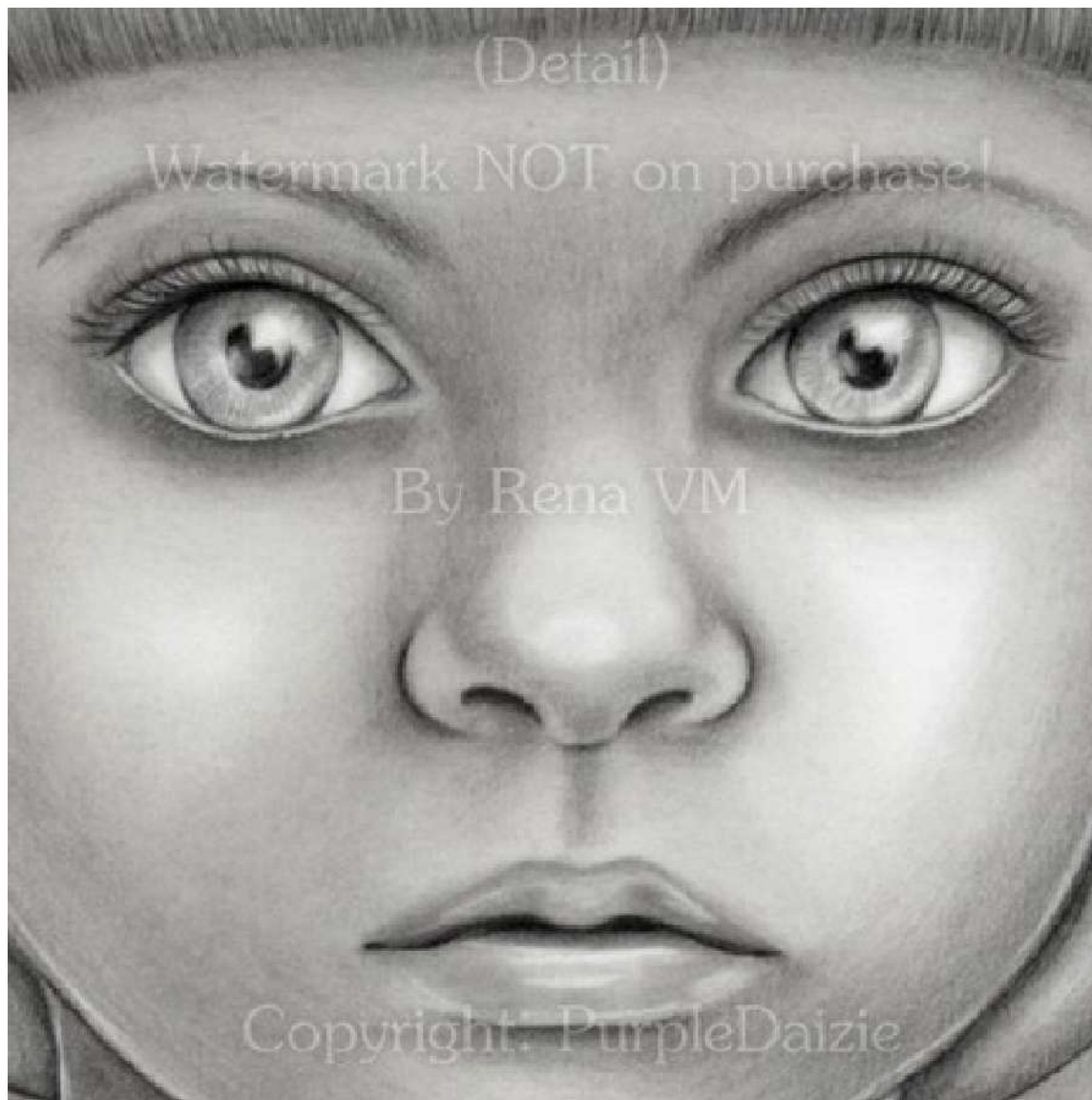




Examples of Photorealism







(Detail)

Watermark NOT on purchase!

By Rena VM

Copyright: PurpleDaizie

